

Some brief non-Io-A.

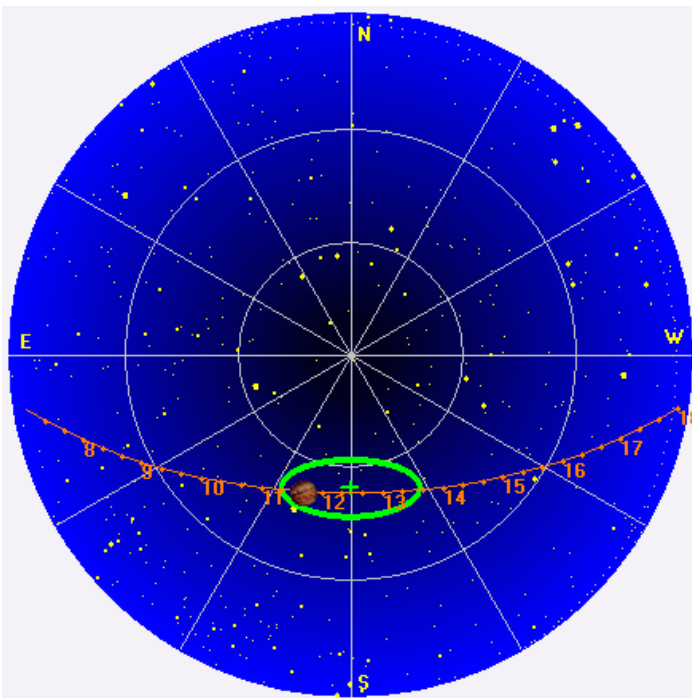
A little earlier than usual, but based on envelope frequency drift direction, this is A source, not B source.

RCP dominant L bursting 1128–1159 UTC from 16 to 20 MHz, negative frequency drift emission envelopes.

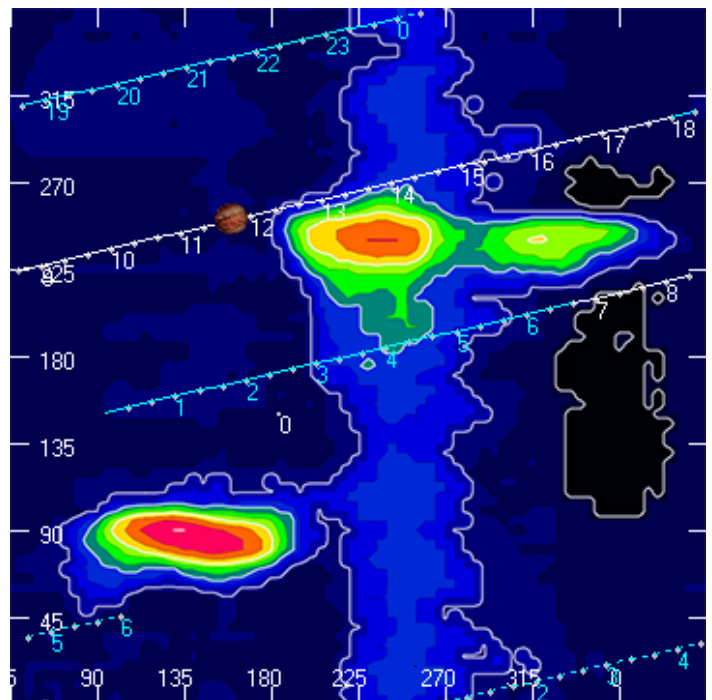
Jupiter was -19° to -14° off axis.

Jupiter was leading the Sun by 74° .

Jupiter's location at midpoint of observed emission (1143 UTC)

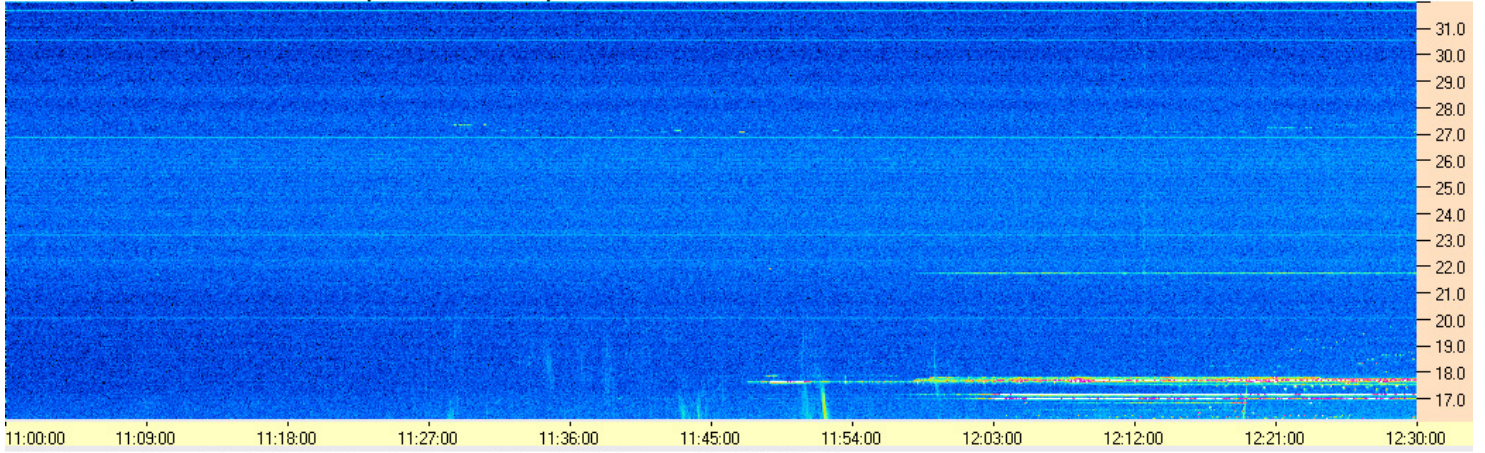


Sky map with array HPBW in green.

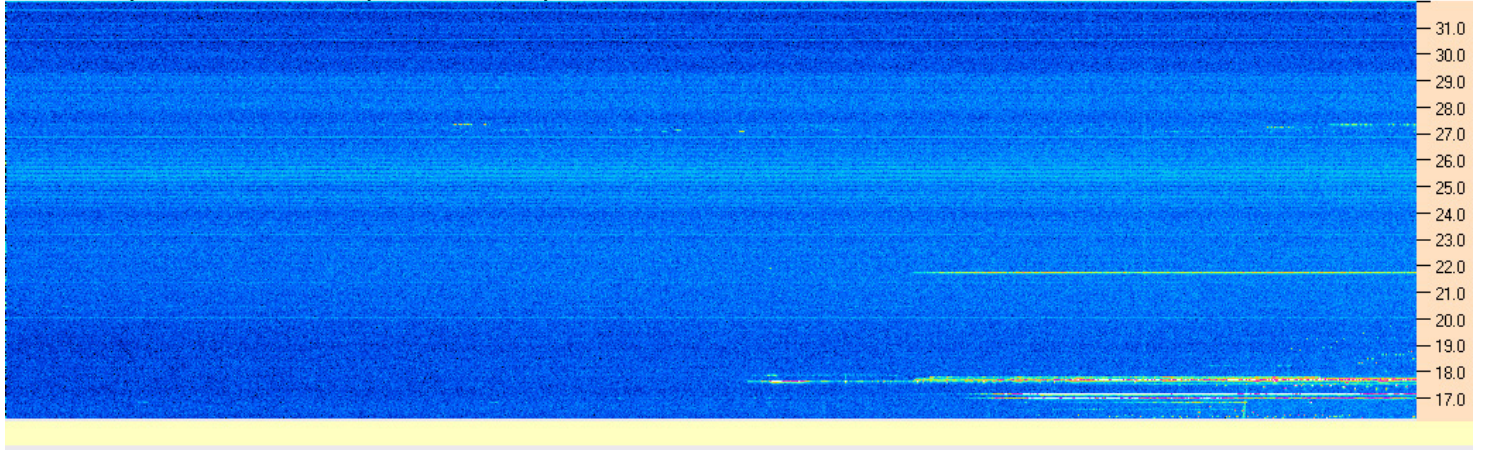


CML-Io phase plane.

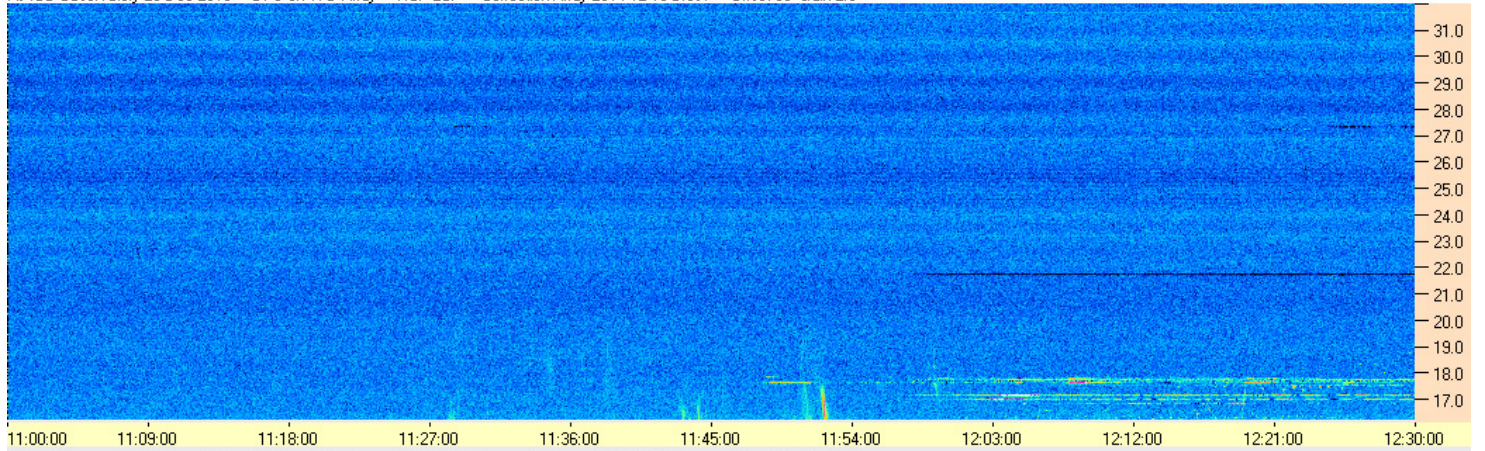
AJ4CO Observatory 25 Dec 2016 - DPS on TFD Array - RCP - Correction Array 2014 12 18 B.csv - Offset 2050 Gain 5.0



AJ4CO Observatory 25 Dec 2016 - DPS on TFD Array - LCP - Correction Array 2014 12 18 B.csv - Offset 2050 Gain 5.0



AJ4CO Observatory 25 Dec 2016 - DPS on TFD Array - RCP-LCP - Correction Array 2014 12 18 B.csv - Offset 50 Gain 2.0



AJ4CO Observatory 25 Dec 2016 - DPS on TFD Array - LCP-RCP - Correction Array 2014 12 18 B.csv - Offset 50 Gain 2.0

