

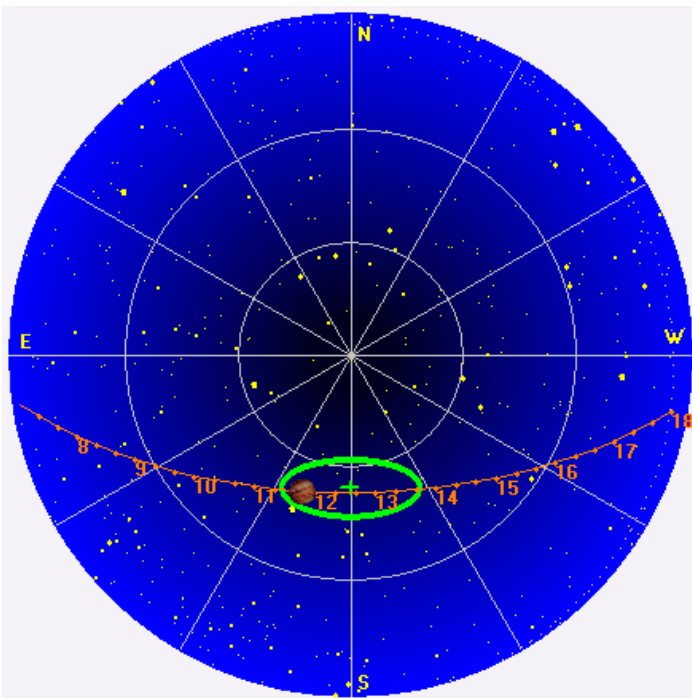
Some lackluster Io-A.

RCP dominant L bursting 1107–1229 UTC from 16 to 30 MHz, negative frequency drift emission envelopes.

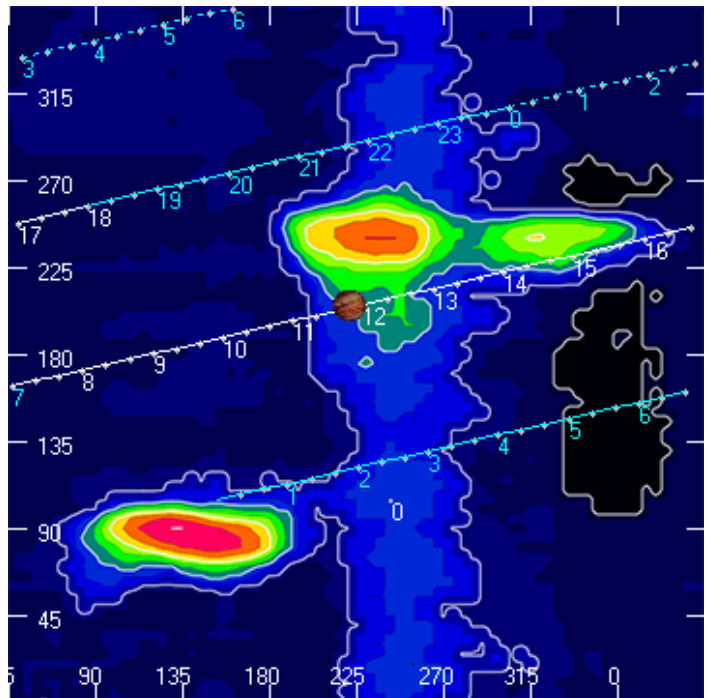
Jupiter was -25° to -12° off axis.

Jupiter was leading the Sun by 72° .

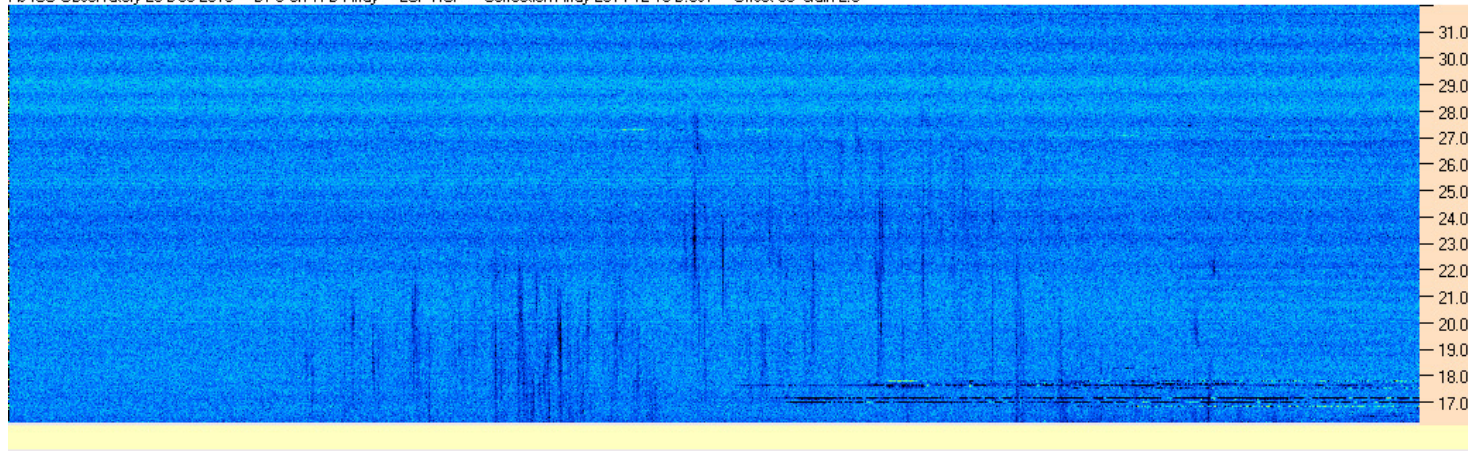
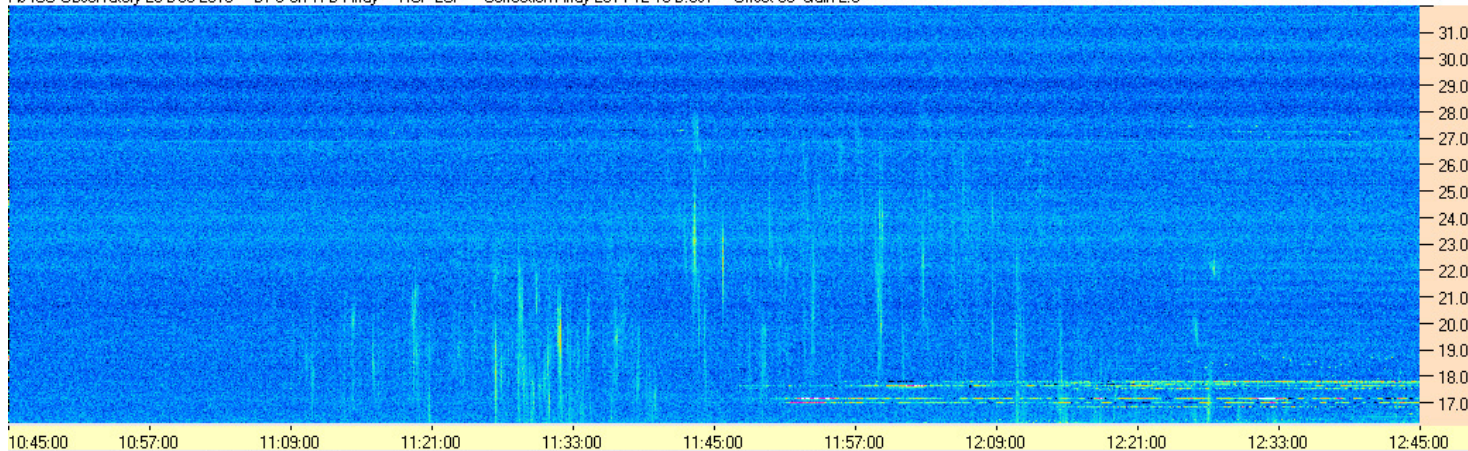
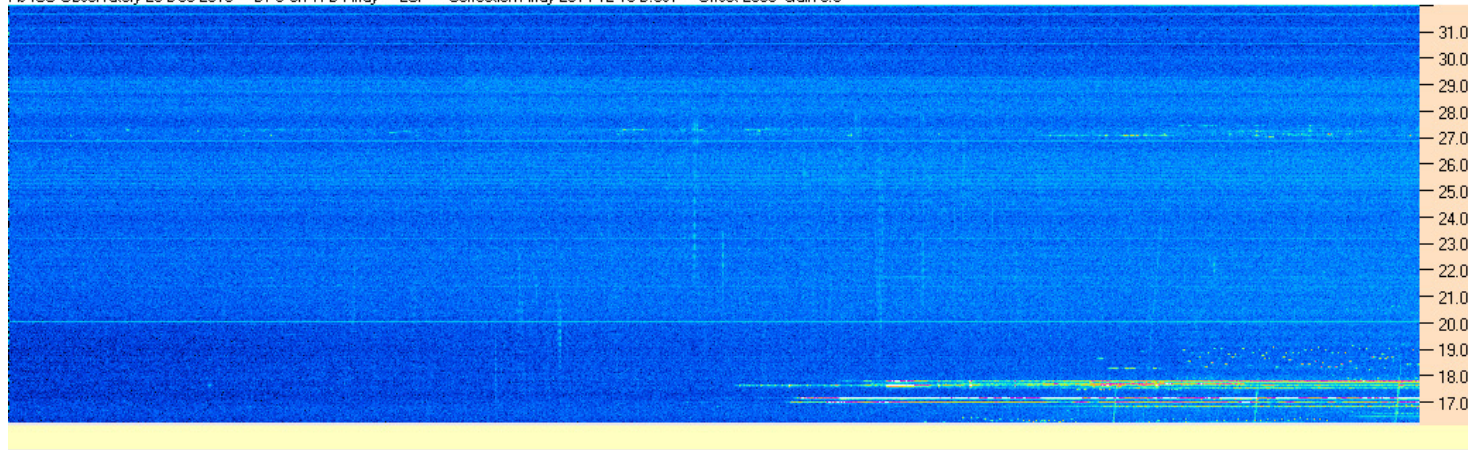
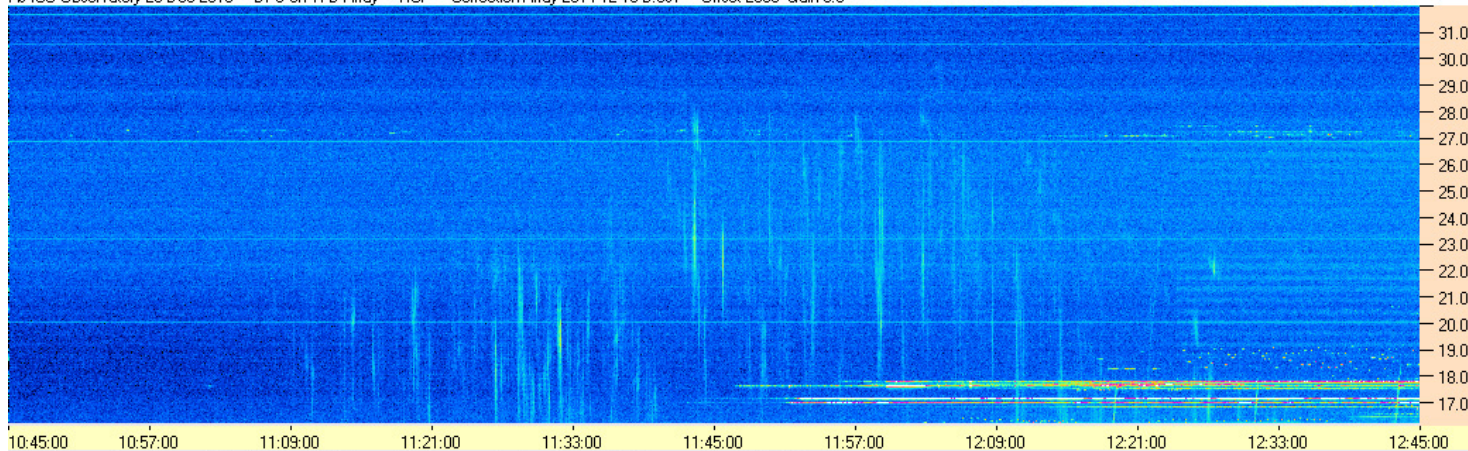
Jupiter's location at midpoint of observed emission (1148 UTC)

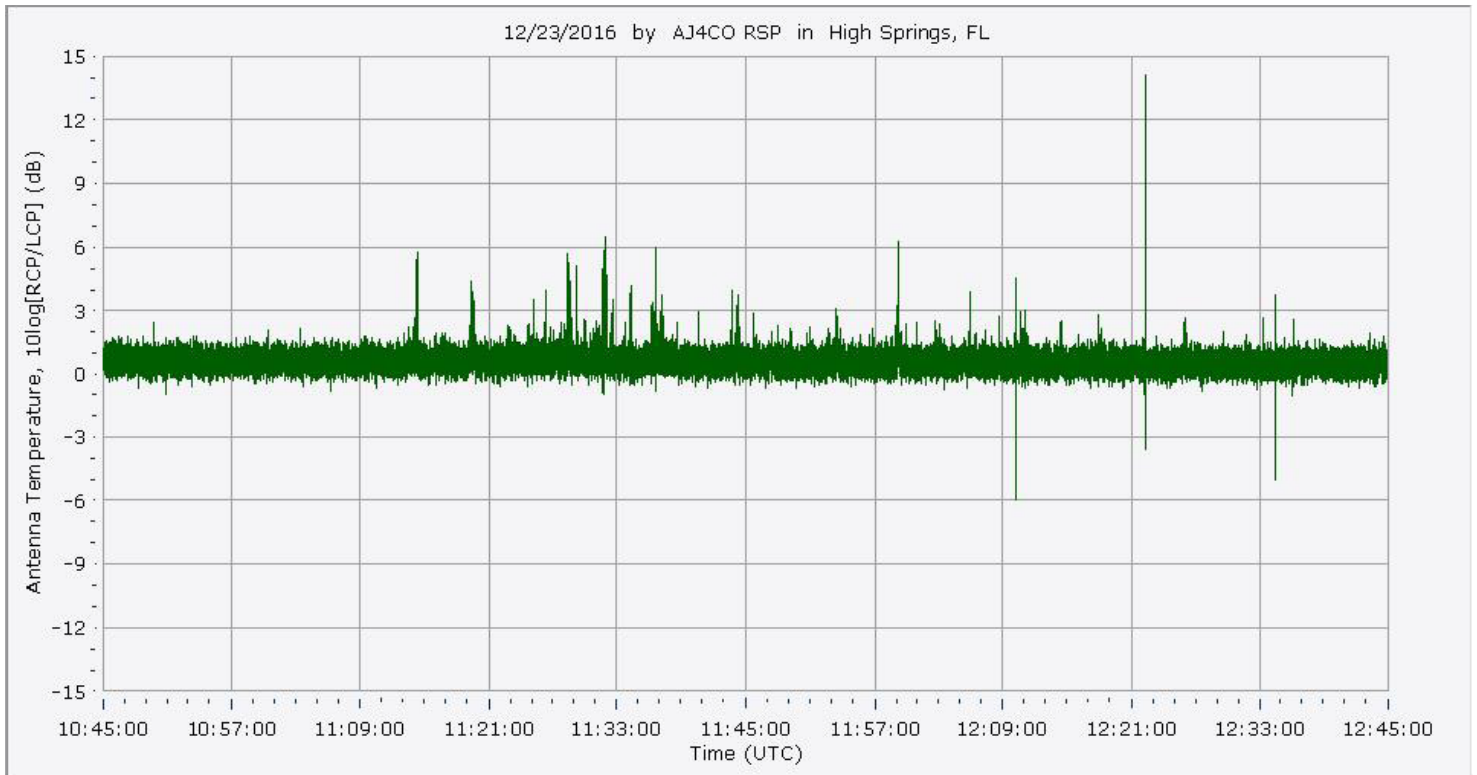
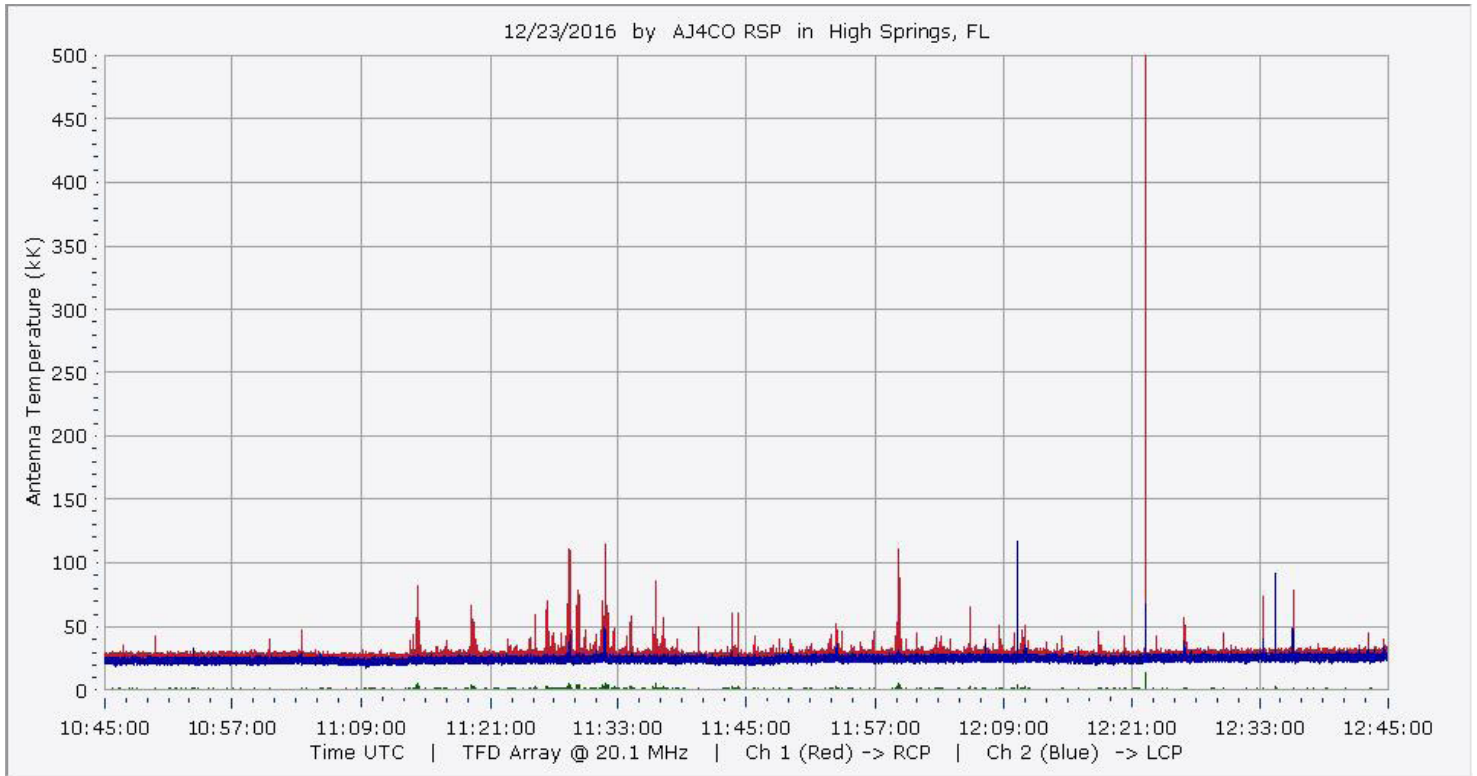


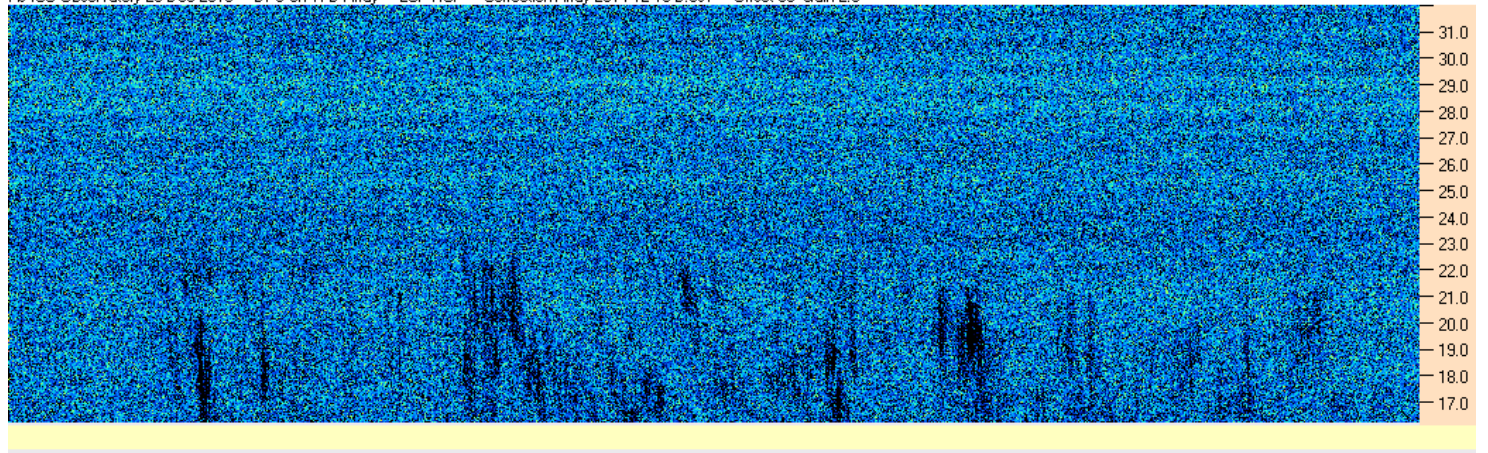
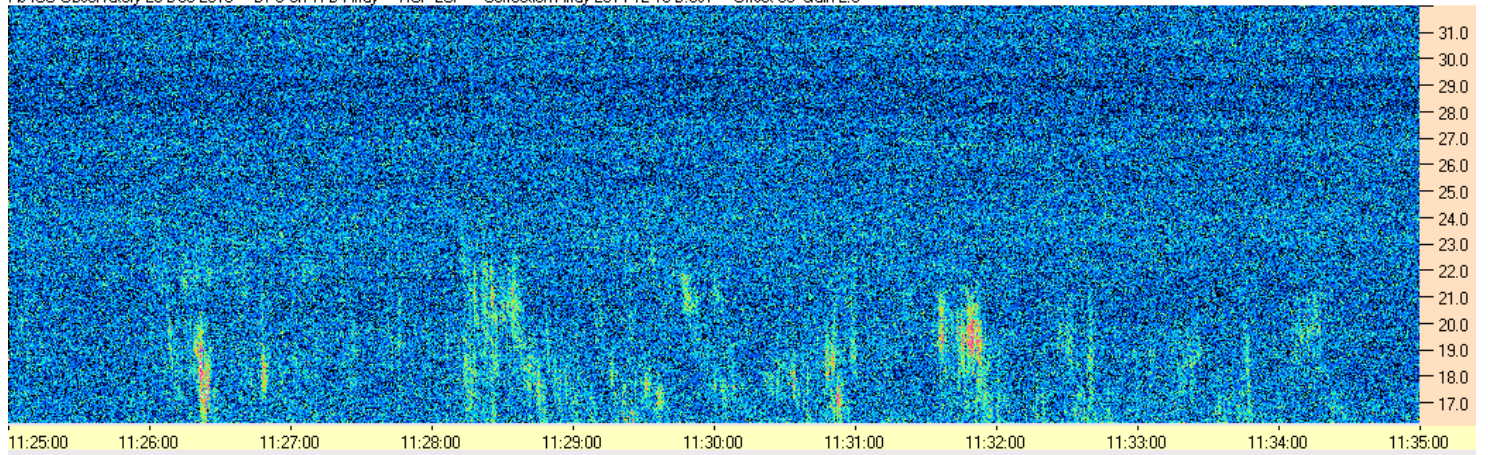
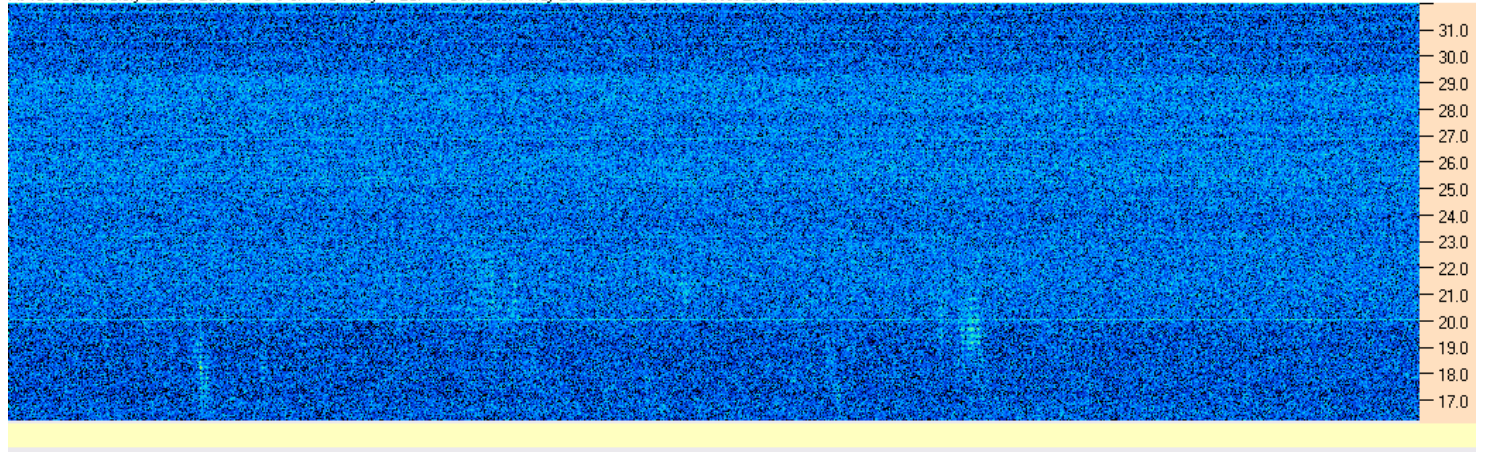
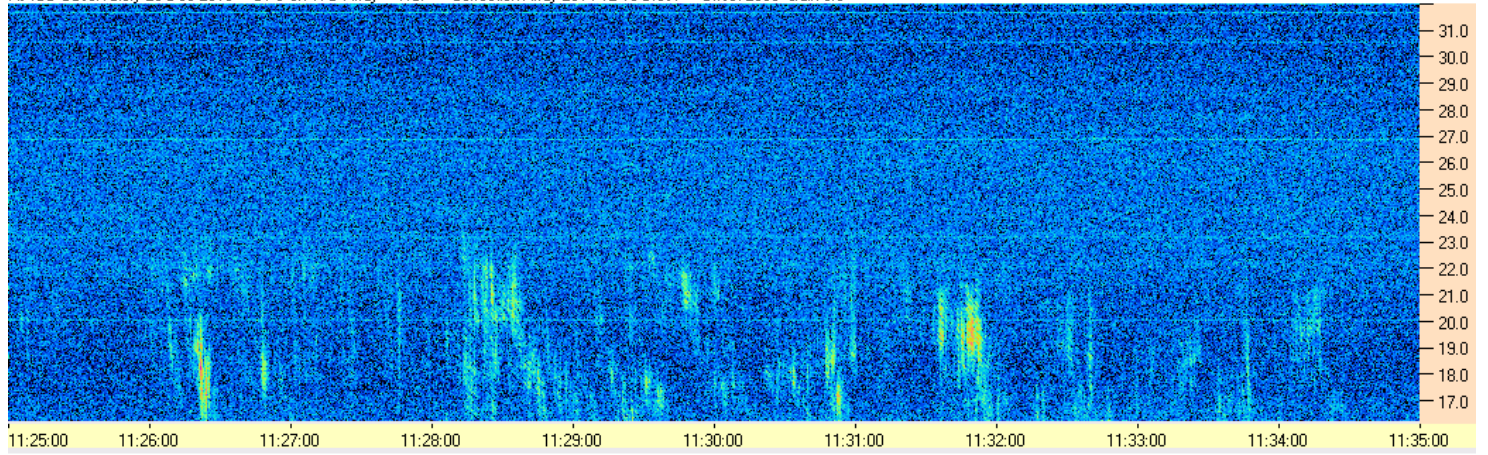
Sky map with array HPBW in green.

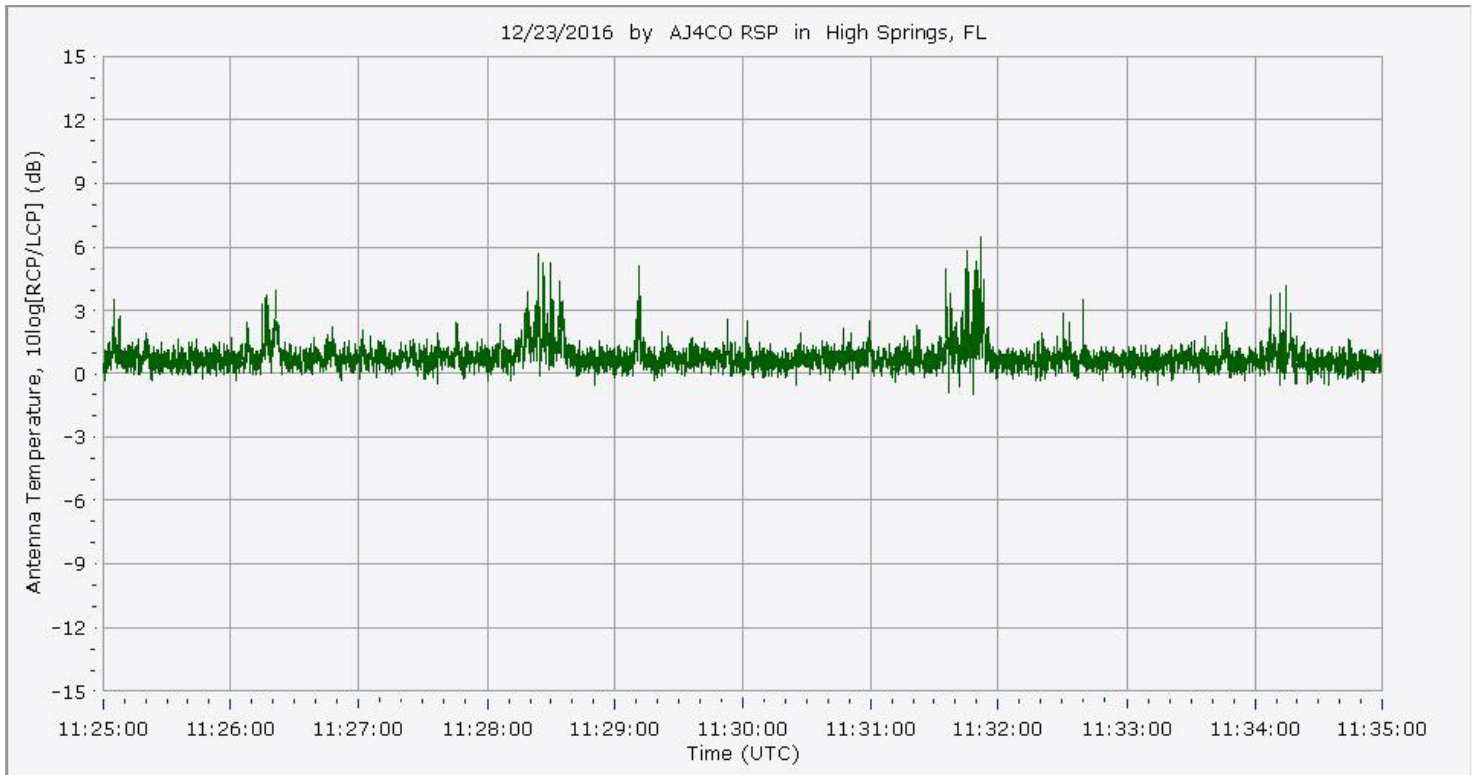
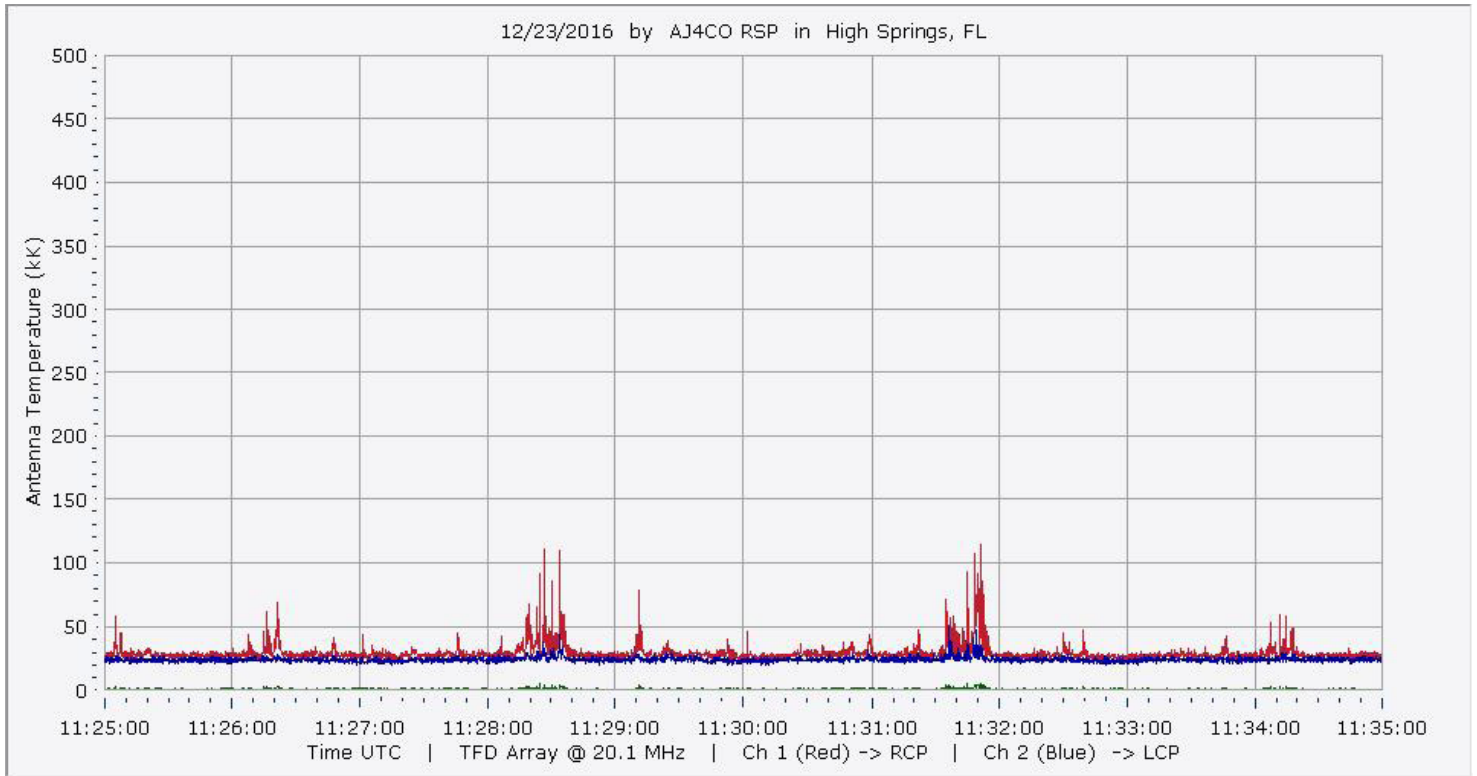


CML-Io phase plane.

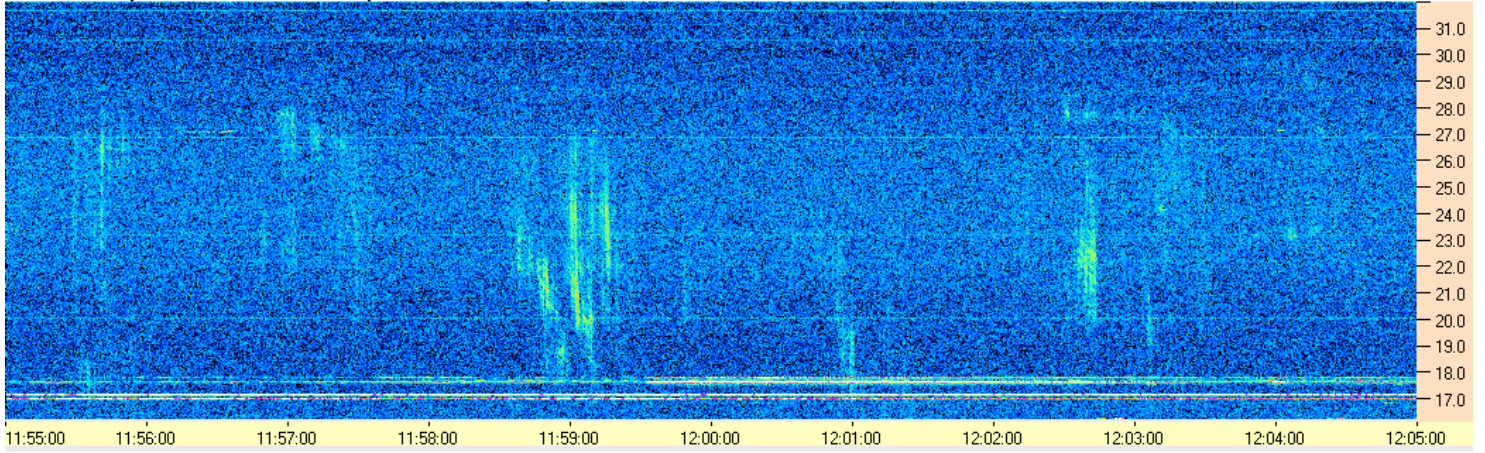




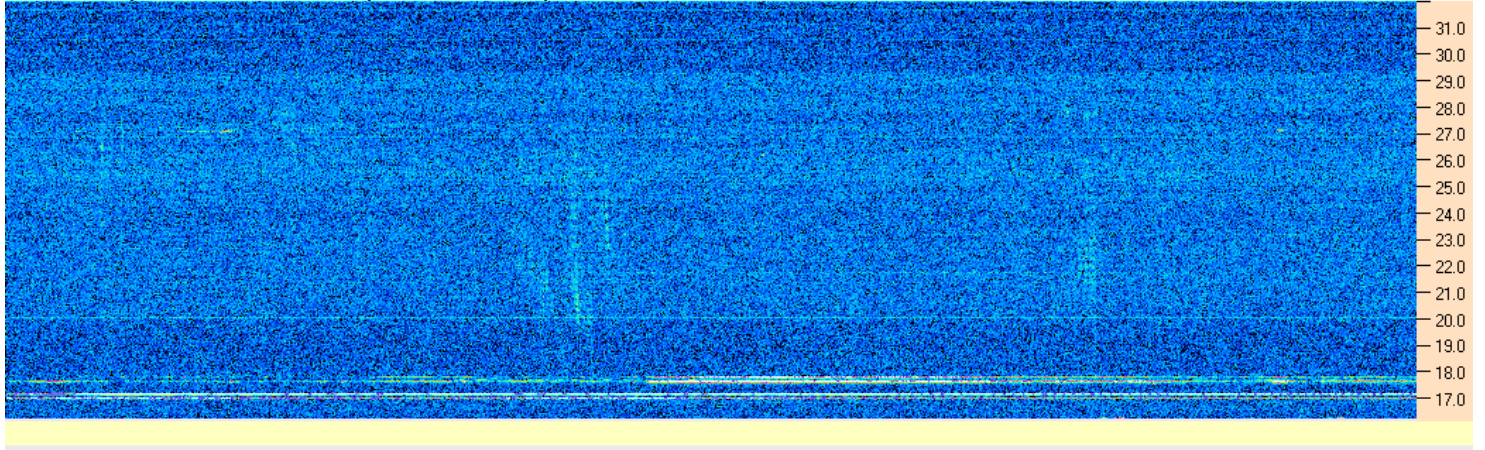




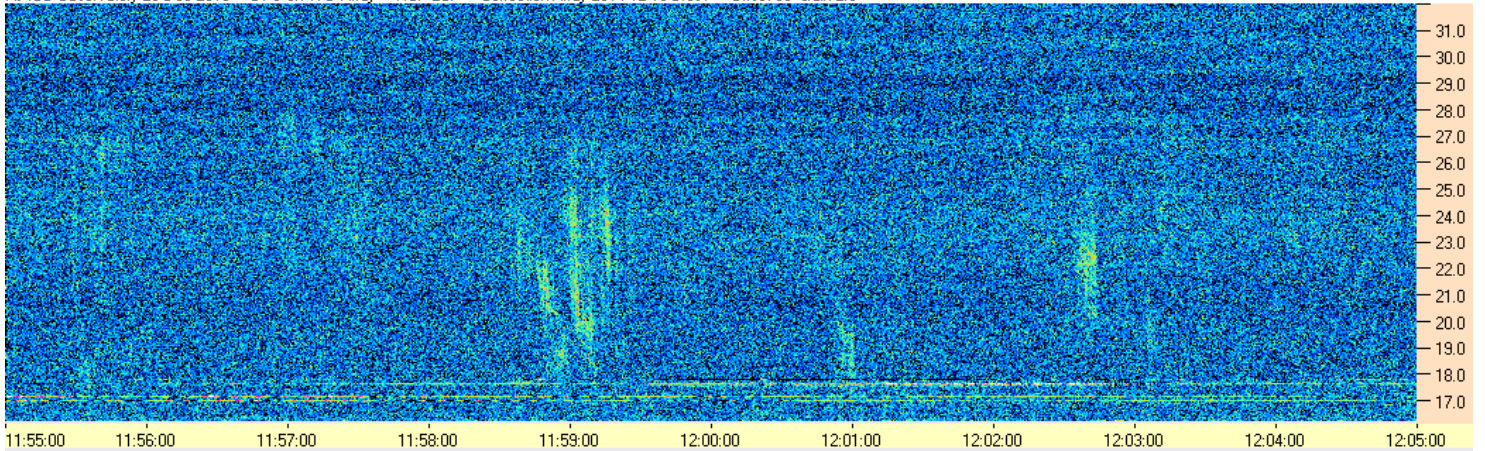
AJ4CO Observatory 23 Dec 2016 - DPS on TFD Array - RCP - Correction Array 2014 12 18 B.csv - Offset 2050 Gain 5.0



AJ4CO Observatory 23 Dec 2016 - DPS on TFD Array - LCP - Correction Array 2014 12 18 B.csv - Offset 2050 Gain 5.0



AJ4CO Observatory 23 Dec 2016 - DPS on TFD Array - RCP-LCP - Correction Array 2014 12 18 B.csv - Offset 50 Gain 2.0



AJ4CO Observatory 23 Dec 2016 - DPS on TFD Array - LCP-RCP - Correction Array 2014 12 18 B.csv - Offset 50 Gain 2.0

