

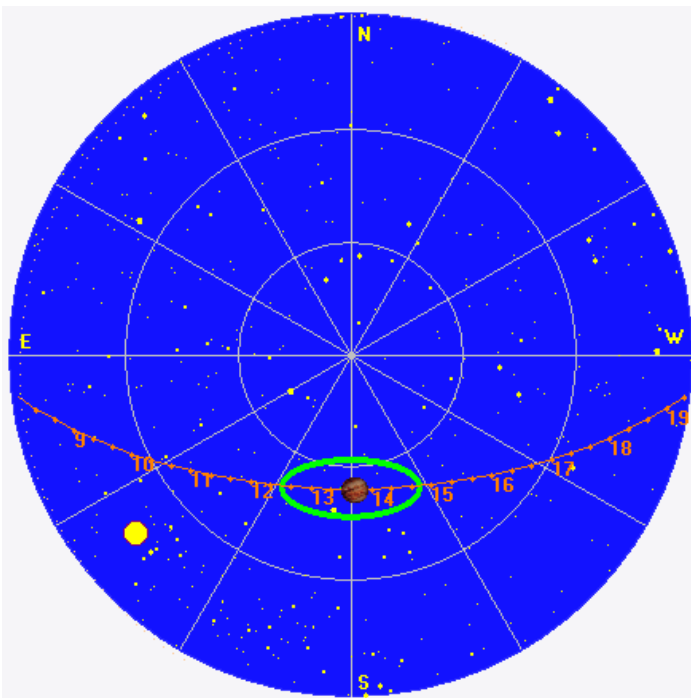
Good non-Io-A below 20 MHz.

RCP dominant L bursting 1314–1414 UTC from 16 to 20 MHz, negative frequency drift emission envelopes.

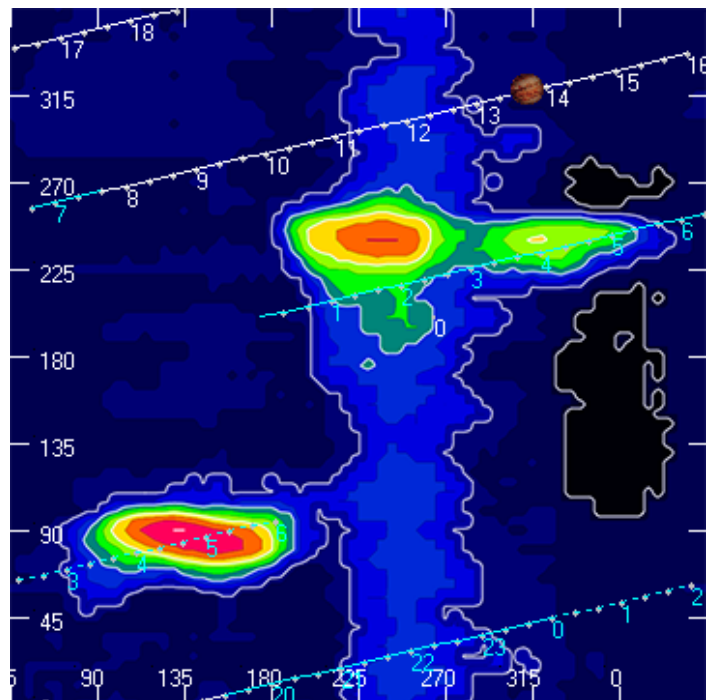
Jupiter was  $-13^\circ$  to  $+13^\circ$  off axis.

Jupiter was leading the Sun by  $55^\circ$ .

Jupiter's location at midpoint of observed emission (1344 UTC)

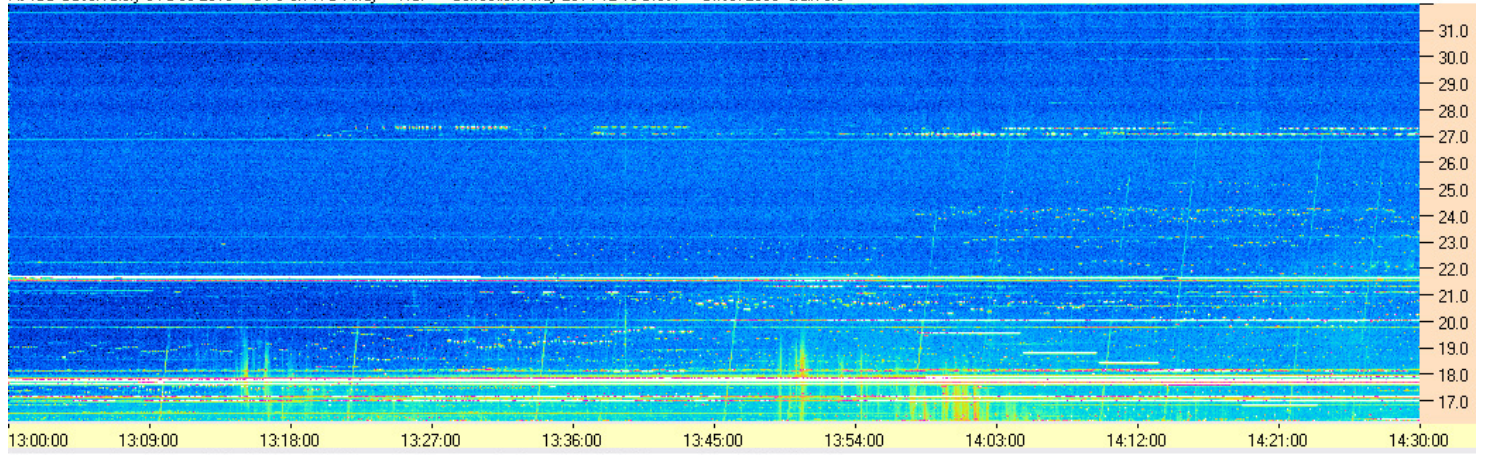


Sky map with array HPBW in green.

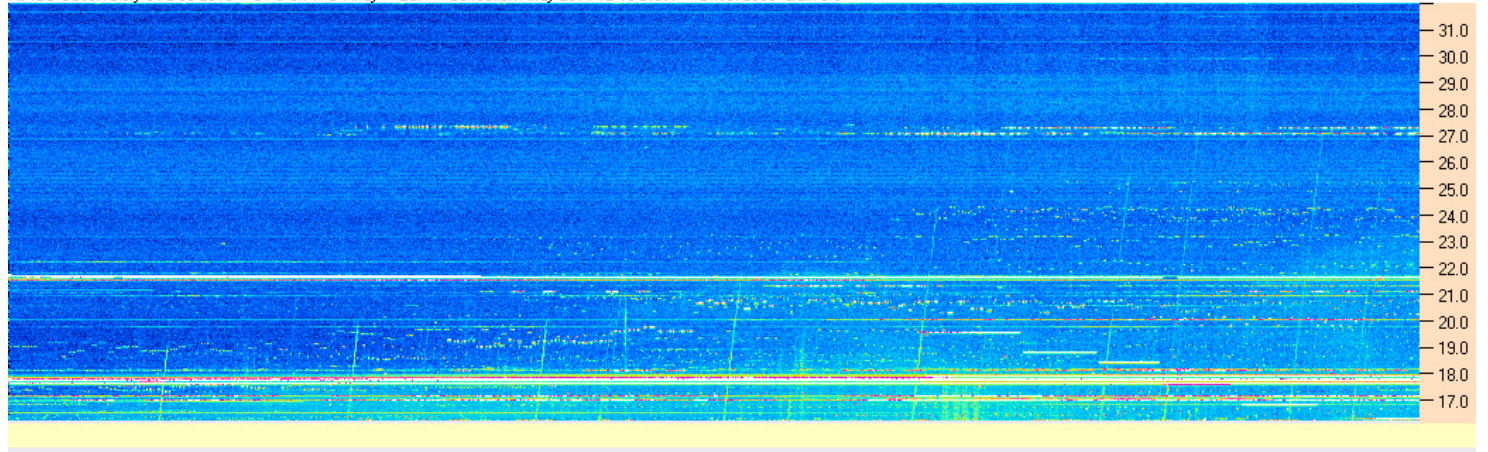


CML-Io phase plane.

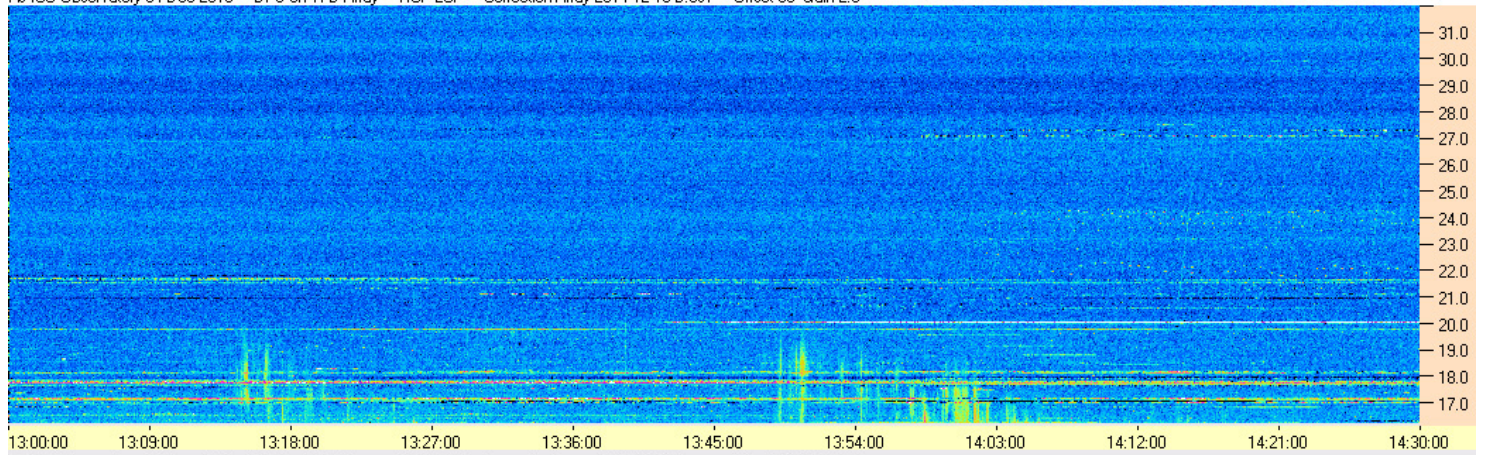
AJ4CO Observatory 04 Dec 2016 - DPS on TFD Array - RCP - Correction Array 2014 12 18 B.csv - Offset 2050 Gain 5.0



AJ4CO Observatory 04 Dec 2016 - DPS on TFD Array - LCP - Correction Array 2014 12 18 B.csv - Offset 2050 Gain 5.0



AJ4CO Observatory 04 Dec 2016 - DPS on TFD Array - RCP-LCP - Correction Array 2014 12 18 B.csv - Offset 50 Gain 2.0



AJ4CO Observatory 04 Dec 2016 - DPS on TFD Array - LCP-RCP - Correction Array 2014 12 18 B.csv - Offset 50 Gain 2.0

