

Some Io-C at solar noon. Slight hint of Io-A from 1500 to 1530 UTC, but not enough to log as an observed emission event.

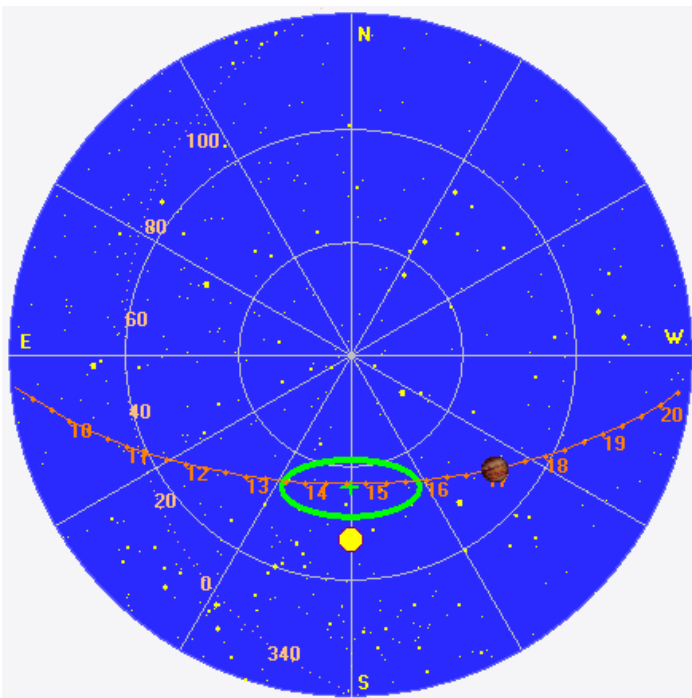
Very clear polarization record from the Jove receivers; peaking at >500 kK and >9 dB LCP. Strangely enough, poorly seen in the DPS polarization differences spectrogram on the shortest time scale shown below (5½ minutes). Usually the situation is reversed. Shows that single frequency records and spectrograms work together; one cannot replace the other.

LCP dominant N events 1645–1730 UTC from 18 to 21 MHz, zero frequency drift emission envelopes.

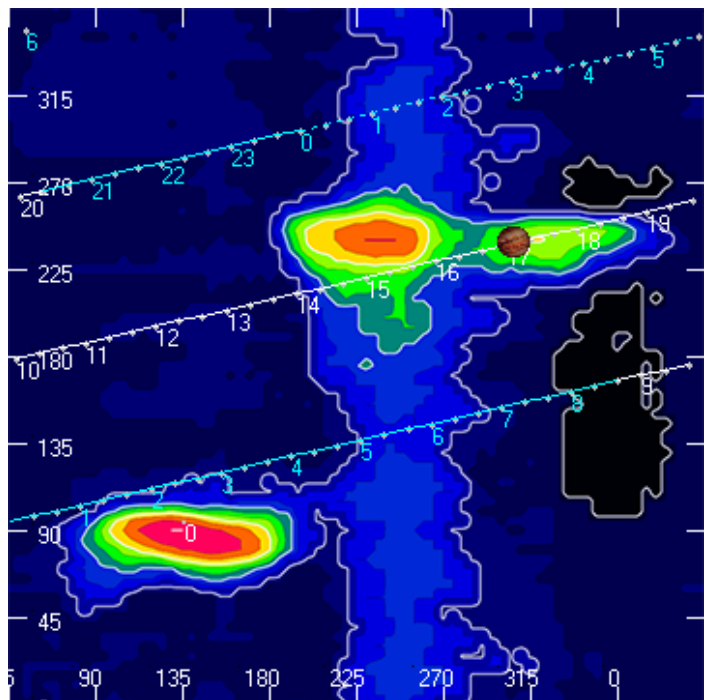
Jupiter was $+31^\circ$ to $+42^\circ$ off axis.

Jupiter was leading the Sun by 39° .

Jupiter's location at midpoint of observed emission (1707 UTC)

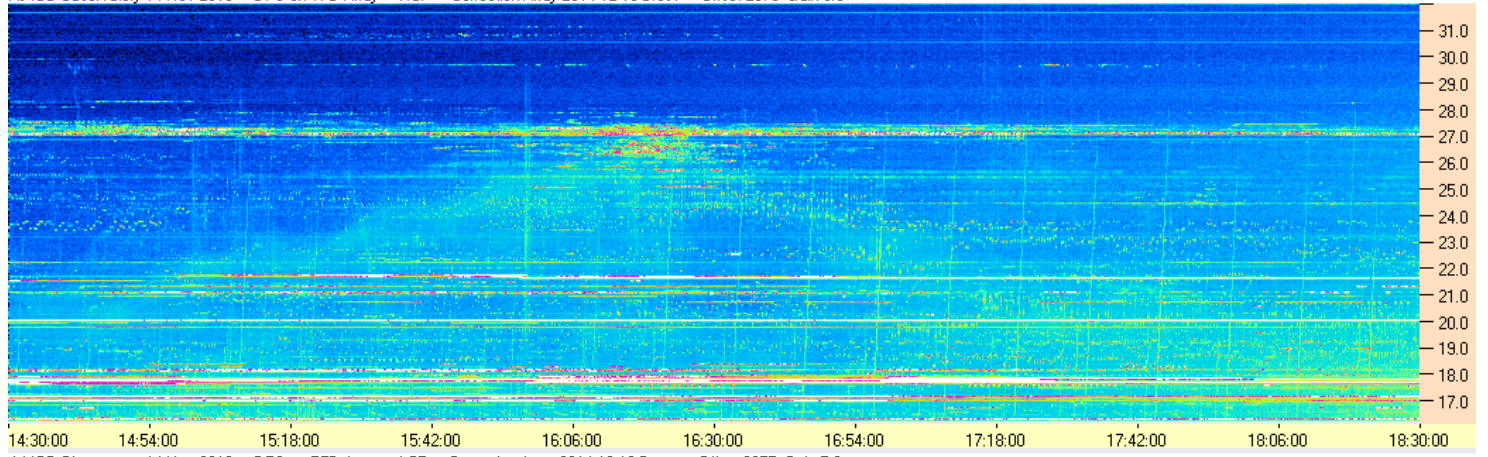


Sky map with array HPBW in green.

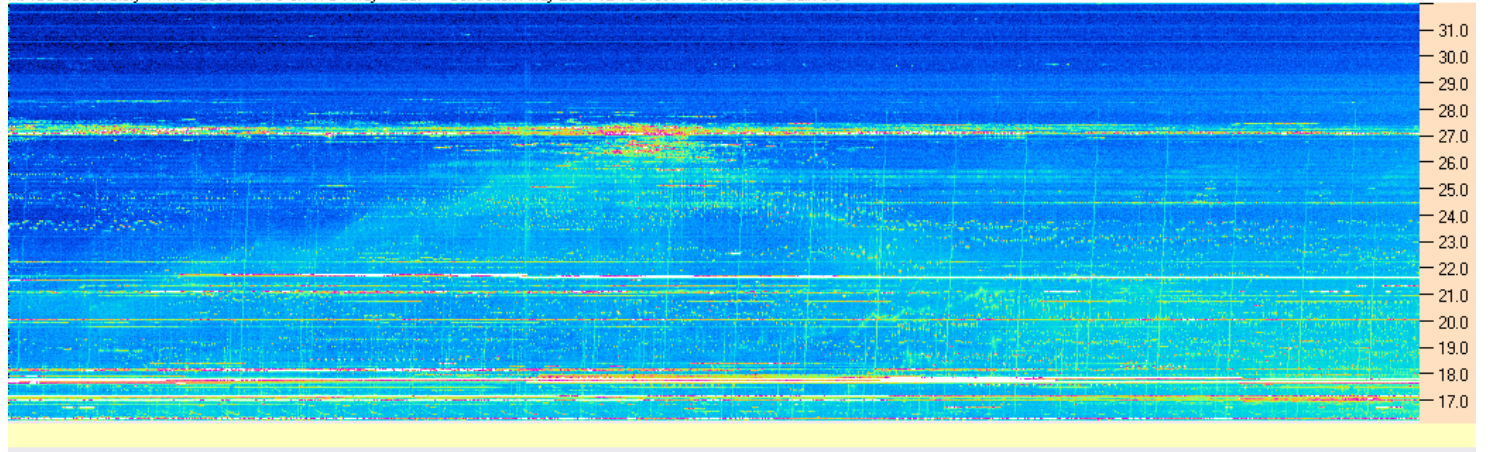


CML-Io phase plane.

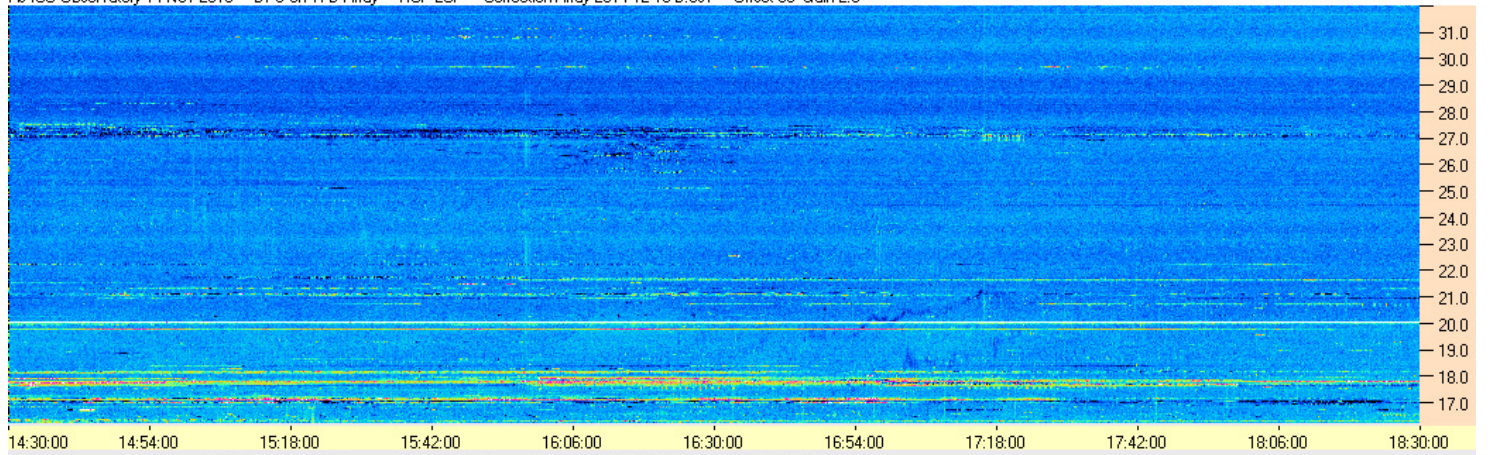
AJ4CO Observatory 14 Nov 2016 - DPS on TFD Array - RCP - Correction Array 2014 12 18 B.csv - Offset 2075 Gain 5.0



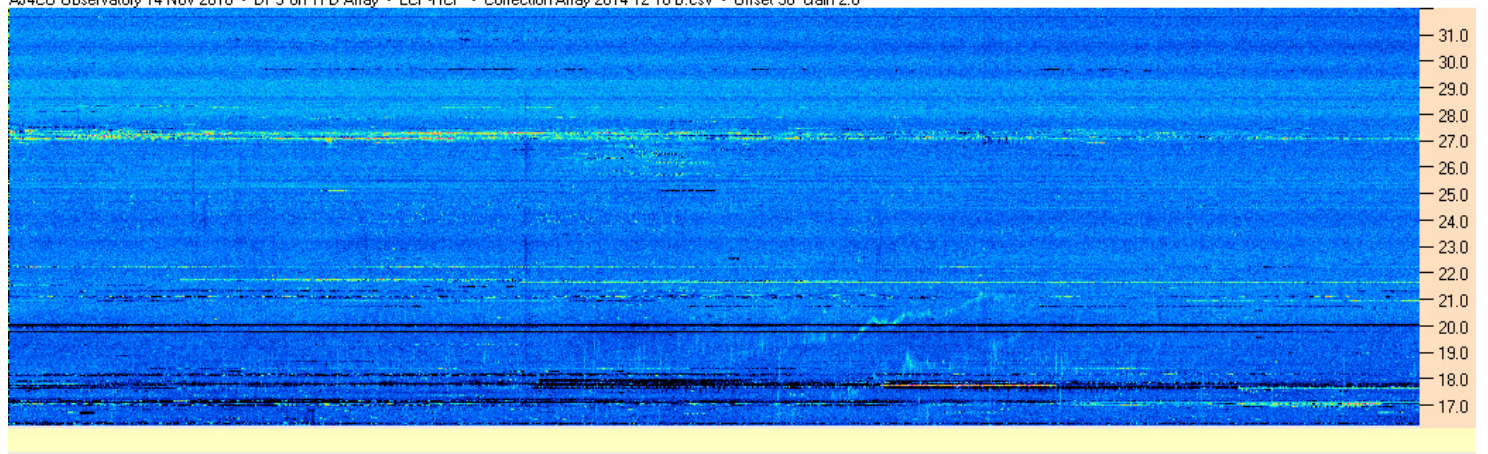
AJ4CO Observatory 14 Nov 2016 - DPS on TFD Array - LCP - Correction Array 2014 12 18 B.csv - Offset 2075 Gain 5.0

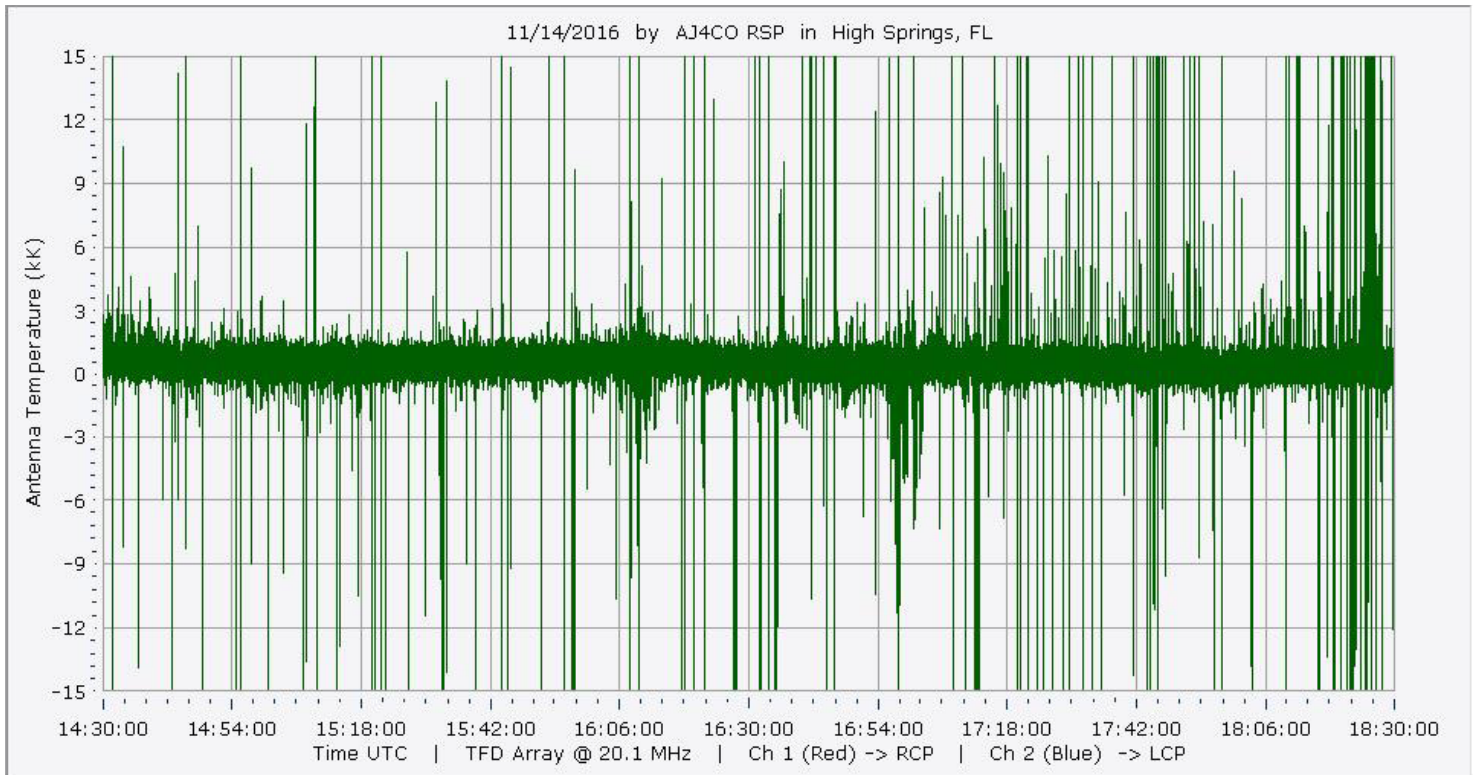
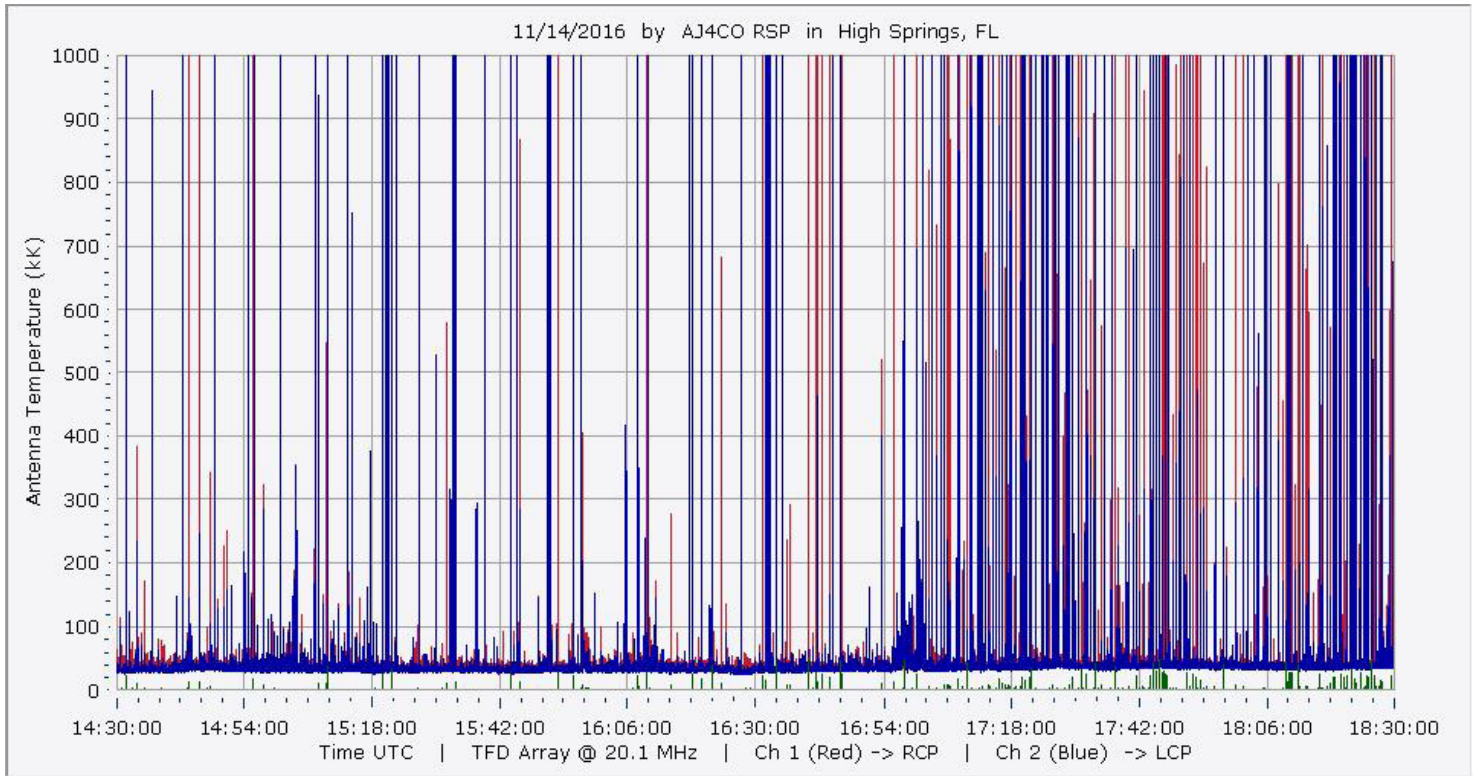


AJ4CO Observatory 14 Nov 2016 - DPS on TFD Array - RCP-LCP - Correction Array 2014 12 18 B.csv - Offset 50 Gain 2.0

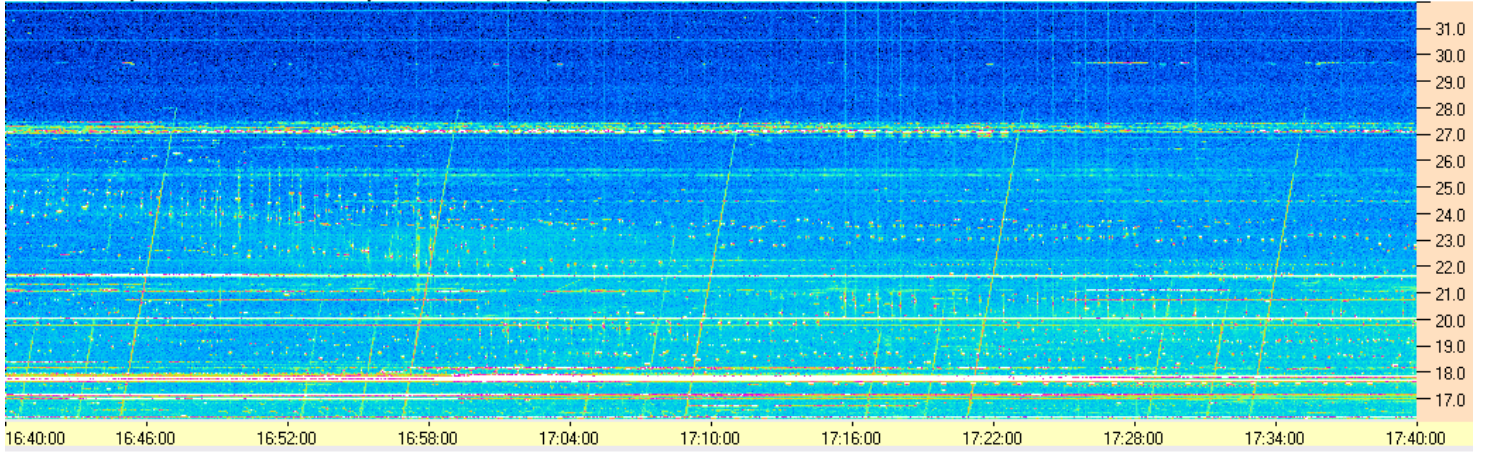


AJ4CO Observatory 14 Nov 2016 - DPS on TFD Array - LCP-RCP - Correction Array 2014 12 18 B.csv - Offset 50 Gain 2.0

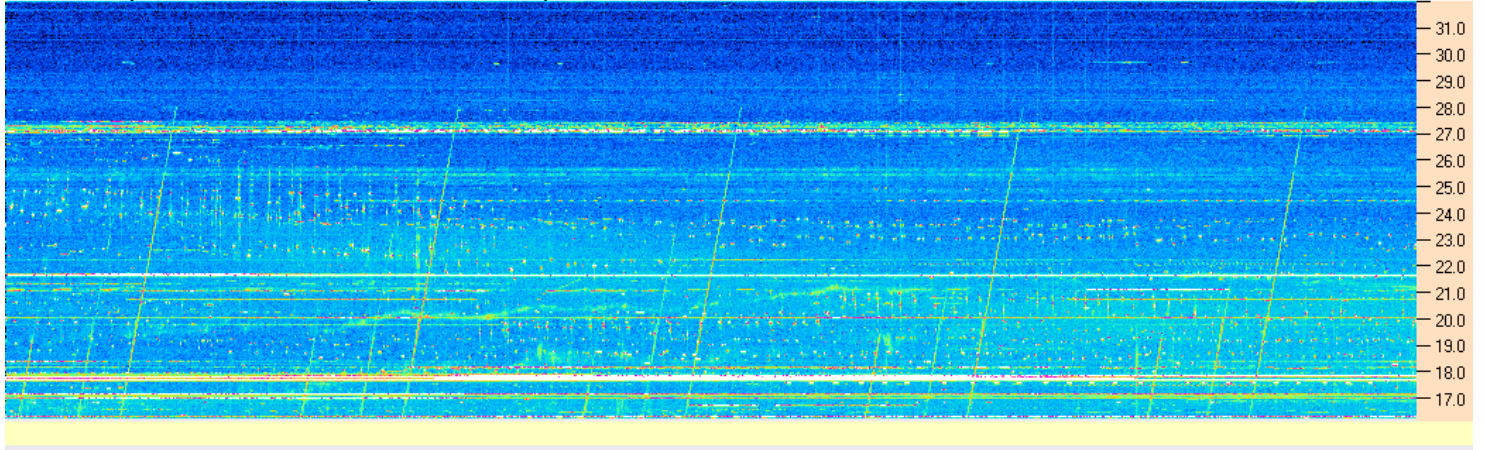




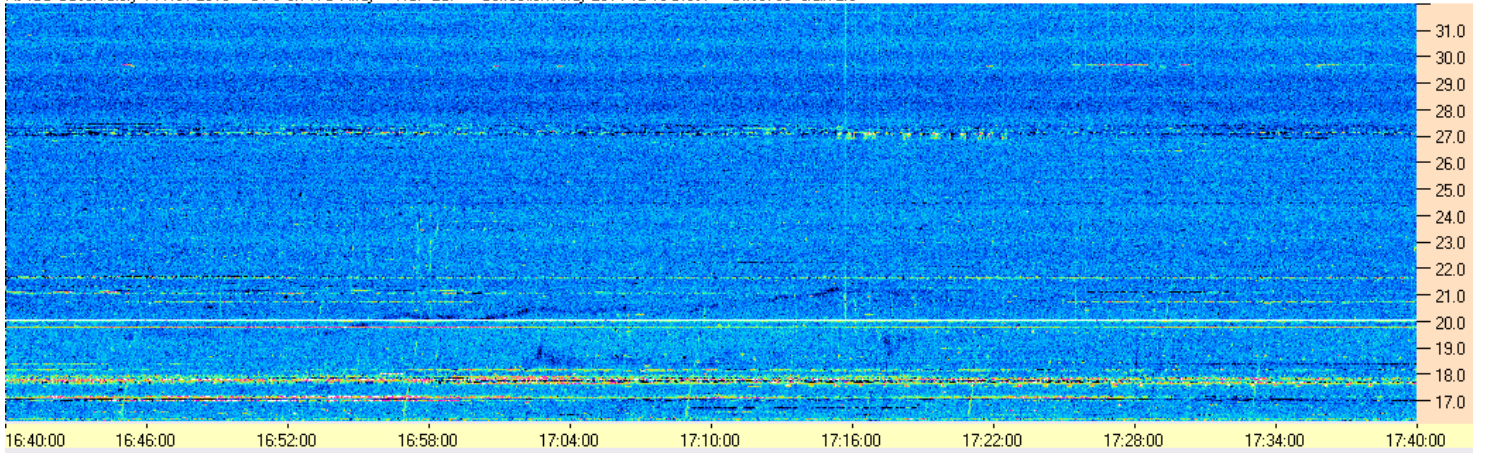
AJ4CO Observatory 14 Nov 2016 - DPS on TFD Array - RCP - Correction Array 2014 12 18 B.csv - Offset 2075 Gain 5.0



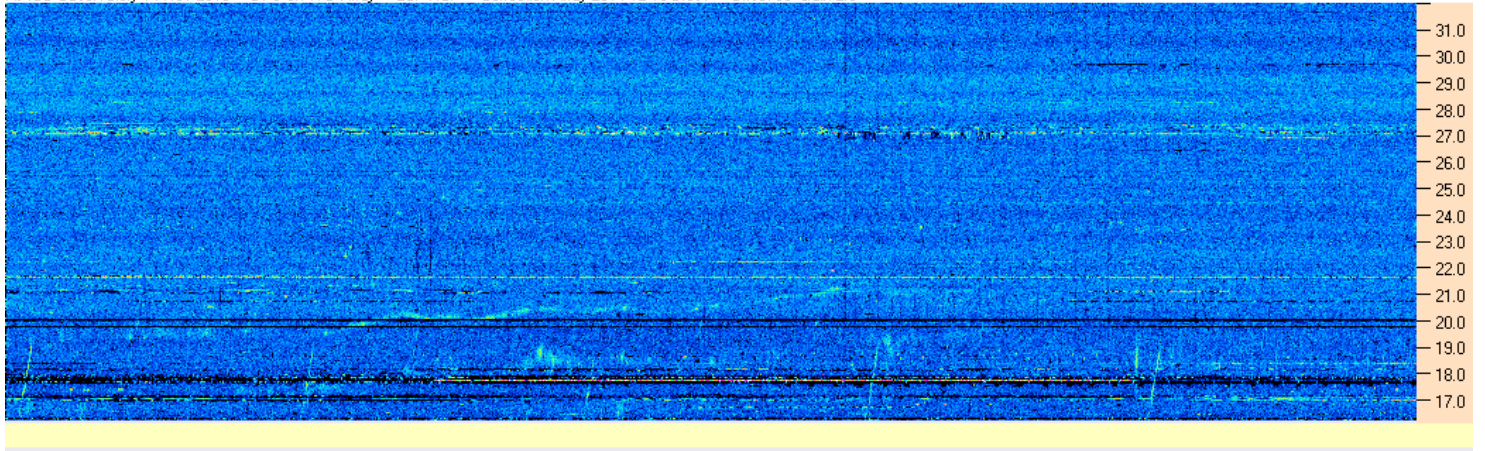
AJ4CO Observatory 14 Nov 2016 - DPS on TFD Array - LCP - Correction Array 2014 12 18 B.csv - Offset 2075 Gain 5.0

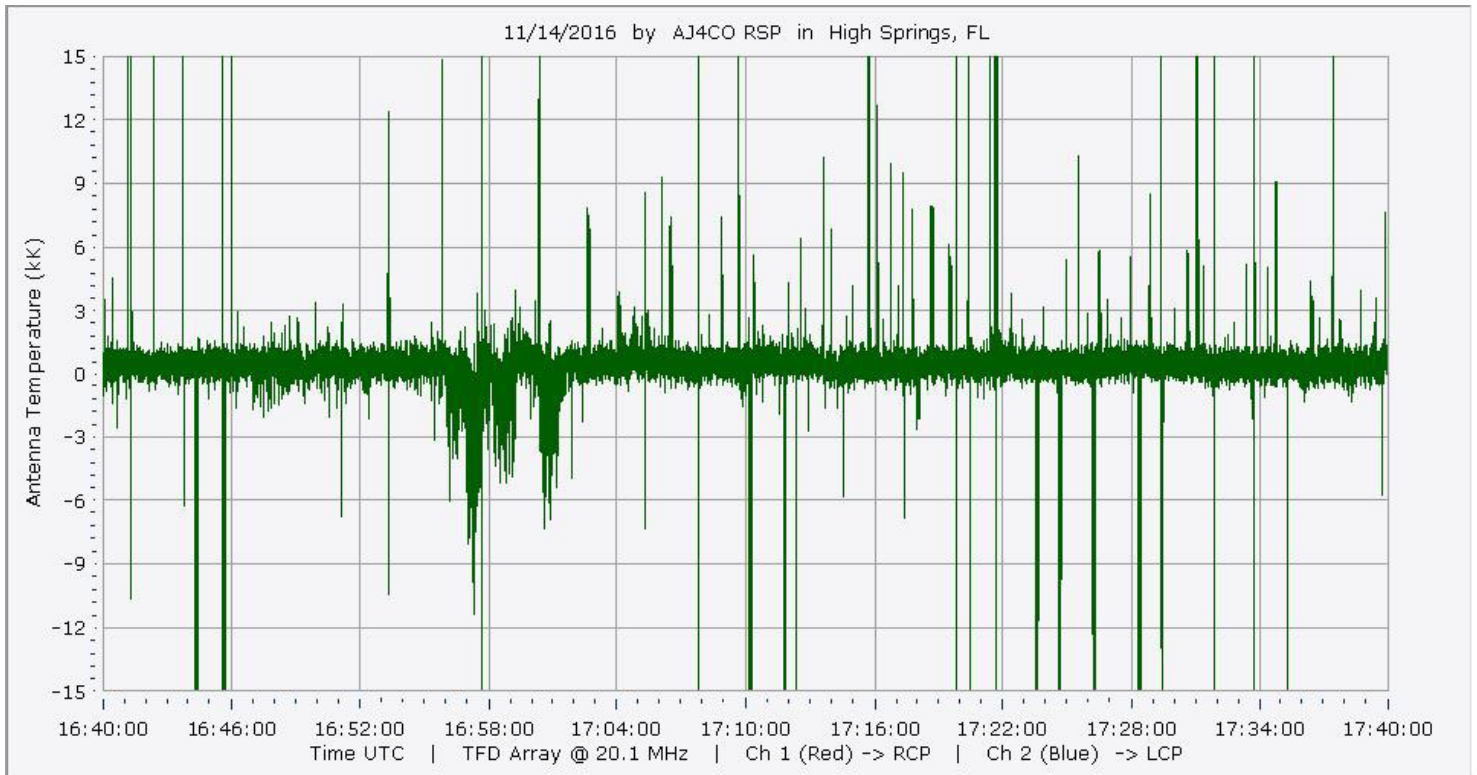
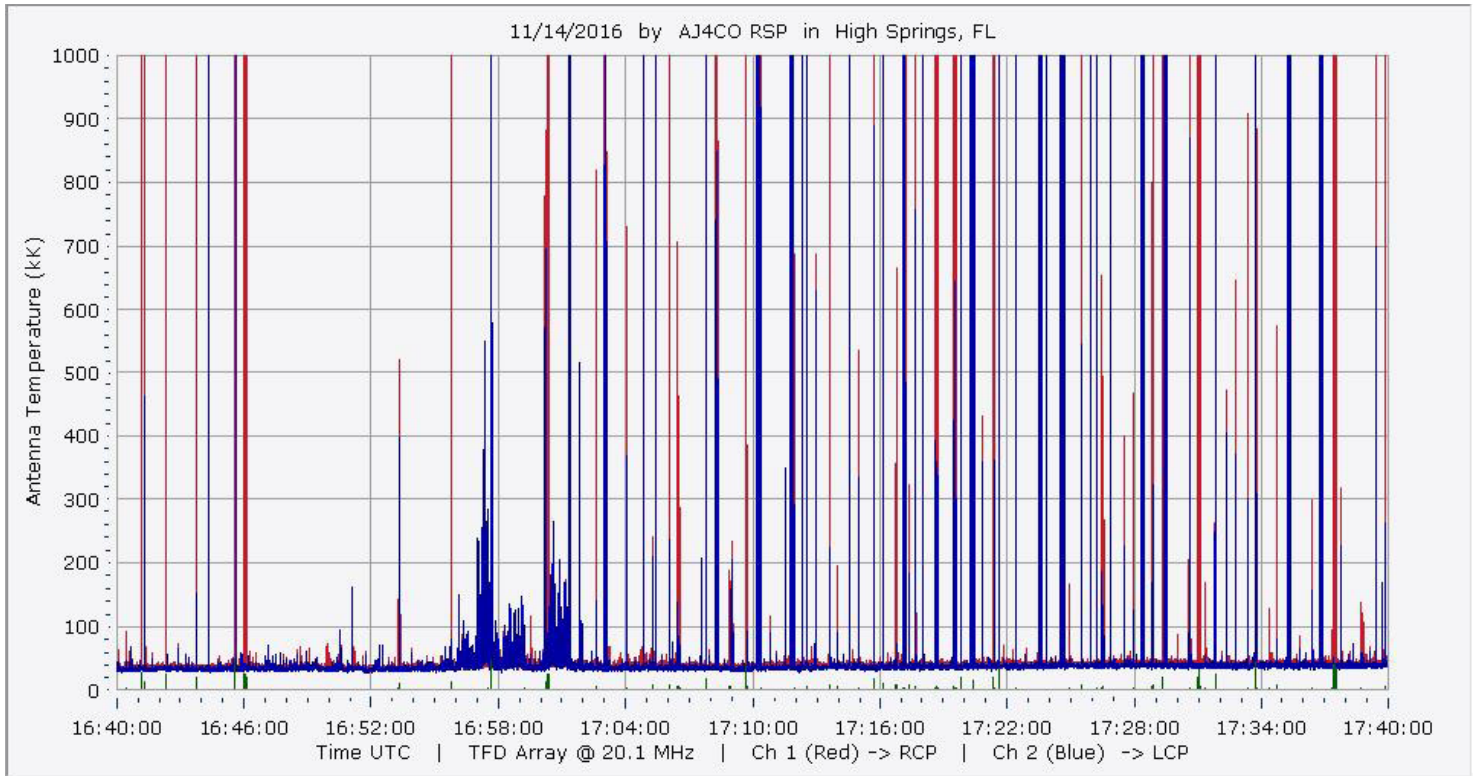


AJ4CO Observatory 14 Nov 2016 - DPS on TFD Array - RCP-LCP - Correction Array 2014 12 18 B.csv - Offset 50 Gain 2.0

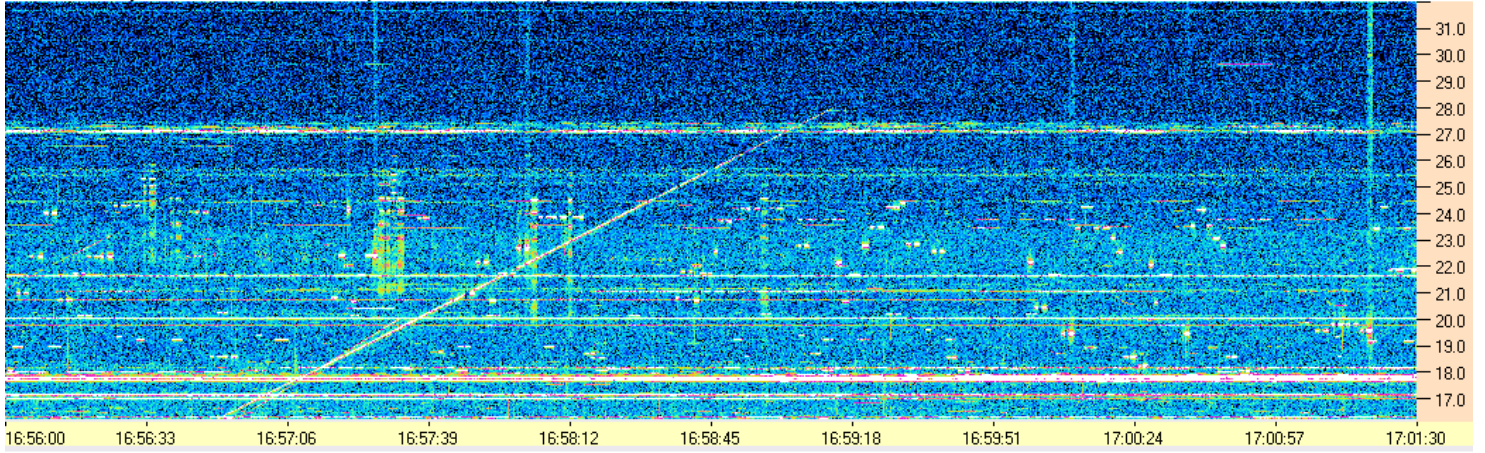


AJ4CO Observatory 14 Nov 2016 - DPS on TFD Array - LCP-RCP - Correction Array 2014 12 18 B.csv - Offset 50 Gain 2.0

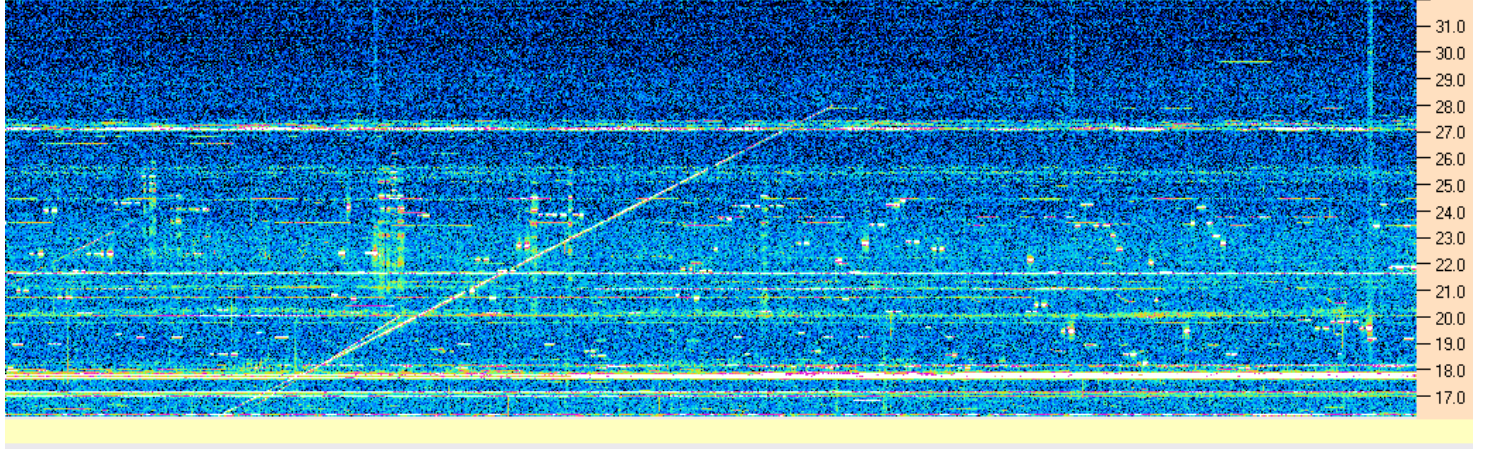




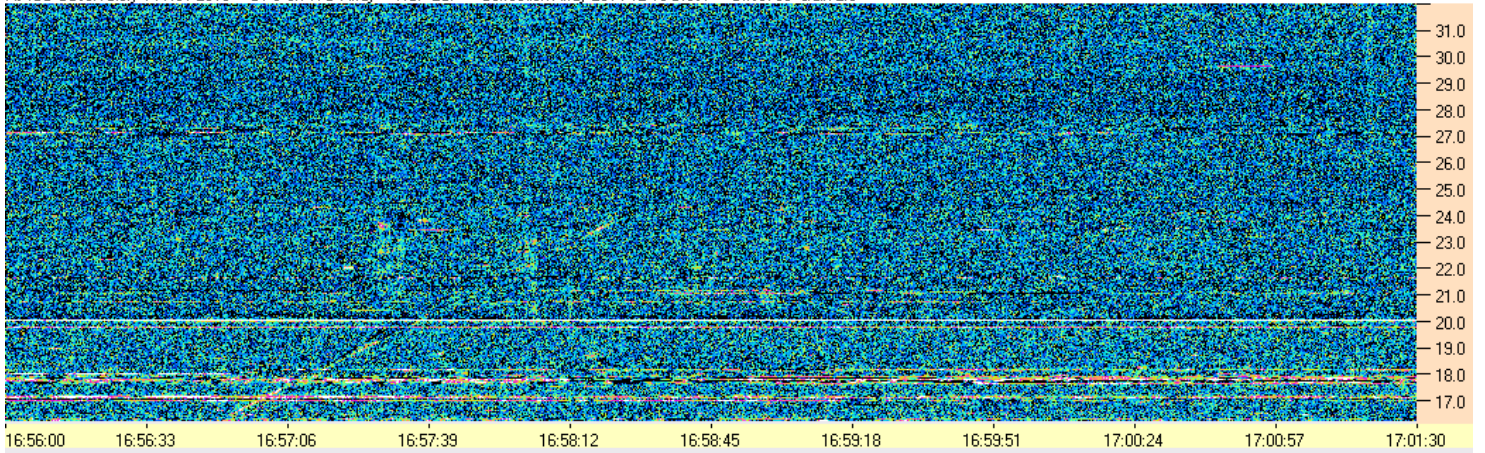
AJ4CO Observatory 14 Nov 2016 - DPS on TFD Array - RCP - Correction Array 2014 12 18 B.csv - Offset 2100 Gain 5.0



AJ4CO Observatory 14 Nov 2016 - DPS on TFD Array - LCP - Correction Array 2014 12 18 B.csv - Offset 2100 Gain 5.0



AJ4CO Observatory 14 Nov 2016 - DPS on TFD Array - RCP-LCP - Correction Array 2014 12 18 B.csv - Offset 50 Gain 2.0



AJ4CO Observatory 14 Nov 2016 - DPS on TFD Array - LCP-RCP - Correction Array 2014 12 18 B.csv - Offset 50 Gain 2.0

