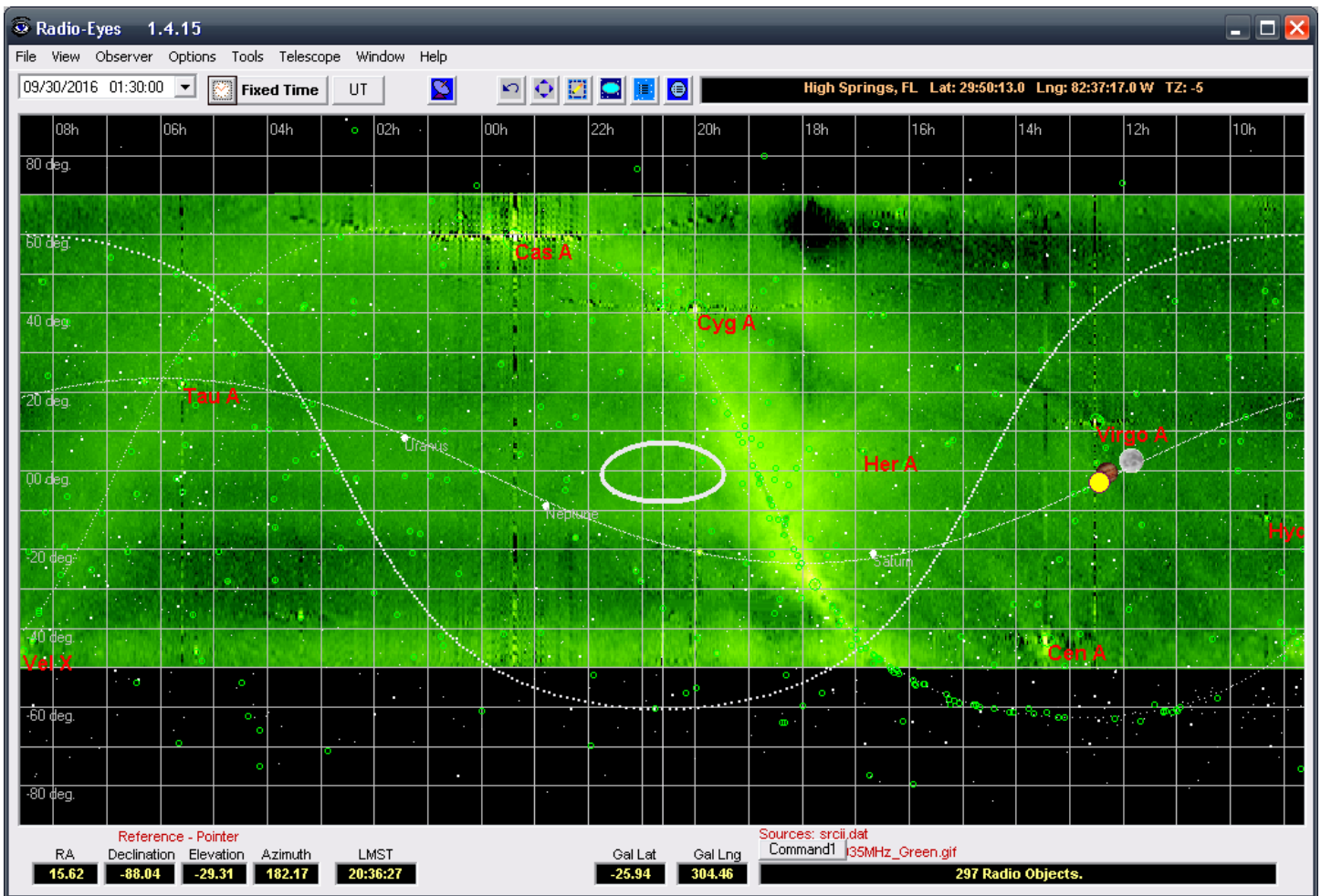
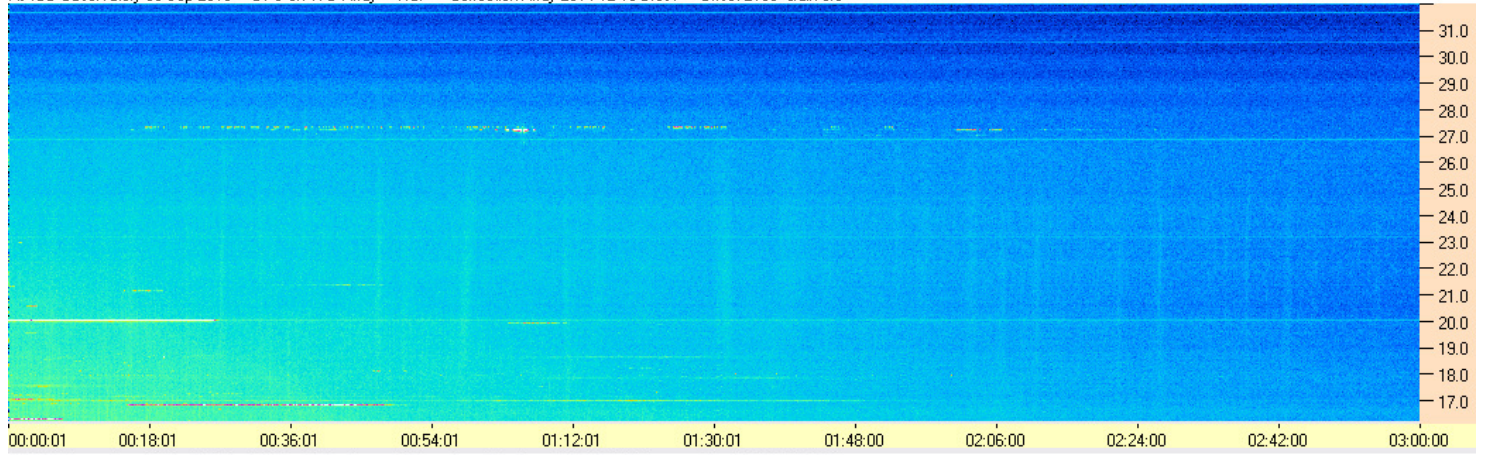


Some nice strong Cyg A scintillation from one of the array's northern sidelobes. Perhaps some Cas A in there too toward the end.

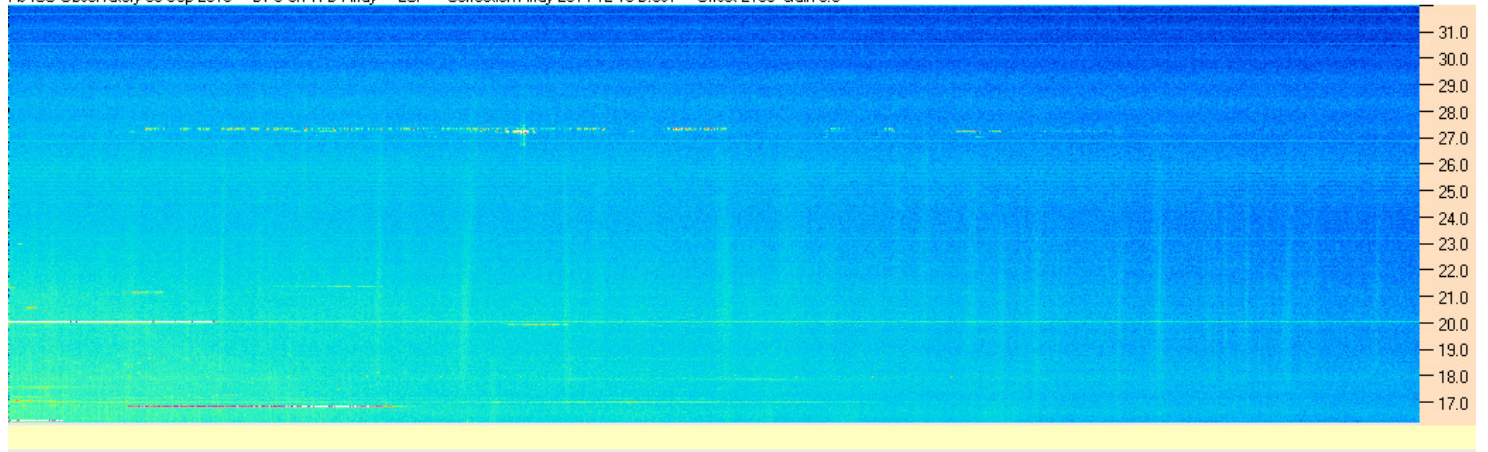
As expected, little to no difference in emission polarization RCP to LCP (i.e., random polarization).



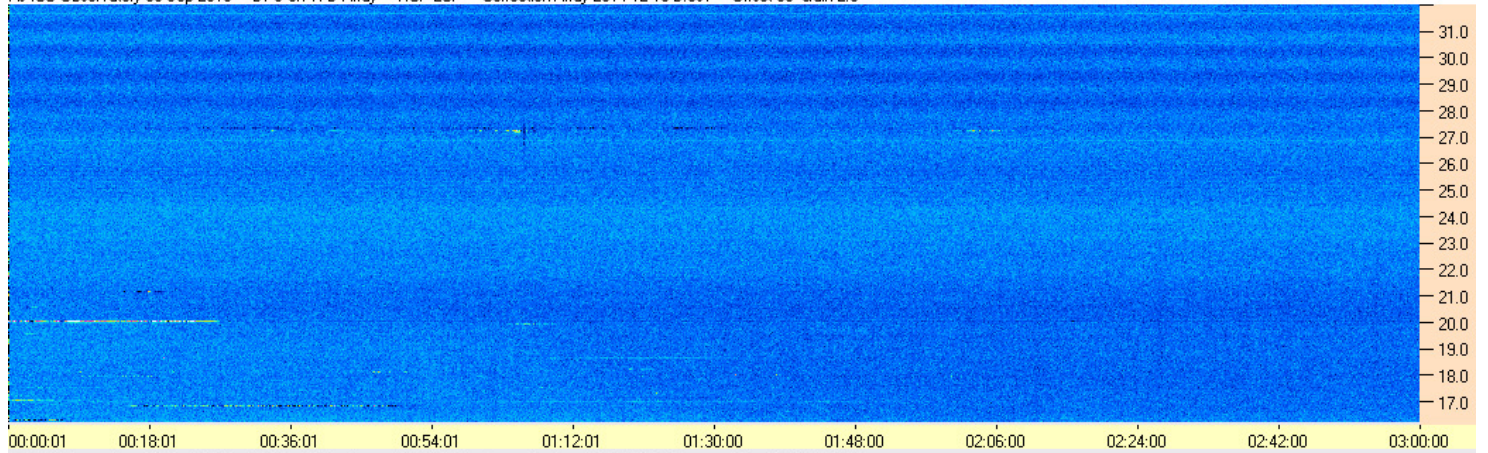
AJ4CO Observatory 30 Sep 2016 - DPS on TFD Array - RCP - Correction Array 2014 12 18 B.csv - Offset 2100 Gain 5.0



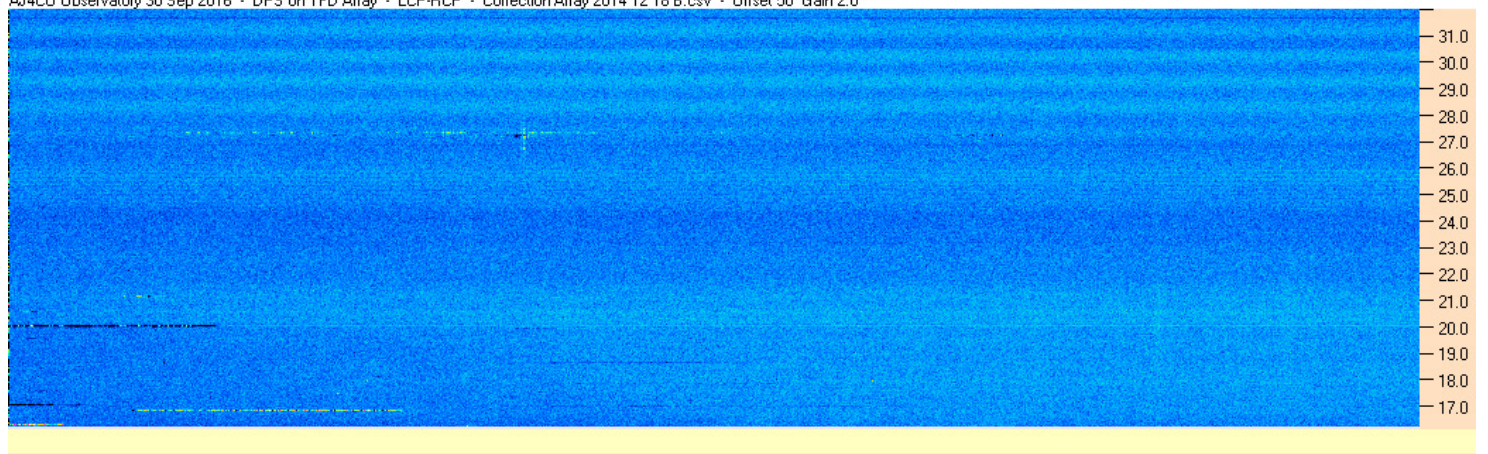
AJ4CO Observatory 30 Sep 2016 - DPS on TFD Array - LCP - Correction Array 2014 12 18 B.csv - Offset 2100 Gain 5.0



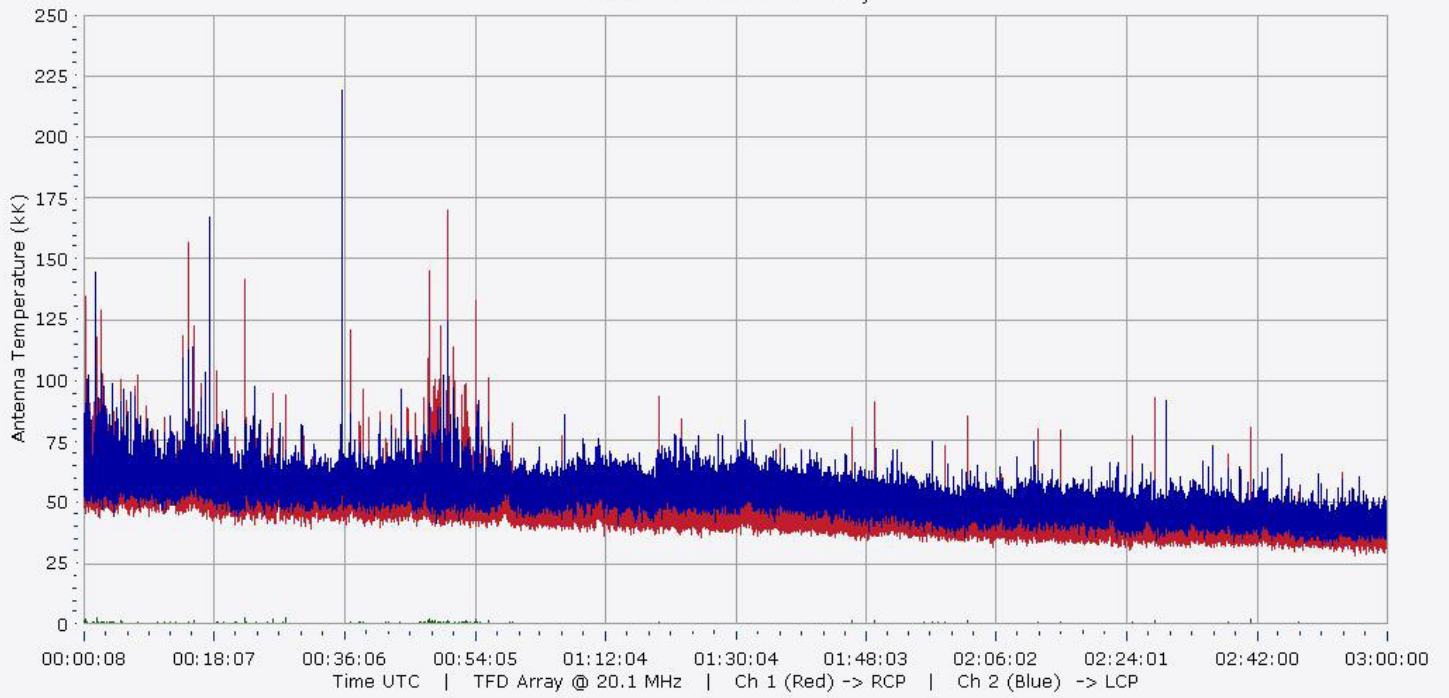
AJ4CO Observatory 30 Sep 2016 - DPS on TFD Array - RCP-LCP - Correction Array 2014 12 18 B.csv - Offset 50 Gain 2.0



AJ4CO Observatory 30 Sep 2016 - DPS on TFD Array - LCP-RCP - Correction Array 2014 12 18 B.csv - Offset 50 Gain 2.0



09/30/2016 AJ4CO Observatory



09/30/2016 AJ4CO Observatory

