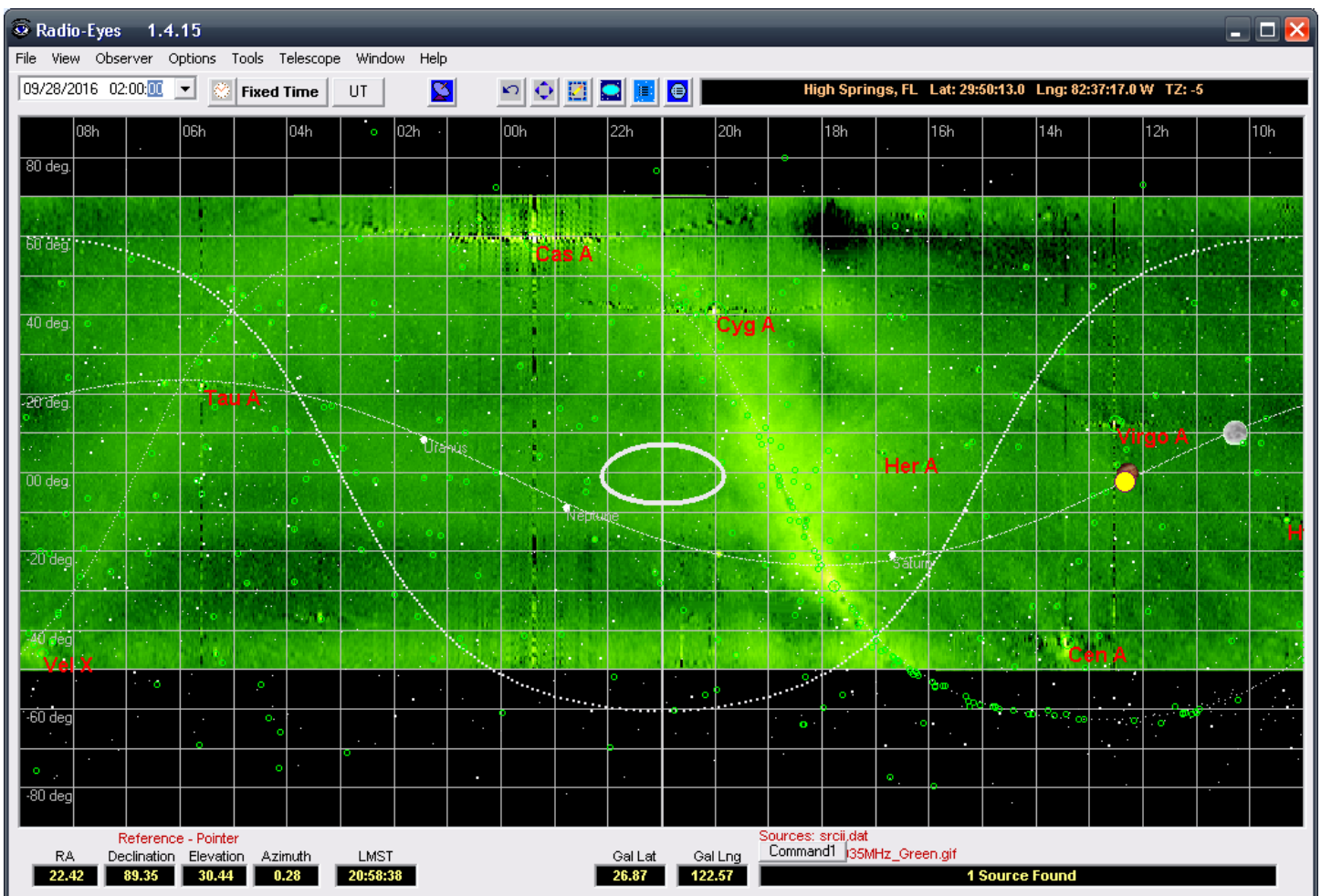
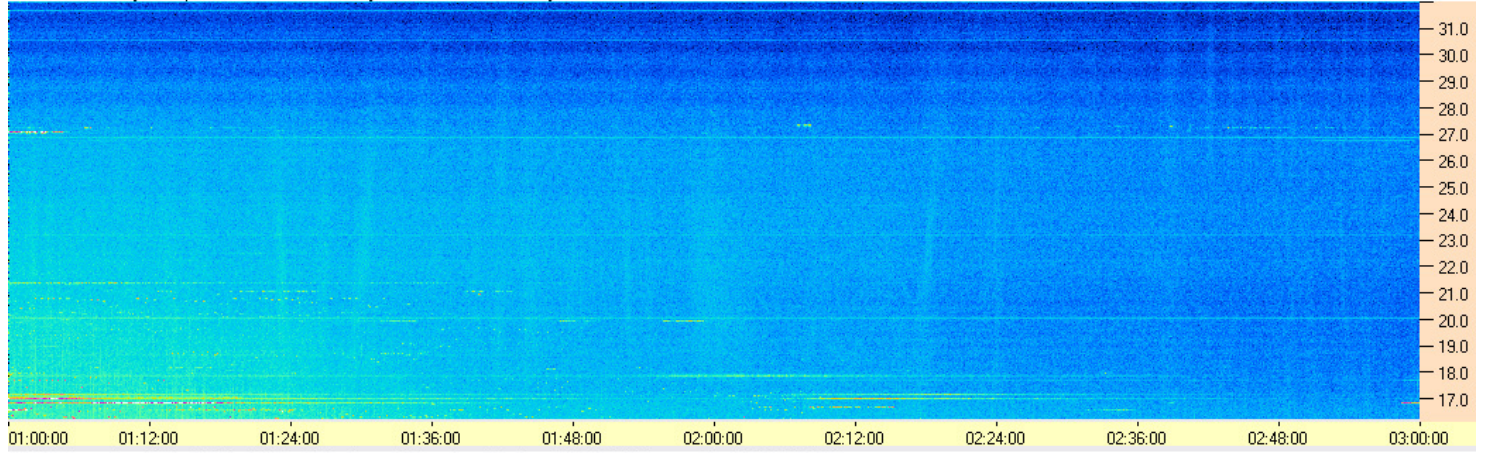


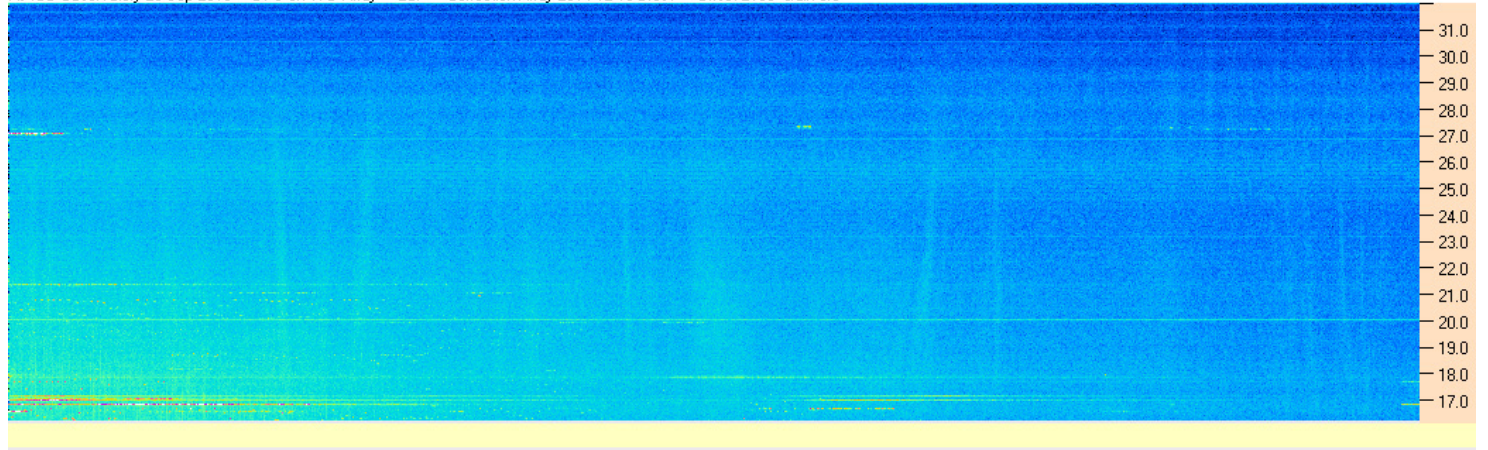
Some nice strong Cyg A scintillation from one of the array's northern sidelobes. Probably some Cas A in there too later on. As expected, little to no difference in emission polarization RCP to LCP (i.e., random polarization).



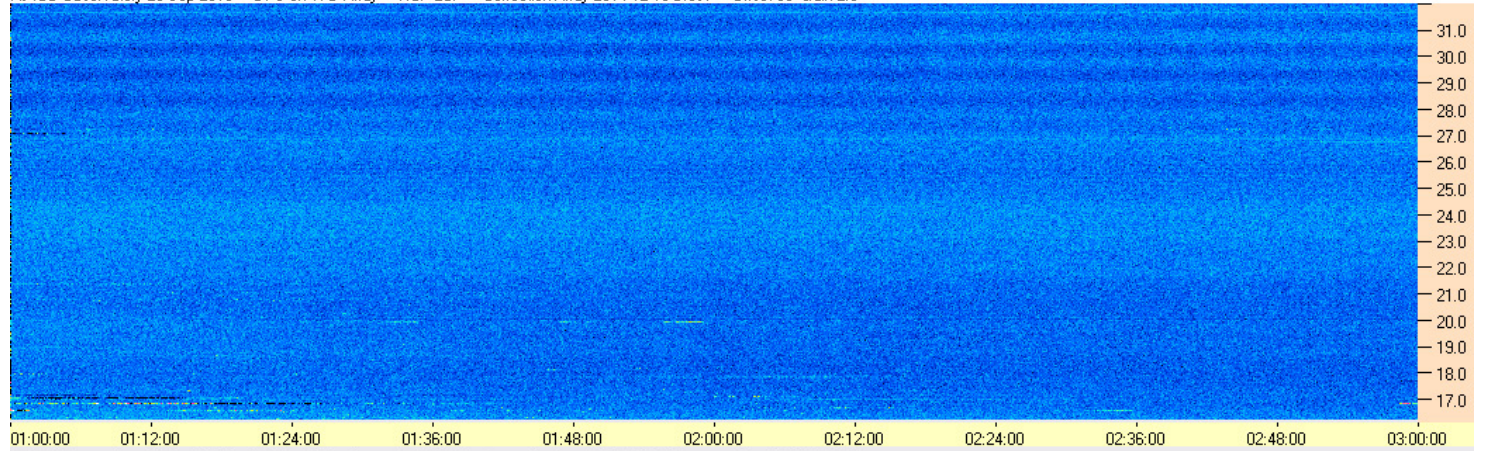
AJ4CO Observatory 28 Sep 2016 - DPS on TFD Array - RCP - Correction Array 2014 12 18 B.csv - Offset 2100 Gain 5.0



AJ4CO Observatory 28 Sep 2016 - DPS on TFD Array - LCP - Correction Array 2014 12 18 B.csv - Offset 2100 Gain 5.0



AJ4CO Observatory 28 Sep 2016 - DPS on TFD Array - RCP-LCP - Correction Array 2014 12 18 B.csv - Offset 50 Gain 2.0



AJ4CO Observatory 28 Sep 2016 - DPS on TFD Array - RCP-LCP - Correction Array 2014 12 18 B.csv - Offset 50 Gain 2.0

