

Some Io-A from Thursday. Weak and diffuse. Only 4 days from conjunction.

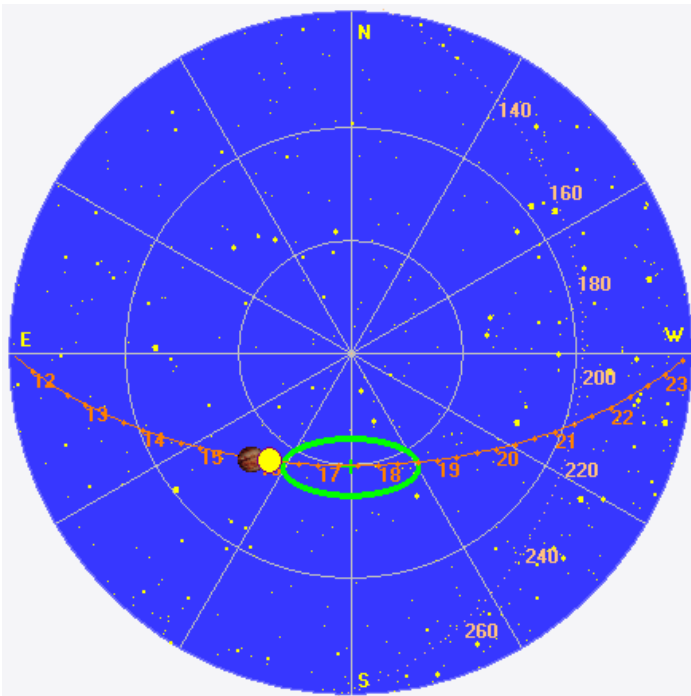
RCP dominant L bursting 1547–1603 UTC from 16 to 21 MHz, negative frequency drift emission envelopes.

Brief line noise circa 1545 UTC.

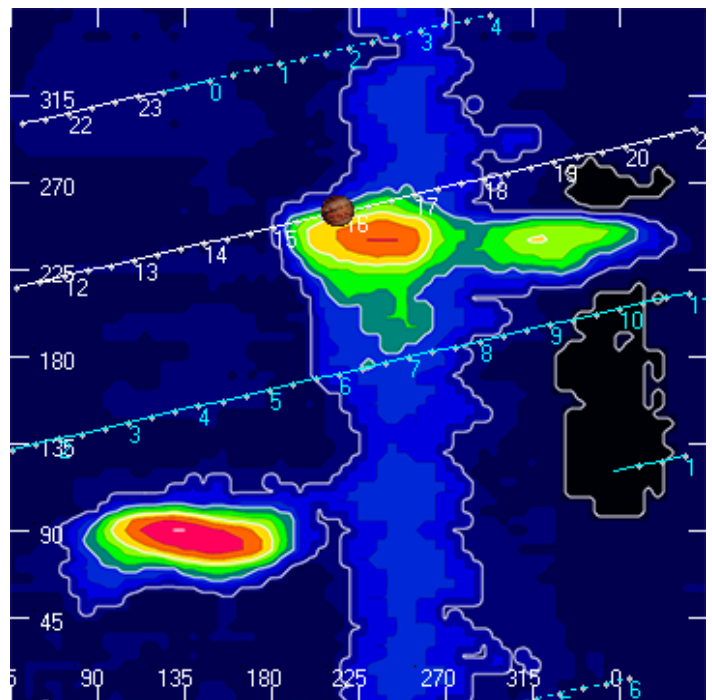
Jupiter was  $-27^\circ$  to  $-23^\circ$  off axis.

Jupiter was trailing the Sun by  $3^\circ$ .

Jupiter's location at midpoint of observed emission (1555 UTC)

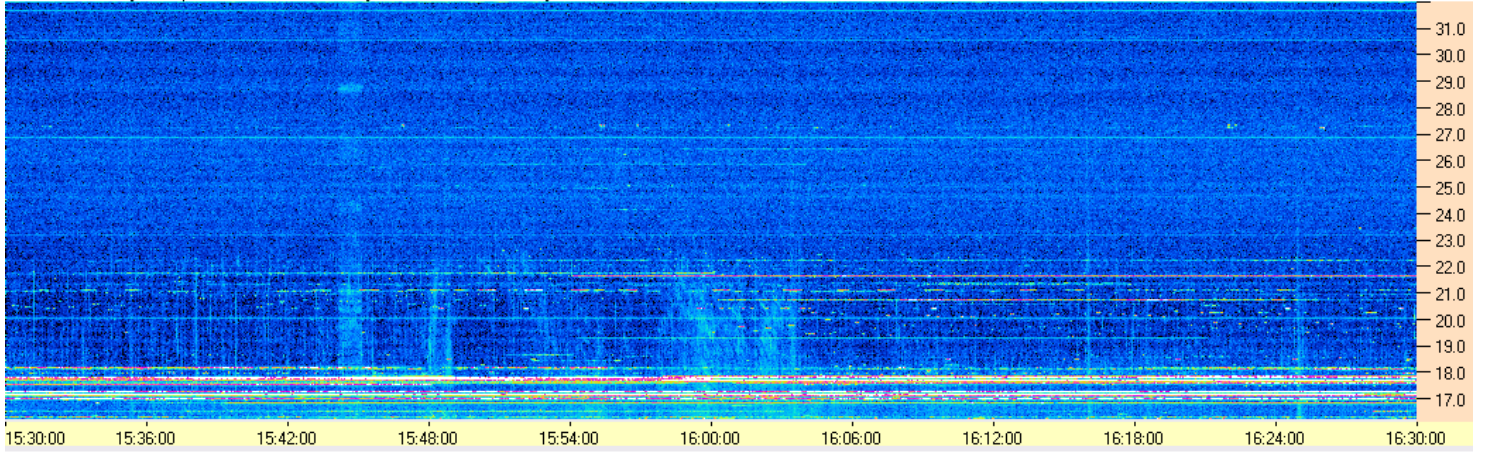


Sky map with array HPBW in green.

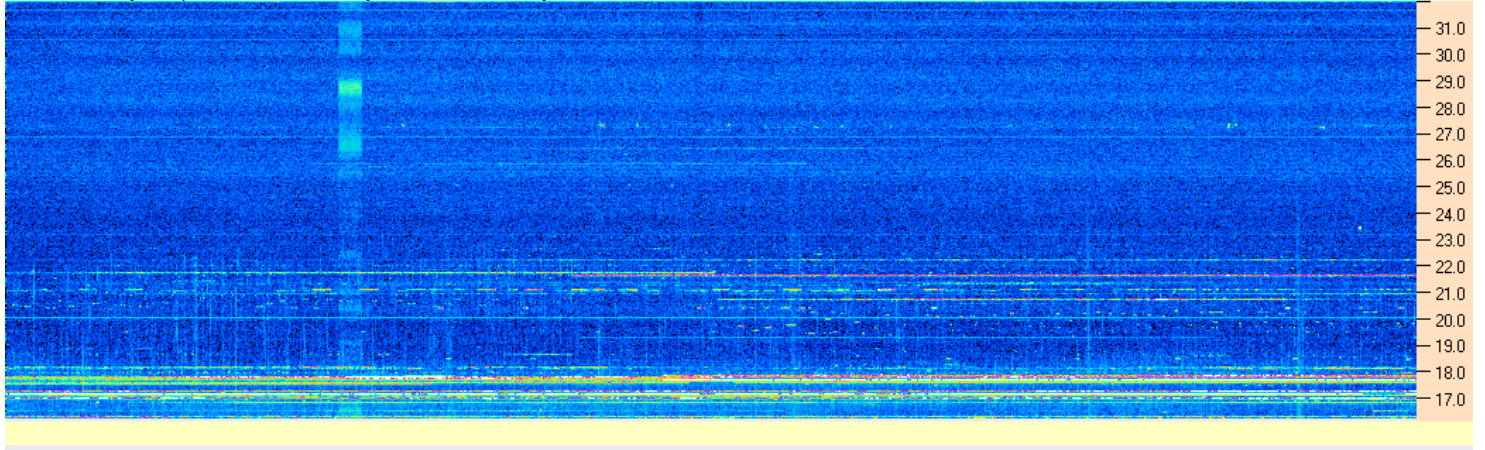


CML-Io phase plane.

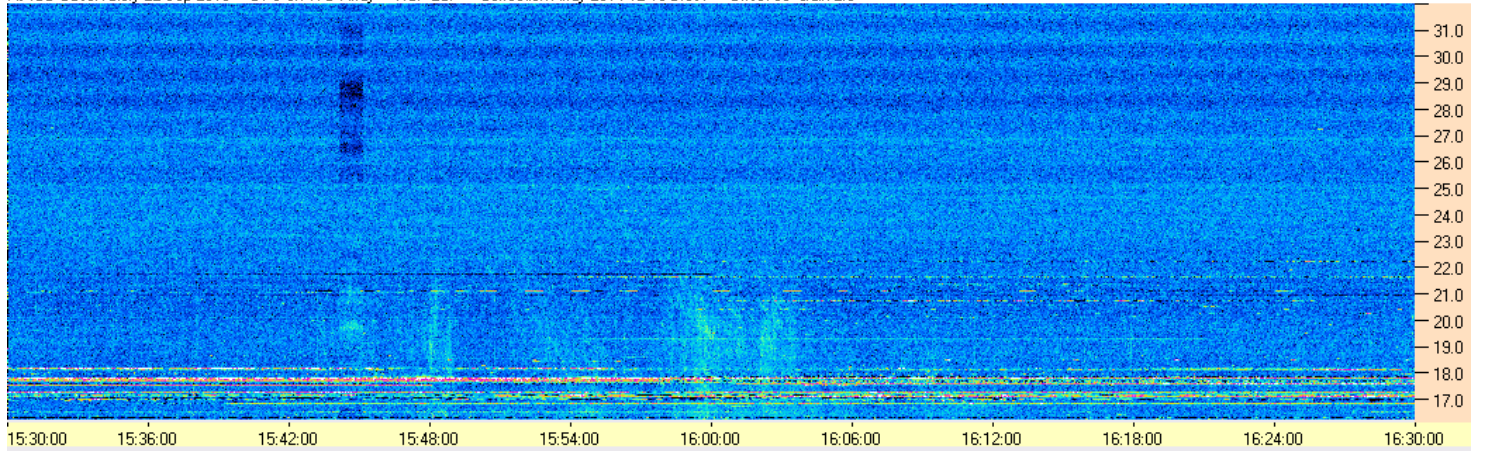
AJ4CO Observatory 22 Sep 2016 - DPS on TFD Array - RCP - Correction Array 2014 12 18 B.csv - Offset 2050 Gain 5.0



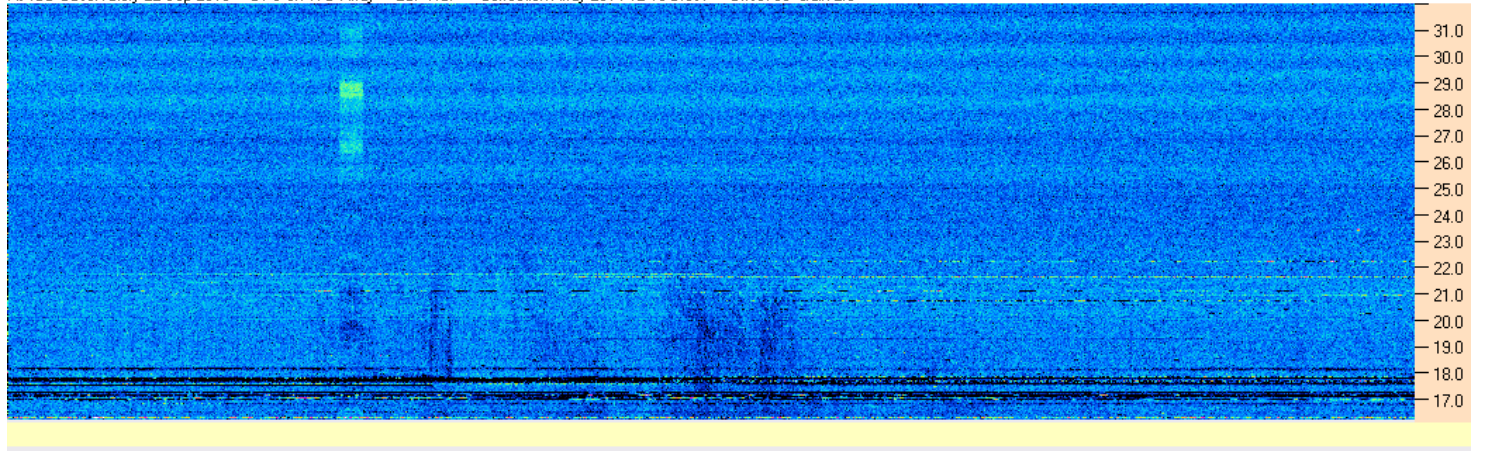
AJ4CO Observatory 22 Sep 2016 - DPS on TFD Array - LCP - Correction Array 2014 12 18 B.csv - Offset 2050 Gain 5.0



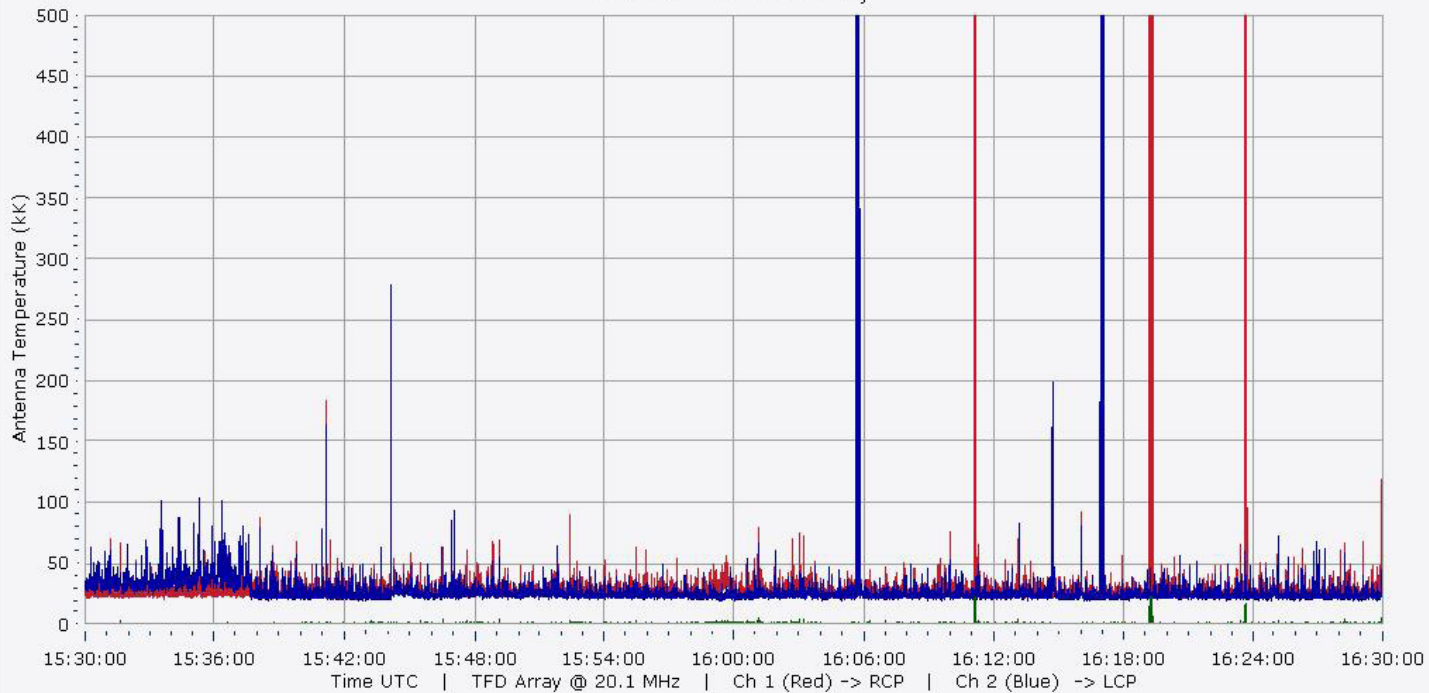
AJ4CO Observatory 22 Sep 2016 - DPS on TFD Array - RCP-LCP - Correction Array 2014 12 18 B.csv - Offset 50 Gain 2.0



AJ4CO Observatory 22 Sep 2016 - DPS on TFD Array - LCP-RCP - Correction Array 2014 12 18 B.csv - Offset 50 Gain 2.0



09/22/2016 AJ4CO Observatory



09/22/2016 AJ4CO Observatory

