

Some Io-A and non-Io-A from Thursday.

Also the obligatory line noise.

It seems from subjective past experience that Io-controlled emission usually has an arc shape (vertex early or late), while non-Io-controlled emission usually has a linear frequency drift; i.e., that a non-Io “arc” is not curved (at least not above 16 MHz), but rather a tilted triangle. Therefore, the two emission events seen in the spectrograms are logged as separate events.

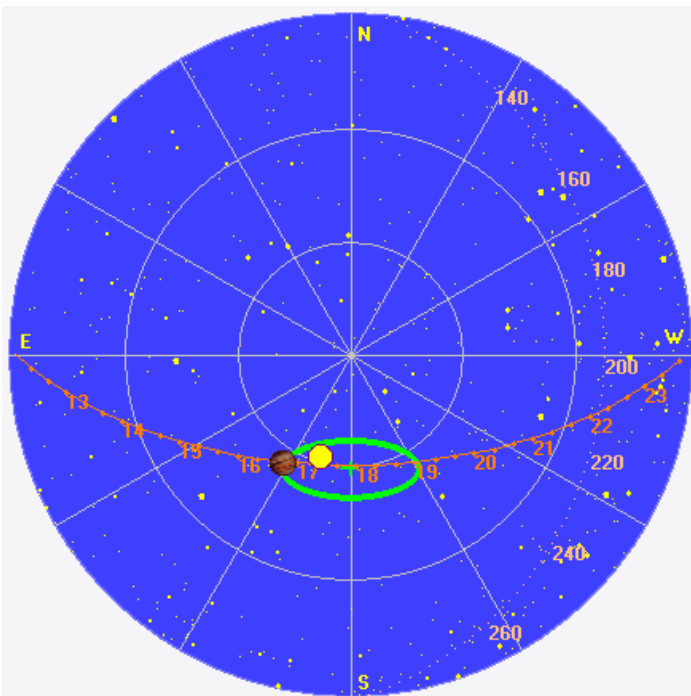
RCP dominant L bursting 1552–1612 UTC from 16 to 25 MHz, vertex late arc. (Io-A)

RCP dominant L bursting 1709–1745 UTC from 16 to 22 MHz, negative frequency drift emission envelope. (non-Io-A)

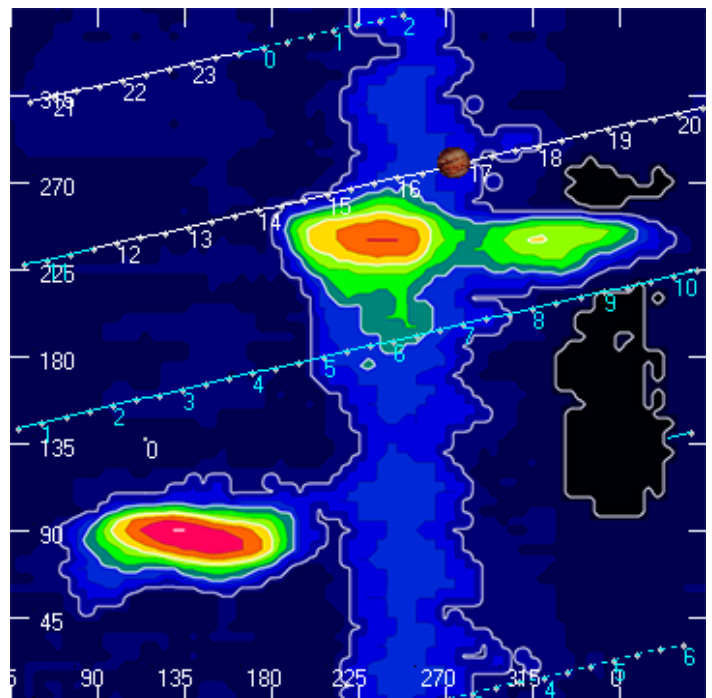
Jupiter was  $-31^\circ$  to  $-3^\circ$  off axis.

Jupiter was trailing the Sun by  $8^\circ$ .

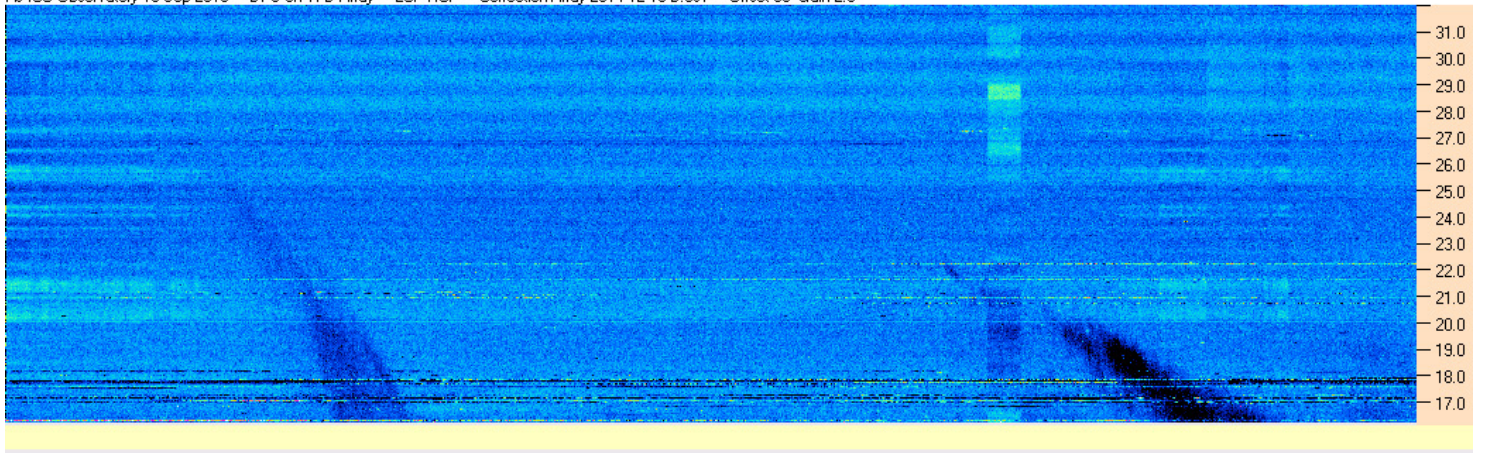
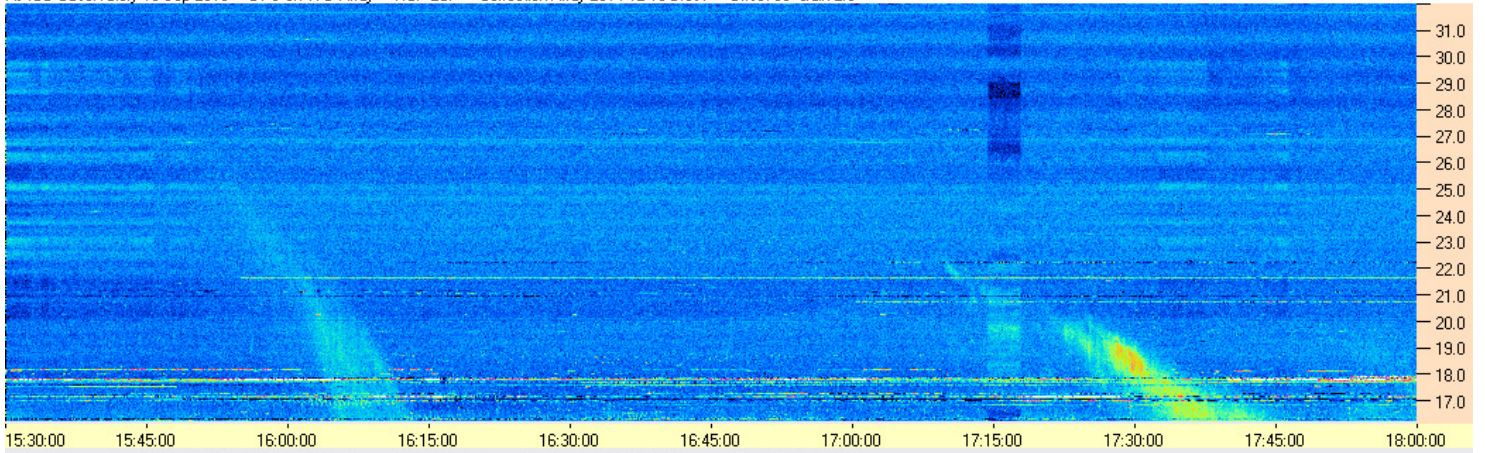
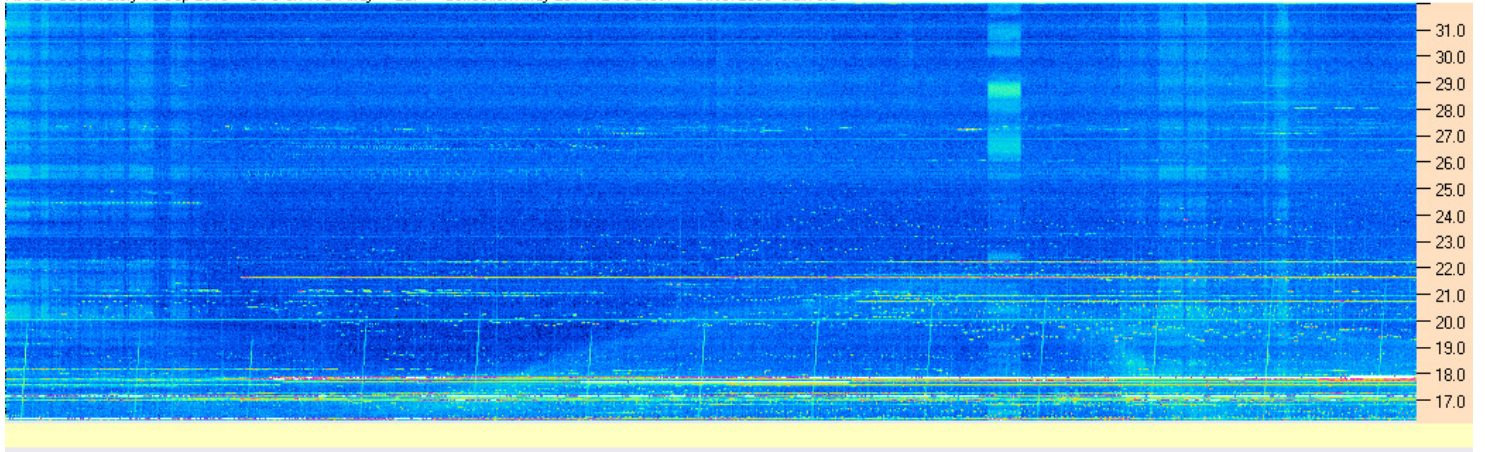
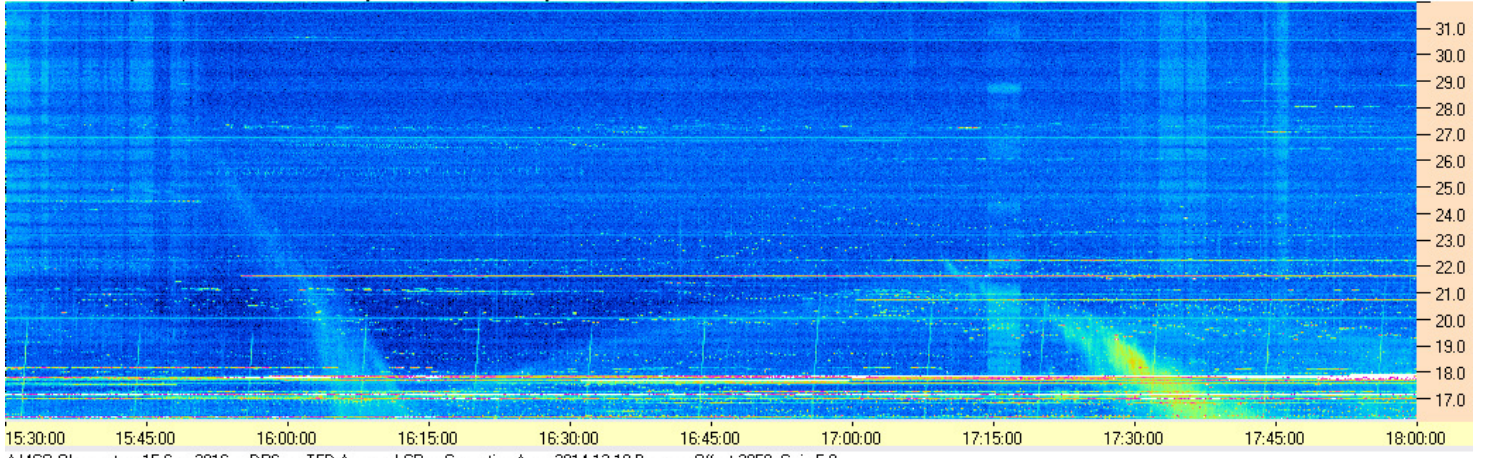
Jupiter’s location at midpoint of observed emission (1648 UTC)



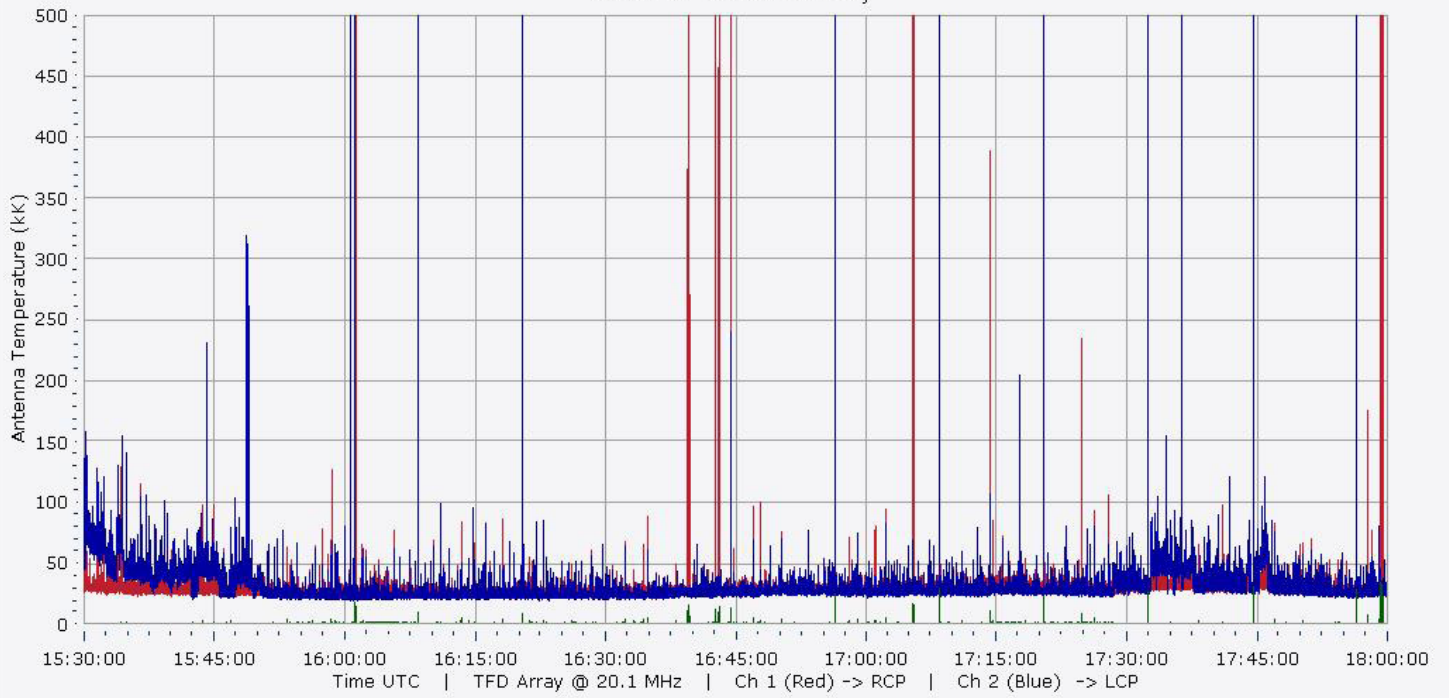
Sky map with array HPBW in green.



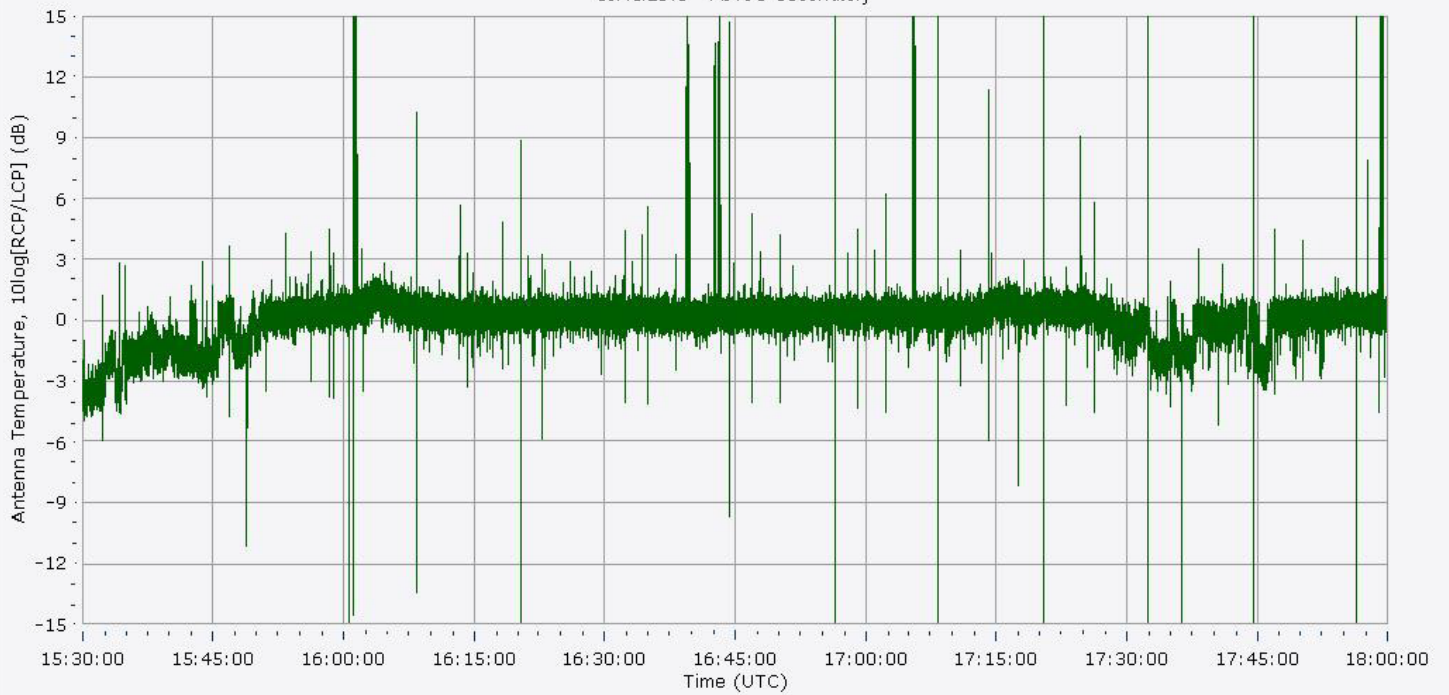
CML-Io phase plane.



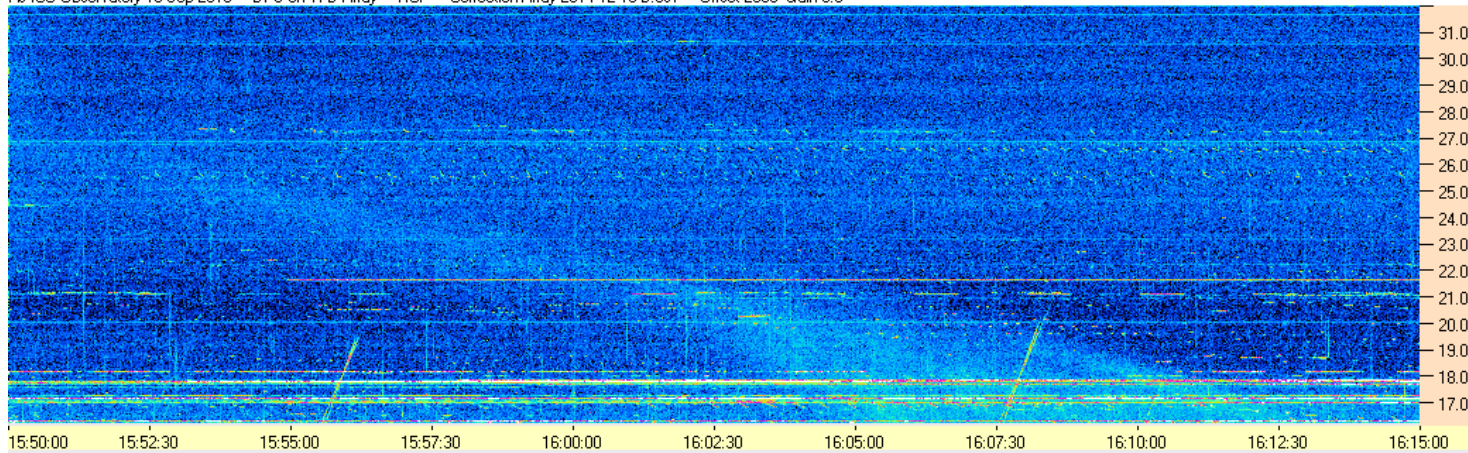
09/15/2016 AJ4CO Observatory



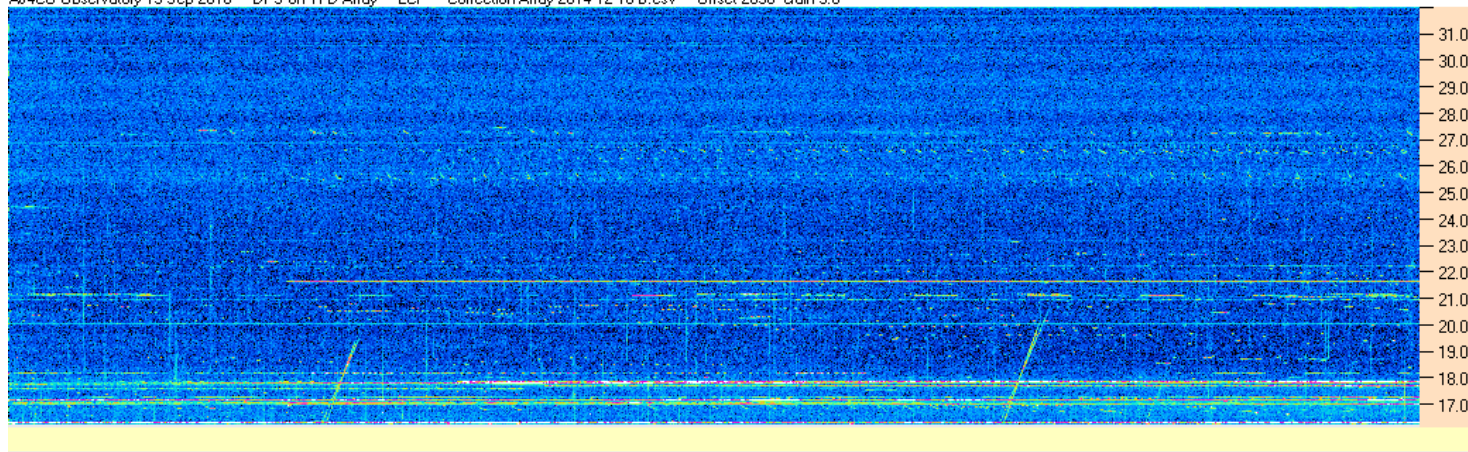
09/15/2016 AJ4CO Observatory



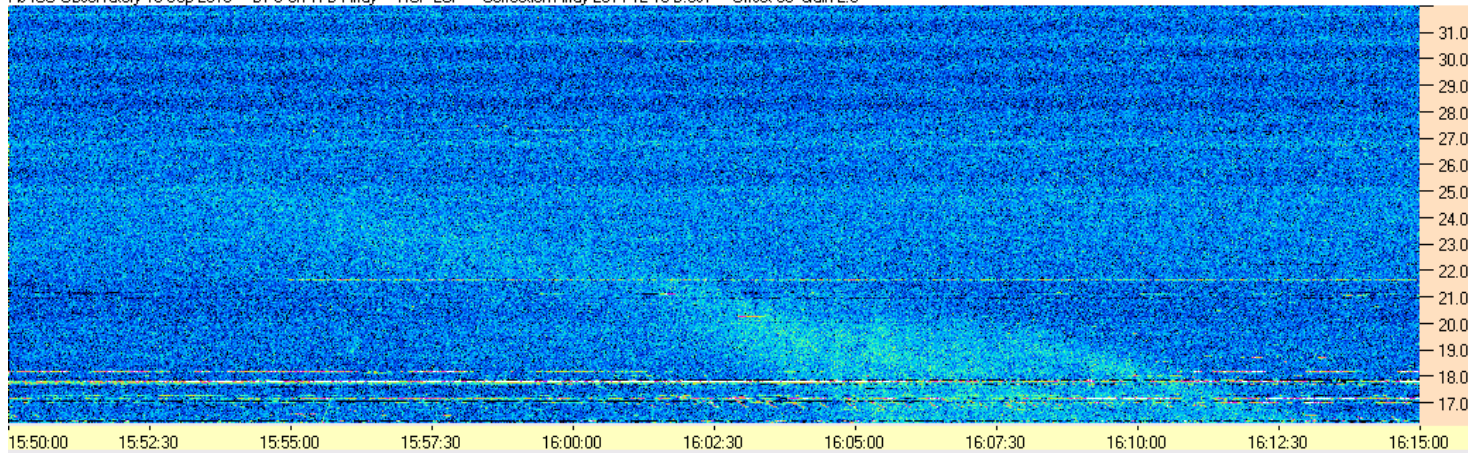
AJ4CO Observatory 15 Sep 2016 - DPS on TFD Array - RCP - Correction Array 2014 12 18 B.csv - Offset 2050 Gain 5.0



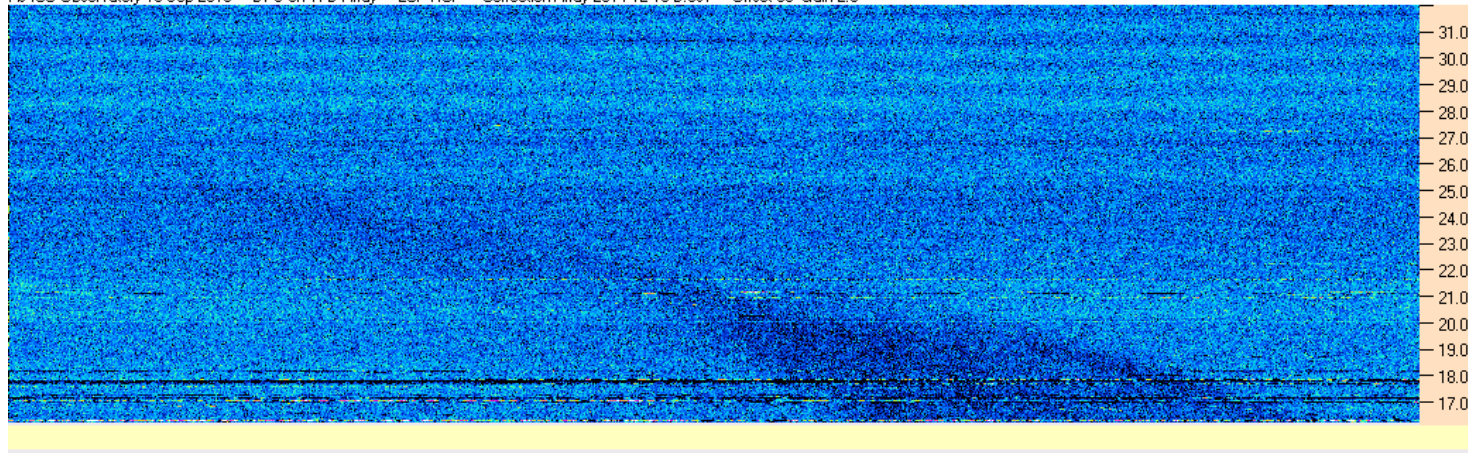
AJ4CO Observatory 15 Sep 2016 - DPS on TFD Array - LCP - Correction Array 2014 12 18 B.csv - Offset 2050 Gain 5.0

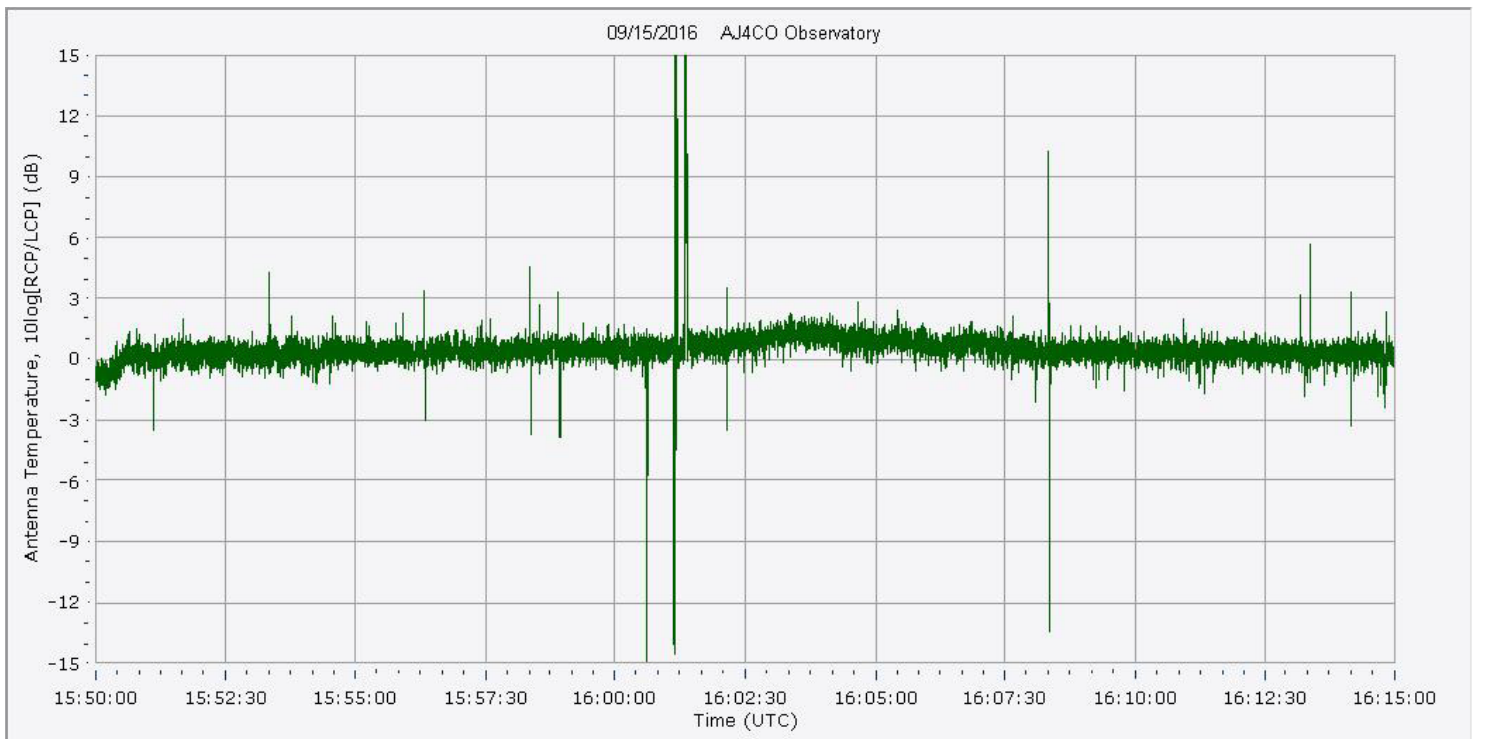
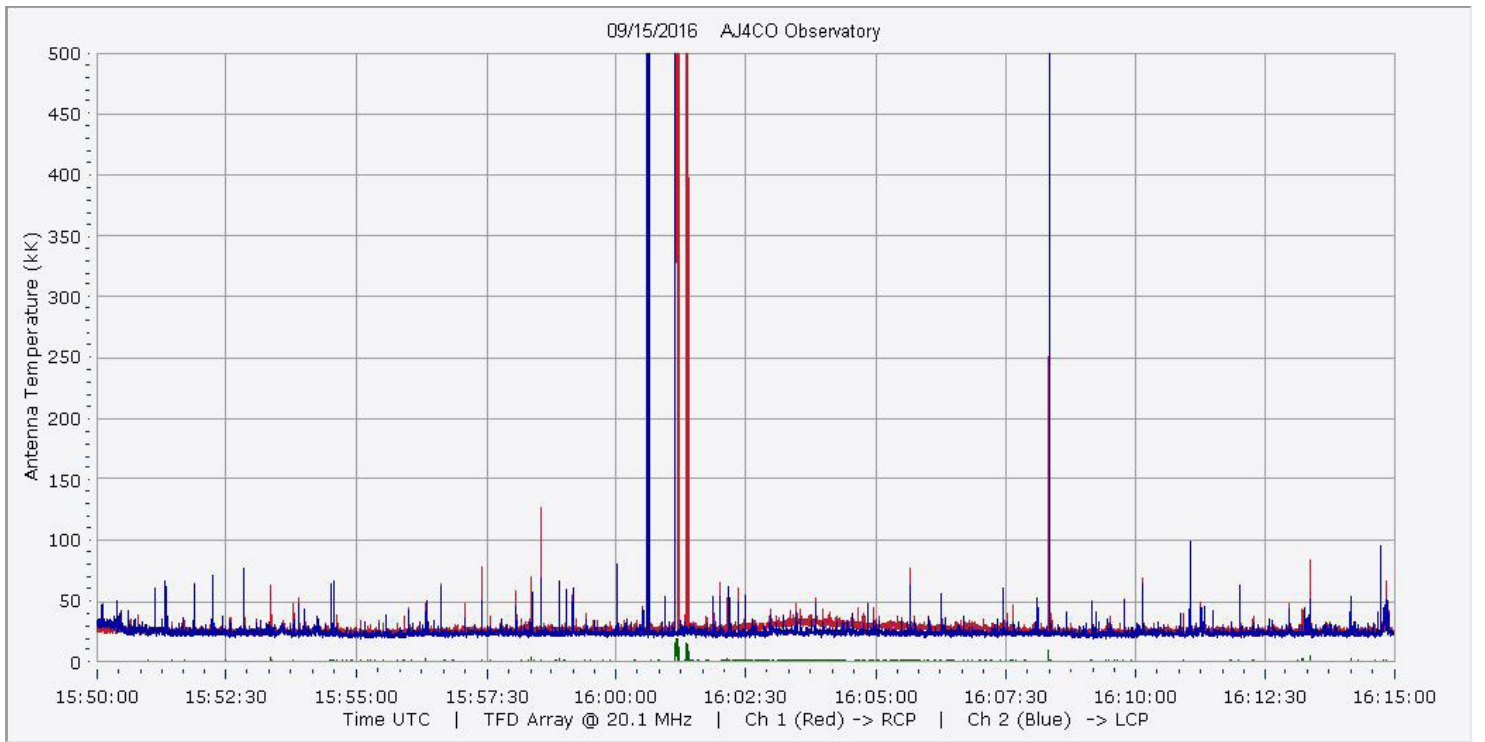


AJ4CO Observatory 15 Sep 2016 - DPS on TFD Array - RCP-LCP - Correction Array 2014 12 18 B.csv - Offset 50 Gain 2.0

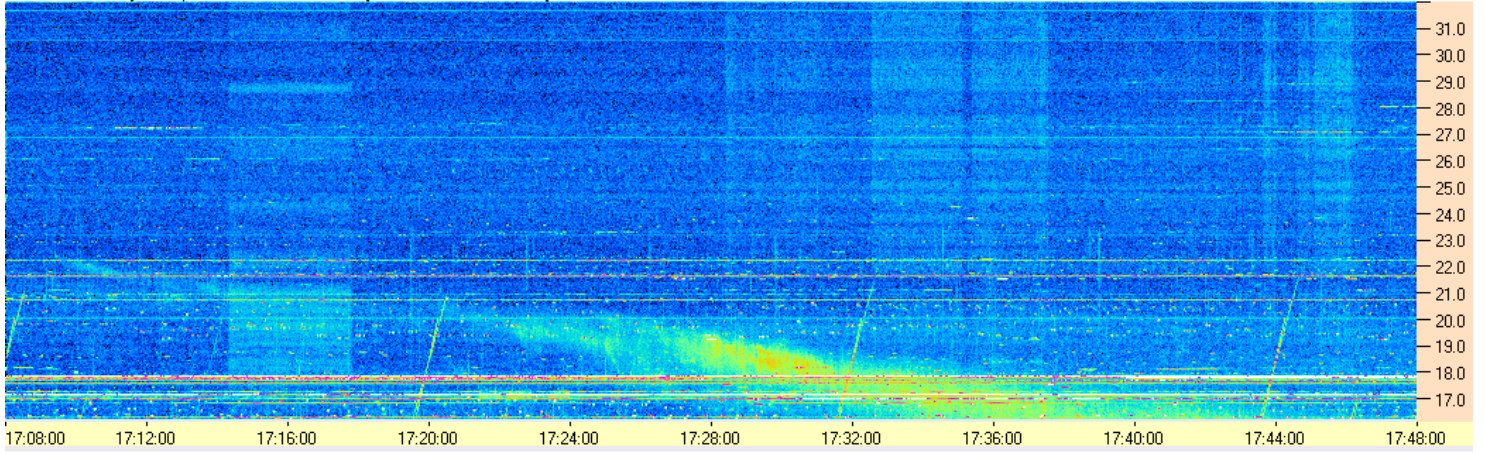


AJ4CO Observatory 15 Sep 2016 - DPS on TFD Array - LCP-RCP - Correction Array 2014 12 18 B.csv - Offset 50 Gain 2.0

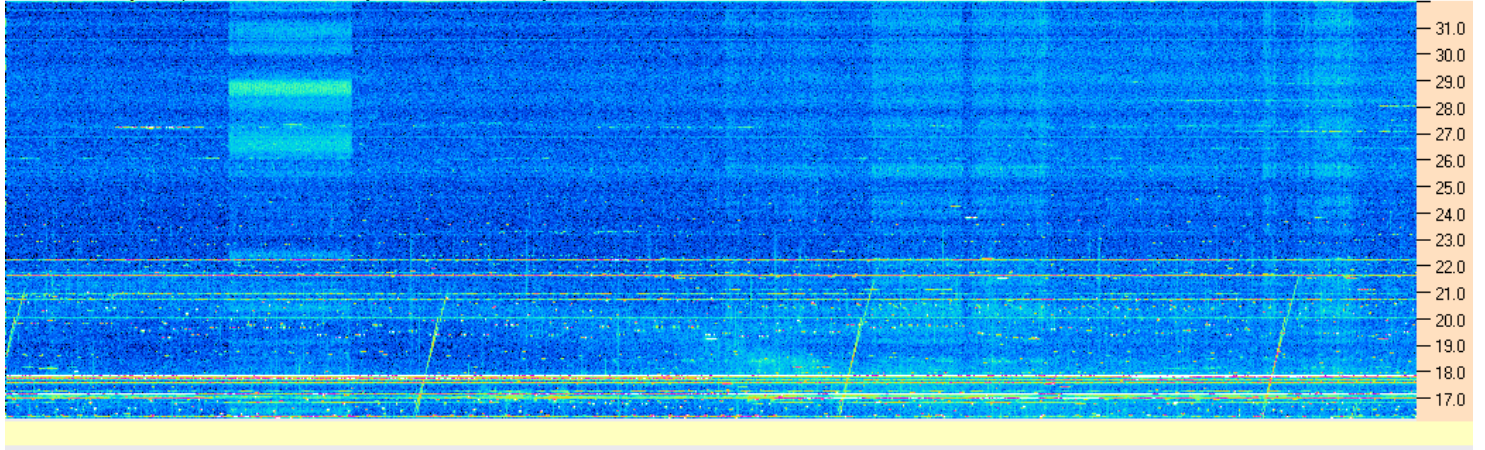




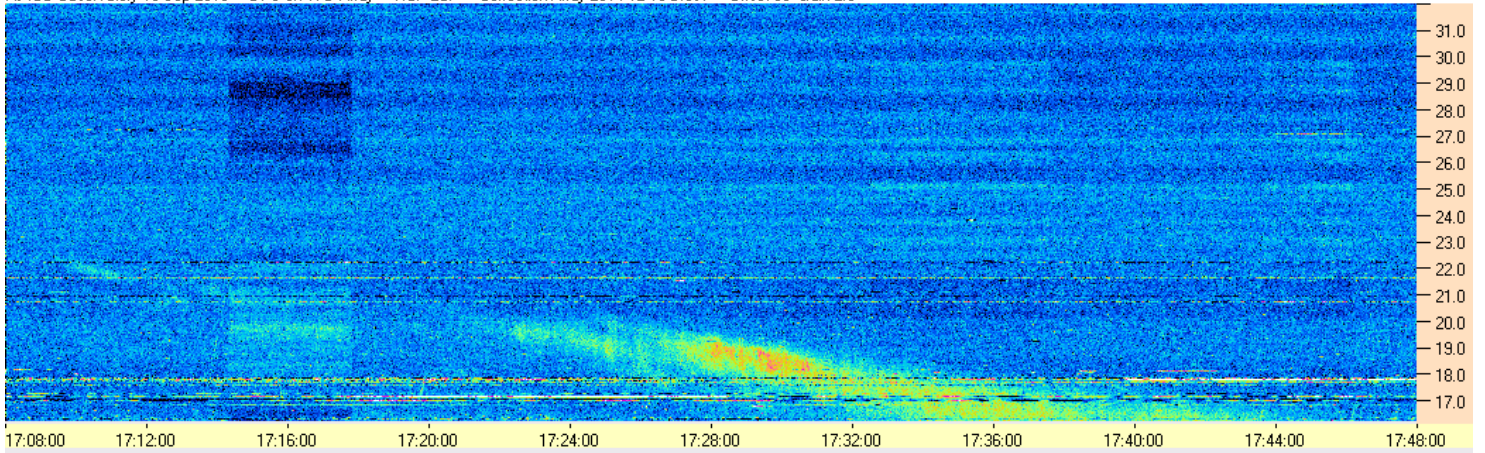
AJ4CO Observatory 15 Sep 2016 - DPS on TFD Array - RCP - Correction Array 2014 12 18 B.csv - Offset 2050 Gain 5.0



AJ4CO Observatory 15 Sep 2016 - DPS on TFD Array - LCP - Correction Array 2014 12 18 B.csv - Offset 2050 Gain 5.0



AJ4CO Observatory 15 Sep 2016 - DPS on TFD Array - RCP-LCP - Correction Array 2014 12 18 B.csv - Offset 50 Gain 2.0



AJ4CO Observatory 15 Sep 2016 - DPS on TFD Array - LCP-RCP - Correction Array 2014 12 18 B.csv - Offset 50 Gain 2.0

