

Yet another passel of non-Io-controlled emission.

RCP dominant L bursting 1622–1638 UTC from 16 to 21 MHz, positive frequency drift emission envelope. (non-Io-B)

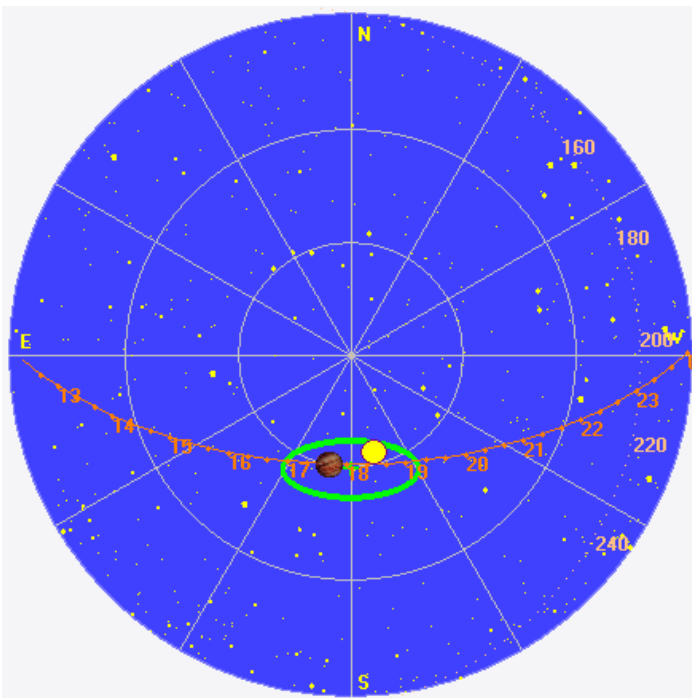
LCP dominant L bursting 1659–1723 UTC from 16 to 21 MHz, negative frequency drift emission envelope. (non-Io-D)

RCP dominant L bursting 1728–1904 UTC from 16 to 25 MHz, positive frequency drift emission envelopes. (non-Io-A)

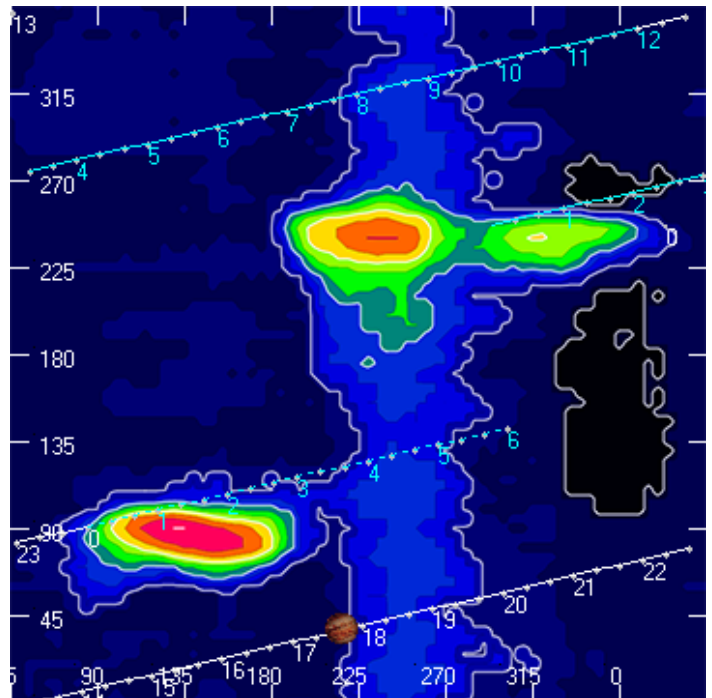
Jupiter was -26° to $+15^\circ$ off axis.

Jupiter was trailing the Sun by 10° .

Jupiter's location at midpoint of observed emission (1743 UTC)

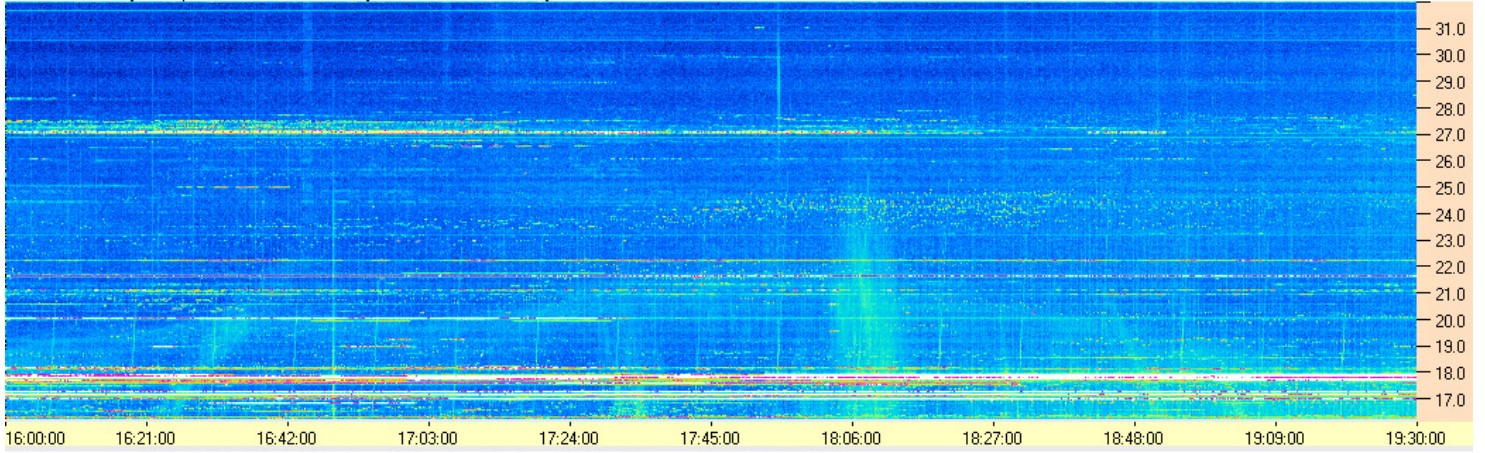


Sky map with array HPBW in green.

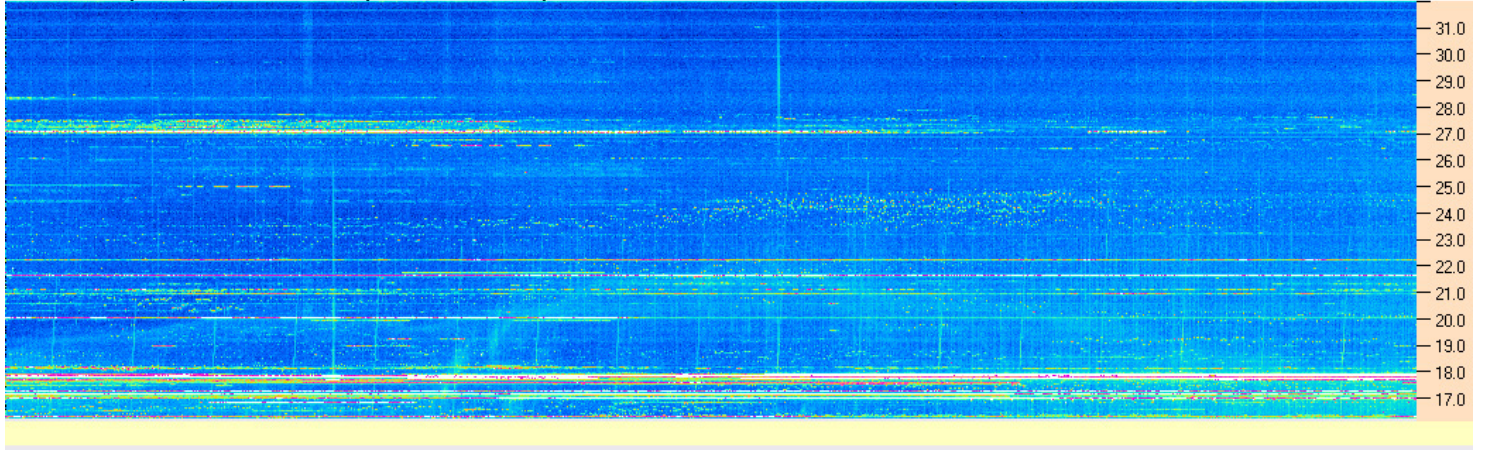


CML-Io phase plane.

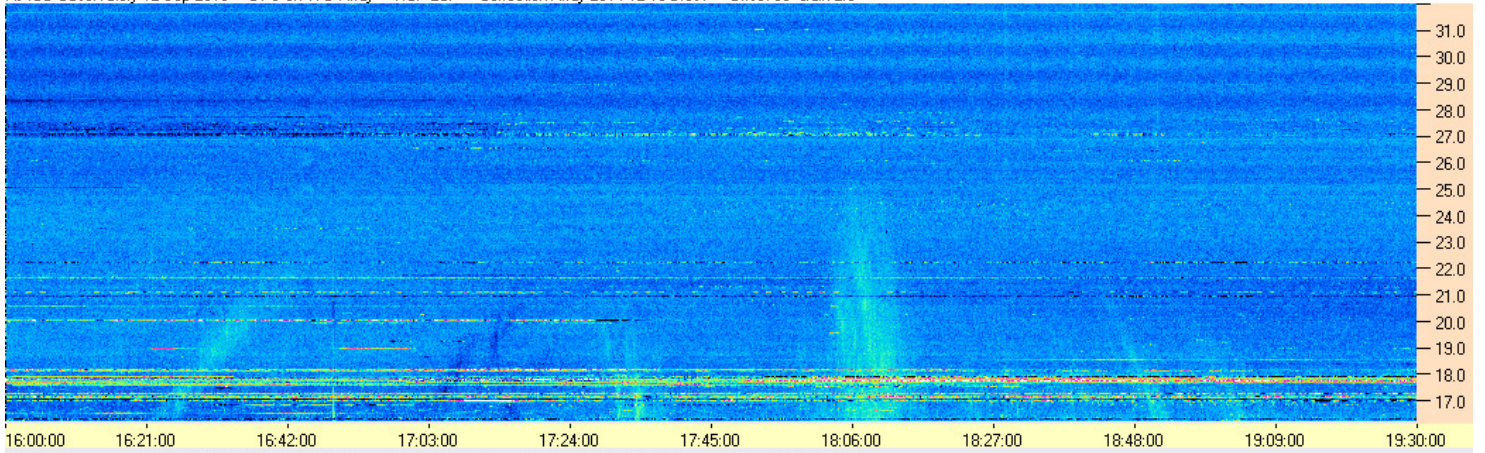
AJ4CO Observatory 12 Sep 2016 - DPS on TFD Array - RCP - Correction Array 2014 12 18 B.csv - Offset 2050 Gain 5.0



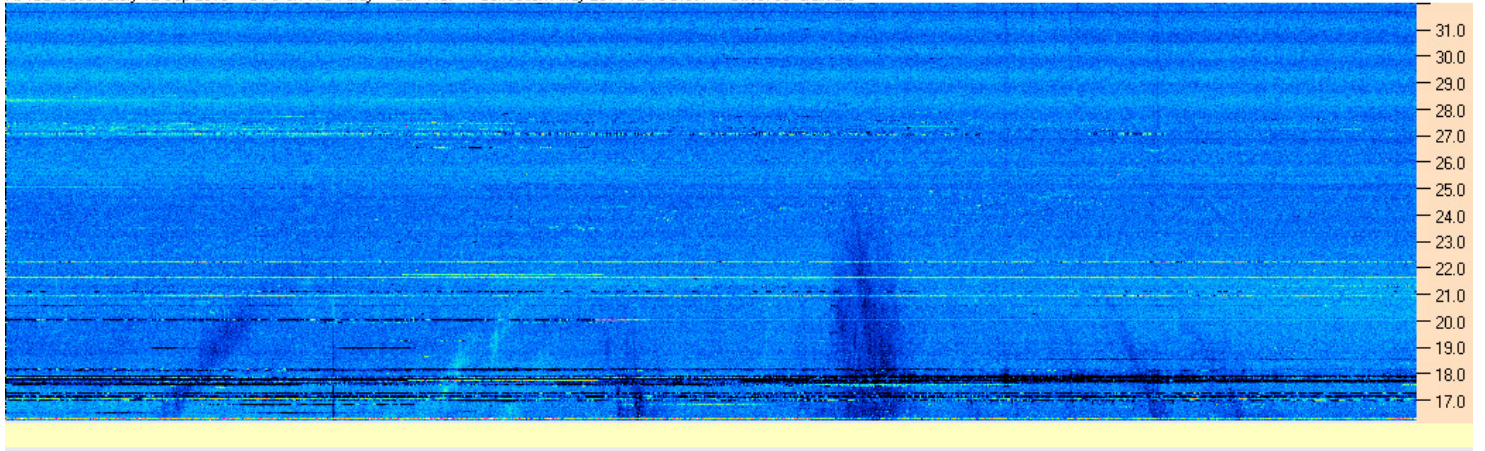
AJ4CO Observatory 12 Sep 2016 - DPS on TFD Array - LCP - Correction Array 2014 12 18 B.csv - Offset 2050 Gain 5.0

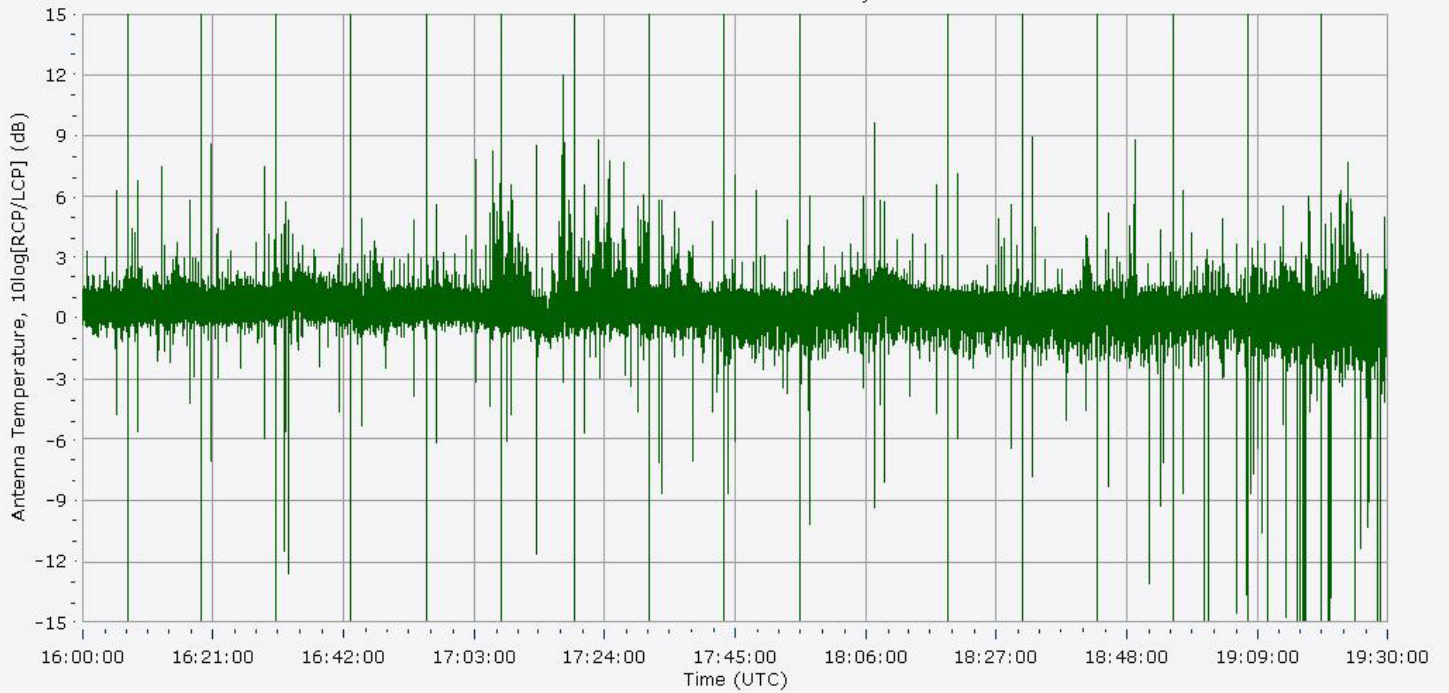
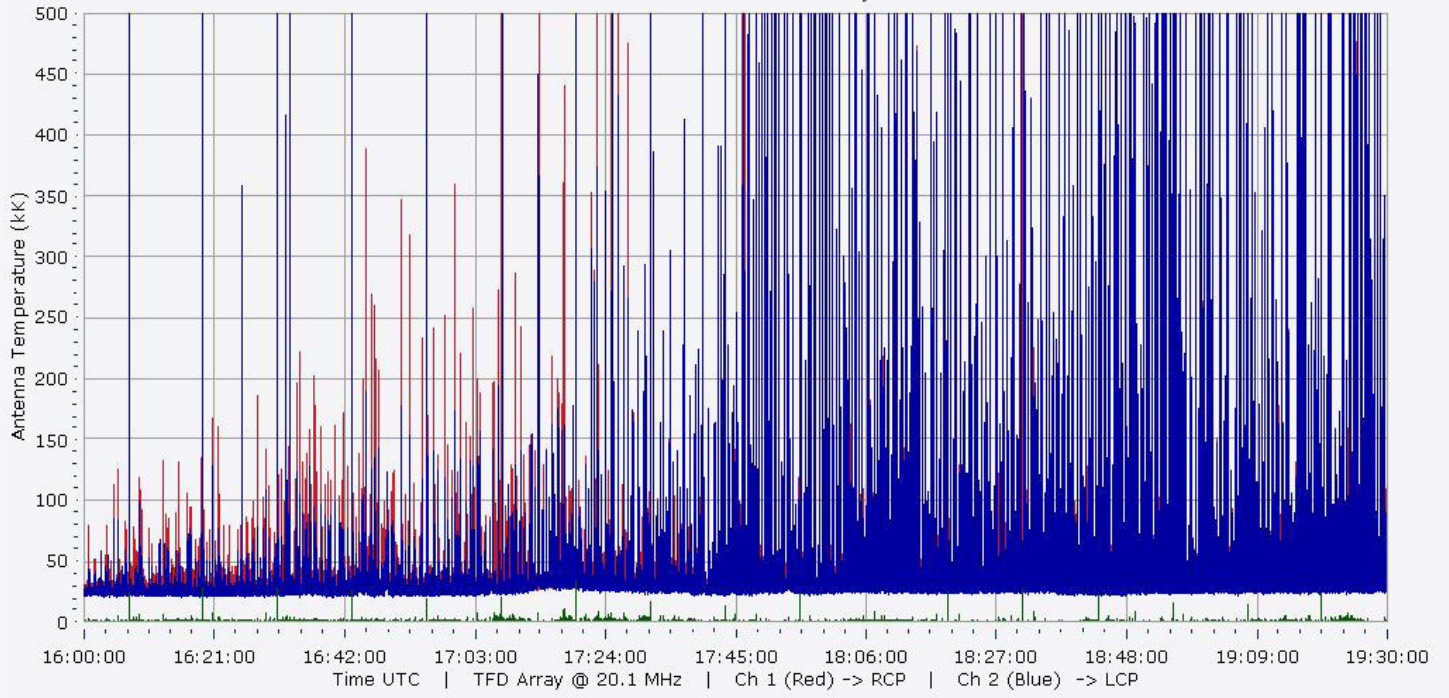


AJ4CO Observatory 12 Sep 2016 - DPS on TFD Array - RCP-LCP - Correction Array 2014 12 18 B.csv - Offset 50 Gain 2.0

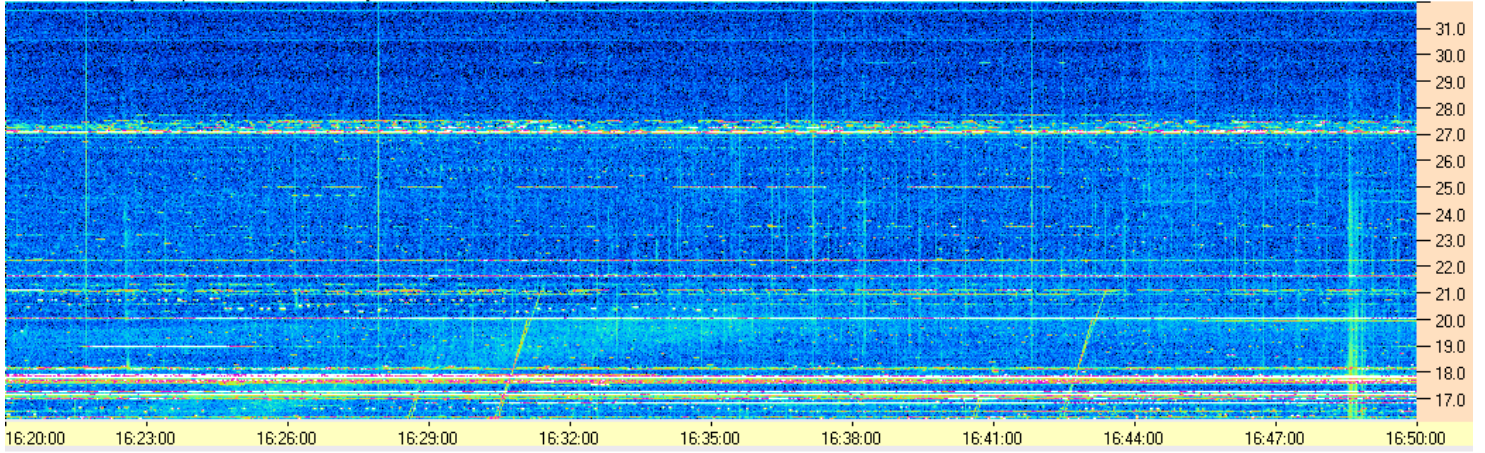


AJ4CO Observatory 12 Sep 2016 - DPS on TFD Array - LCP-RCP - Correction Array 2014 12 18 B.csv - Offset 50 Gain 2.0

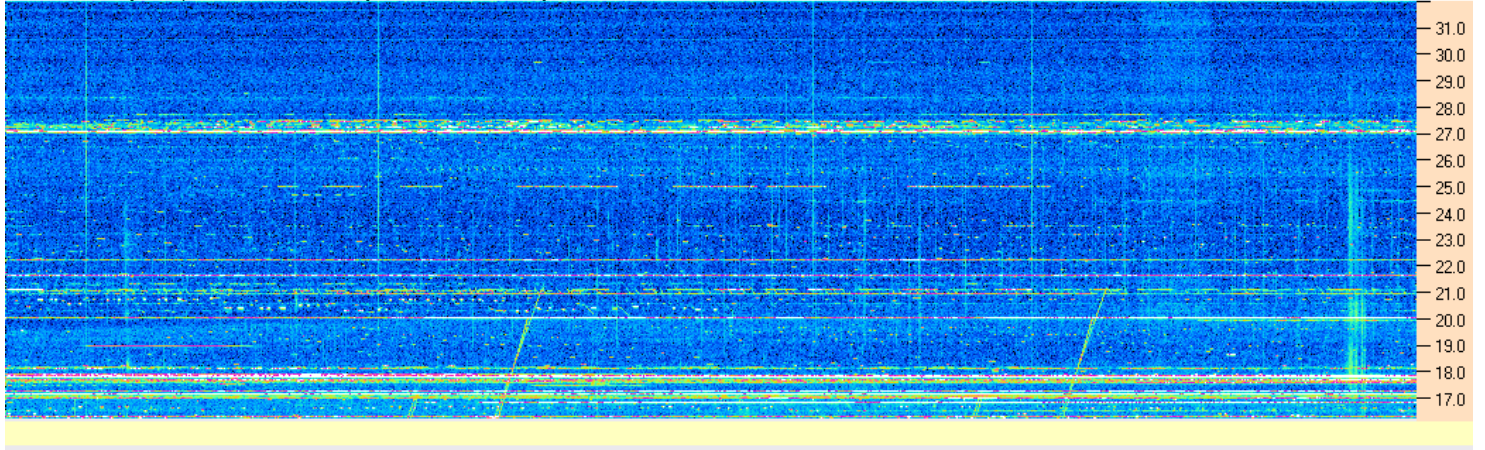




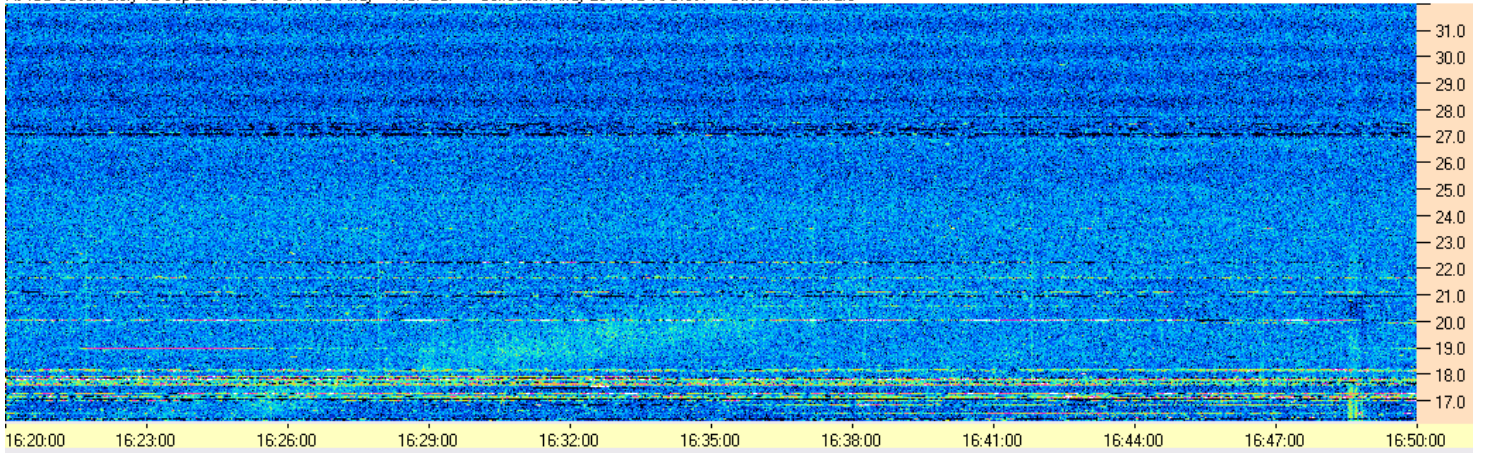
AJ4CO Observatory 12 Sep 2016 · DPS on TFD Array · RCP · Correction Array 2014 12 18 B.csv · Offset 2050 Gain 5.0



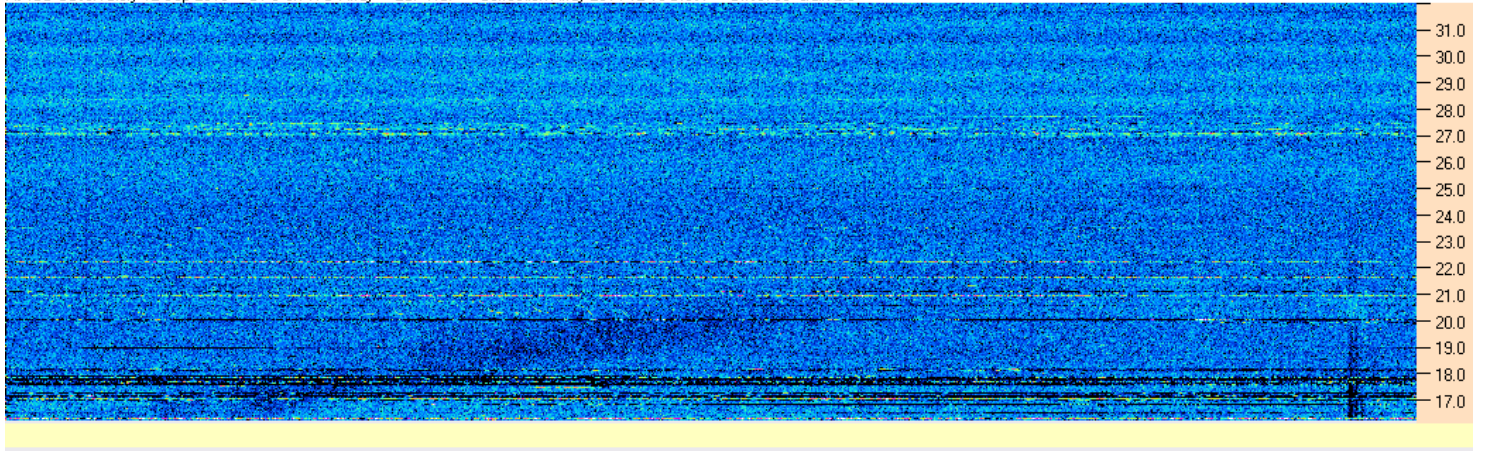
AJ4CO Observatory 12 Sep 2016 · DPS on TFD Array · LCP · Correction Array 2014 12 18 B.csv · Offset 2050 Gain 5.0

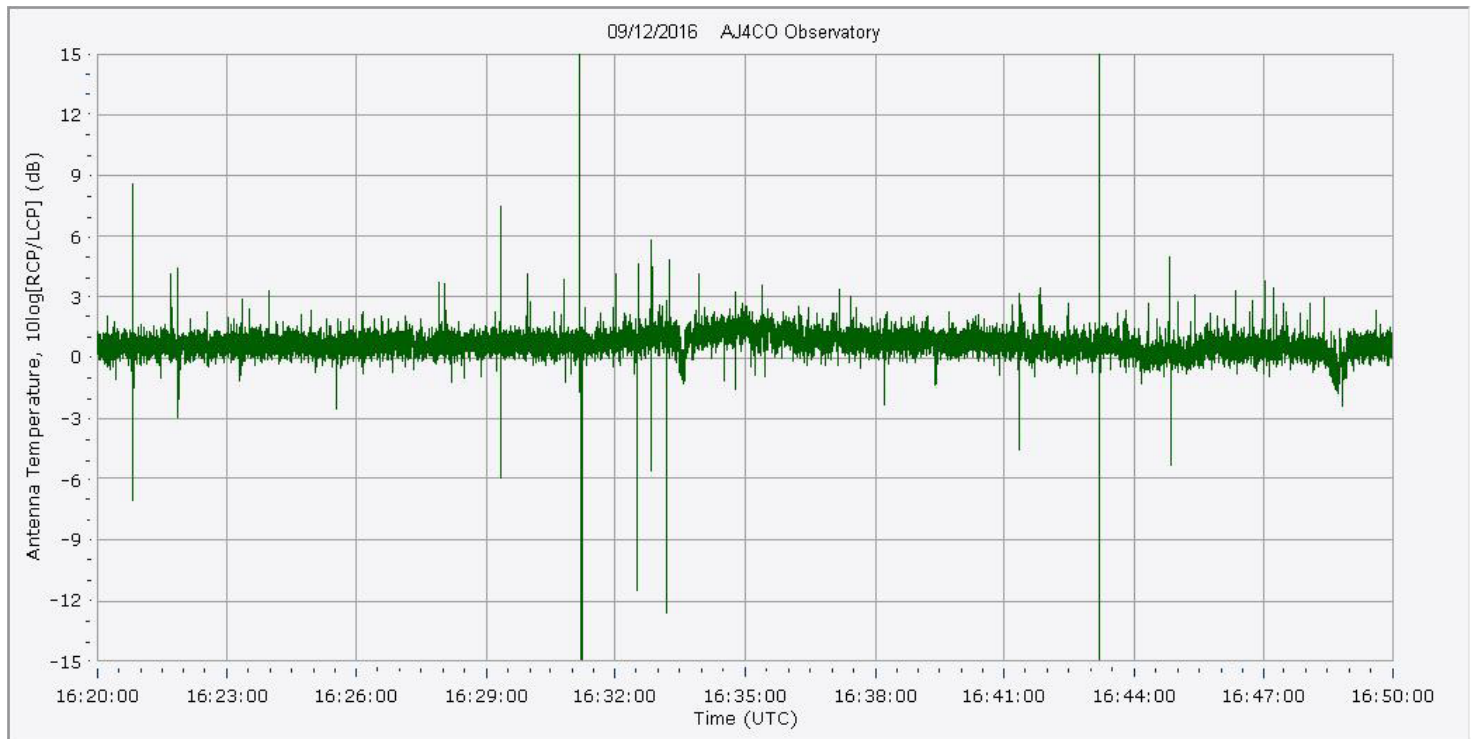
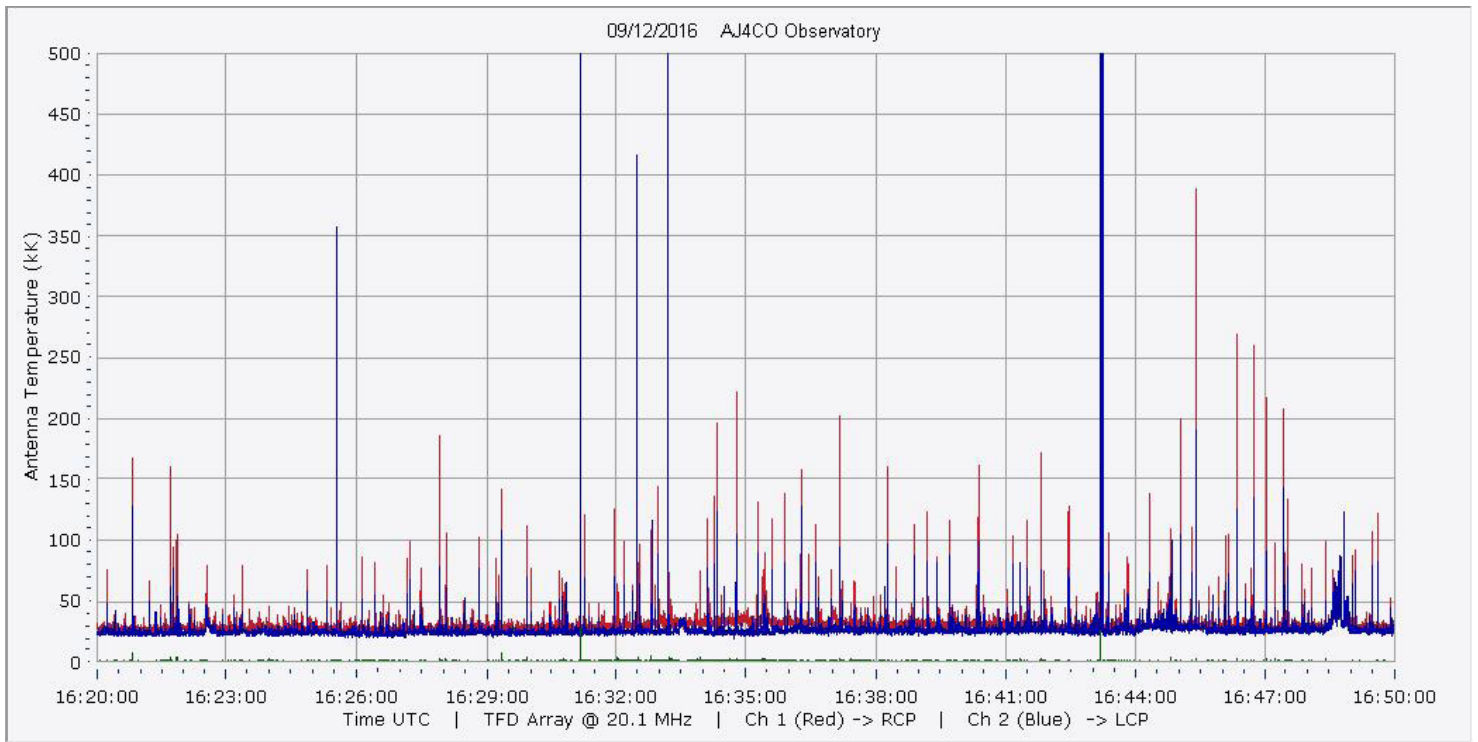


AJ4CO Observatory 12 Sep 2016 · DPS on TFD Array · RCP-LCP · Correction Array 2014 12 18 B.csv · Offset 50 Gain 2.0

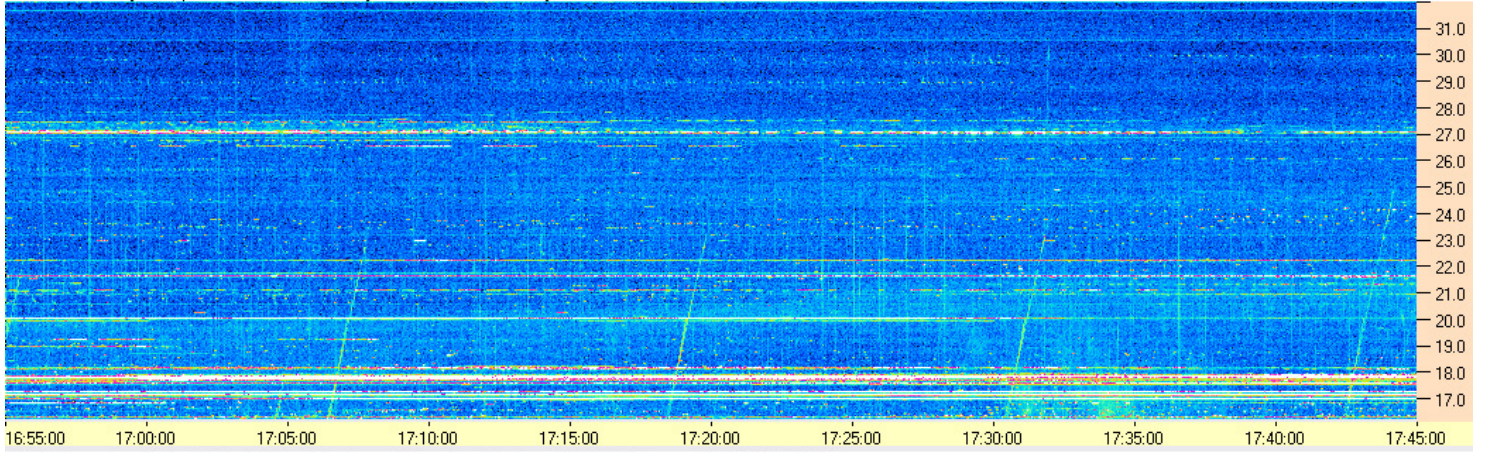


AJ4CO Observatory 12 Sep 2016 · DPS on TFD Array · LCP-RCP · Correction Array 2014 12 18 B.csv · Offset 50 Gain 2.0

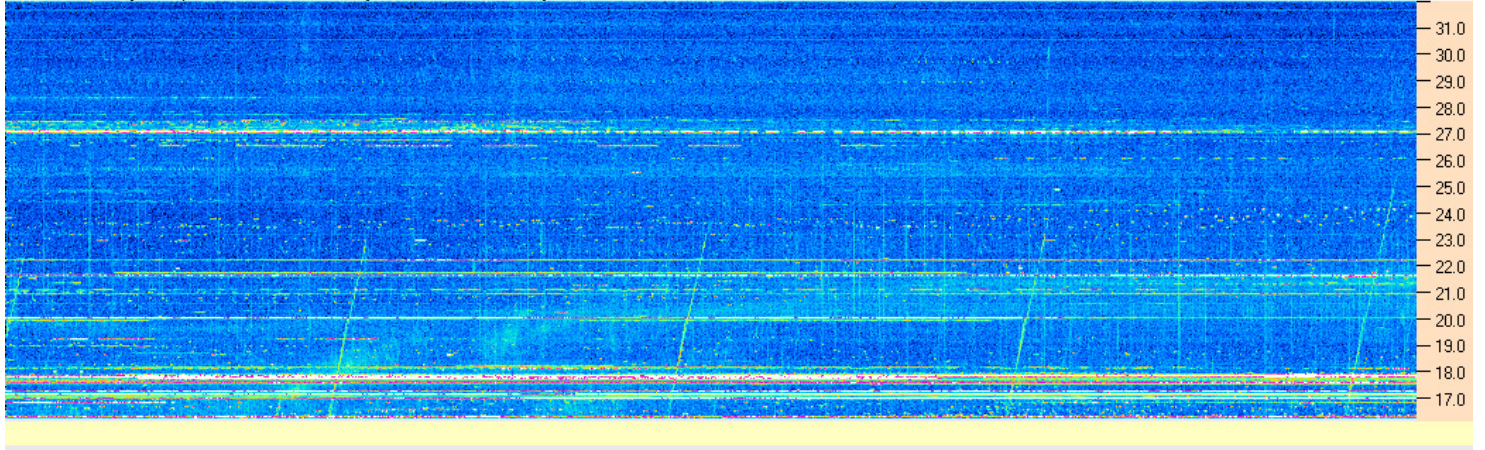




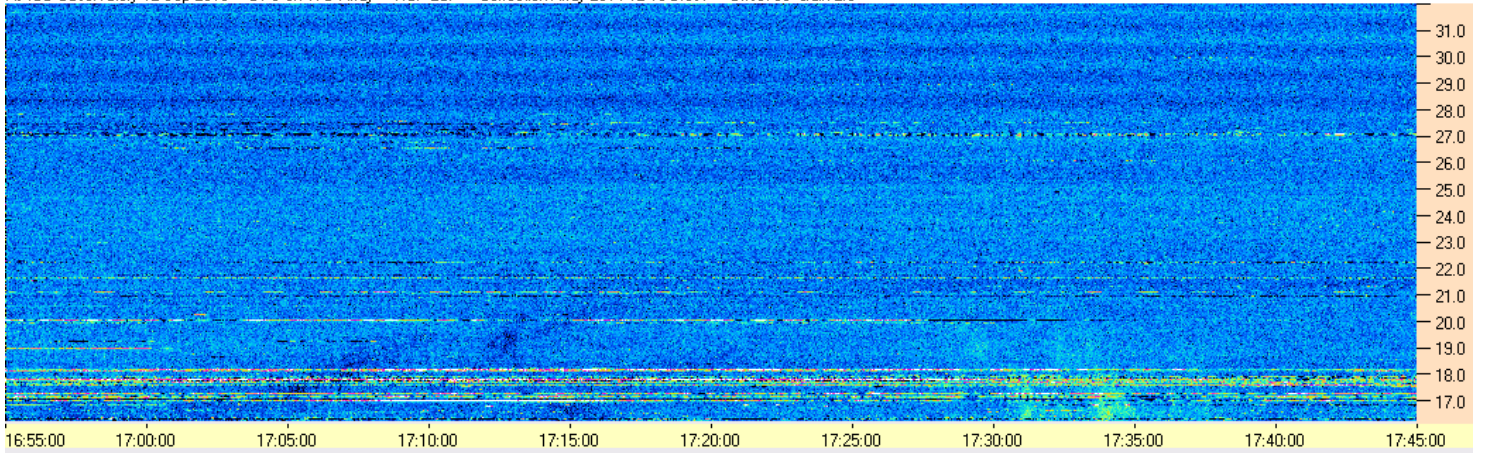
AJ4CO Observatory 12 Sep 2016 - DPS on TFD Array - RCP - Correction Array 2014 12 18 B.csv - Offset 2050 Gain 5.0



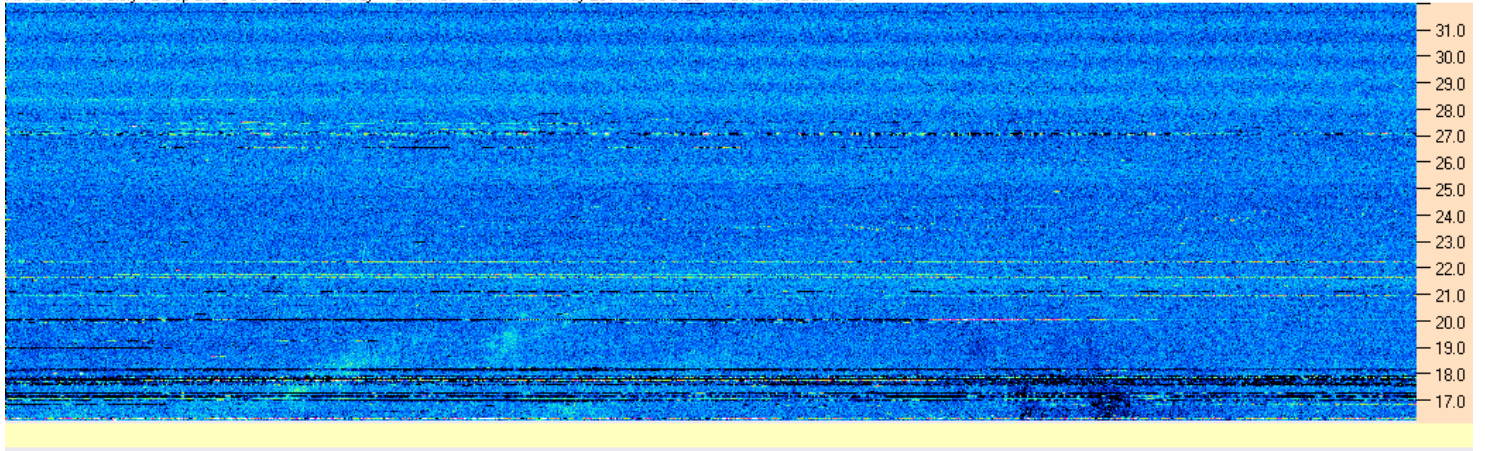
AJ4CO Observatory 12 Sep 2016 - DPS on TFD Array - LCP - Correction Array 2014 12 18 B.csv - Offset 2050 Gain 5.0

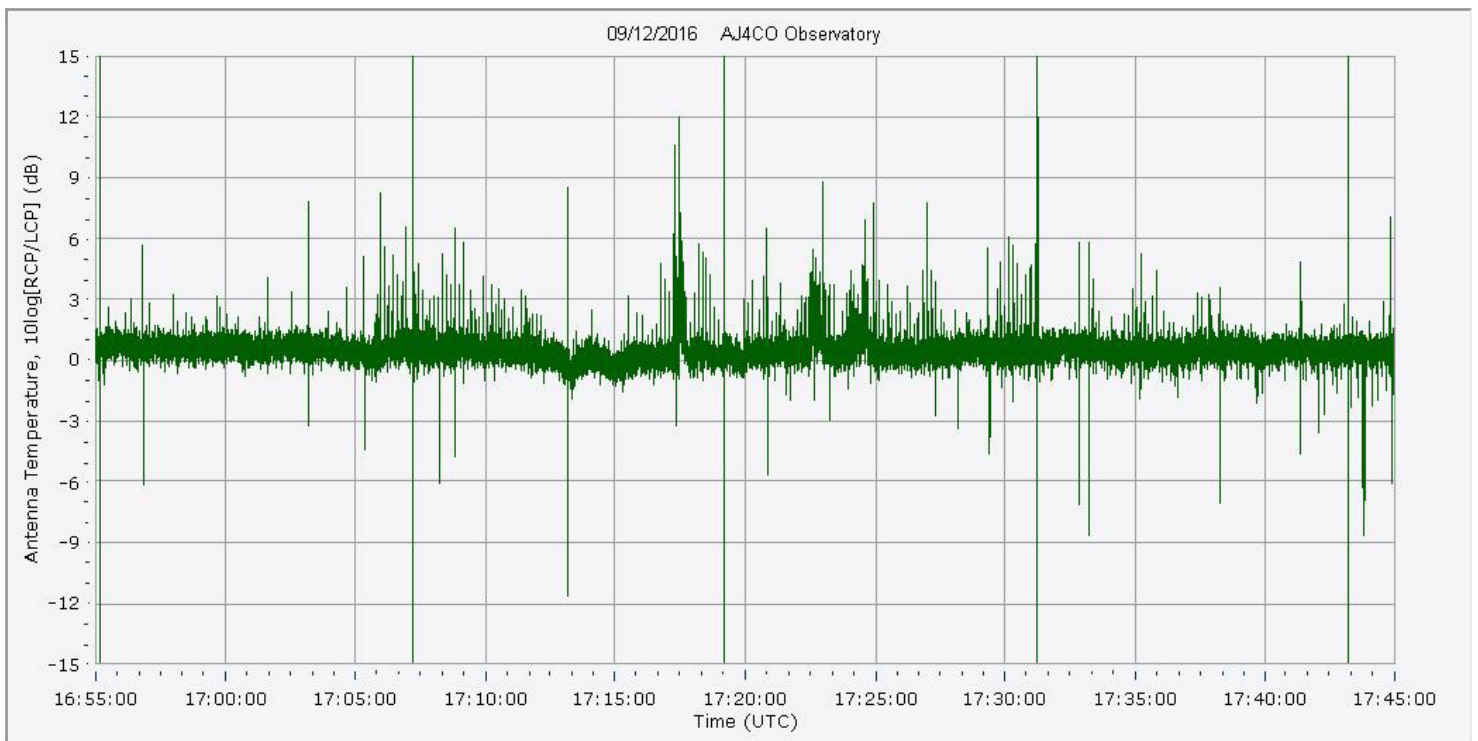
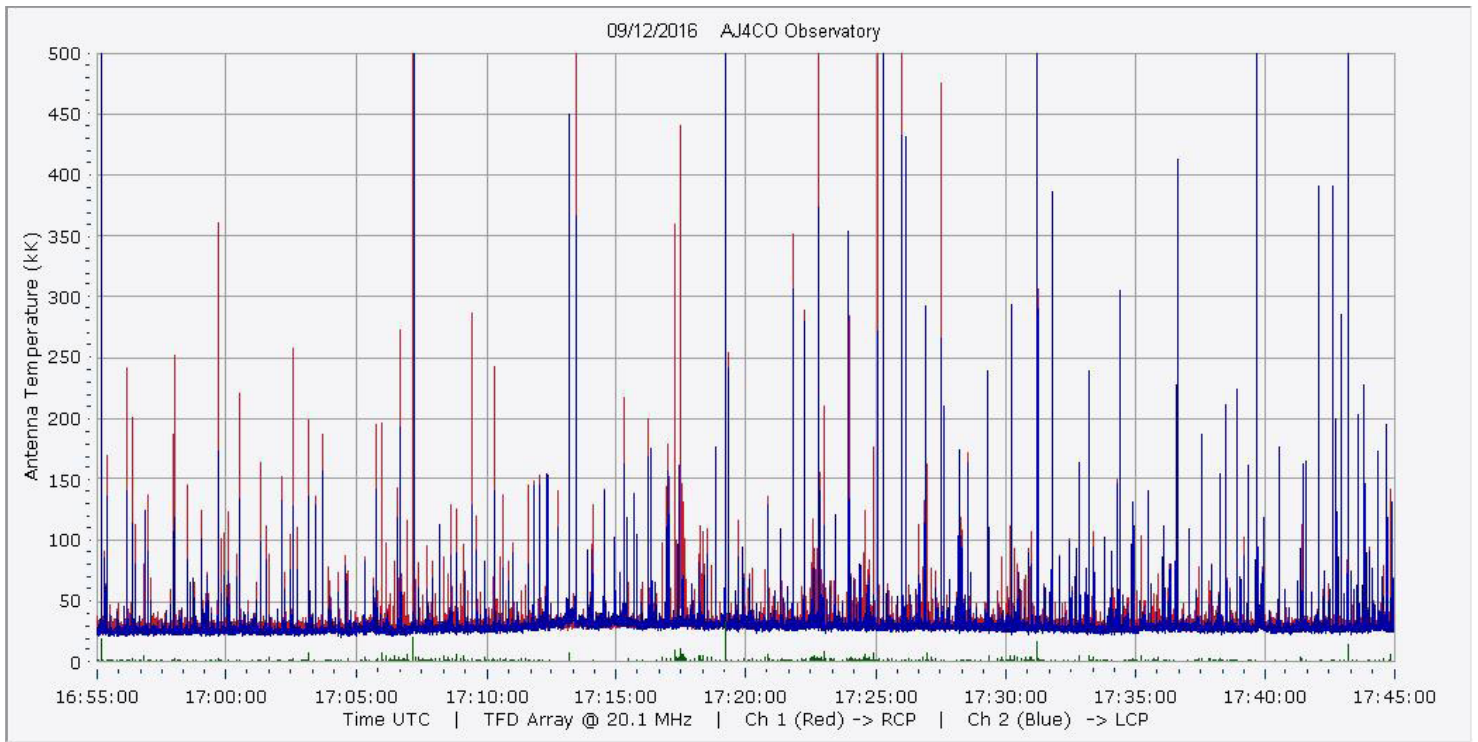


AJ4CO Observatory 12 Sep 2016 - DPS on TFD Array - RCP-LCP - Correction Array 2014 12 18 B.csv - Offset 50 Gain 2.0

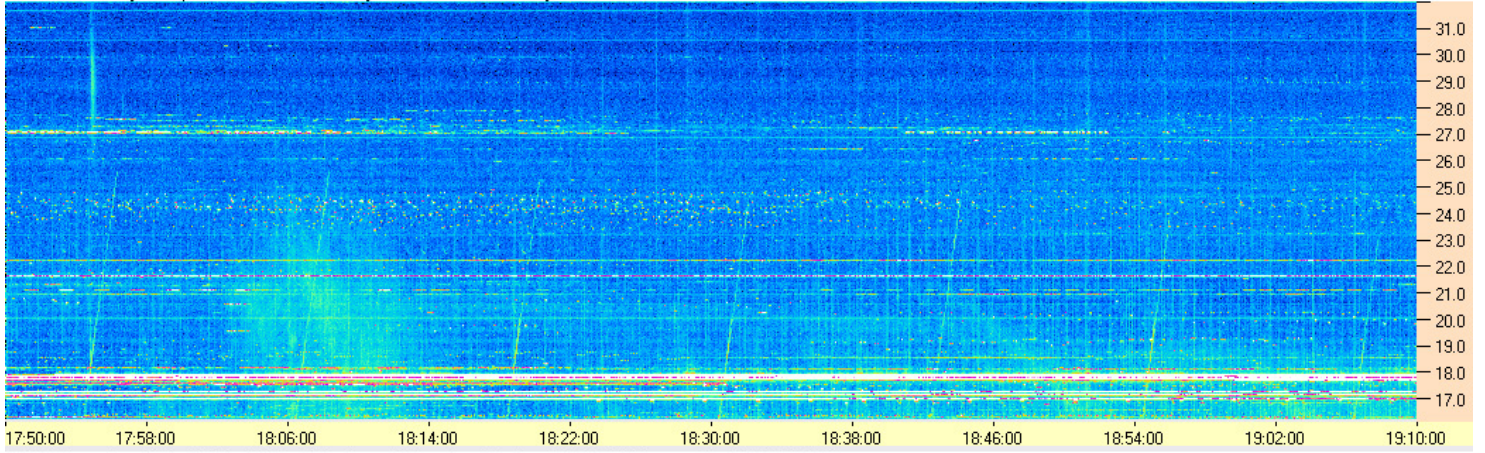


AJ4CO Observatory 12 Sep 2016 - DPS on TFD Array - LCP-RCP - Correction Array 2014 12 18 B.csv - Offset 50 Gain 2.0

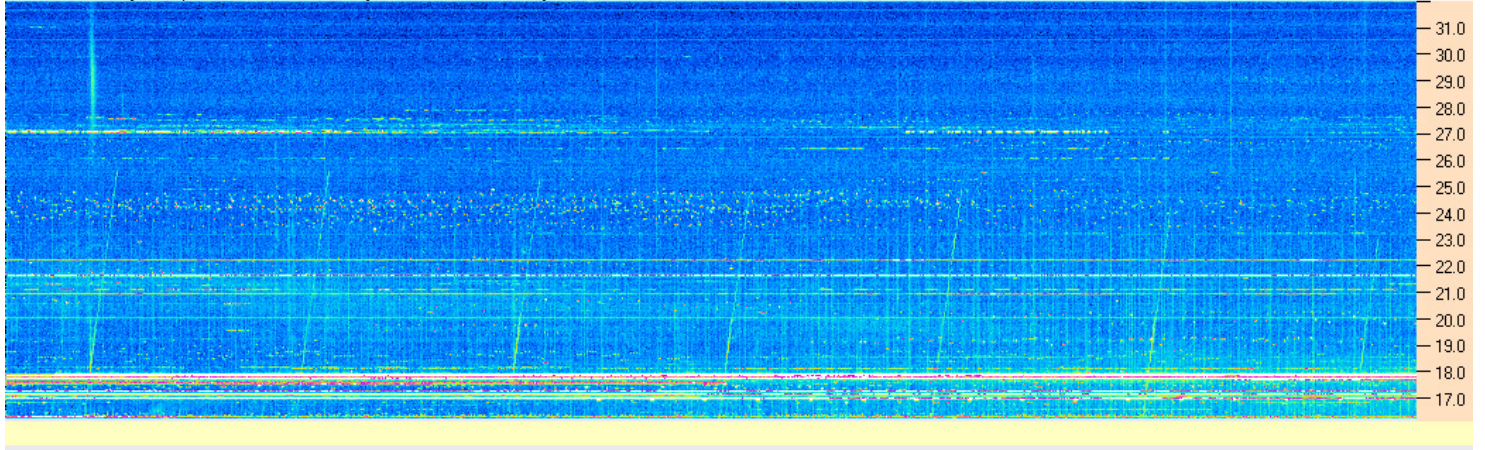




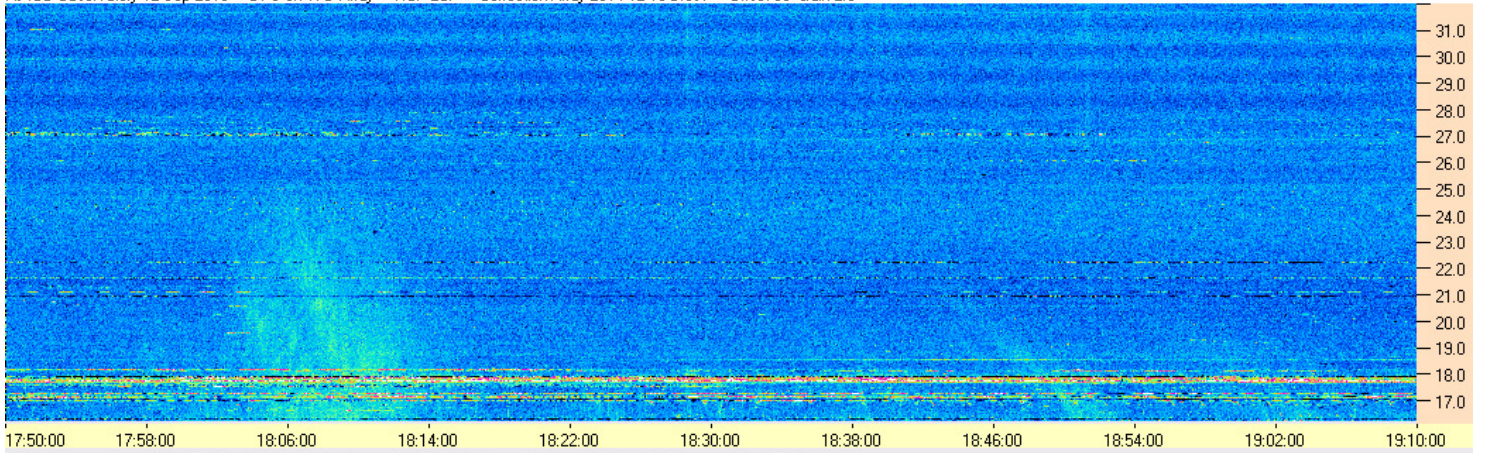
AJ4CO Observatory 12 Sep 2016 - DPS on TFD Array - RCP - Correction Array 2014 12 18 B.csv - Offset 2050 Gain 5.0



AJ4CO Observatory 12 Sep 2016 - DPS on TFD Array - LCP - Correction Array 2014 12 18 B.csv - Offset 2050 Gain 5.0



AJ4CO Observatory 12 Sep 2016 - DPS on TFD Array - RCP-LCP - Correction Array 2014 12 18 B.csv - Offset 50 Gain 2.0



AJ4CO Observatory 12 Sep 2016 - DPS on TFD Array - LCP-RCP - Correction Array 2014 12 18 B.csv - Offset 50 Gain 2.0

