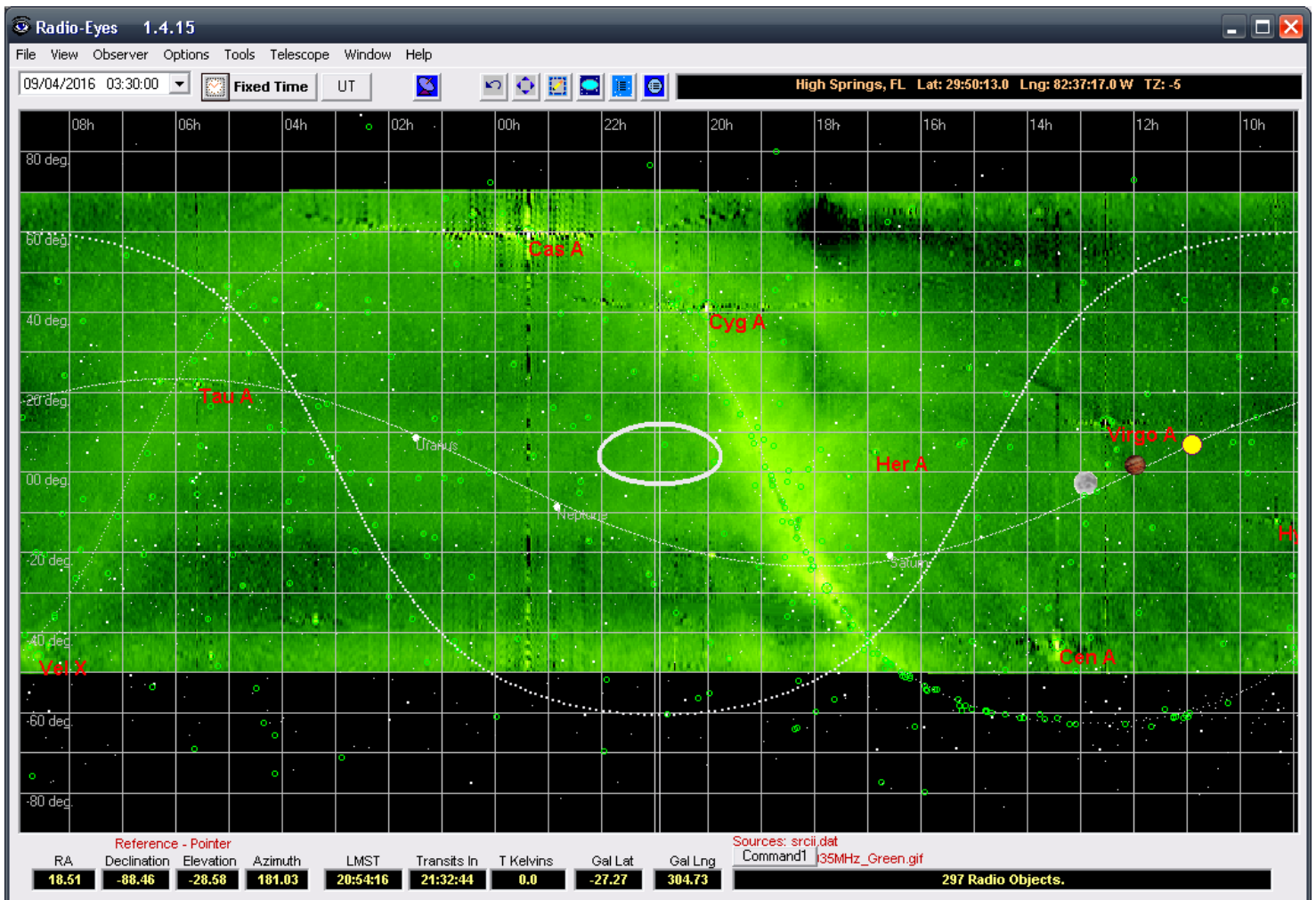


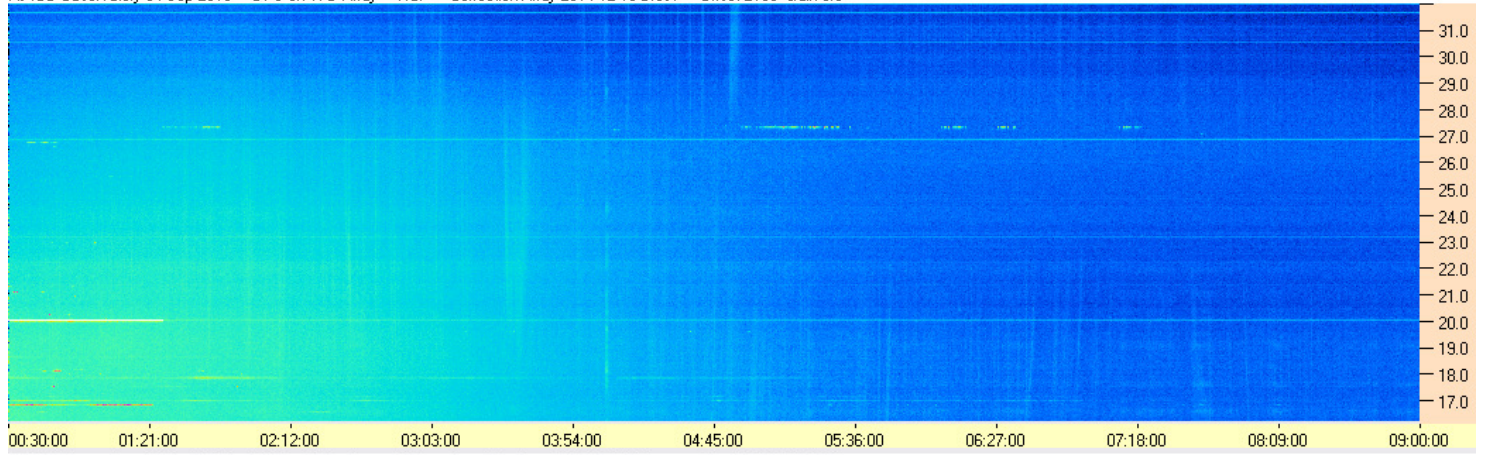
Some nice strong Cas A scintillation from one of the array's northern sidelobes.

Note the dip at 24 MHz as the source moved into a null in the antenna pattern.

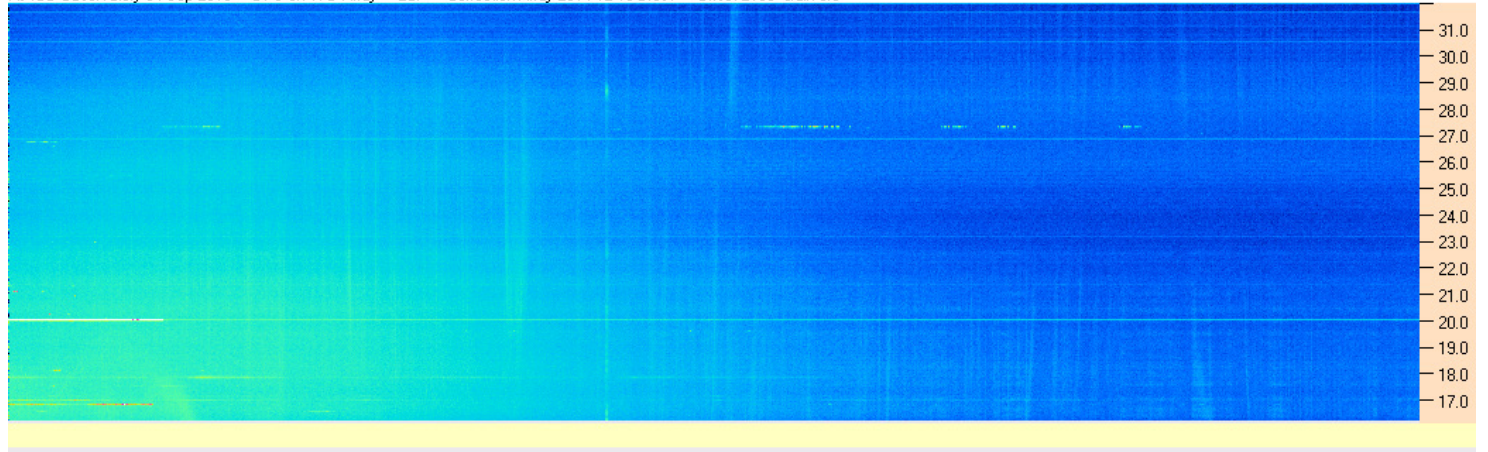
As expected, little to no difference in emission polarization RCP to LCP (i.e., random polarization).



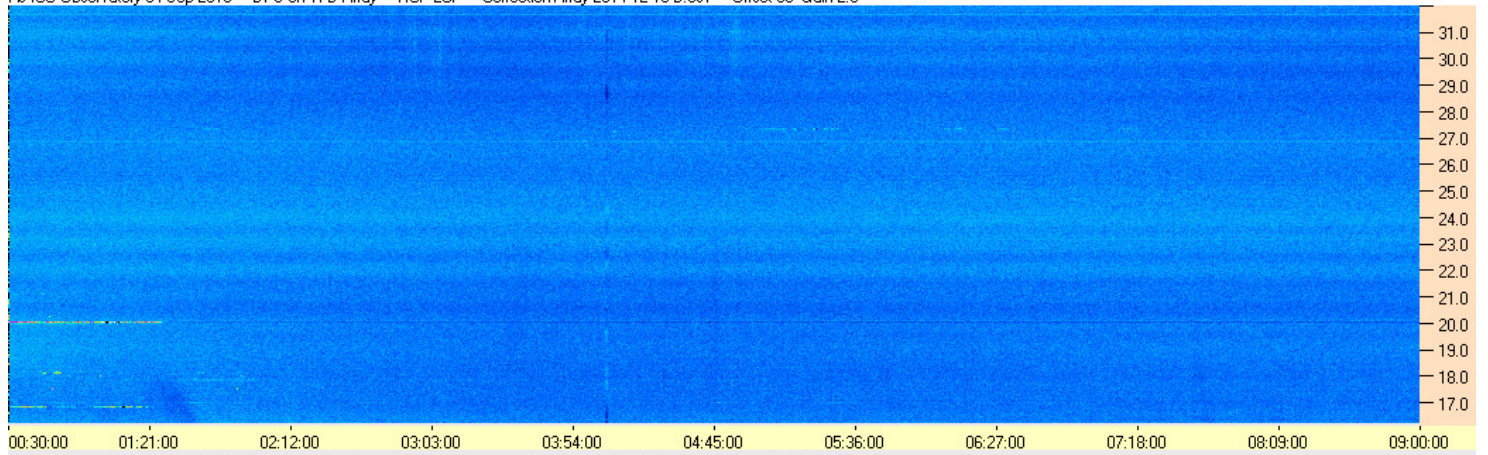
AJ4CO Observatory 04 Sep 2016 - DPS on TFD Array - RCP - Correction Array 2014 12 18 B.csv - Offset 2100 Gain 5.0



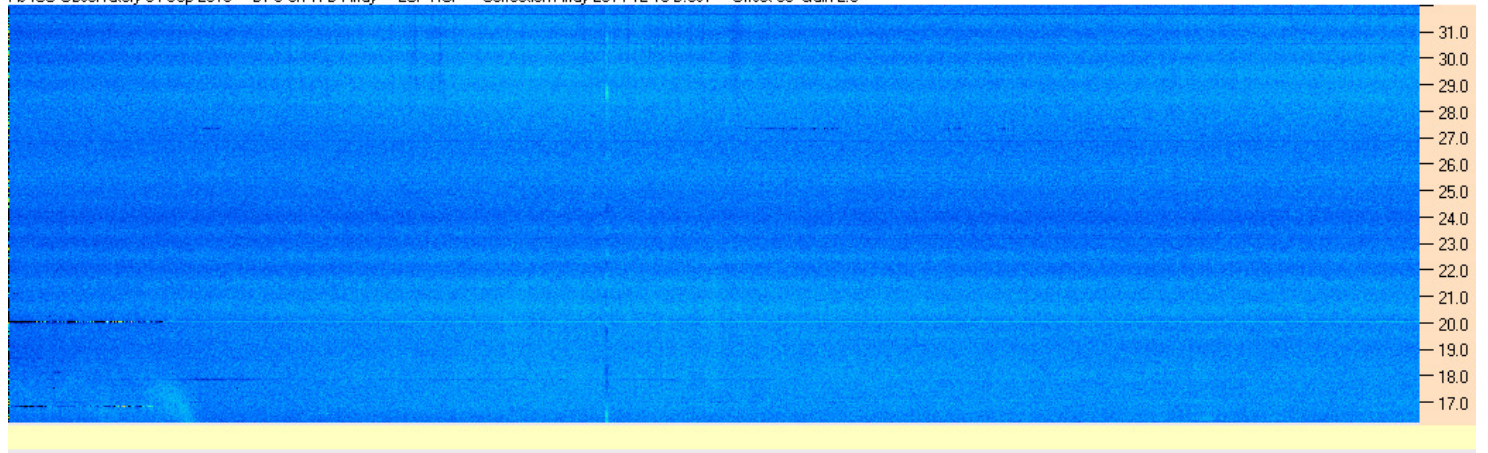
AJ4CO Observatory 04 Sep 2016 - DPS on TFD Array - LCP - Correction Array 2014 12 18 B.csv - Offset 2100 Gain 5.0

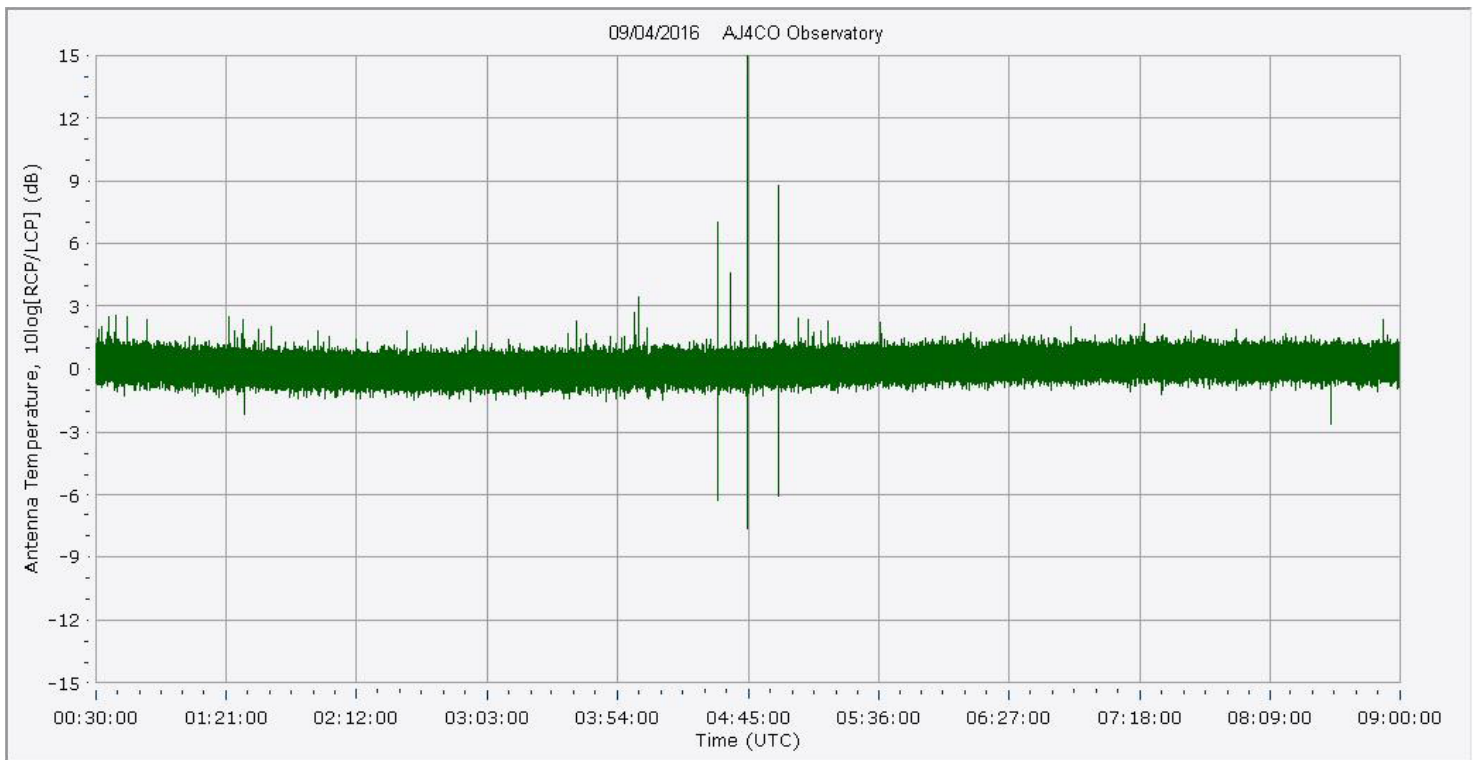
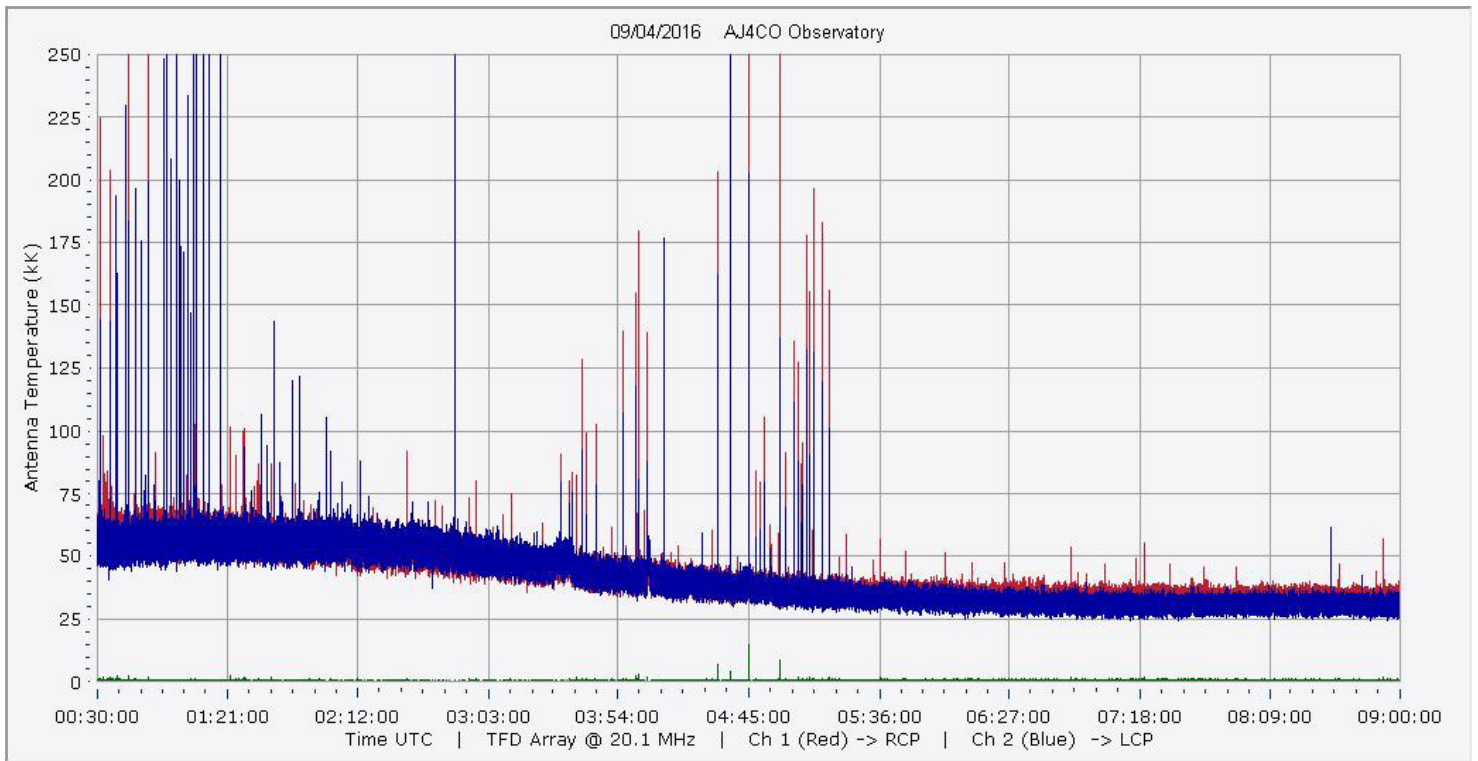


AJ4CO Observatory 04 Sep 2016 - DPS on TFD Array - RCP-LCP - Correction Array 2014 12 18 B.csv - Offset 50 Gain 2.0

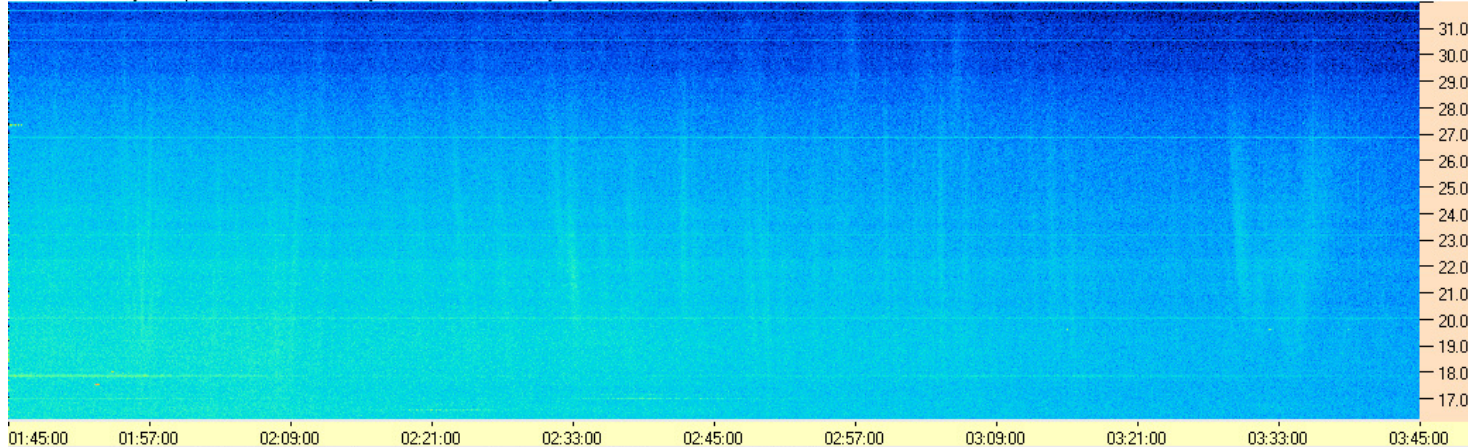


AJ4CO Observatory 04 Sep 2016 - DPS on TFD Array - LCP-RCP - Correction Array 2014 12 18 B.csv - Offset 50 Gain 2.0

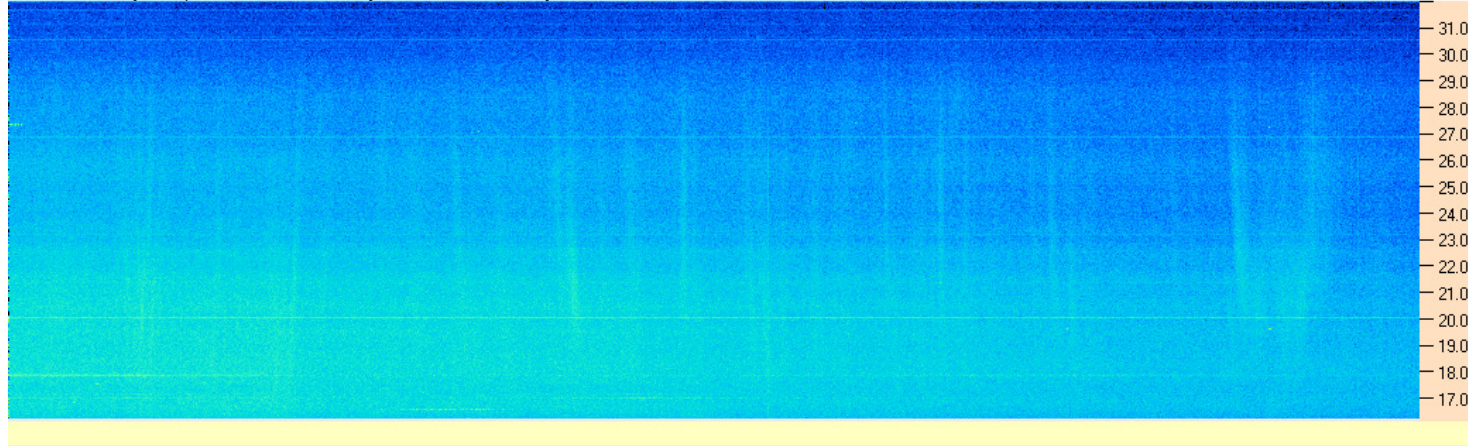




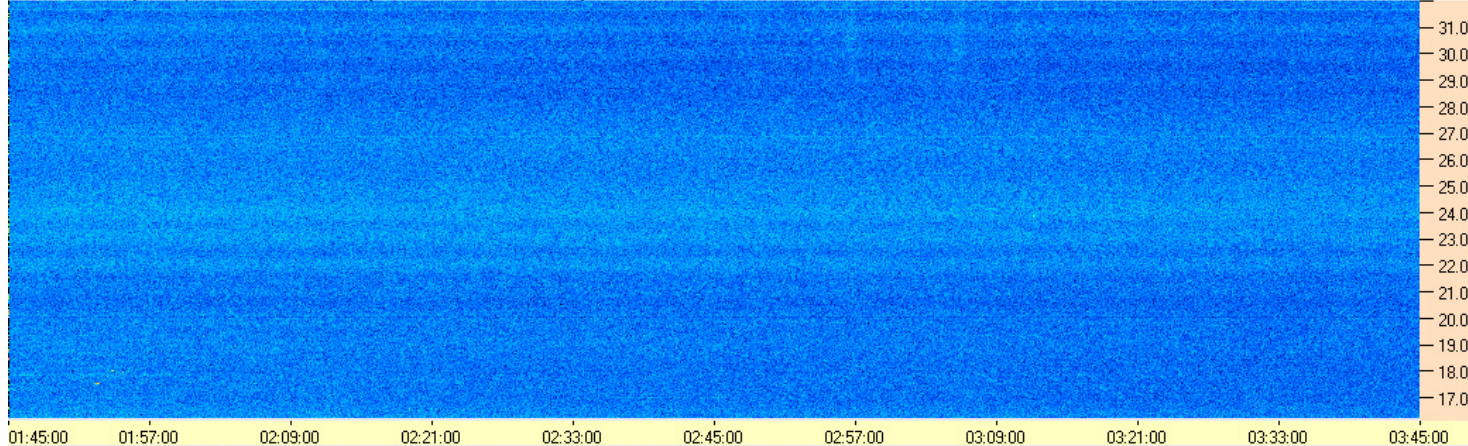
AJ4CO Observatory 04 Sep 2016 - DPS on TFD Array - RCP - Correction Array 2014 12 18 B.csv - Offset 2125 Gain 5.0



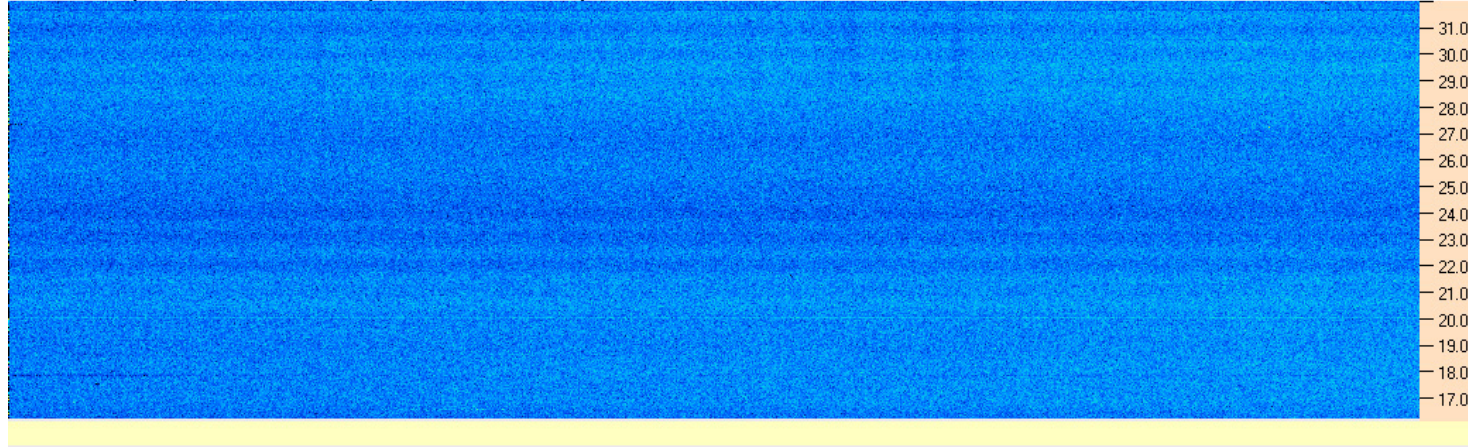
AJ4CO Observatory 04 Sep 2016 - DPS on TFD Array - LCP - Correction Array 2014 12 18 B.csv - Offset 2125 Gain 5.0



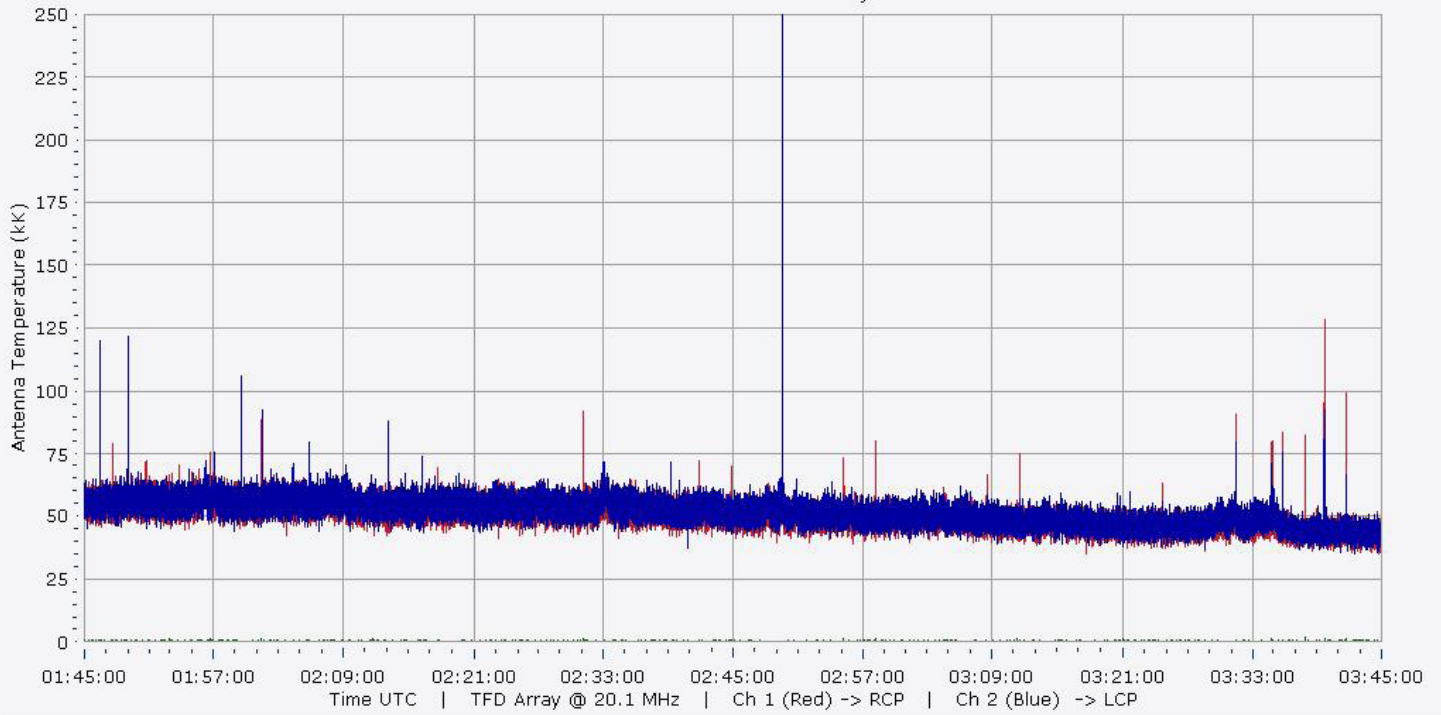
AJ4CO Observatory 04 Sep 2016 - DPS on TFD Array - RCP-LCP - Correction Array 2014 12 18 B.csv - Offset 50 Gain 2.0



AJ4CO Observatory 04 Sep 2016 - DPS on TFD Array - LCP-RCP - Correction Array 2014 12 18 B.csv - Offset 50 Gain 2.0



09/04/2016 AJ4CO Observatory



09/04/2016 AJ4CO Observatory

