

**Subject:** [radiojove-data] 06 Aug 2016 Io-B/D  
**From:** Dave Typinski <davetyp@typnet.net>  
**Date:** 08/07/2016 01:32  
**To:** RadioJove-Data <radiojove-data@lists.nasa.gov>

Adding to Wes & David & Tom's nice reports, here's some amazingly good Io-B and Io-D from Saturday afternoon.

Very nice arc structure for both Io-B and Io-D -- especially so given Jupiter's proximity to the Sun giving rise to ionospheric attenuation and increased band noise.

There were even crosshatched modulation lanes -- incredible! Deep ionospheric scintillation too.

And, also of course, the presence of weak line noise made possible by Duke Energy.

RCP dominant L bursting 1854-2135 UTC from 16 to 31 MHz, vertex early arcs (Io-B)

RCP dominant S bursting 1858-2018 UTC from 23 to 32 MHz, positive emission envelope drift. (Io-B)

LCP dominant L bursting 1934-2154 UTC from 16 to 24 MHz, vertex early arcs (Io-D)

Jupiter was  $-18^\circ$  to  $+27^\circ$  off axis.

Jupiter was trailing the Sun by  $38^\circ$ .

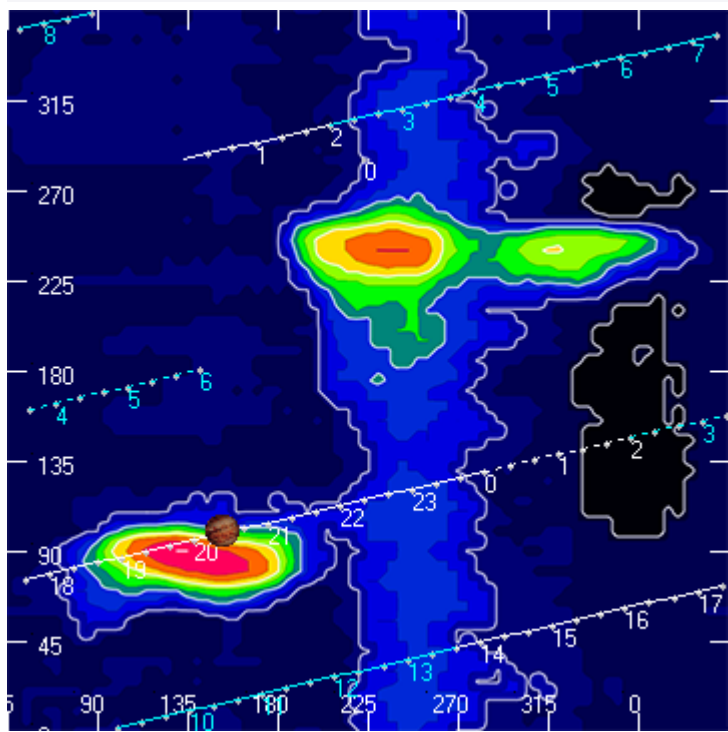
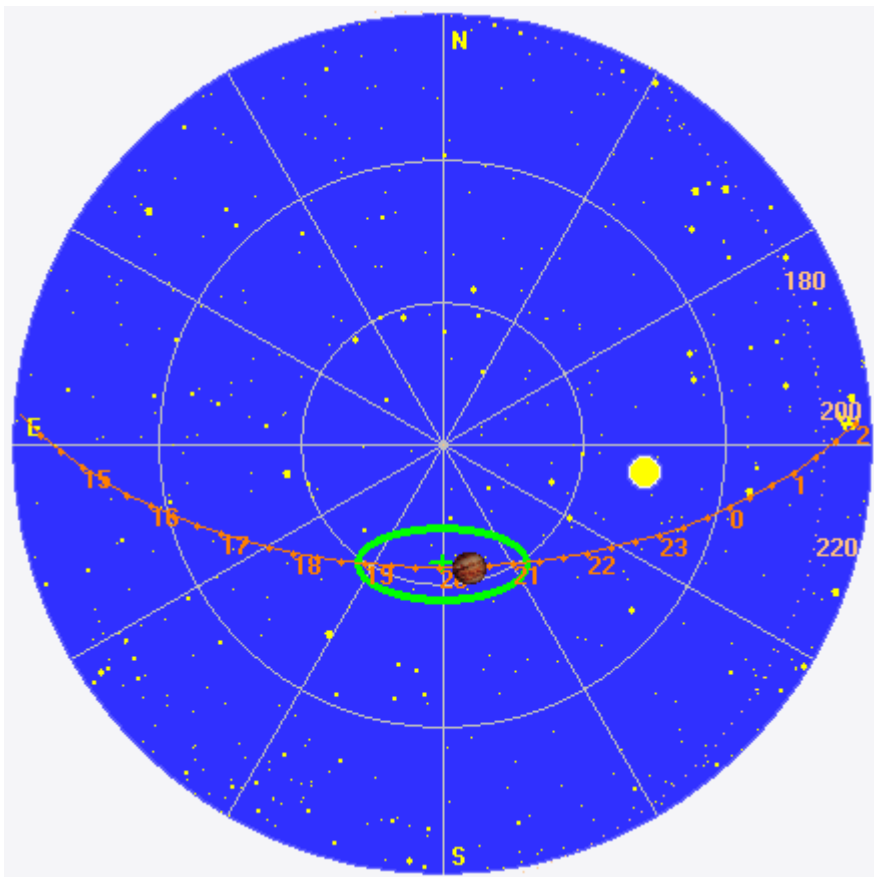
--

Dave

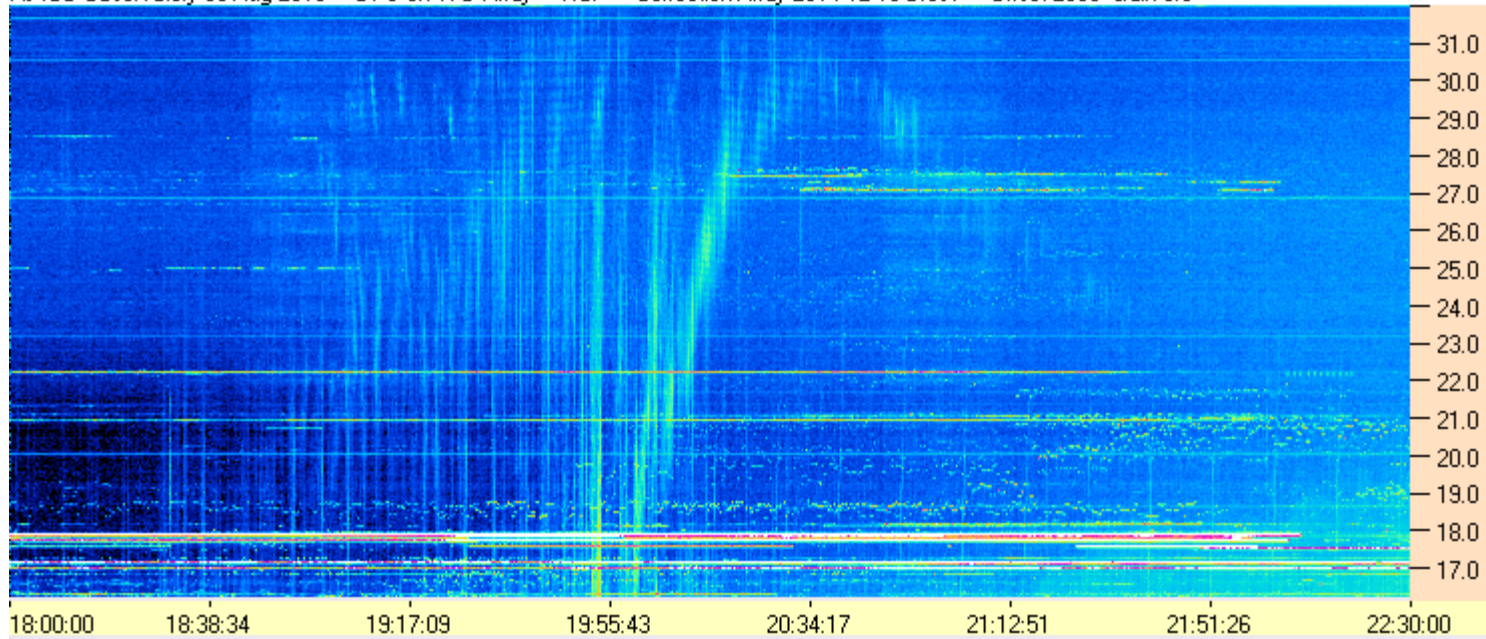
---

**AJ4CO Observatory 06 Aug 2016, log entry 745-747**

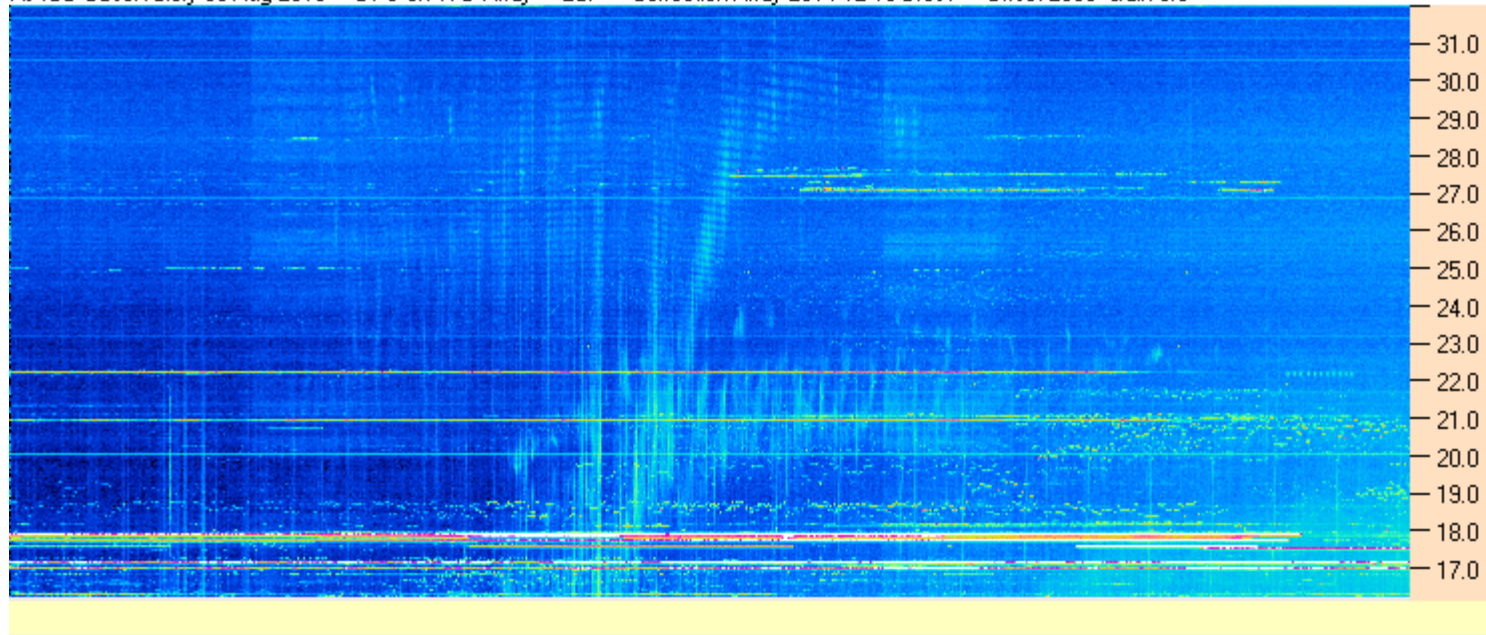
---



AJ4CO Observatory 06 Aug 2016 - DPS on TFD Array - RCP - Correction Array 2014 12 18 B.csv - Offset 2050 Gain 5.0

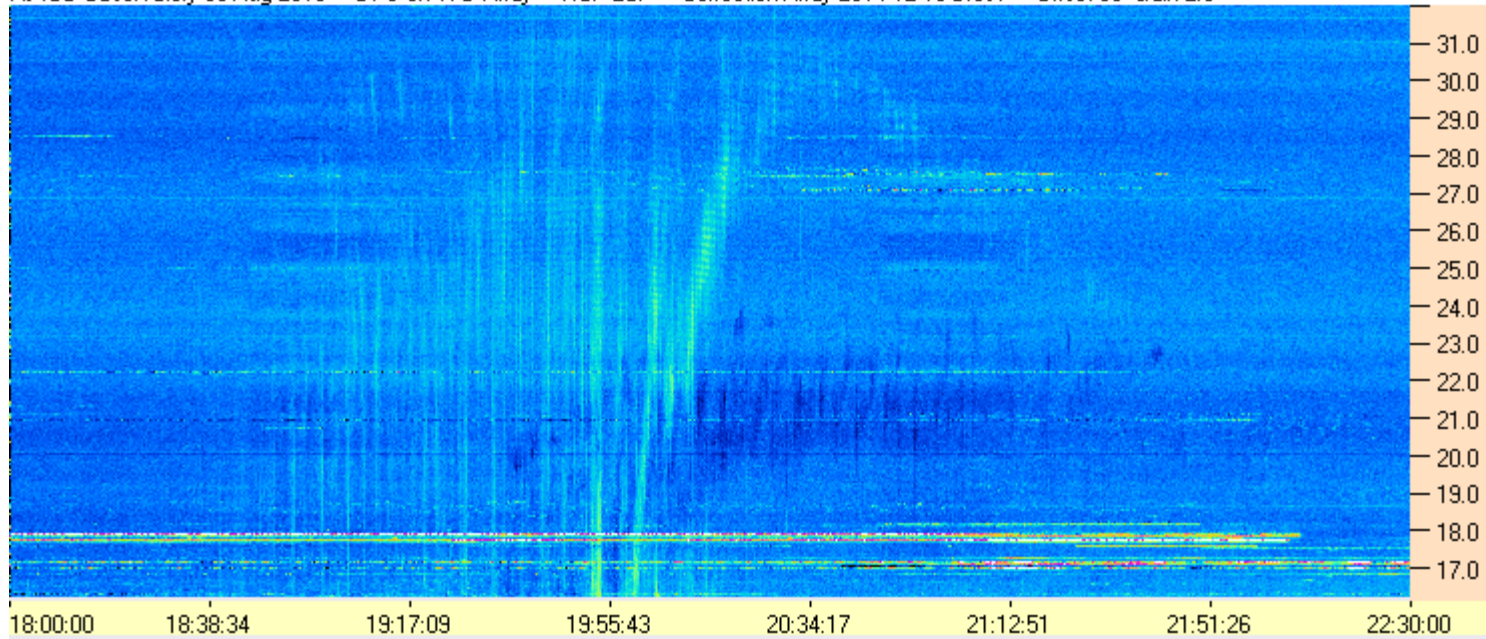


AJ4CO Observatory 06 Aug 2016 - DPS on TFD Array - LCP - Correction Array 2014 12 18 B.csv - Offset 2050 Gain 5.0

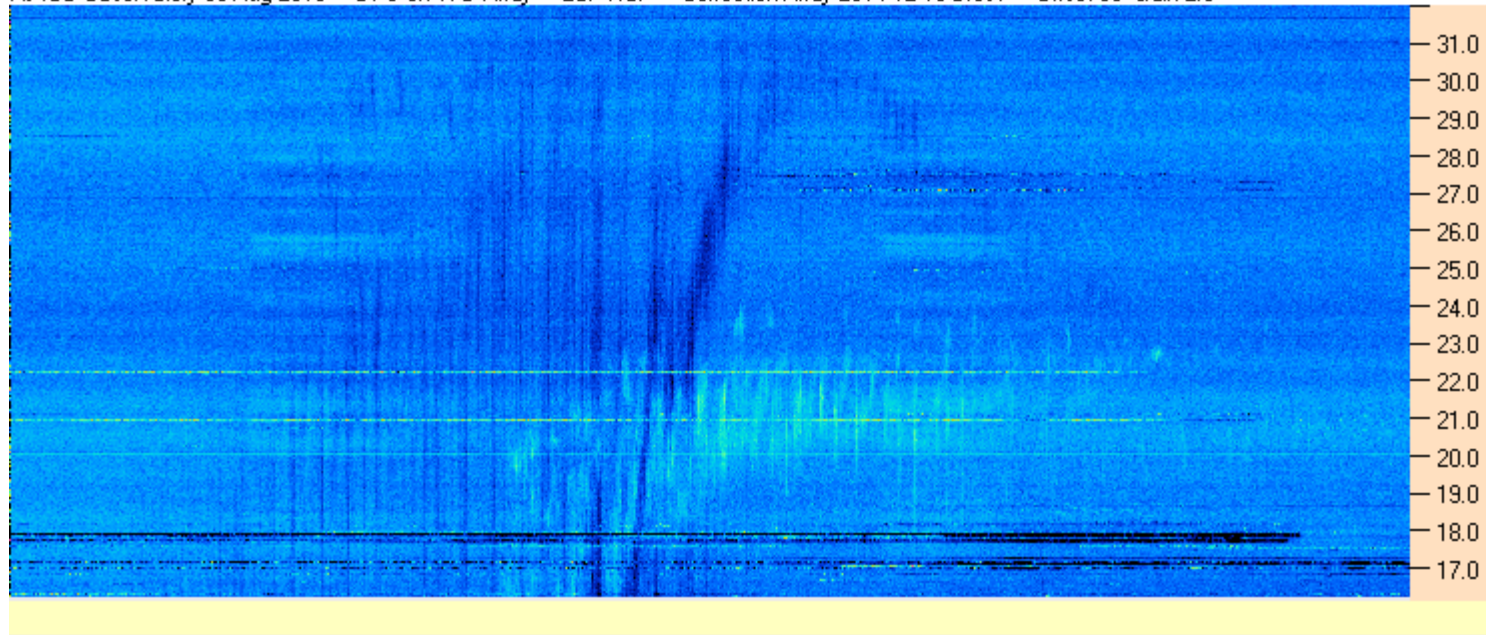


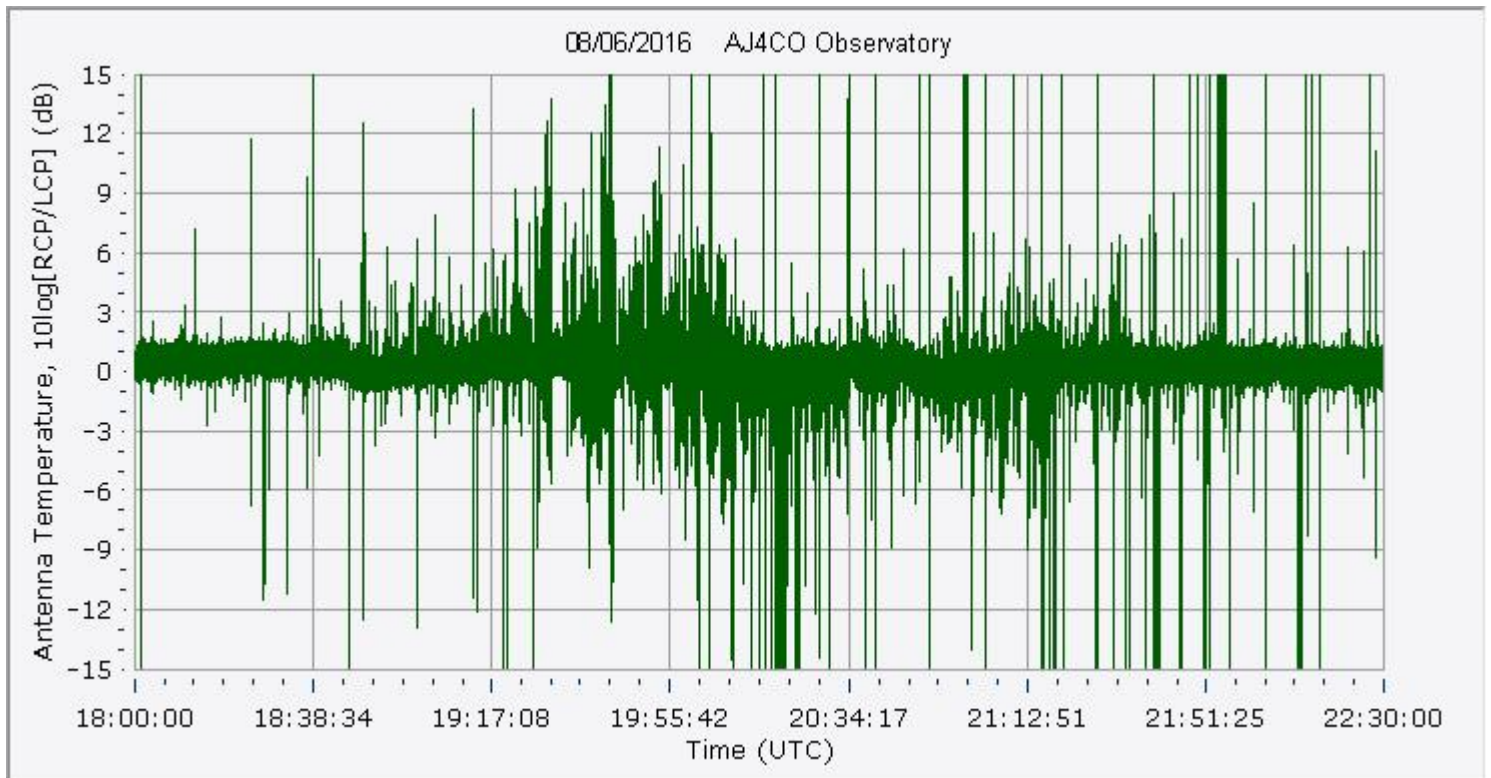
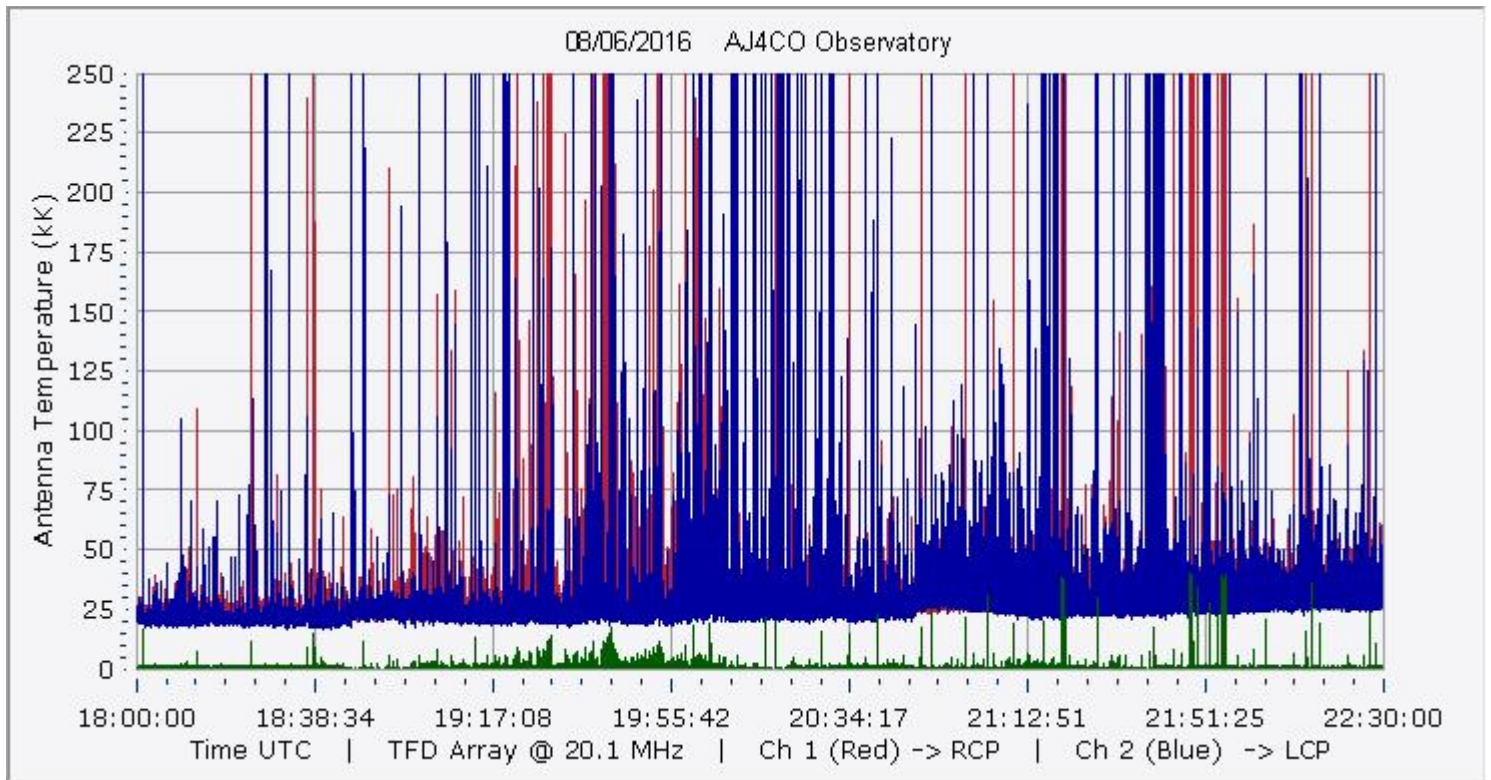


AJ4CO Observatory 06 Aug 2016 - DPS on TFD Array - RCP-LCP - Correction Array 2014 12 18 B.csv - Offset 50 Gain 2.0



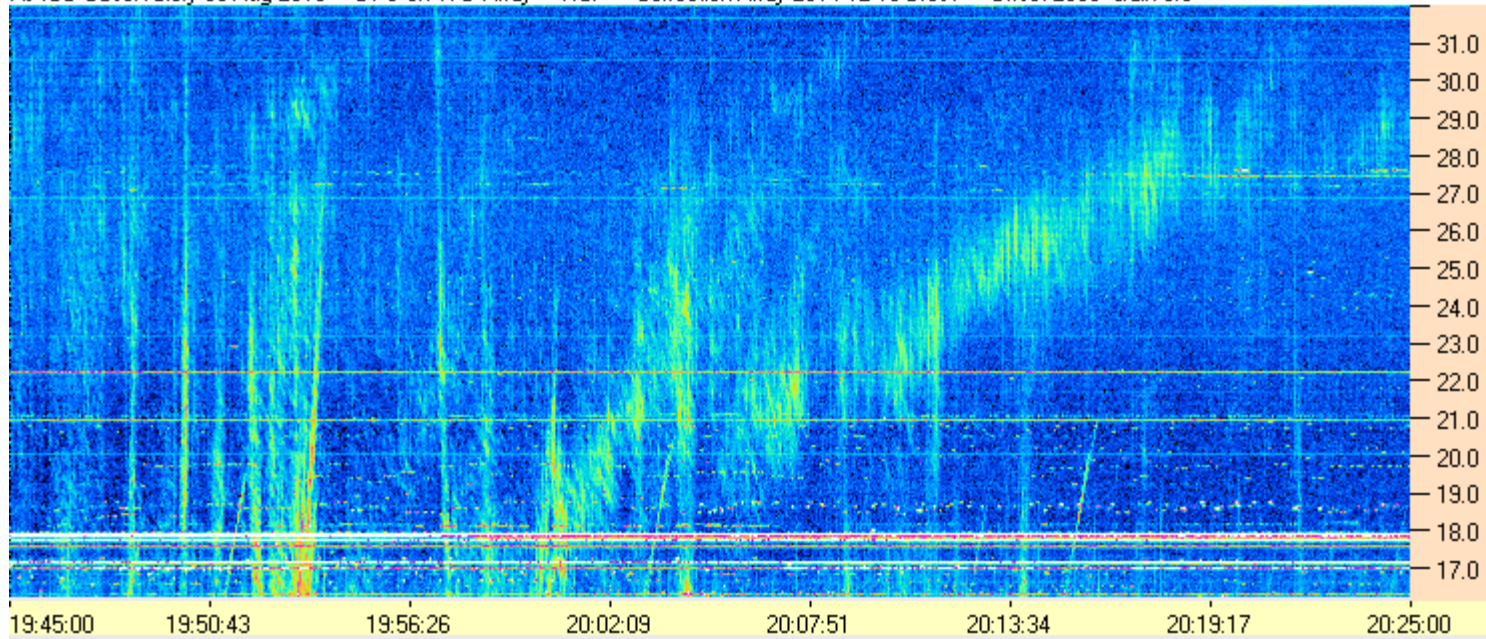
AJ4CO Observatory 06 Aug 2016 - DPS on TFD Array - LCP-RCP - Correction Array 2014 12 18 B.csv - Offset 50 Gain 2.0



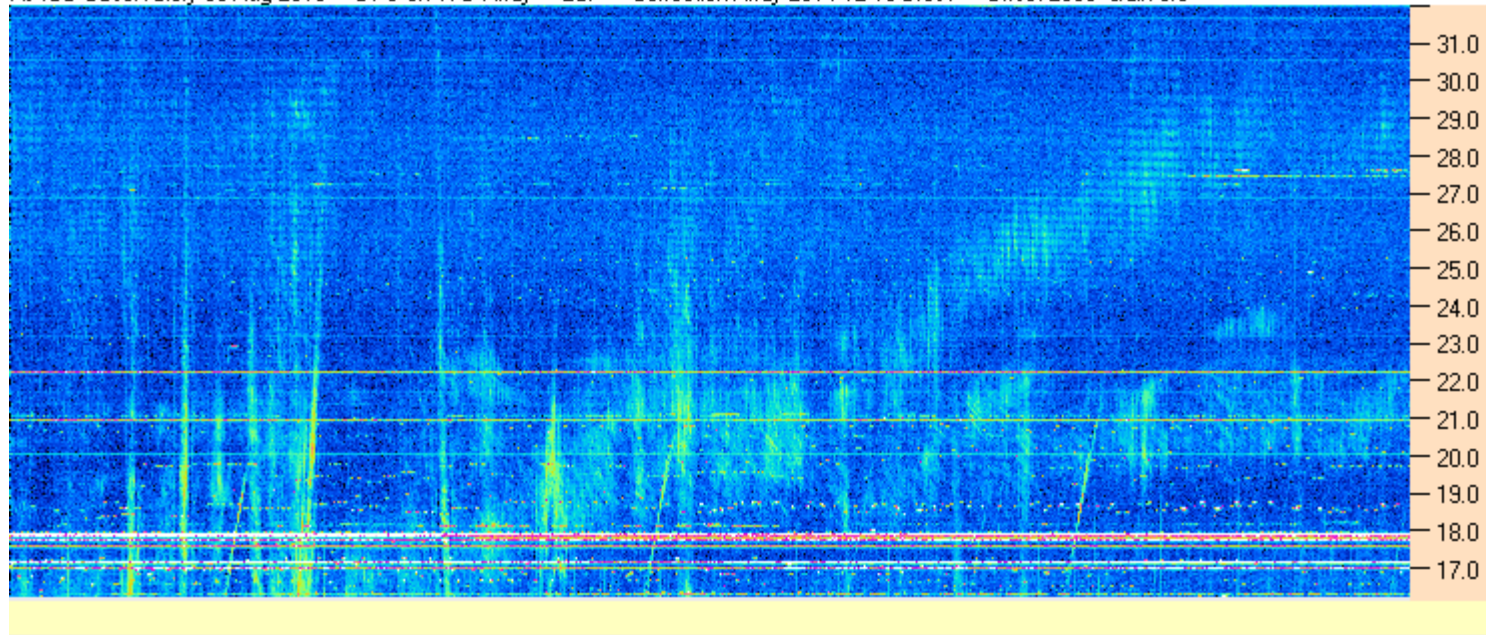




AJ4CO Observatory 06 Aug 2016 - DPS on TFD Array - RCP - Correction Array 2014 12 18 B.csv - Offset 2050 Gain 5.0

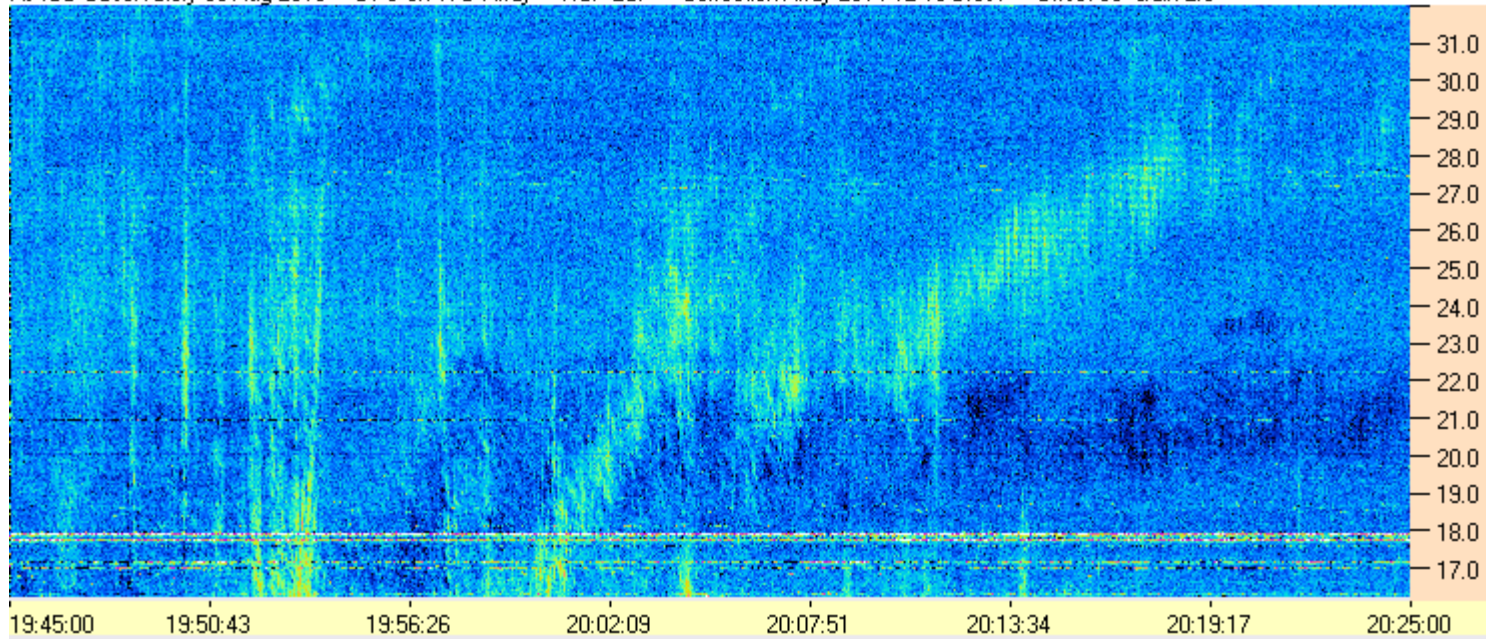


AJ4CO Observatory 06 Aug 2016 - DPS on TFD Array - LCP - Correction Array 2014 12 18 B.csv - Offset 2050 Gain 5.0

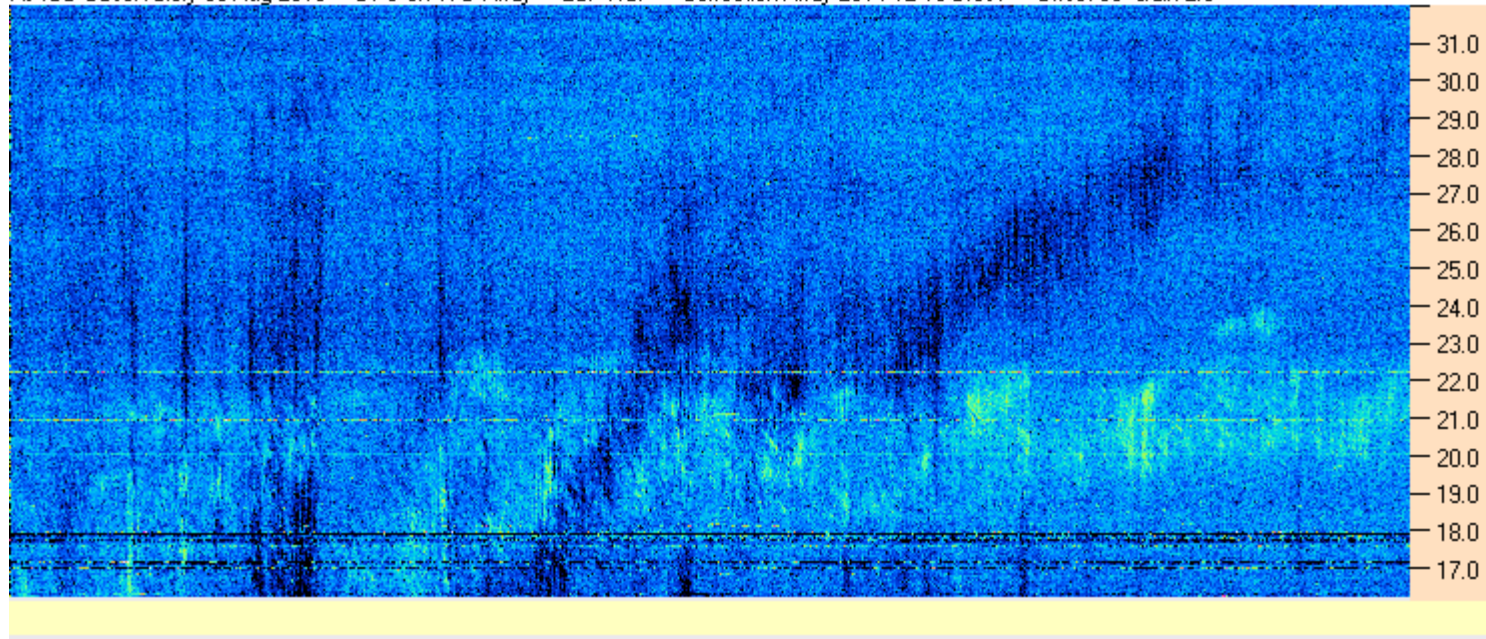




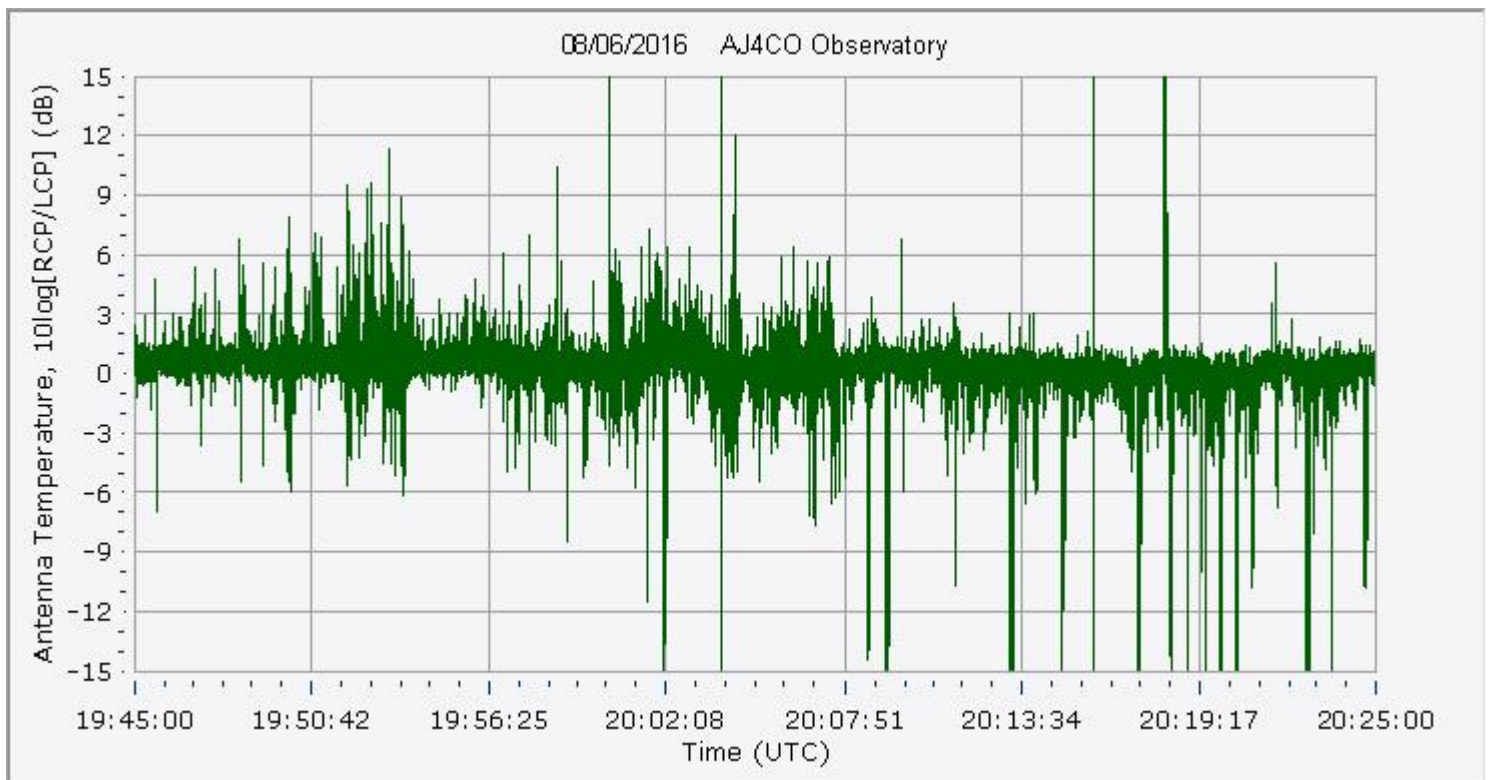
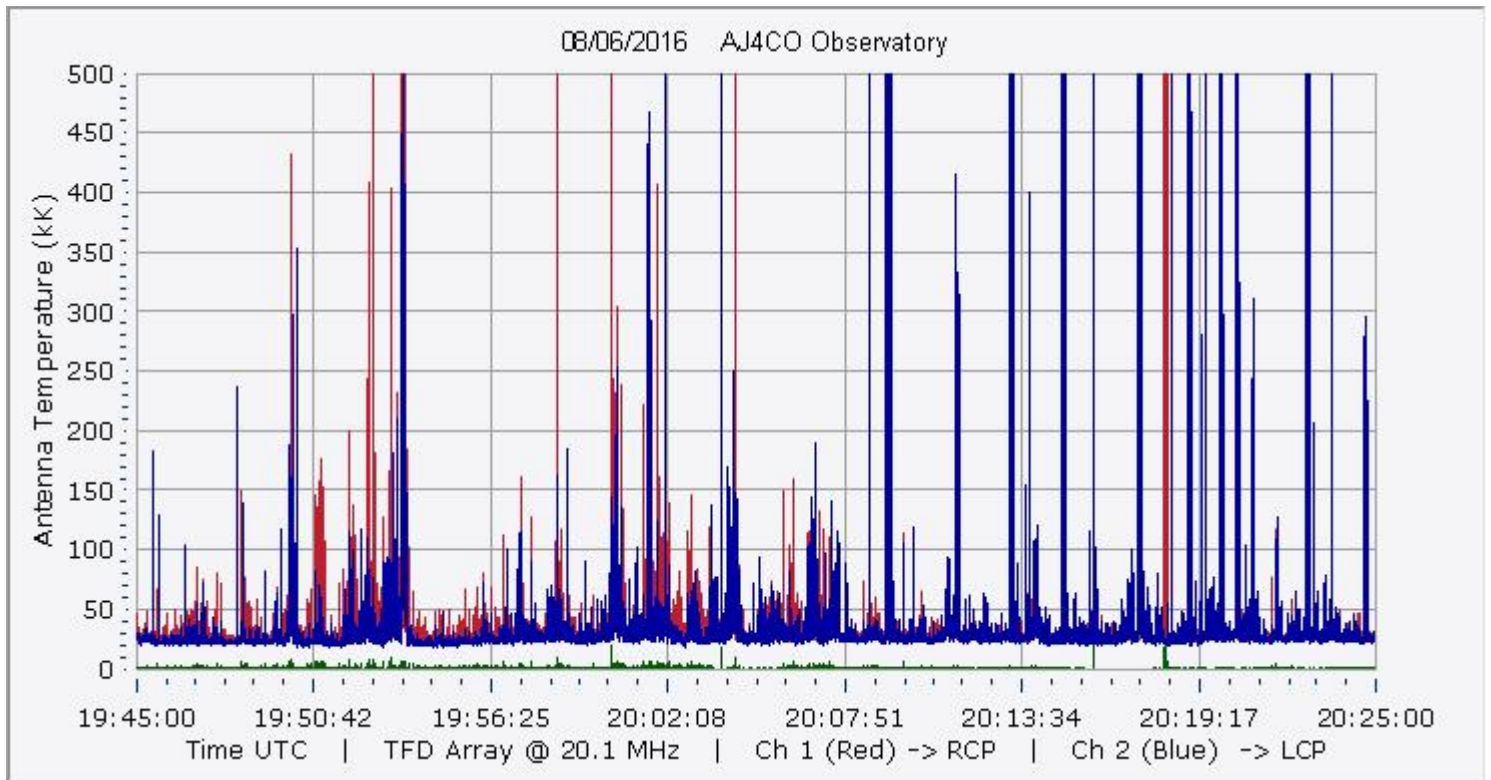
AJ4CO Observatory 06 Aug 2016 - DPS on TFD Array - RCP-LCP - Correction Array 2014 12 18 B.csv - Offset 50 Gain 2.0



AJ4CO Observatory 06 Aug 2016 - DPS on TFD Array - LCP-RCP - Correction Array 2014 12 18 B.csv - Offset 50 Gain 2.0

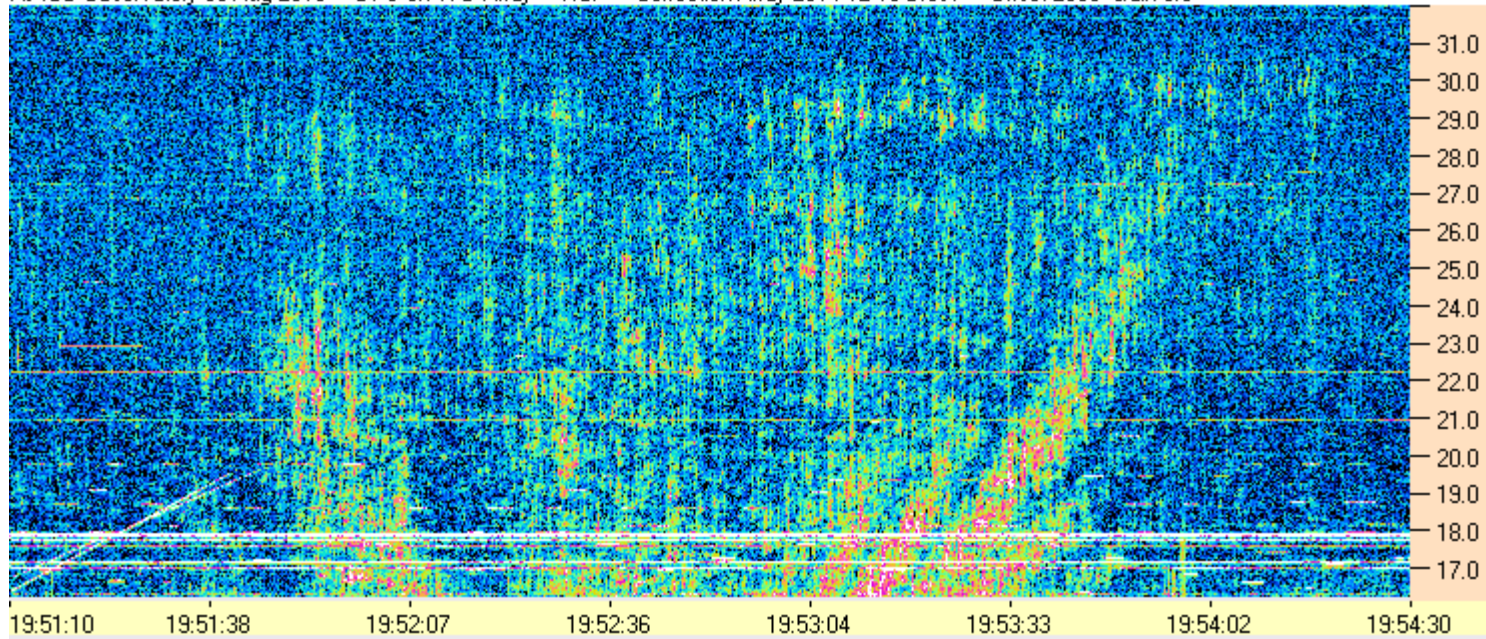




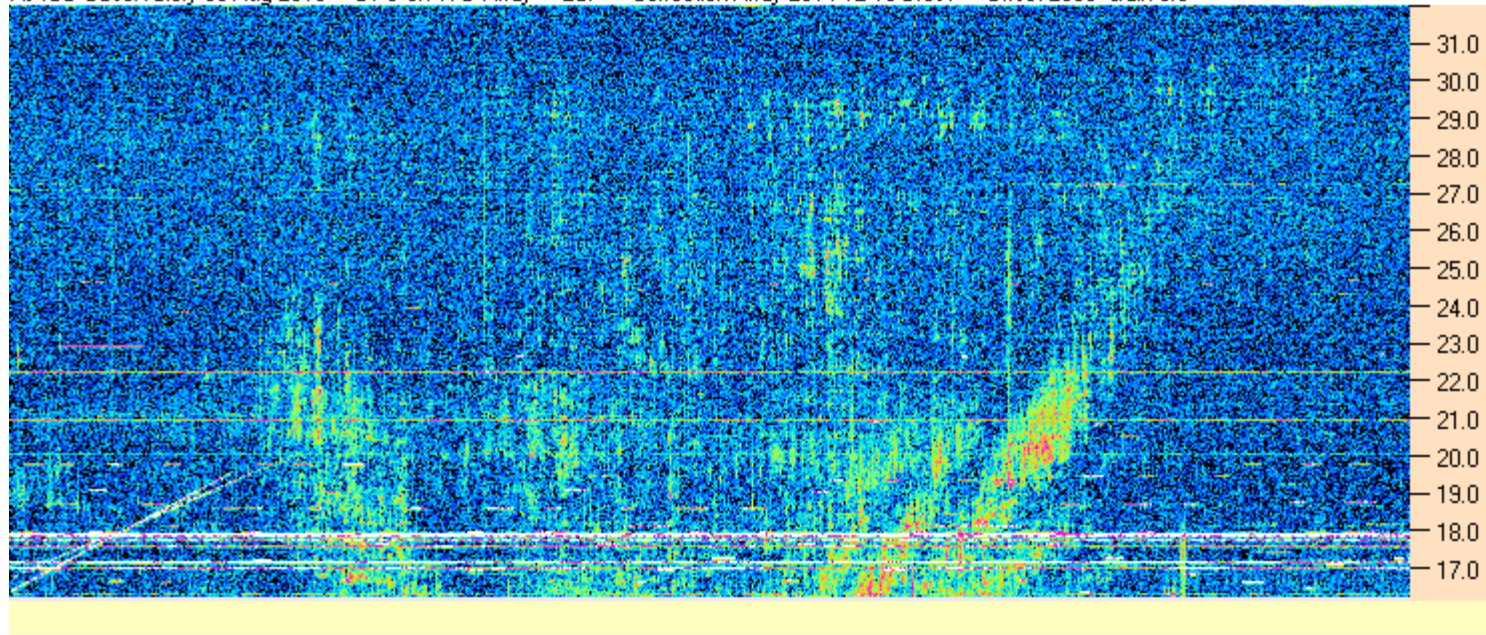




AJ4CO Observatory 06 Aug 2016 - DPS on TFD Array - RCP - Correction Array 2014 12 18 B.csv - Offset 2050 Gain 5.0

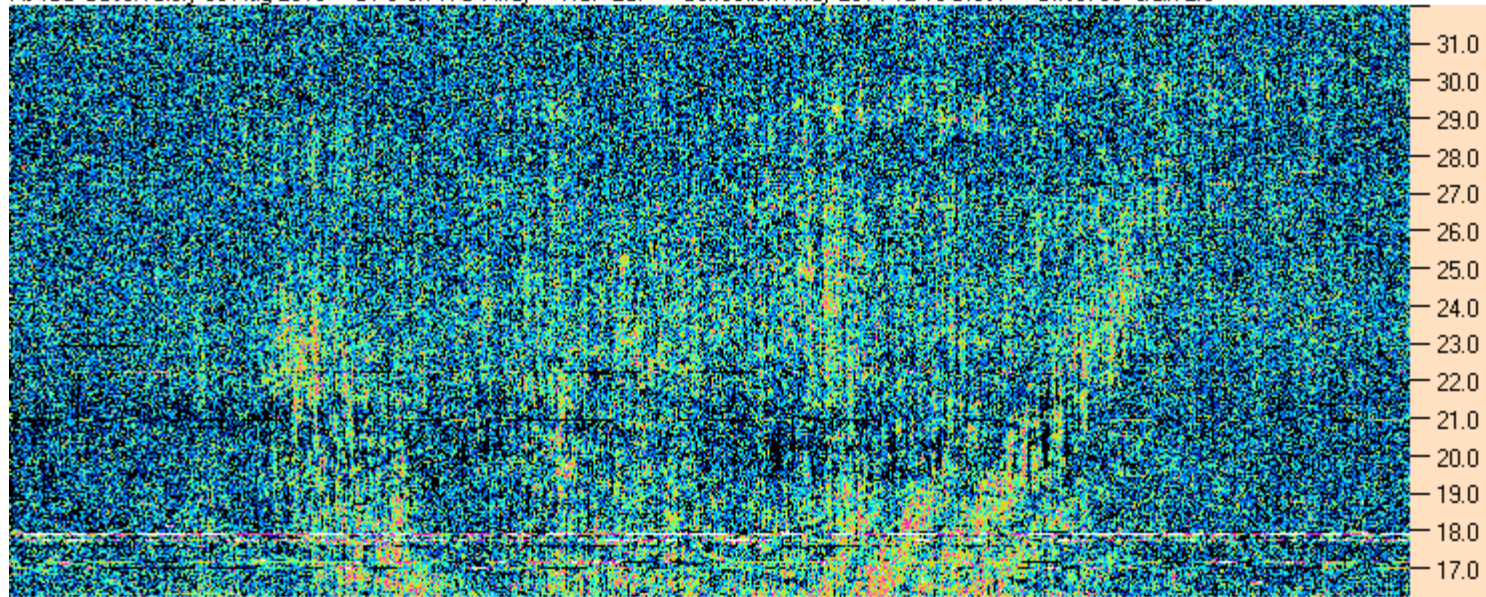


AJ4CO Observatory 06 Aug 2016 - DPS on TFD Array - LCP - Correction Array 2014 12 18 B.csv - Offset 2050 Gain 5.0





AJ4CO Observatory 06 Aug 2016 - DPS on TFD Array - RCP-LCP - Correction Array 2014 12 18 B.csv - Offset 50 Gain 2.0



19:51:10 19:51:39 19:52:07 19:52:36 19:53:04 19:53:33 19:54:02 19:54:30

AJ4CO Observatory 06 Aug 2016 - DPS on TFD Array - LCP-RCP - Correction Array 2014 12 18 B.csv - Offset 50 Gain 2.0

