

**Subject:** [radiojove-data] 29 Jul 2016 Io-C

**From:** Dave Typinski <davetyp@typnet.net>

**Date:** 07/30/2016 13:16

**To:** RadioJove-Data <radiojove-data@lists.nasa.gov>

Here's some Io-C from Friday afternoon.

LCP dominant L bursting 1753-1849 UTC from 16 to 20 MHz, negative emission envelope drift.

Jupiter was  $-40^\circ$  to  $-26^\circ$  off axis.

Jupiter was trailing the Sun by  $45^\circ$ .

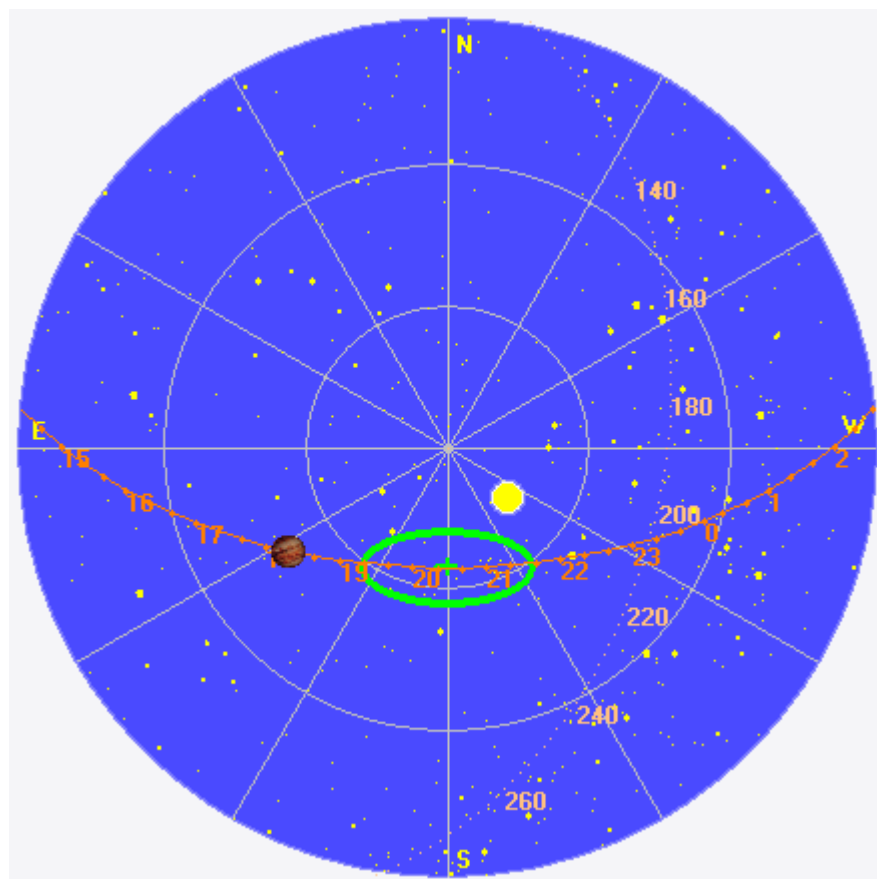
--

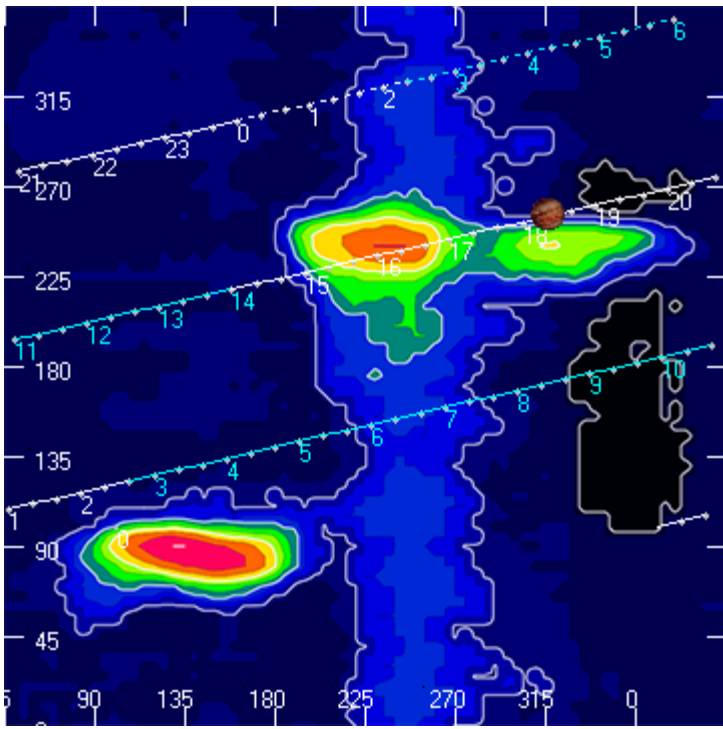
Dave

---

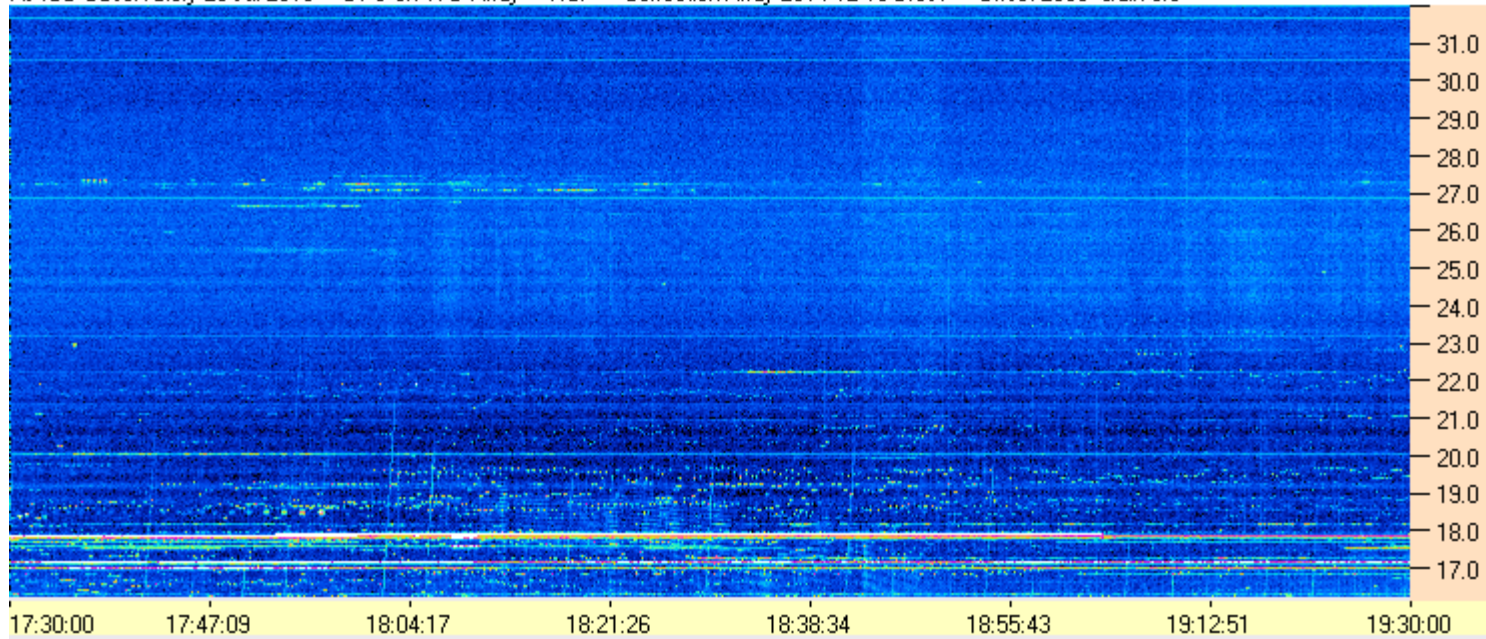
### AJ4CO Observatory 29 Jul 2016, log entry 740

---

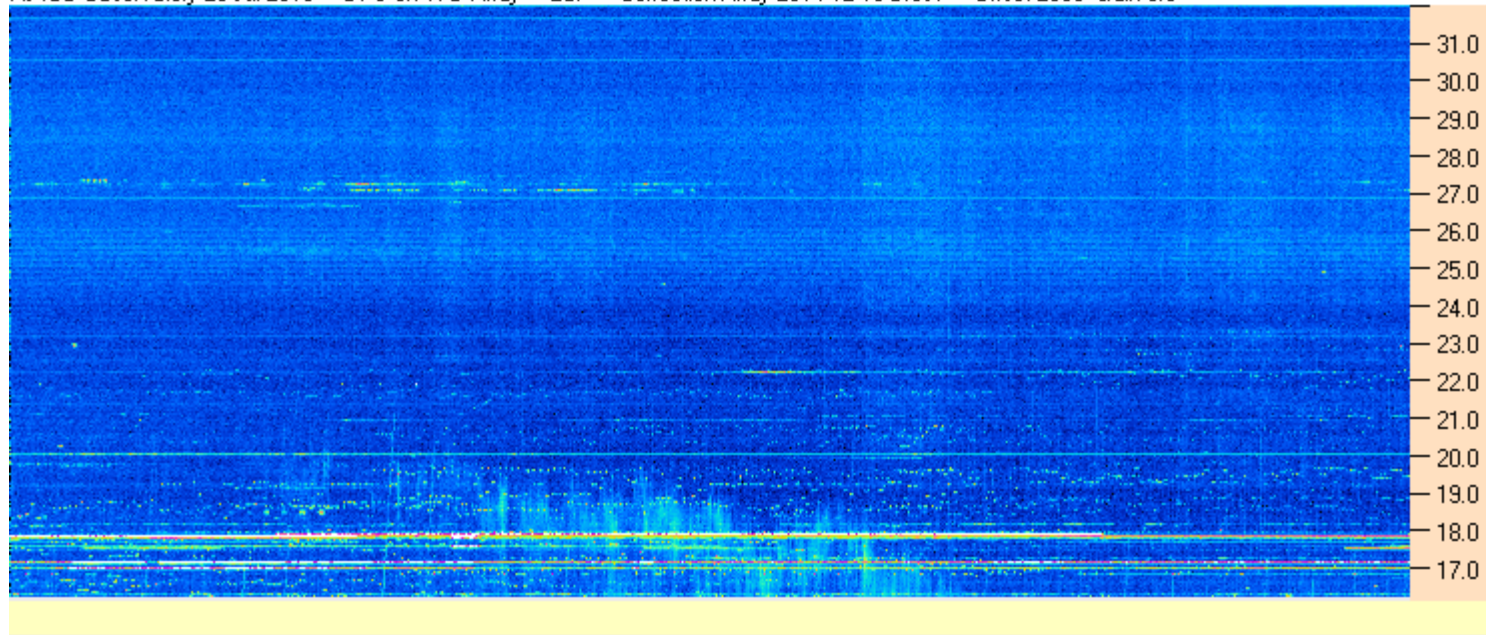




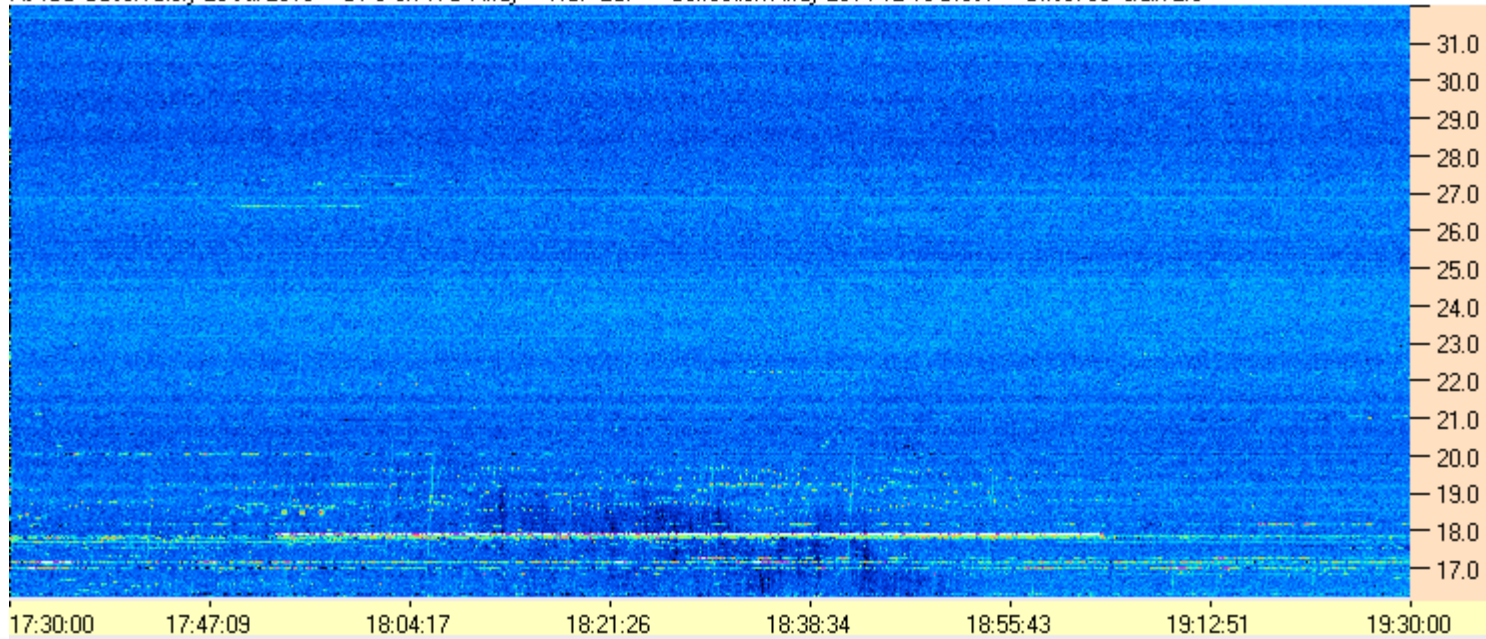
AJ4CO Observatory 29 Jul 2016 - DPS on TFD Array - RCP - Correction Array 2014 12 18 B.csv - Offset 2050 Gain 5.0



AJ4CO Observatory 29 Jul 2016 - DPS on TFD Array - LCP - Correction Array 2014 12 18 B.csv - Offset 2050 Gain 5.0



AJ4CO Observatory 29 Jul 2016 - DPS on TFD Array - RCP-LCP - Correction Array 2014 12 18 B.csv - Offset 50 Gain 2.0



AJ4CO Observatory 29 Jul 2016 - DPS on TFD Array - LCP-RCP - Correction Array 2014 12 18 B.csv - Offset 50 Gain 2.0

