

**Subject:** [radiojove-data] 04 Jul 2016 Io-A/C  
**From:** Dave Typinski <davetyp@typnet.net>  
**Date:** 07/09/2016 15:26  
**To:** RadioJove-Data <radiojove-data@lists.nasa.gov>

Adding to Tom & Nathan & Wes & Francisco's nice reports, here's some Io-A and Io-C from 7/4.

RCP dominant L bursting 1941-2053 UTC from 16 to 28 MHz, negative emission envelope drift. (Io-A)

LCP dominant S bursting 2122-2216 UTC from 16 to 23 MHz, negative emission envelope drift. (Io-C)

LCP dominant narrow band S burst trains 2218-2332 UTC from 16 to 25 MHz, negative emission envelope drift. (Io-C)

LCP dominant L bursting 2219-2332 UTC from 16 to 24 MHz, negative emission envelope drift. (Io-C)

Jupiter was  $-33^\circ$  to  $+24^\circ$  off axis.

Jupiter was trailing the Sun by  $64^\circ$ .

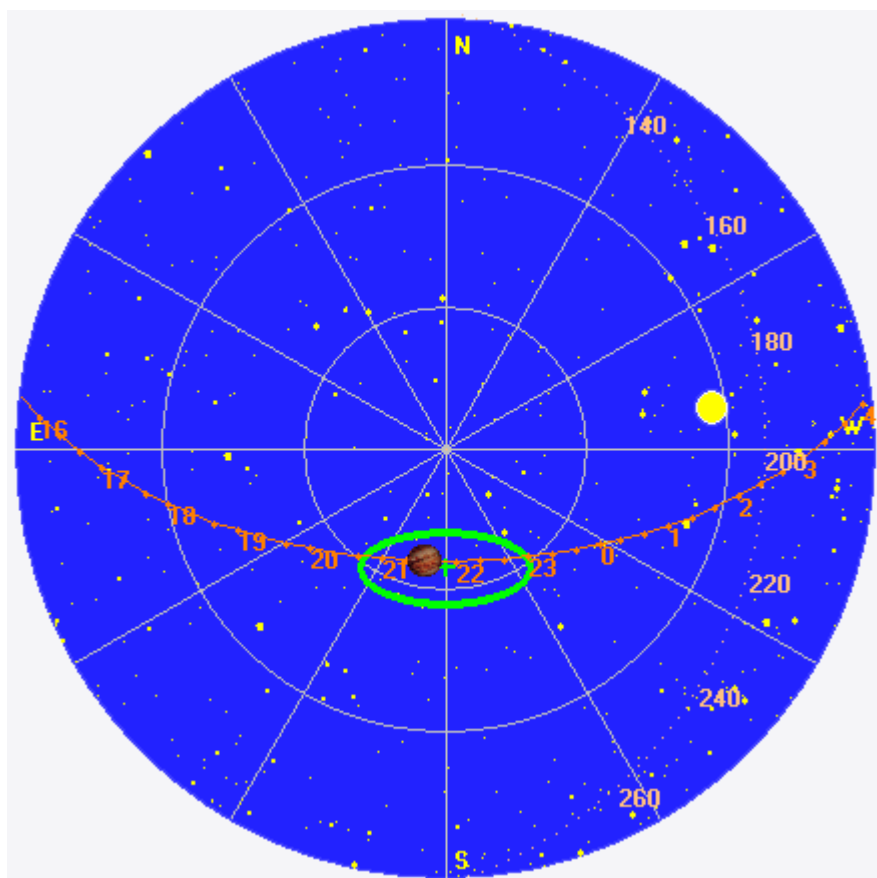
--

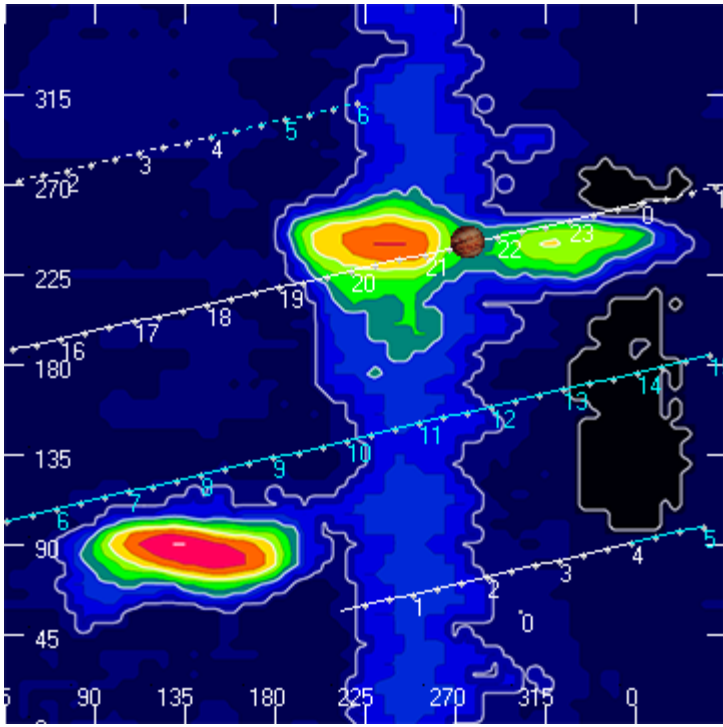
Dave

---

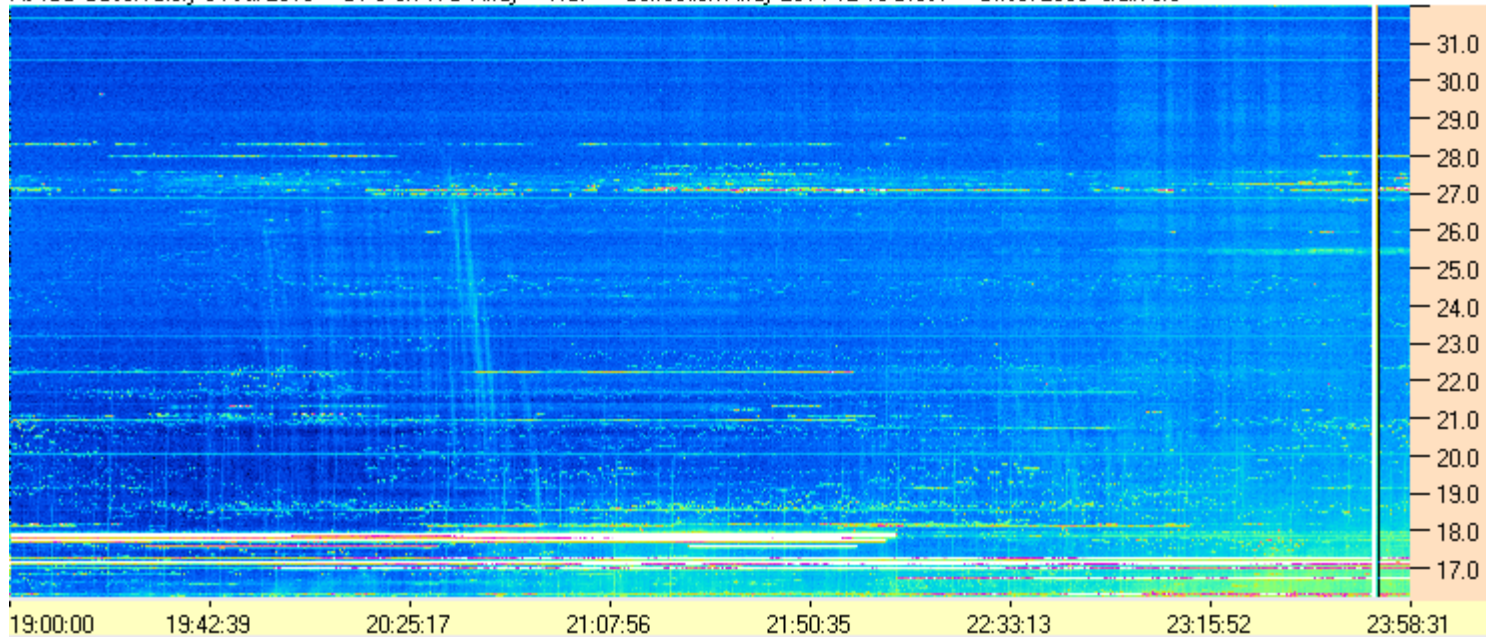
**AJ4CO Observatory 04 Jul 2016, log entry 729-732**

---

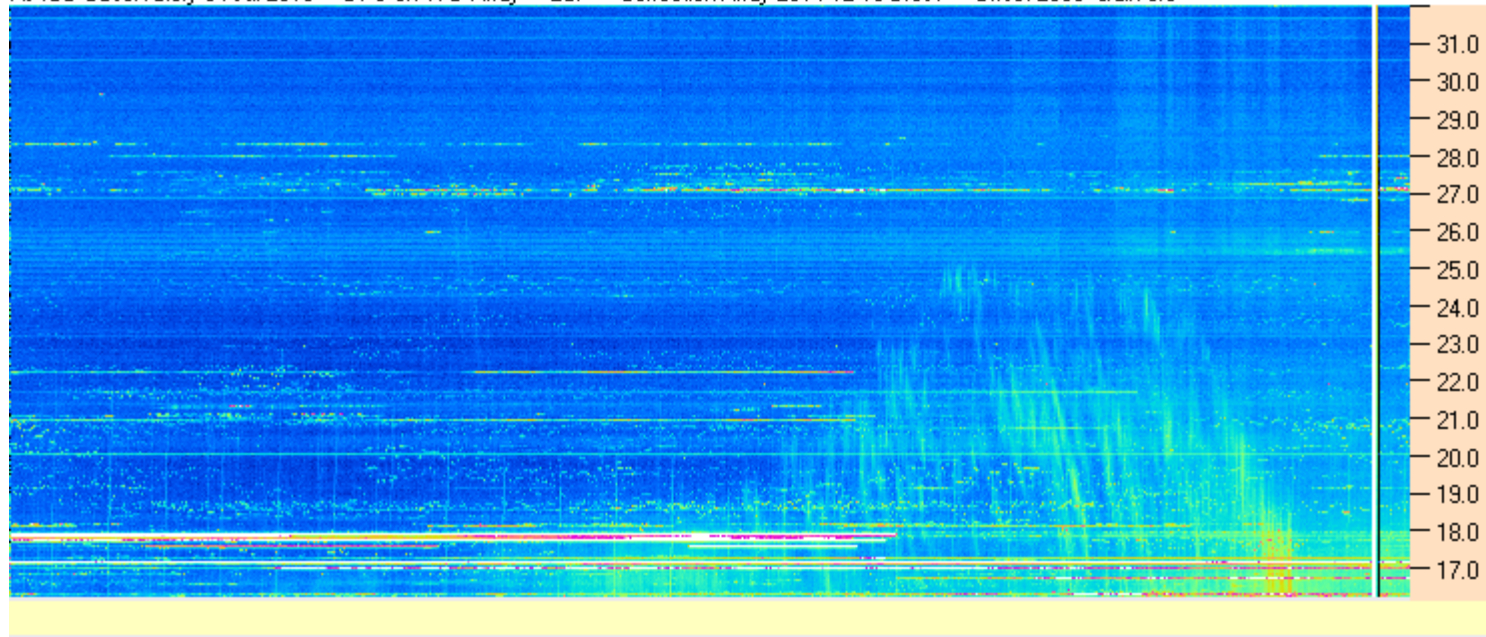




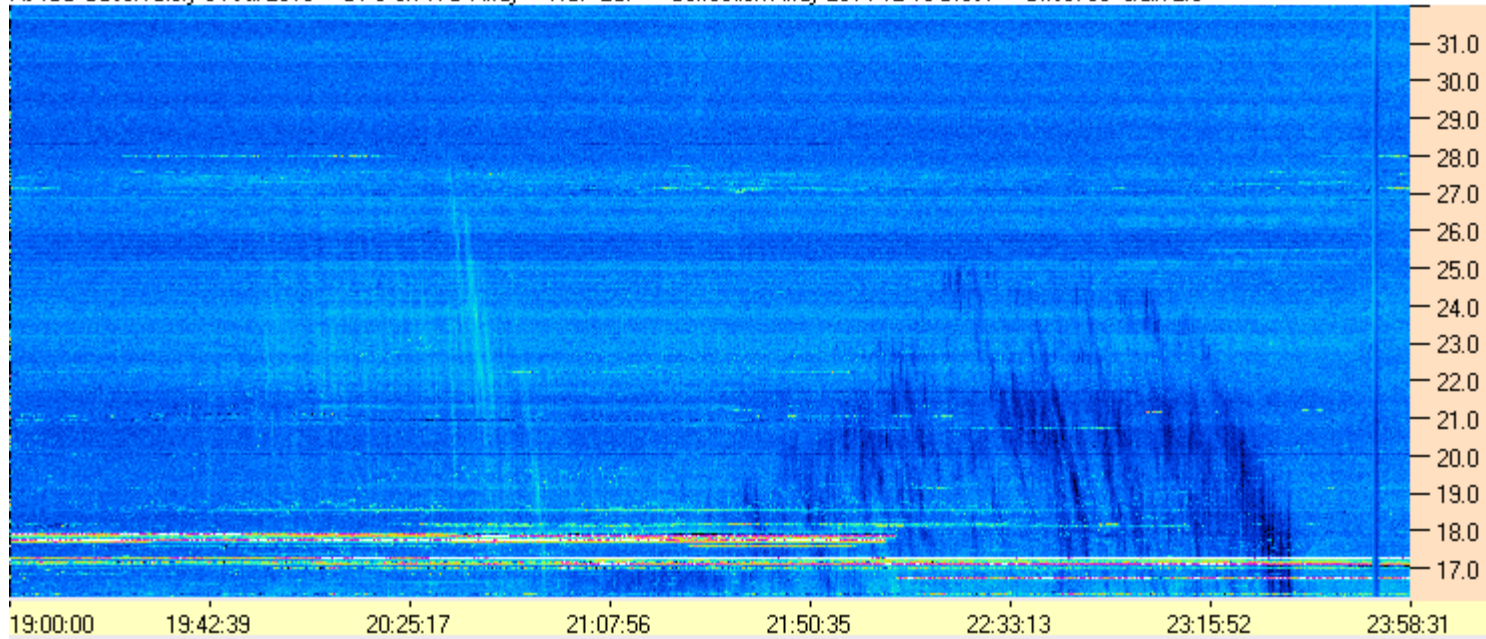
AJ4CO Observatory 04 Jul 2016 - DPS on TFD Array - RCP - Correction Array 2014 12 18 B.csv - Offset 2050 Gain 5.0



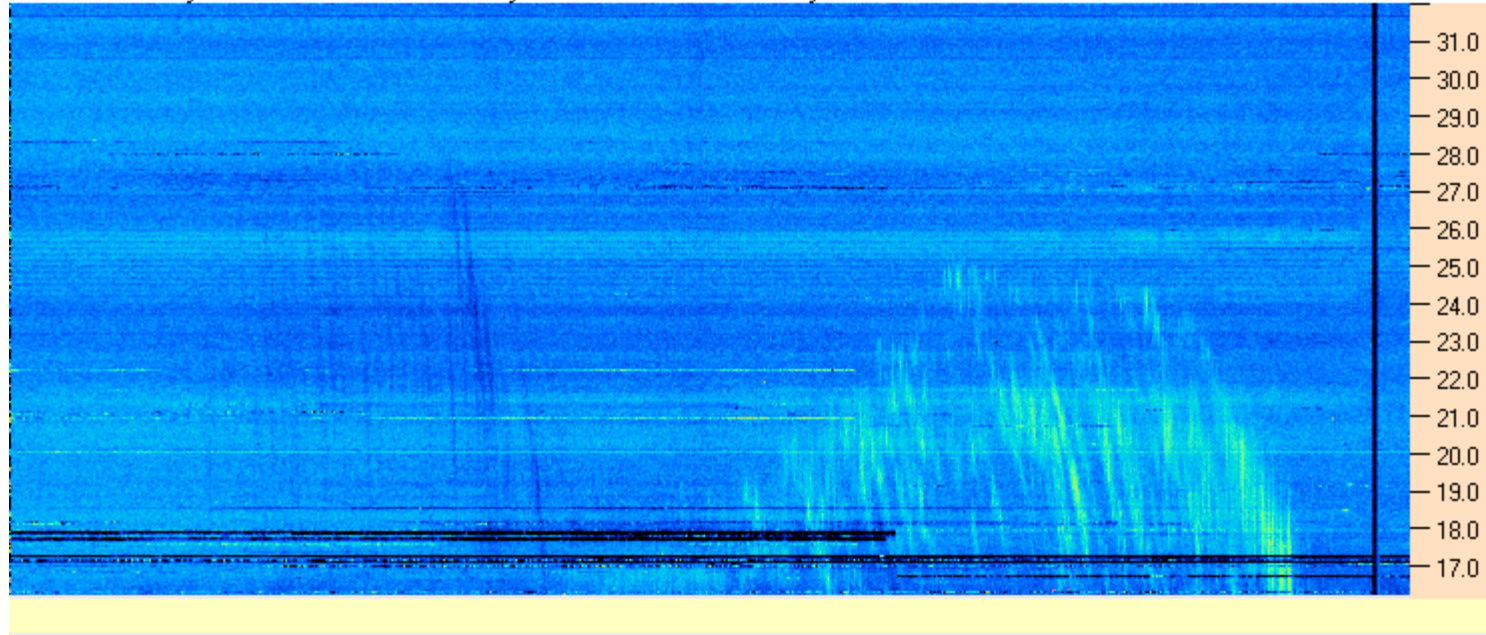
AJ4CO Observatory 04 Jul 2016 - DPS on TFD Array - LCP - Correction Array 2014 12 18 B.csv - Offset 2050 Gain 5.0



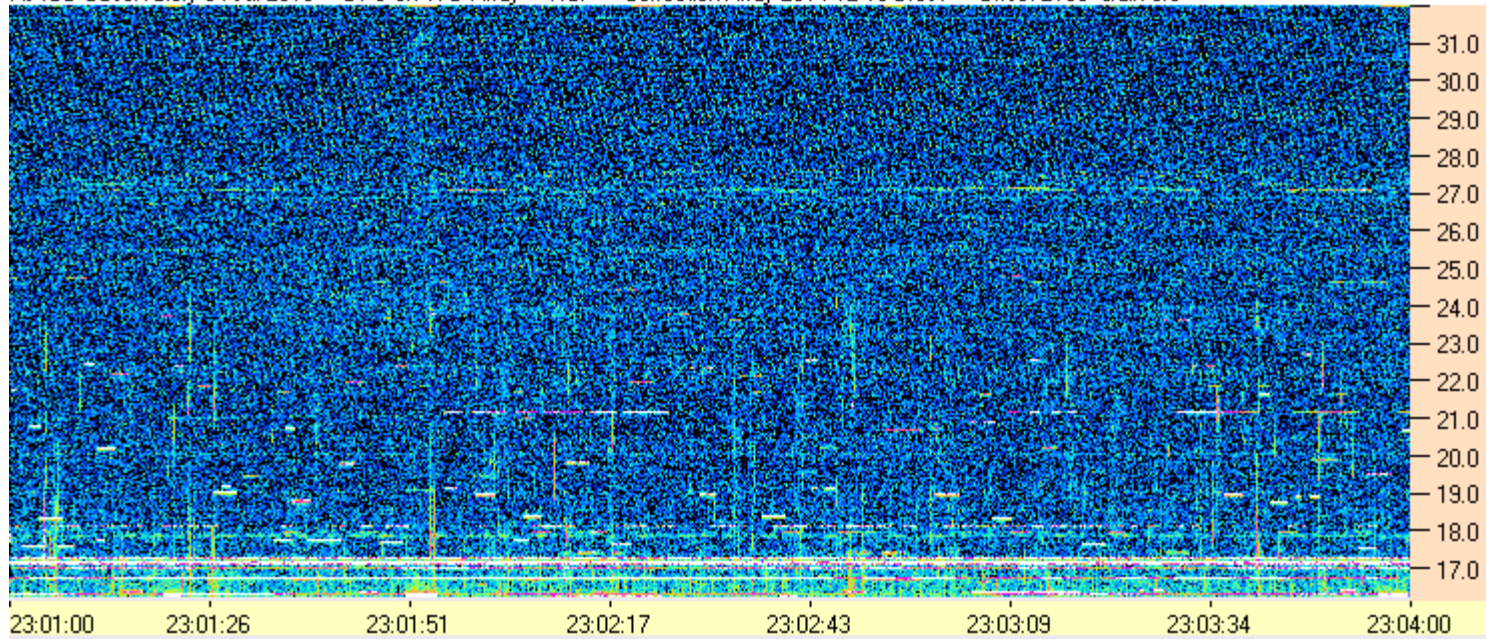
AJ4CO Observatory 04 Jul 2016 - DPS on TFD Array - RCP-LCP - Correction Array 2014 12 18 B.csv - Offset 50 Gain 2.0



AJ4CO Observatory 04 Jul 2016 - DPS on TFD Array - RCP-LCP - Correction Array 2014 12 18 B.csv - Offset 50 Gain 2.0



AJ4CO Observatory 04 Jul 2016 - DPS on TFD Array - RCP - Correction Array 2014 12 18 B.csv - Offset 2100 Gain 5.0



AJ4CO Observatory 04 Jul 2016 - DPS on TFD Array - LCP - Correction Array 2014 12 18 B.csv - Offset 2100 Gain 5.0

