

Subject: [radiojove-data] 09-10 Jun 2016 Io-A

From: Dave Typinski <davetyp@typnet.net>

Date: 06/19/2016 23:23

To: RadioJove-Data <radiojove-data@lists.nasa.gov>

Adding to Tom & Nathan's nice reports, here's some Io-A from 6/9-6/10.

RCP dominant L bursting 2354-0045 UTC from 16 to 31 MHz, negative drift emission envelopes.

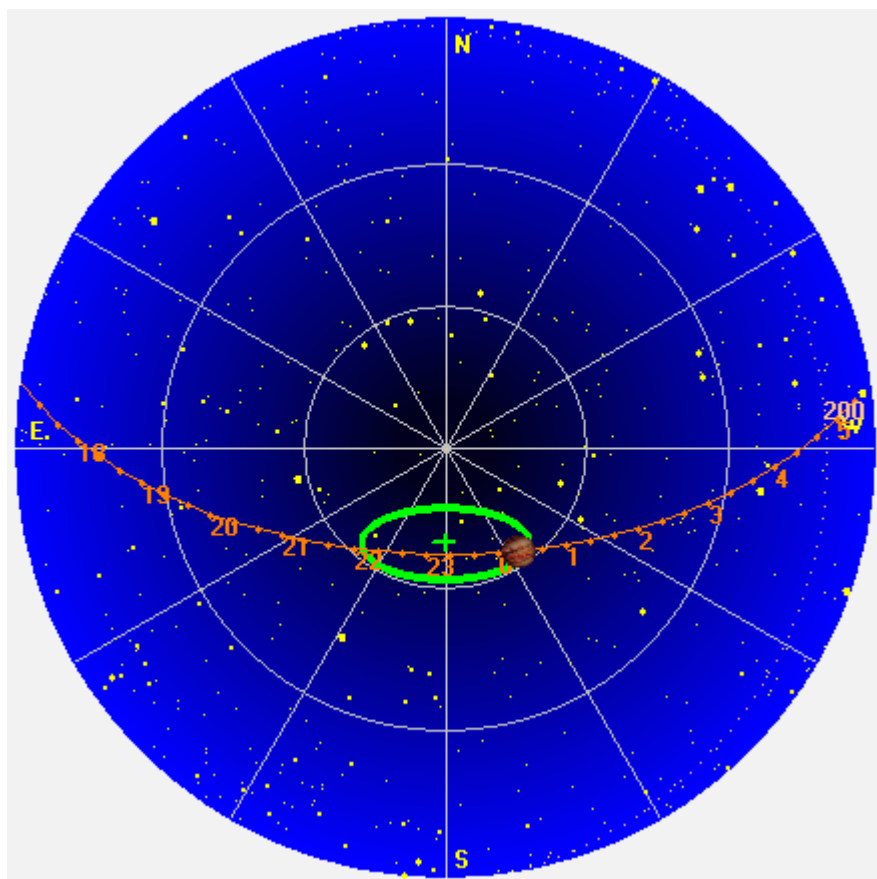
Jupiter was $+8^\circ$ to $+21^\circ$ off axis.

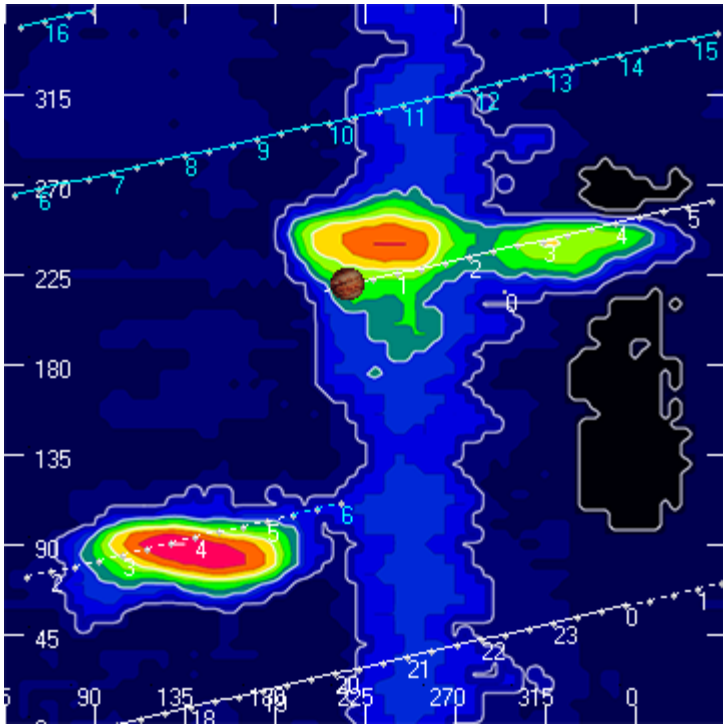
Jupiter was trailing the Sun by 85° .

--

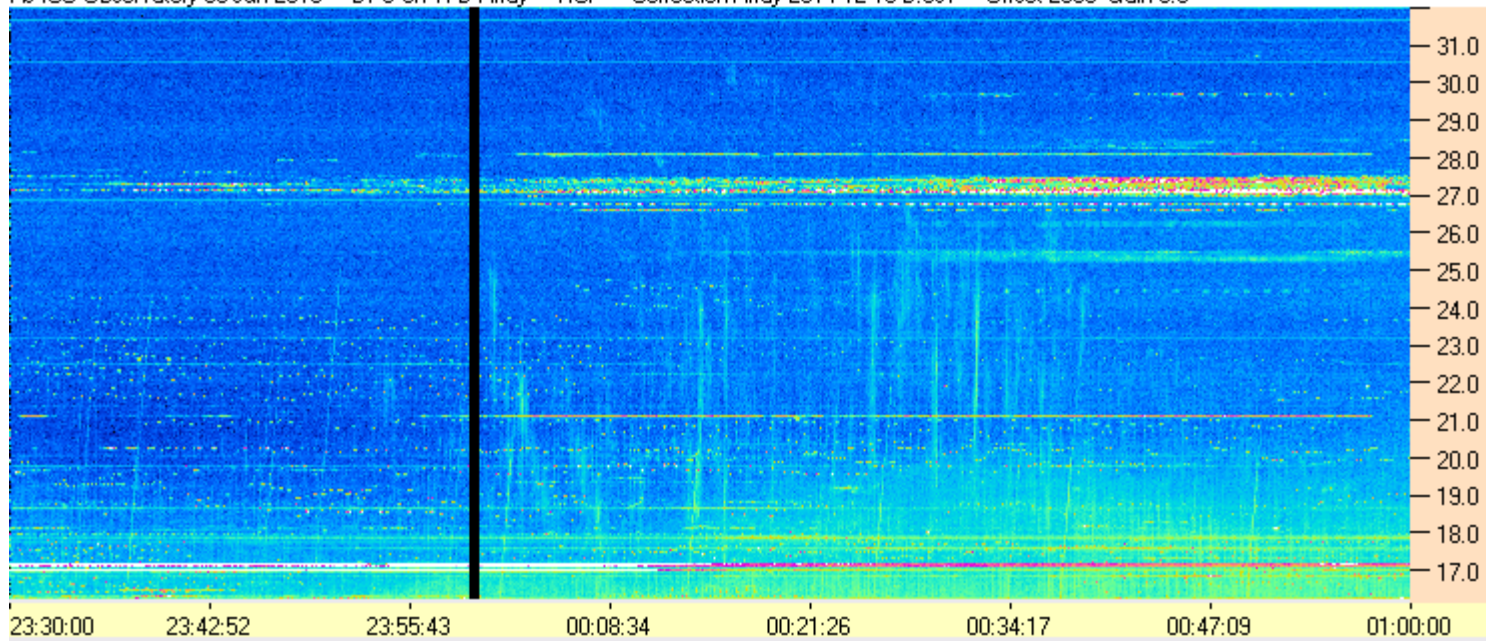
Dave

AJ4CO Observatory 09-10 Jun 2016, log entry 724

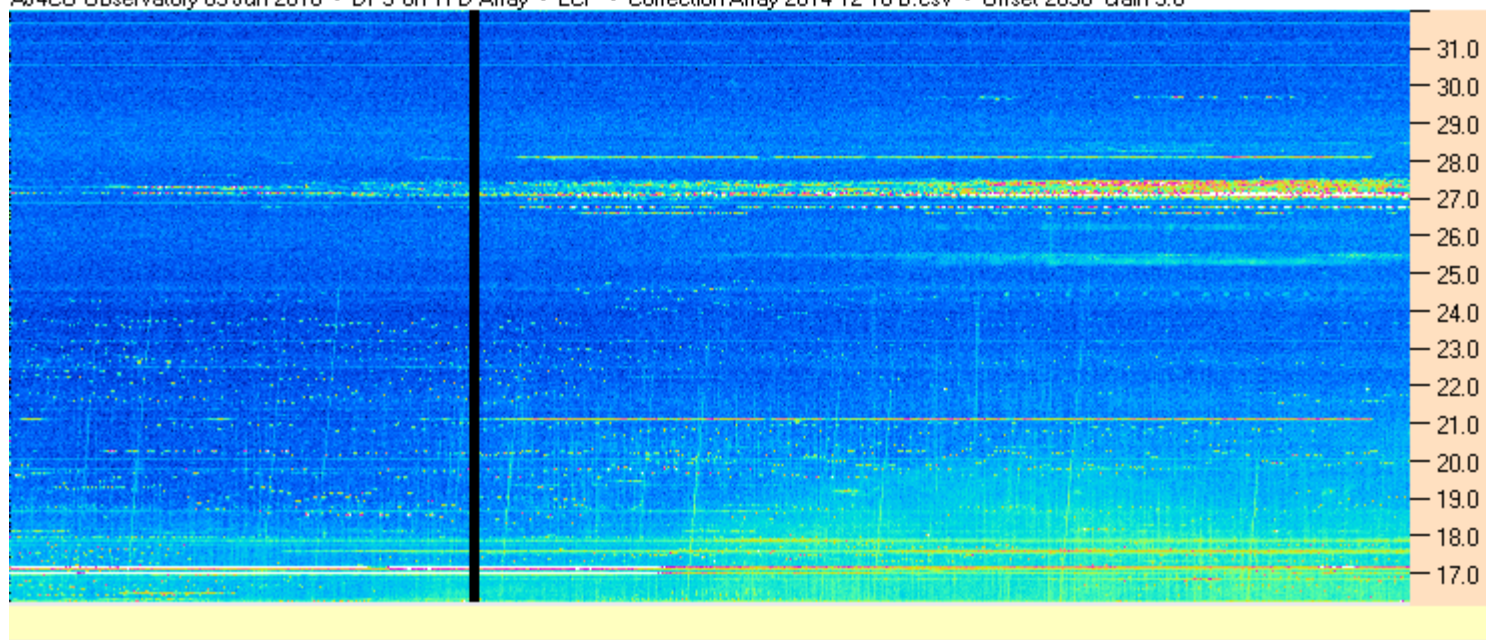




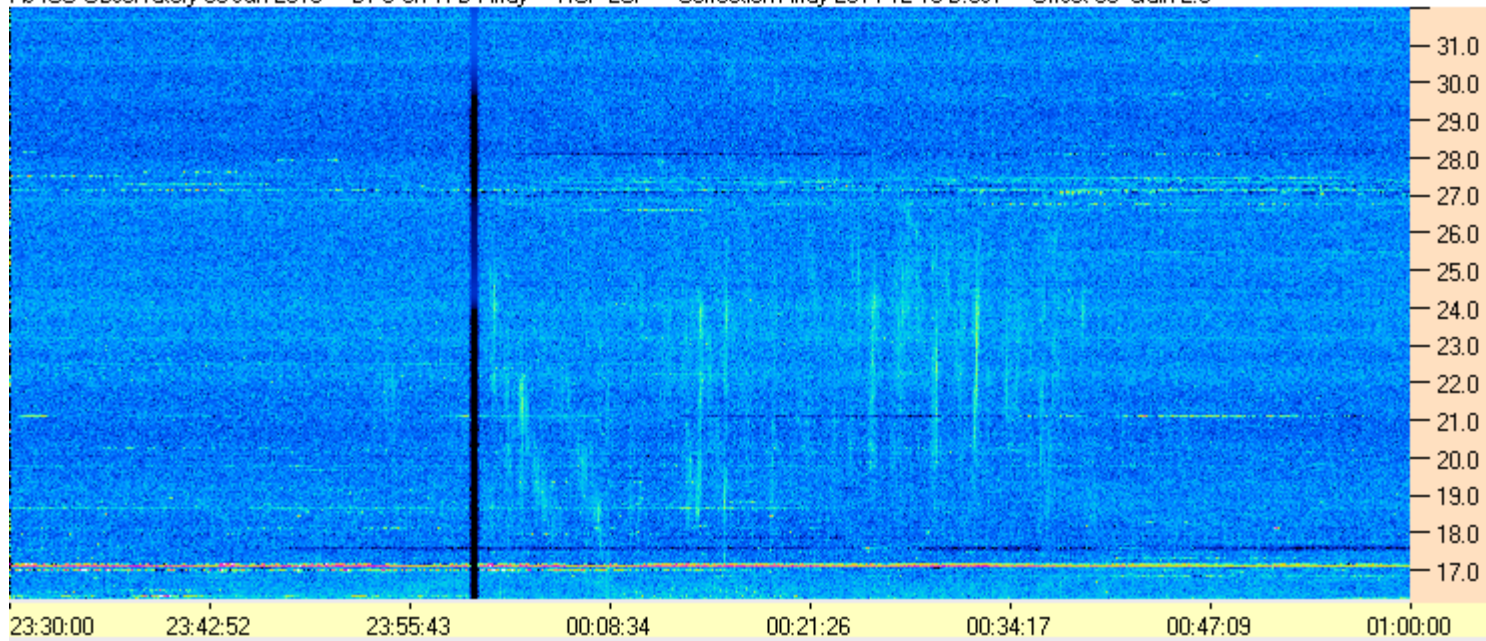
AJ4CO Observatory 09 Jun 2016 - DPS on TFD Array - RCP - Correction Array 2014 12 18 B.csv - Offset 2050 Gain 5.0



AJ4CO Observatory 09 Jun 2016 - DPS on TFD Array - LCP - Correction Array 2014 12 18 B.csv - Offset 2050 Gain 5.0



AJ4CO Observatory 09 Jun 2016 - DPS on TFD Array - RCP-LCP - Correction Array 2014 12 18 B.csv - Offset 50 Gain 2.0



AJ4CO Observatory 09 Jun 2016 - DPS on TFD Array - LCP-RCP - Correction Array 2014 12 18 B.csv - Offset 50 Gain 2.0

