

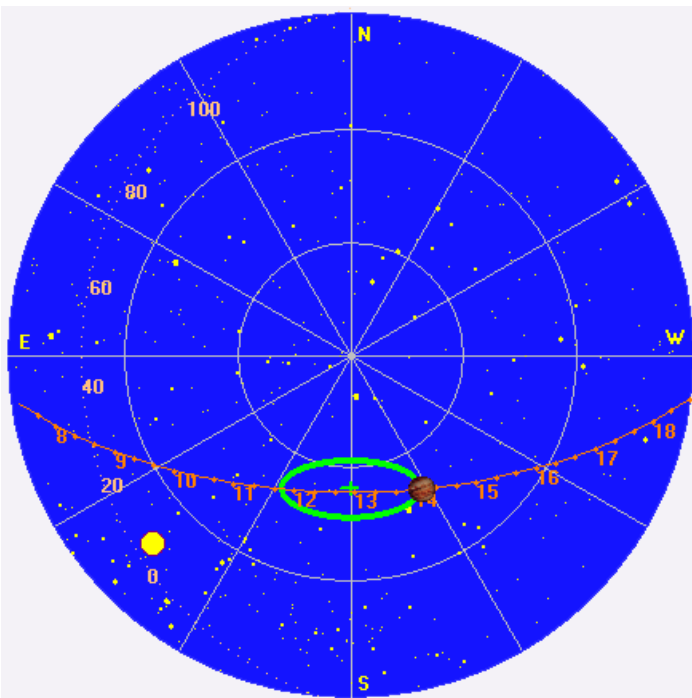
Some weak Io-B.

RCP dominant L bursting 1252–1520 UTC from 16 to 31 MHz, positive frequency drift emission envelopes.

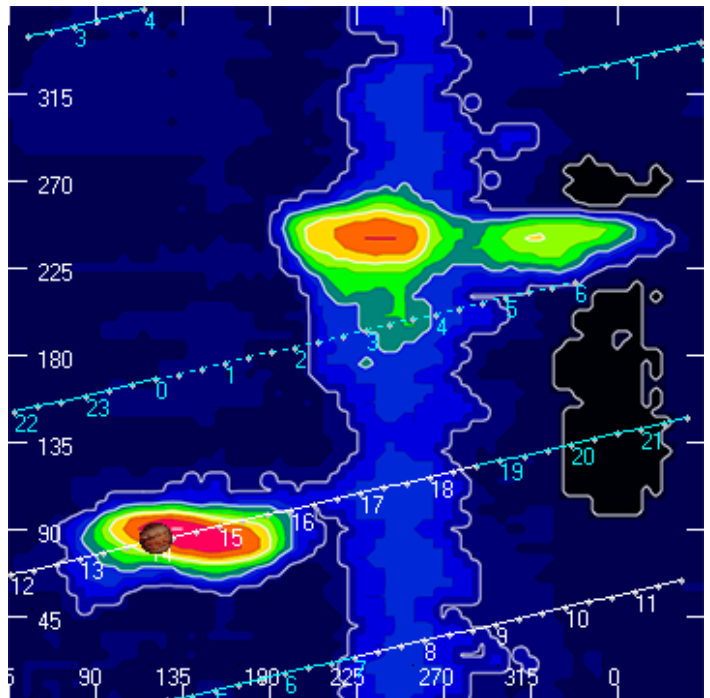
Jupiter was  $-11^\circ$  to  $+37^\circ$  off axis.

Jupiter was leading the Sun by  $67^\circ$ .

Jupiter's location at midpoint of observed emission (1406 UTC)

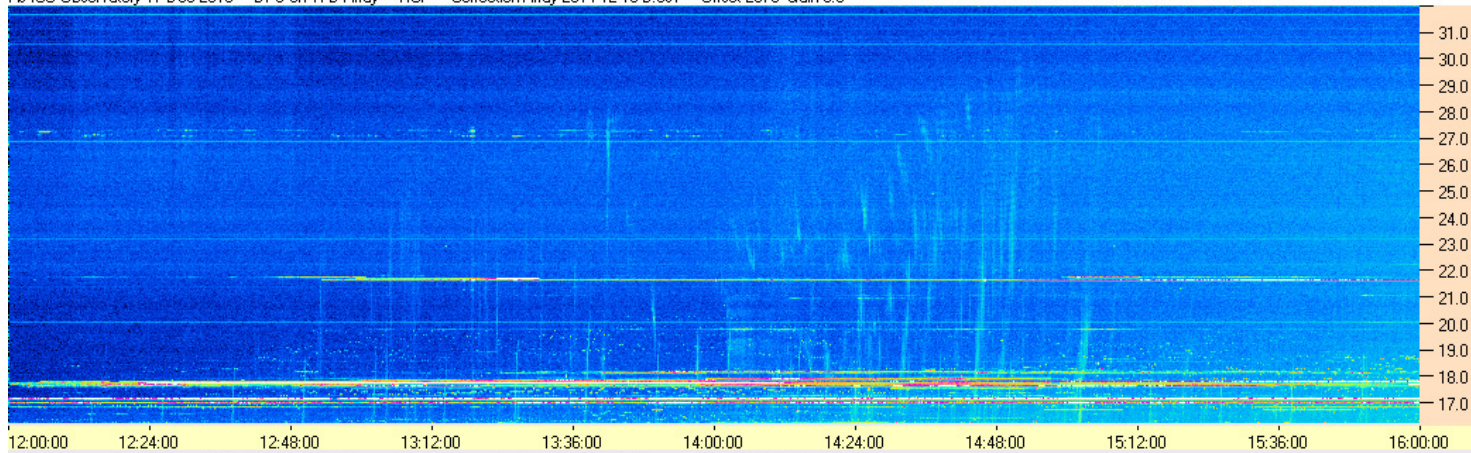


Sky map with array HPBW in green.

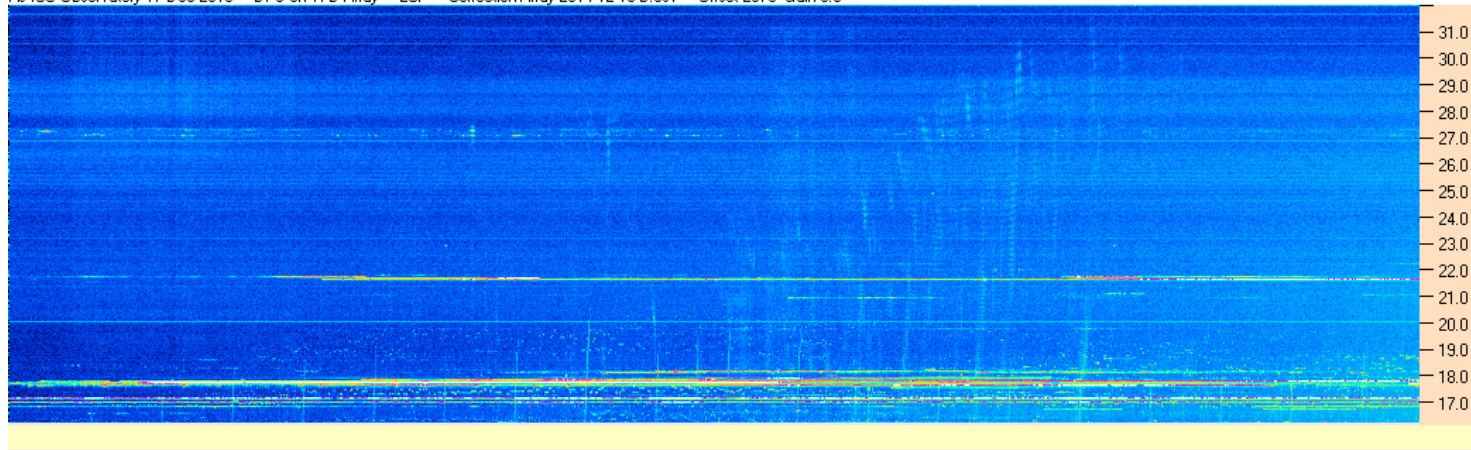


CML-Io phase plane.

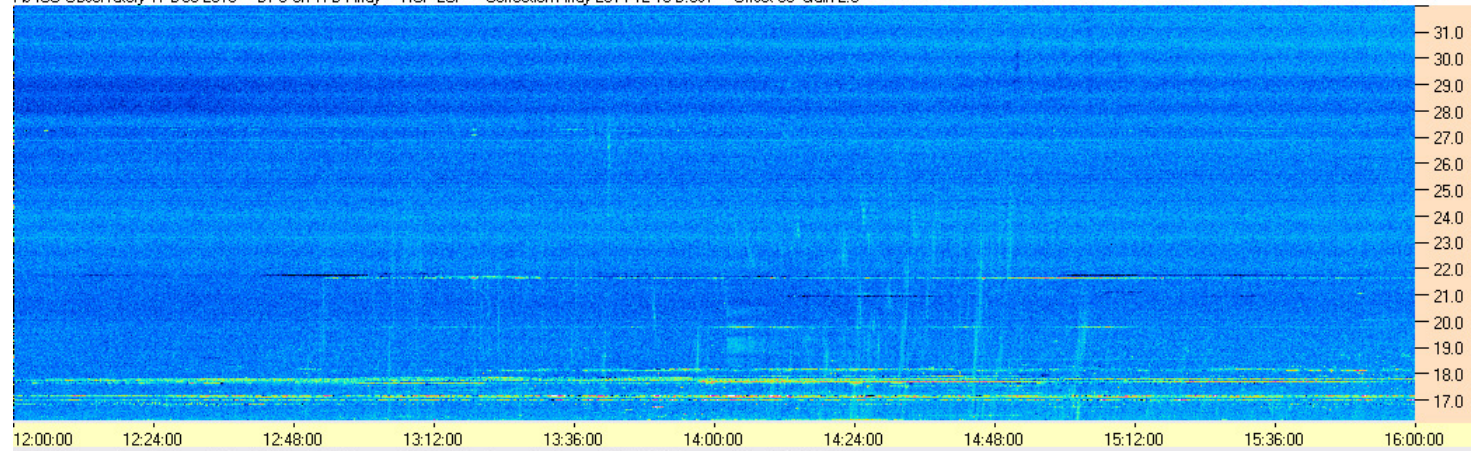
AJ4CO Observatory 17 Dec 2016 - DPS on TFD Array - RCP - Correction Array 2014 12 18 B.csv - Offset 2075 Gain 5.0



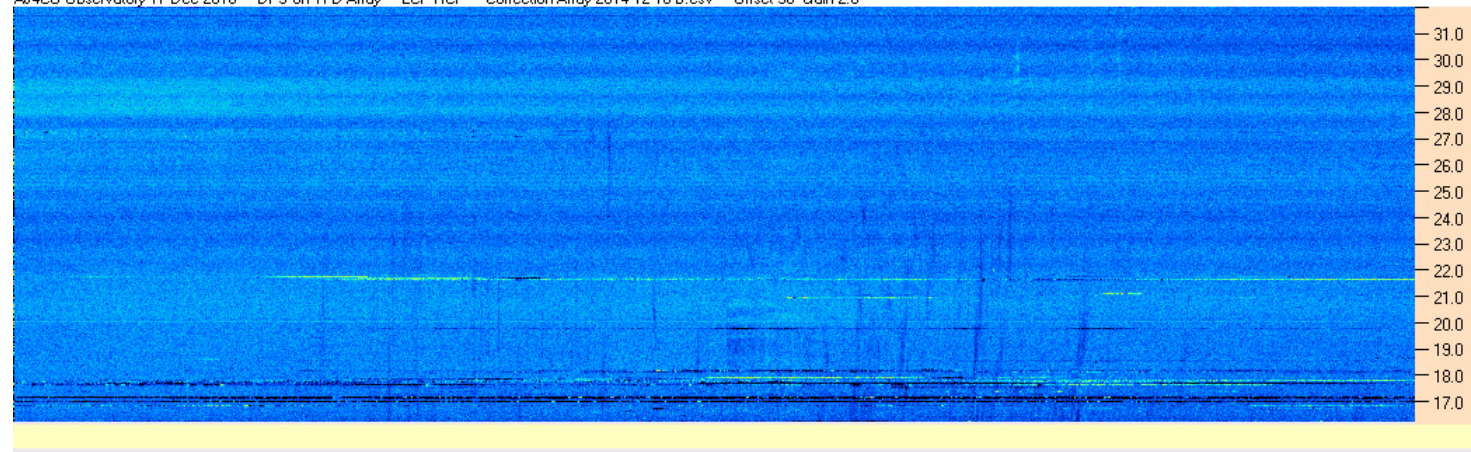
AJ4CO Observatory 17 Dec 2016 - DPS on TFD Array - LCP - Correction Array 2014 12 18 B.csv - Offset 2075 Gain 5.0

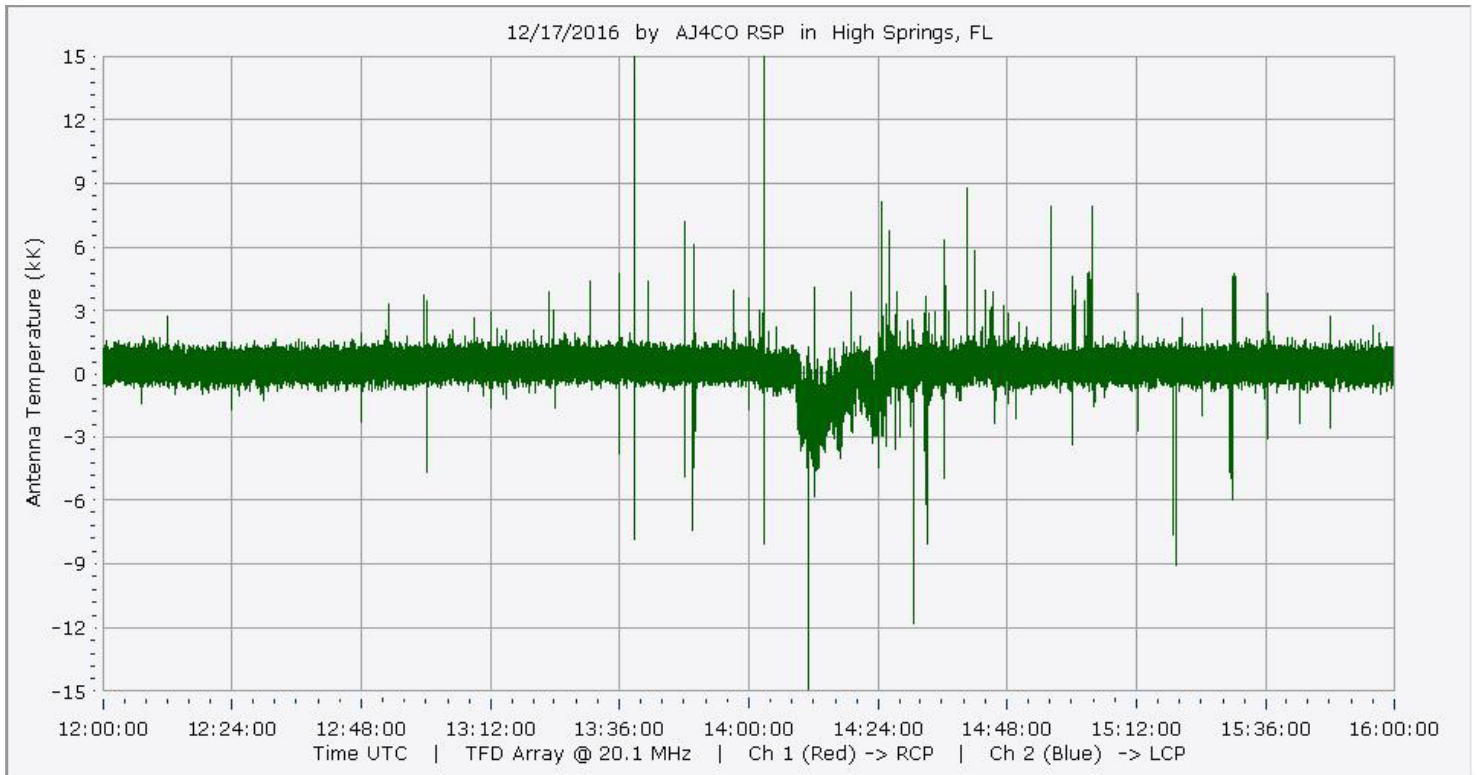
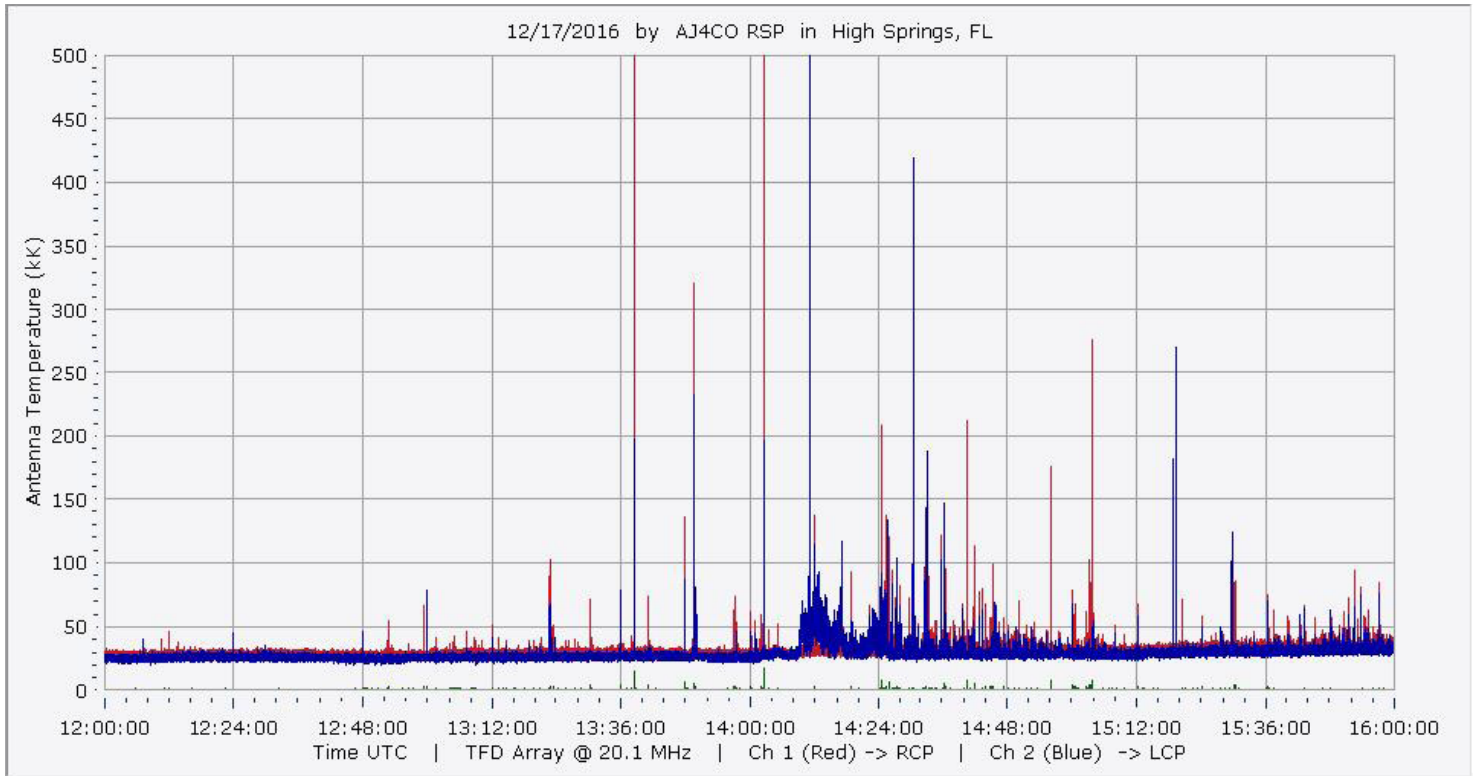


AJ4CO Observatory 17 Dec 2016 - DPS on TFD Array - RCP-LCP - Correction Array 2014 12 18 B.csv - Offset 50 Gain 2.0

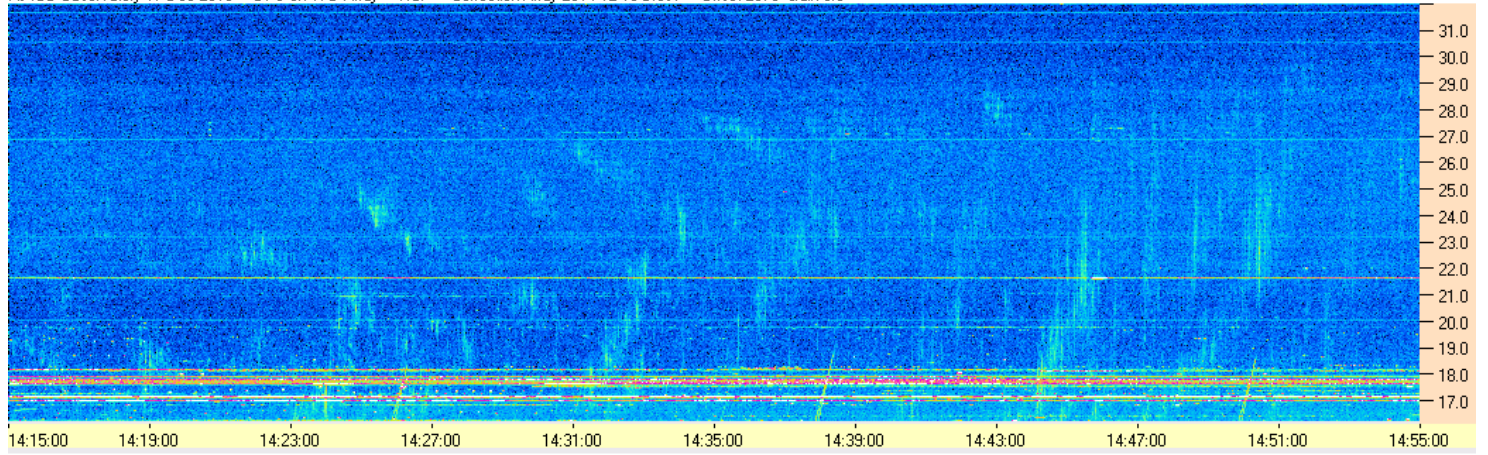


AJ4CO Observatory 17 Dec 2016 - DPS on TFD Array - LCP-RCP - Correction Array 2014 12 18 B.csv - Offset 50 Gain 2.0

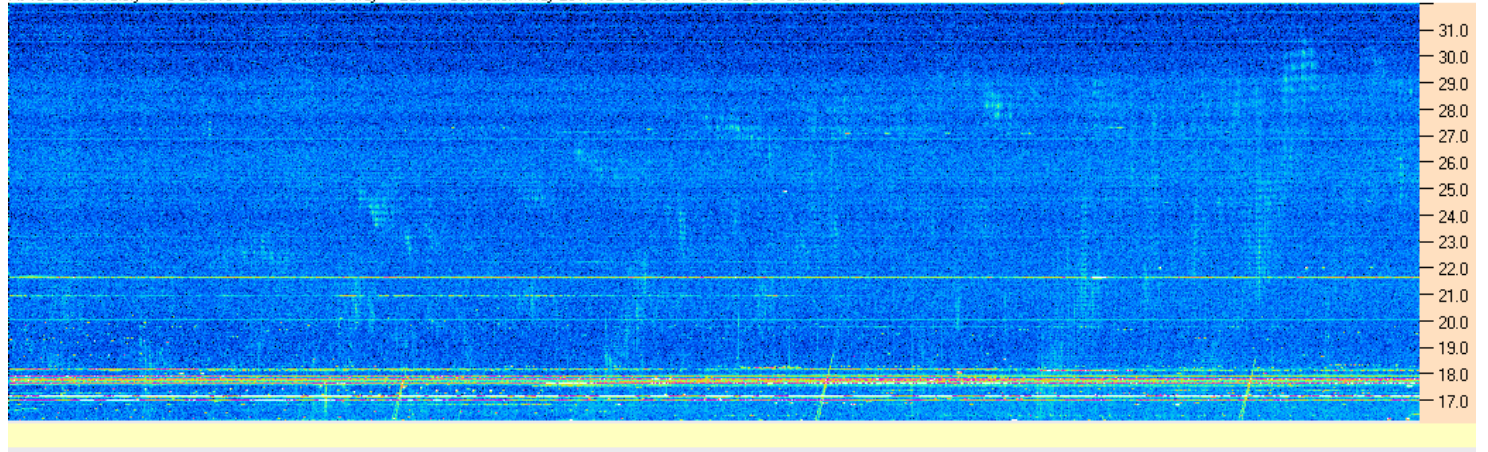




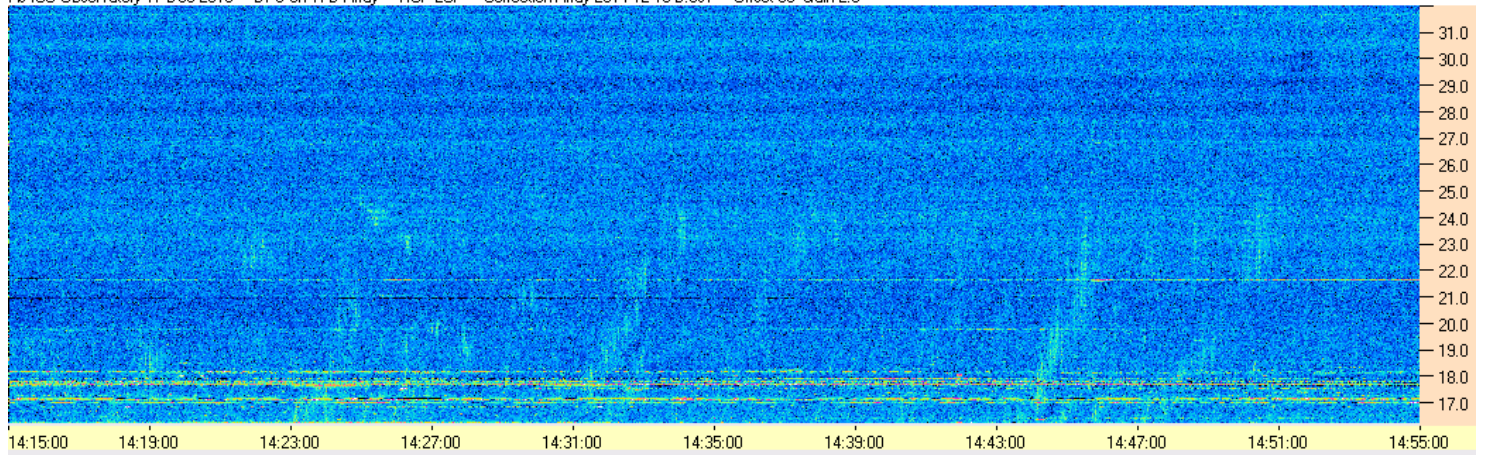
AJ4CO Observatory 17 Dec 2016 - DPS on TFD Array - RCP - Correction Array 2014 12 18 B.csv - Offset 2075 Gain 5.0



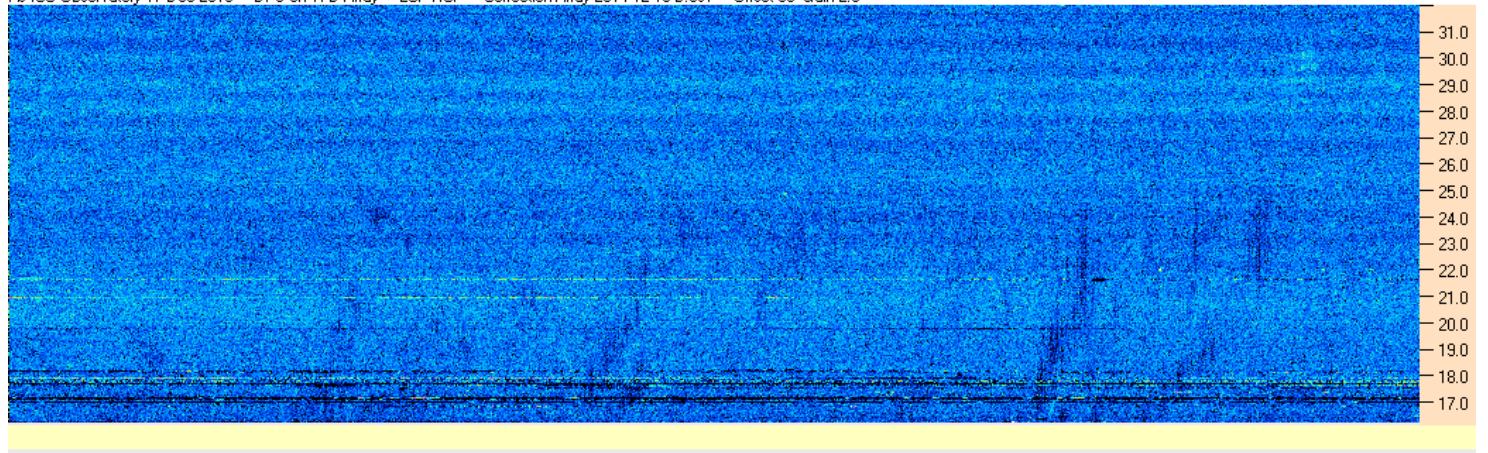
AJ4CO Observatory 17 Dec 2016 - DPS on TFD Array - LCP - Correction Array 2014 12 18 B.csv - Offset 2075 Gain 5.0

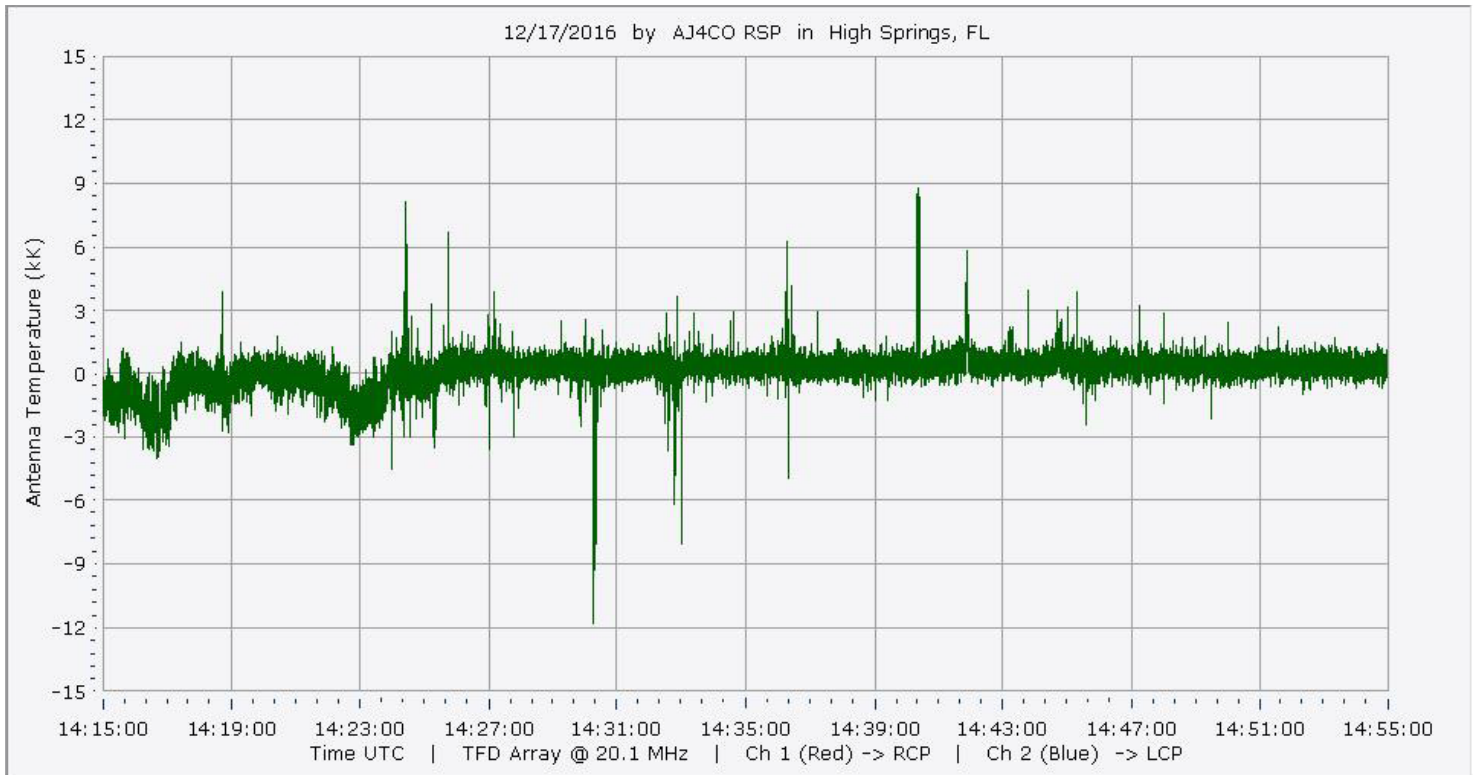
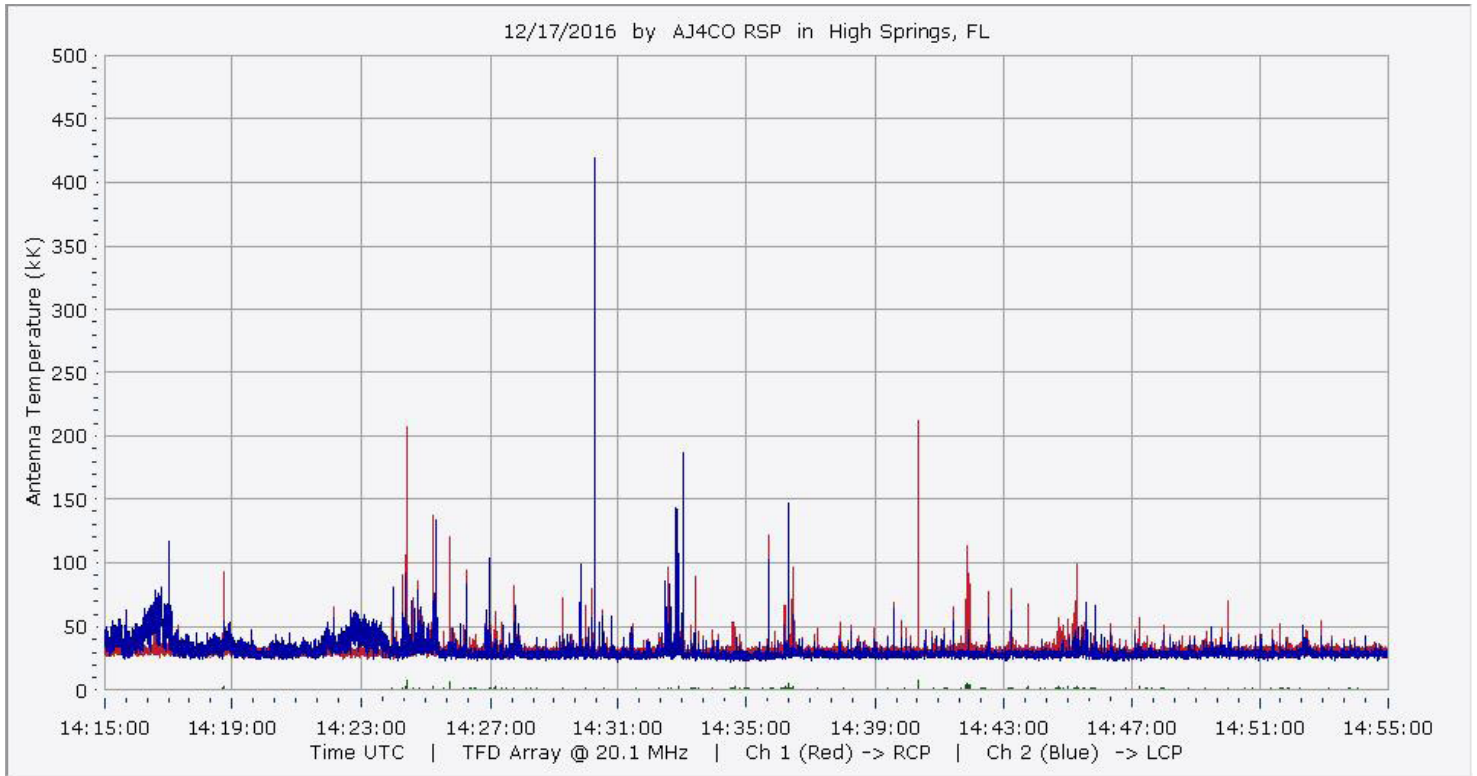


AJ4CO Observatory 17 Dec 2016 - DPS on TFD Array - RCP-LCP - Correction Array 2014 12 18 B.csv - Offset 50 Gain 2.0

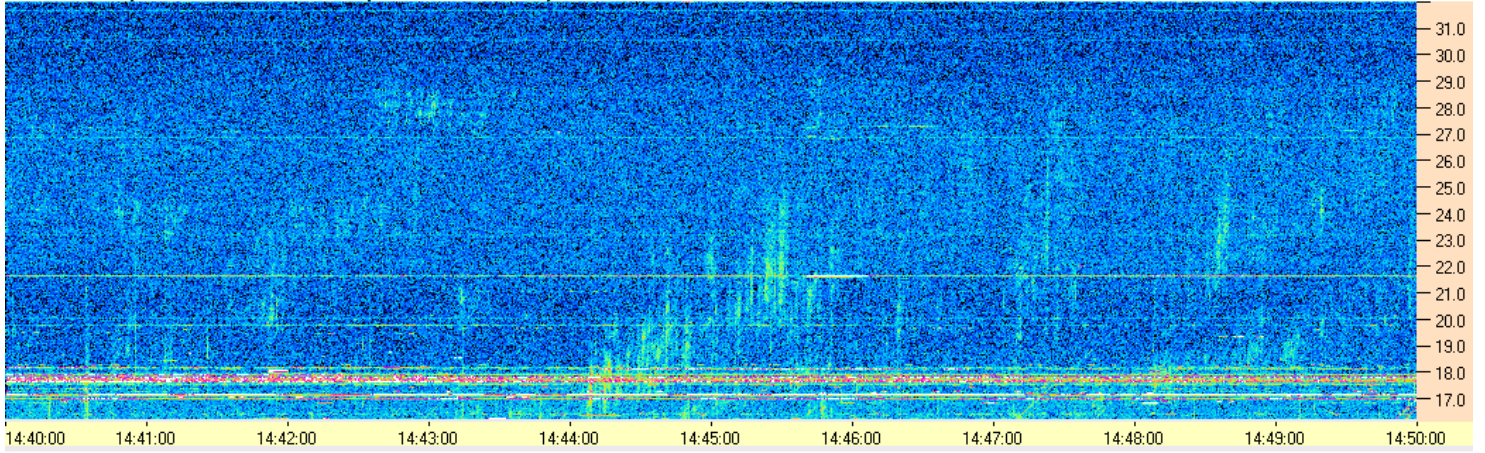


AJ4CO Observatory 17 Dec 2016 - DPS on TFD Array - LCP-RCP - Correction Array 2014 12 18 B.csv - Offset 50 Gain 2.0

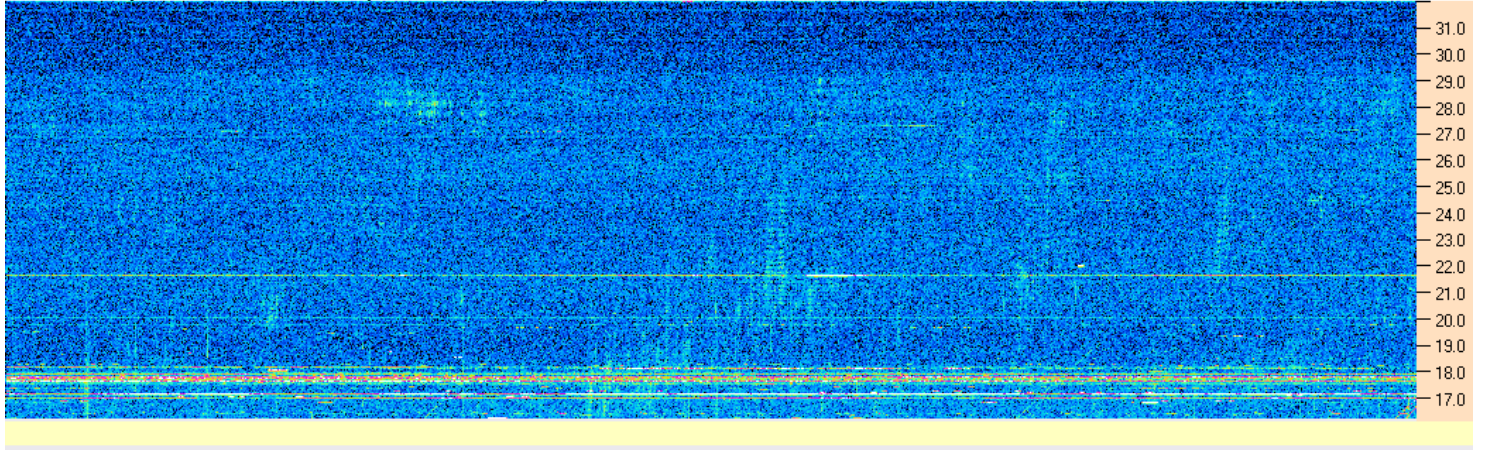




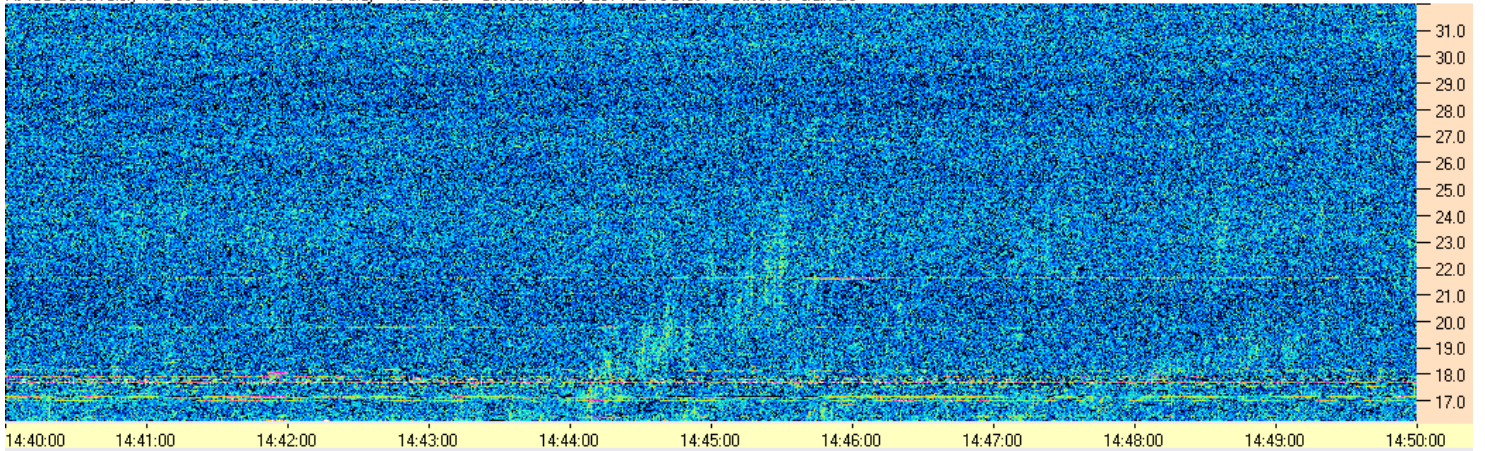
AJ4CO Observatory 17 Dec 2016 - DPS on TFD Array - RCP - Correction Array 2014 12 18 B.csv - Offset 2075 Gain 5.0



AJ4CO Observatory 17 Dec 2016 - DPS on TFD Array - LCP - Correction Array 2014 12 18 B.csv - Offset 2075 Gain 5.0



AJ4CO Observatory 17 Dec 2016 - DPS on TFD Array - RCP-LCP - Correction Array 2014 12 18 B.csv - Offset 50 Gain 2.0



AJ4CO Observatory 17 Dec 2016 - DPS on TFD Array - LCP-RCP - Correction Array 2014 12 18 B.csv - Offset 50 Gain 2.0

