

Good Io-B.

A bunch of weak S bursting arc early on, followed by L bursting in the classic main Io-B arc.

A couple bouts of weak line noise.

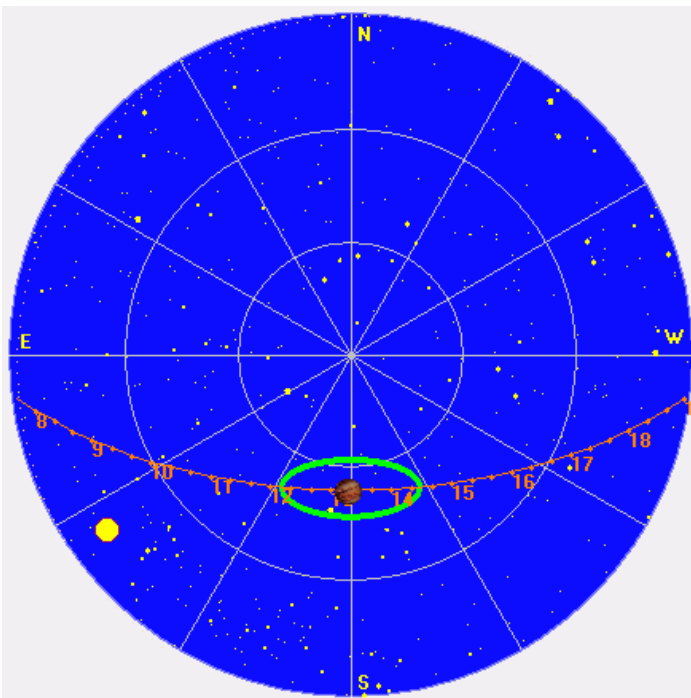
RCP dominant S bursting 1214–1321 UTC from 16 to 32 MHz, vertex early arcs.

RCP dominant L bursting 1316–1422 UTC from 16 to 32 MHz, vertex early arcs.

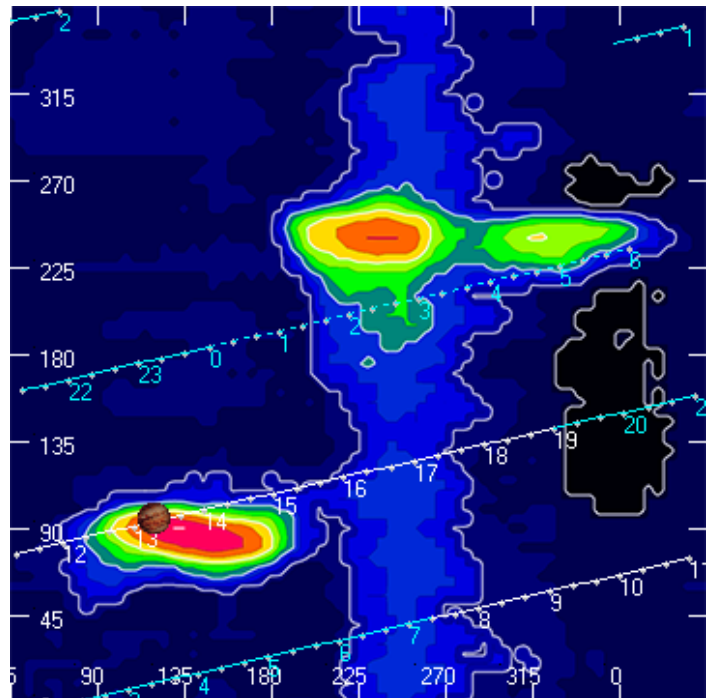
Jupiter was -20° to $+19^\circ$ off axis.

Jupiter was leading the Sun by 61° .

Jupiter's location at midpoint of observed emission (1318 UTC)

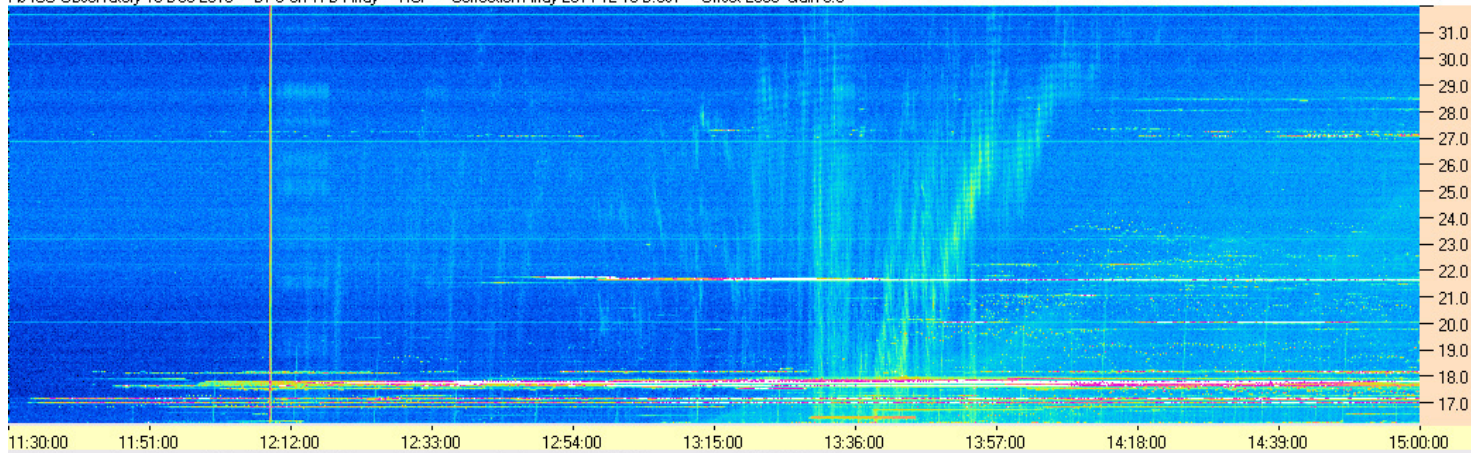


Sky map with array HPBW in green.

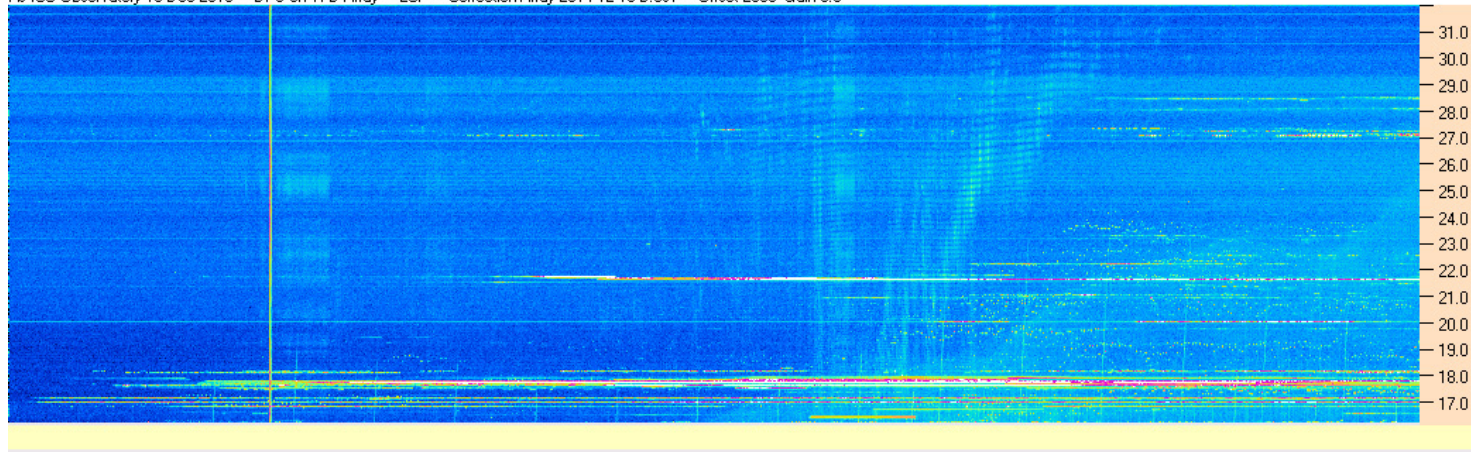


CML-Io phase plane.

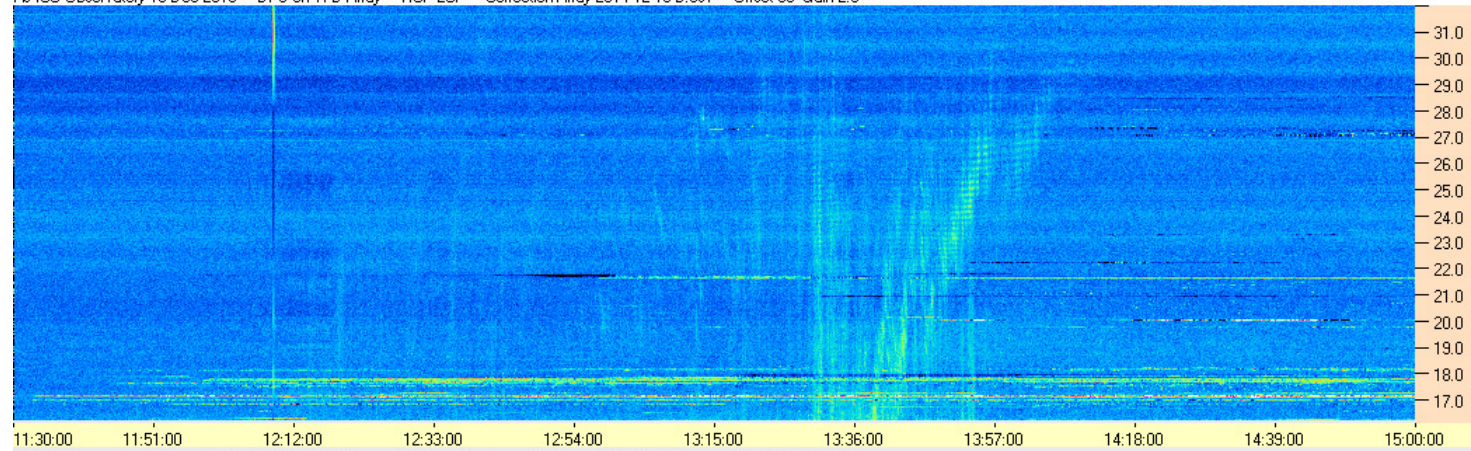
AJ4CO Observatory 10 Dec 2016 - DPS on TFD Array - RCP - Correction Array 2014 12 18 B.csv - Offset 2050 Gain 5.0



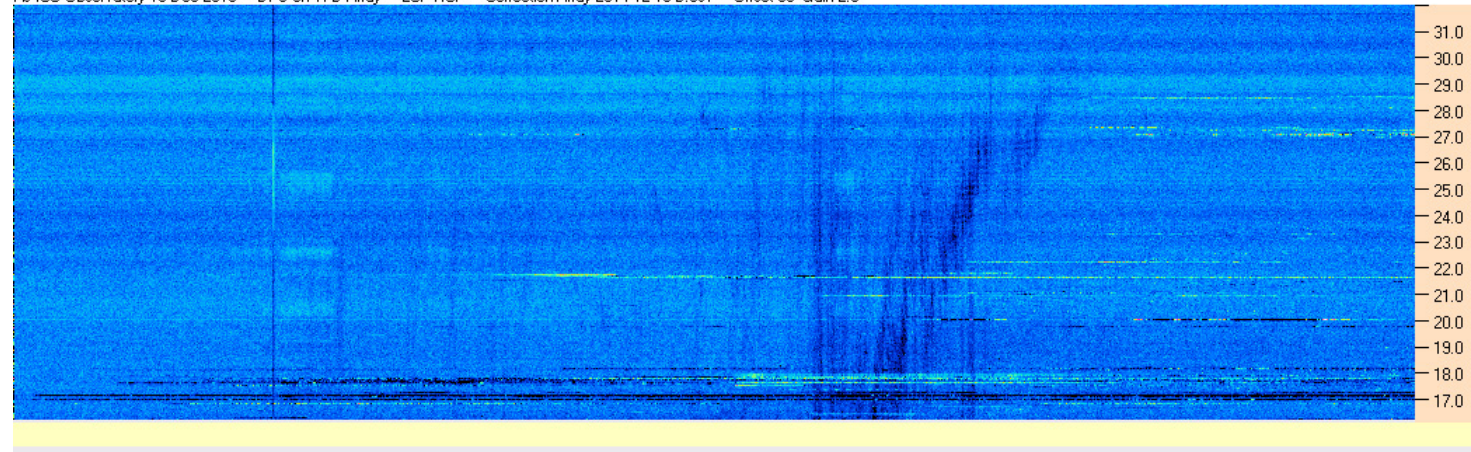
AJ4CO Observatory 10 Dec 2016 - DPS on TFD Array - LCP - Correction Array 2014 12 18 B.csv - Offset 2050 Gain 5.0

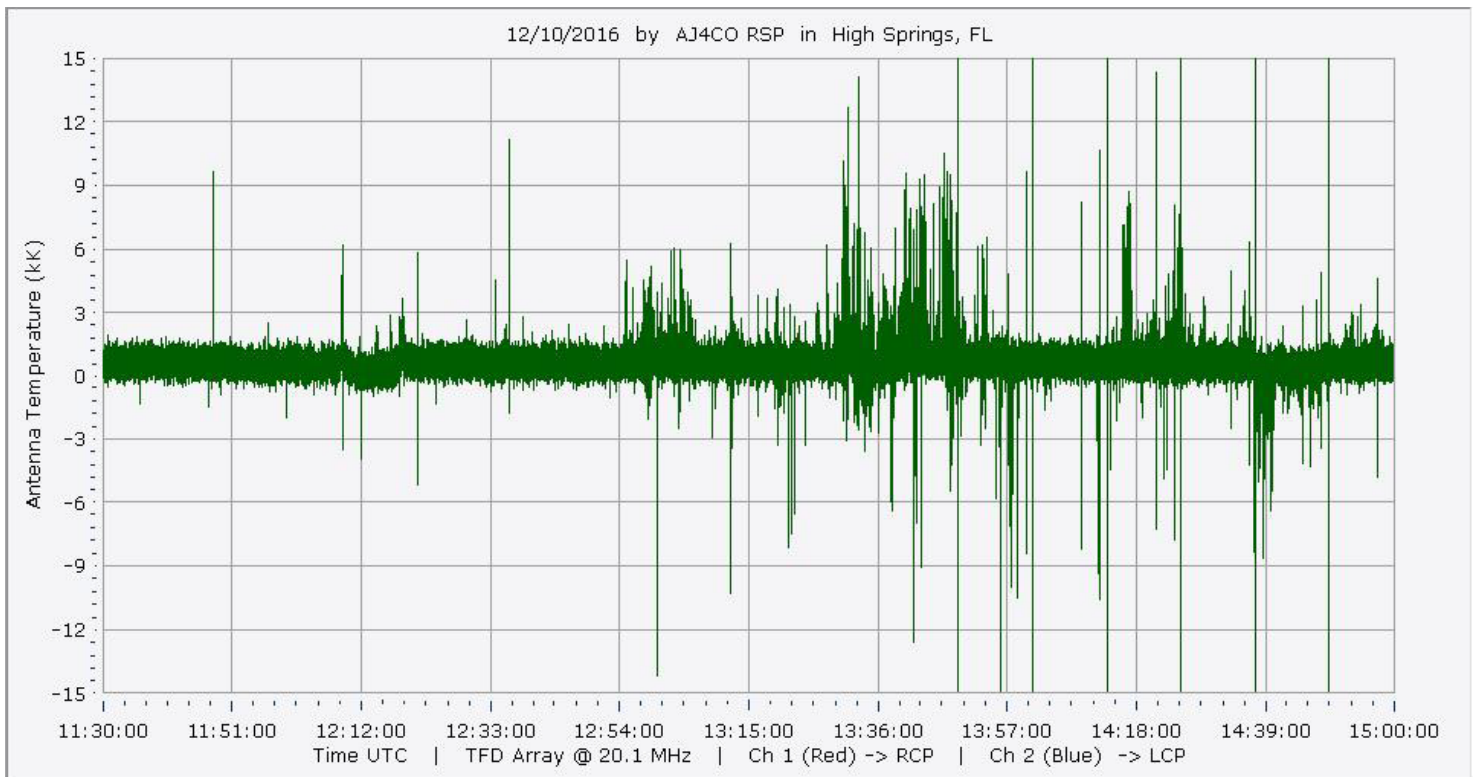
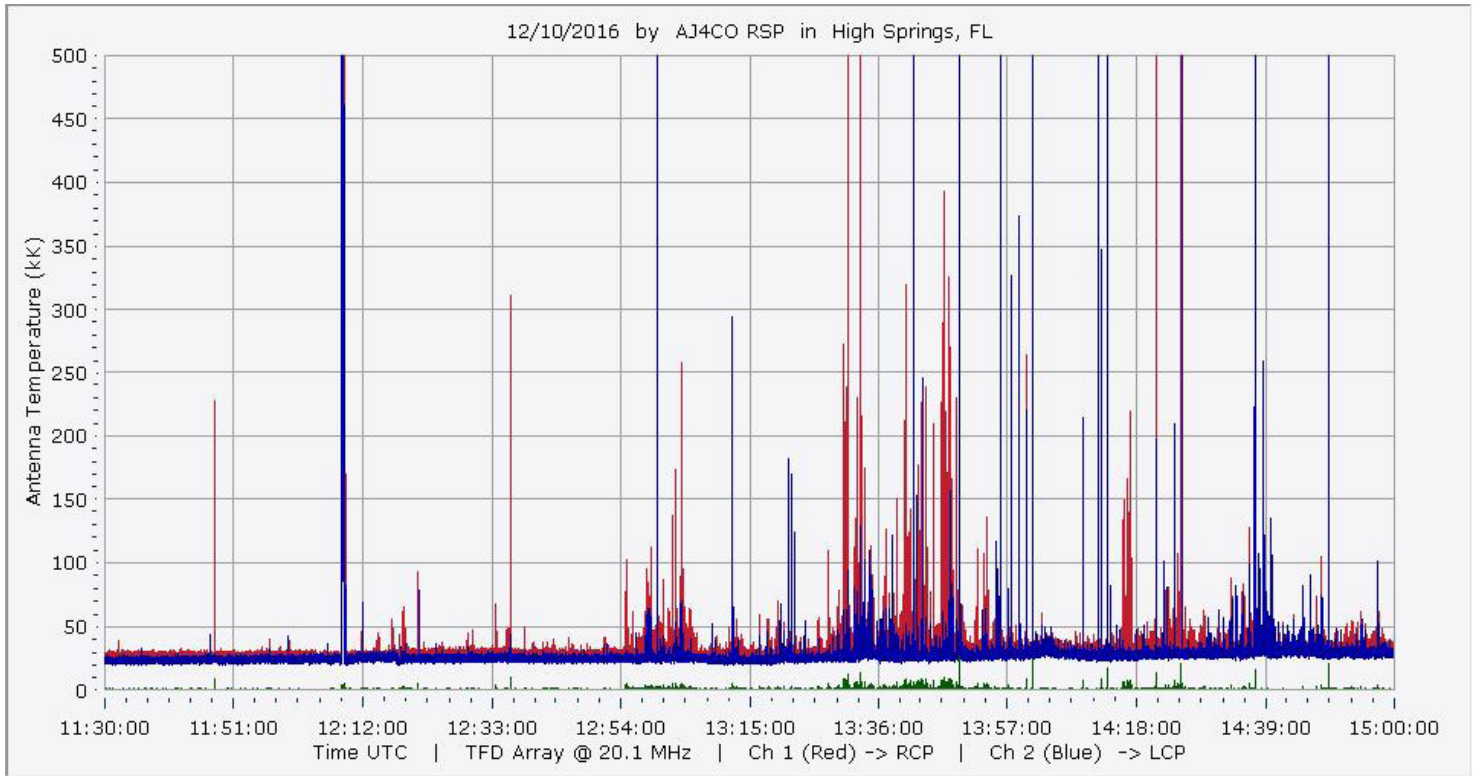


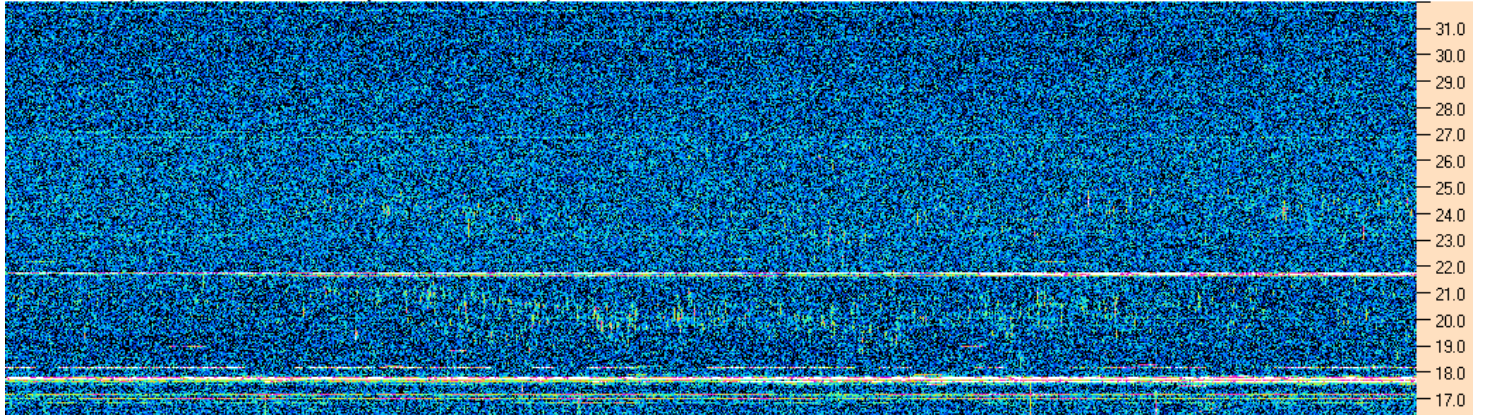
AJ4CO Observatory 10 Dec 2016 - DPS on TFD Array - RCP-LCP - Correction Array 2014 12 18 B.csv - Offset 50 Gain 2.0



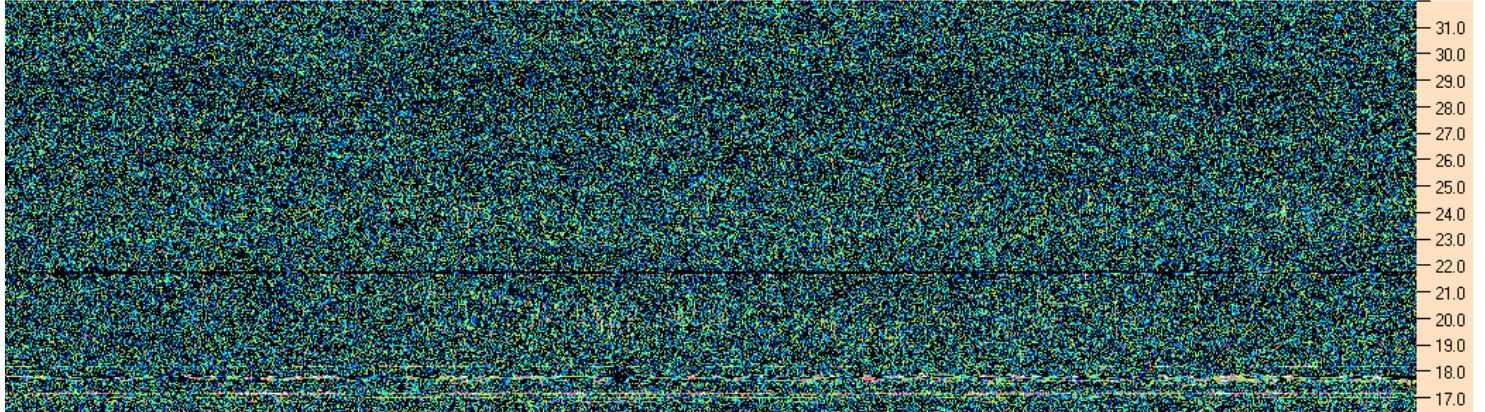
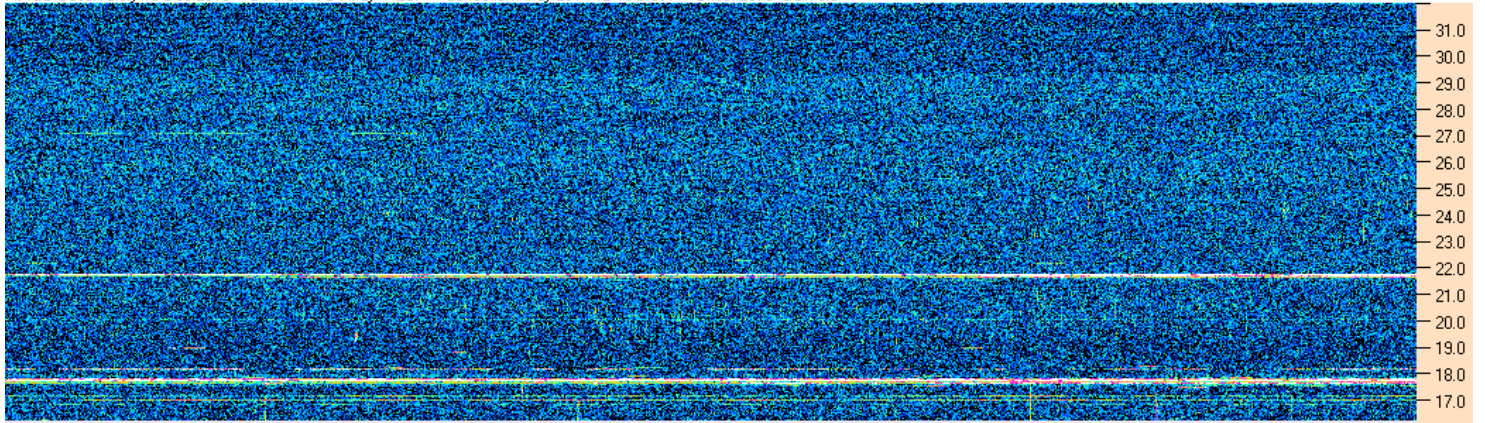
AJ4CO Observatory 10 Dec 2016 - DPS on TFD Array - LCP-RCP - Correction Array 2014 12 18 B.csv - Offset 50 Gain 2.0



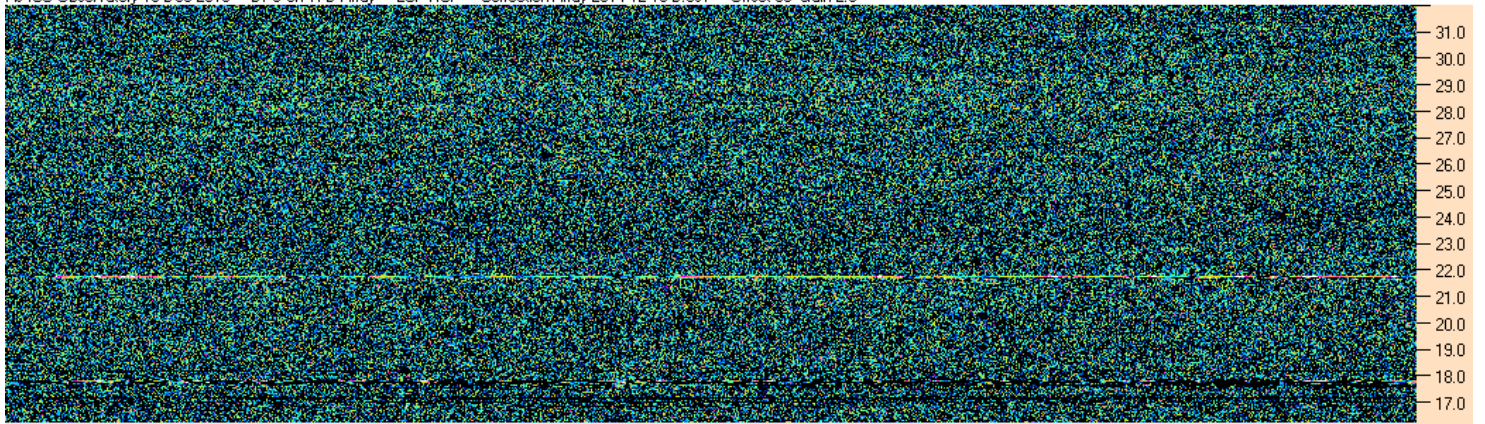


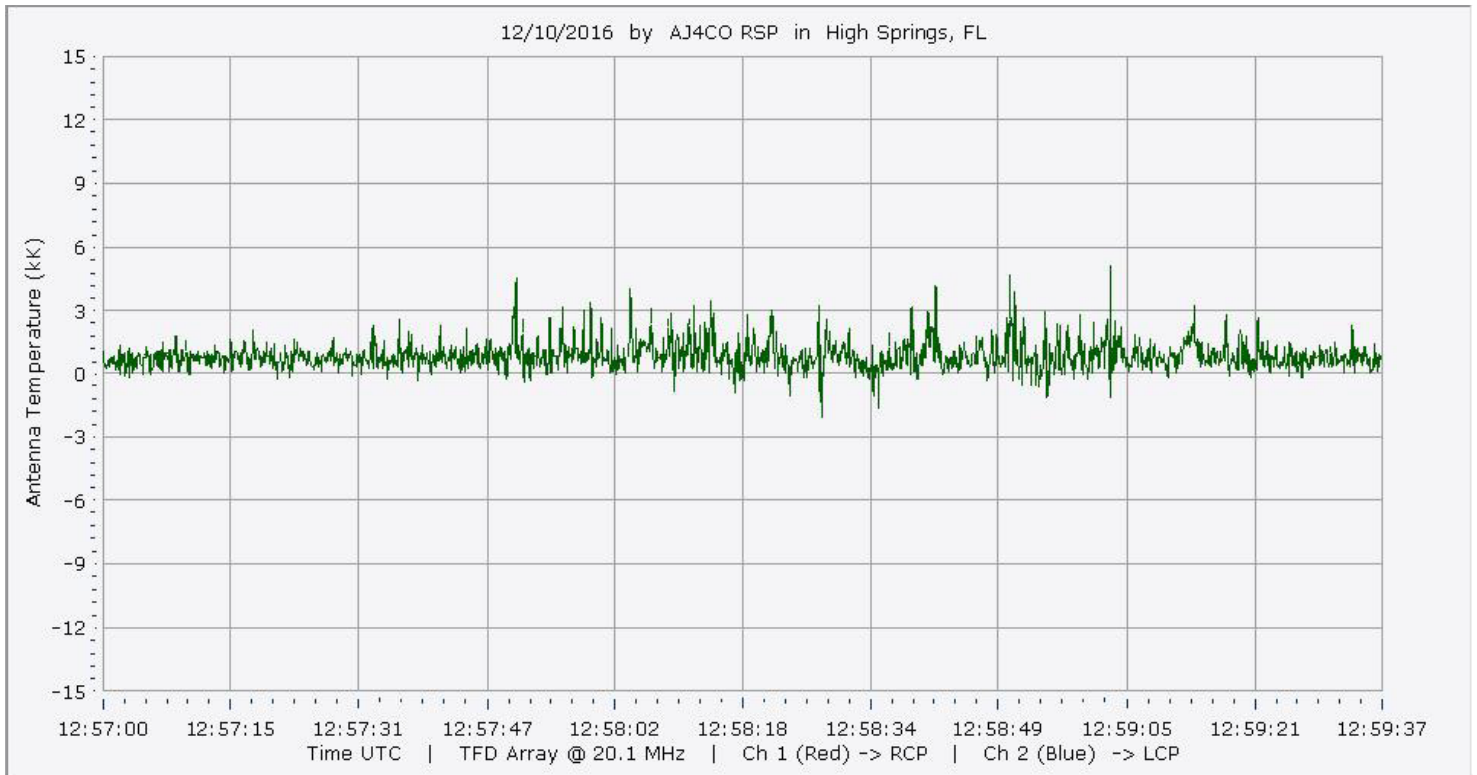
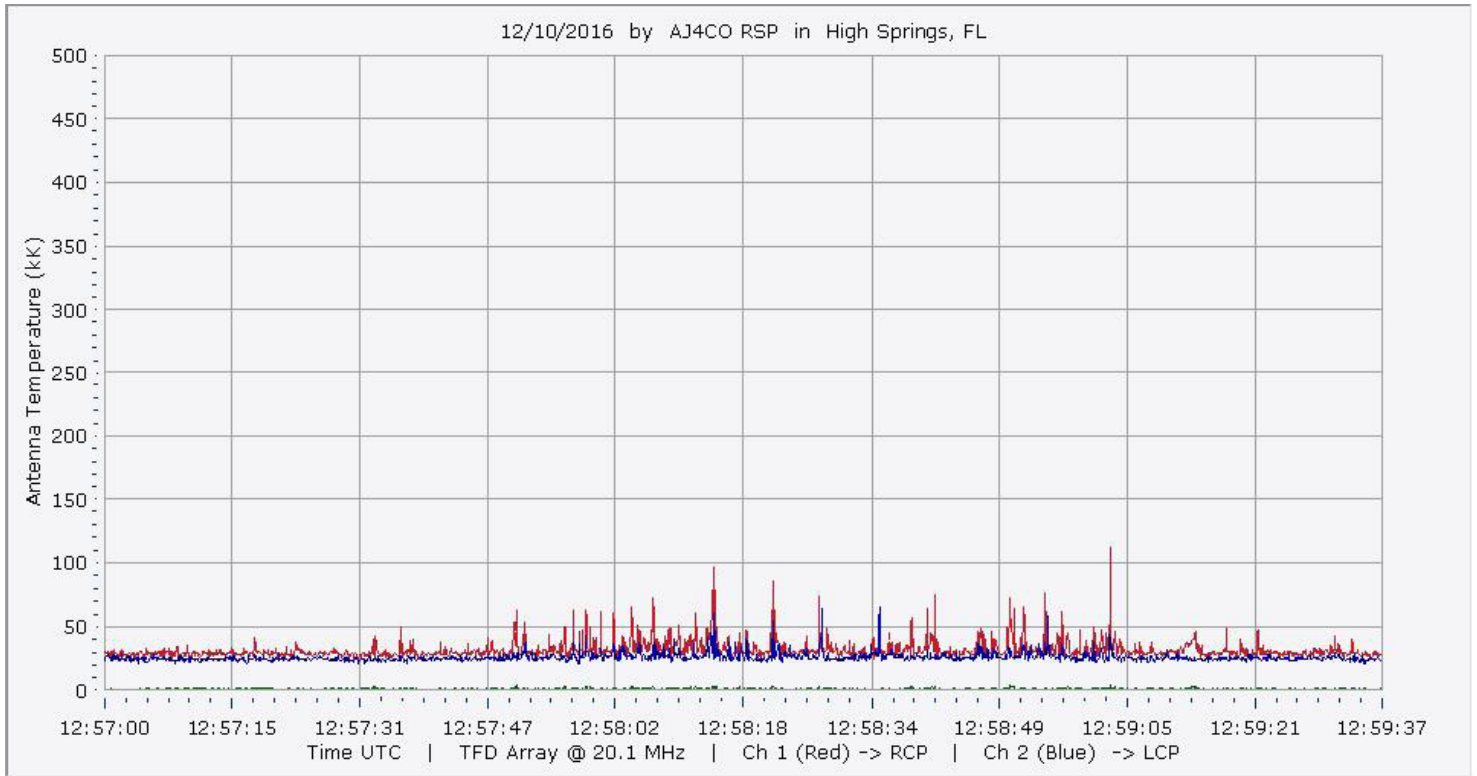


12:57:00 12:57:16 12:57:31 12:57:47 12:58:03 12:58:19 12:58:34 12:58:50 12:59:06 12:59:21 12:59:37
AJ4CO Observatory 10 Dec 2016 - DPS on TFD Array - LCP - Correction Array 2014 12 18 B.csv - Offset 2075 Gain 5.0

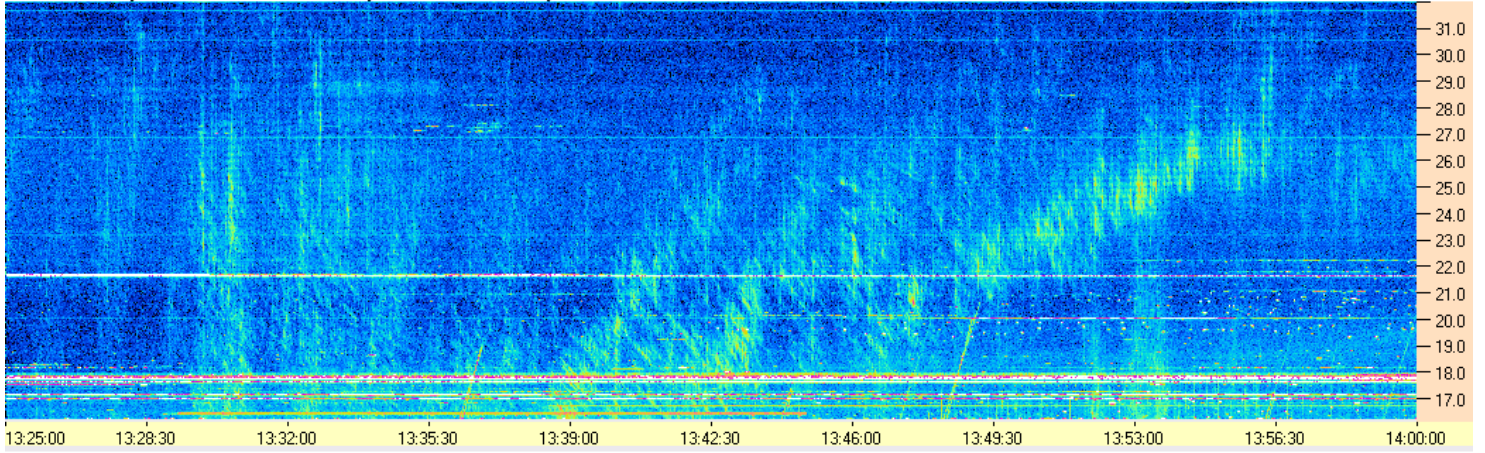


12:57:00 12:57:16 12:57:31 12:57:47 12:58:03 12:58:19 12:58:34 12:58:50 12:59:06 12:59:21 12:59:37
AJ4CO Observatory 10 Dec 2016 - DPS on TFD Array - LCP-RCP - Correction Array 2014 12 18 B.csv - Offset 50 Gain 2.0

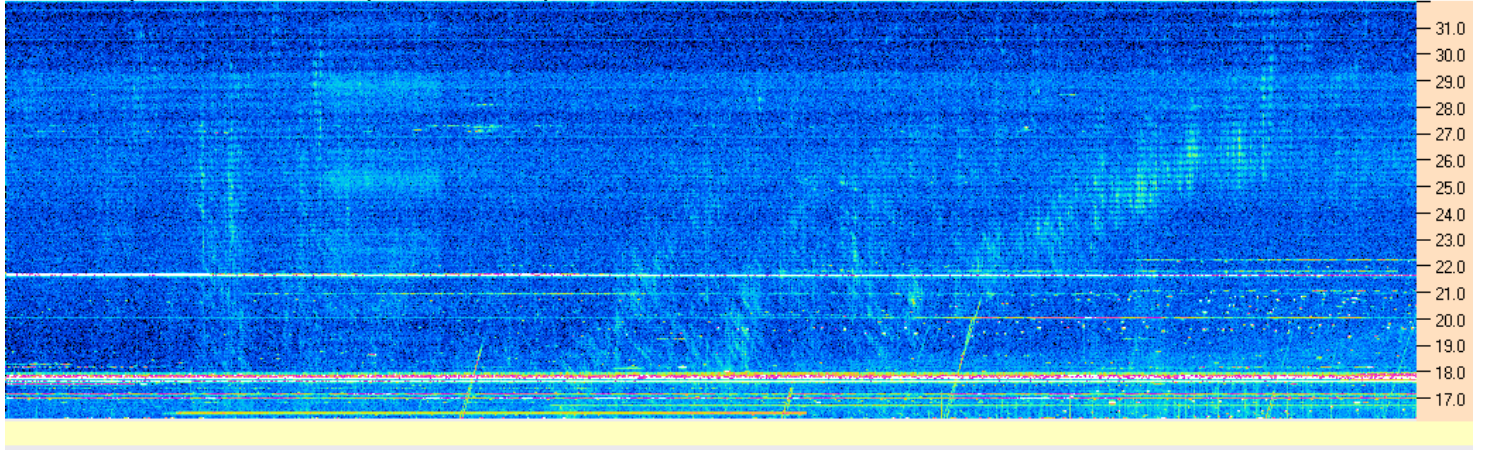




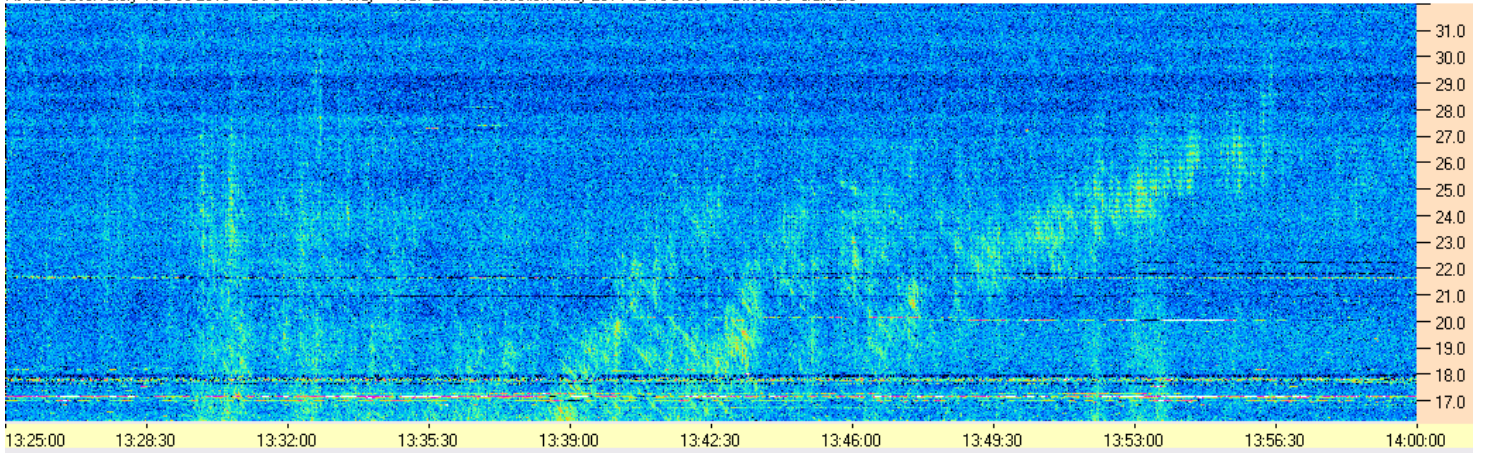
AJ4CO Observatory 10 Dec 2016 - DPS on TFD Array - RCP - Correction Array 2014 12 18 B.csv - Offset 2075 Gain 5.0



AJ4CO Observatory 10 Dec 2016 - DPS on TFD Array - LCP - Correction Array 2014 12 18 B.csv - Offset 2075 Gain 5.0



AJ4CO Observatory 10 Dec 2016 - DPS on TFD Array - RCP-LCP - Correction Array 2014 12 18 B.csv - Offset 50 Gain 2.0



AJ4CO Observatory 10 Dec 2016 - DPS on TFD Array - LCP-RCP - Correction Array 2014 12 18 B.csv - Offset 50 Gain 2.0

