

Good Io-C.

Might have been some S bursting in the lower frequency arc, but not clear enough on the spectrograms to tell for sure. The upper arc was L bursting with fast scintillation.

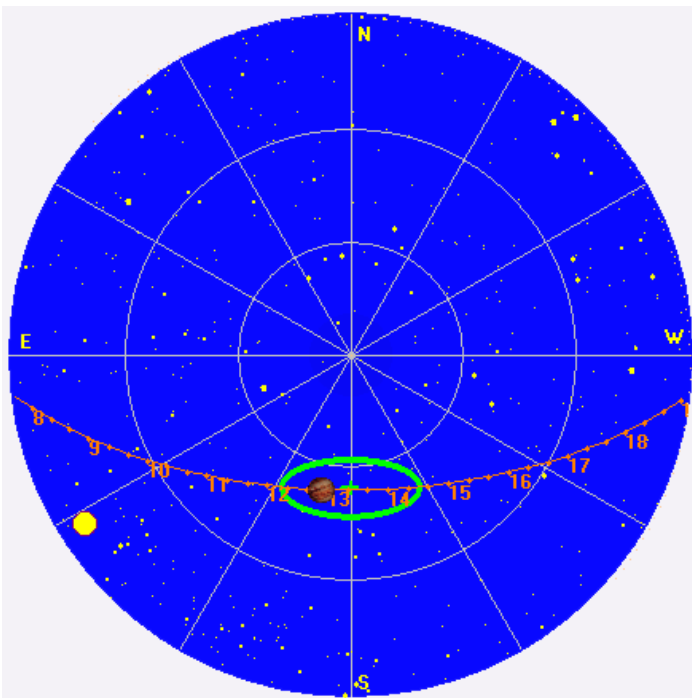
As usual for Io-C, emission was very strongly LCP, up to 12 dB over RCP. This figure may be understated due to the somewhat large off-zenith source location and beam steering angle.

LCP dominant L bursting 1144–1406 UTC from 16 to 23 MHz, vertex late arcs.

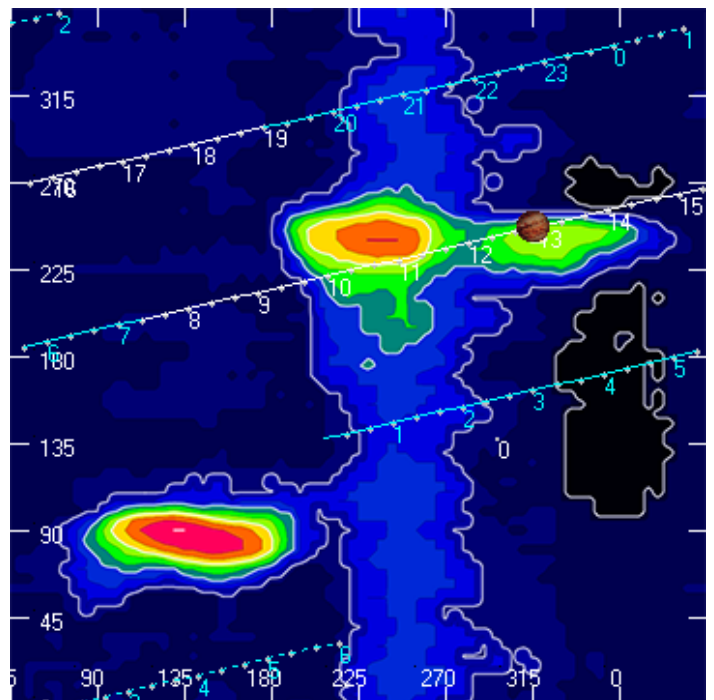
Jupiter was  $-27^\circ$  to  $+15^\circ$  off axis.

Jupiter was leading the Sun by  $60^\circ$ .

Jupiter's location at midpoint of observed emission (1255 UTC)

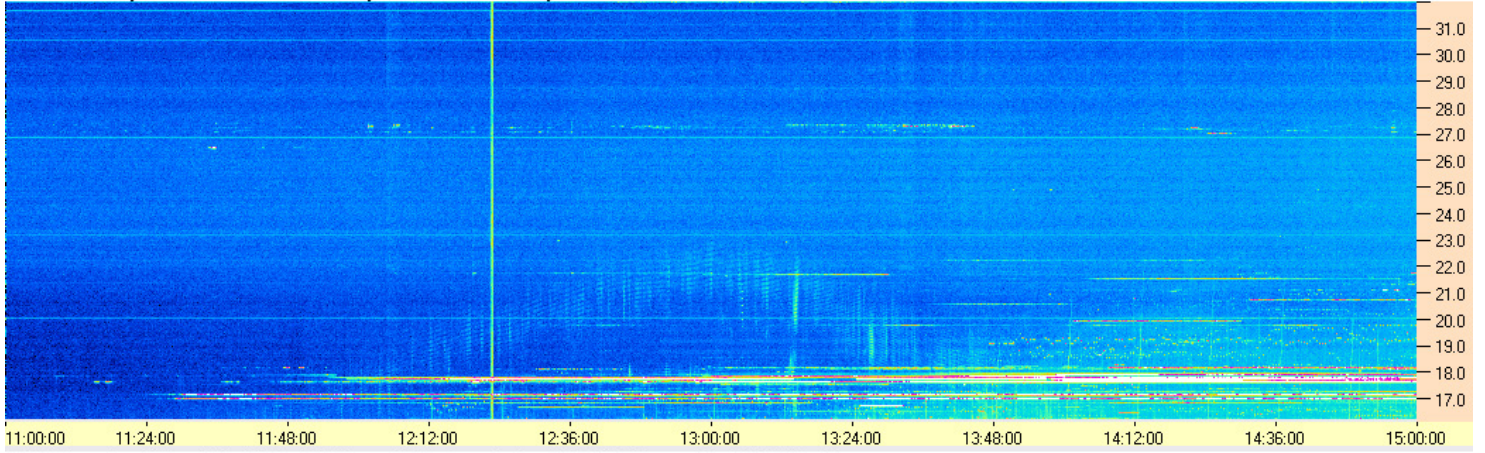


Sky map with array HPBW in green.

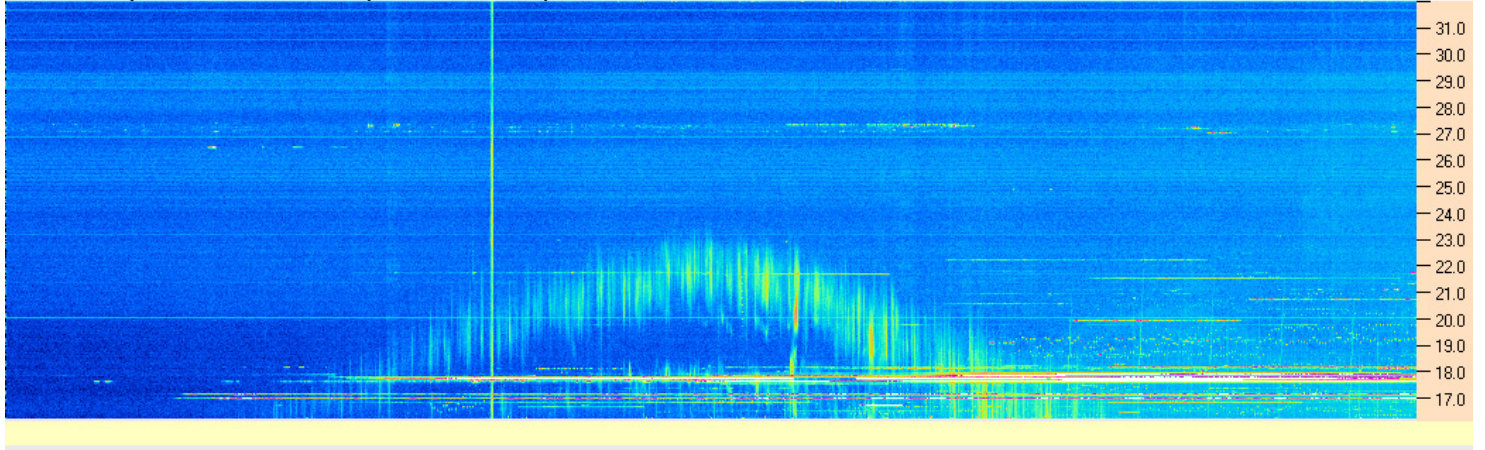


CML-Io phase plane.

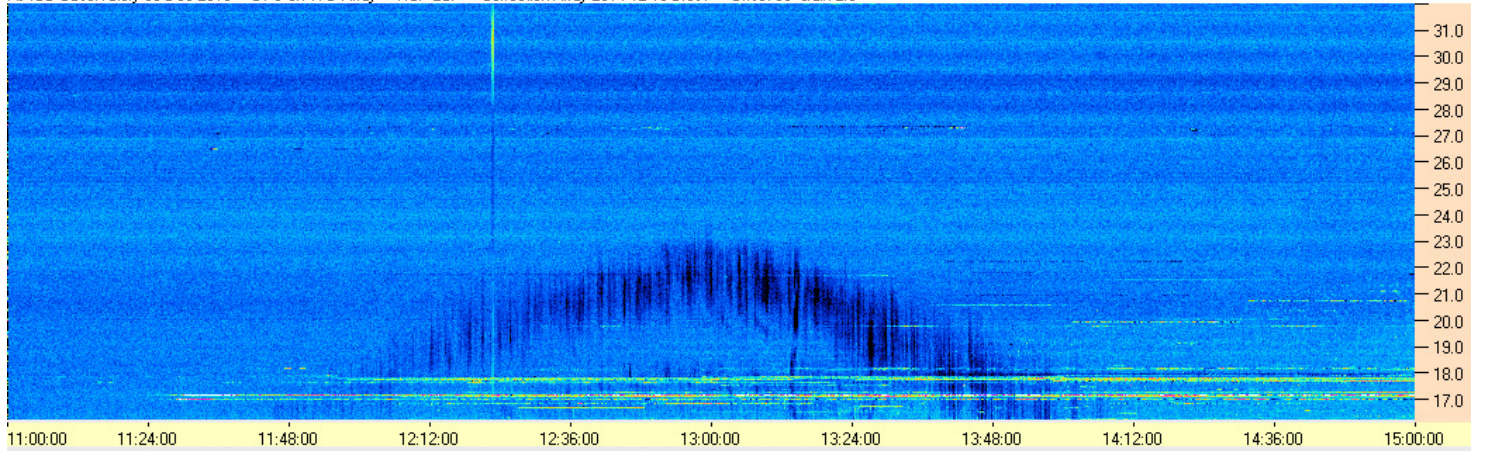
AJ4CO Observatory 09 Dec 2016 - DPS on TFD Array - RCP - Correction Array 2014 12 18 B.csv - Offset 2050 Gain 5.0



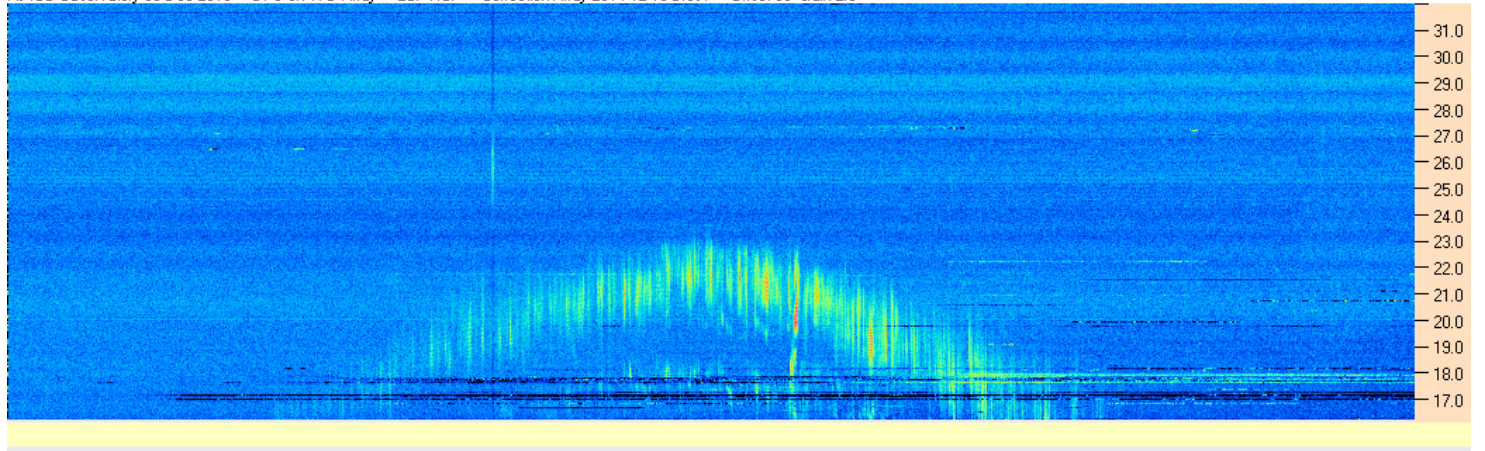
AJ4CO Observatory 09 Dec 2016 - DPS on TFD Array - LCP - Correction Array 2014 12 18 B.csv - Offset 2050 Gain 5.0

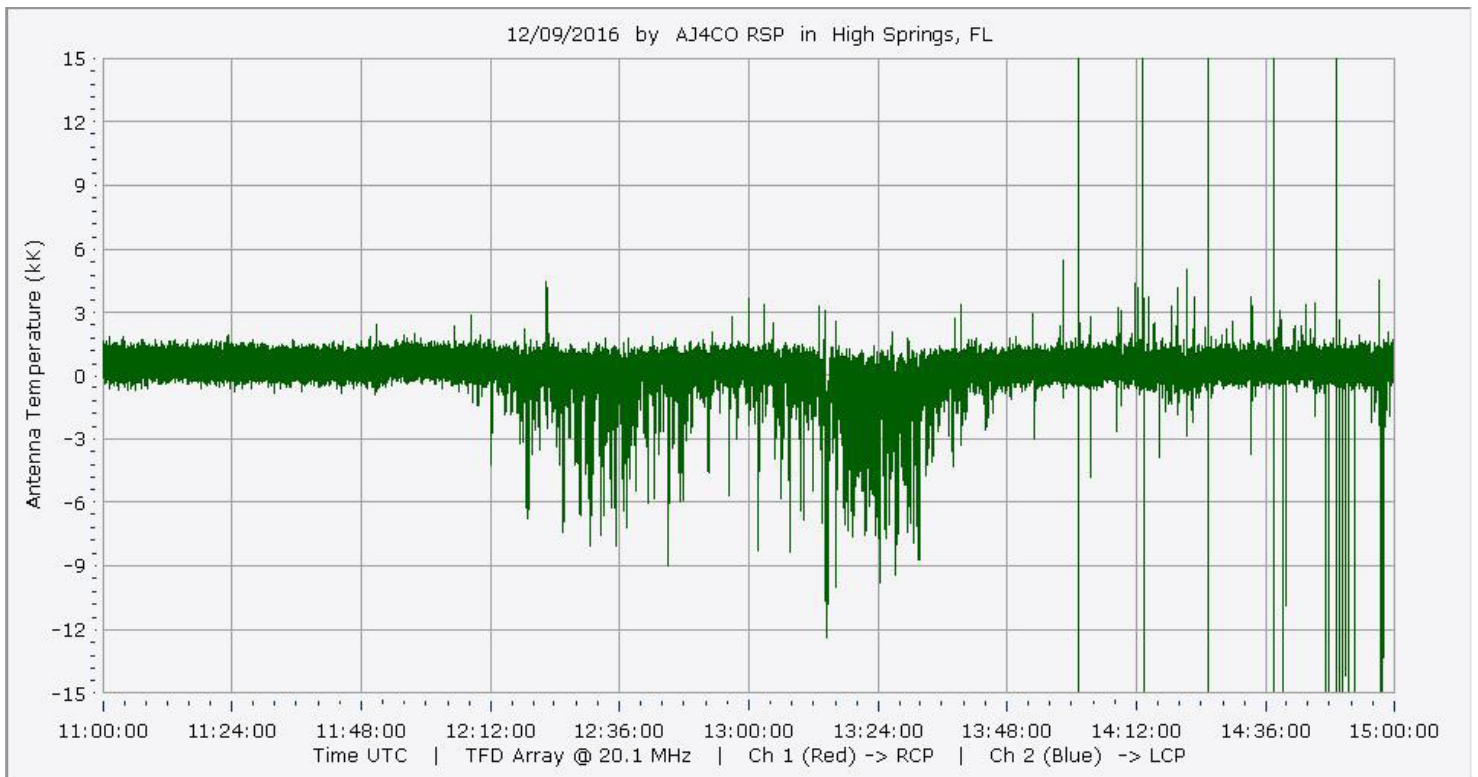
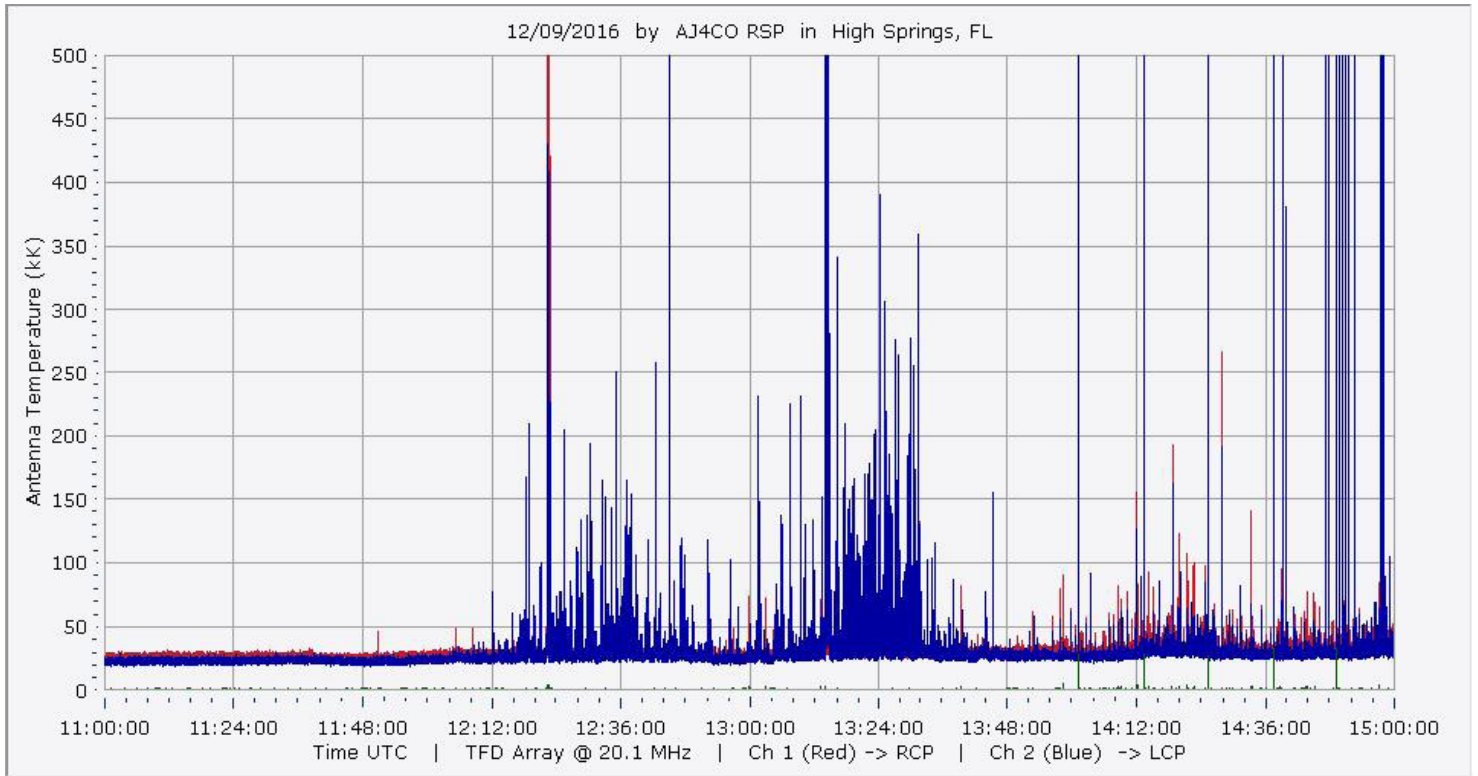


AJ4CO Observatory 09 Dec 2016 - DPS on TFD Array - RCP-LCP - Correction Array 2014 12 18 B.csv - Offset 50 Gain 2.0

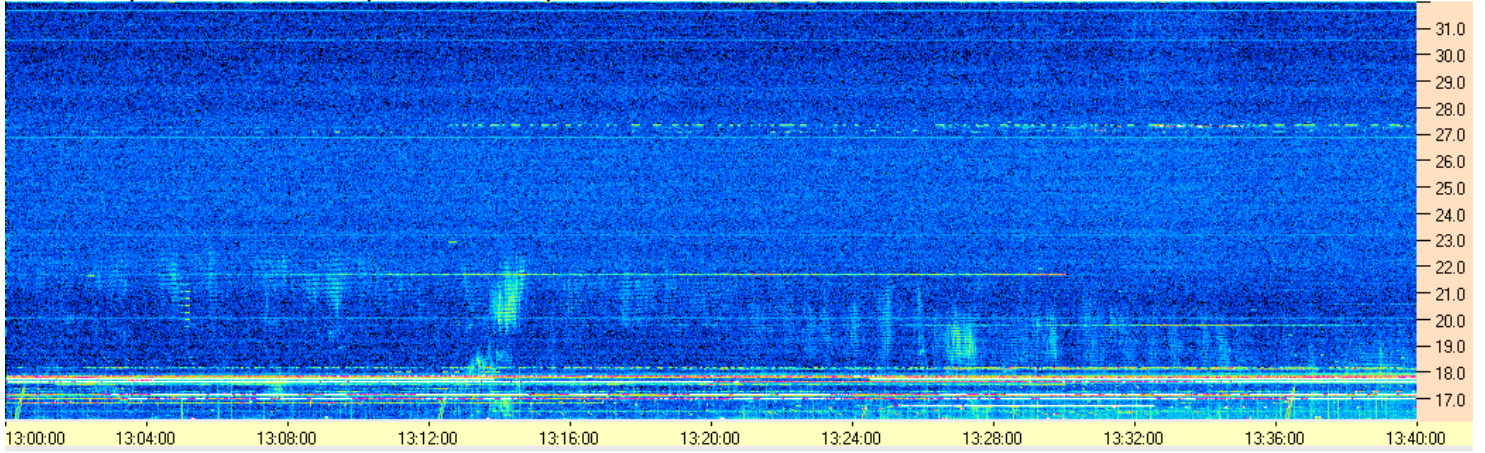


AJ4CO Observatory 09 Dec 2016 - DPS on TFD Array - LCP-RCP - Correction Array 2014 12 18 B.csv - Offset 50 Gain 2.0

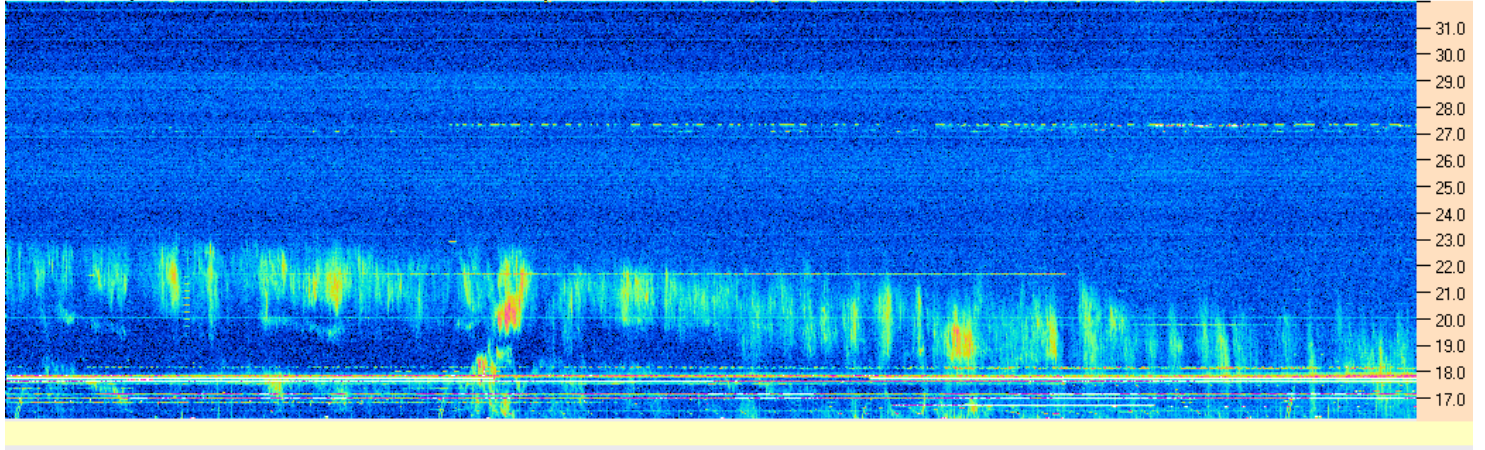




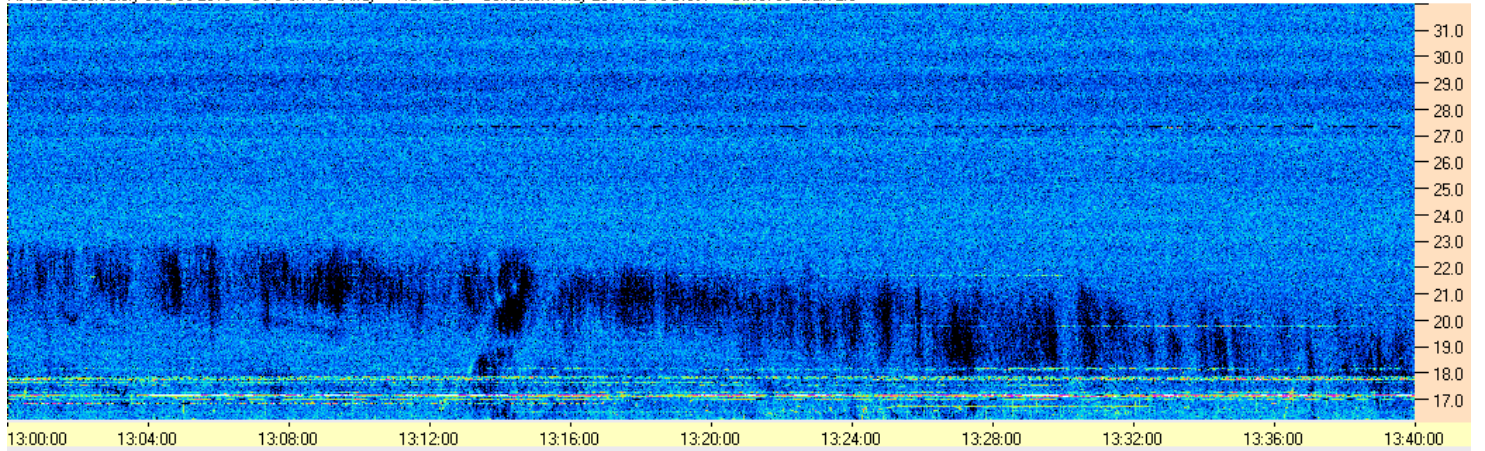
AJ4CO Observatory 09 Dec 2016 - DPS on TFD Array - RCP - Correction Array 2014 12 18 B.csv - Offset 2075 Gain 5.0



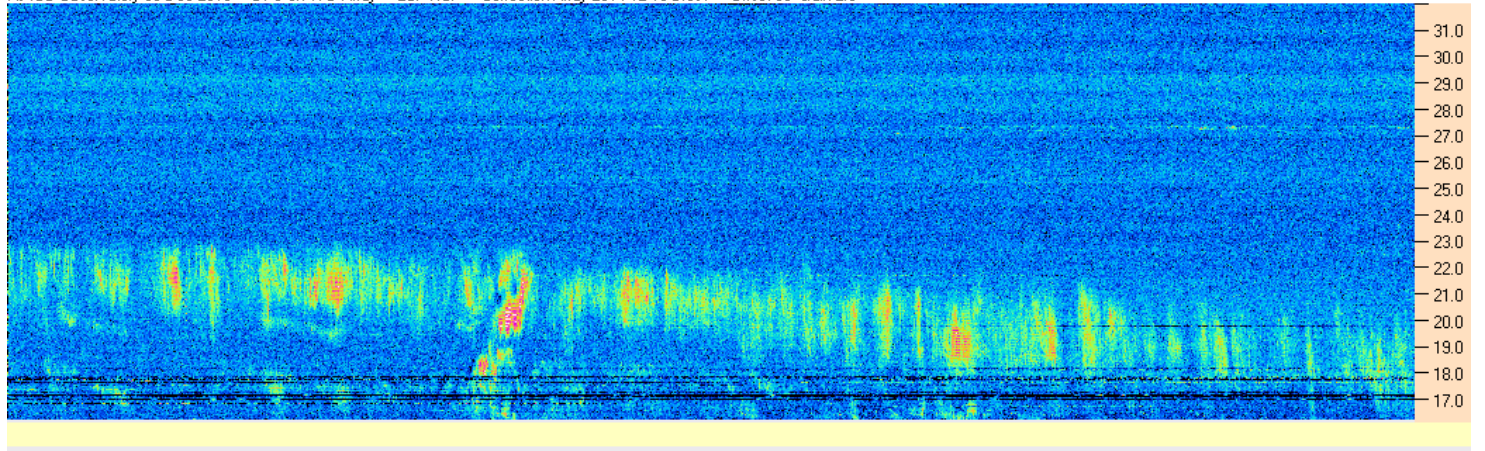
AJ4CO Observatory 09 Dec 2016 - DPS on TFD Array - LCP - Correction Array 2014 12 18 B.csv - Offset 2075 Gain 5.0

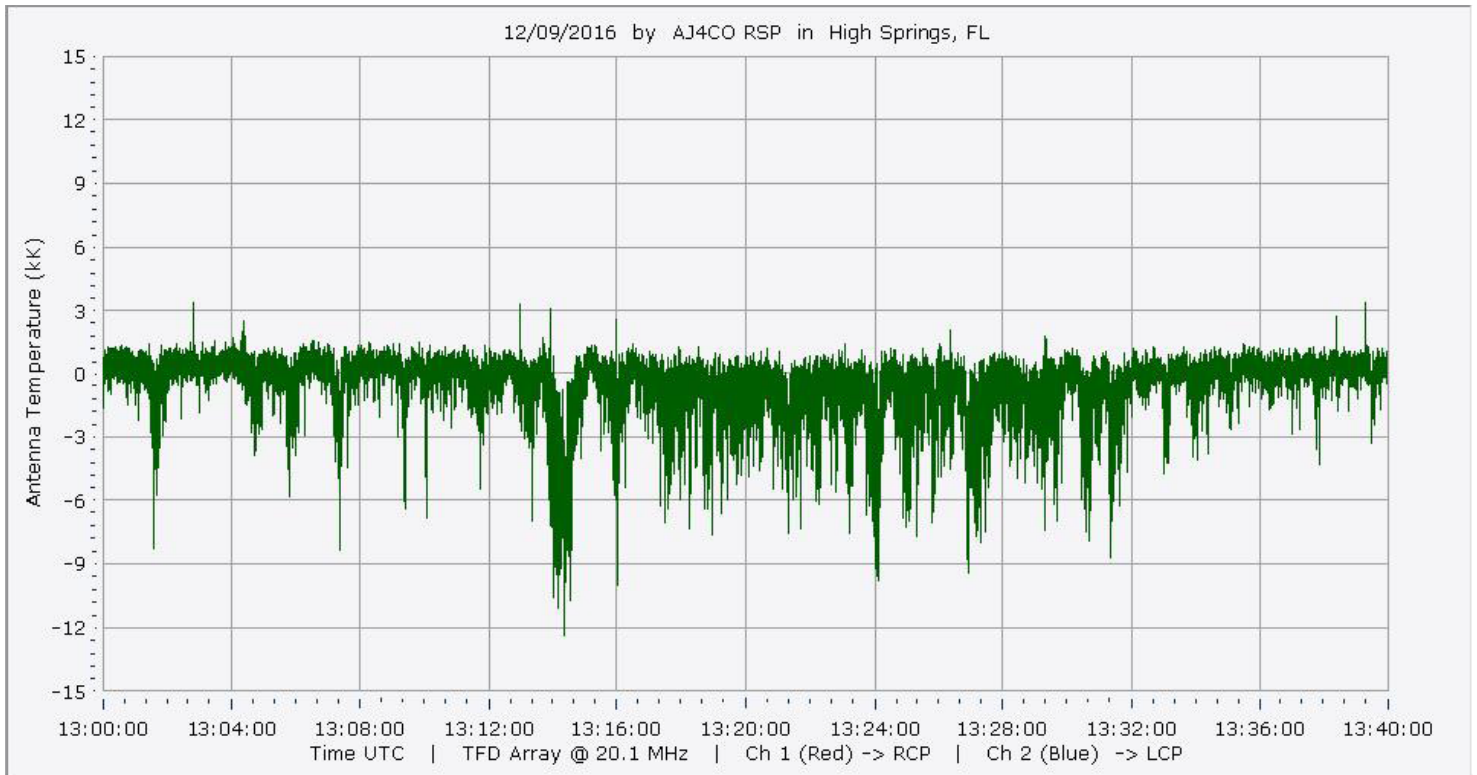
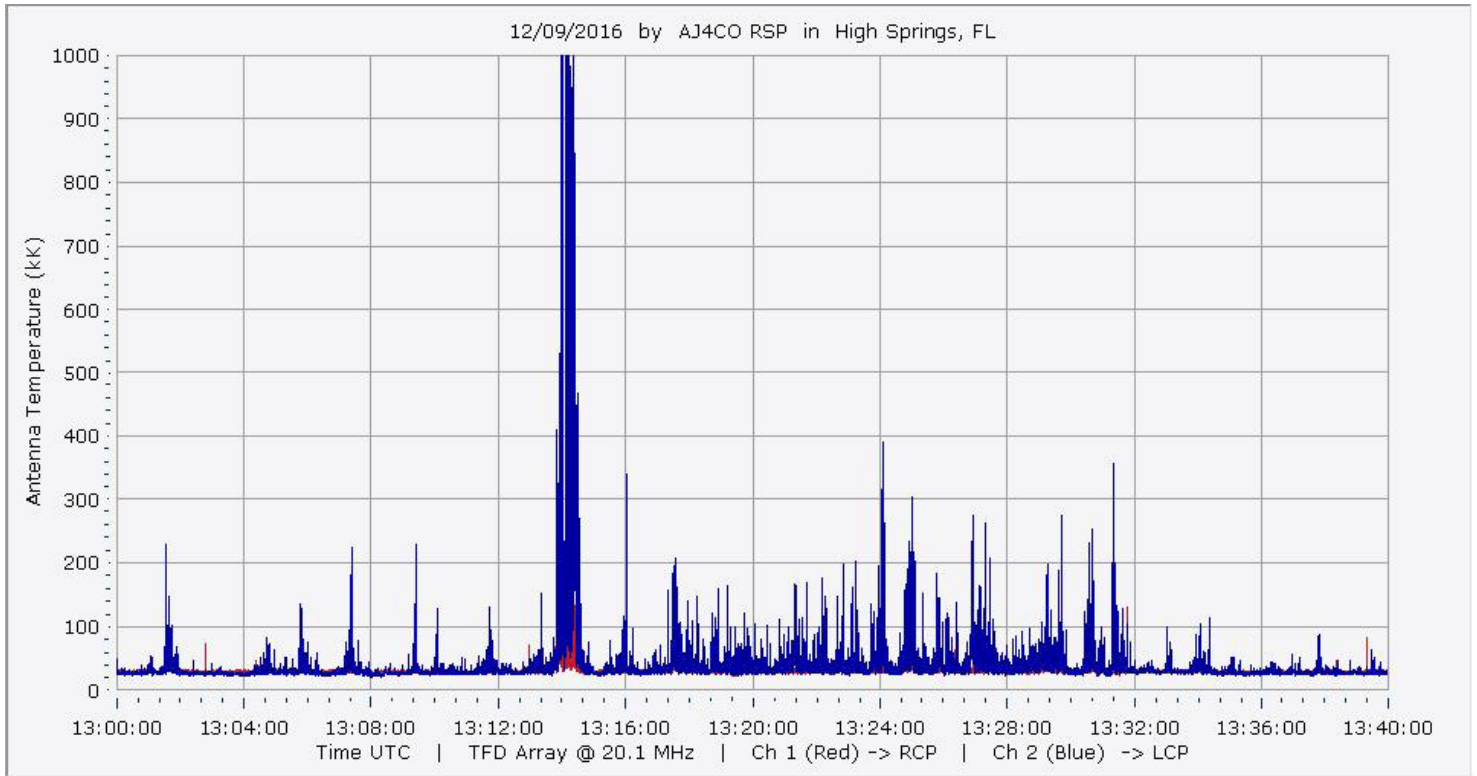


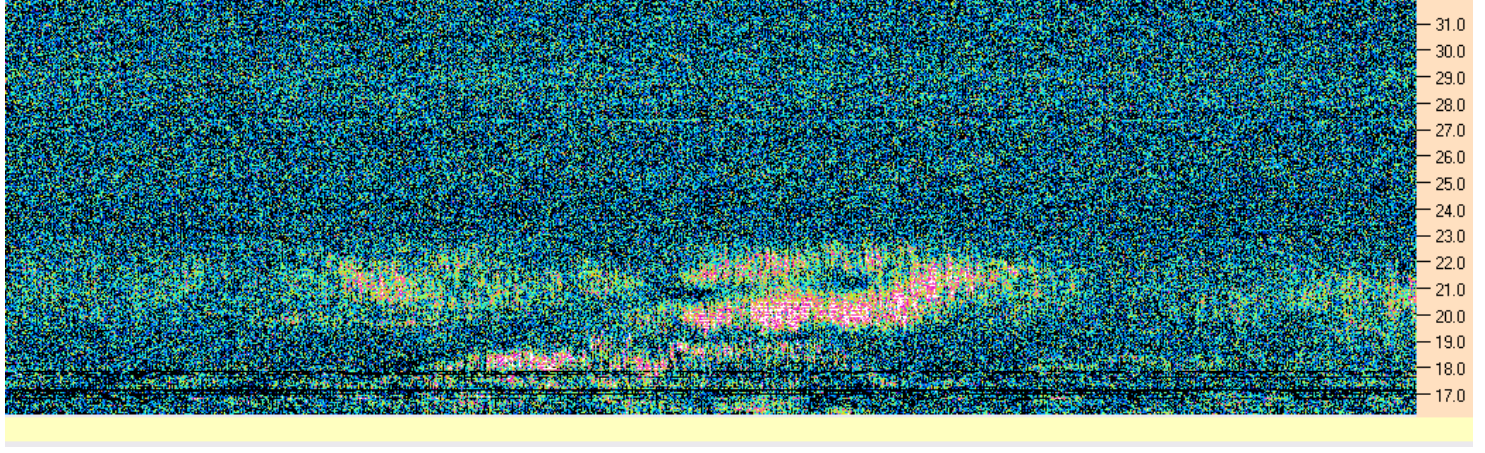
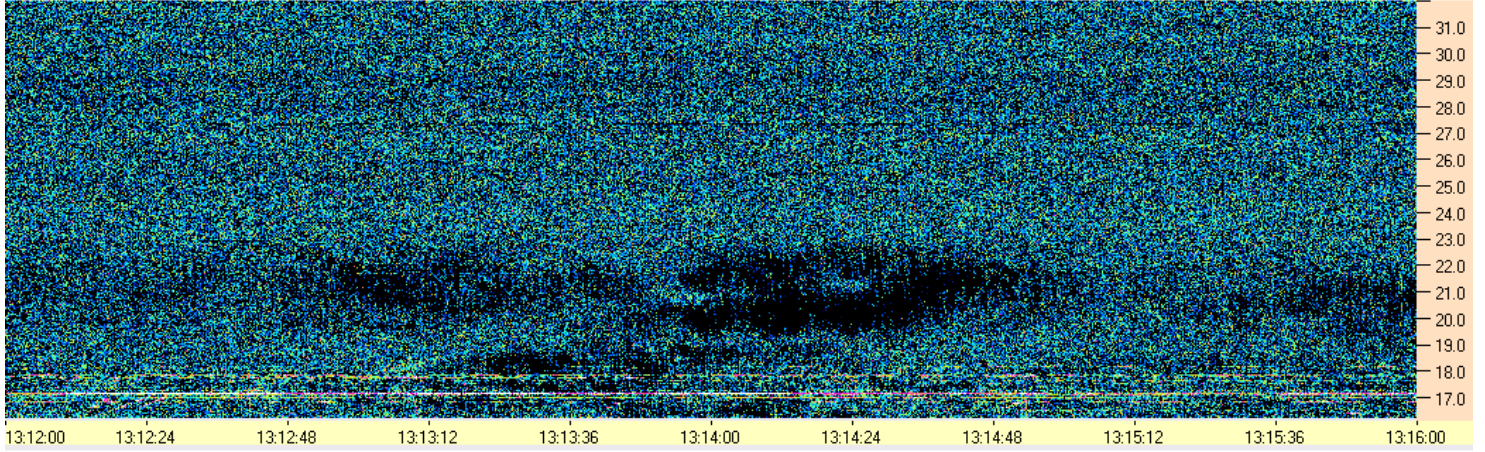
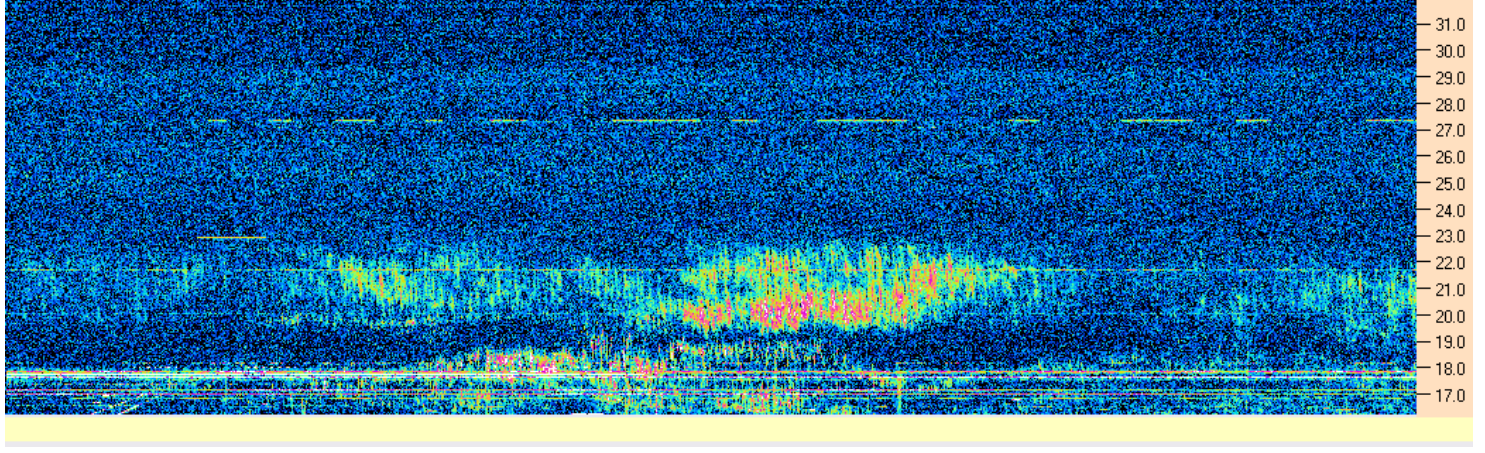
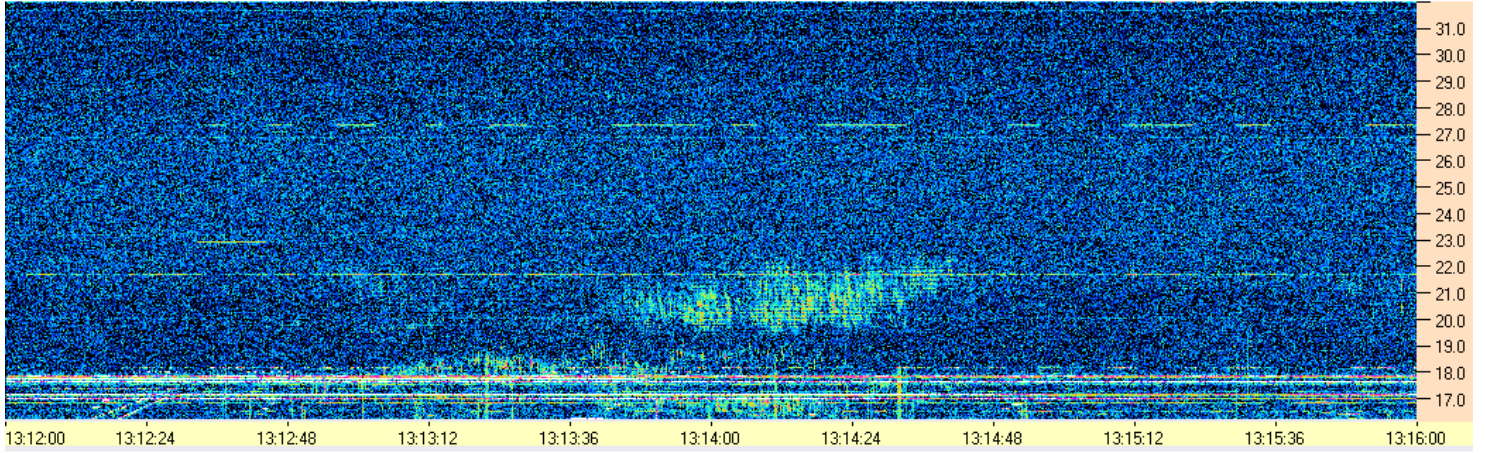
AJ4CO Observatory 09 Dec 2016 - DPS on TFD Array - RCP-LCP - Correction Array 2014 12 18 B.csv - Offset 50 Gain 2.0

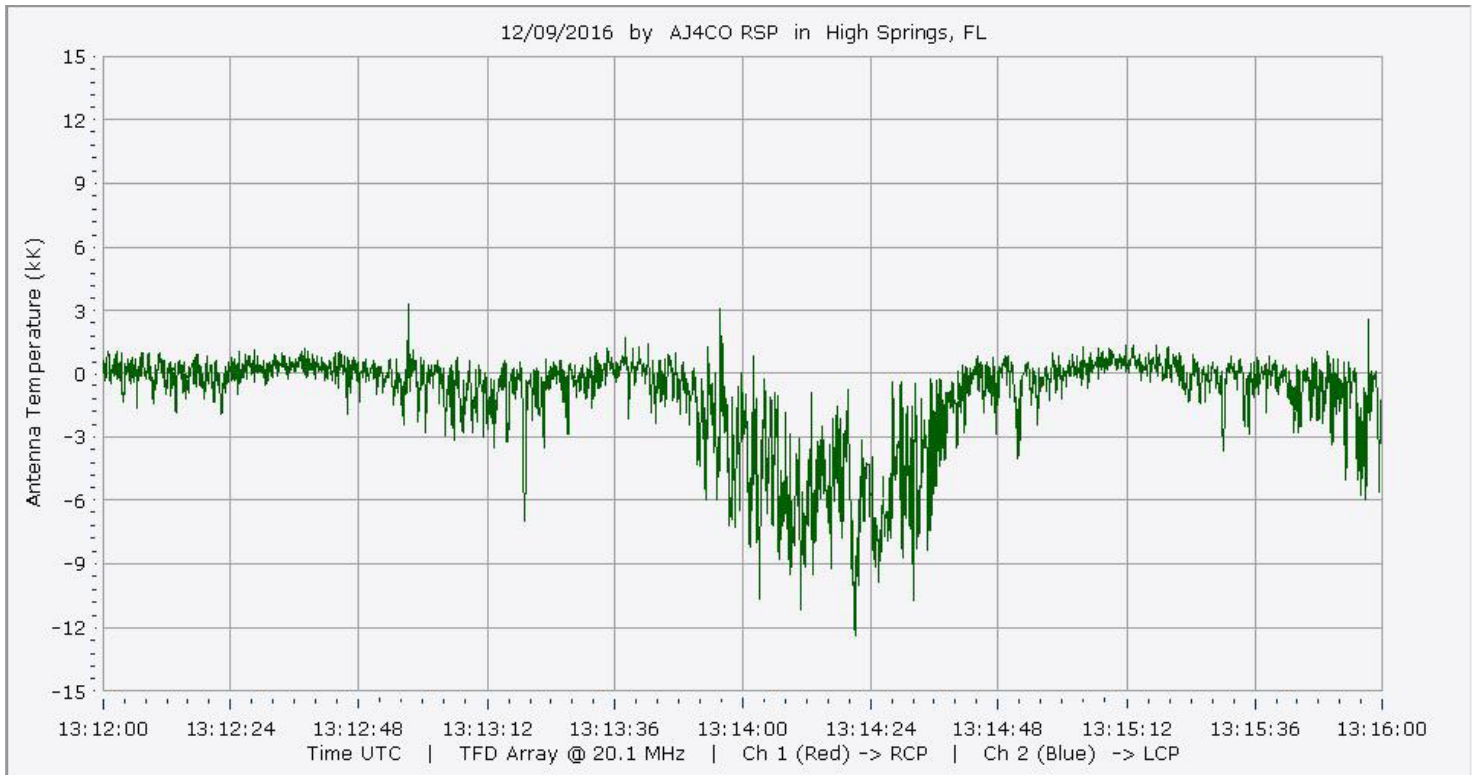
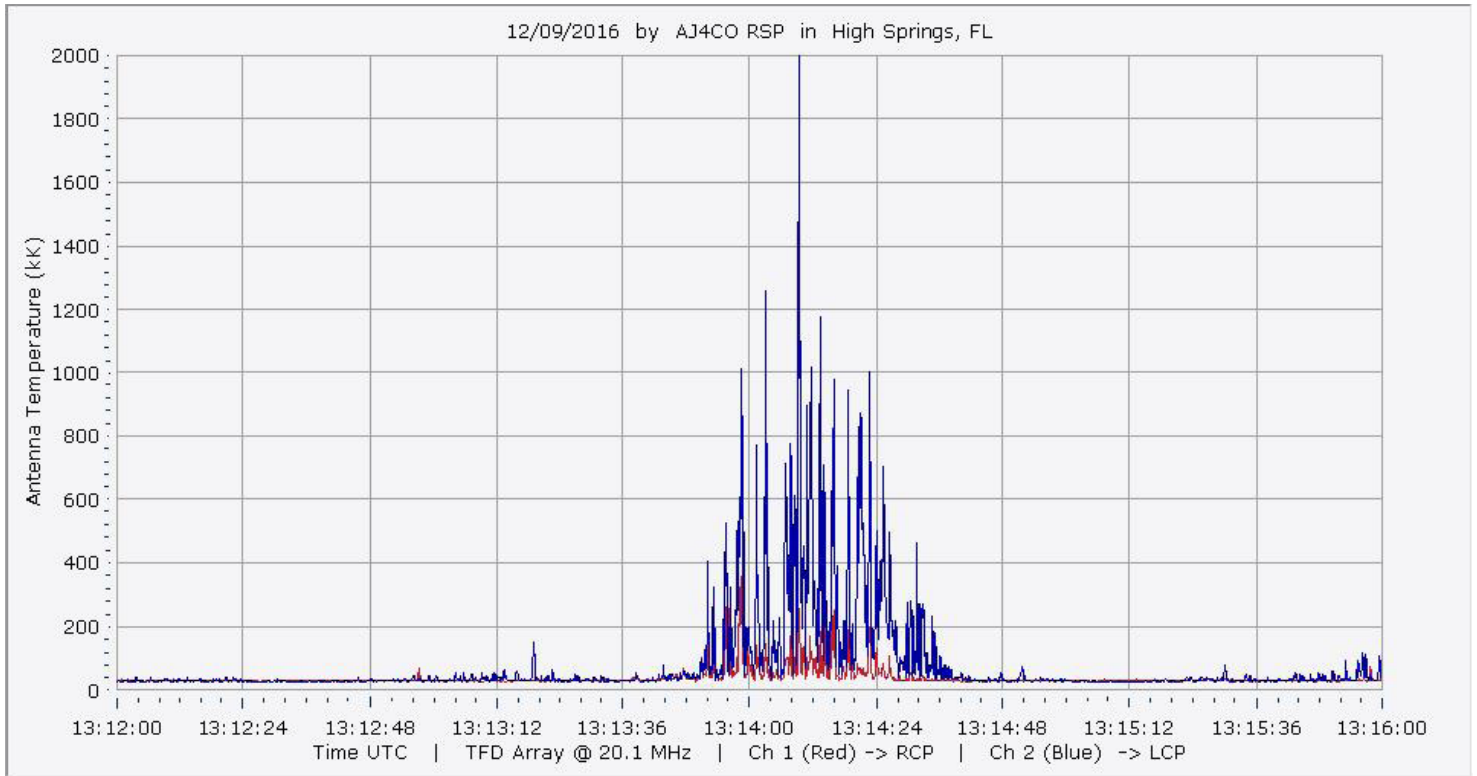


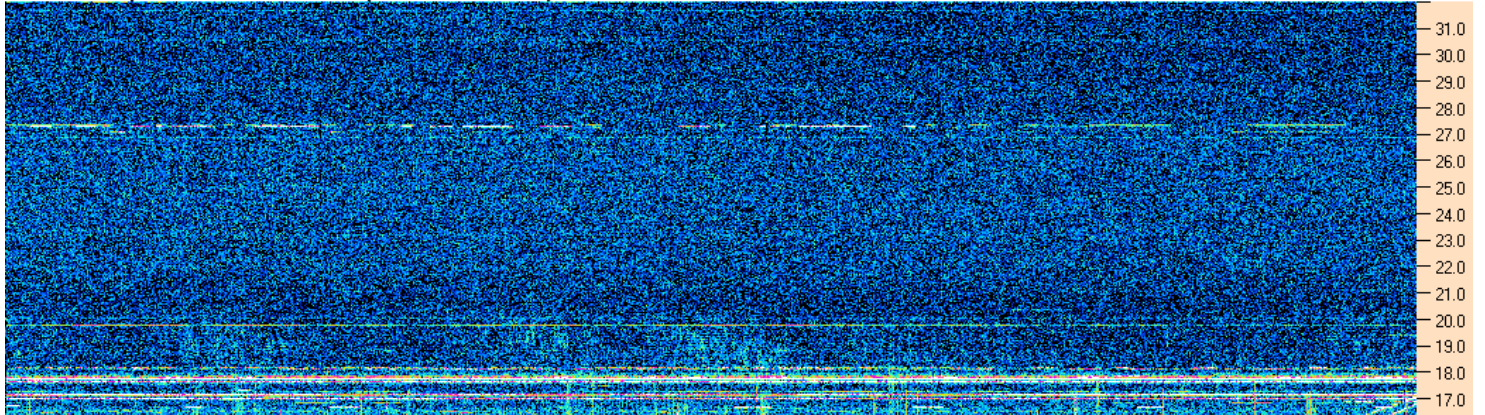
AJ4CO Observatory 09 Dec 2016 - DPS on TFD Array - LCP-RCP - Correction Array 2014 12 18 B.csv - Offset 50 Gain 2.0



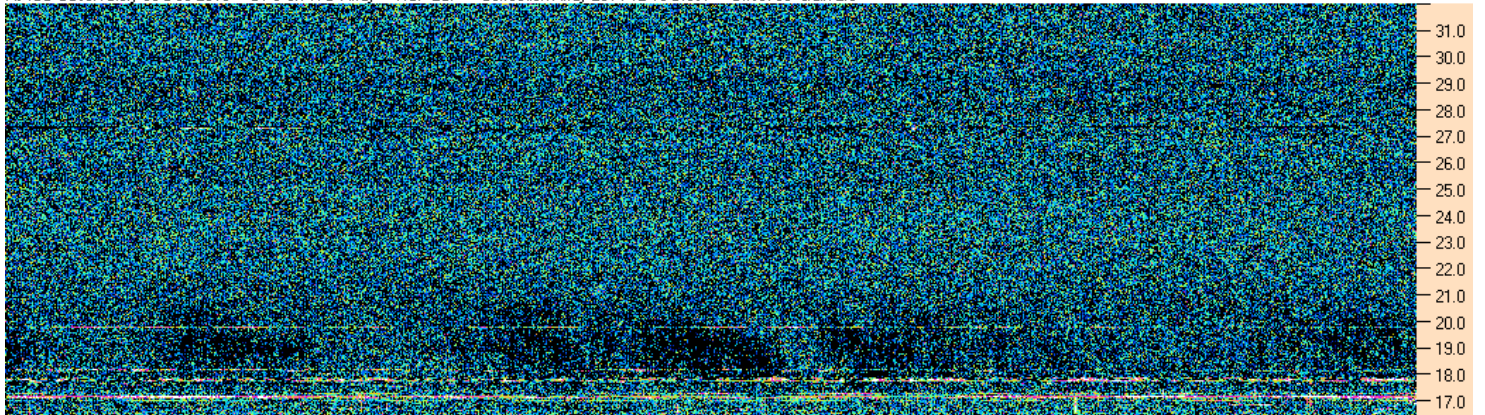
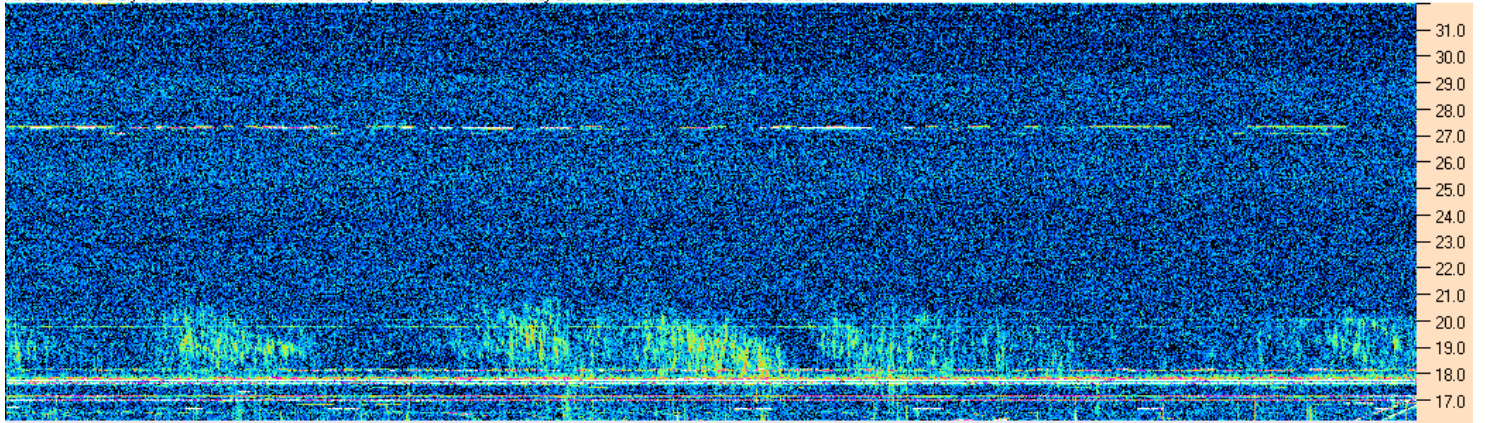








13:32:30 13:32:54 13:33:17 13:33:41 13:34:04 13:34:28 13:34:51 13:35:15 13:35:38 13:36:02 13:36:25  
AJ4CO Observatory 09 Dec 2016 - DPS on TFD Array - LCP - Correction Array 2014 12 18 B.csv - Offset 2100 Gain 5.0



13:32:30 13:32:54 13:33:17 13:33:41 13:34:04 13:34:28 13:34:51 13:35:15 13:35:38 13:36:02 13:36:25  
AJ4CO Observatory 09 Dec 2016 - DPS on TFD Array - LCP-RCP - Correction Array 2014 12 18 B.csv - Offset 50 Gain 2.0

