

Some weak Io-B, good Io-D, and good non-Io-A.

RCP dominant L bursting 1220–1251 UTC from 16 to 32 MHz, positive frequency drift emission envelope. (Io-B)

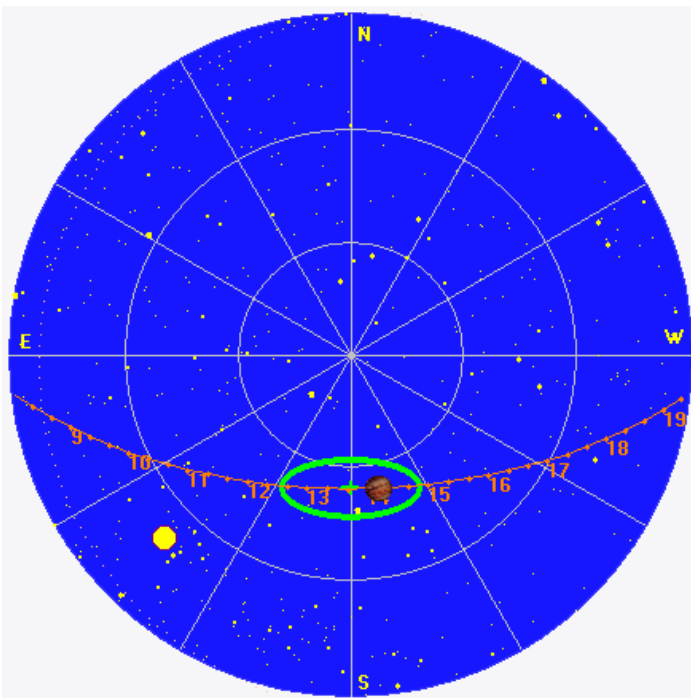
LCP dominant L bursting 1219–1431 UTC from 16 to 25 MHz, positive then negative drift emission envelope. (Io-D)

RCP dominant L bursting 1526–1602 UTC from 16 to 25 MHz, negative frequency drift emission envelope. (non-Io-A)

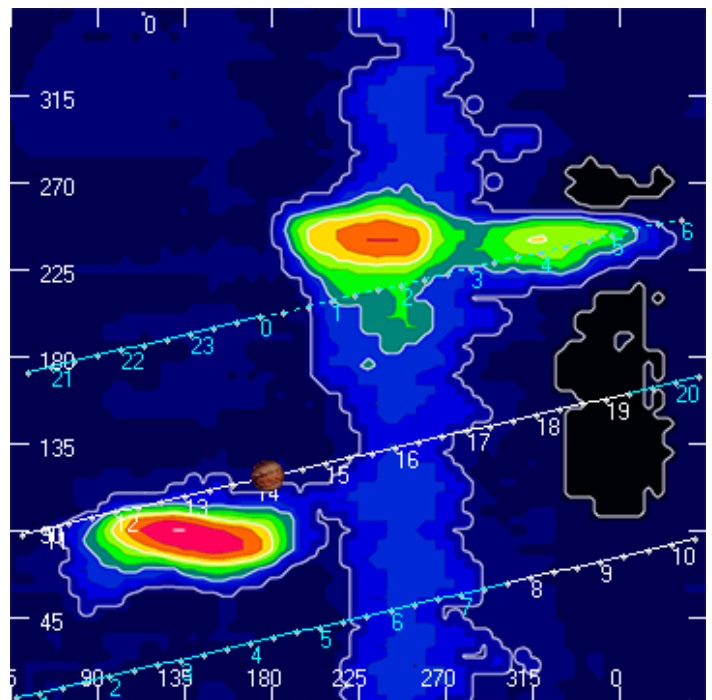
Jupiter was -23° to $+36^\circ$ off axis.

Jupiter was leading the Sun by 55° .

Jupiter's location at midpoint of observed emission (1411 UTC)

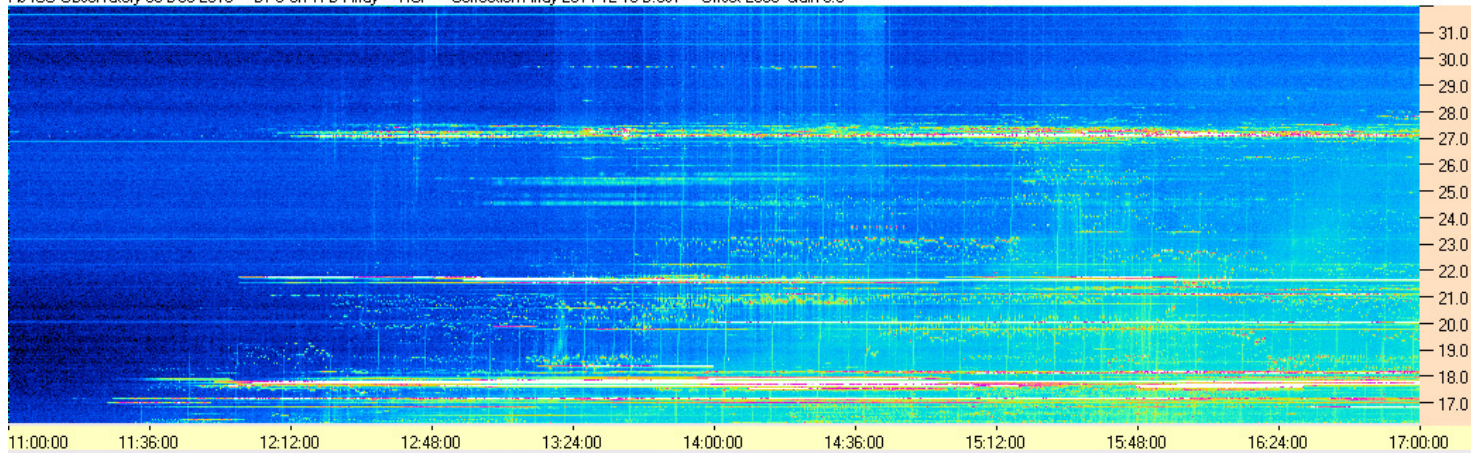


Sky map with array HPBW in green.

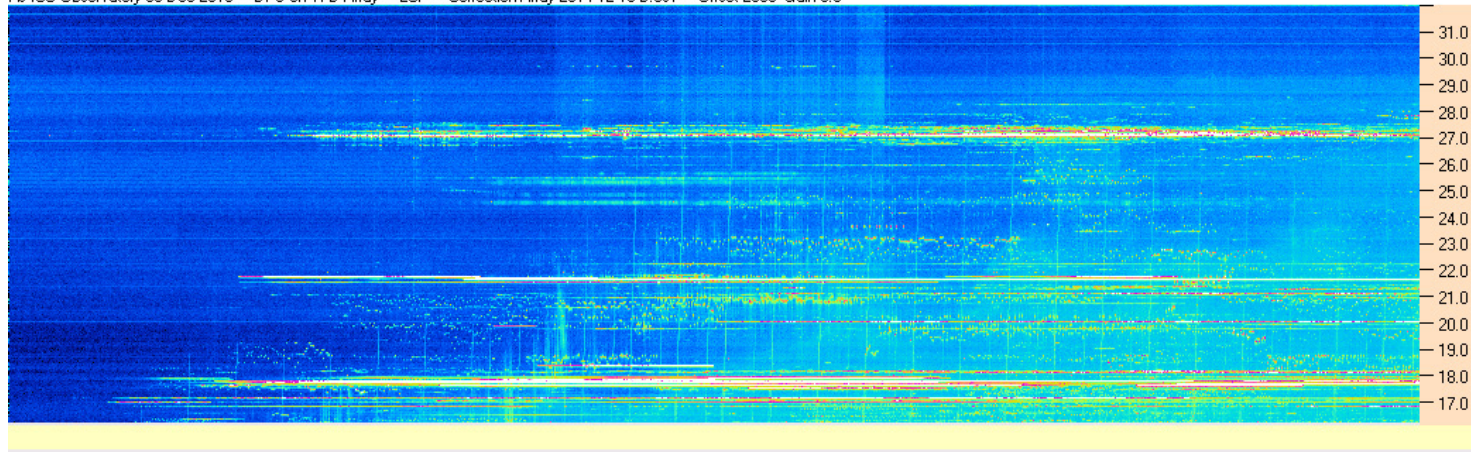


CML-Io phase plane.

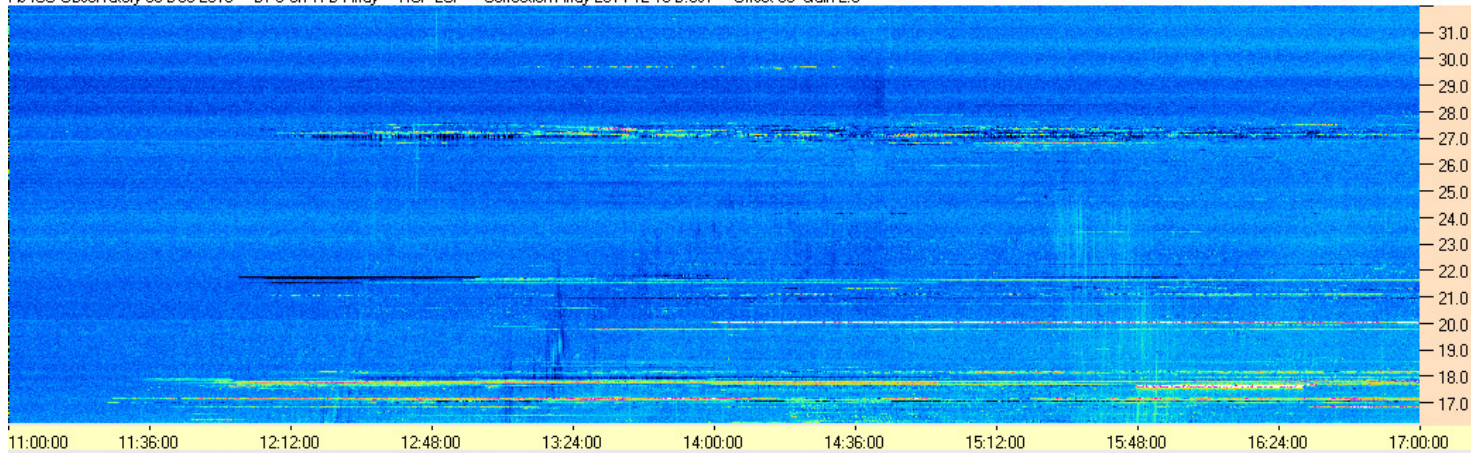
AJ4CO Observatory 03 Dec 2016 - DPS on TFD Array - RCP - Correction Array 2014 12 18 B.csv - Offset 2050 Gain 5.0



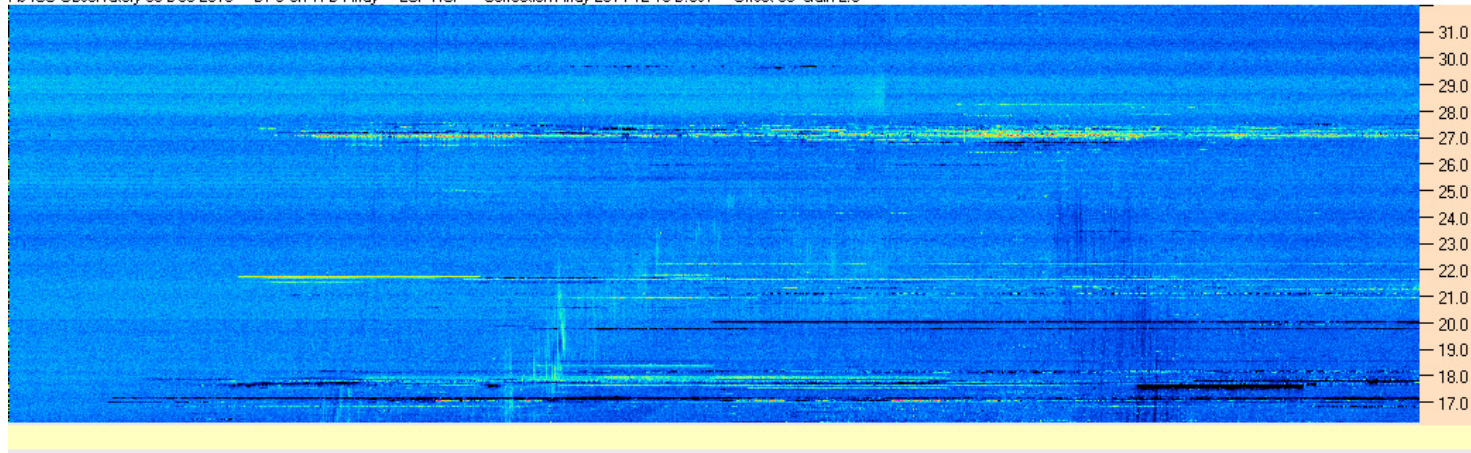
AJ4CO Observatory 03 Dec 2016 - DPS on TFD Array - LCP - Correction Array 2014 12 18 B.csv - Offset 2050 Gain 5.0

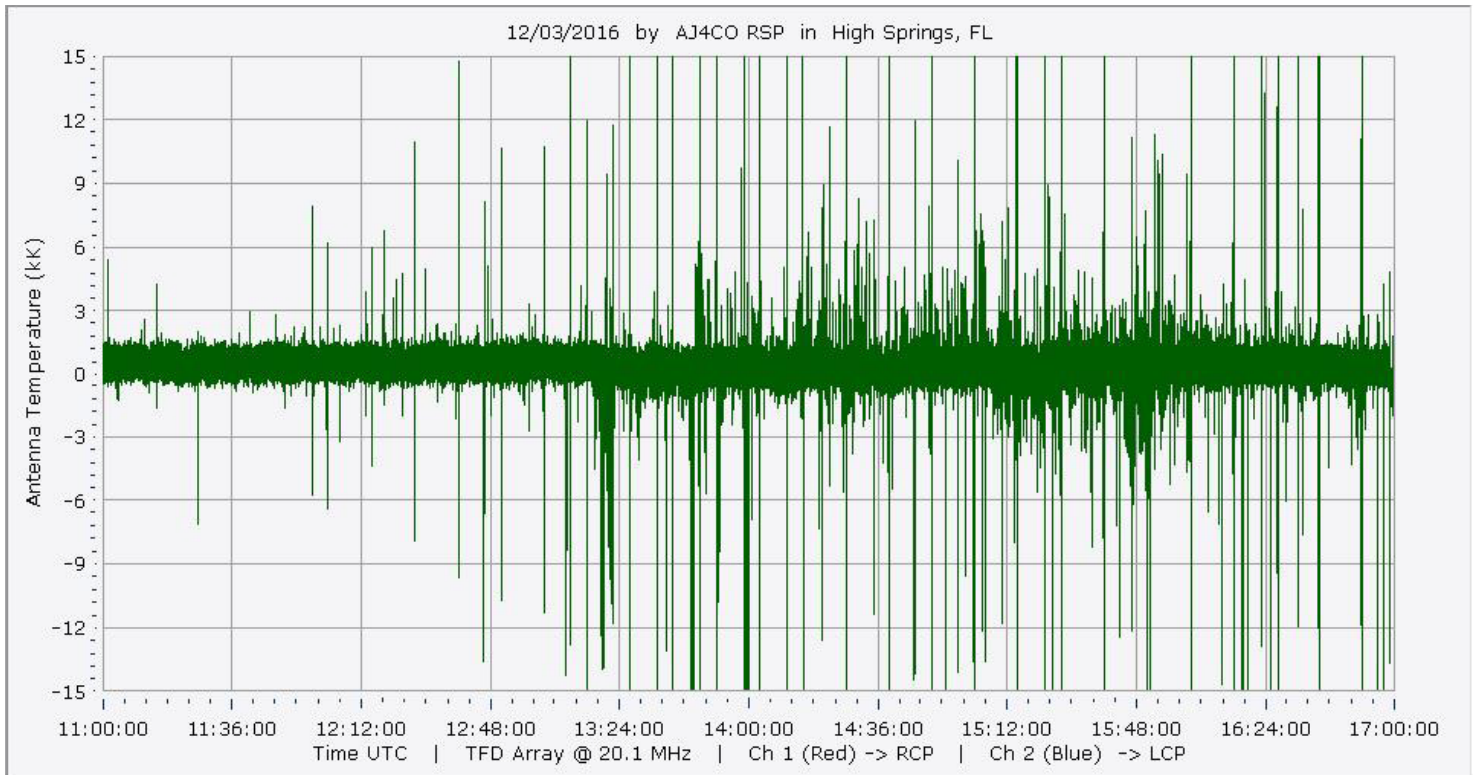
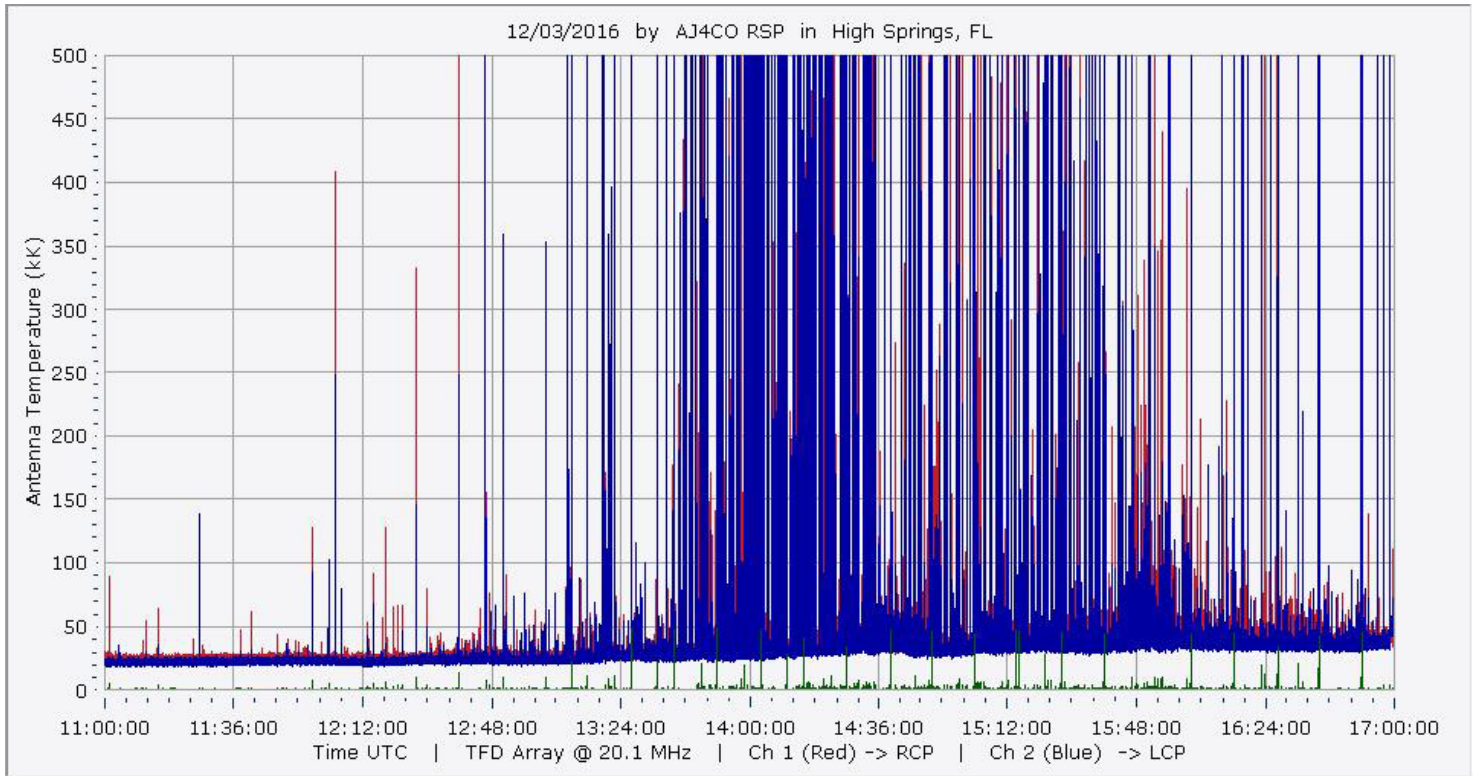


AJ4CO Observatory 03 Dec 2016 - DPS on TFD Array - RCP-LCP - Correction Array 2014 12 18 B.csv - Offset 50 Gain 2.0

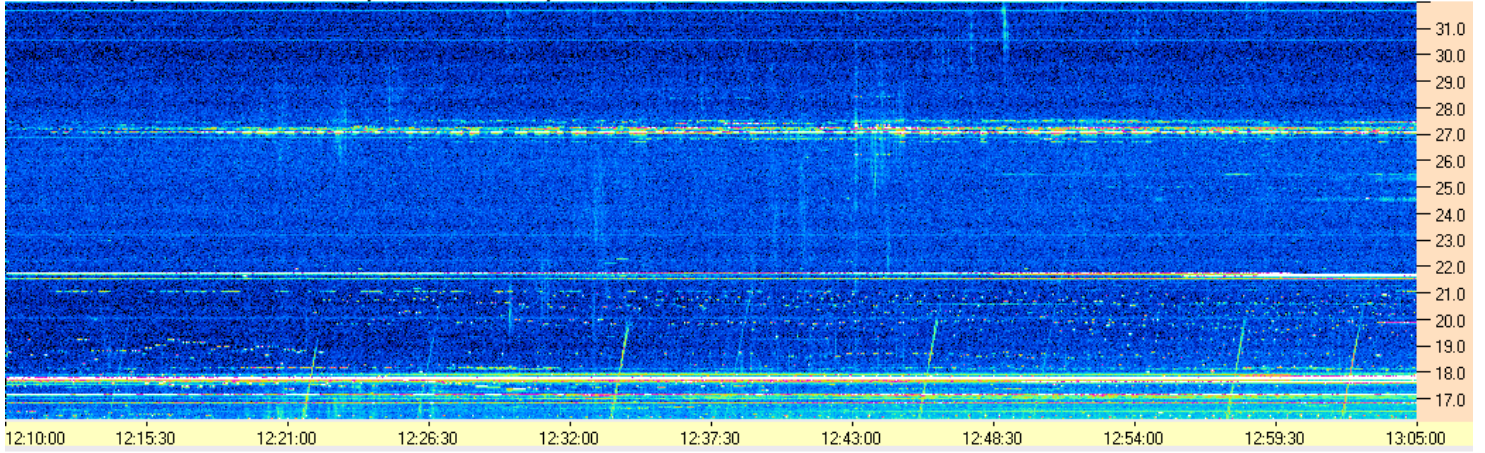


AJ4CO Observatory 03 Dec 2016 - DPS on TFD Array - LCP-RCP - Correction Array 2014 12 18 B.csv - Offset 50 Gain 2.0

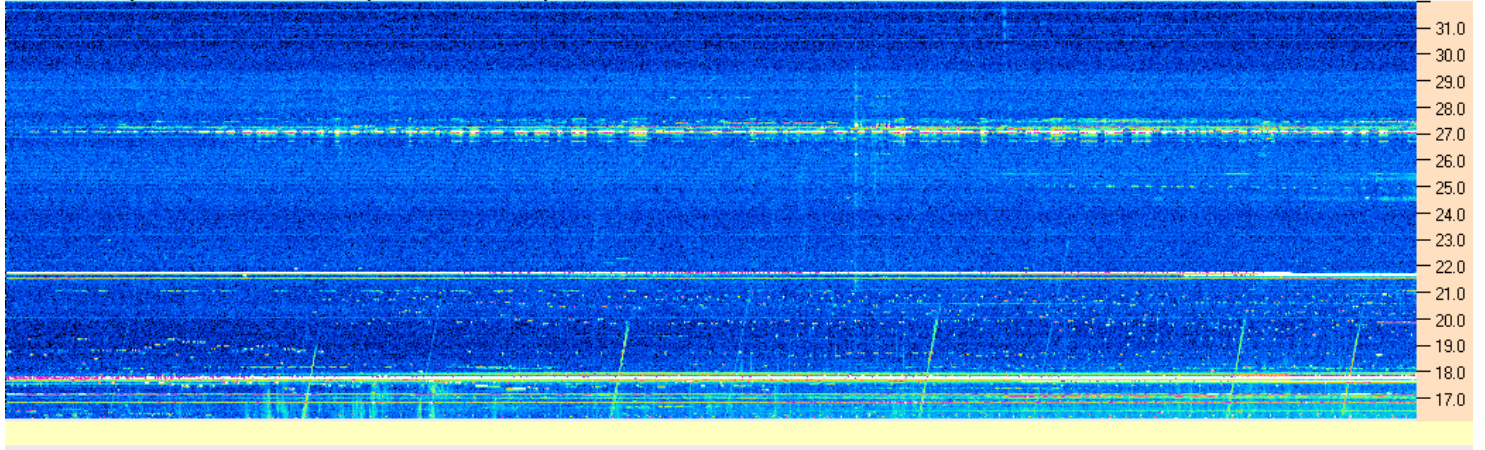




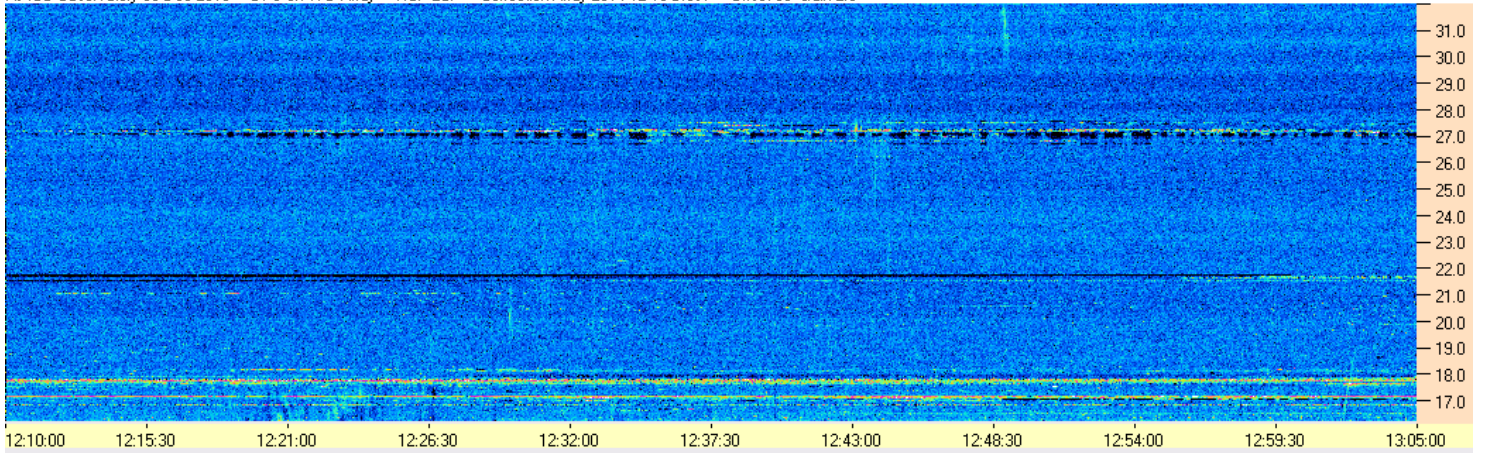
AJ4CO Observatory 03 Dec 2016 - DPS on TFD Array - RCP - Correction Array 2014 12 18 B.csv - Offset 2050 Gain 5.0



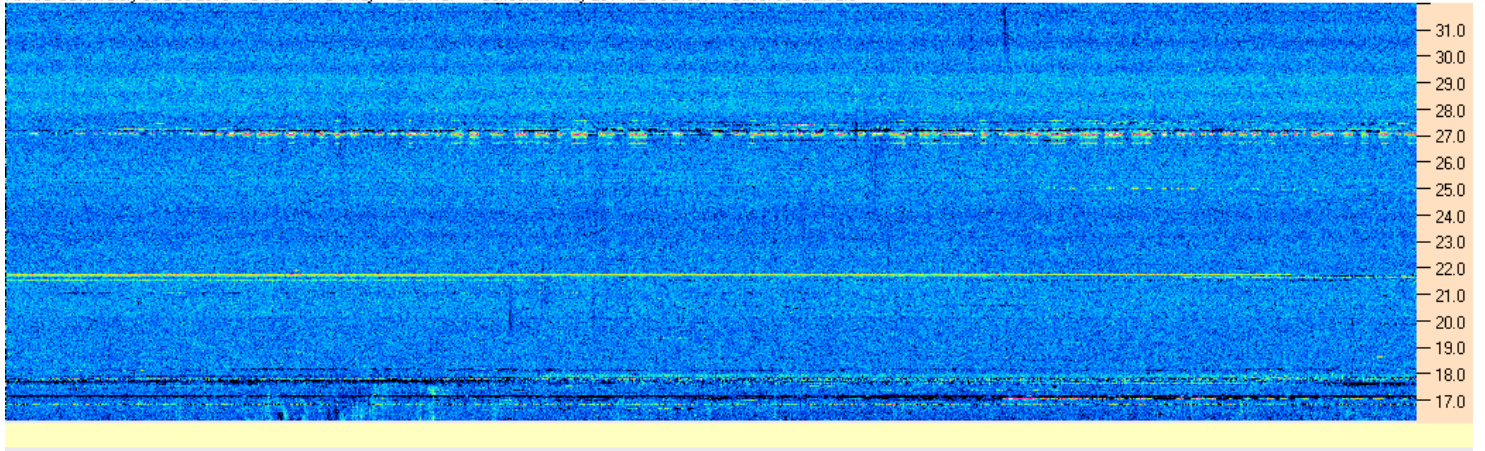
AJ4CO Observatory 03 Dec 2016 - DPS on TFD Array - LCP - Correction Array 2014 12 18 B.csv - Offset 2050 Gain 5.0

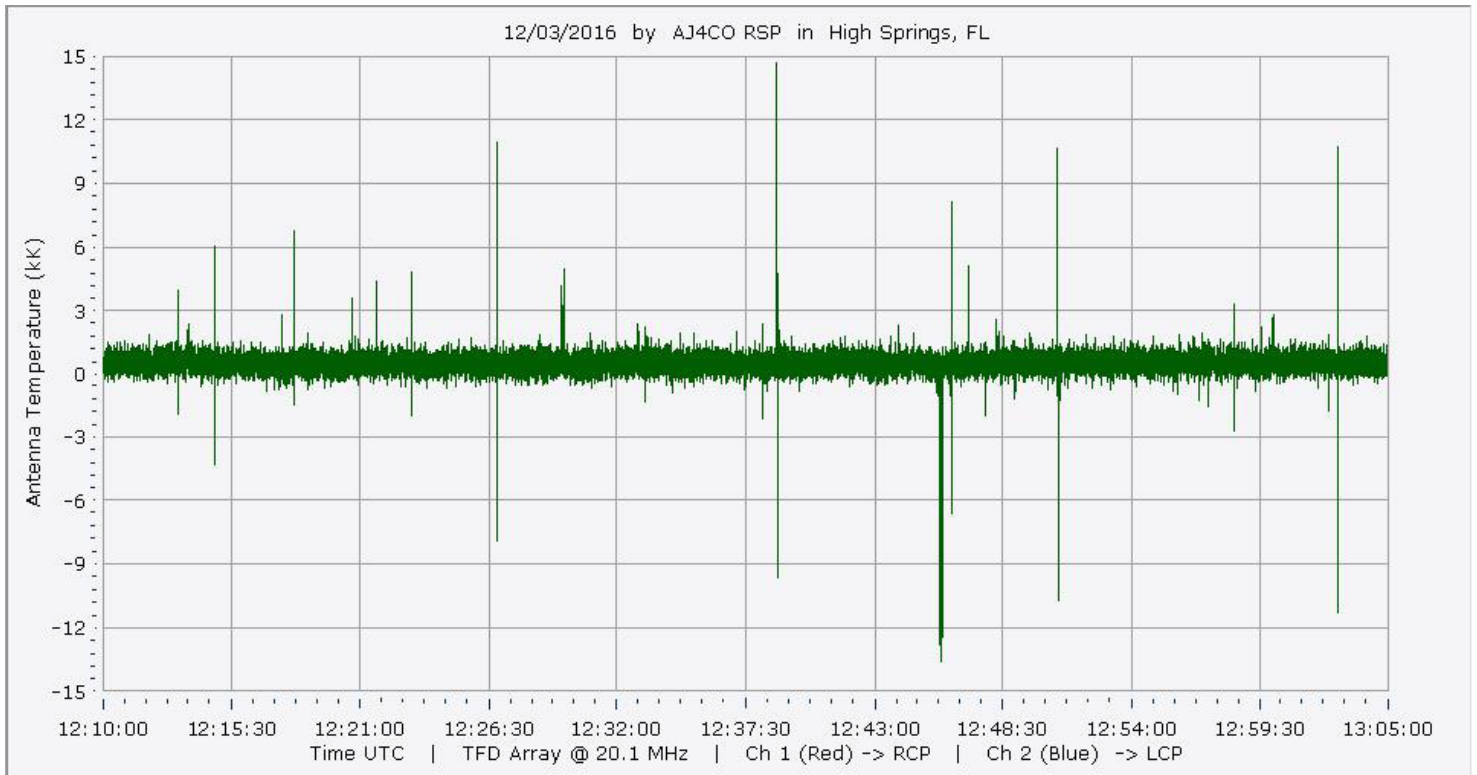
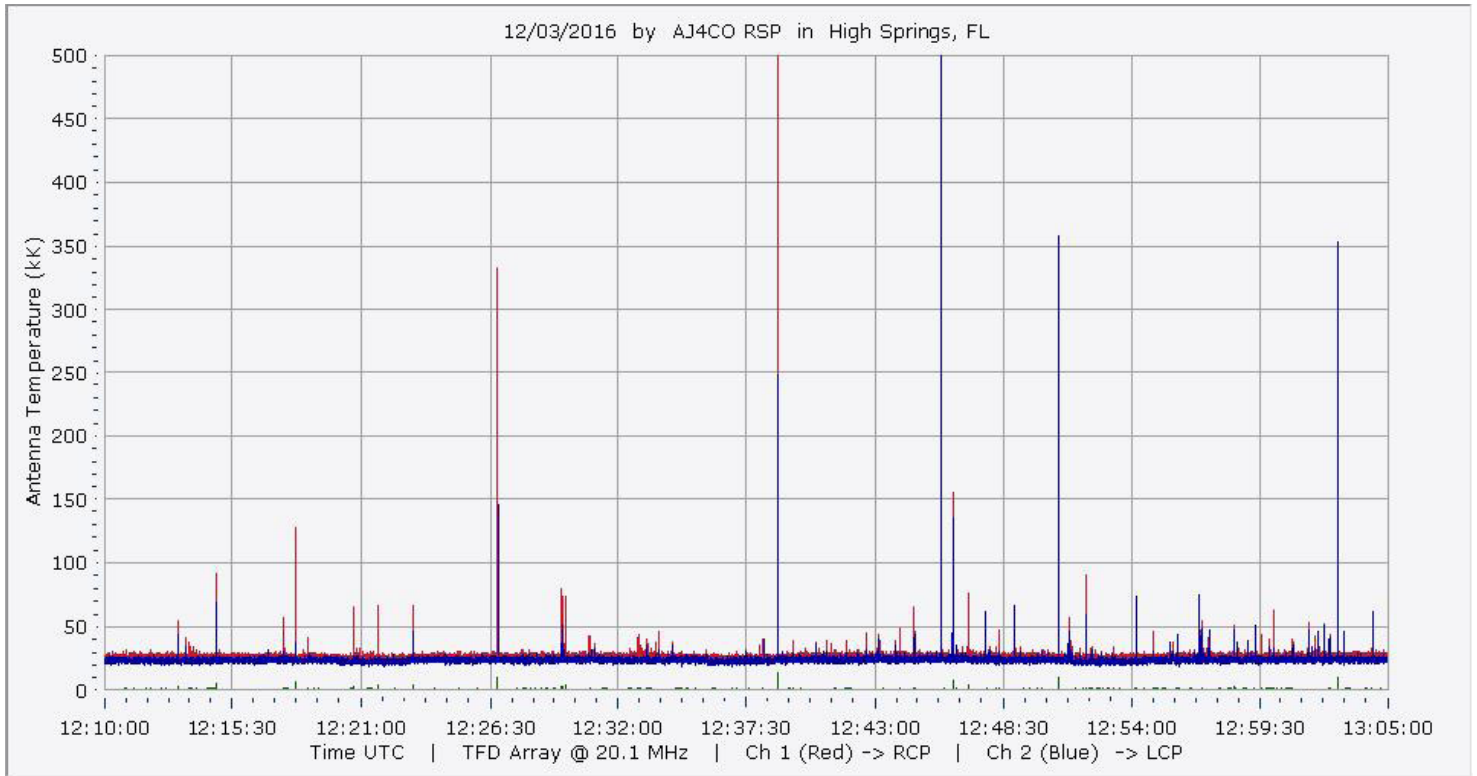


AJ4CO Observatory 03 Dec 2016 - DPS on TFD Array - RCP-LCP - Correction Array 2014 12 18 B.csv - Offset 50 Gain 2.0

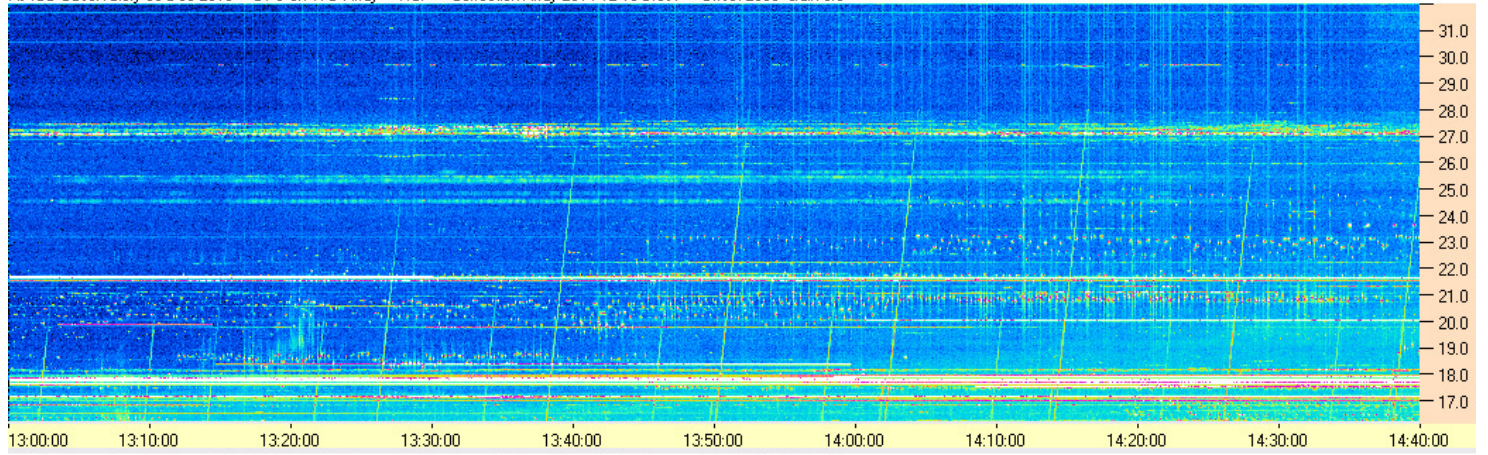


AJ4CO Observatory 03 Dec 2016 - DPS on TFD Array - LCP-RCP - Correction Array 2014 12 18 B.csv - Offset 50 Gain 2.0

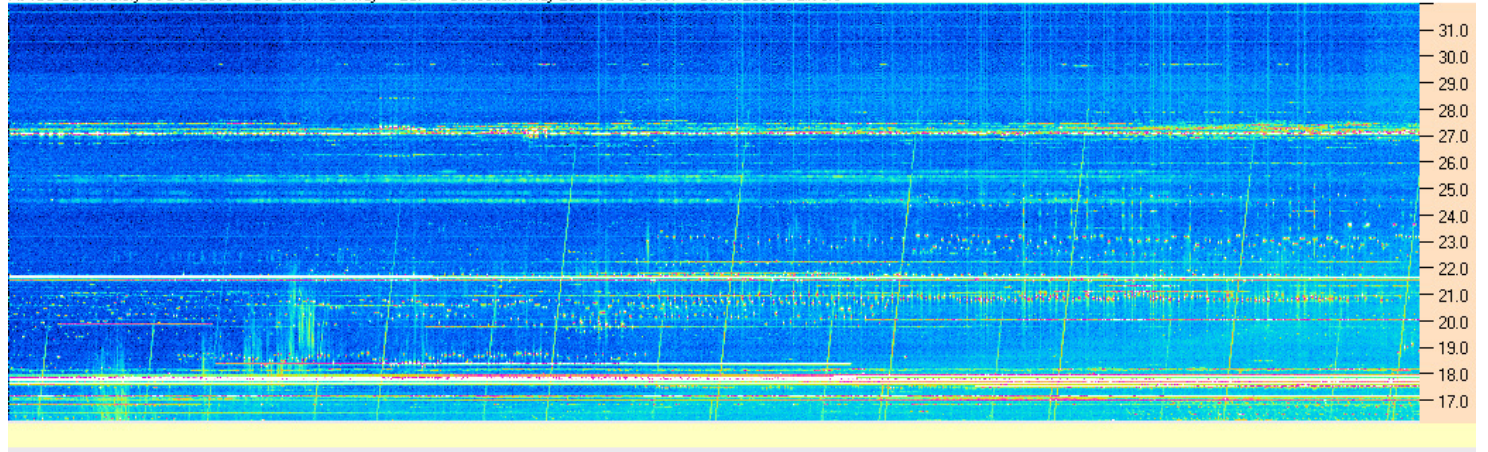




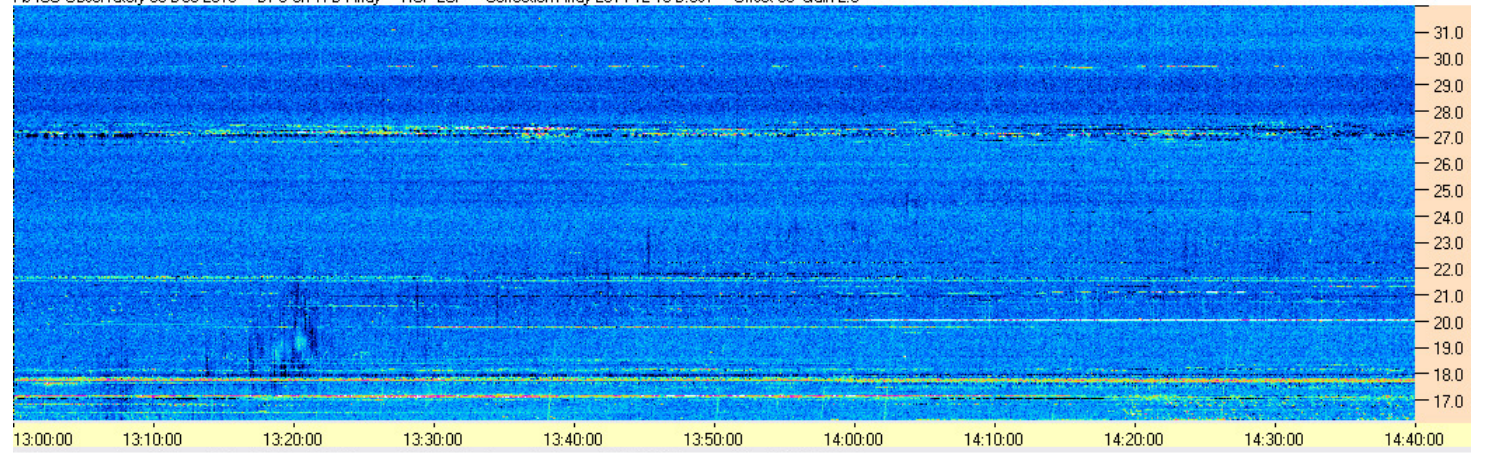
AJ4CO Observatory 03 Dec 2016 - DPS on TFD Array - RCP - Correction Array 2014 12 18 B.csv - Offset 2050 Gain 5.0



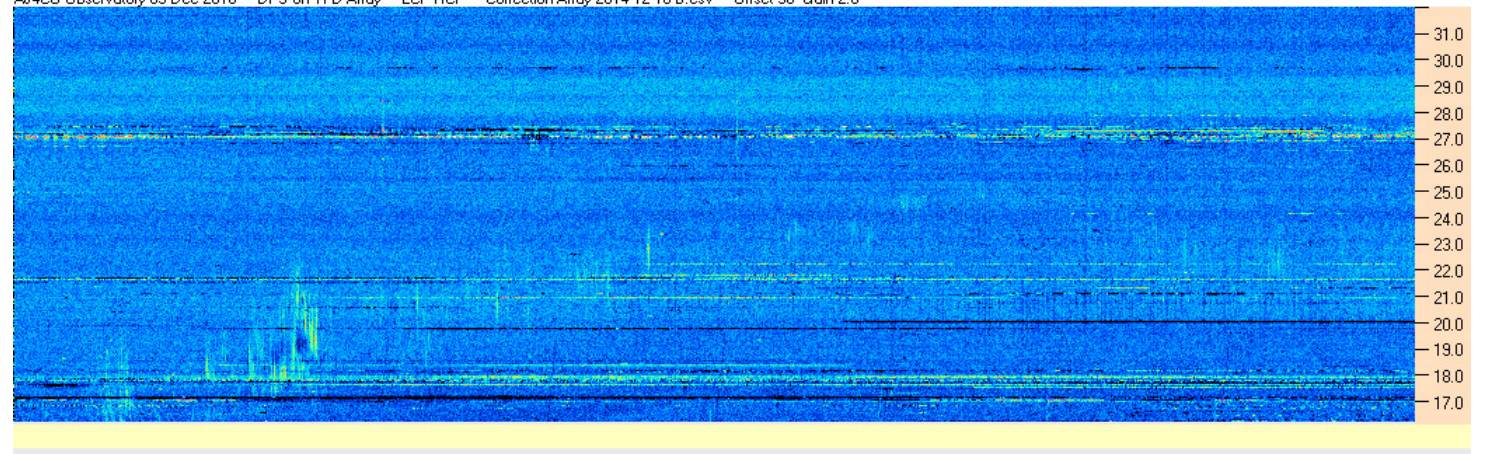
AJ4CO Observatory 03 Dec 2016 - DPS on TFD Array - LCP - Correction Array 2014 12 18 B.csv - Offset 2050 Gain 5.0

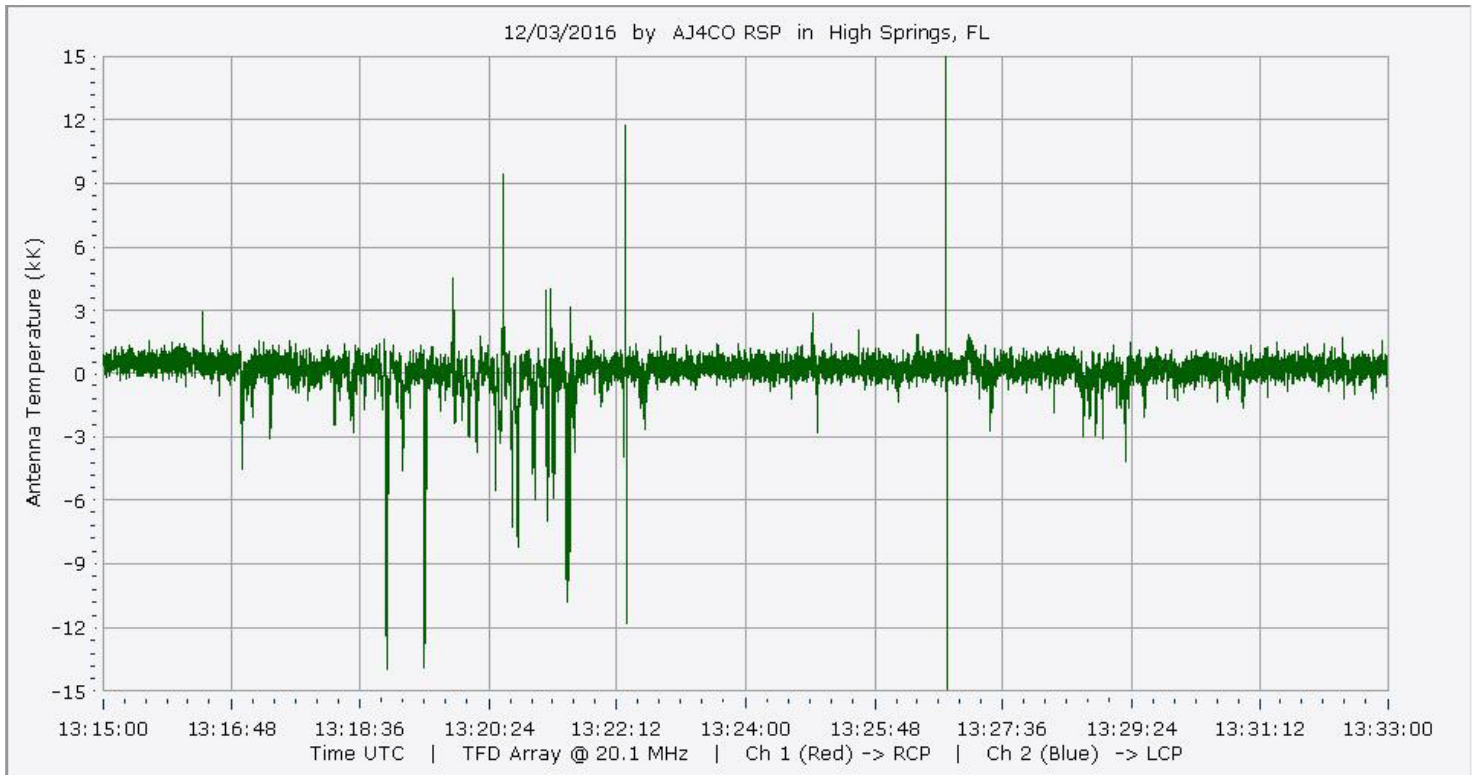
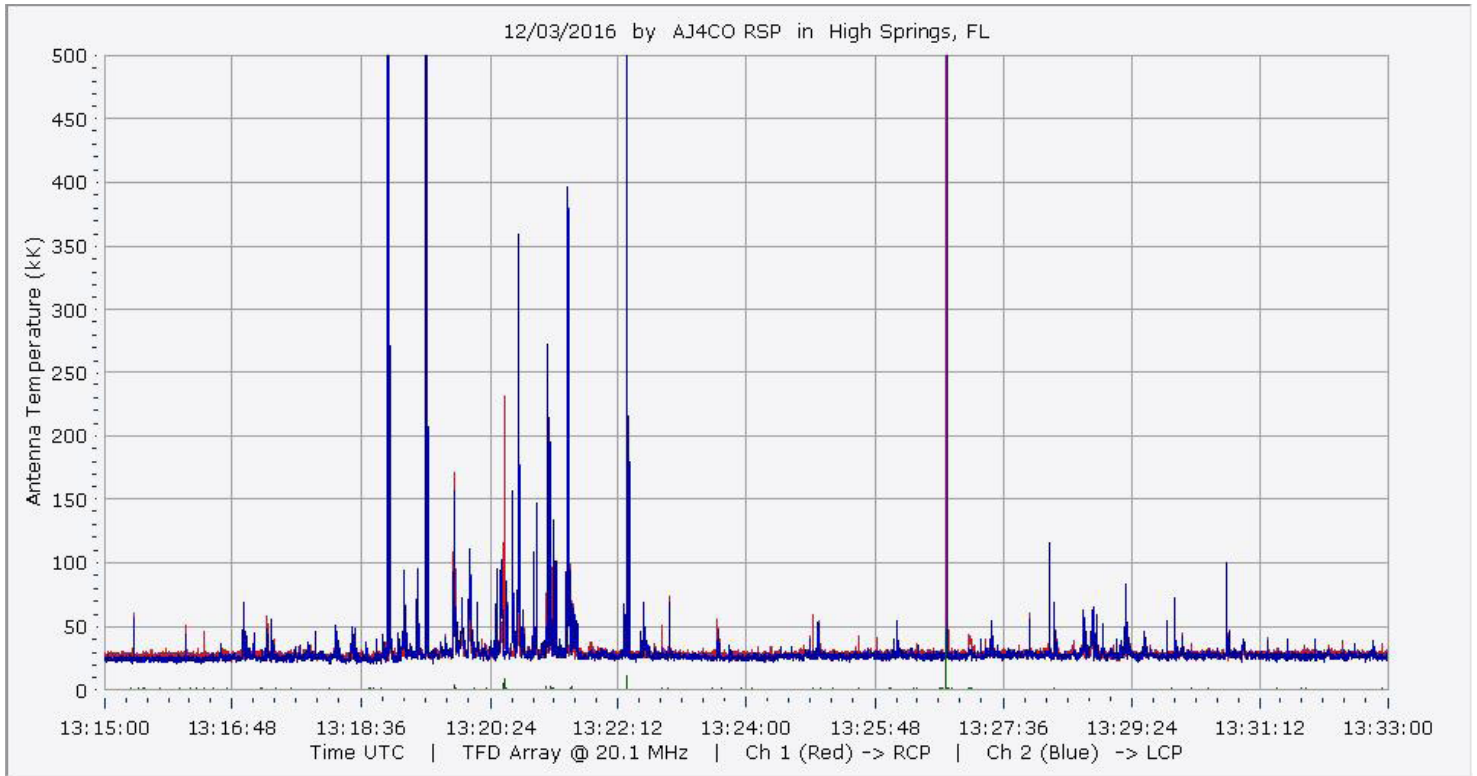


AJ4CO Observatory 03 Dec 2016 - DPS on TFD Array - RCP-LCP - Correction Array 2014 12 18 B.csv - Offset 50 Gain 2.0

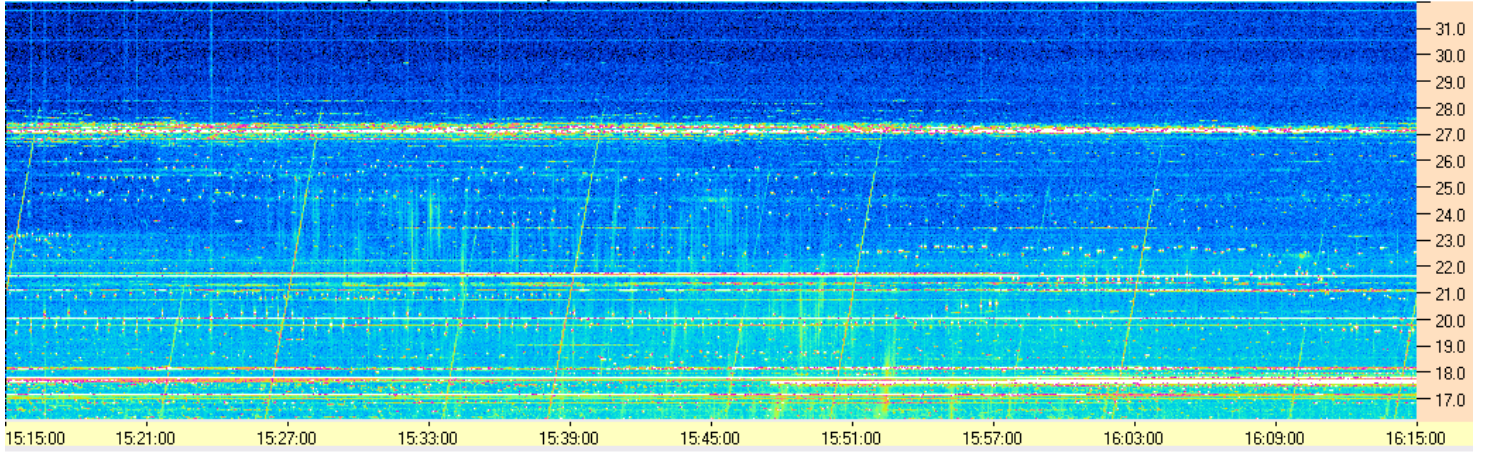


AJ4CO Observatory 03 Dec 2016 - DPS on TFD Array - LCP-RCP - Correction Array 2014 12 18 B.csv - Offset 50 Gain 2.0

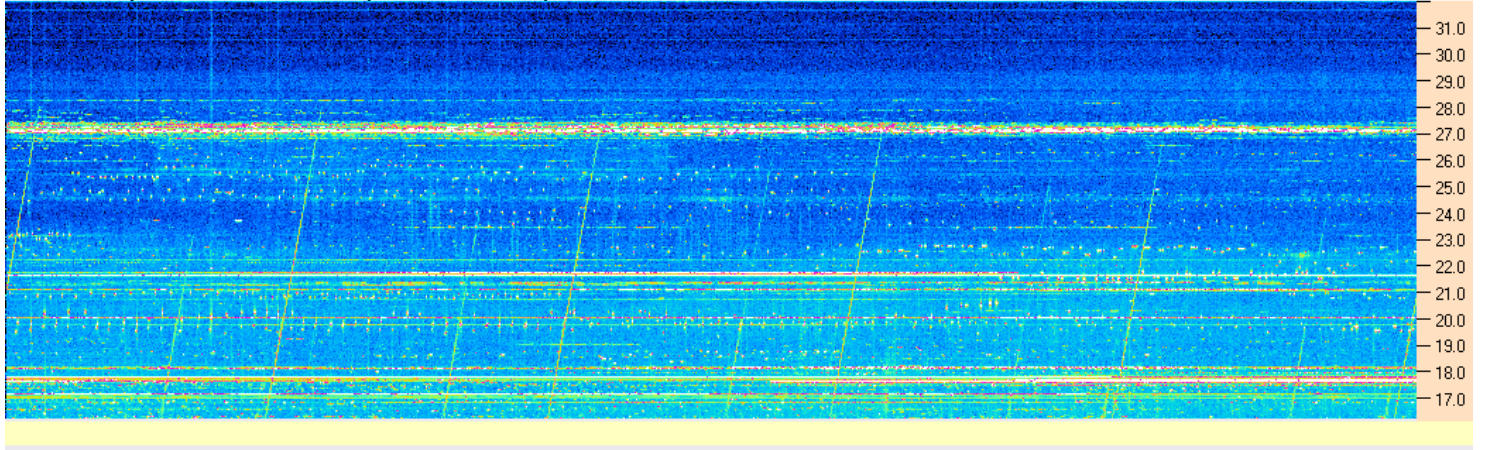




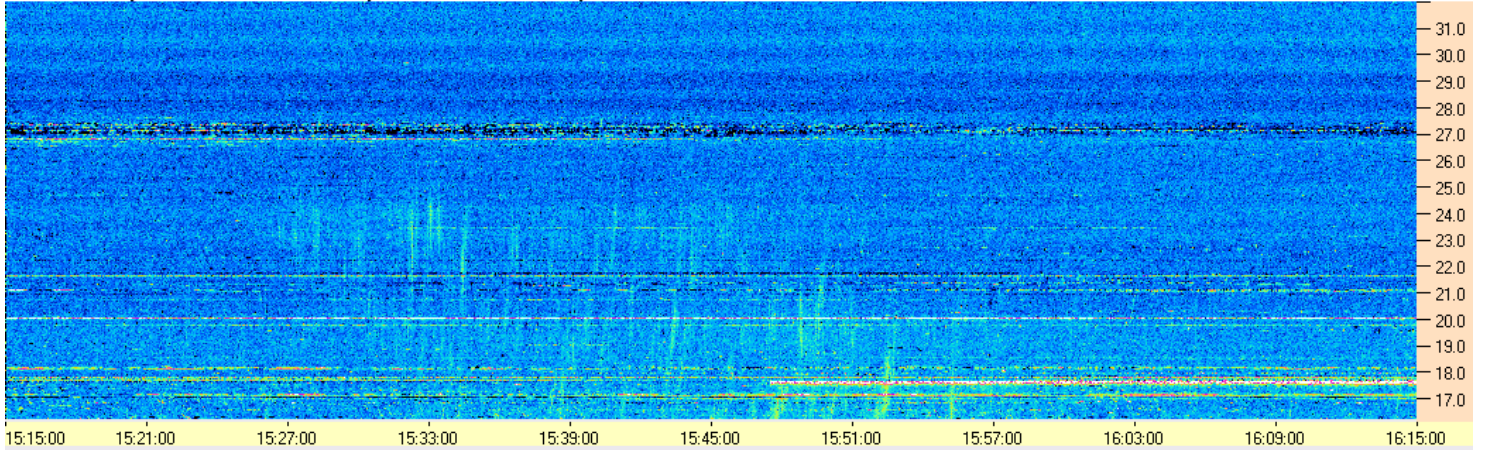
AJ4CO Observatory 03 Dec 2016 - DPS on TFD Array - RCP - Correction Array 2014 12 18 B.csv - Offset 2075 Gain 5.0



AJ4CO Observatory 03 Dec 2016 - DPS on TFD Array - LCP - Correction Array 2014 12 18 B.csv - Offset 2075 Gain 5.0



AJ4CO Observatory 03 Dec 2016 - DPS on TFD Array - RCP-LCP - Correction Array 2014 12 18 B.csv - Offset 50 Gain 2.0



AJ4CO Observatory 03 Dec 2016 - DPS on TFD Array - LCP-RCP - Correction Array 2014 12 18 B.csv - Offset 50 Gain 2.0

