

Decent A/C against daytime band noise.

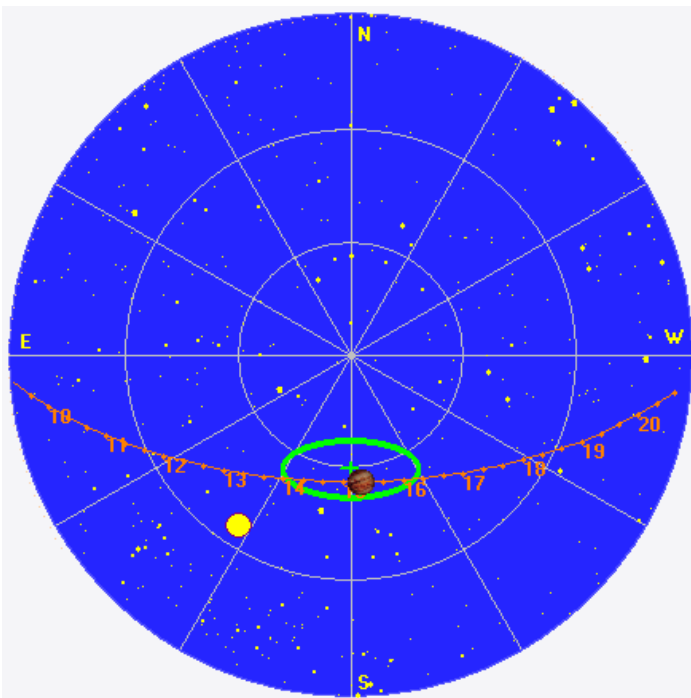
RCP dominant L bursting 1321–1450 UTC from 16 to 28 MHz, vertex late arcs. (Io-A)

LCP dominant L bursting 1544–1716 UTC from 16 to 24 MHz, vertex late arcs. (Io-C)

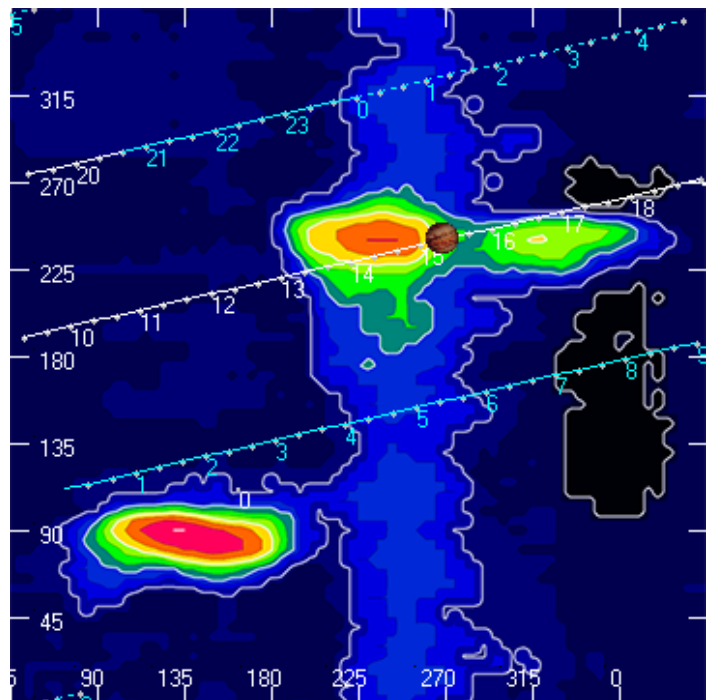
Jupiter was -27° to $+32^\circ$ off axis.

Jupiter was leading the Sun by 33° .

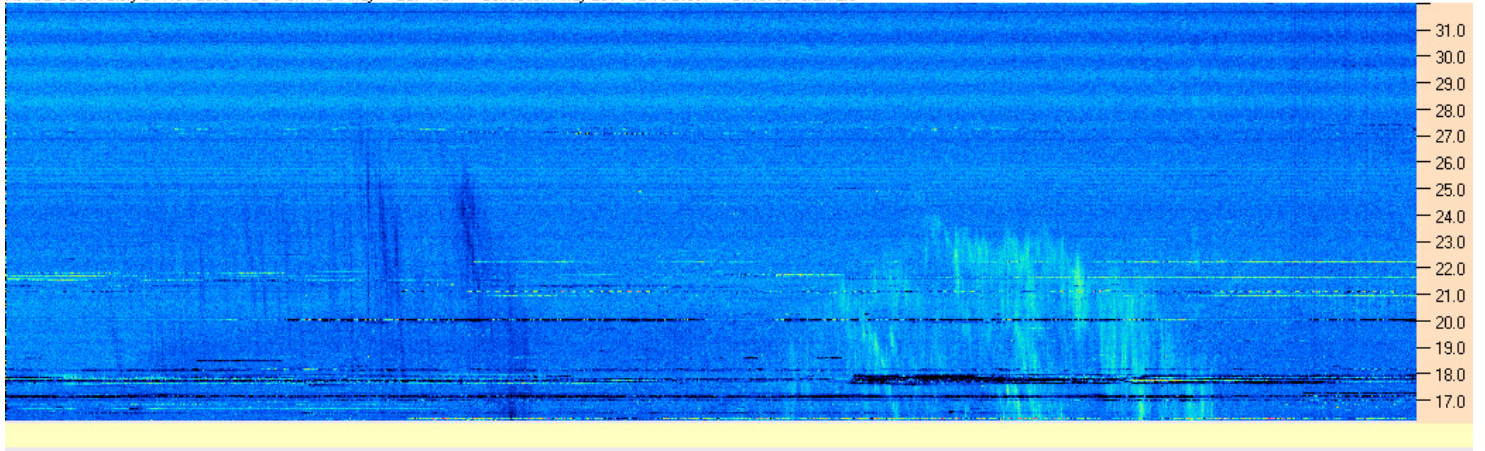
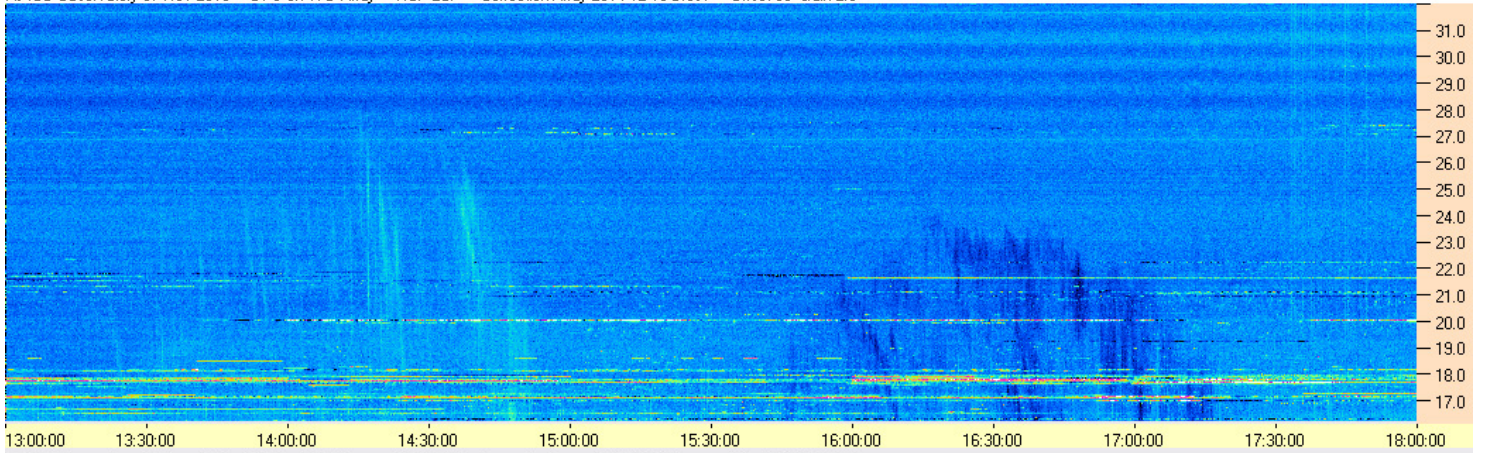
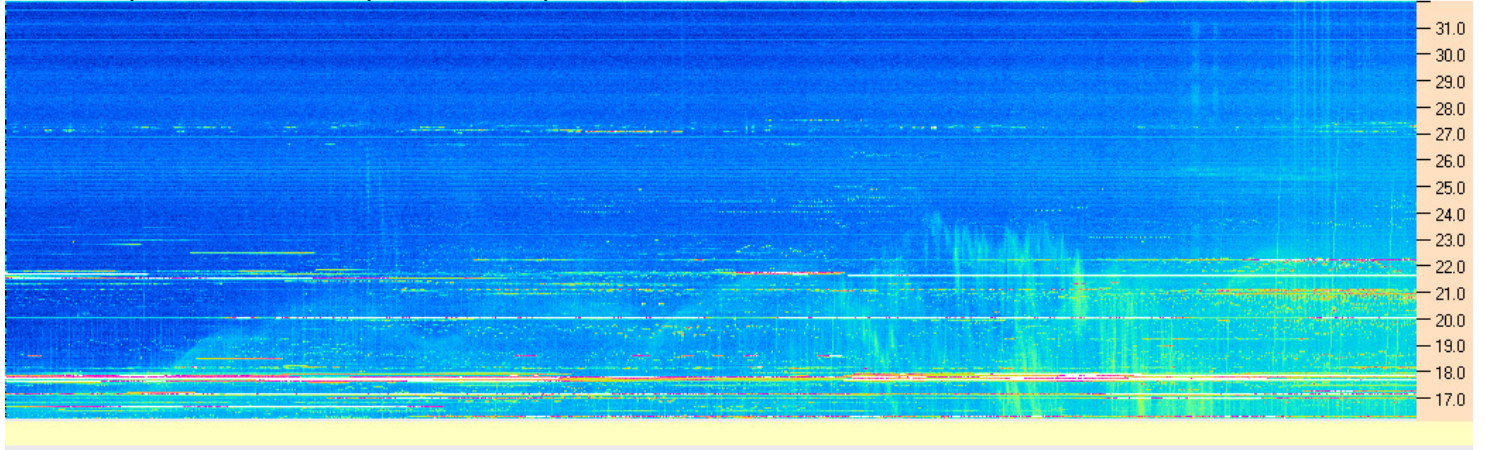
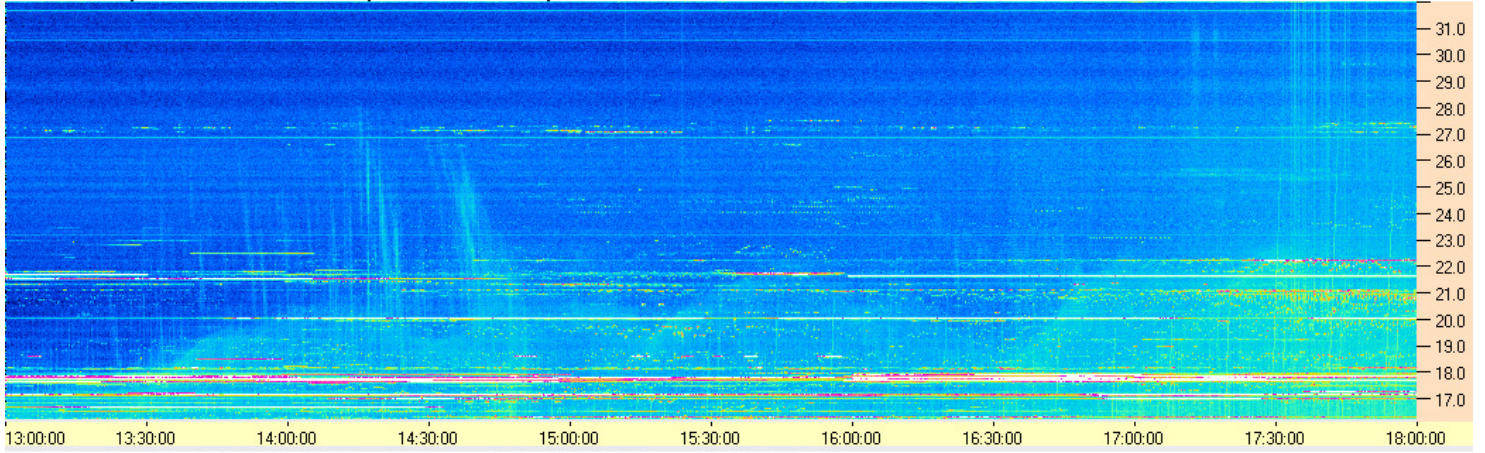
Jupiter's location at midpoint of observed emission (1518 UTC)

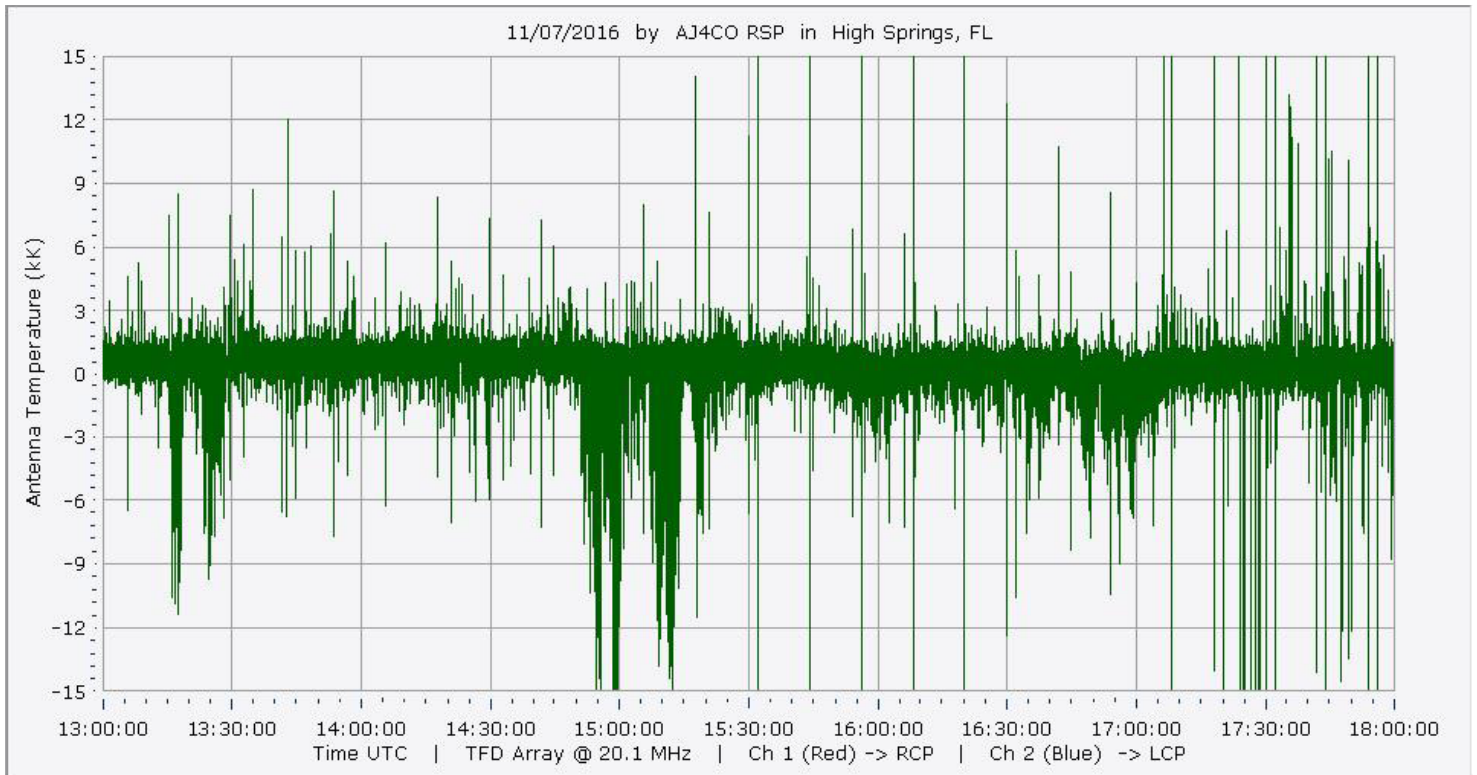
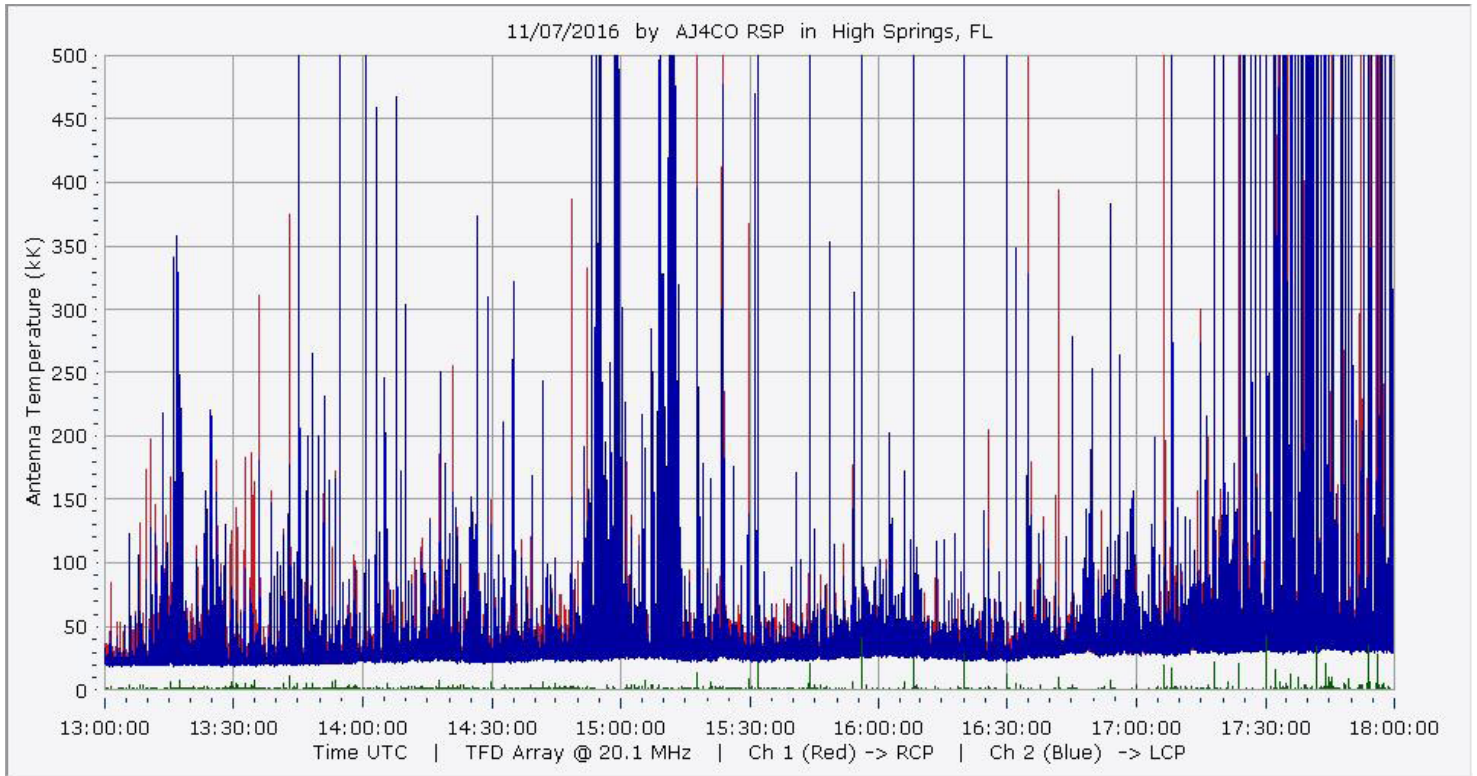


Sky map with array HPBW in green.

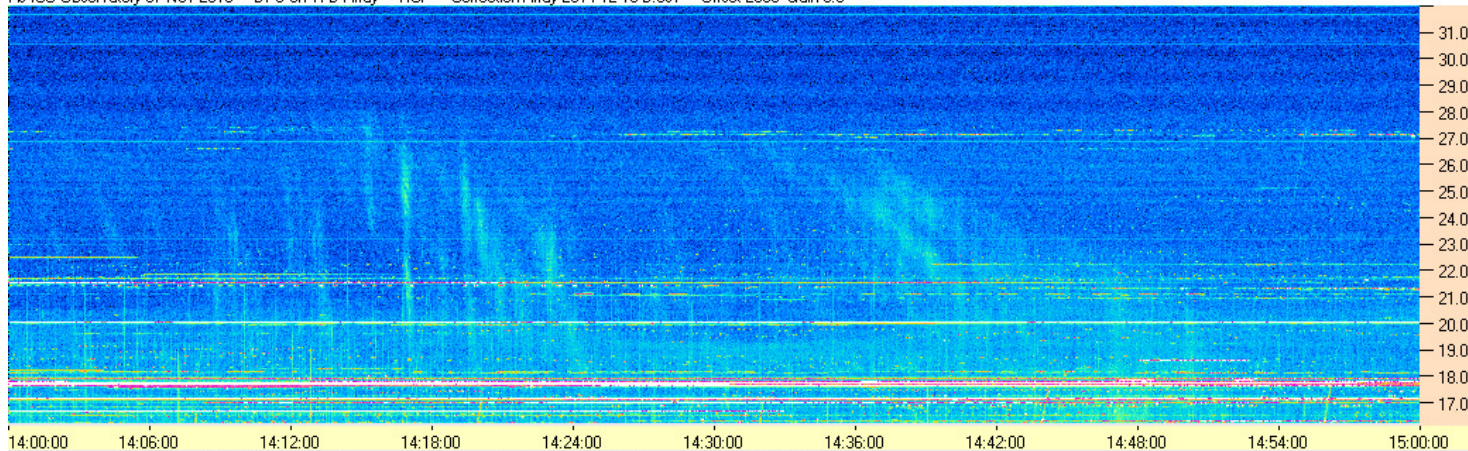


CML-Io phase plane.

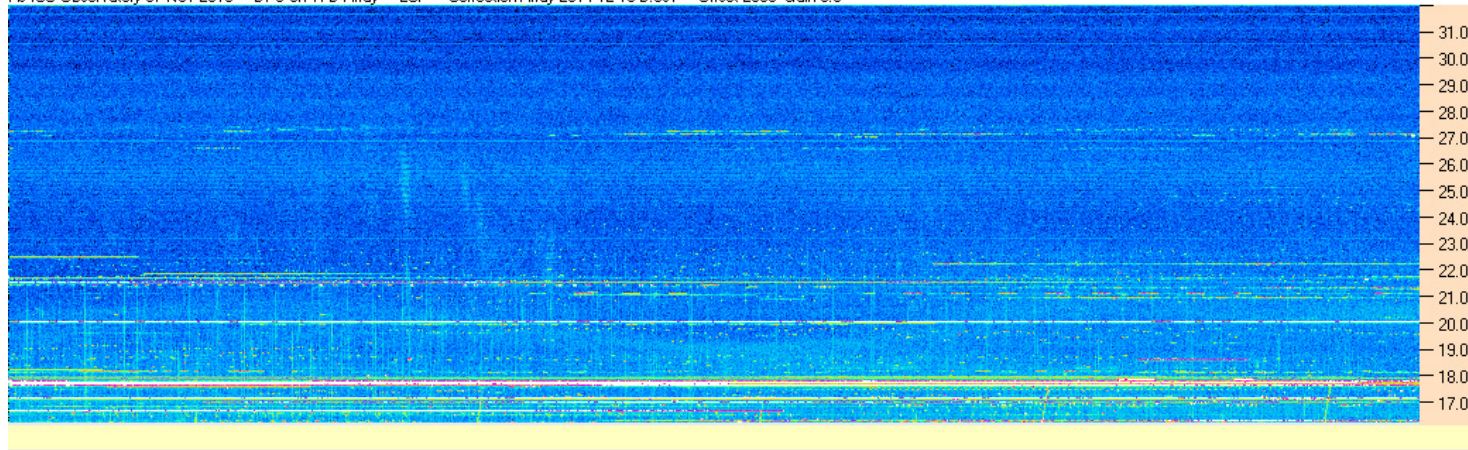




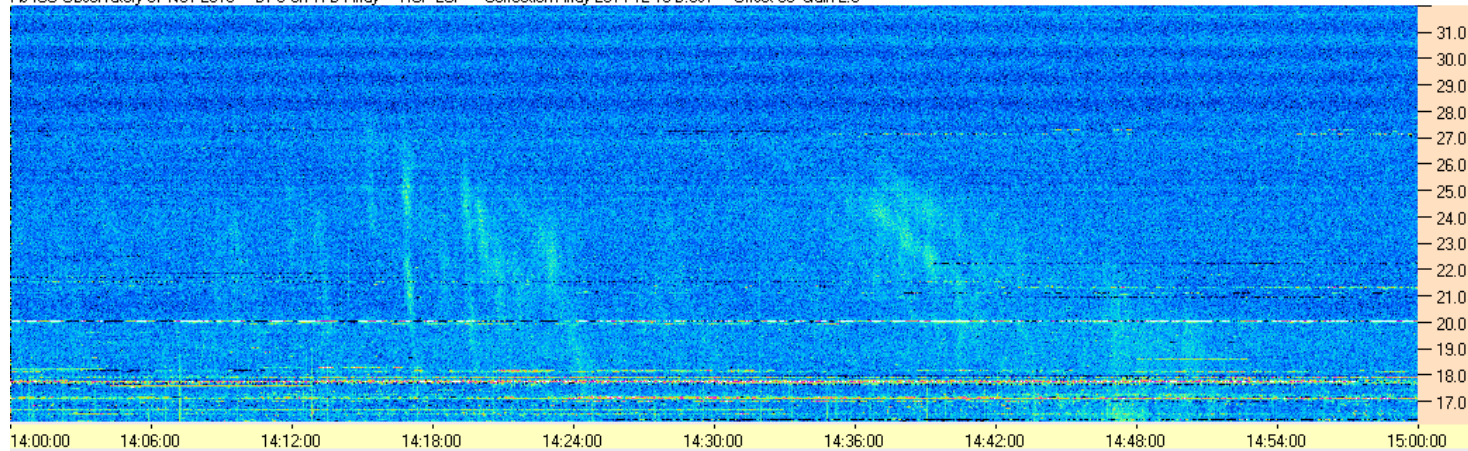
AJ4CO Observatory 07 Nov 2016 - DPS on TFD Array - RCP - Correction Array 2014 12 18 B.csv - Offset 2050 Gain 5.0



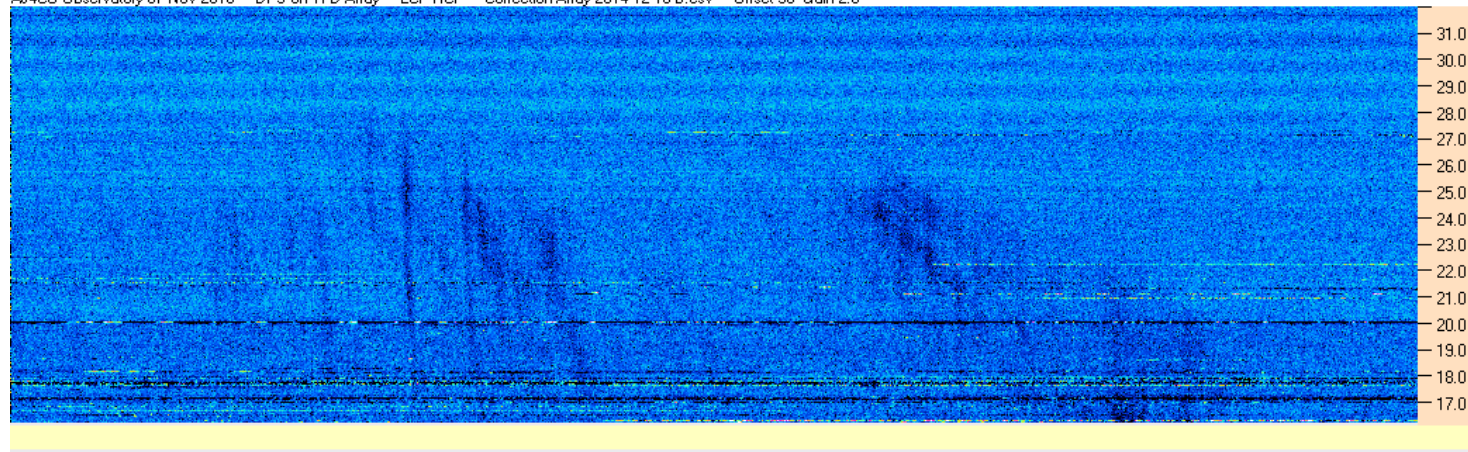
AJ4CO Observatory 07 Nov 2016 - DPS on TFD Array - LCP - Correction Array 2014 12 18 B.csv - Offset 2050 Gain 5.0

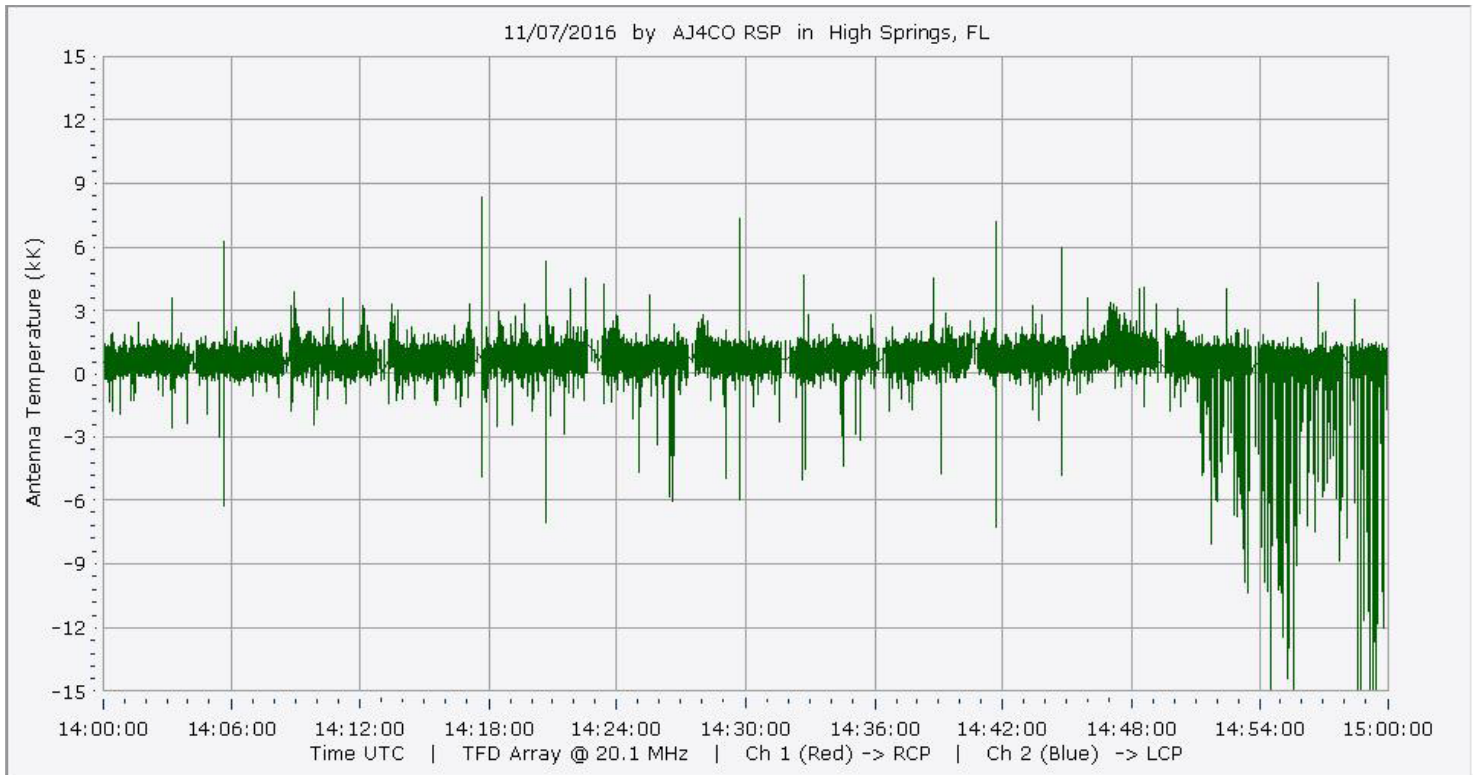
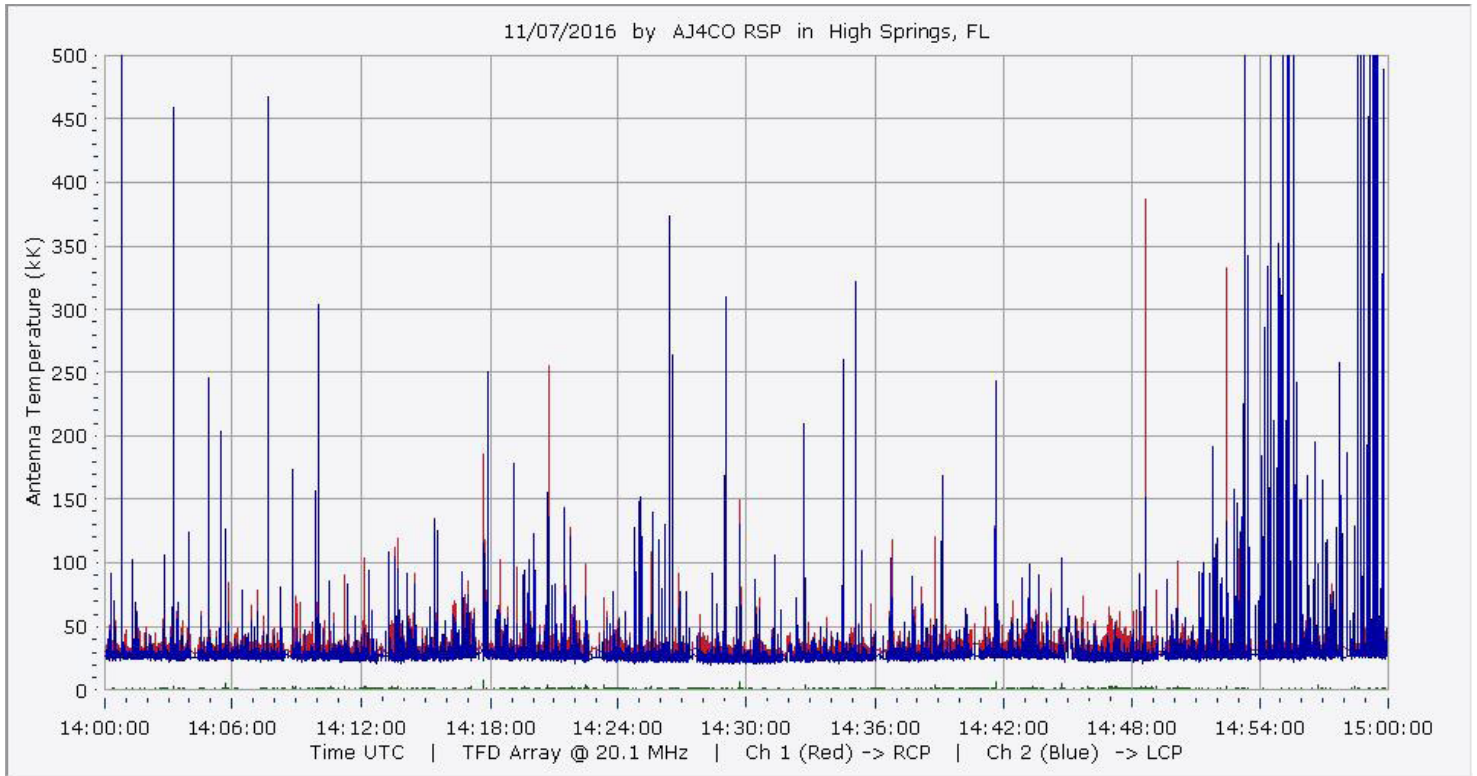


AJ4CO Observatory 07 Nov 2016 - DPS on TFD Array - RCP-LCP - Correction Array 2014 12 18 B.csv - Offset 50 Gain 2.0

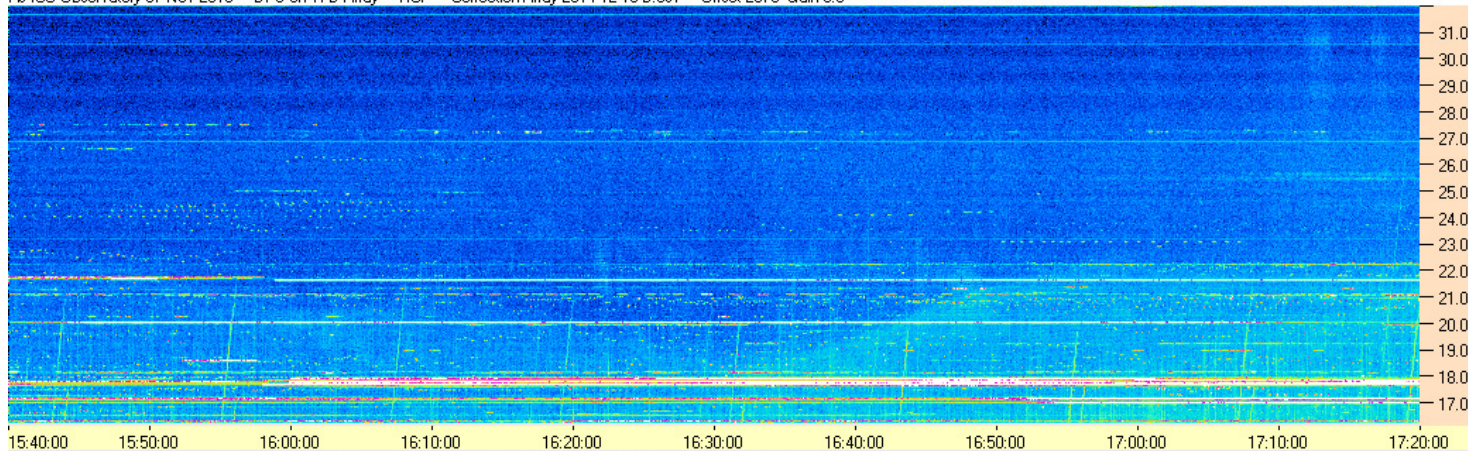


AJ4CO Observatory 07 Nov 2016 - DPS on TFD Array - LCP-RCP - Correction Array 2014 12 18 B.csv - Offset 50 Gain 2.0

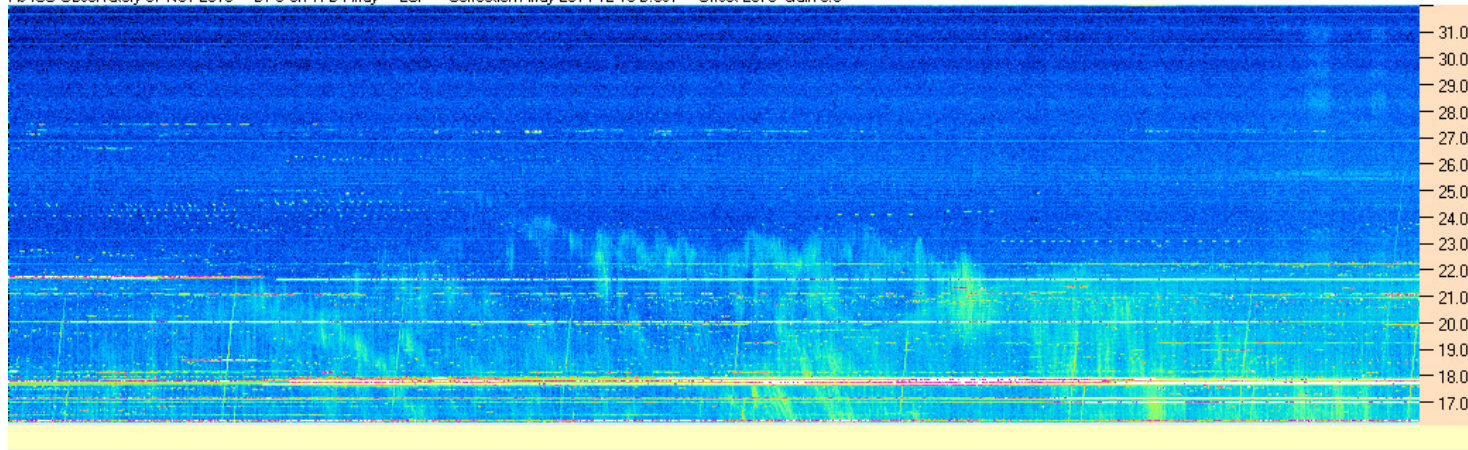




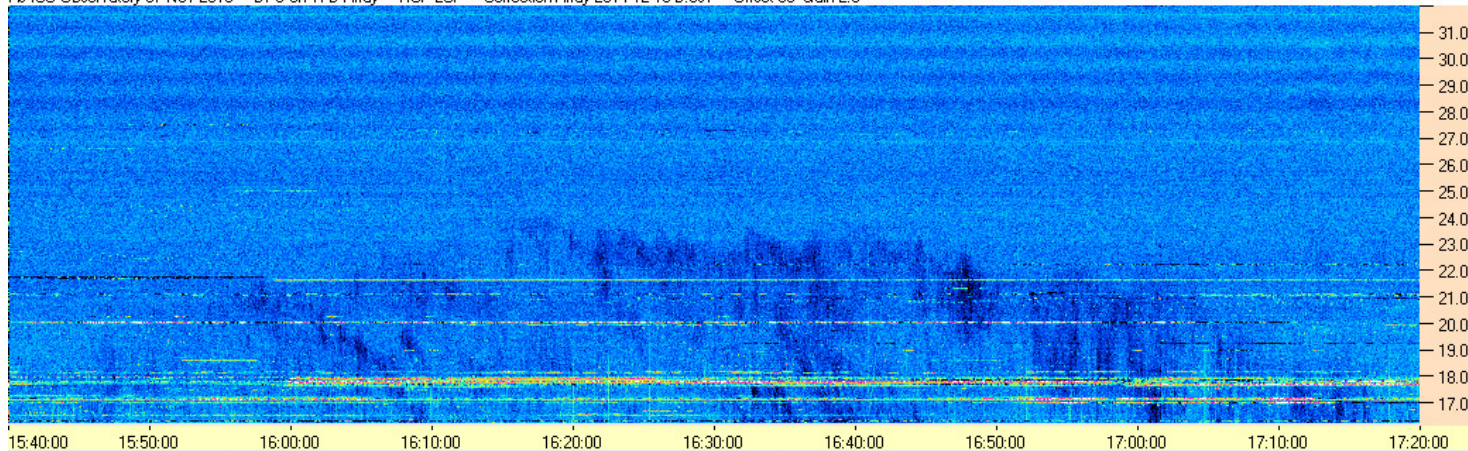
AJ4CO Observatory 07 Nov 2016 - DPS on TFD Array - RCP - Correction Array 2014 12 18 B.csv - Offset 2070 Gain 5.0



AJ4CO Observatory 07 Nov 2016 - DPS on TFD Array - LCP - Correction Array 2014 12 18 B.csv - Offset 2070 Gain 5.0



AJ4CO Observatory 07 Nov 2016 - DPS on TFD Array - RCP-LCP - Correction Array 2014 12 18 B.csv - Offset 50 Gain 2.0



AJ4CO Observatory 07 Nov 2016 - DPS on TFD Array - LCP-RCP - Correction Array 2014 12 18 B.csv - Offset 50 Gain 2.0

