

Some very nice emission on Thursday:

Some extended and strong non-Io-D surrounding some brief non-Io-B, all followed by some Io-A.

Jovian emission is seen against two well-defined terrestrial propagation teepes.

LCP dominant L bursting 1547–1749 UTC from 16 to 26 MHz, positive frequency drift emission envelopes. (non-Io-D)

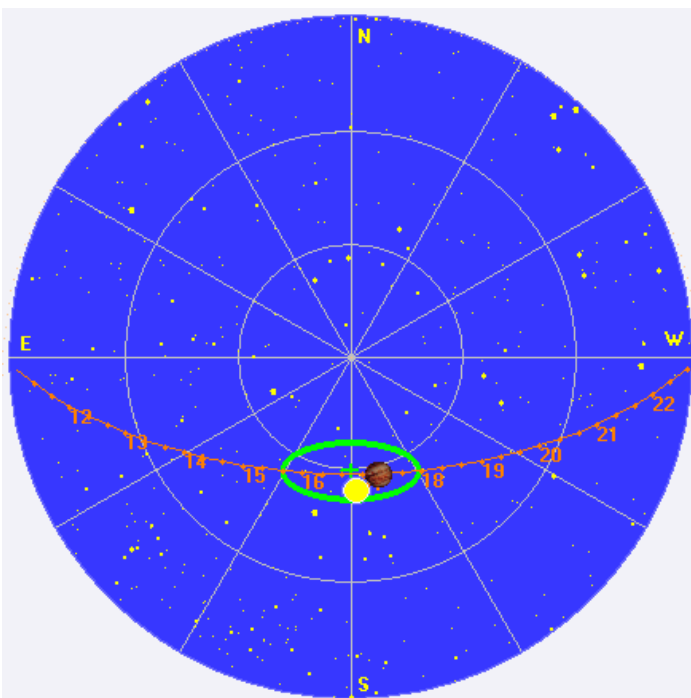
RCP dominant L bursting 1602–1627 UTC from 16 to 22 MHz, positive frequency drift emission envelopes. (non-Io-B)

RCP dominant L bursting 1704–1848 UTC from 16 to 26 MHz, negative frequency drift emission envelopes. (Io-A)

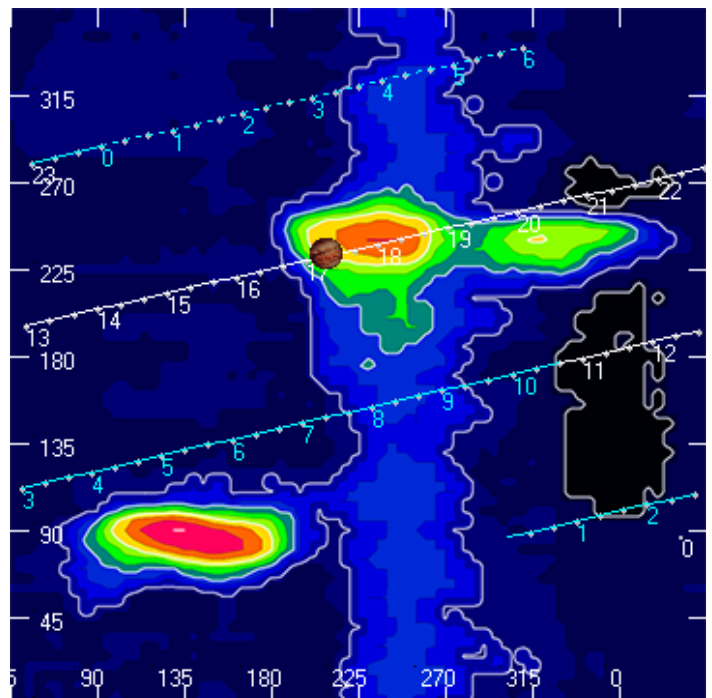
Jupiter was -16° to $+30^\circ$ off axis.

Jupiter was leading the Sun by 8° .

Jupiter's location at midpoint of observed emission (1717 UTC)

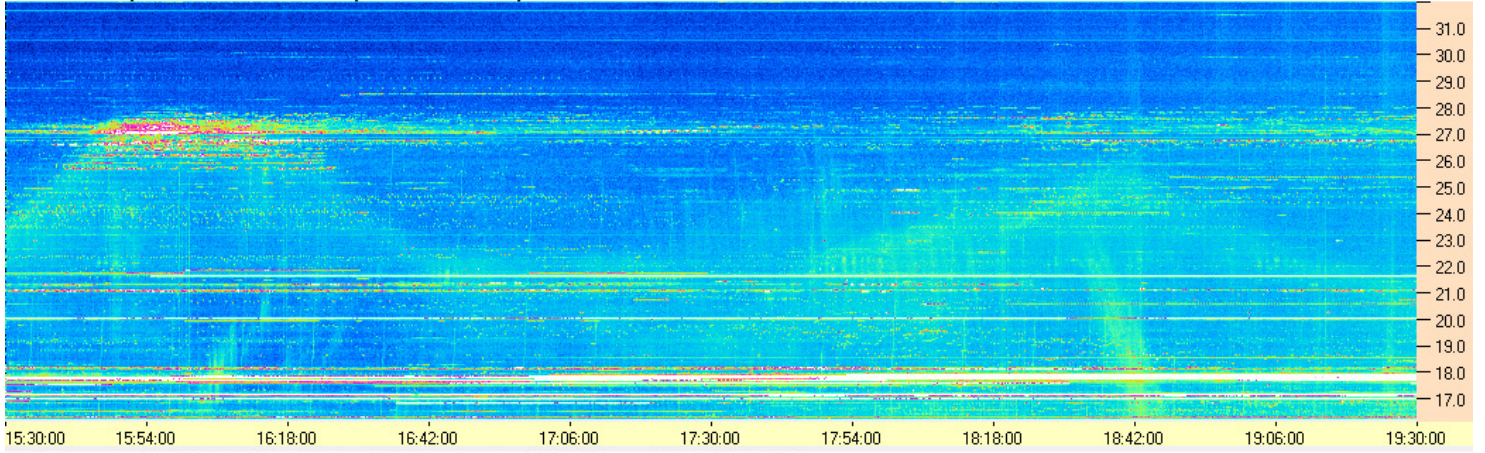


Sky map with array HPBW in green.

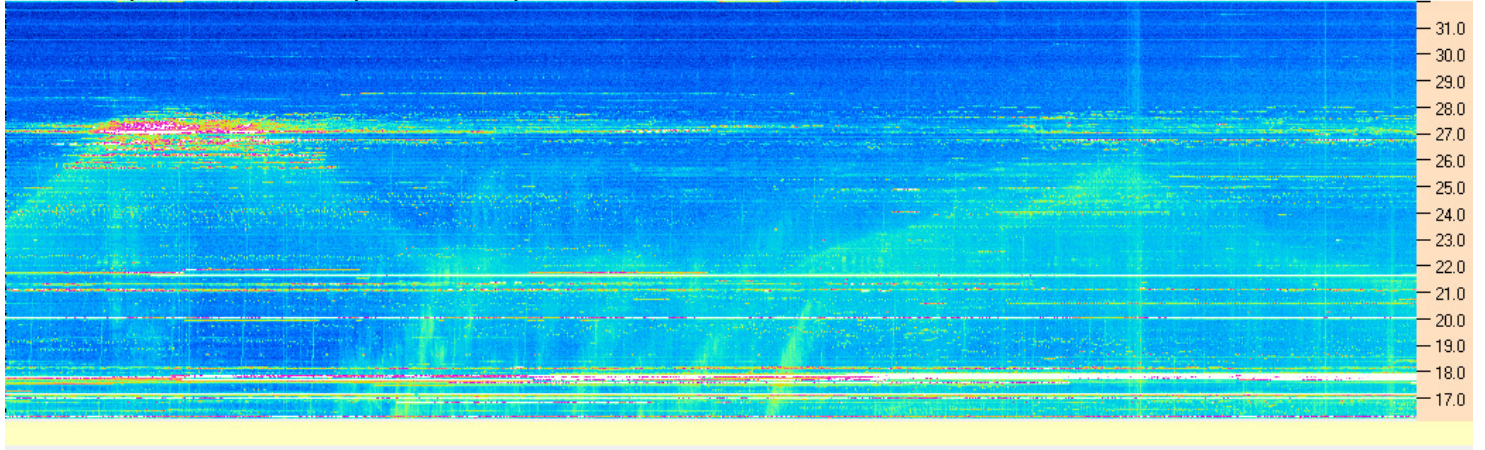


CML-Io phase plane.

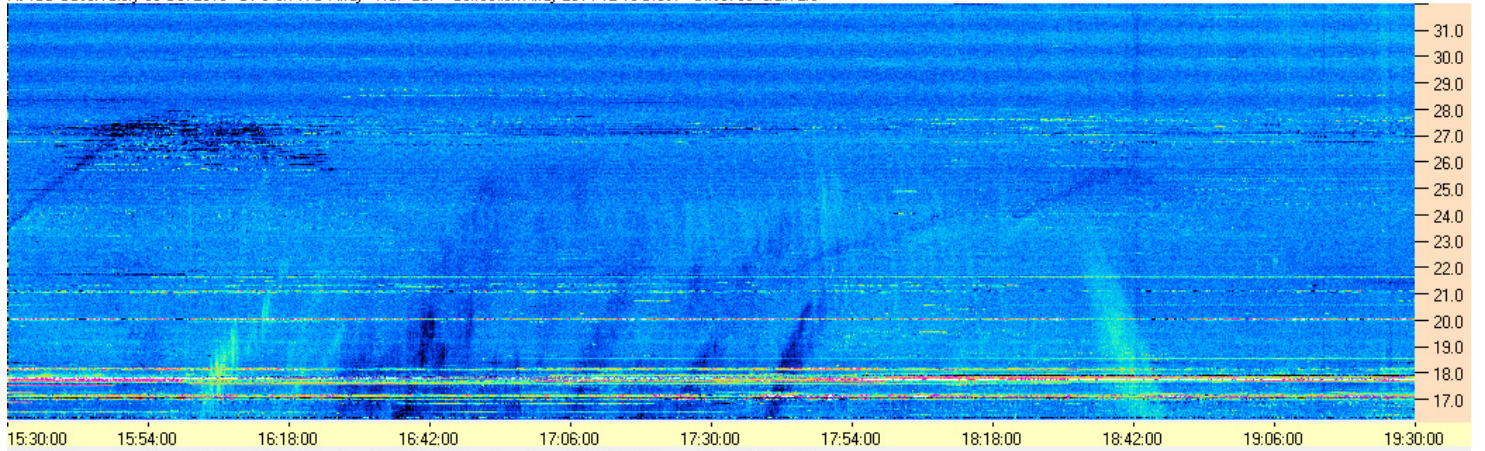
AJ4CO Observatory 06 Oct 2016 - DPS on TFD Array - RCP - Correction Array 2014 12 18 B.csv - Offset 2050 Gain 5.0



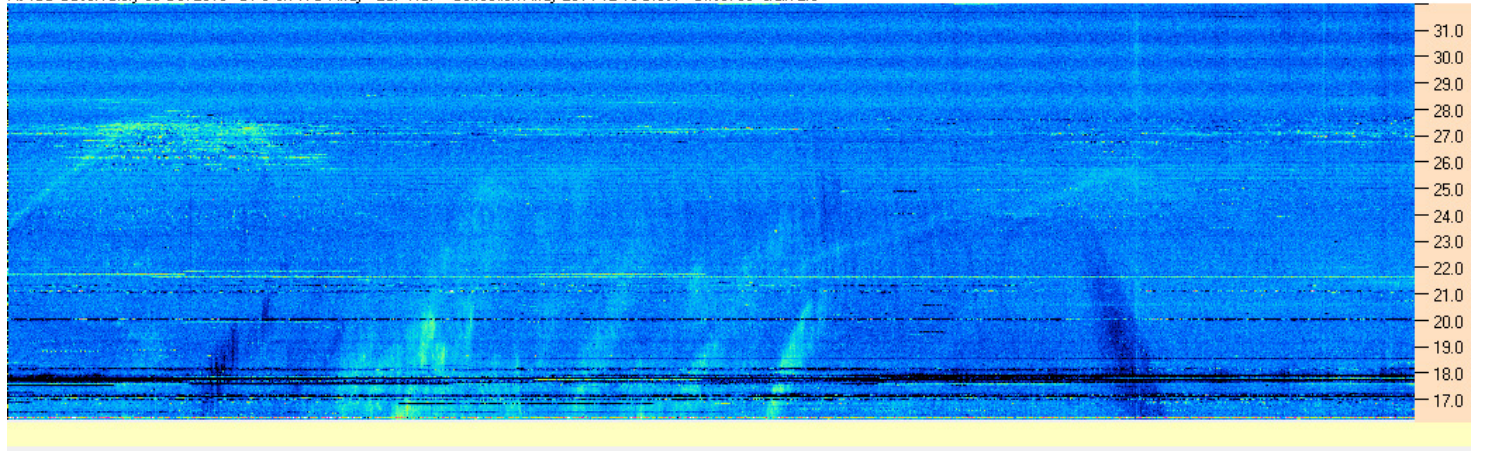
AJ4CO Observatory 06 Oct 2016 - DPS on TFD Array - LCP - Correction Array 2014 12 18 B.csv - Offset 2050 Gain 5.0



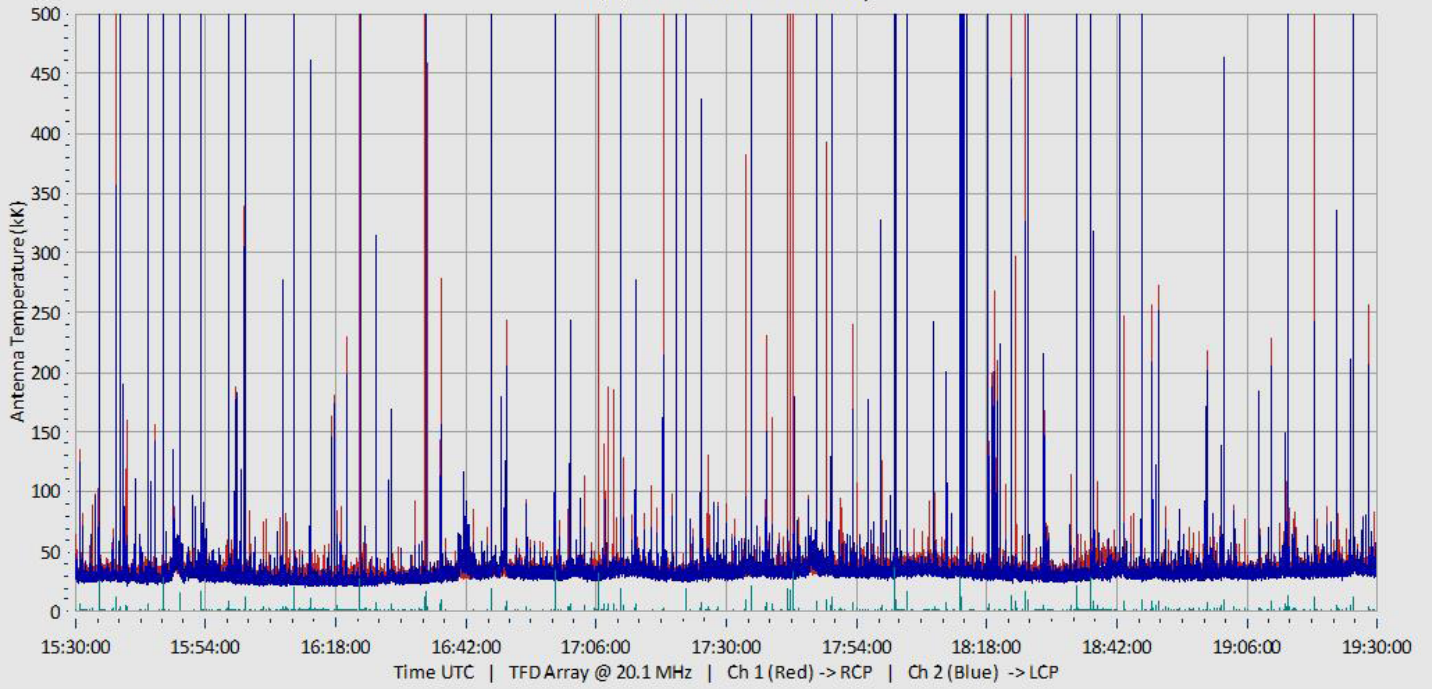
AJ4CO Observatory 06 Oct 2016 - DPS on TFD Array - RCP-LCP - Correction Array 2014 12 18 B.csv - Offset 50 Gain 2.0



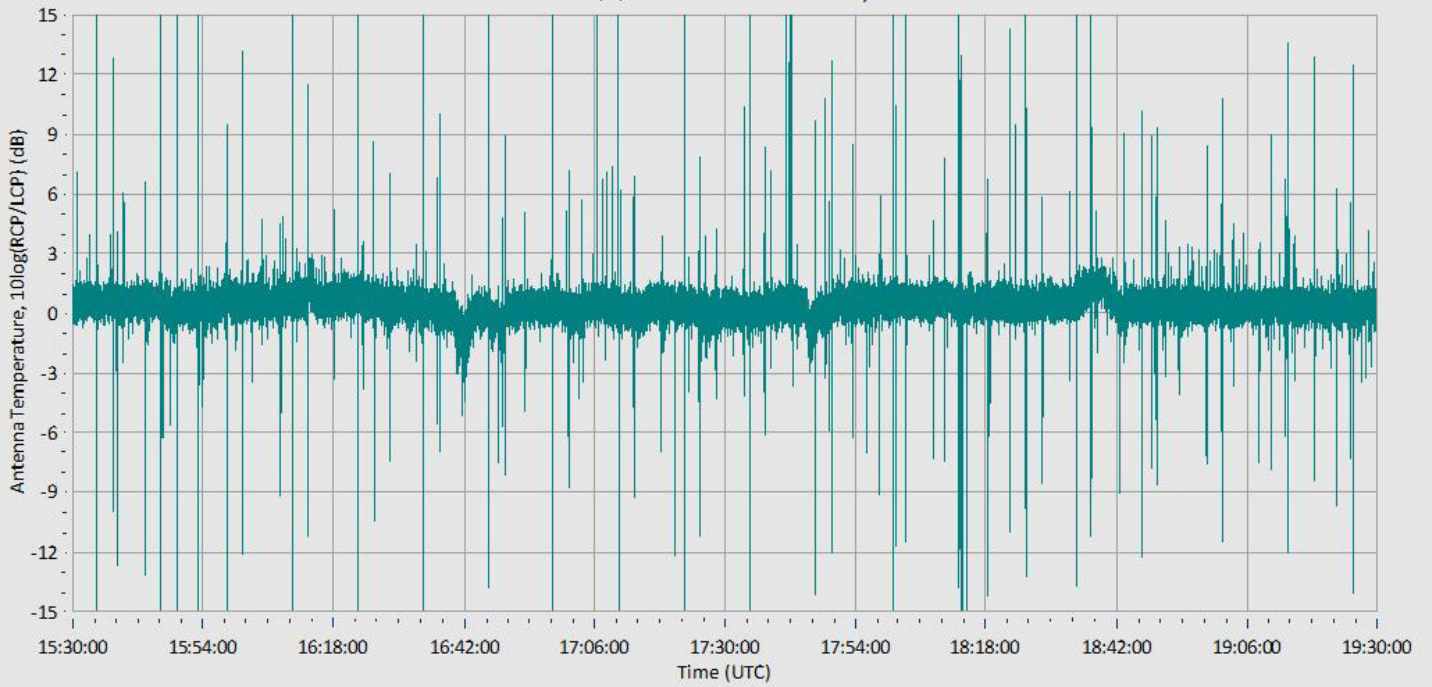
AJ4CO Observatory 06 Oct 2016 - DPS on TFD Array - LCP-RCP - Correction Array 2014 12 18 B.csv - Offset 50 Gain 2.0



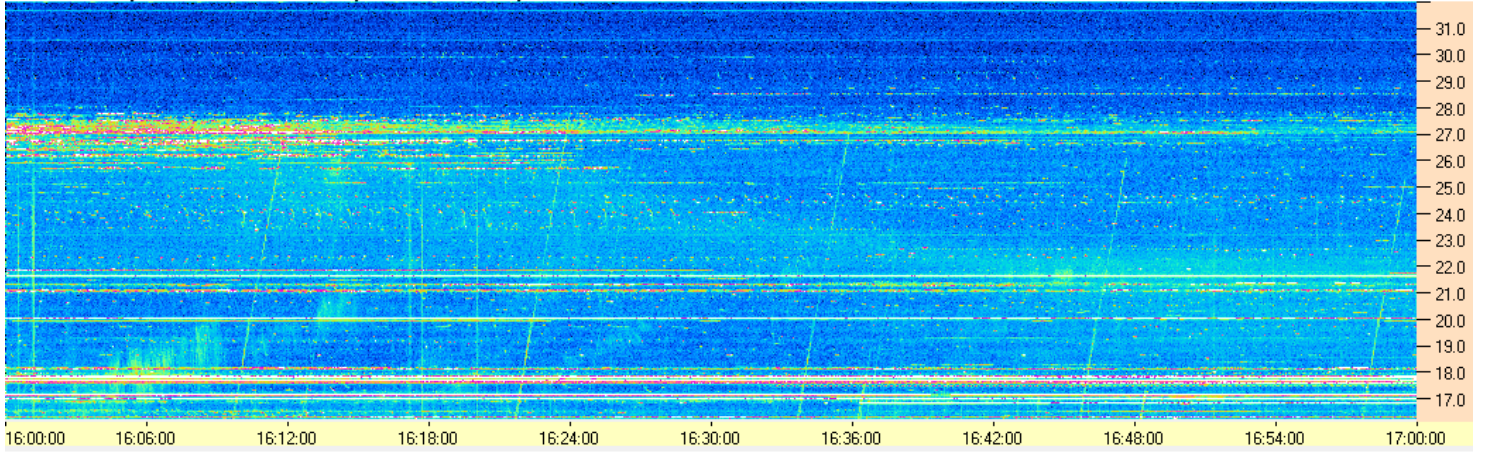
10/6/2016 AJ4CO Observatory



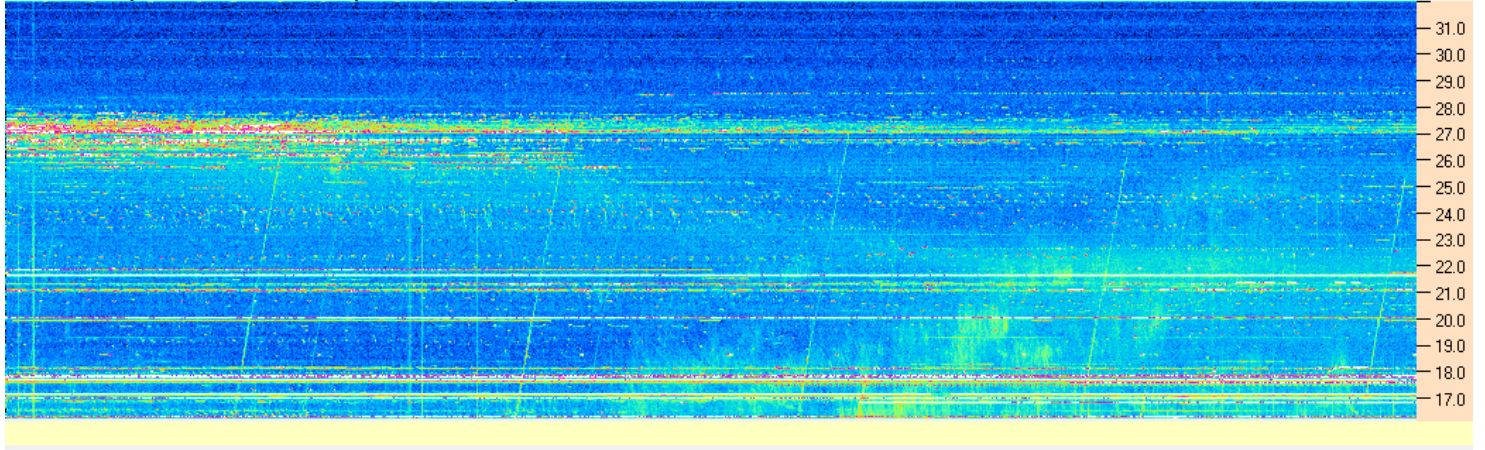
10/6/2016 AJ4CO Observatory



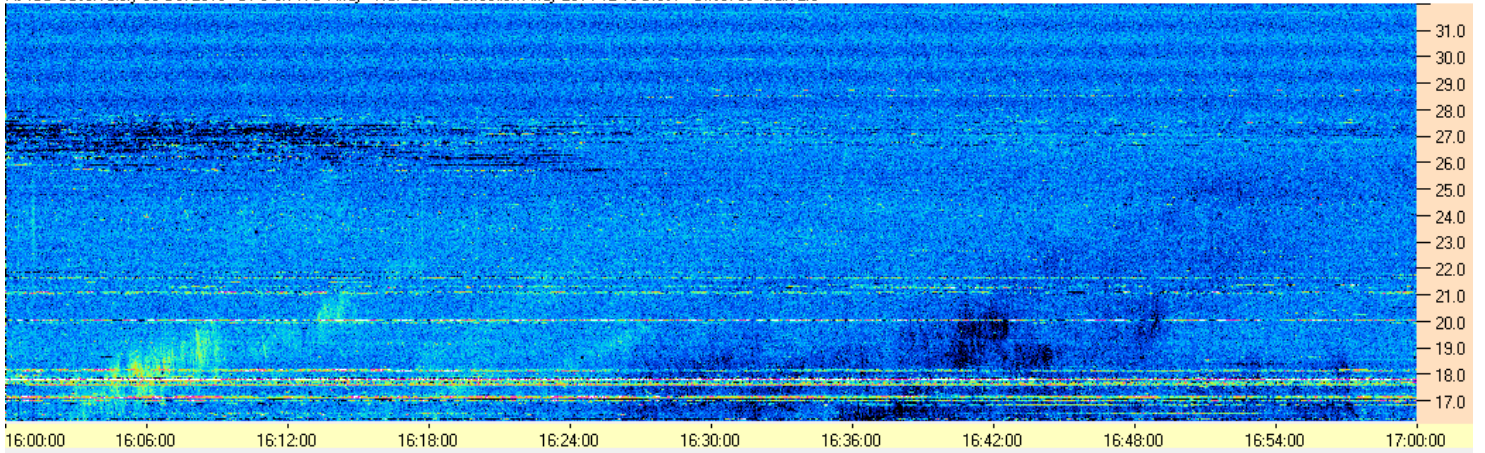
AJ4CO Observatory 06 Oct 2016 - DPS on TFD Array - RCP - Correction Array 2014 12 18 B.csv - Offset 2050 Gain 5.0



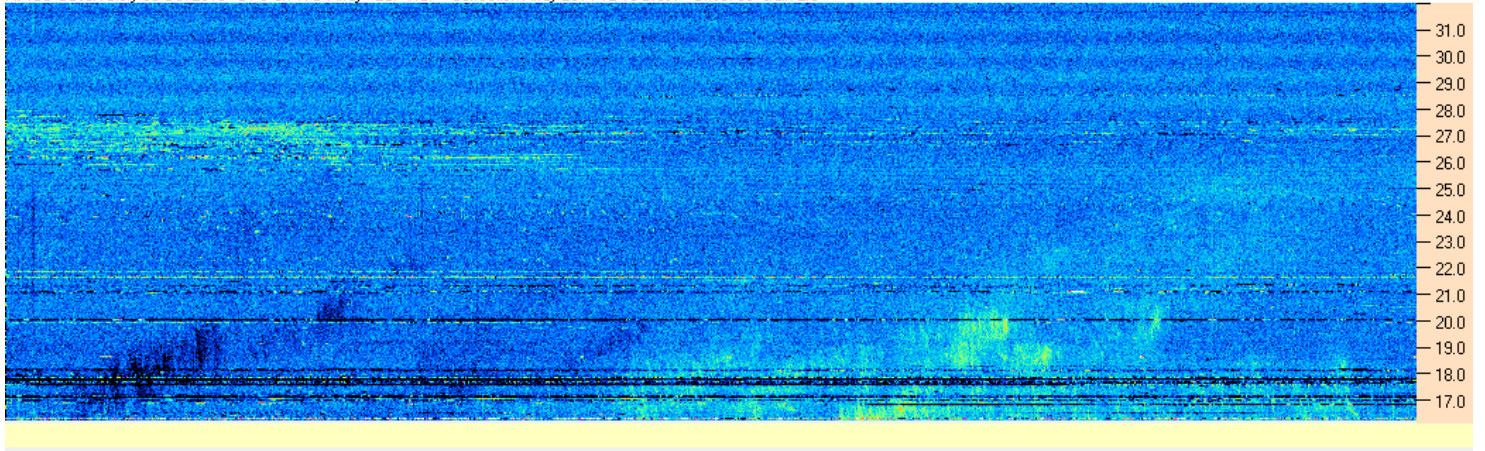
AJ4CO Observatory 06 Oct 2016 - DPS on TFD Array - LCP - Correction Array 2014 12 18 B.csv - Offset 2050 Gain 5.0



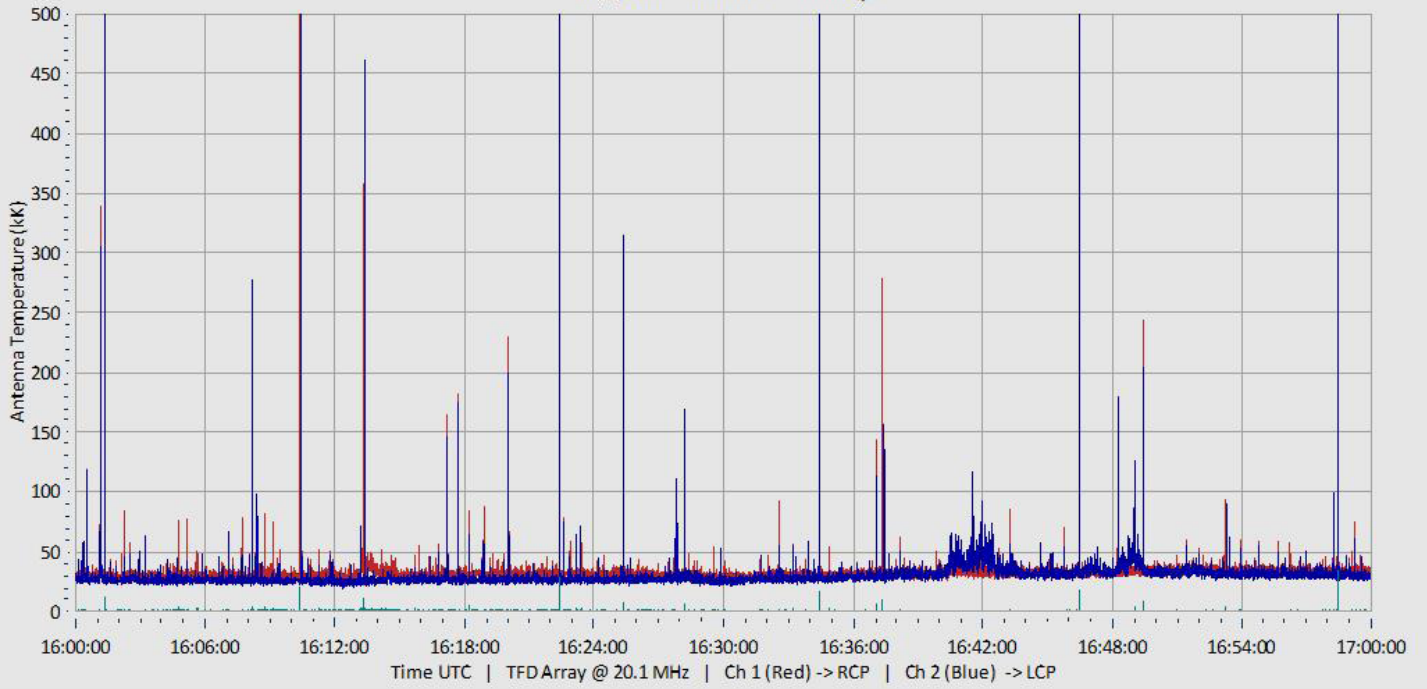
AJ4CO Observatory 06 Oct 2016 - DPS on TFD Array - RCP-LCP - Correction Array 2014 12 18 B.csv - Offset 50 Gain 2.0



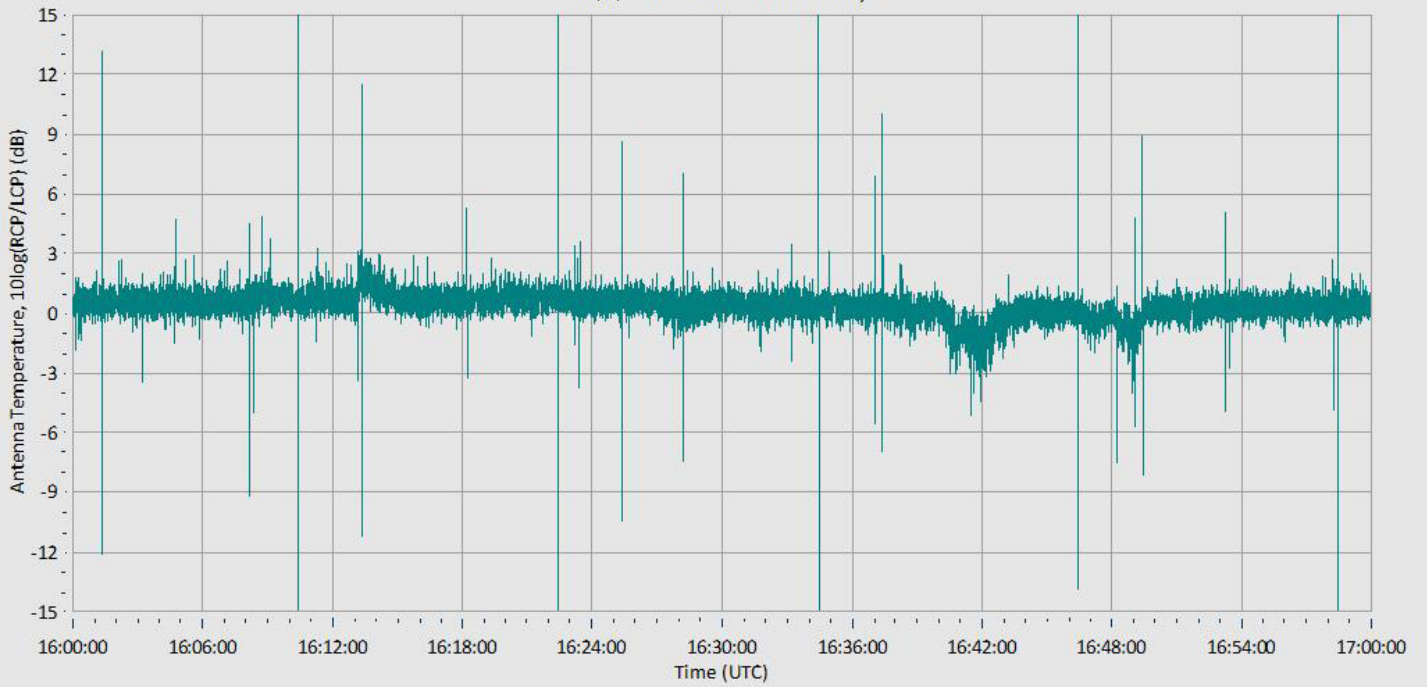
AJ4CO Observatory 06 Oct 2016 - DPS on TFD Array - LCP-RCP - Correction Array 2014 12 18 B.csv - Offset 50 Gain 2.0



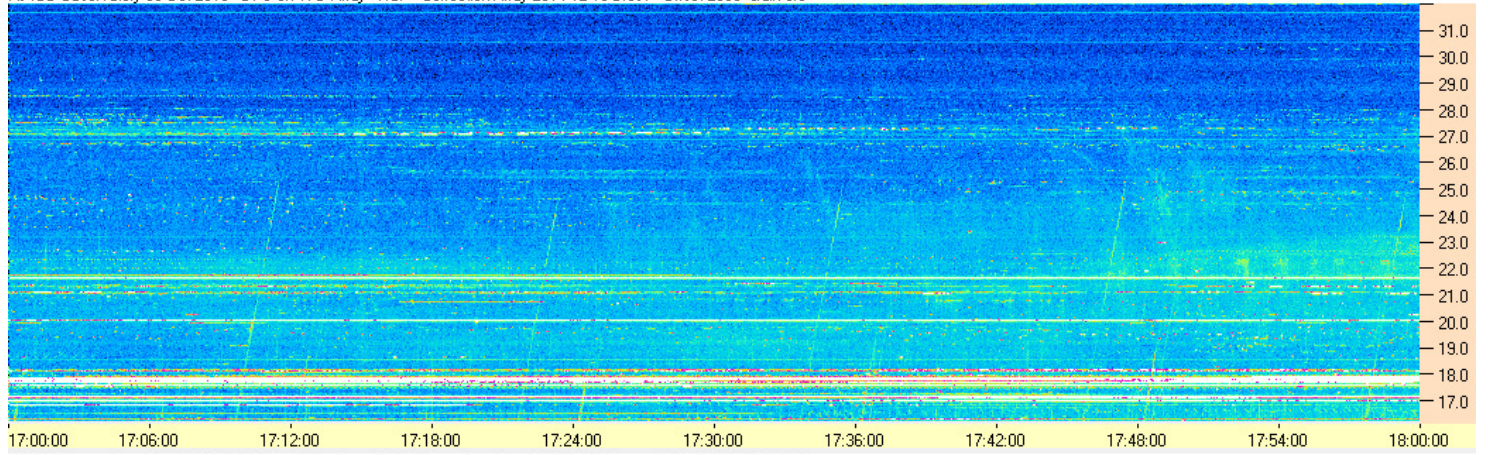
10/6/2016 AJ4CO Observatory



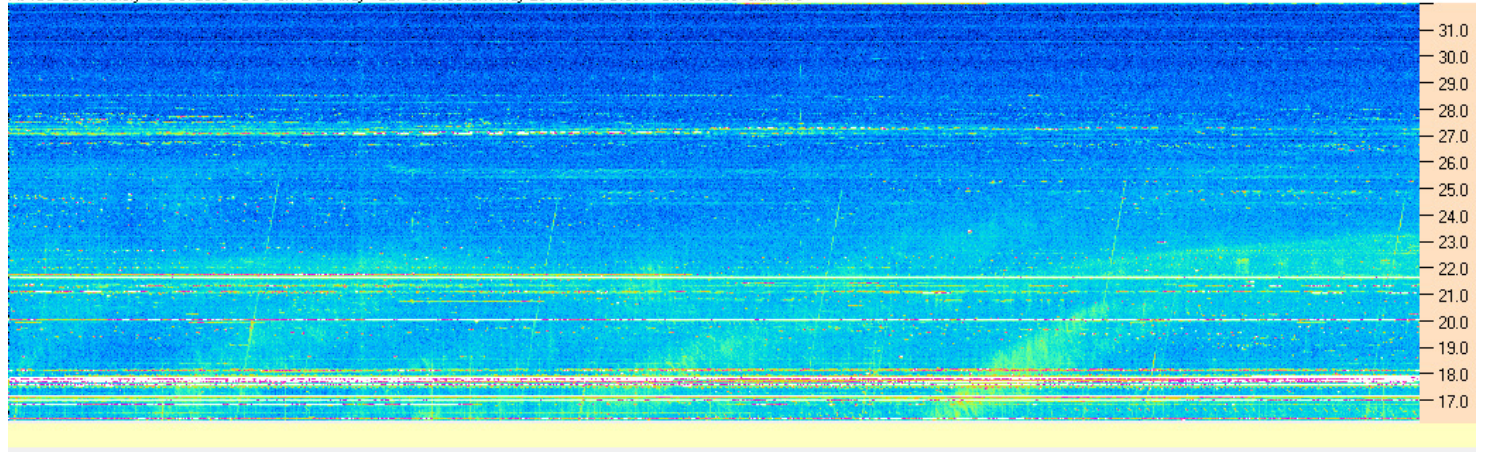
10/6/2016 AJ4CO Observatory



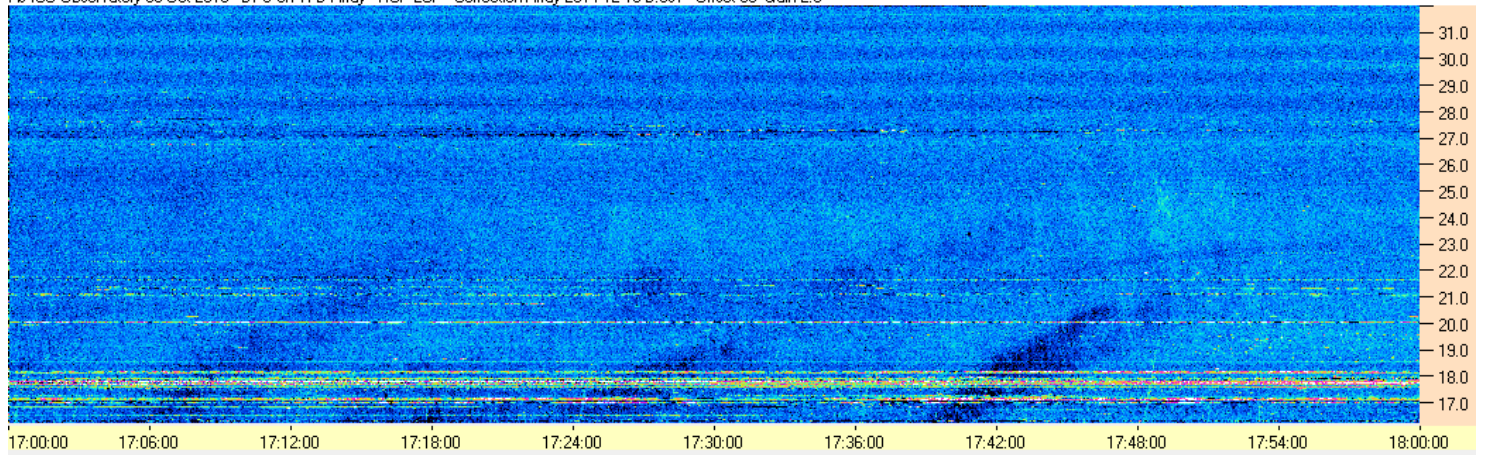
AJ4CO Observatory 06 Oct 2016 - DPS on TFD Array - RCP - Correction Array 2014 12 18 B.csv - Offset 2050 Gain 5.0



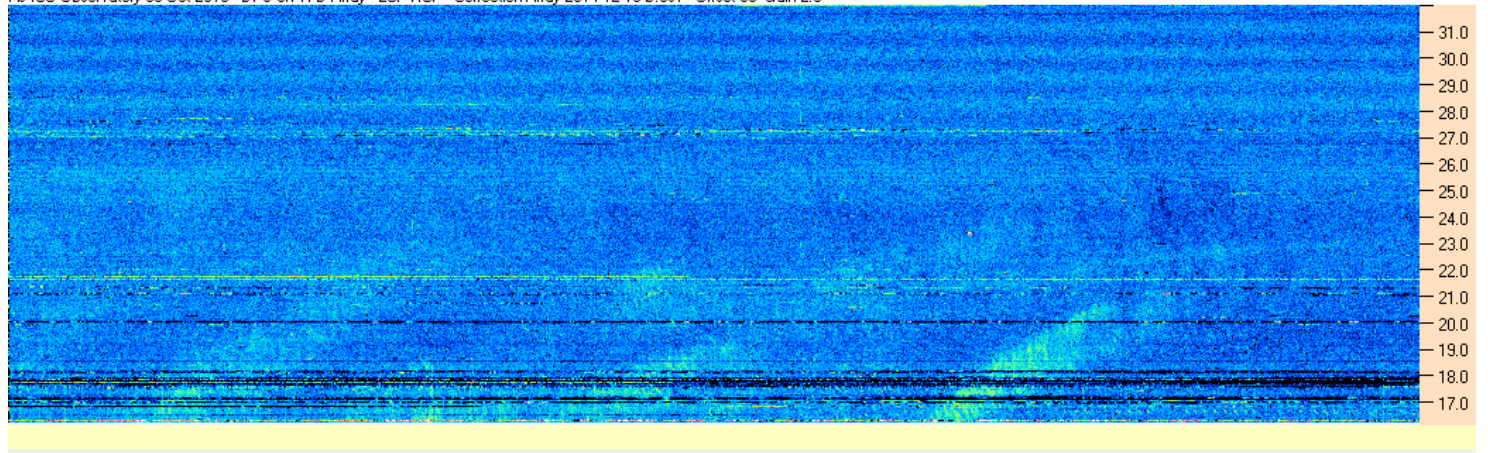
AJ4CO Observatory 06 Oct 2016 - DPS on TFD Array - LCP - Correction Array 2014 12 18 B.csv - Offset 2050 Gain 5.0



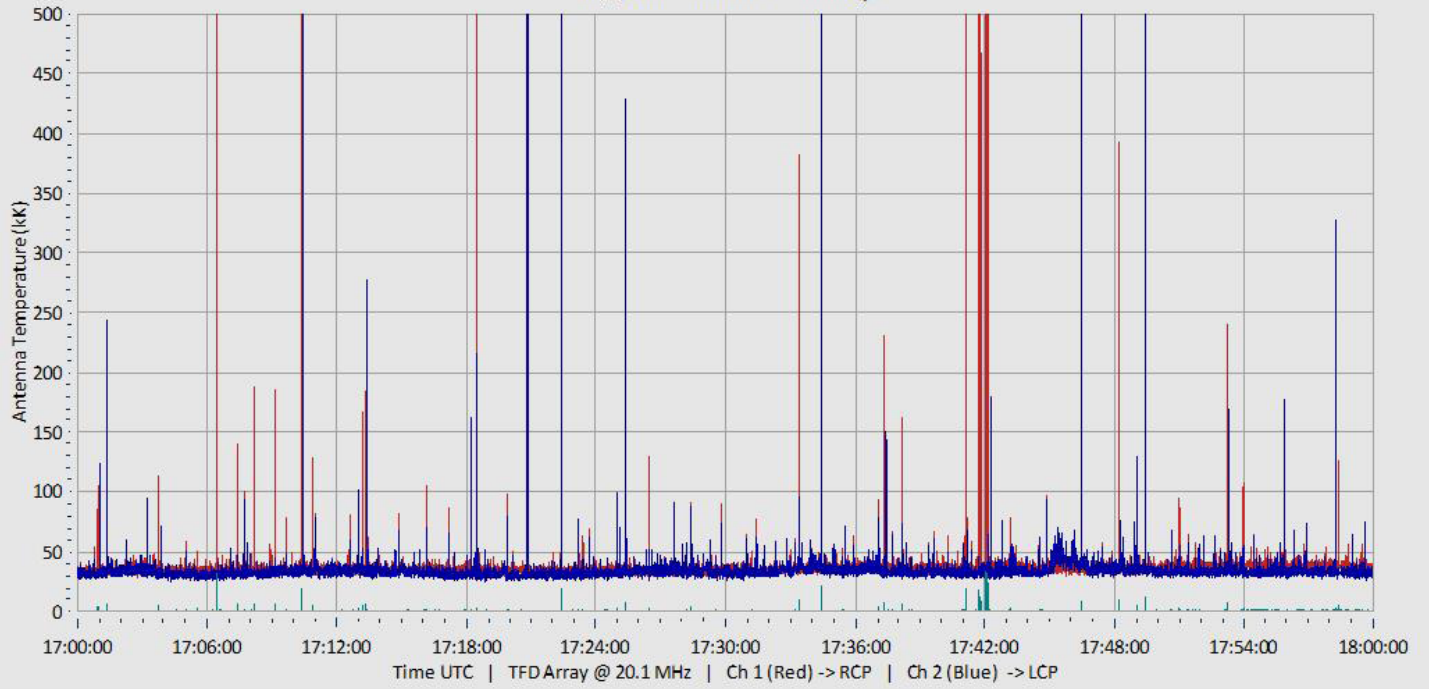
AJ4CO Observatory 06 Oct 2016 - DPS on TFD Array - RCP-LCP - Correction Array 2014 12 18 B.csv - Offset 50 Gain 2.0



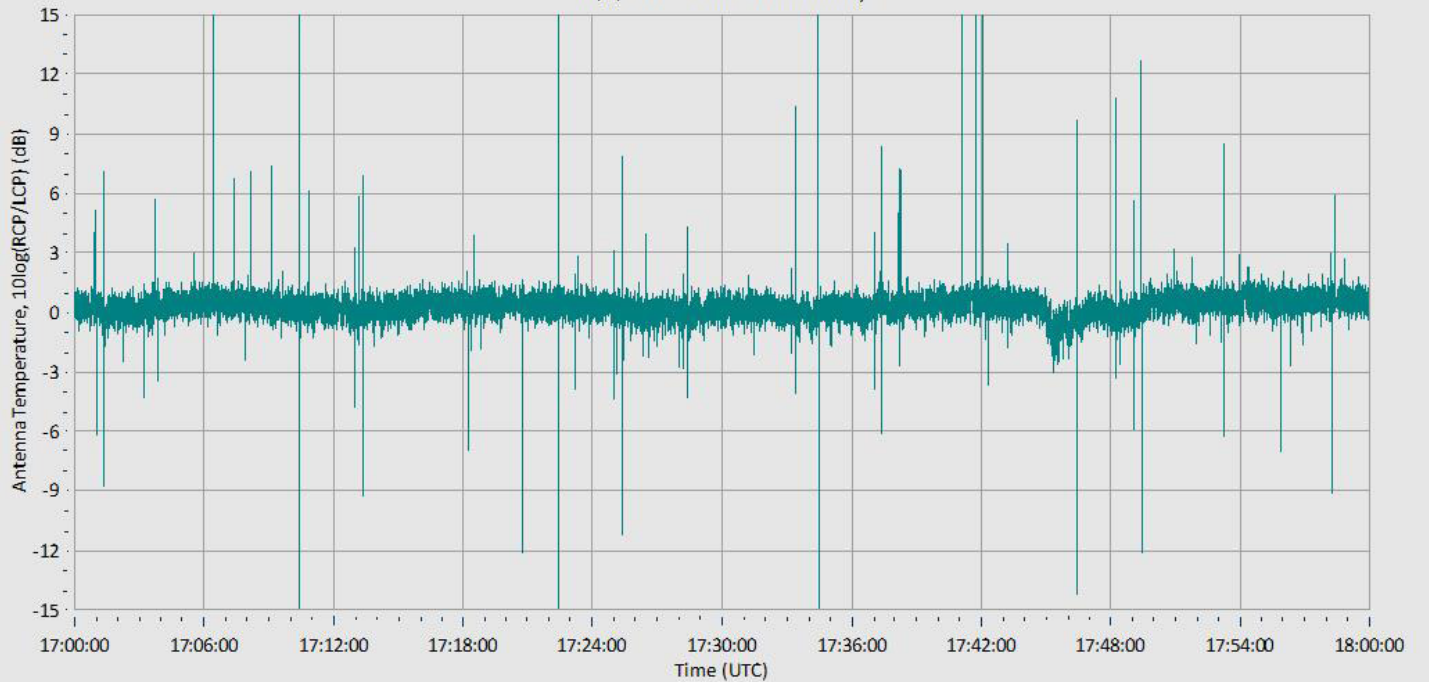
AJ4CO Observatory 06 Oct 2016 - DPS on TFD Array - LCP-RCP - Correction Array 2014 12 18 B.csv - Offset 50 Gain 2.0



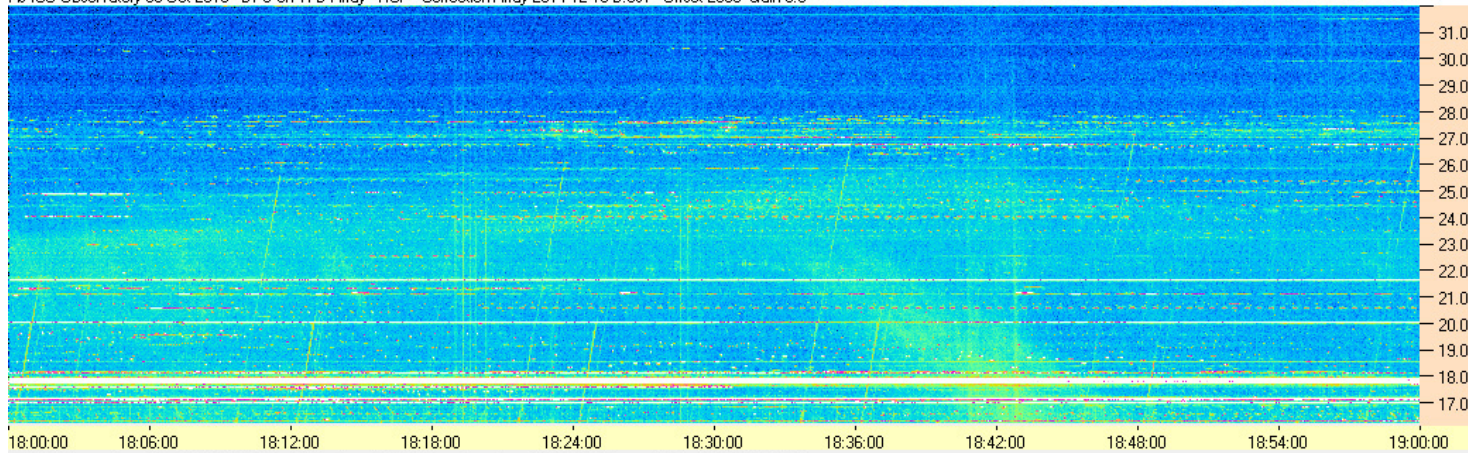
10/6/2016 AJ4CO Observatory



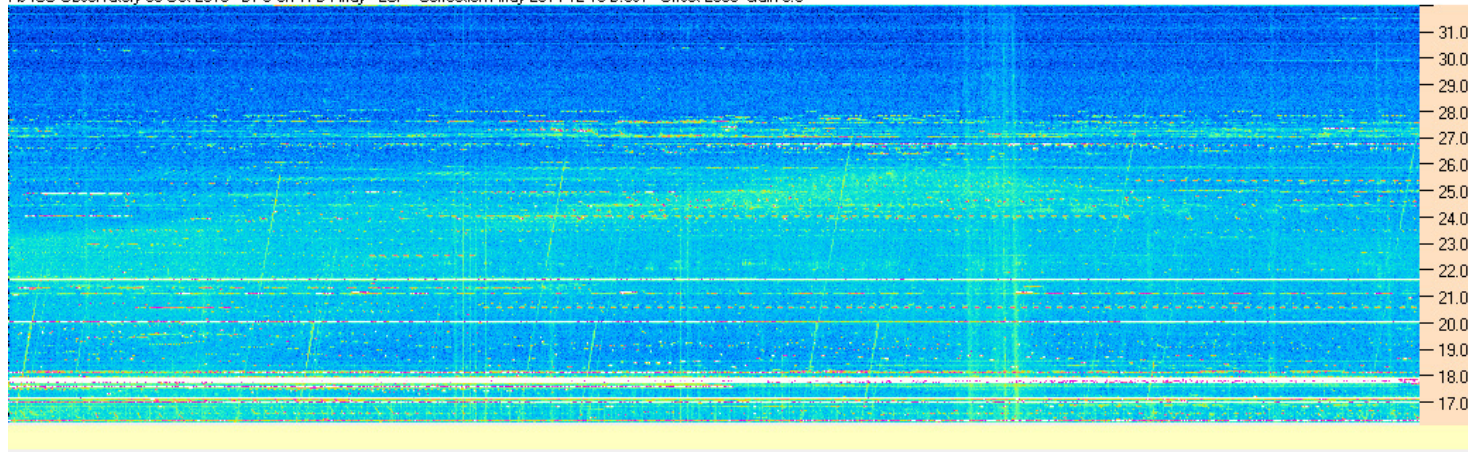
10/6/2016 AJ4CO Observatory



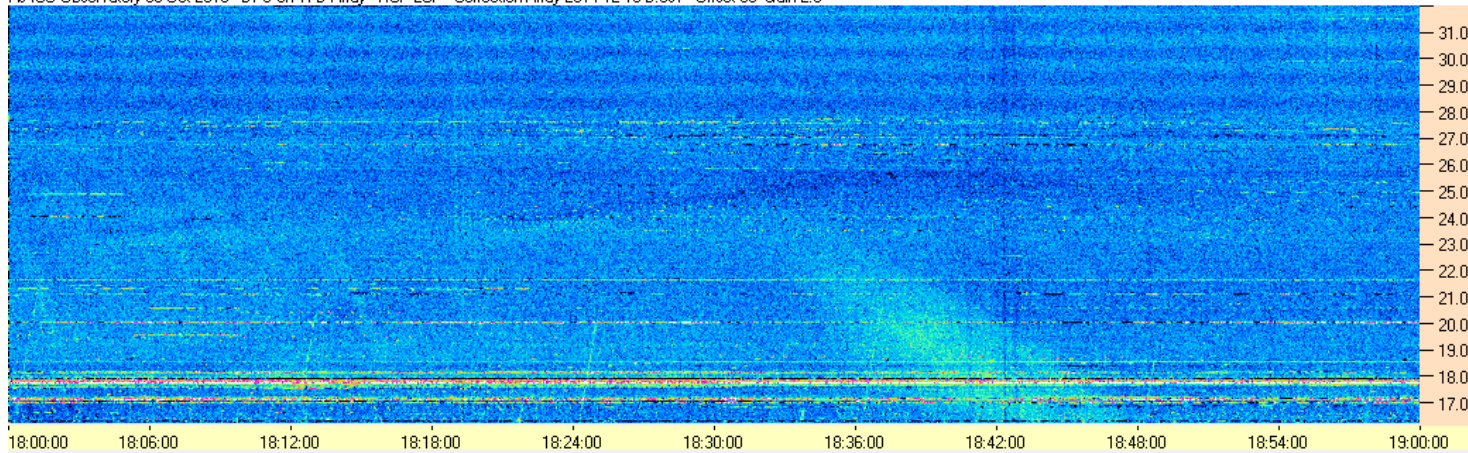
AJ4CO Observatory 06 Oct 2016 - DPS on TFD Array - RCP - Correction Array 2014 12 18 B.csv - Offset 2050 Gain 5.0



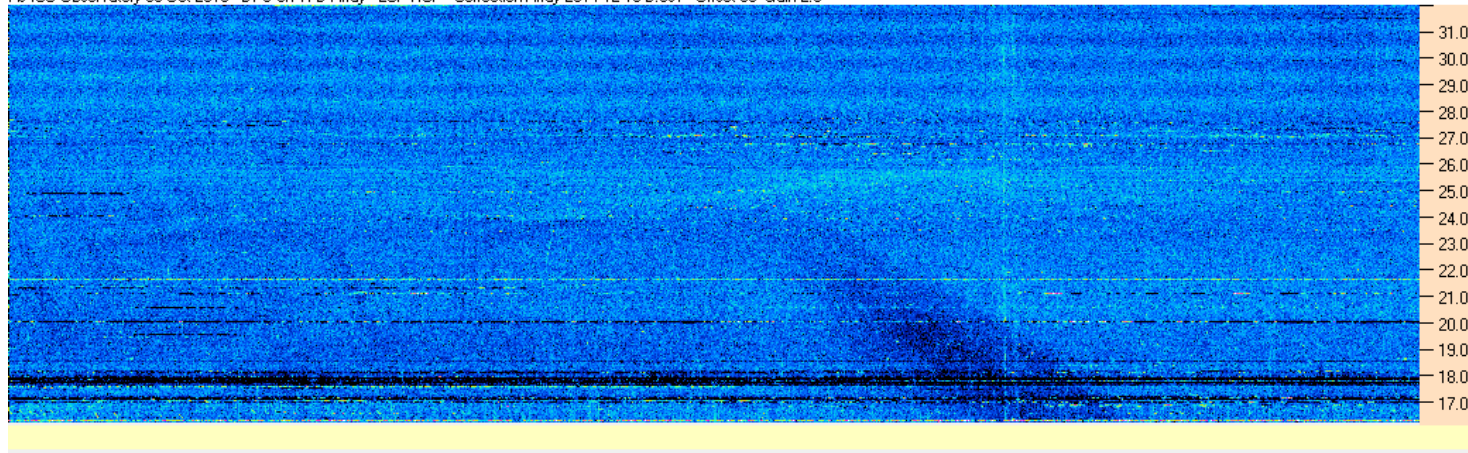
AJ4CO Observatory 06 Oct 2016 - DPS on TFD Array - LCP - Correction Array 2014 12 18 B.csv - Offset 2050 Gain 5.0



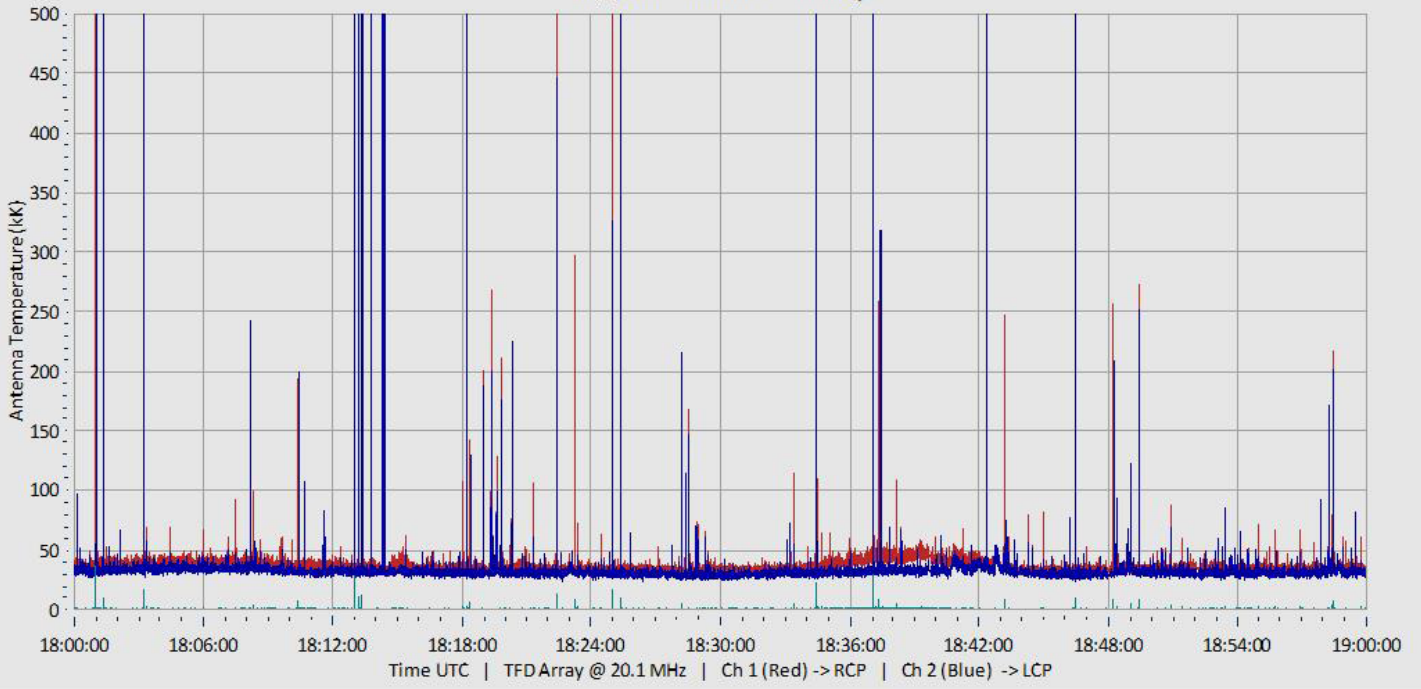
AJ4CO Observatory 06 Oct 2016 - DPS on TFD Array - RCP-LCP - Correction Array 2014 12 18 B.csv - Offset 50 Gain 2.0



AJ4CO Observatory 06 Oct 2016 - DPS on TFD Array - LCP-RCP - Correction Array 2014 12 18 B.csv - Offset 50 Gain 2.0



10/6/2016 AJ4CO Observatory



10/6/2016 AJ4CO Observatory

