

Some Io-D and Io-B from Wednesday.

First some line noise form 1630 to 1704 UTC.

Then some Io-D N events for a short time.

Then a bunch of Io-B S bursting. Rather strange that the emission envelopes are negative drift. They're usually positive drift (vertex early) for Io-B.

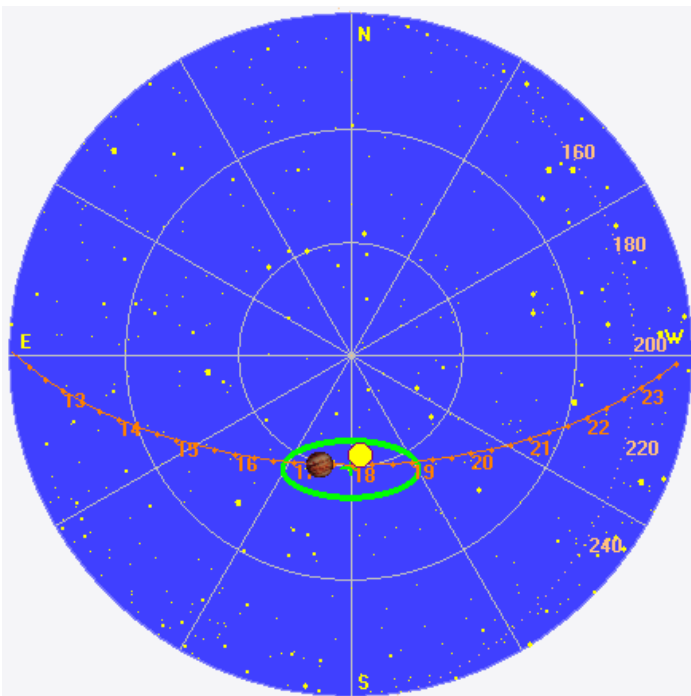
LCP dominant N events 1647–1726 UTC from 18 to 20 MHz, positive frequency drift emission envelopes. (Io-D)

RCP dominant S bursting 1650–1810 UTC from 16 to 25 MHz, negative frequency drift emission envelopes. (Io-B)

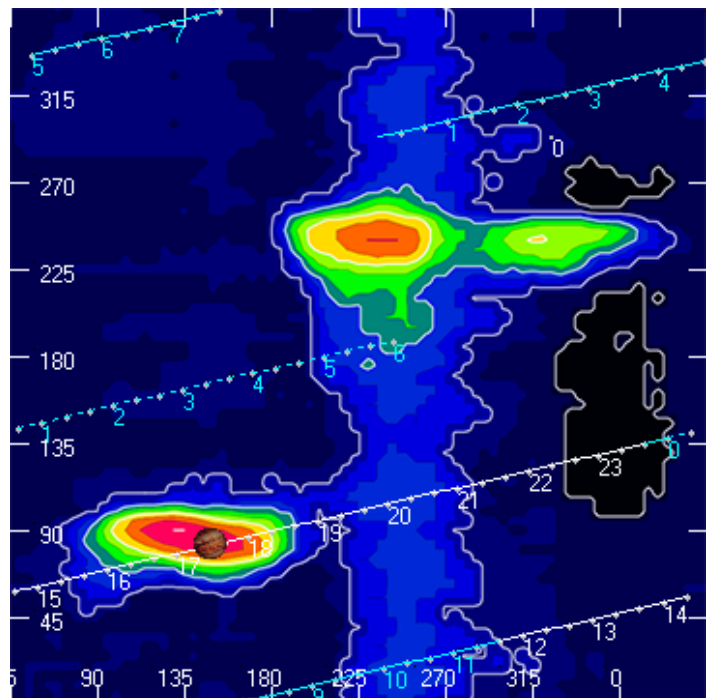
Jupiter was -18° to $+3^\circ$ off axis.

Jupiter was trailing the Sun by 9° .

Jupiter's location at midpoint of observed emission (1728 UTC)

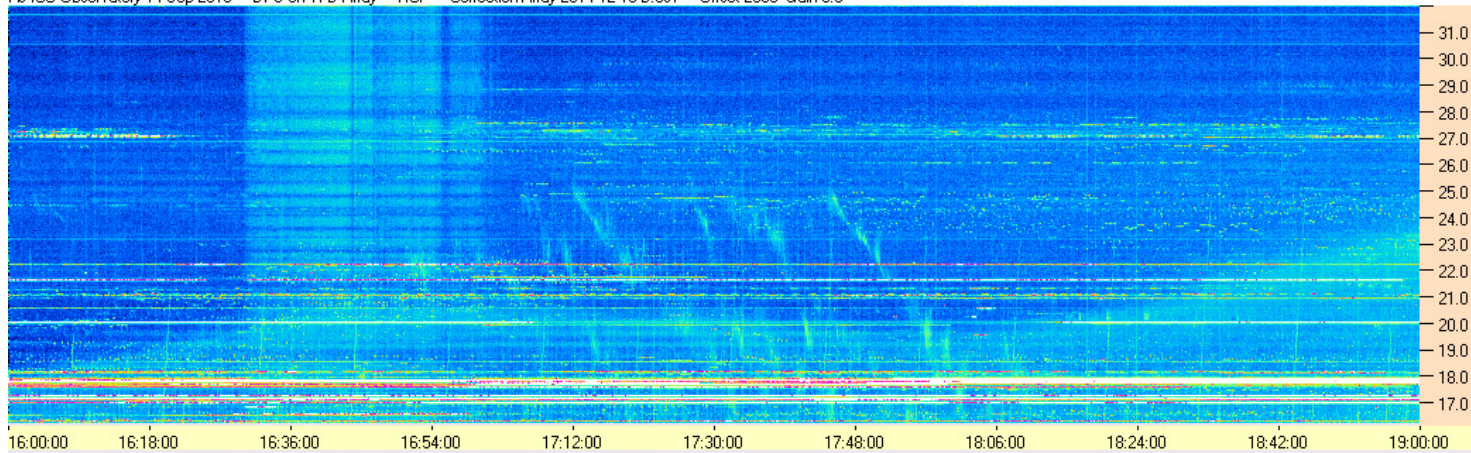


Sky map with array HPBW in green.

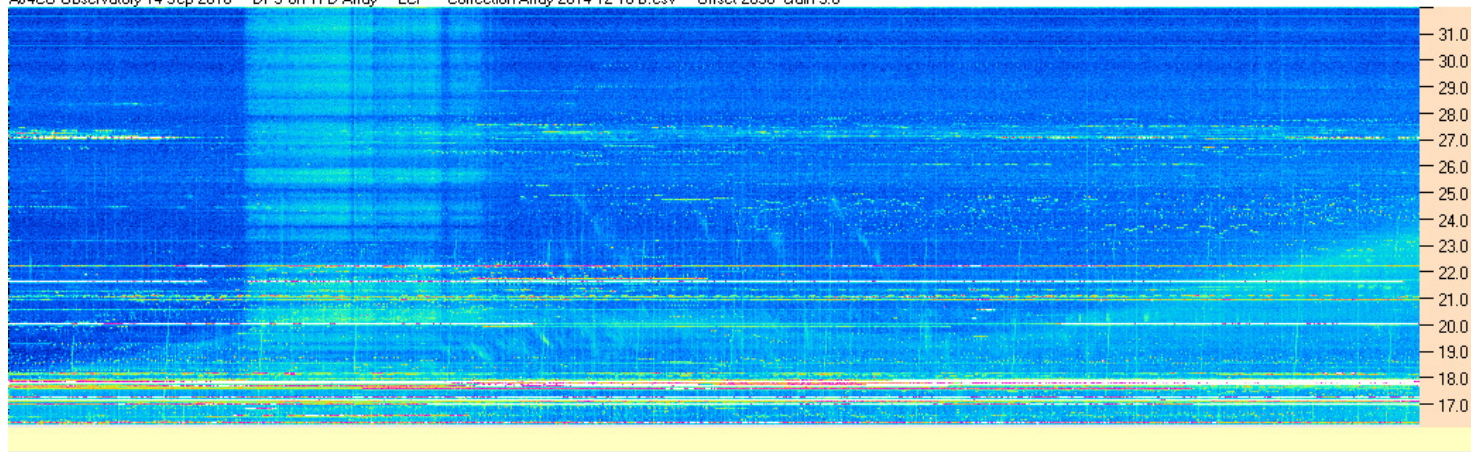


CML-Io phase plane.

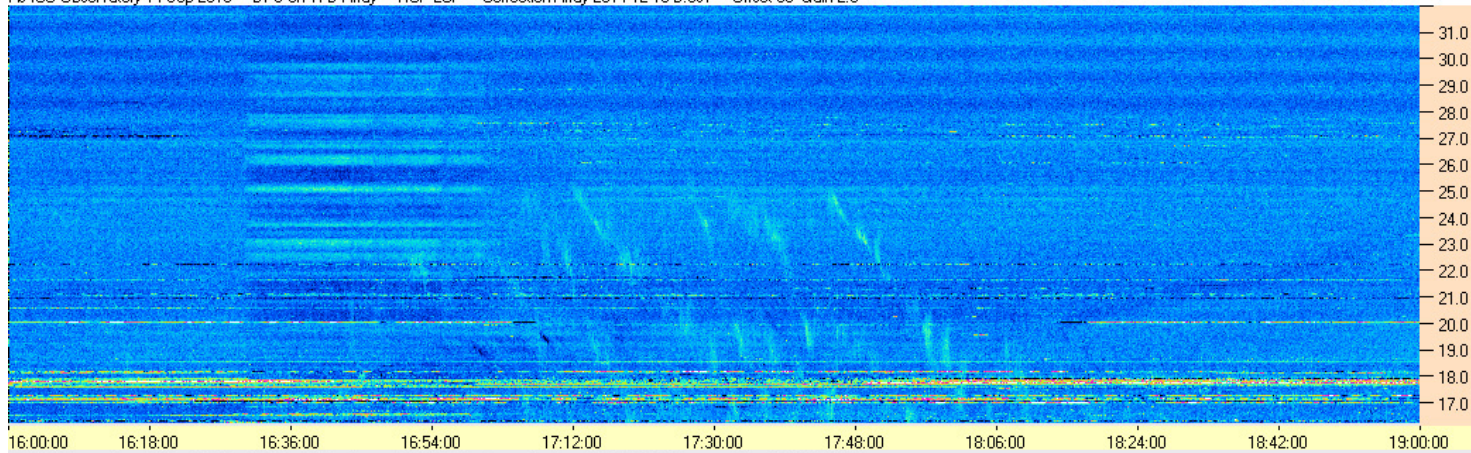
AJ4CO Observatory 14 Sep 2016 - DPS on TFD Array - RCP - Correction Array 2014 12 18 B.csv - Offset 2050 Gain 5.0



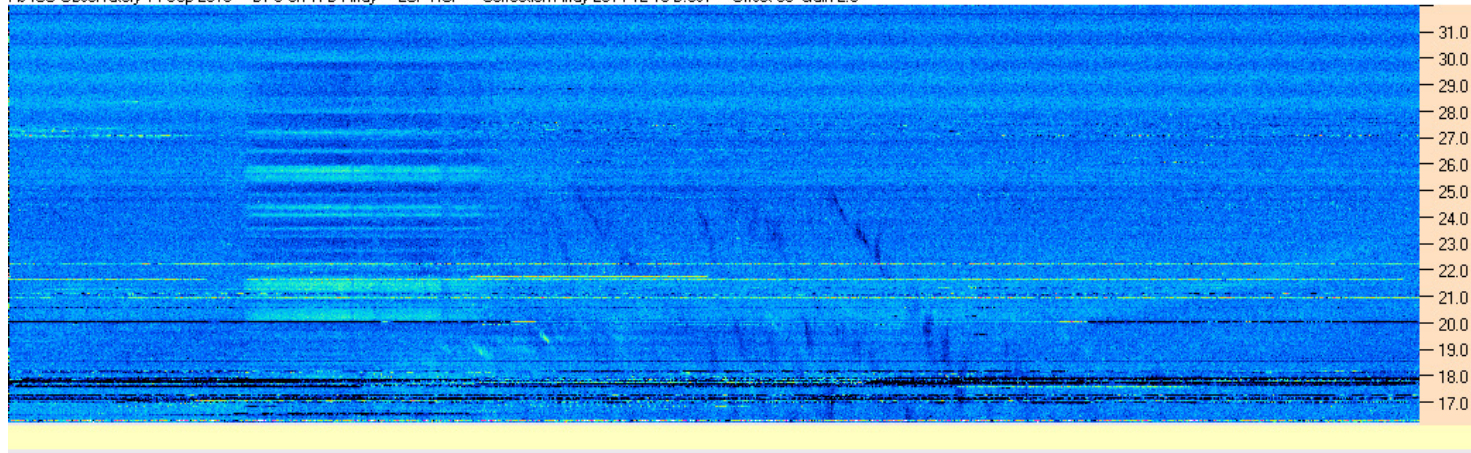
AJ4CO Observatory 14 Sep 2016 - DPS on TFD Array - LCP - Correction Array 2014 12 18 B.csv - Offset 2050 Gain 5.0

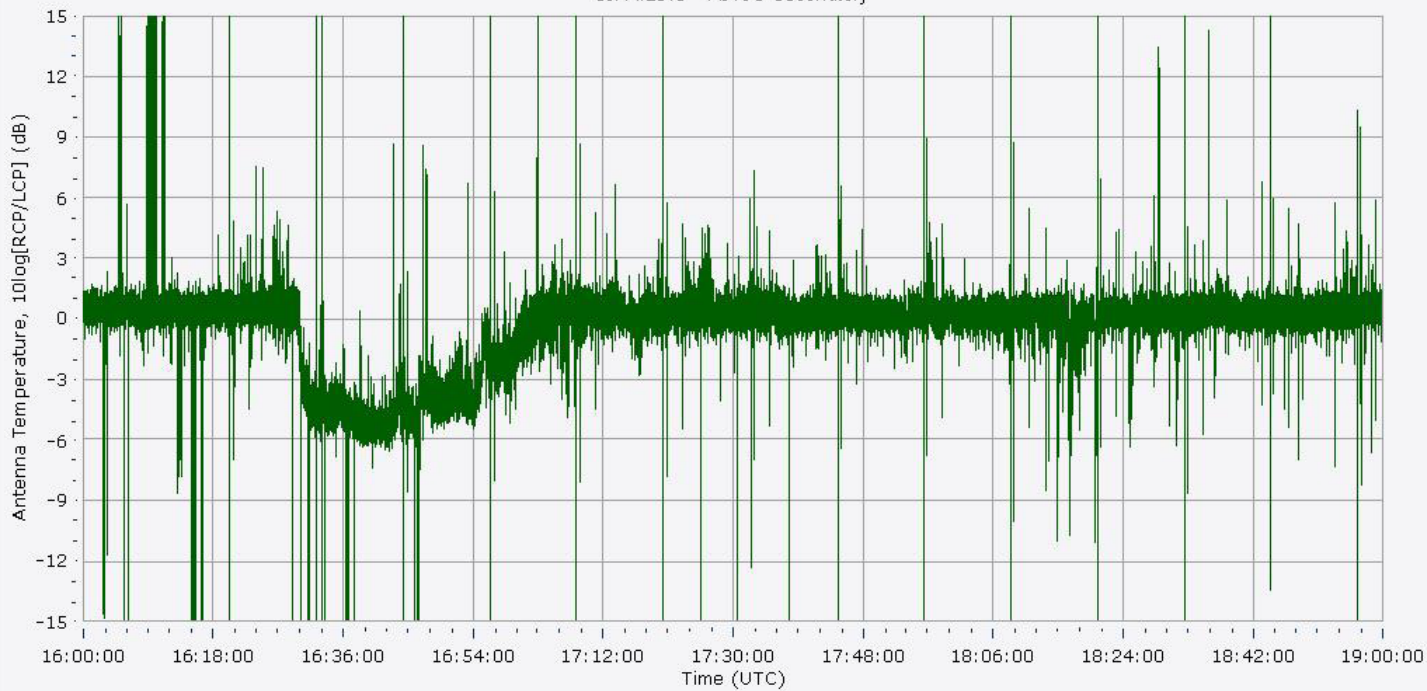
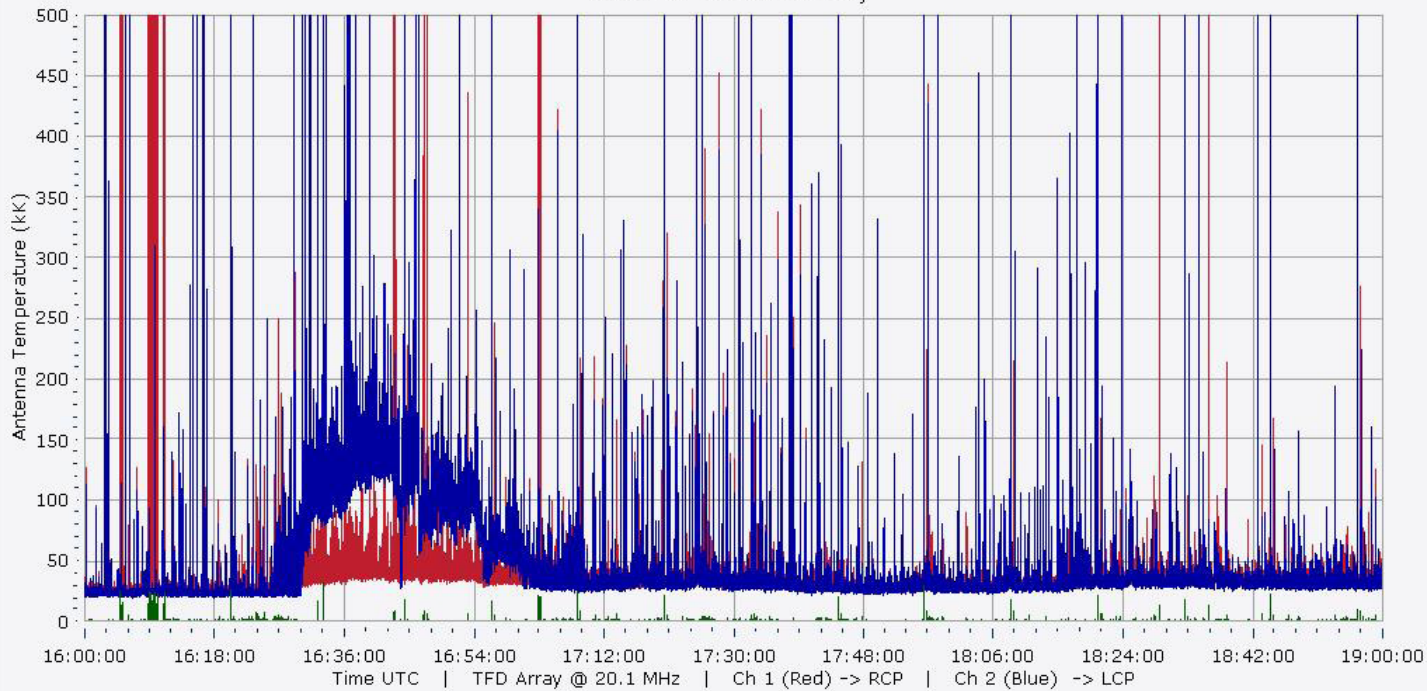


AJ4CO Observatory 14 Sep 2016 - DPS on TFD Array - RCP-LCP - Correction Array 2014 12 18 B.csv - Offset 50 Gain 2.0

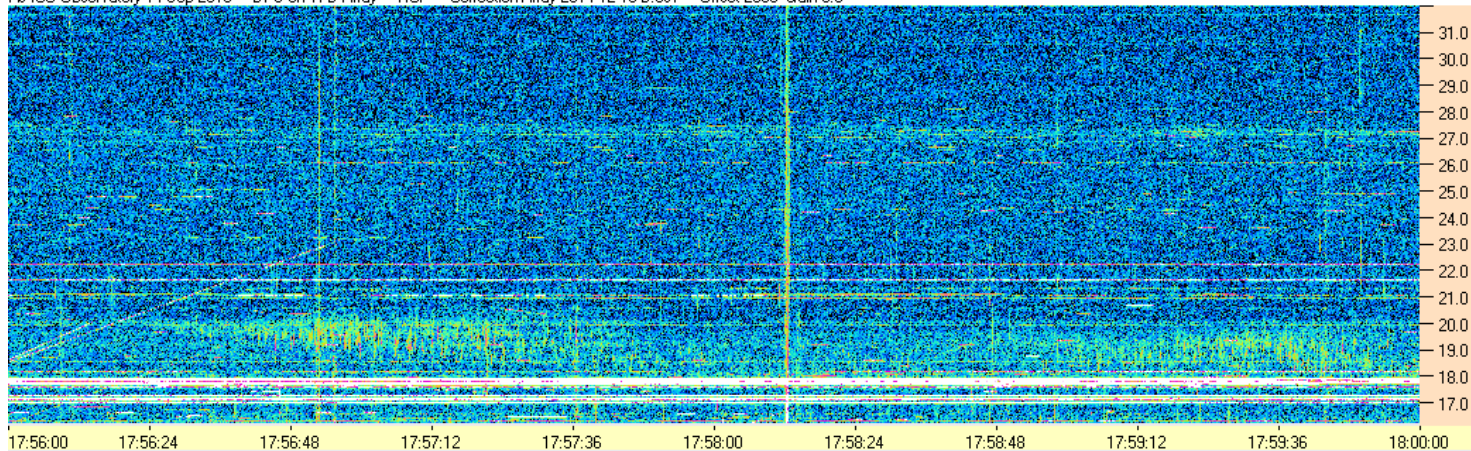


AJ4CO Observatory 14 Sep 2016 - DPS on TFD Array - LCP-RCP - Correction Array 2014 12 18 B.csv - Offset 50 Gain 2.0

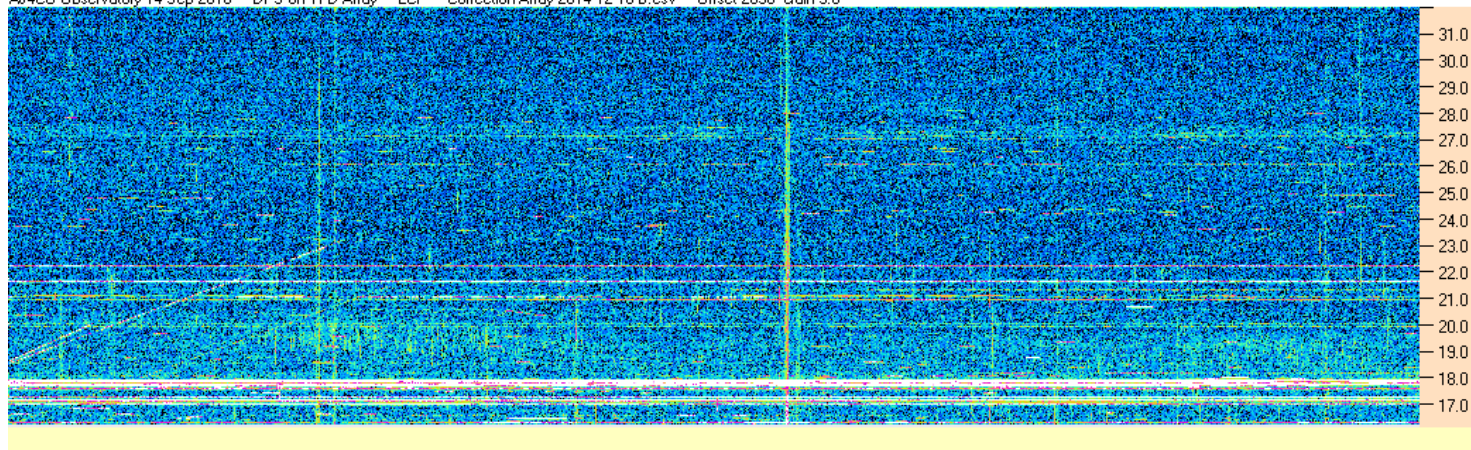




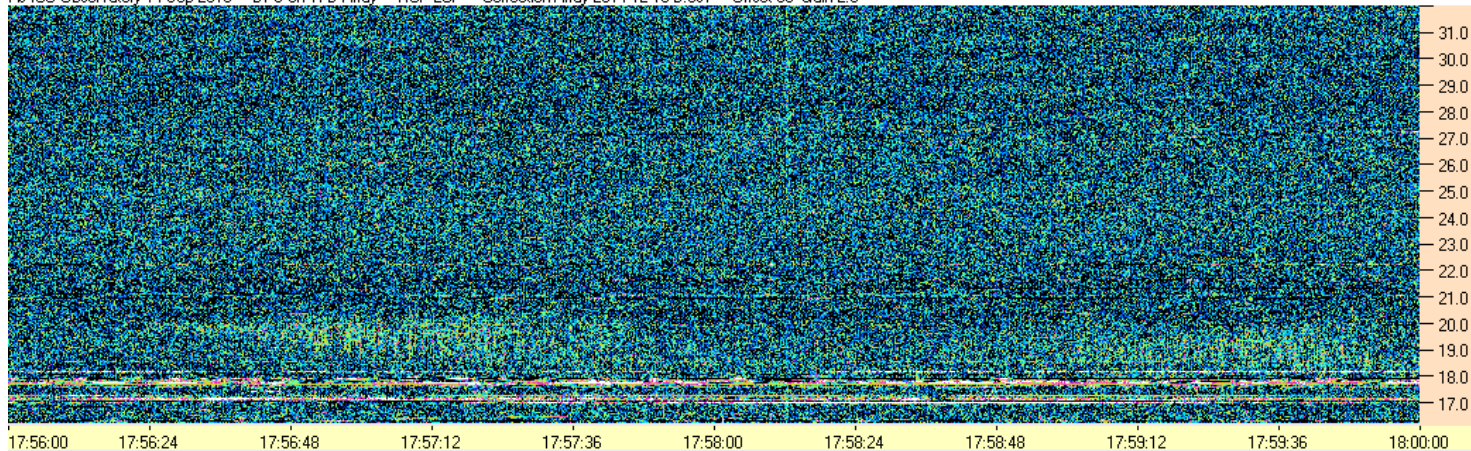
AJ4CO Observatory 14 Sep 2016 - DPS on TFD Array - RCP - Correction Array 2014 12 18 B.csv - Offset 2050 Gain 5.0



AJ4CO Observatory 14 Sep 2016 - DPS on TFD Array - LCP - Correction Array 2014 12 18 B.csv - Offset 2050 Gain 5.0



AJ4CO Observatory 14 Sep 2016 - DPS on TFD Array - RCP-LCP - Correction Array 2014 12 18 B.csv - Offset 50 Gain 2.0



AJ4CO Observatory 14 Sep 2016 - DPS on TFD Array - LCP-RCP - Correction Array 2014 12 18 B.csv - Offset 50 Gain 2.0

