

Similar to last week's Io-B pass, here's a similar 4½-hour run with Io-B, Io-D, non-Io-A, and non-Io-C. This time Io-B was strong while Io-D and the non-Io emission was weak (just the opposite of last week).

RCP dominant L bursting 1604–1802 UTC from 16 to 32 MHz, vertex early arcs. (Io-B)

RCP dominant L bursting 1836–1901 UTC from 16 to 26 MHz, negative frequency drift emission envelopes. (non-Io-A)

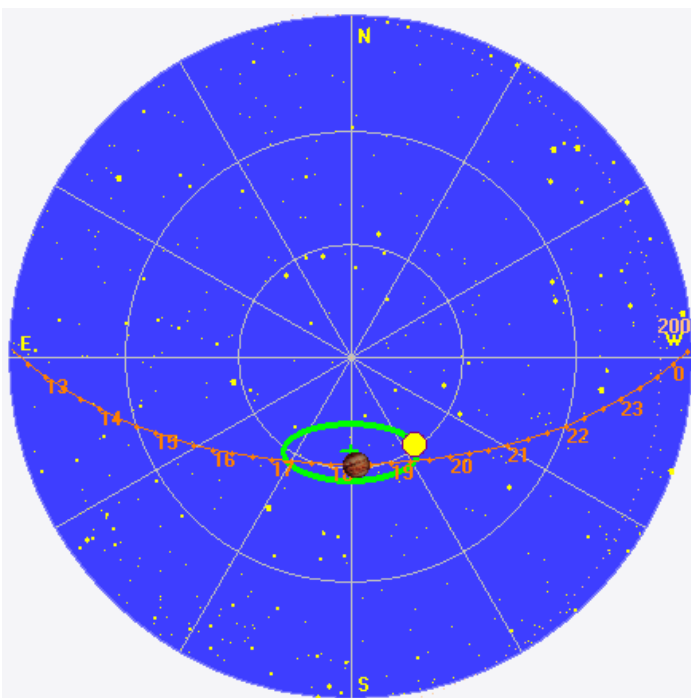
LCP dominant L bursting 1848–1941 UTC from 16 to 23 MHz, positive frequency drift emission envelopes. (Io-D)

LCP dominant L bursting 2028–2049 UTC from 16 to 21 MHz, negative frequency drift emission envelopes. (non-Io-C)

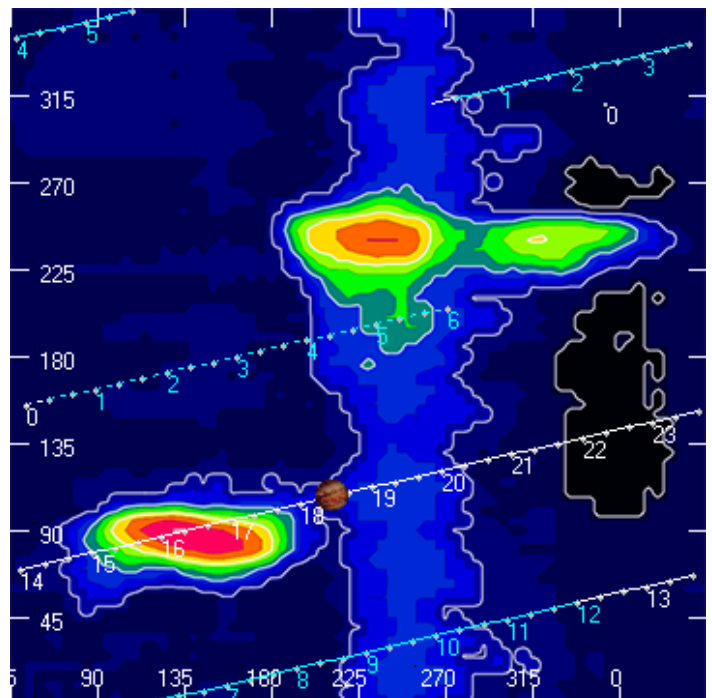
Jupiter was -35° to $+37^\circ$ off axis.

Jupiter was trailing the Sun by 14° .

Jupiter's location at midpoint of observed emission (1826 UTC)

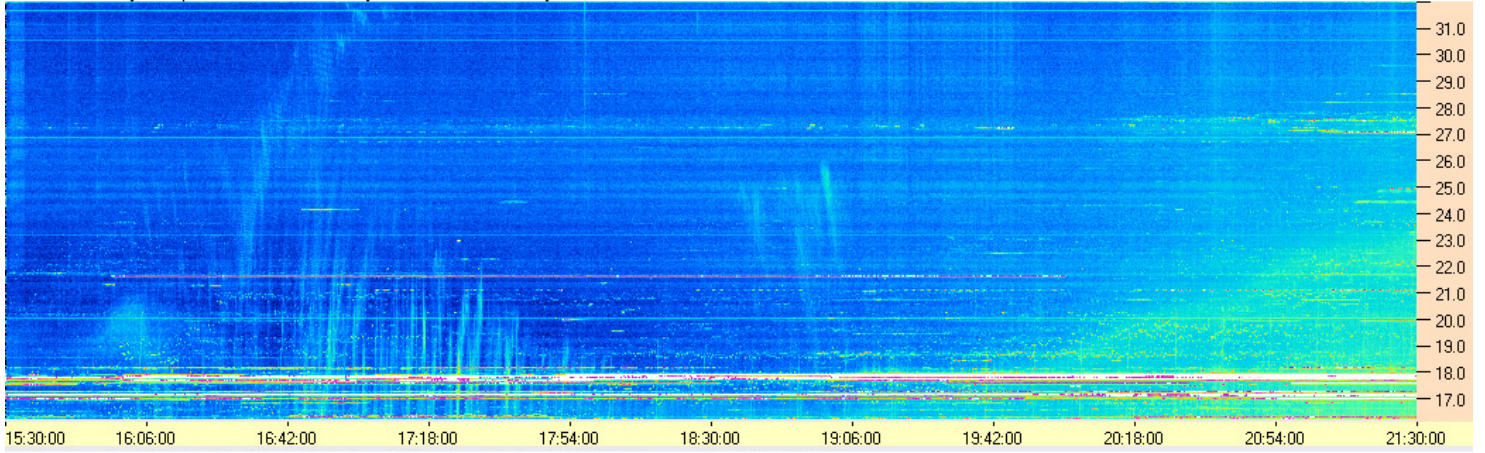


Sky map with array HPBW in green.

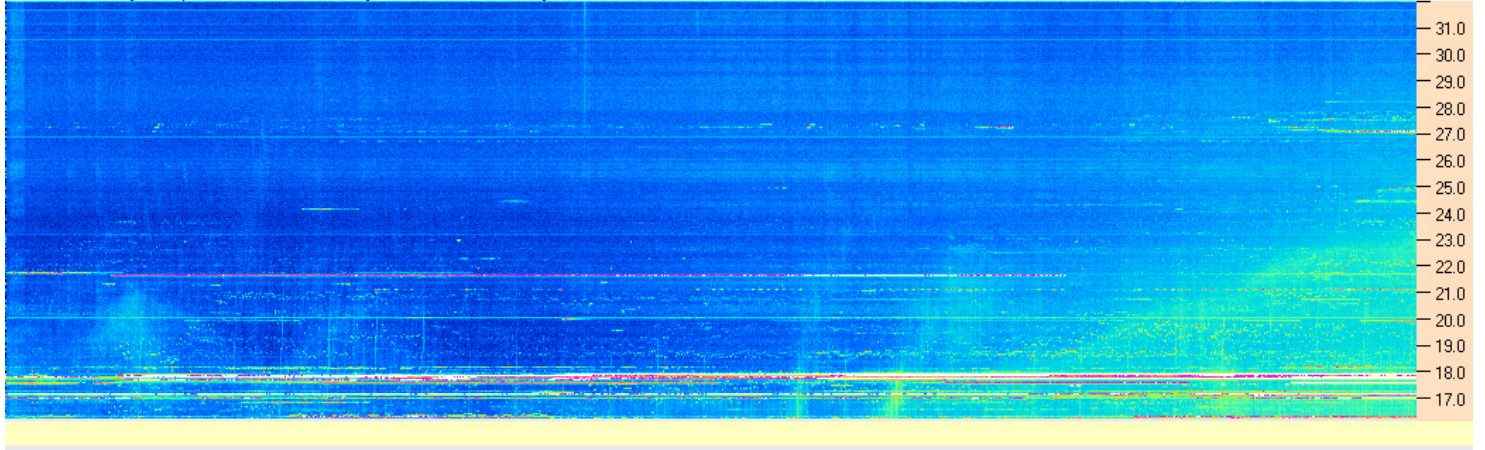


CML-Io phase plane.

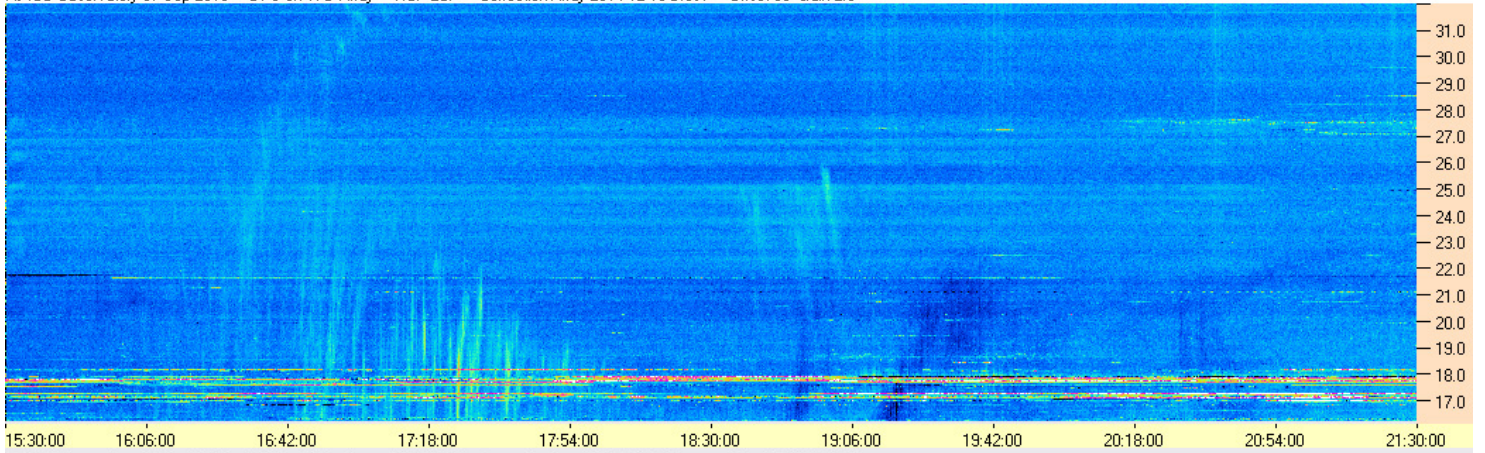
AJ4CO Observatory 07 Sep 2016 - DPS on TFD Array - RCP - Correction Array 2014 12 18 B.csv - Offset 2050 Gain 5.0



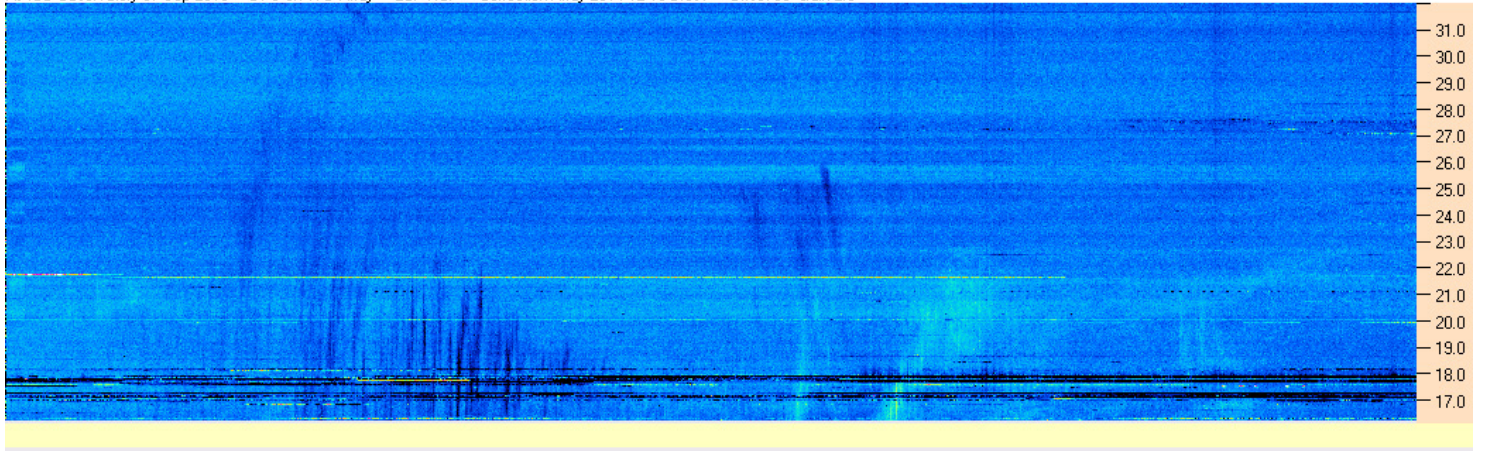
AJ4CO Observatory 07 Sep 2016 - DPS on TFD Array - LCP - Correction Array 2014 12 18 B.csv - Offset 2050 Gain 5.0



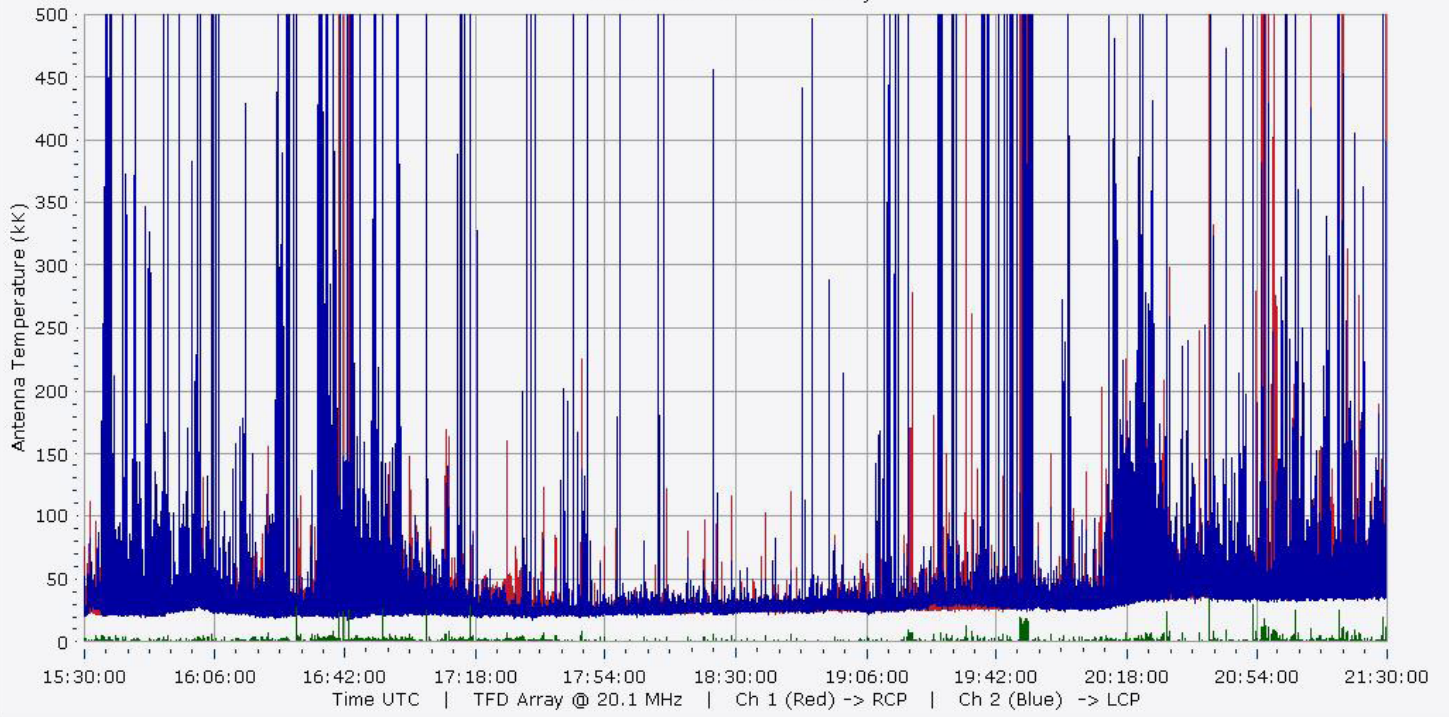
AJ4CO Observatory 07 Sep 2016 - DPS on TFD Array - RCP-LCP - Correction Array 2014 12 18 B.csv - Offset 50 Gain 2.0



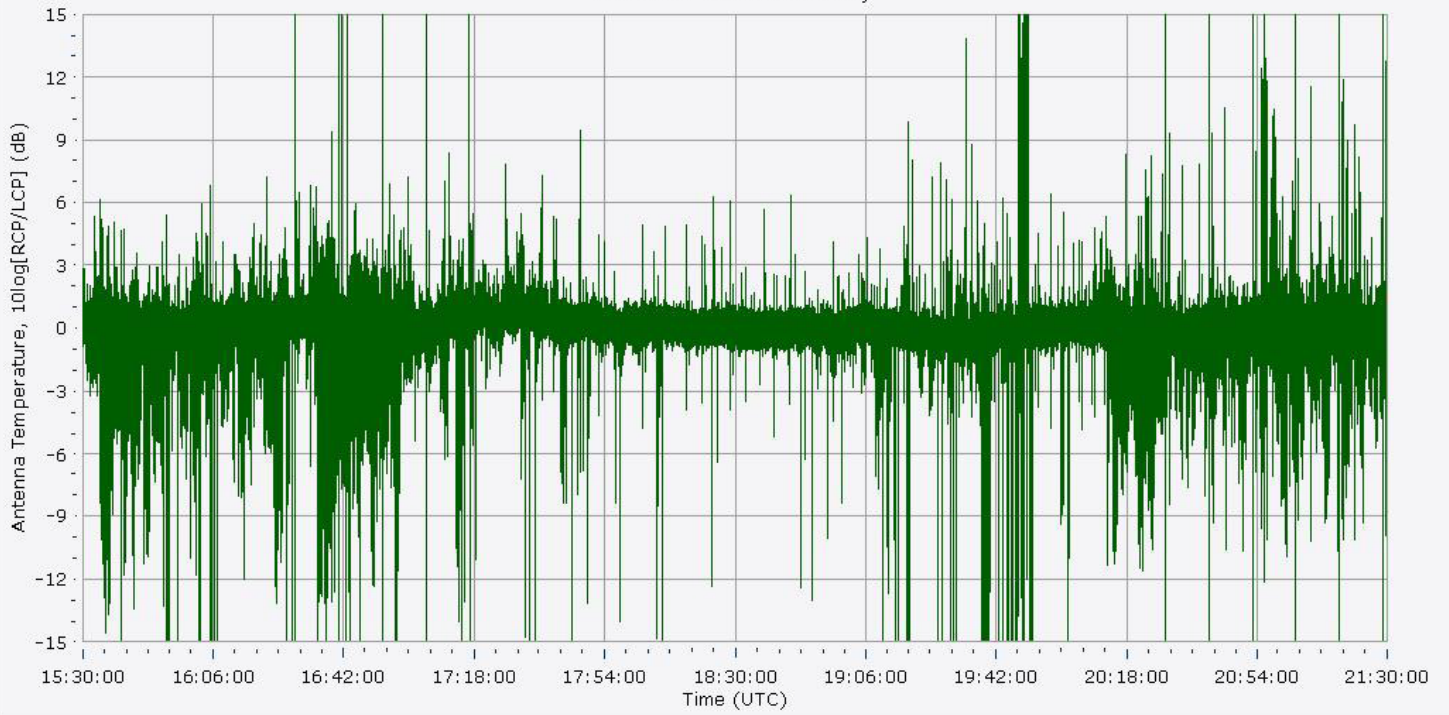
AJ4CO Observatory 07 Sep 2016 - DPS on TFD Array - LCP-RCP - Correction Array 2014 12 18 B.csv - Offset 50 Gain 2.0

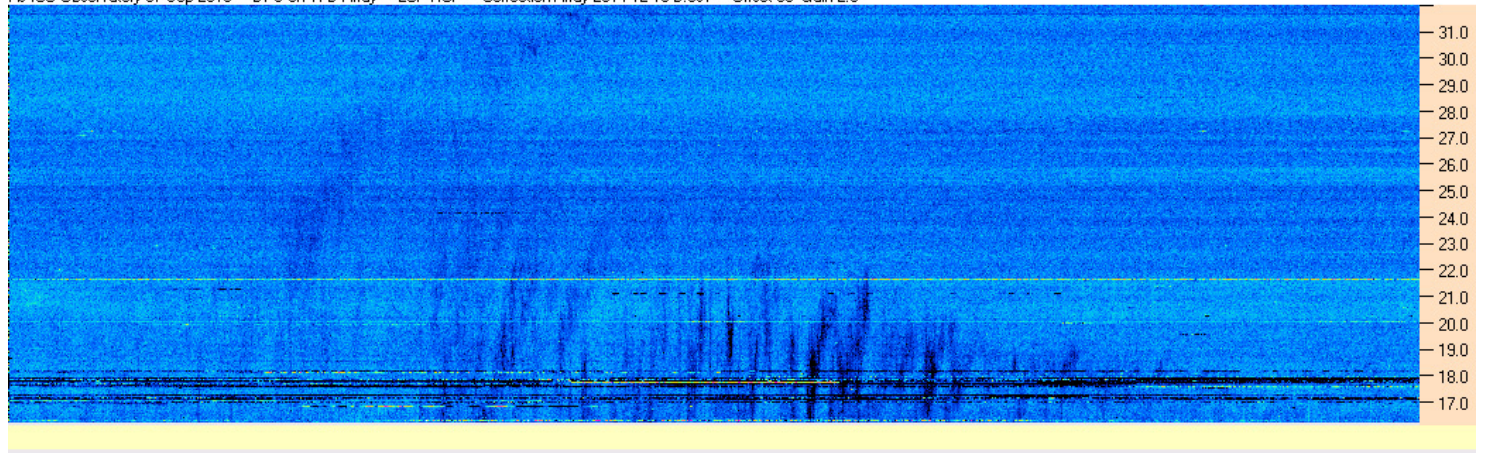
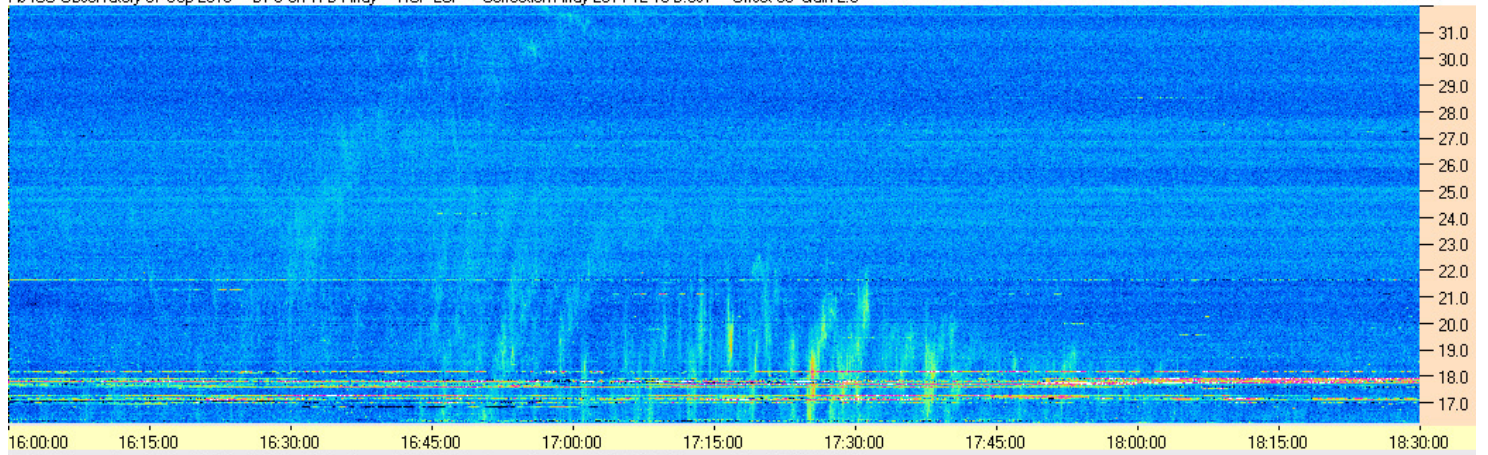
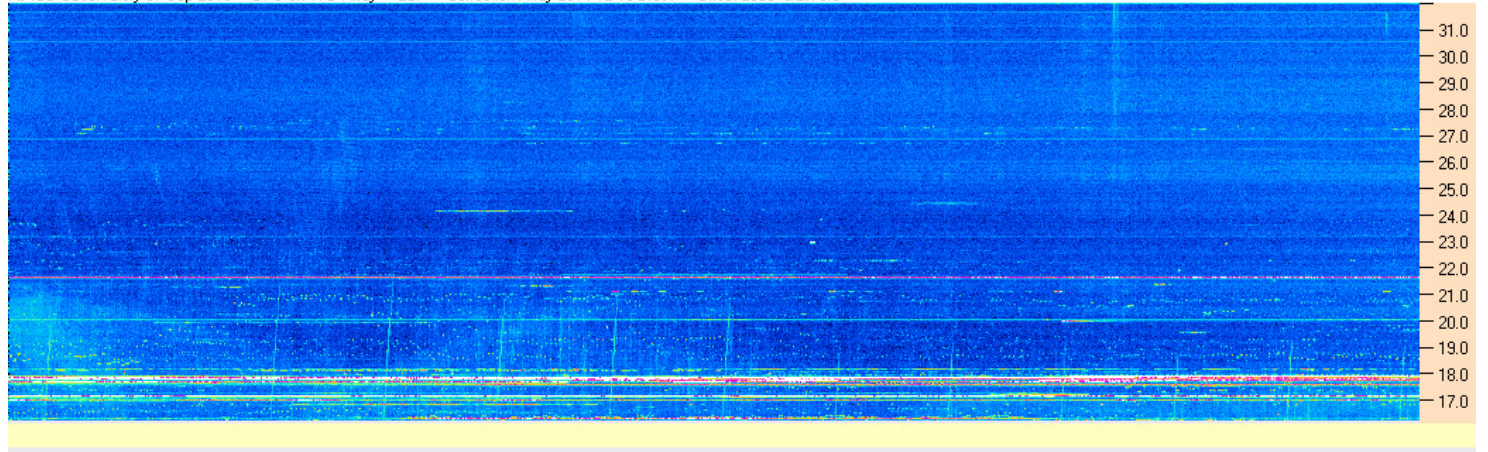
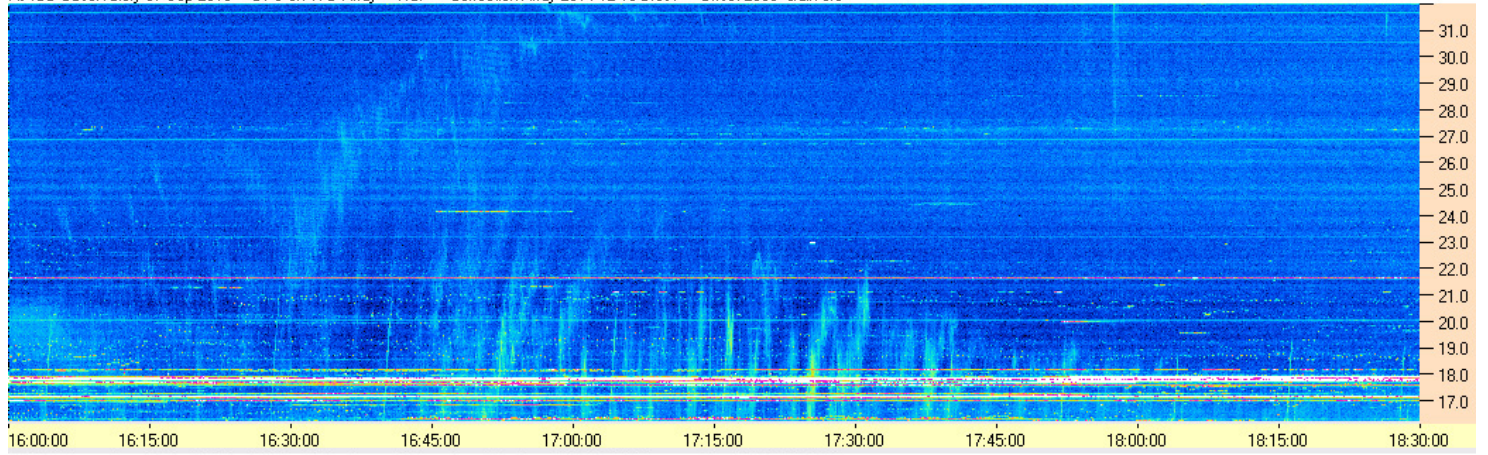


09/07/2016 AJ4CO Observatory

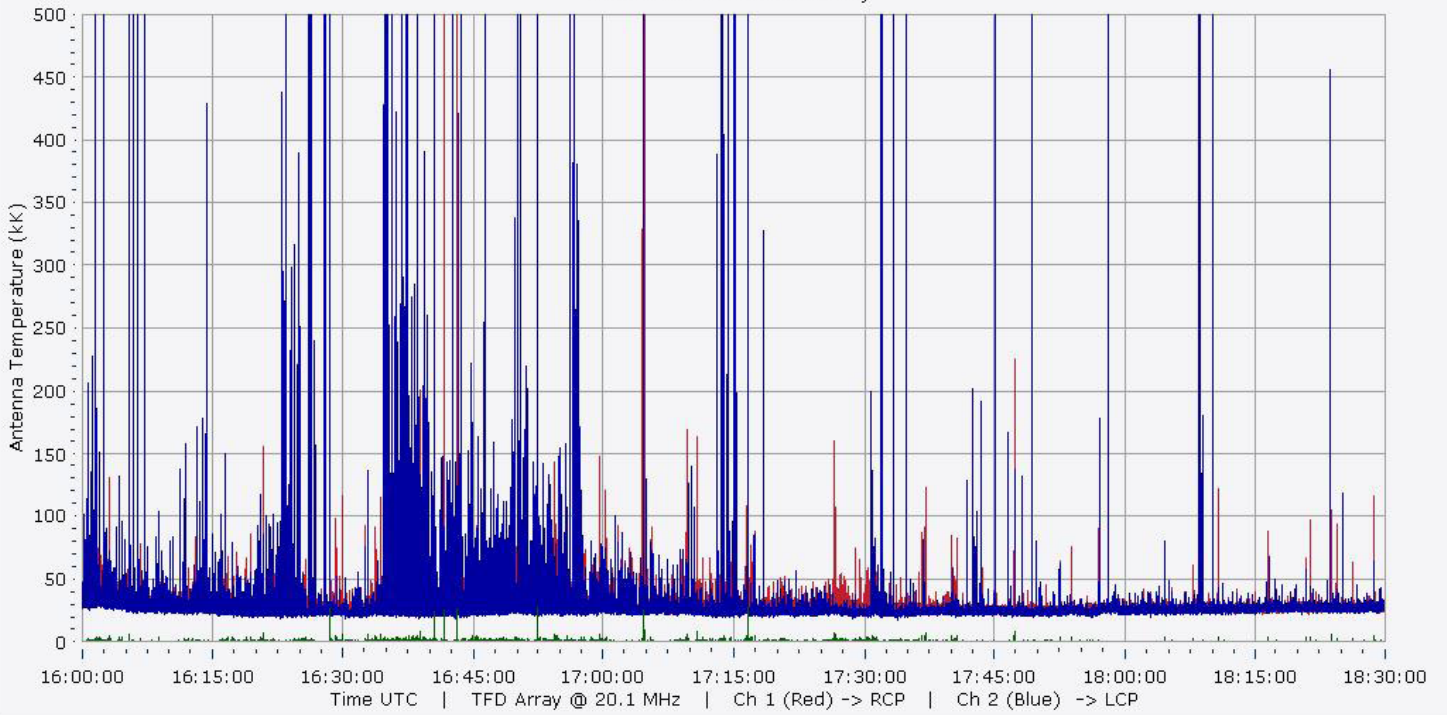


09/07/2016 AJ4CO Observatory





09/07/2016 AJ4CO Observatory



09/07/2016 AJ4CO Observatory

