

A few nice solar bursts today.

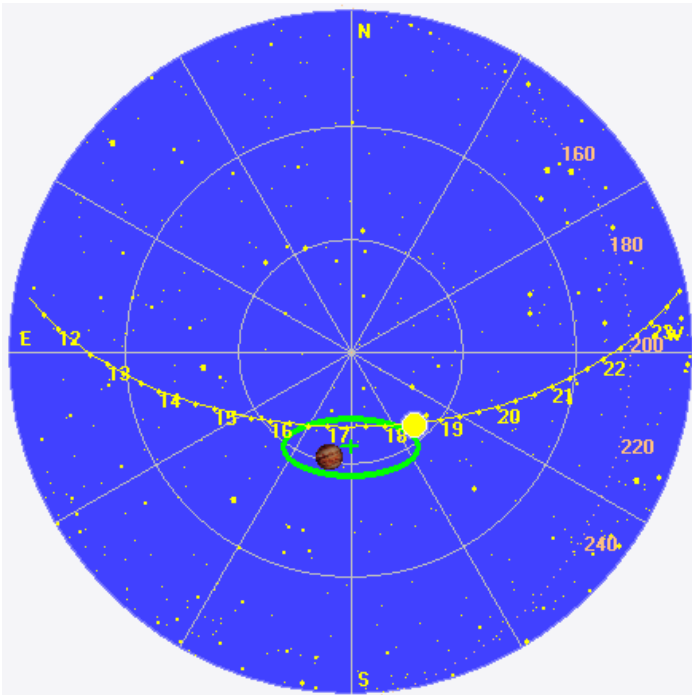
Two of the four bursts were missed by the SWPC.

The Sun was -6° to $+33^\circ$ off axis.

#Event	Begin	Max	End	Obs	Q	Type	Loc/Frq	Particulars	Reg#
7910 +	1756	////	1756	PAL	C	RSP	025-068	III/2	
7920	1942	////	1943	PAL	C	RSP	025-075	III/1	

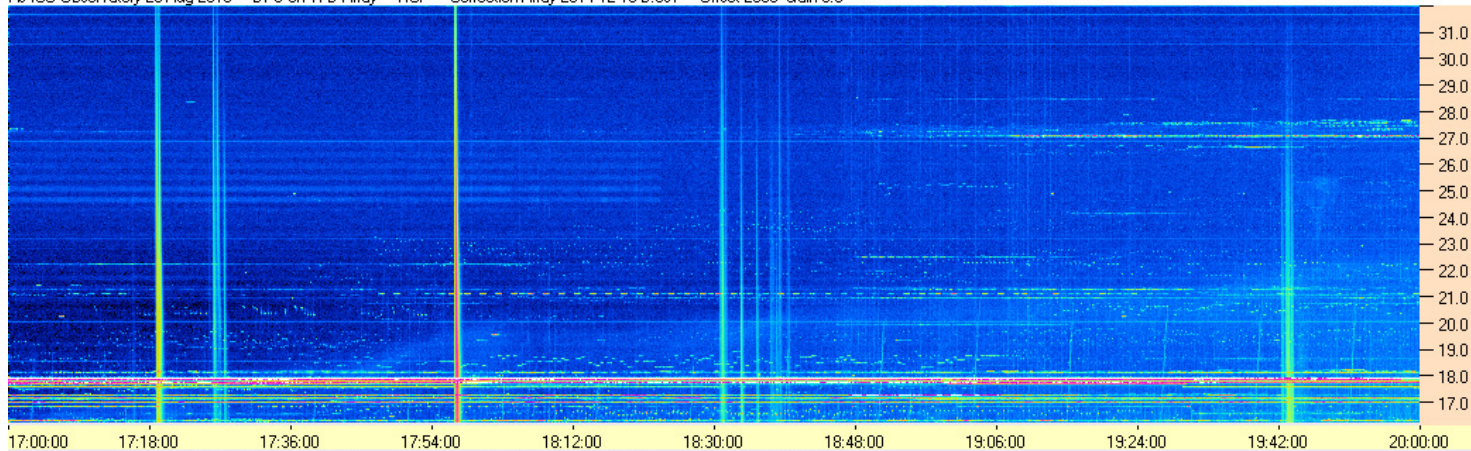
<ftp://ftp.swpc.noaa.gov/pub/indices/events/>

The Sun's location at midpoint of observed emission (1830 UTC)

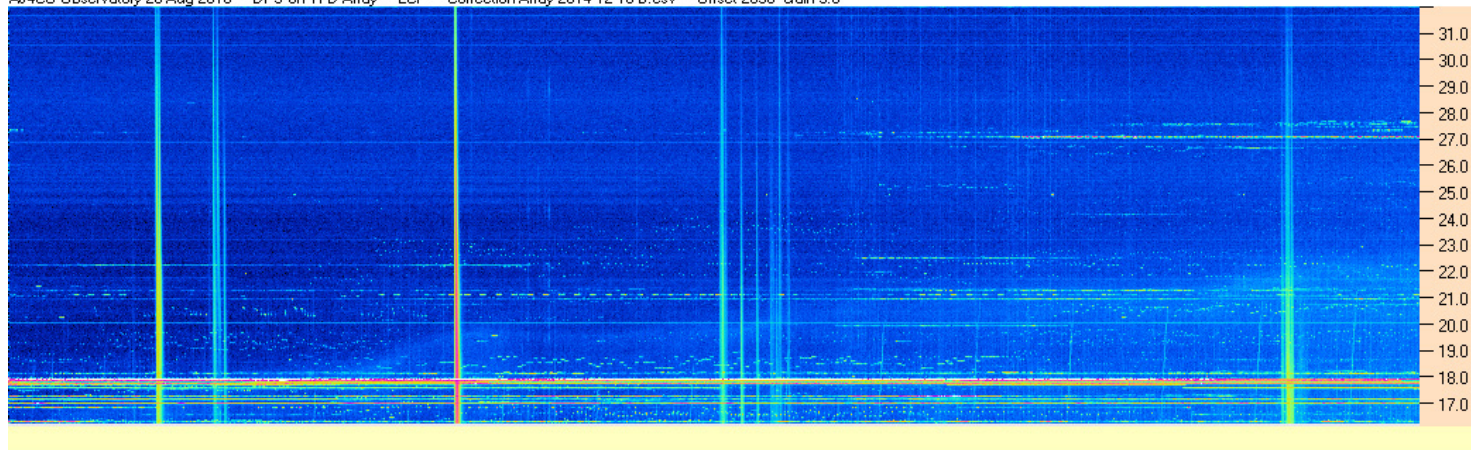


Sky map with array HPBW in green.

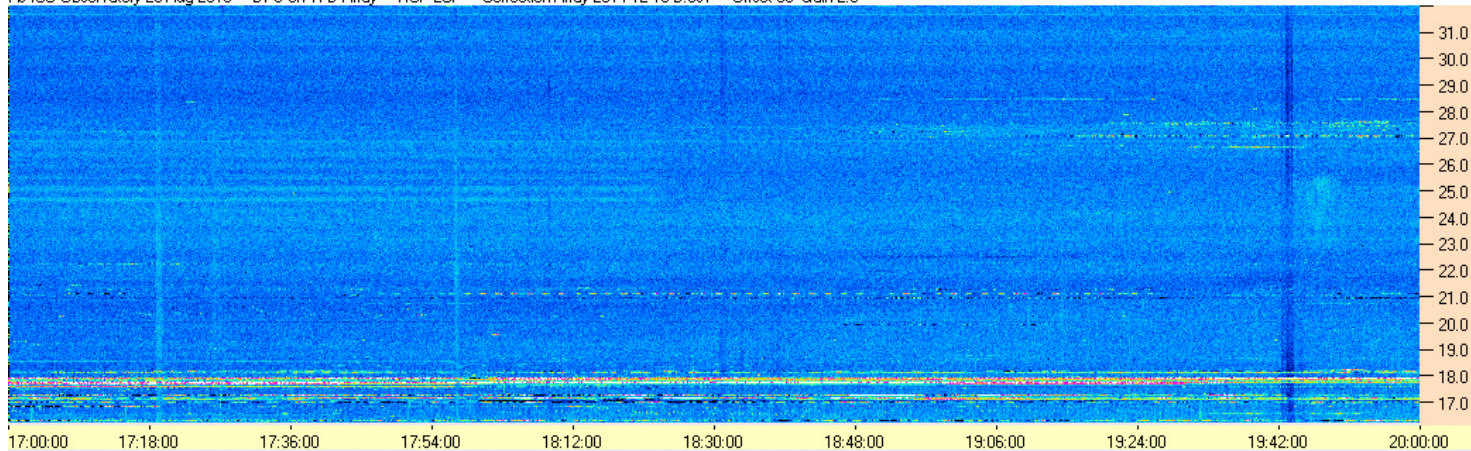
AJ4CO Observatory 28 Aug 2016 - DPS on TFD Array - RCP - Correction Array 2014 12 18 B.csv - Offset 2050 Gain 3.0



AJ4CO Observatory 28 Aug 2016 - DPS on TFD Array - LCP - Correction Array 2014 12 18 B.csv - Offset 2050 Gain 3.0



AJ4CO Observatory 28 Aug 2016 - DPS on TFD Array - RCP-LCP - Correction Array 2014 12 18 B.csv - Offset 50 Gain 2.0



AJ4CO Observatory 28 Aug 2016 - DPS on TFD Array - LCP-RCP - Correction Array 2014 12 18 B.csv - Offset 50 Gain 2.0

