

Io-A.

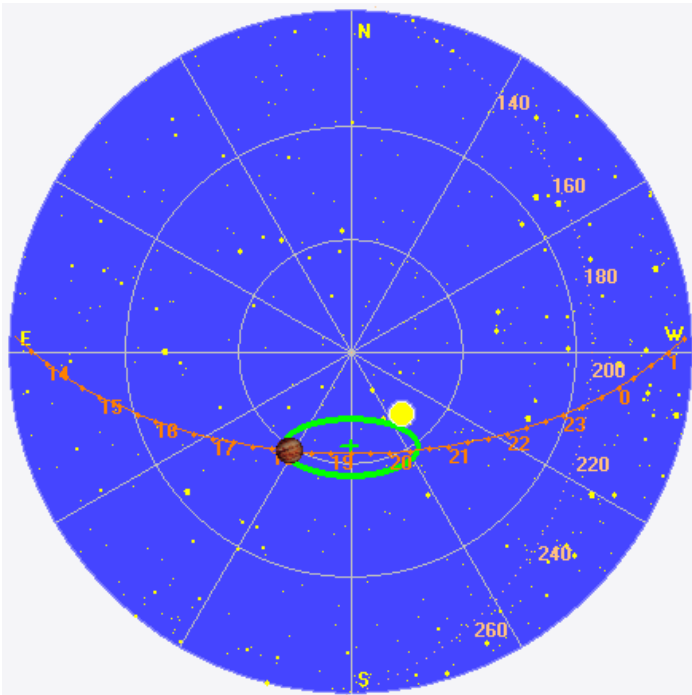
RCP dominant L bursting 1730–1910 UTC from 16 to 28 MHz, vertex late arcs.

Brief bout of strong RFI from 1831 to 1840 UTC.

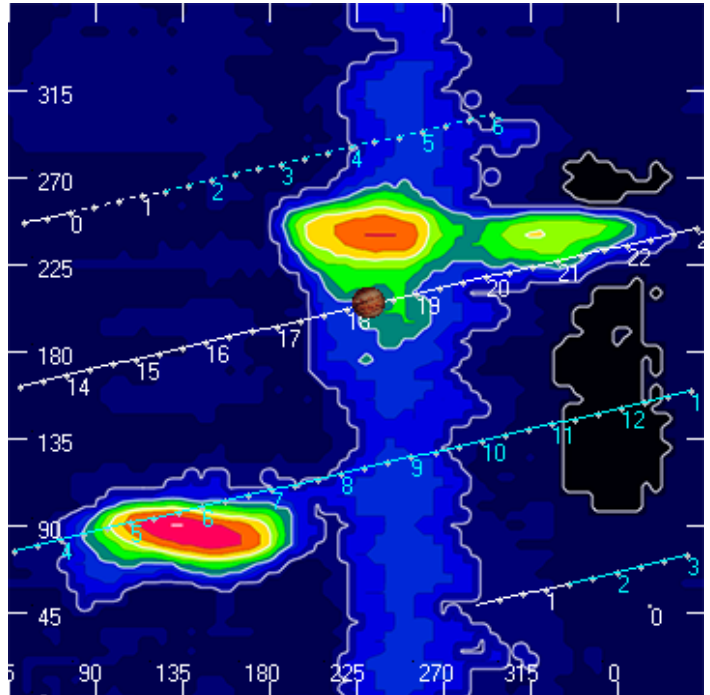
Jupiter was  $-29^\circ$  to  $-4^\circ$  off axis.

Jupiter was trailing the Sun by  $29^\circ$ .

Jupiter's location at midpoint of observed emission (1820 UTC)

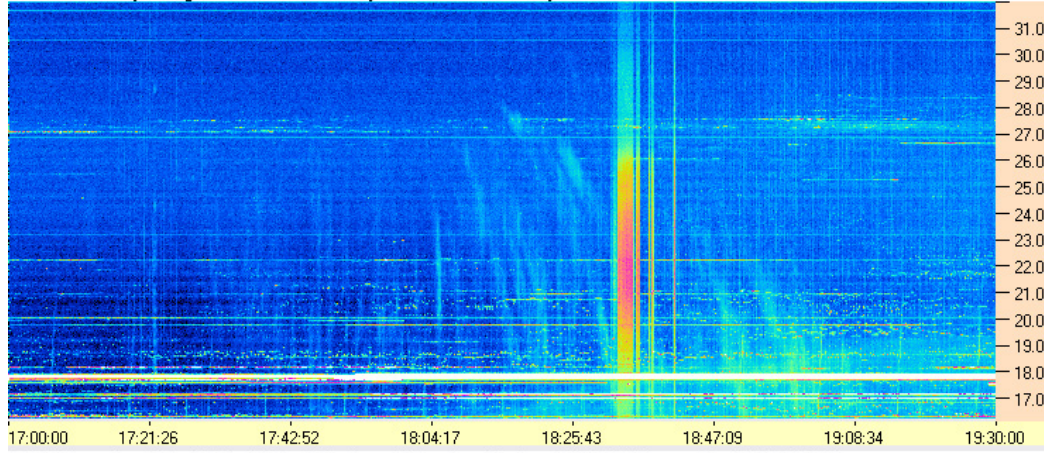


Sky map with array HPBW in green.

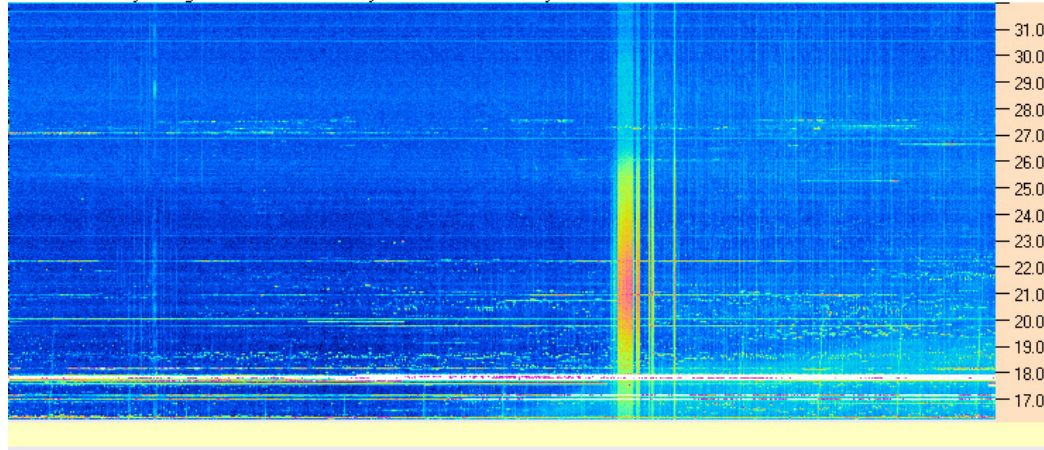


CML-Io phase plane.

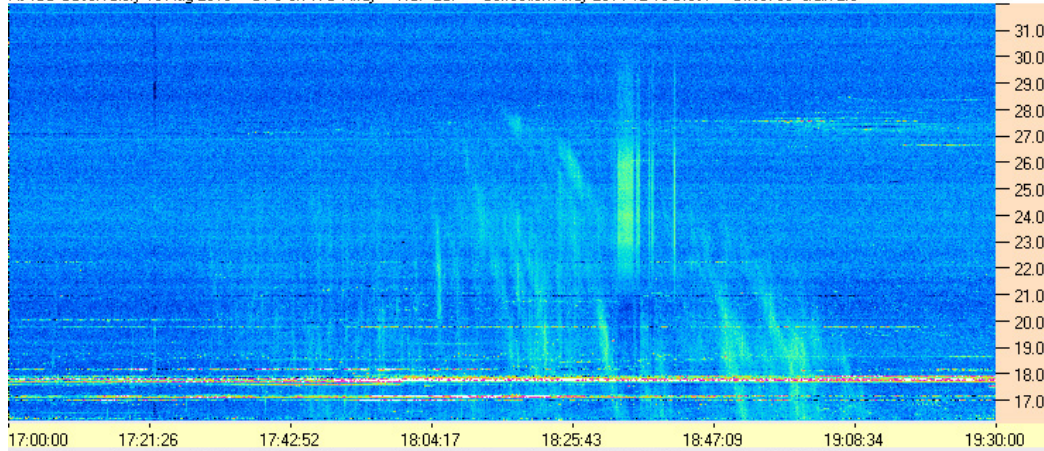
AJ4CO Observatory 19 Aug 2016 - DPS on TFD Array - RCP - Correction Array 2014 12 18 B.csv - Offset 2050 Gain 5.0



AJ4CO Observatory 19 Aug 2016 - DPS on TFD Array - LCP - Correction Array 2014 12 18 B.csv - Offset 2050 Gain 5.0



AJ4CO Observatory 19 Aug 2016 - DPS on TFD Array - RCP-LCP - Correction Array 2014 12 18 B.csv - Offset 50 Gain 2.0



AJ4CO Observatory 19 Aug 2016 - DPS on TFD Array - LCP-RCP - Correction Array 2014 12 18 B.csv - Offset 50 Gain 2.0

