

Adding to Tom's nice report, here's some fairly well defined Io-C.

Some very nice N events.

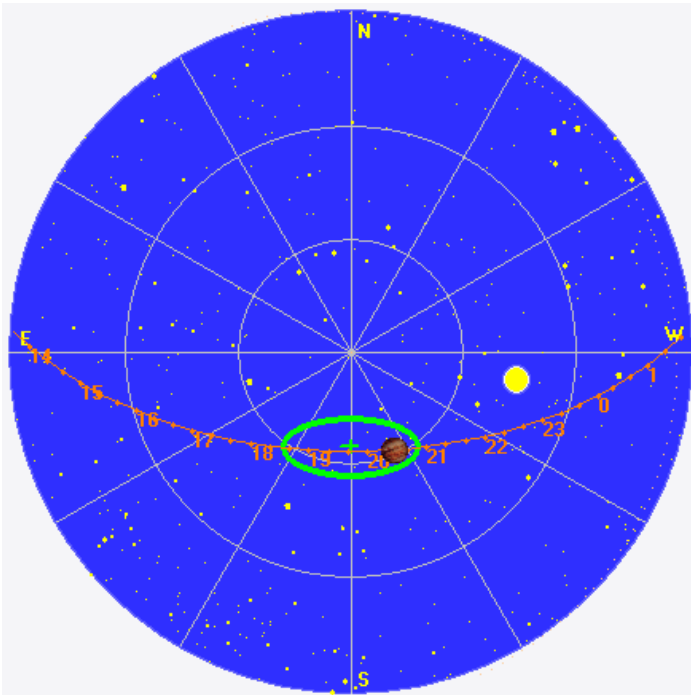
Brief bout of line noise circa 1925 UTC, two instances of Type III solar RFI at 1954 and 2105 UTC.

LCP dominant N events 1906–2149 UTC from 16 to 21 MHz, vertex late arcs.

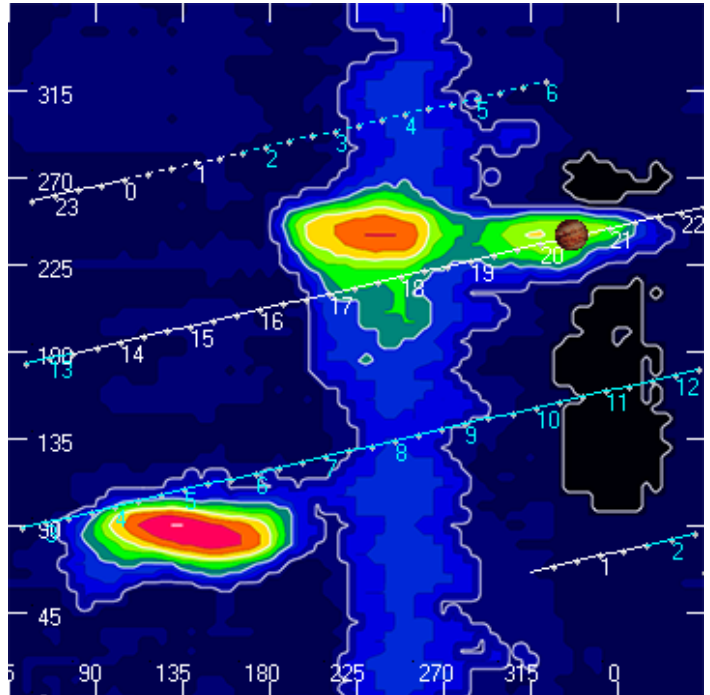
Jupiter was -10° to $+31^\circ$ off axis.

Jupiter was trailing the Sun by 34° .

Jupiter's location at midpoint of observed emission (2027 UTC)

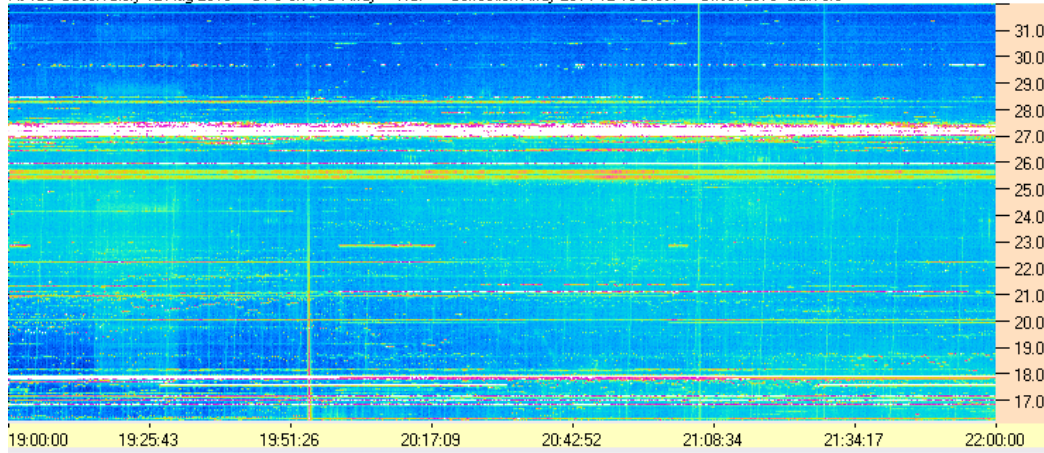


Sky map with array HPBW in green.

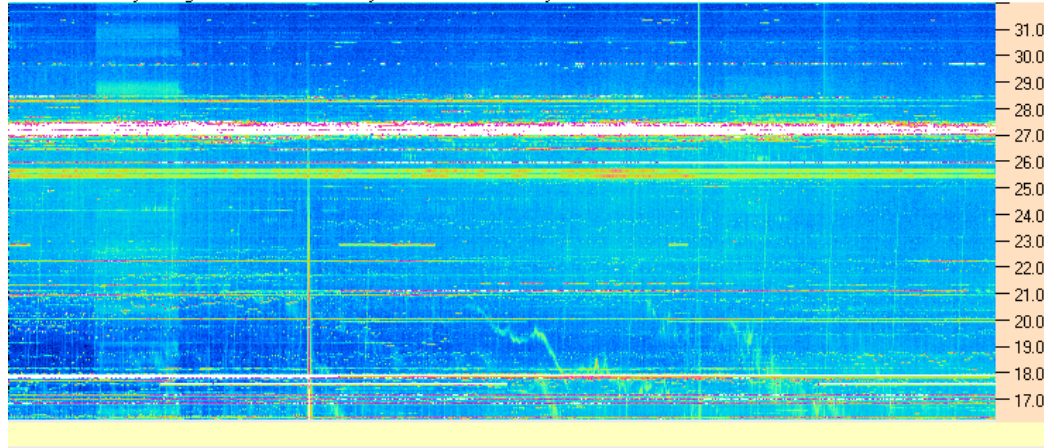


CML-Io phase plane.

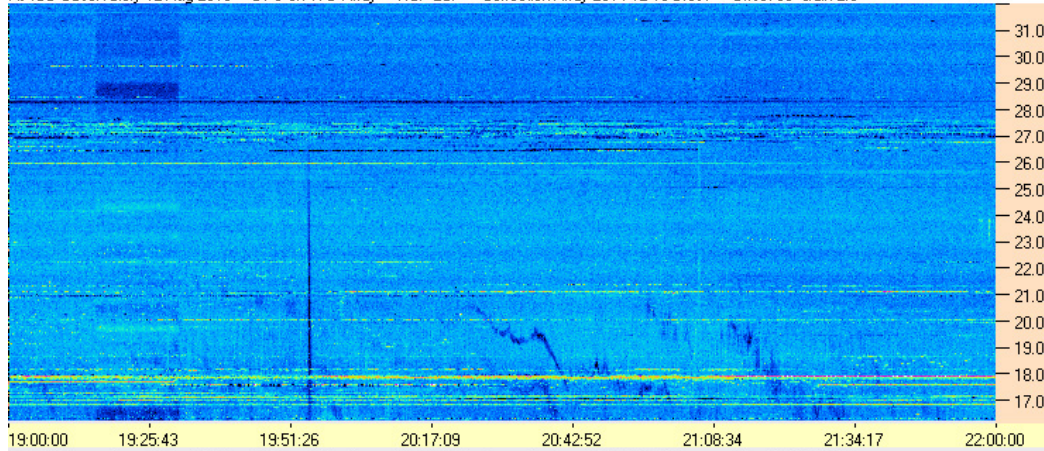
AJ4CO Observatory 12 Aug 2016 - DPS on TFD Array - RCP - Correction Array 2014 12 18 B.csv - Offset 2075 Gain 5.0



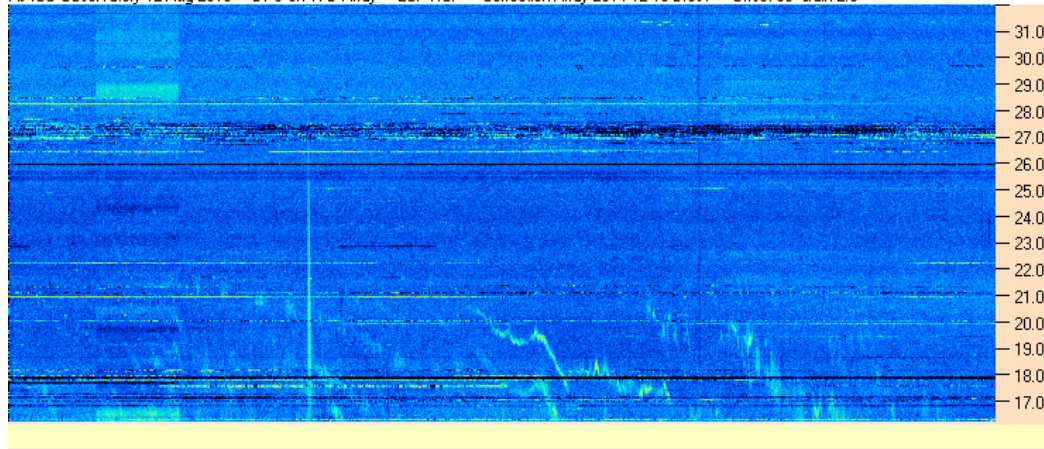
AJ4CO Observatory 12 Aug 2016 - DPS on TFD Array - LCP - Correction Array 2014 12 18 B.csv - Offset 2075 Gain 5.0

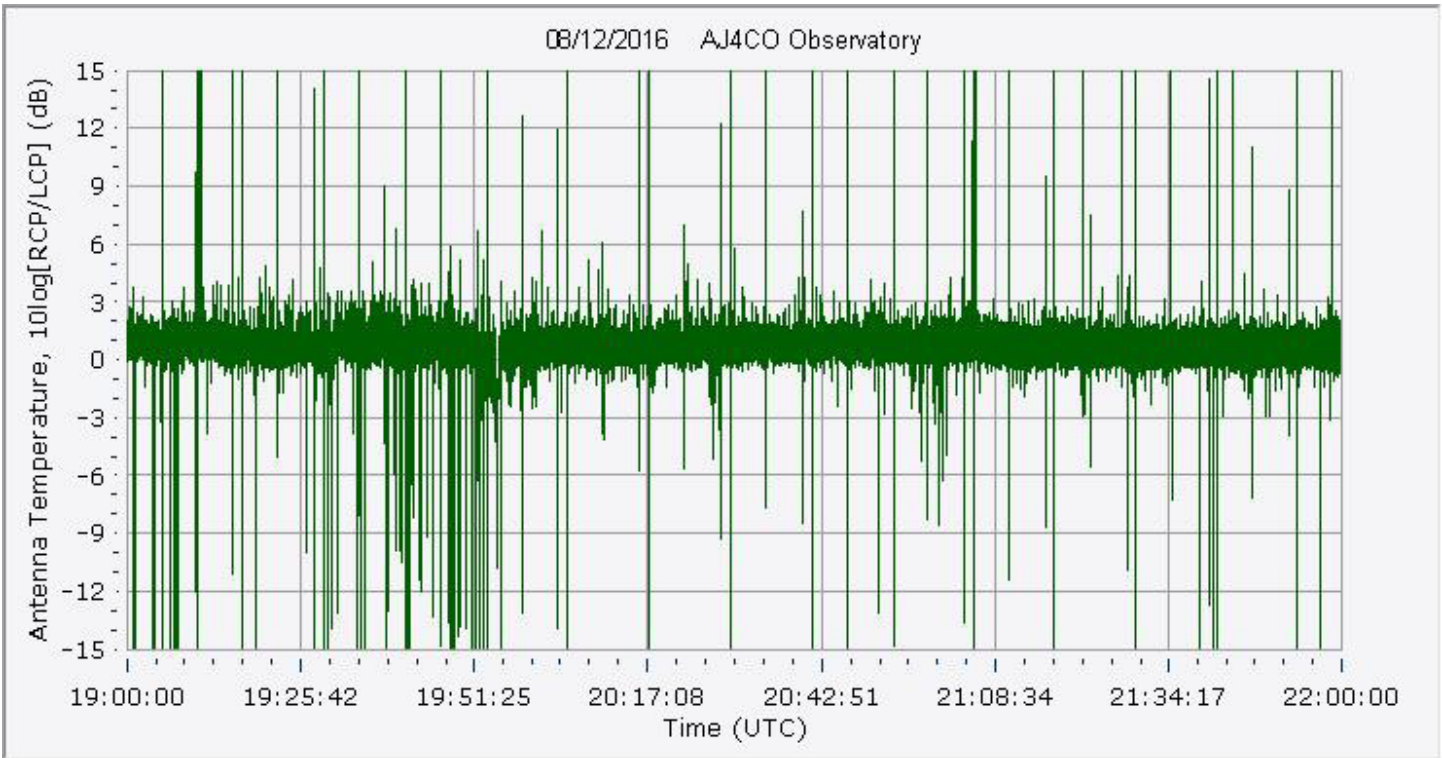
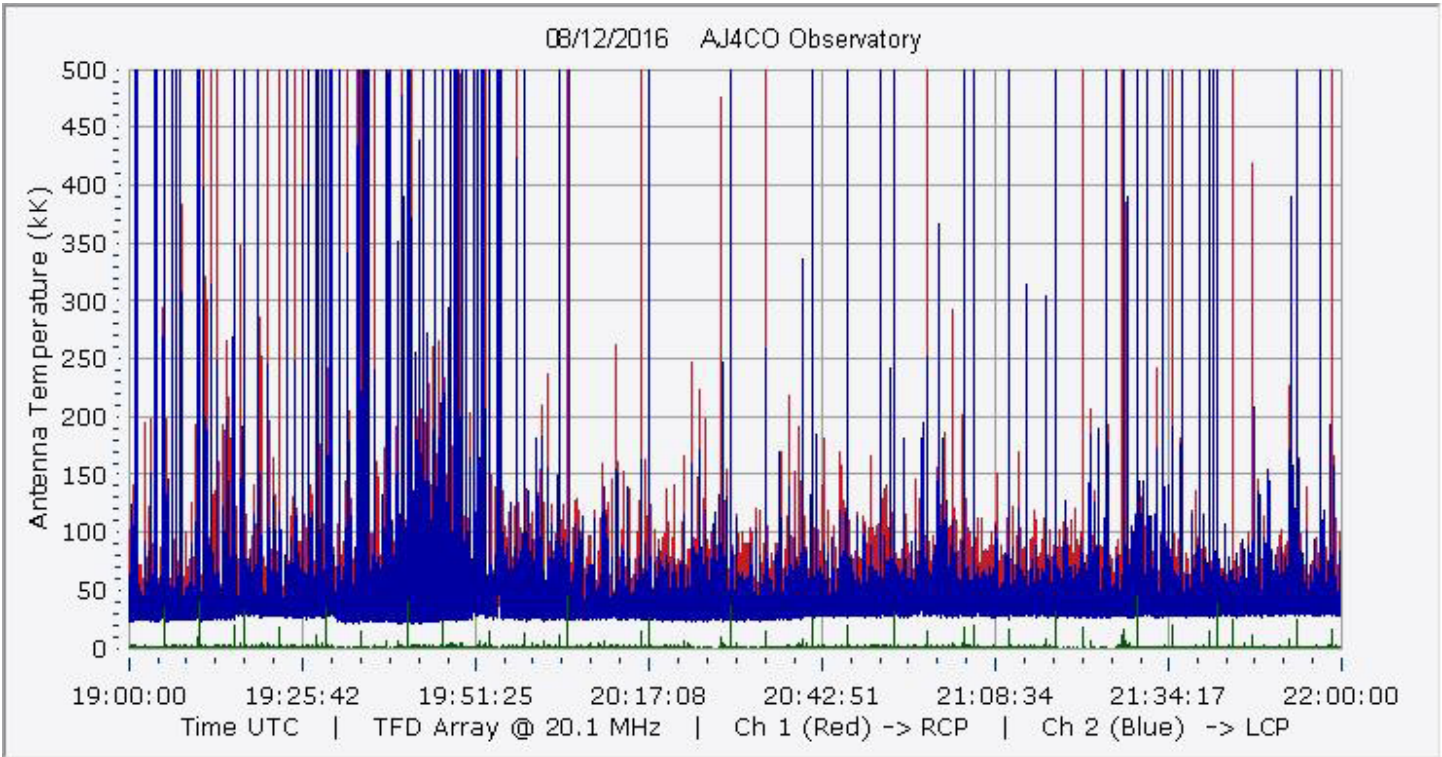


AJ4CO Observatory 12 Aug 2016 - DPS on TFD Array - RCP-LCP - Correction Array 2014 12 18 B.csv - Offset 50 Gain 2.0

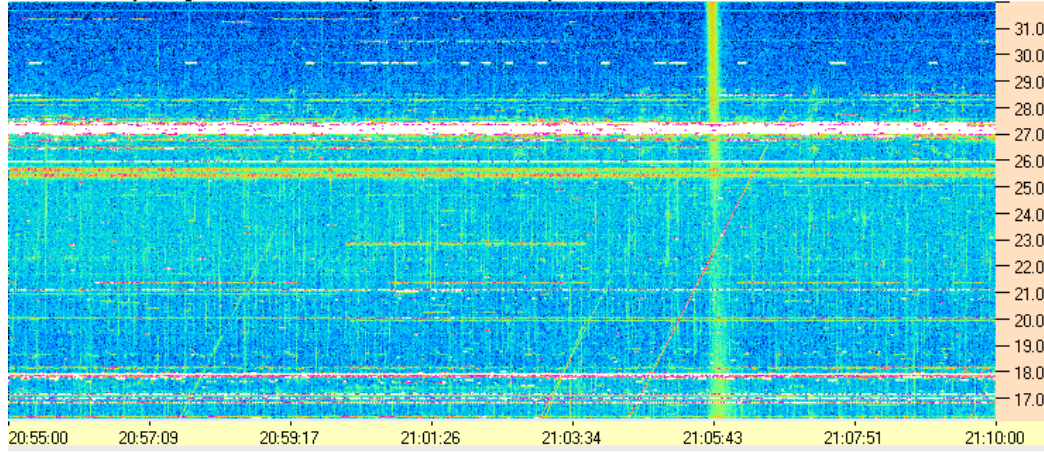


AJ4CO Observatory 12 Aug 2016 - DPS on TFD Array - LCP-RCP - Correction Array 2014 12 18 B.csv - Offset 50 Gain 2.0

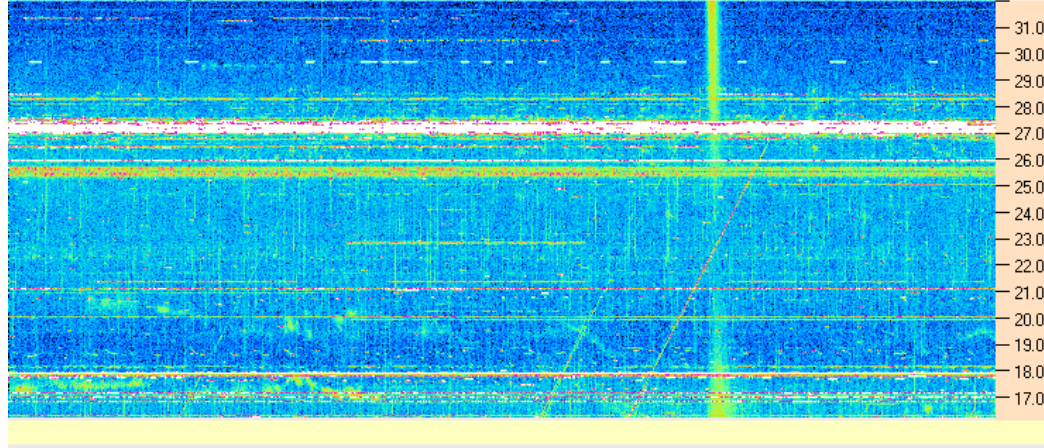




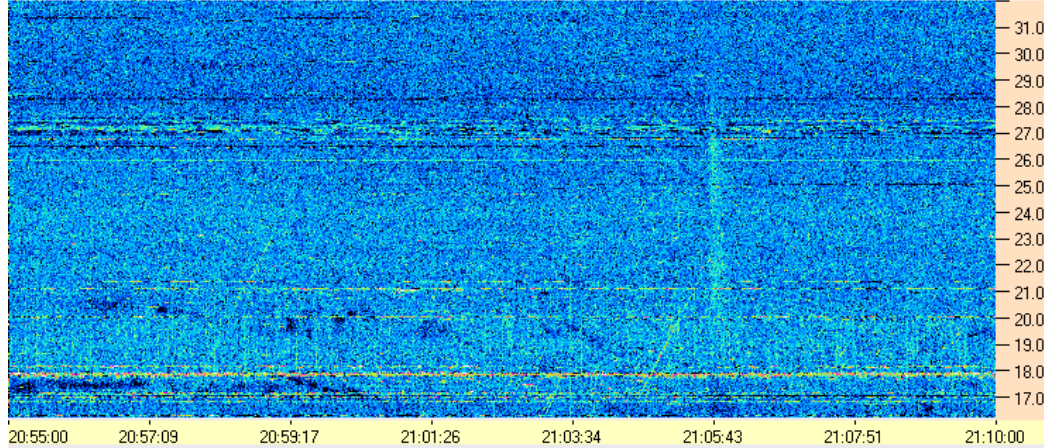
AJ4CO Observatory 12 Aug 2016 - DPS on TFD Array - RCP - Correction Array 2014 12 18 B.csv - Offset 2075 Gain 5.0



AJ4CO Observatory 12 Aug 2016 - DPS on TFD Array - LCP - Correction Array 2014 12 18 B.csv - Offset 2075 Gain 5.0



AJ4CO Observatory 12 Aug 2016 - DPS on TFD Array - RCP-LCP - Correction Array 2014 12 18 B.csv - Offset 50 Gain 2.0



AJ4CO Observatory 12 Aug 2016 - DPS on TFD Array - LCP-RCP - Correction Array 2014 12 18 B.csv - Offset 50 Gain 2.0

