

Here's some surprise non-Io-A and some brief non-Io-C from 8/7.

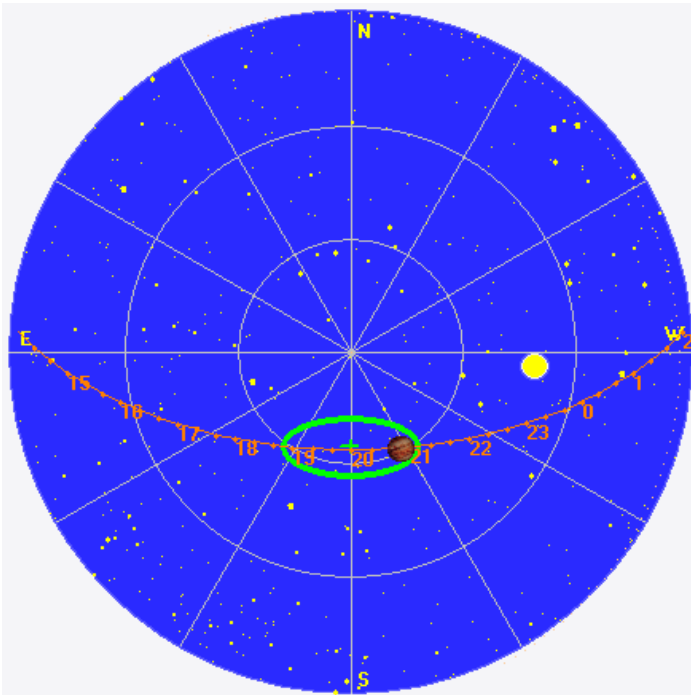
RCP dominant L bursting 2014-2106 UTC from 16 to 27 MHz, negative drift emission envelope (non-Io-A)

LCP dominant L bursting 2121-2127 UTC from 16 to 19 MHz, negative drift emission envelope. (non-Io-C)

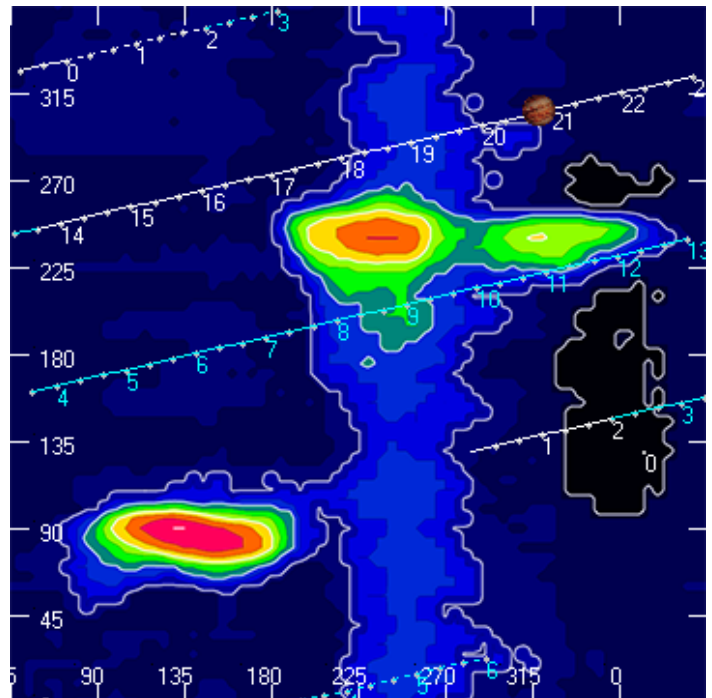
Jupiter was +3° to +21° off axis.

Jupiter was trailing the Sun by 38°.

Jupiter's location at midpoint of observed emission (2050 UTC)

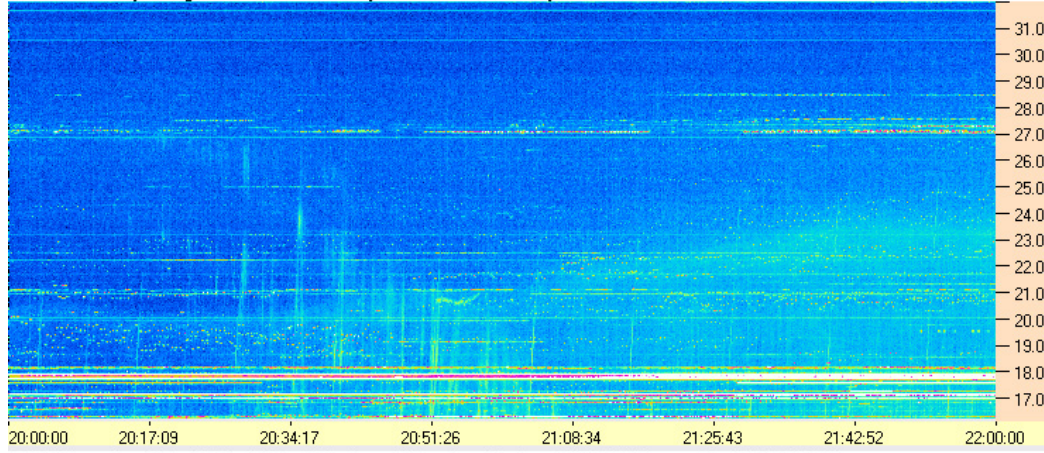


Sky map with array HPBW in green.

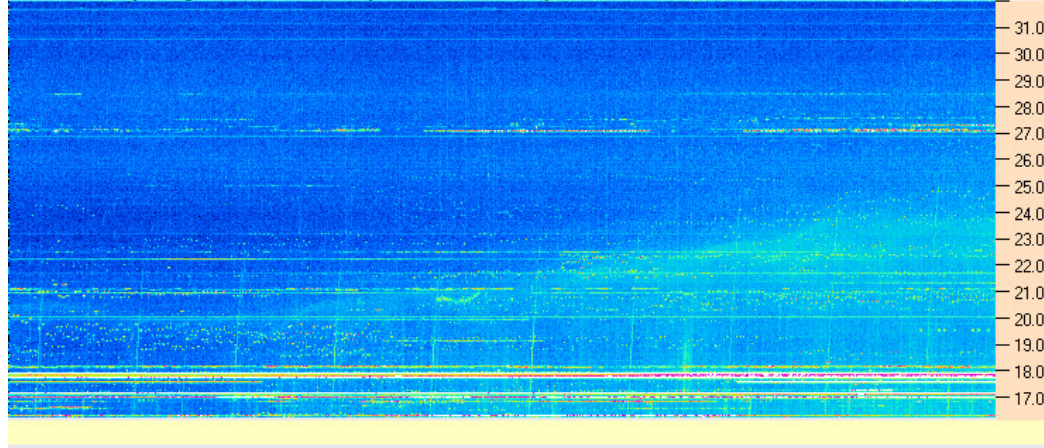


CML-Io phase plane.

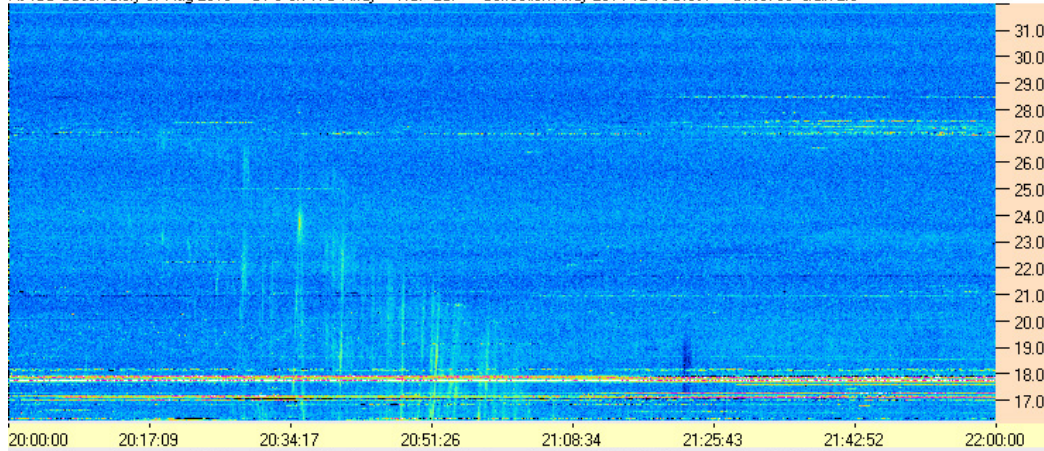
AJ4CO Observatory 07 Aug 2016 - DPS on TFD Array - RCP - Correction Array 2014 12 18 B.csv - Offset 2050 Gain 5.0



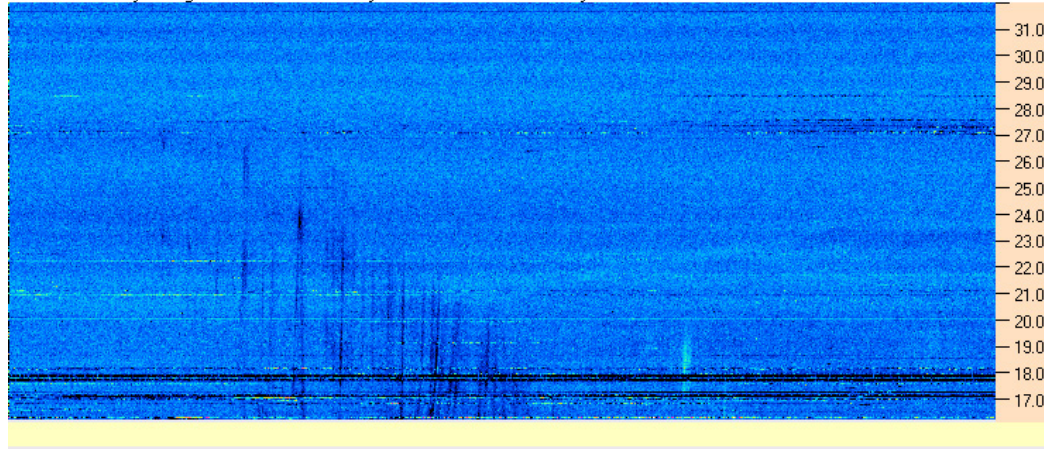
AJ4CO Observatory 07 Aug 2016 - DPS on TFD Array - LCP - Correction Array 2014 12 18 B.csv - Offset 2050 Gain 5.0

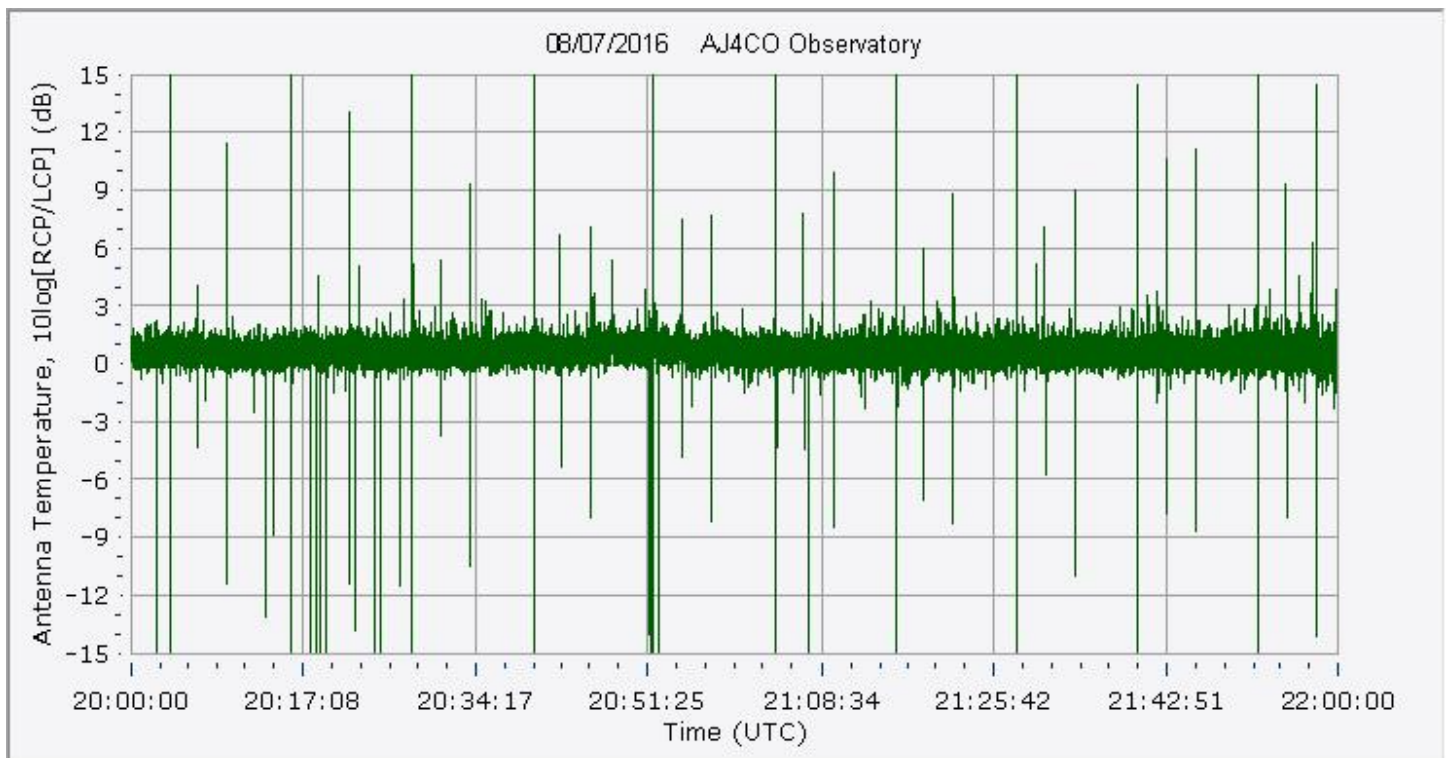
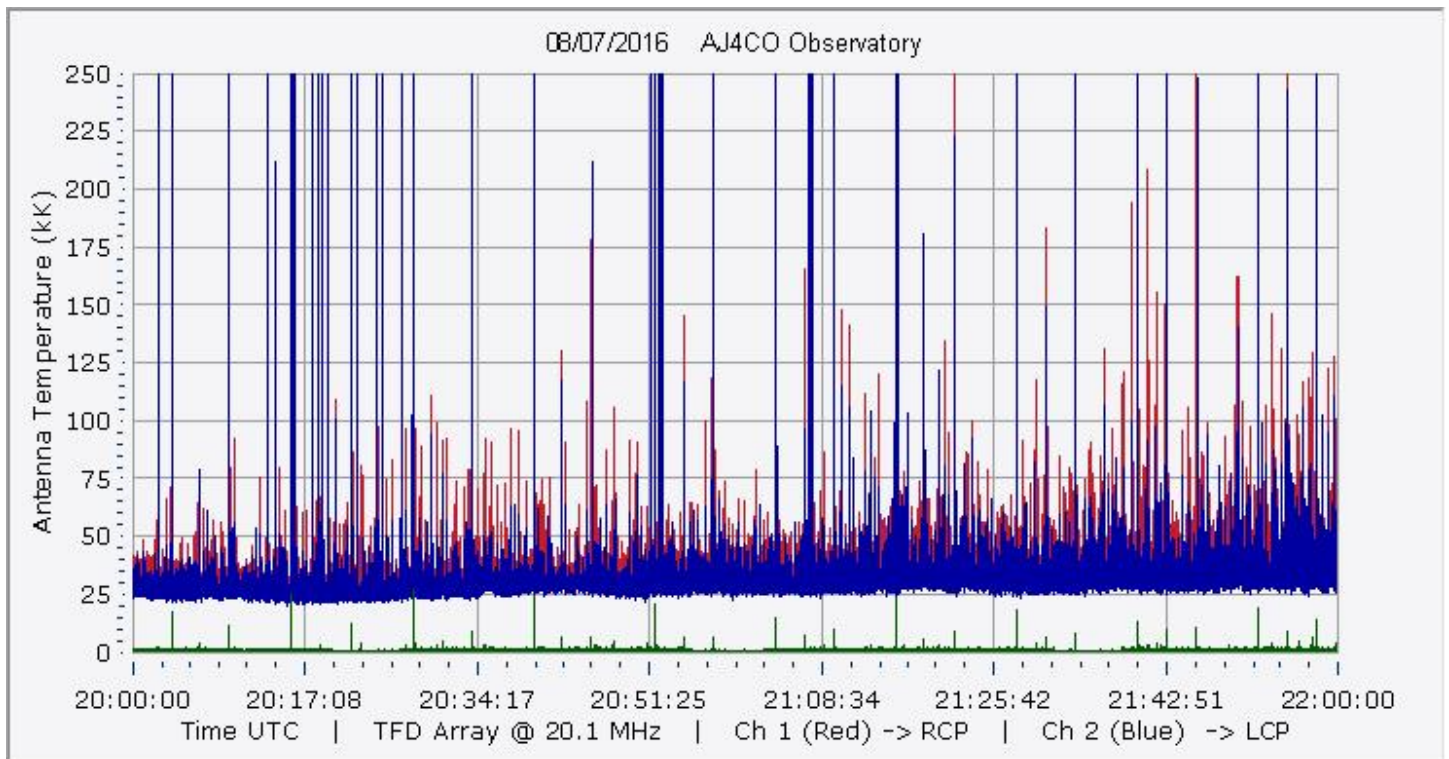


AJ4CO Observatory 07 Aug 2016 - DPS on TFD Array - RCP-LCP - Correction Array 2014 12 18 B.csv - Offset 50 Gain 2.0



AJ4CO Observatory 07 Aug 2016 - DPS on TFD Array - LCP-RCP - Correction Array 2014 12 18 B.csv - Offset 50 Gain 2.0





08/07/2016 AJ4CO Observatory

