

Subject: [radiojove-data] 05 Aug 2016 Io-C

From: Dave Typinski <davetyp@typnet.net>

Date: 08/07/2016 01:31

To: RadioJove-Data <radiojove-data@lists.nasa.gov>

Adding to Tom & Nathan & Wes's great reports, here's some really nice Io-C from Friday afternoon.

Tons of really strong wide-band S bursting (around 1 MK @ 20 MHz in the TFD array) and several nice narrow-band S burst trains.

Pretty impressive show from Jupiter at only seven weeks from conjunction.

LCP dominant S bursting 1746-2028 UTC from 16 to 26 MHz, vertex late arcs.

LCP dominant narrow band S burst trains 1814-1940 UTC from 19 to 26 MHz, vertex late arcs.

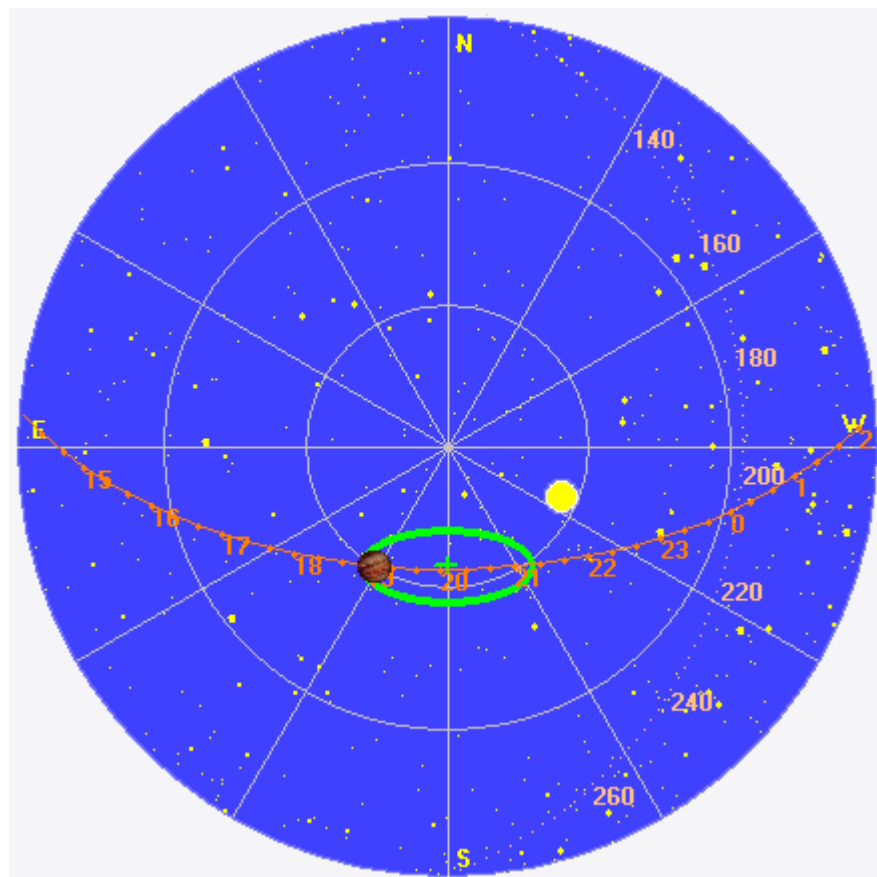
Jupiter was -36° to $+5^\circ$ off axis.

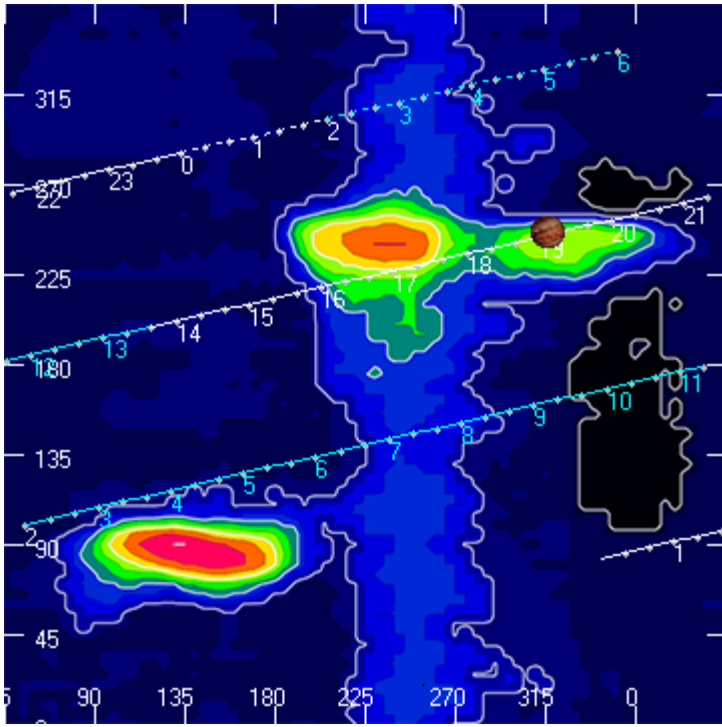
Jupiter was trailing the Sun by 39° .

--

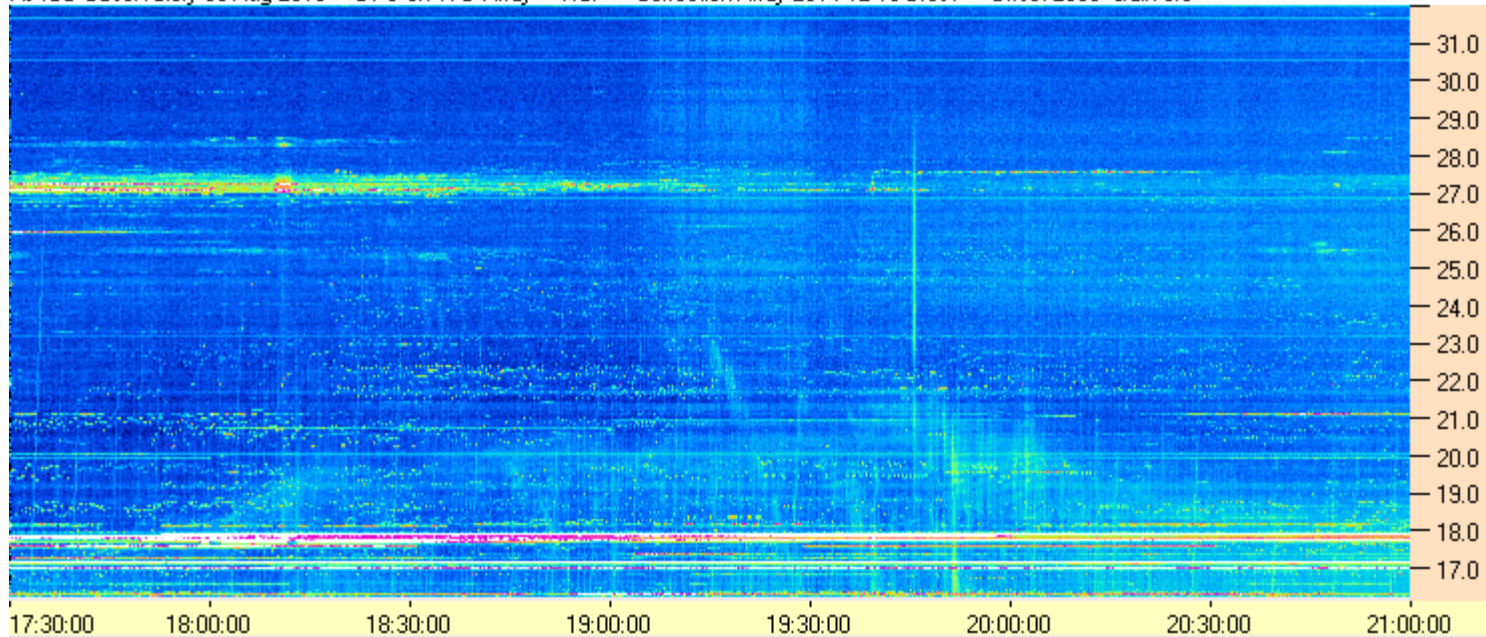
Dave

AJ4CO Observatory 05 Aug 2016, log entry 743-744

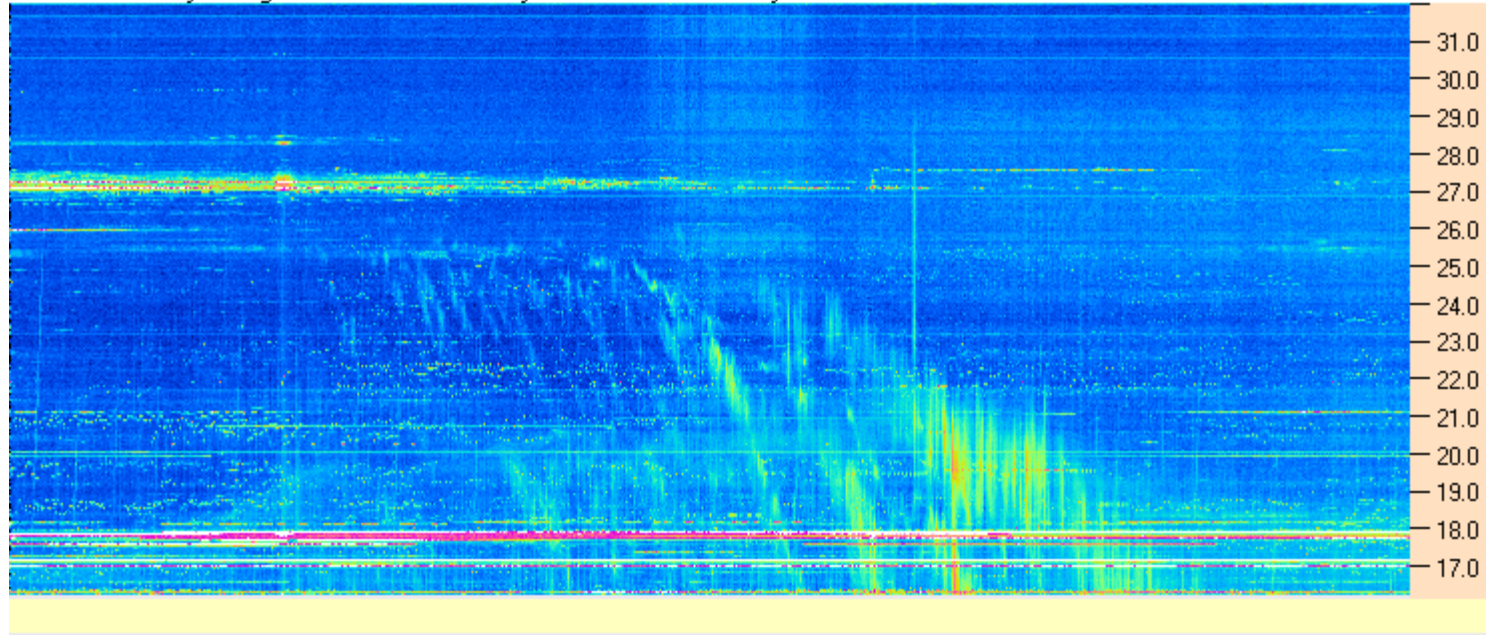




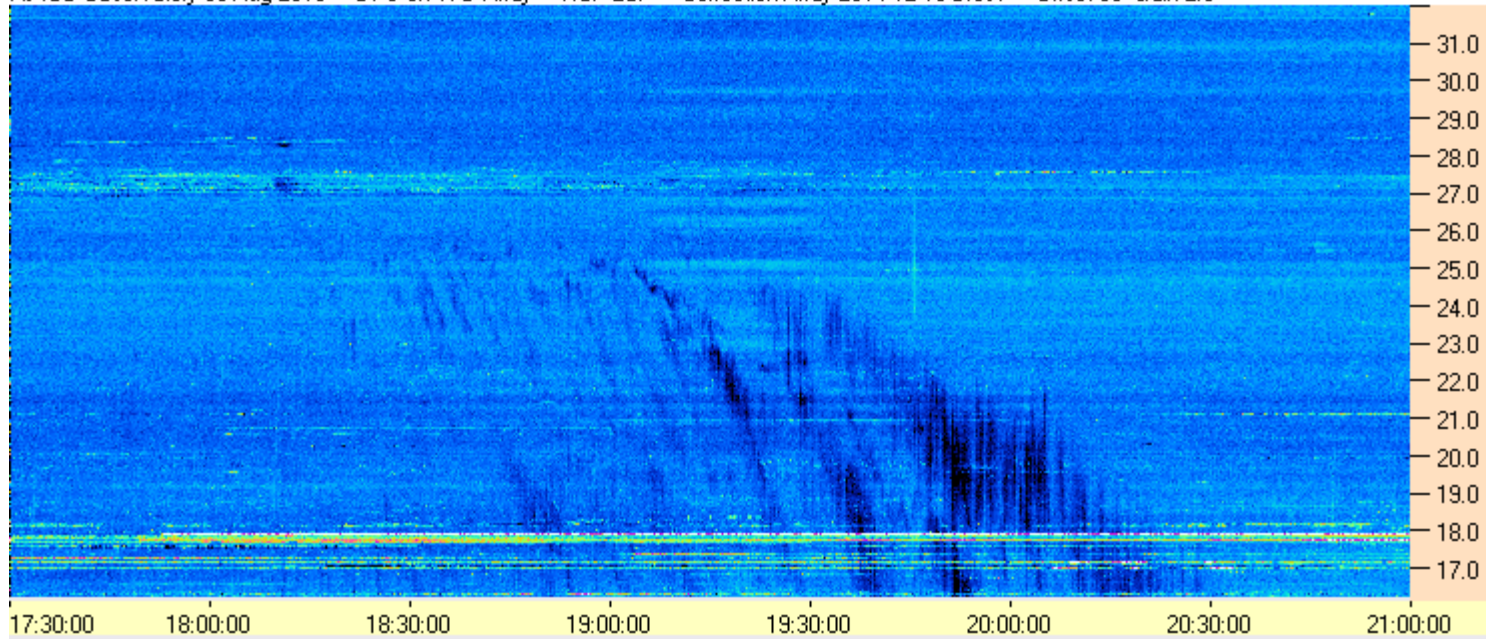
AJ4CO Observatory 05 Aug 2016 - DPS on TFD Array - RCP - Correction Array 2014 12 18 B.csv - Offset 2050 Gain 5.0



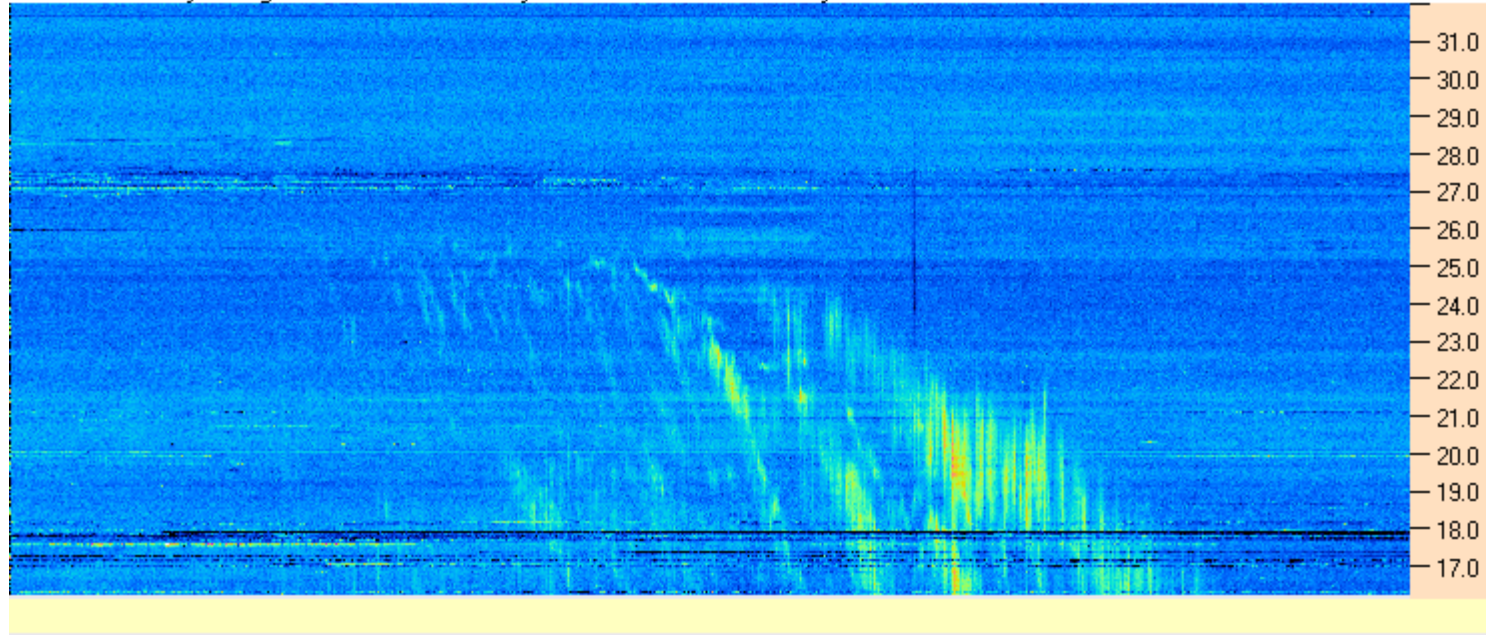
AJ4CO Observatory 05 Aug 2016 - DPS on TFD Array - LCP - Correction Array 2014 12 18 B.csv - Offset 2050 Gain 5.0

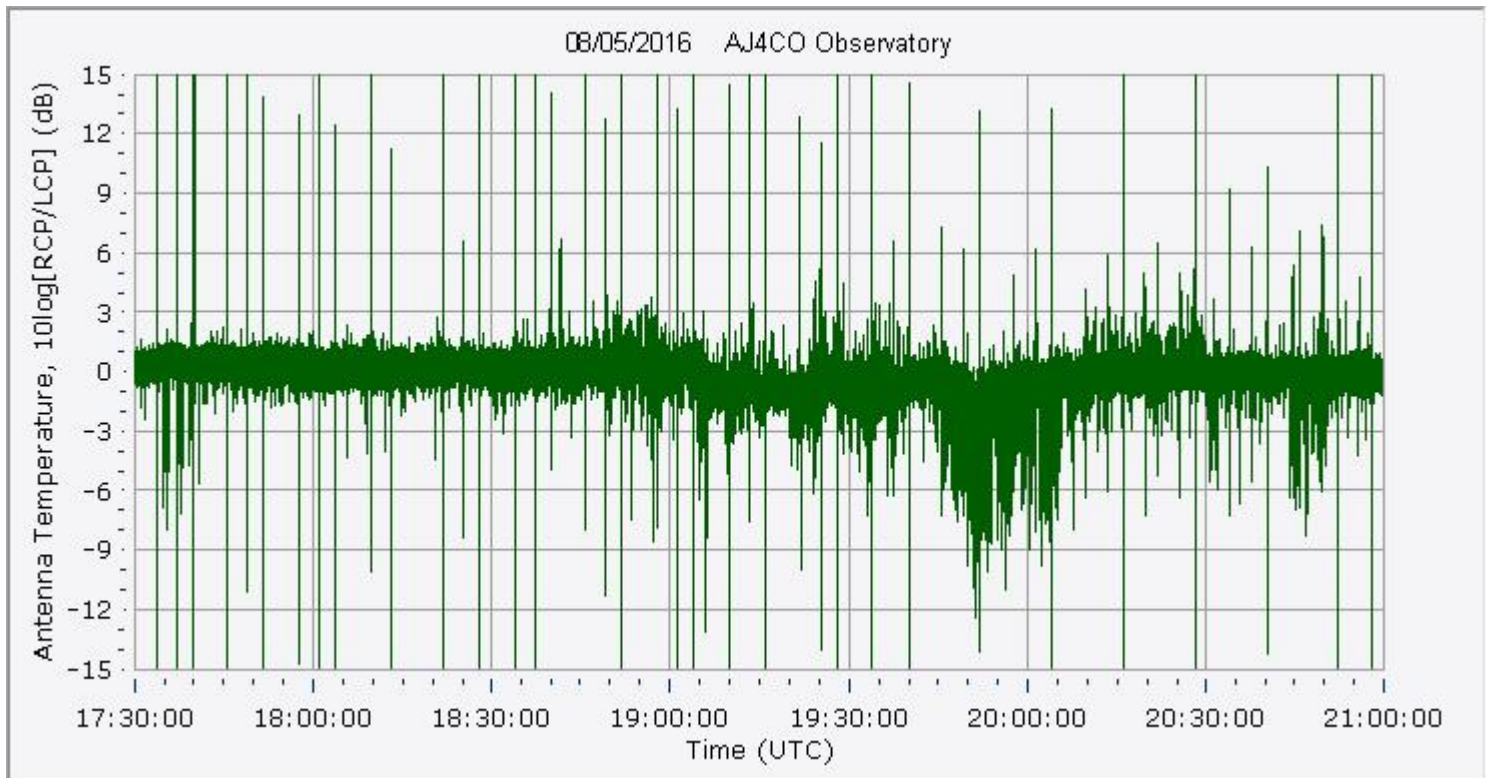
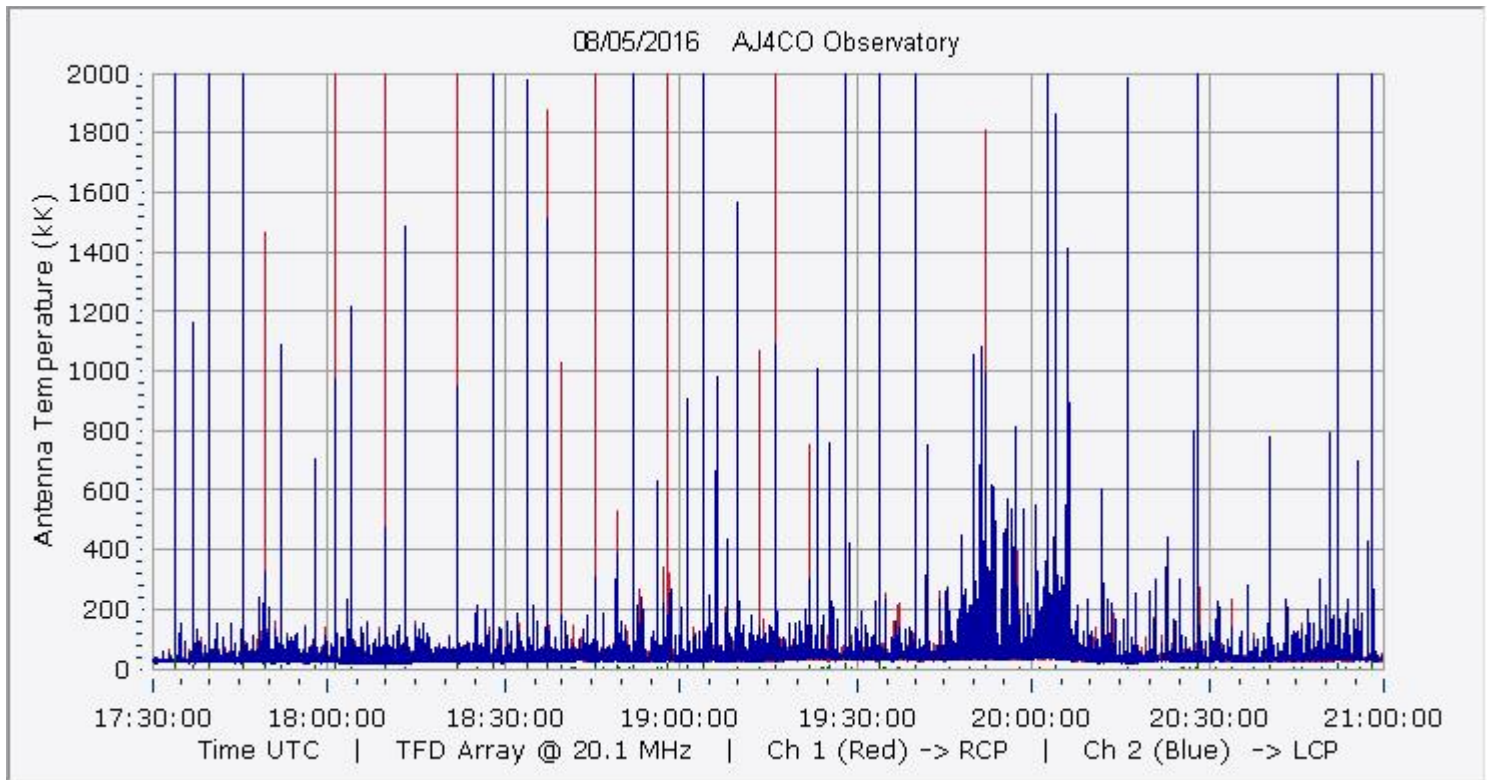


AJ4CO Observatory 05 Aug 2016 - DPS on TFD Array - RCP-LCP - Correction Array 2014 12 18 B.csv - Offset 50 Gain 2.0

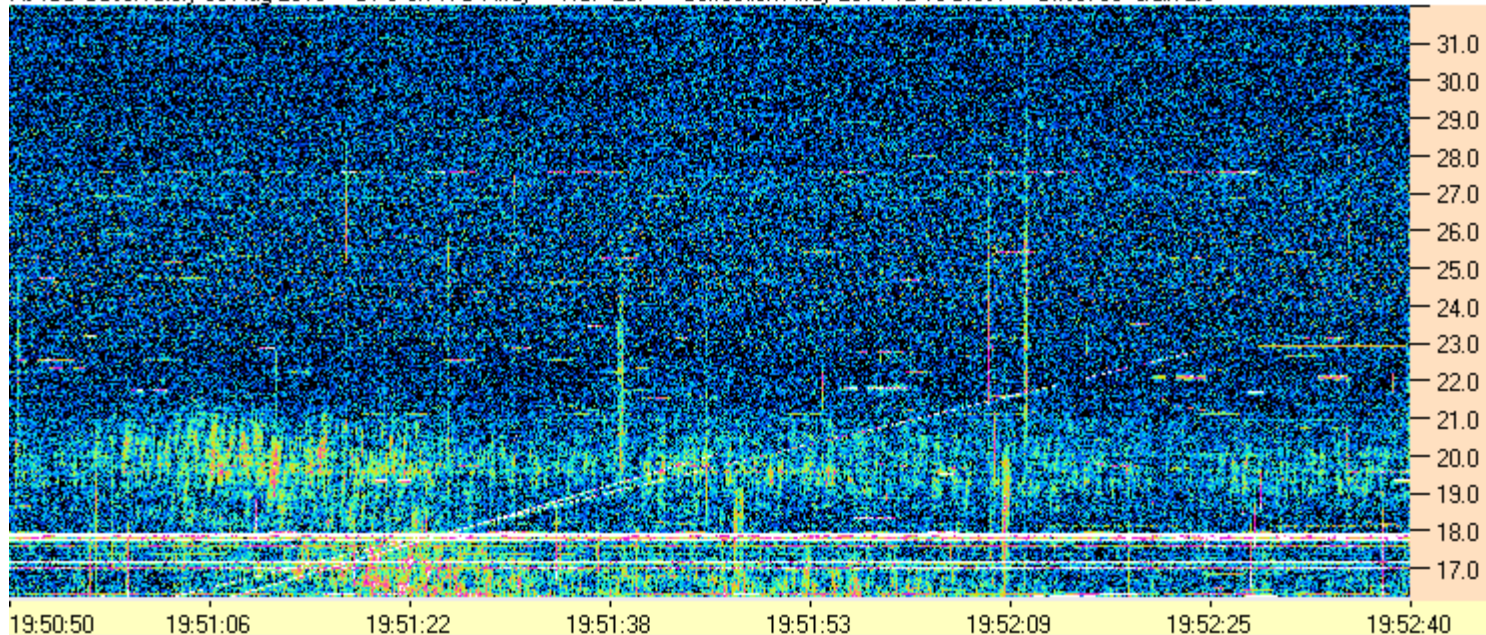


AJ4CO Observatory 05 Aug 2016 - DPS on TFD Array - LCP-RCP - Correction Array 2014 12 18 B.csv - Offset 50 Gain 2.0





AJ4CO Observatory 05 Aug 2016 - DPS on TFD Array - RCP-LCP - Correction Array 2014 12 18 B.csv - Offset 50 Gain 2.0



AJ4CO Observatory 05 Aug 2016 - DPS on TFD Array - LCP-RCP - Correction Array 2014 12 18 B.csv - Offset 50 Gain 2.0

