

Subject: [radiojove-data] 25 Jul 2016 Io-A

From: Dave Typinski <davetyp@typnet.net>

Date: 07/30/2016 13:15

To: RadioJove-Data <radiojove-data@lists.nasa.gov>

Here's some weak Io-A from Monday afternoon.

RCP dominant L bursting 2137-2231 UTC from 16 to 28 MHz, negative emission envelope drift.

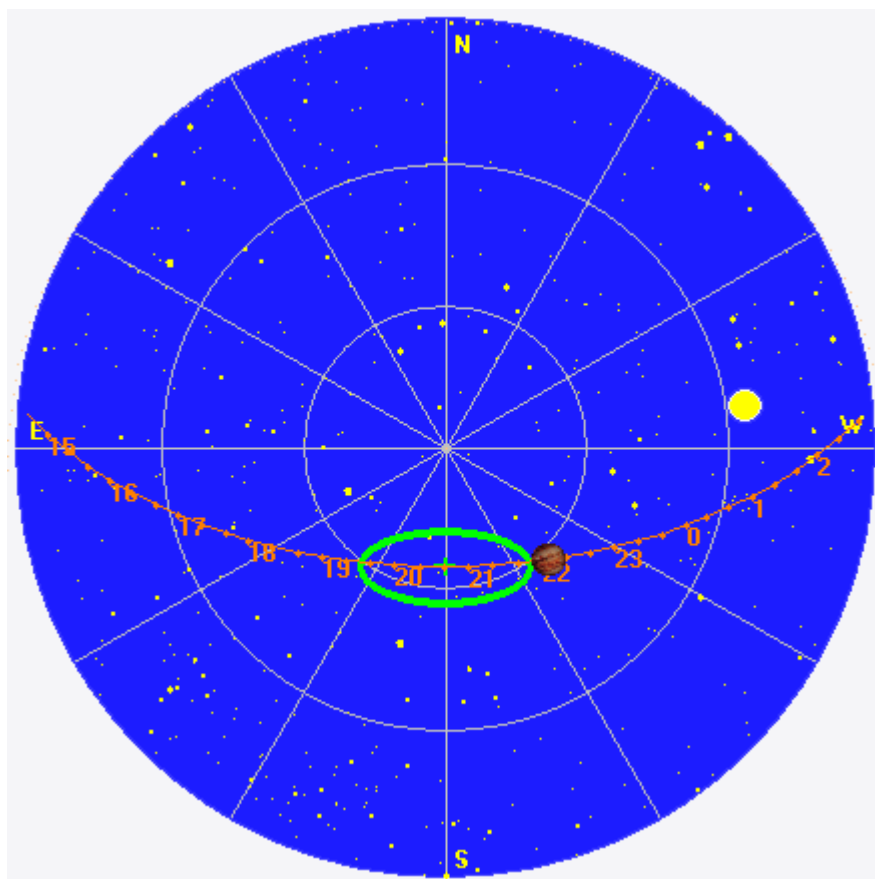
Jupiter was +13° to +27° off axis.

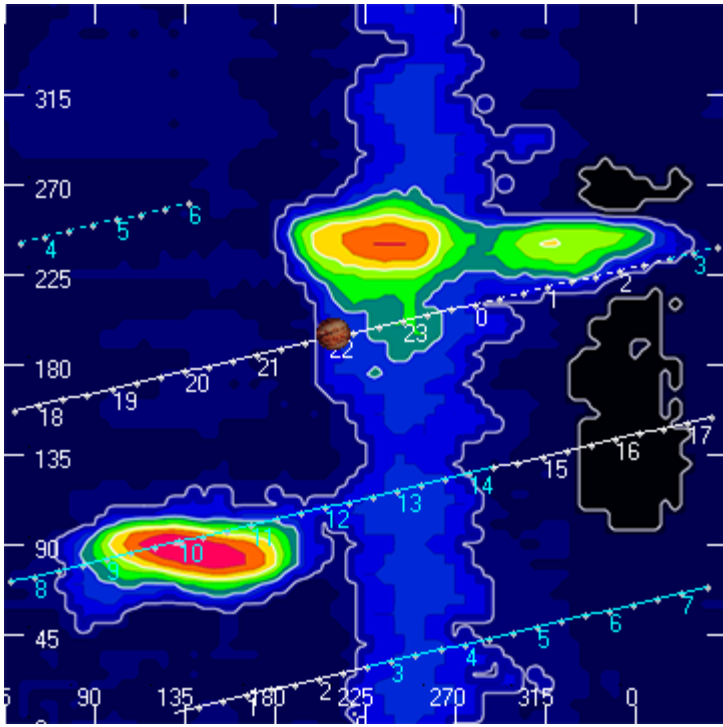
Jupiter was trailing the Sun by 48°.

--

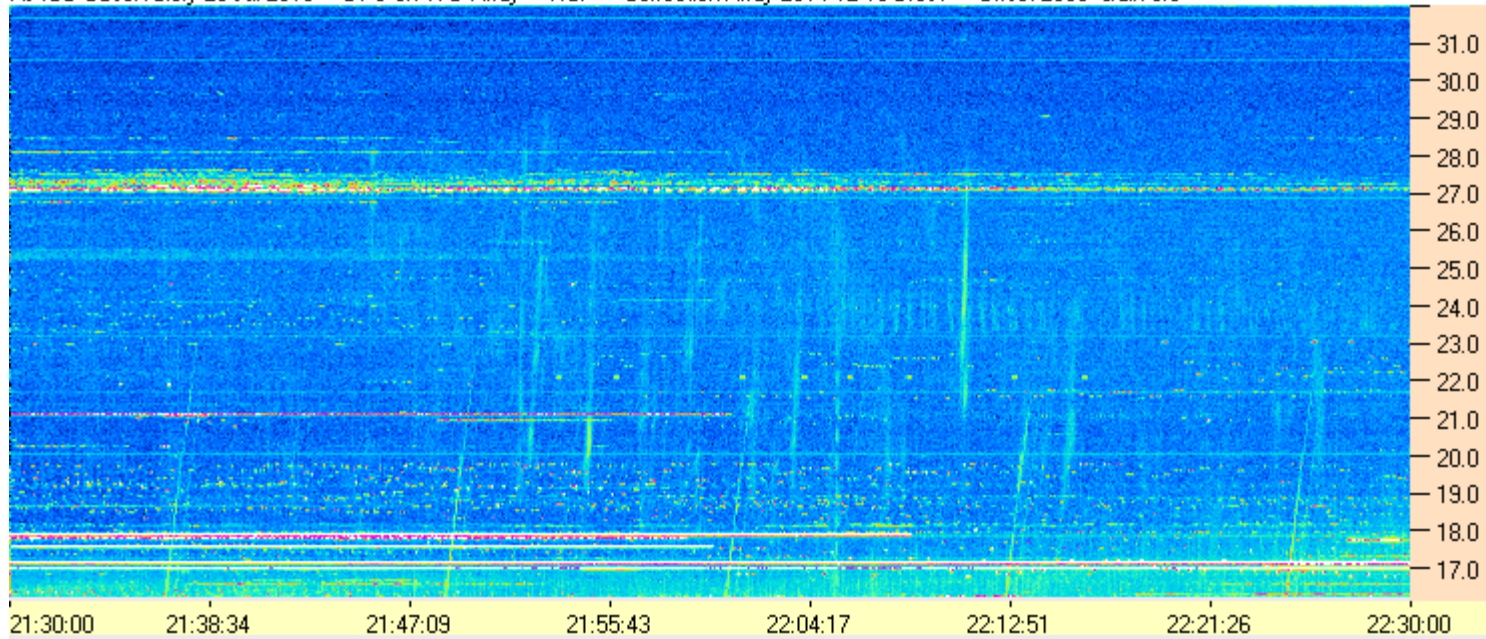
Dave

AJ4CO Observatory 25 Jul 2016, log entry 739

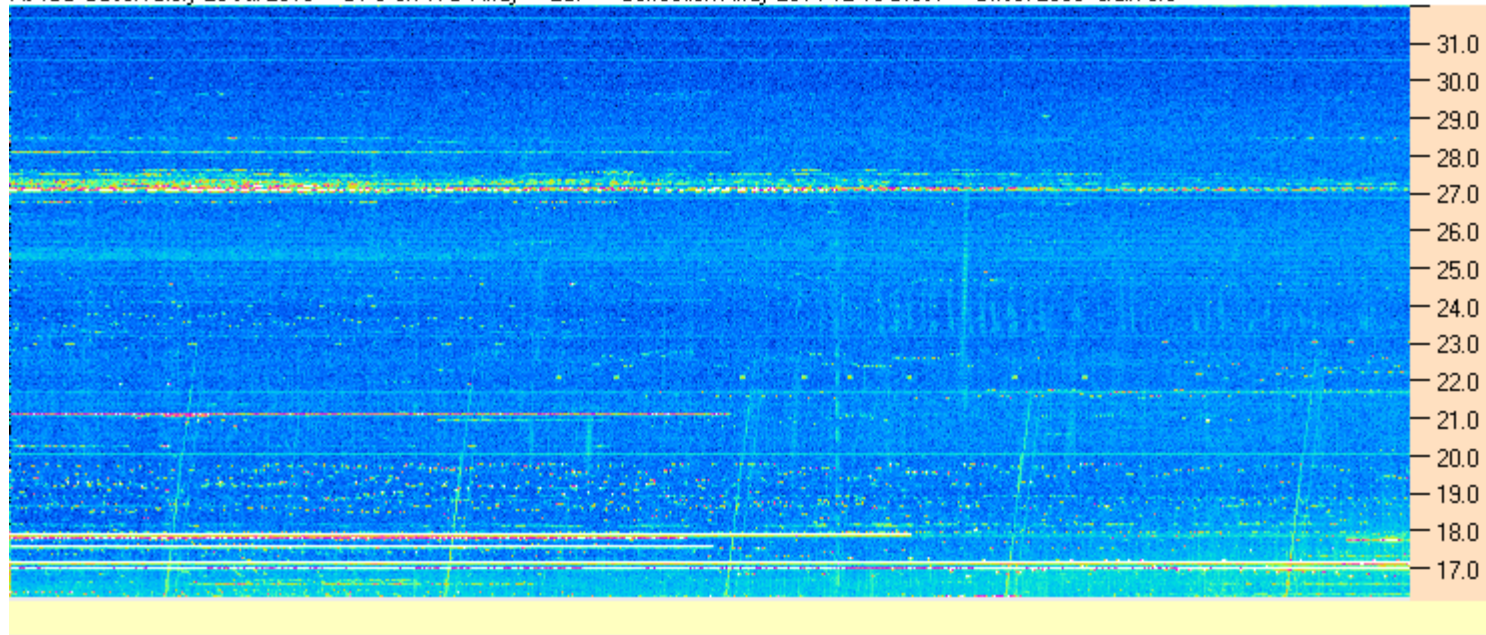




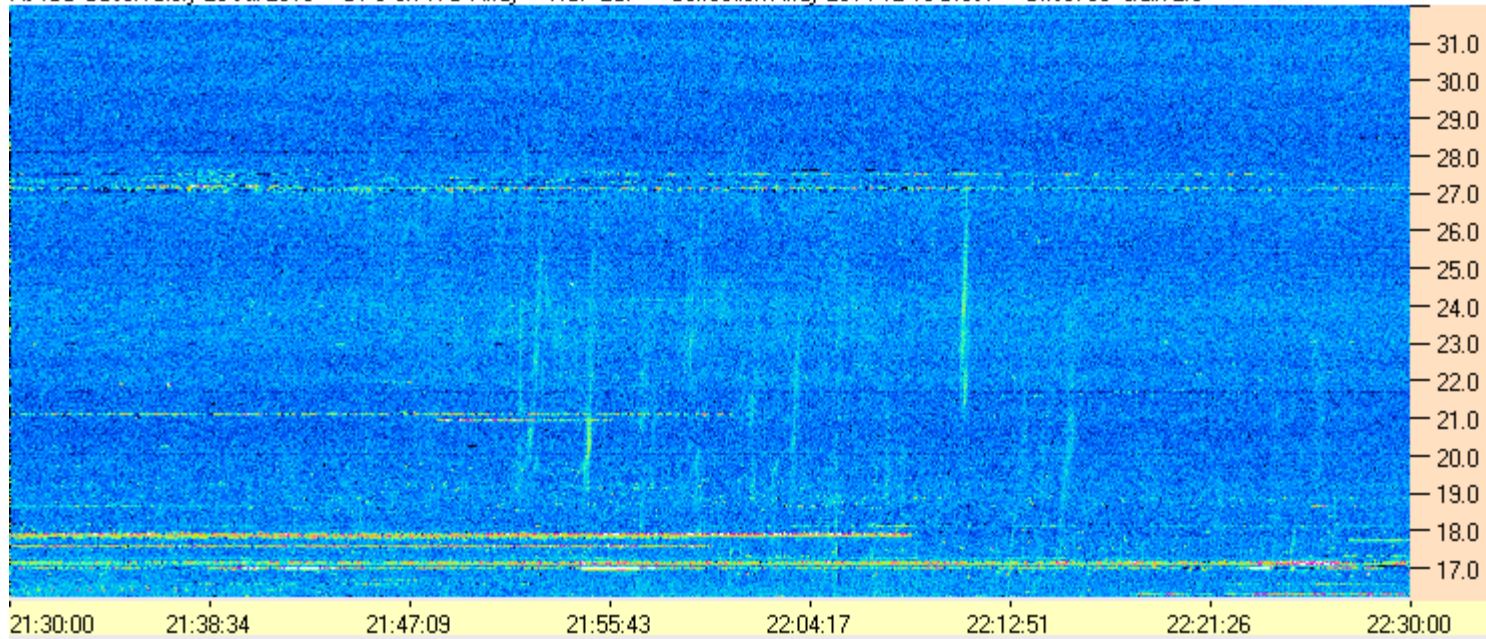
AJ4CO Observatory 25 Jul 2016 - DPS on TFD Array - RCP - Correction Array 2014 12 18 B.csv - Offset 2050 Gain 5.0



AJ4CO Observatory 25 Jul 2016 - DPS on TFD Array - LCP - Correction Array 2014 12 18 B.csv - Offset 2050 Gain 5.0



AJ4CO Observatory 25 Jul 2016 - DPS on TFD Array - RCP-LCP - Correction Array 2014 12 18 B.csv - Offset 50 Gain 2.0



AJ4CO Observatory 25 Jul 2016 - DPS on TFD Array - LCP-RCP - Correction Array 2014 12 18 B.csv - Offset 50 Gain 2.0

