

**Subject:** [radiojove-data] 11 Jul 2016 Io-A/C  
**From:** Dave Typinski <davetyp@typnet.net>  
**Date:** 07/14/2016 19:24  
**To:** RadioJove-Data <radiojove-data@lists.nasa.gov>

Adding to Tom's nice reports, here's some brief, weak Io-A followed by some nice Io-C from 7/11.

Also a honkin' big lightning storm around 2200 UTC.

RCP dominant L bursting 2106-2131 UTC from 21 to 26 MHz, negative emission envelope drift. (Io-A)

LCP dominant narrow band S burst trains 2205-0035 UTC from 16 to 24 MHz, negative emission envelope drift. (Io-C)

LCP dominant L bursting 2217-2354 UTC from 16 to 21 MHz, vertex late arcs. (Io-C).

Jupiter was  $-6^\circ$  to  $+46^\circ$  off axis.

Jupiter was trailing the Sun by  $59^\circ$ .

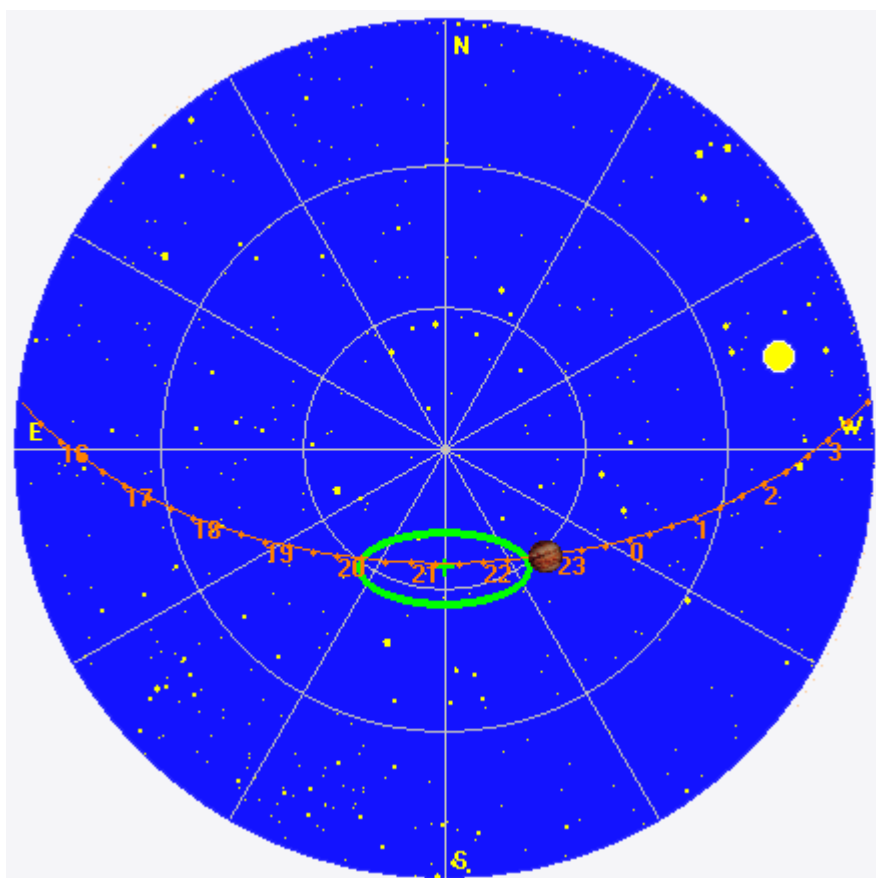
--

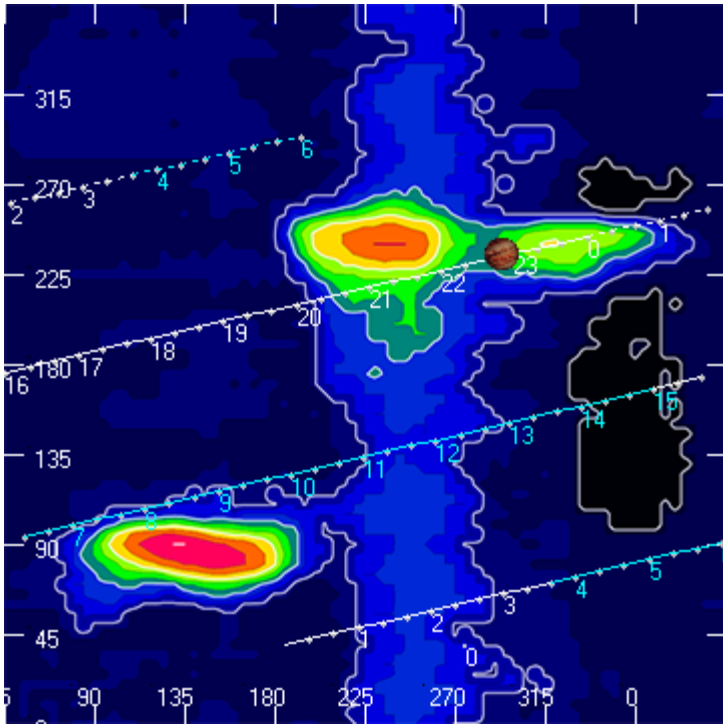
Dave

---

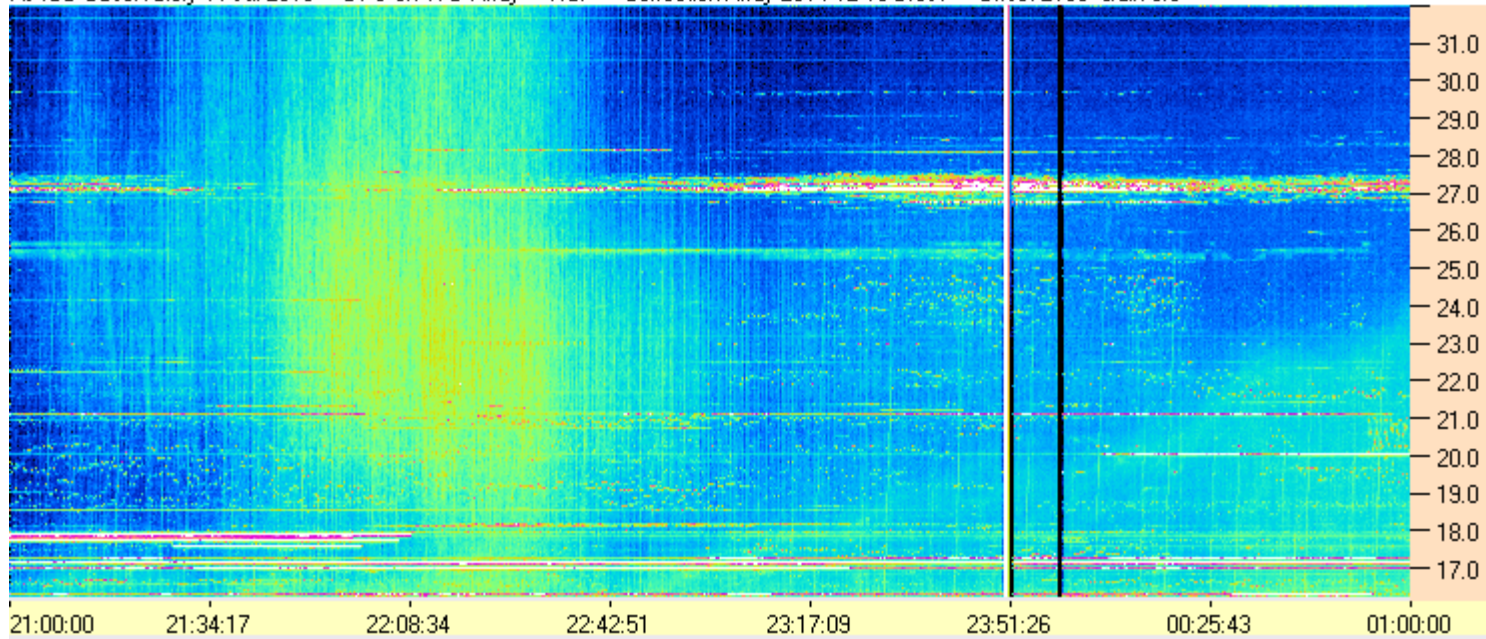
**AJ4CO Observatory 11 Jul 2016, log entry 736-738**

---

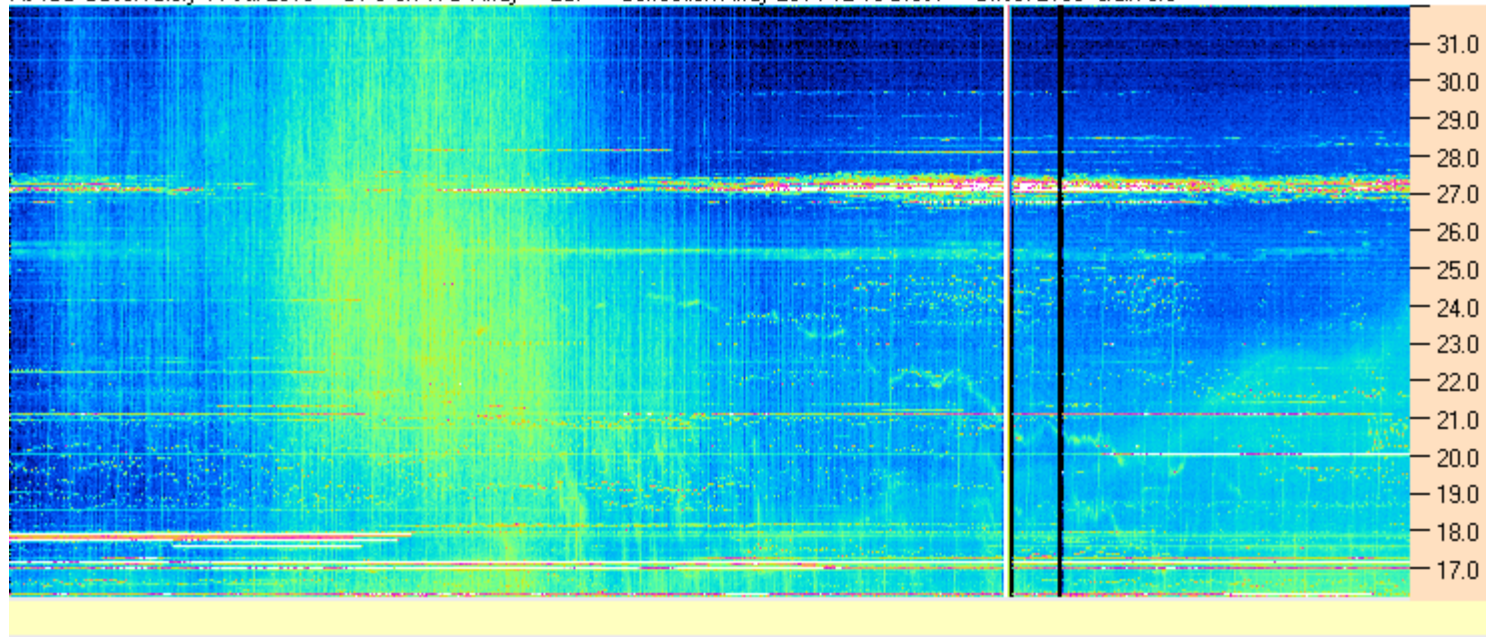




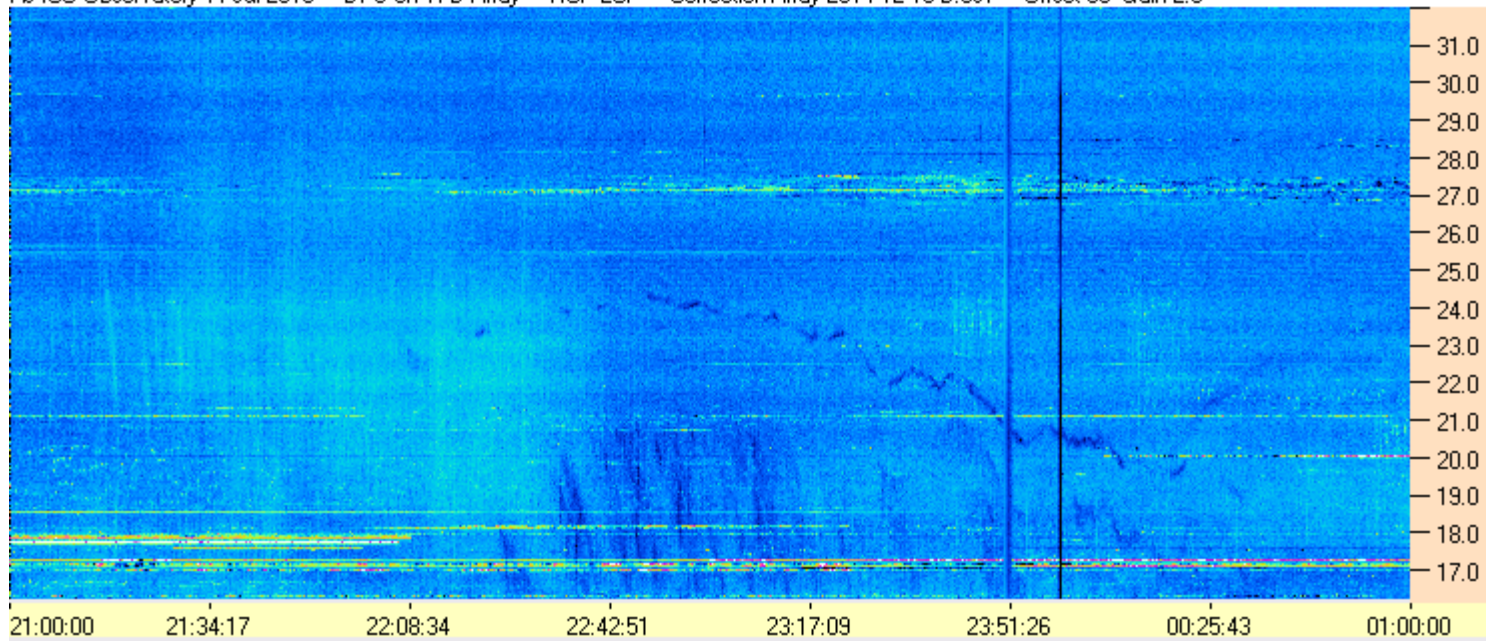
AJ4CO Observatory 11 Jul 2016 - DPS on TFD Array - RCP - Correction Array 2014 12 18 B.csv - Offset 2100 Gain 5.0



AJ4CO Observatory 11 Jul 2016 - DPS on TFD Array - LCP - Correction Array 2014 12 18 B.csv - Offset 2100 Gain 5.0



AJ4CO Observatory 11 Jul 2016 - DPS on TFD Array - RCP-LCP - Correction Array 2014 12 18 B.csv - Offset 50 Gain 2.0



AJ4CO Observatory 11 Jul 2016 - DPS on TFD Array - LCP-RCP - Correction Array 2014 12 18 B.csv - Offset 50 Gain 2.0

