

**Subject:** [radiojove-data] 28 Jun 2016 Io-B/D

**From:** Dave Typinski <davetyp@typnet.net>

**Date:** 07/09/2016 15:29

**To:** RadioJove-Data <radiojove-data@lists.nasa.gov>

Adding to Nathan's nice report, here's some Io-B and Io-D from 6/28.

RCP dominant L bursting 2131-2209 UTC from 16 to 32 MHz, positive emission envelope drift. (Io-B)

LCP dominant L bursting 2154-2332 UTC from 16 to 25 MHz, positive emission envelope drift. (Io-D)

Jupiter was  $-11^\circ$  to  $+19^\circ$  off axis.

Jupiter was trailing the Sun by  $69^\circ$ .

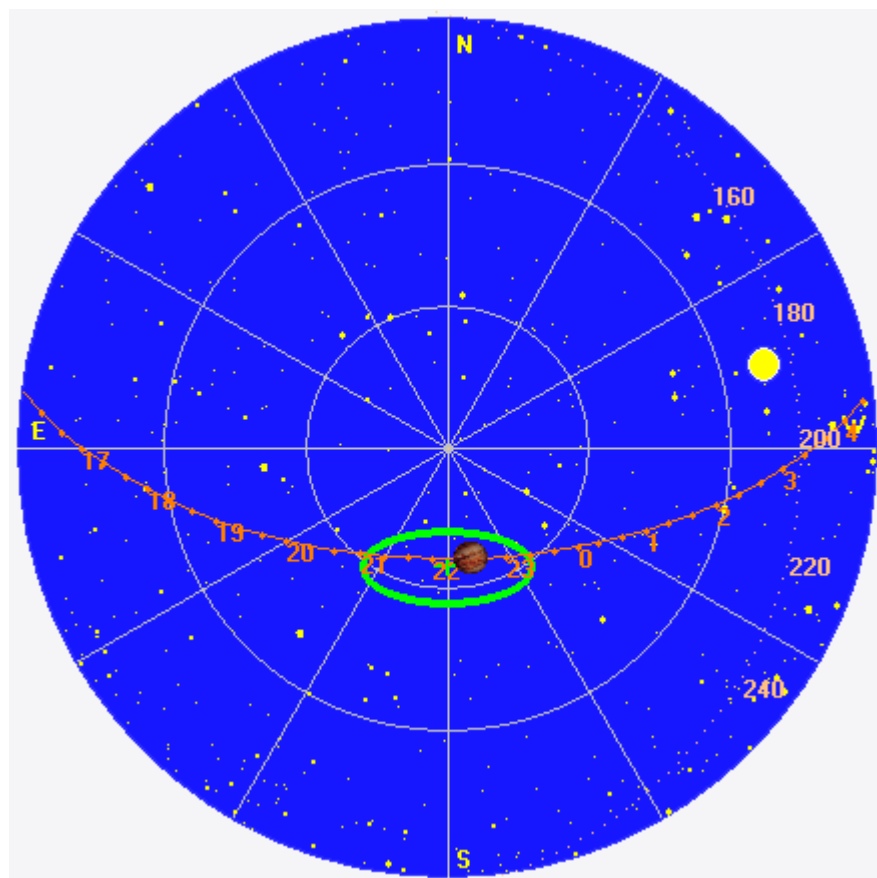
--

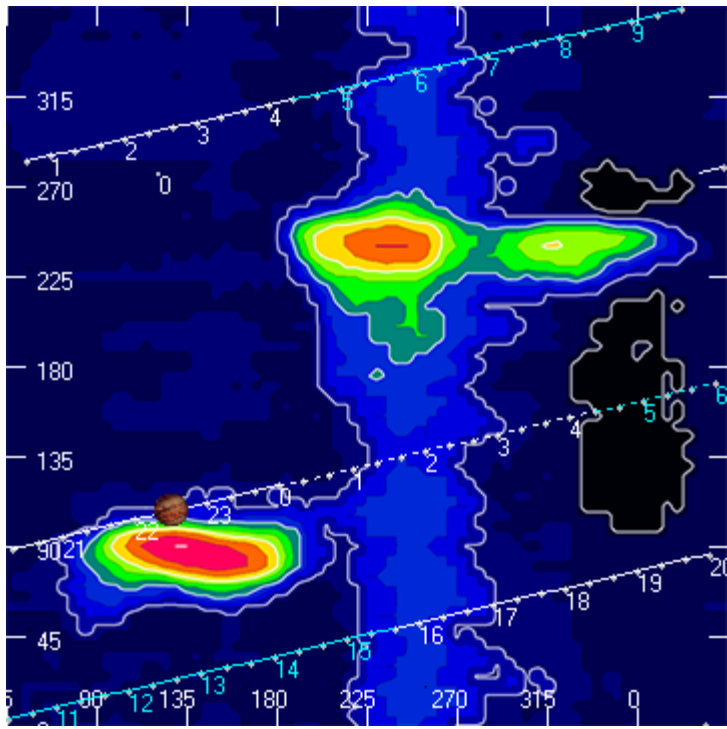
Dave

---

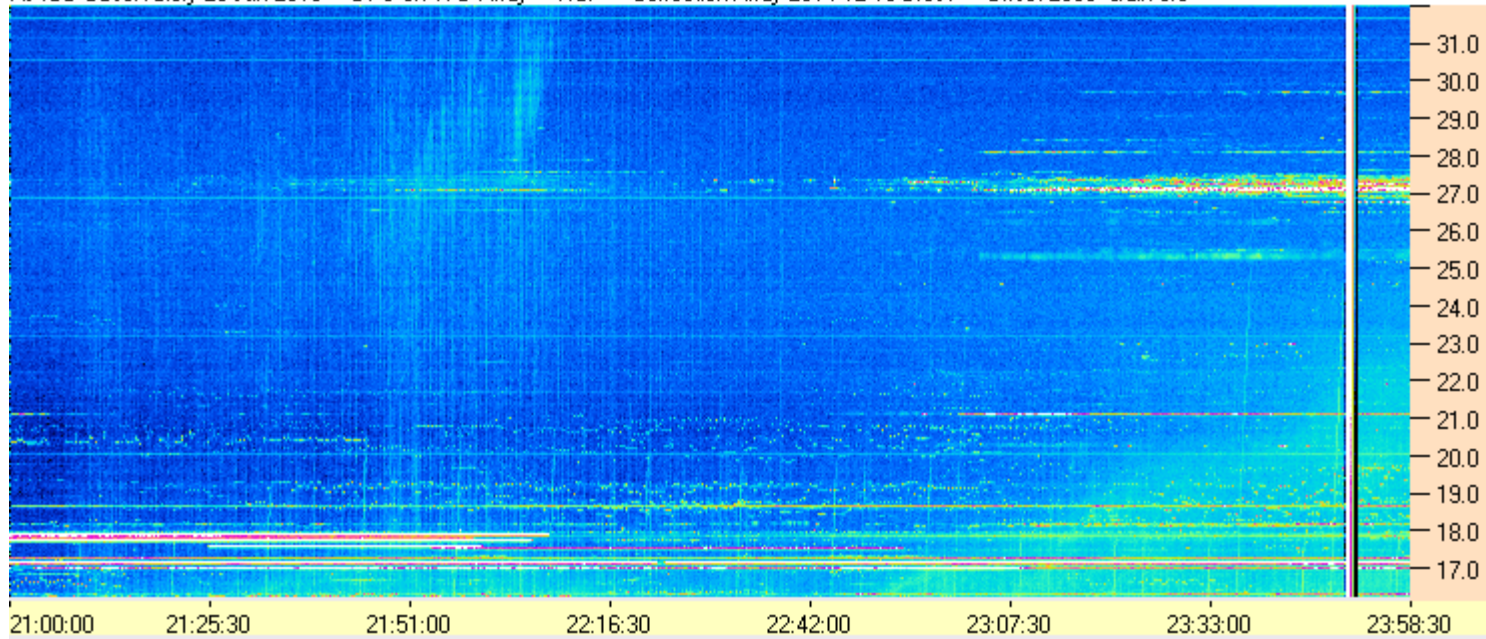
**AJ4CO Observatory 28 Jun 2016, log entry 727-728**

---

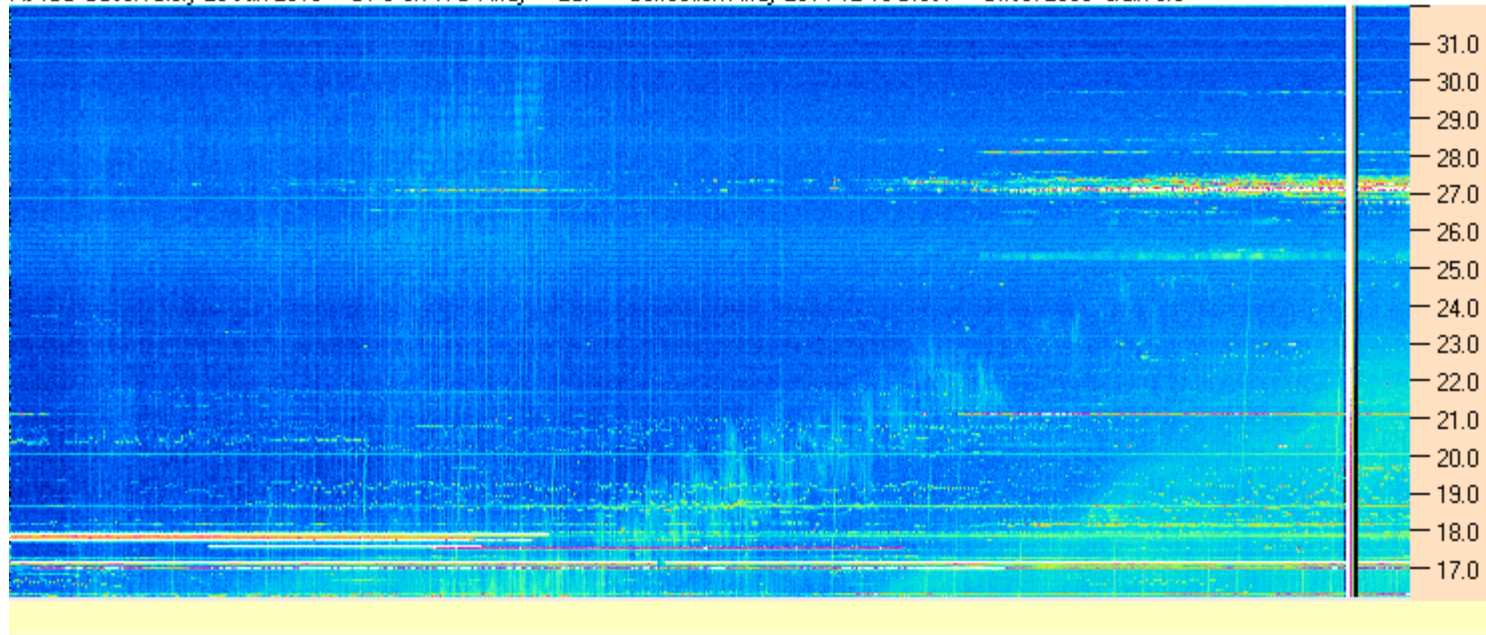




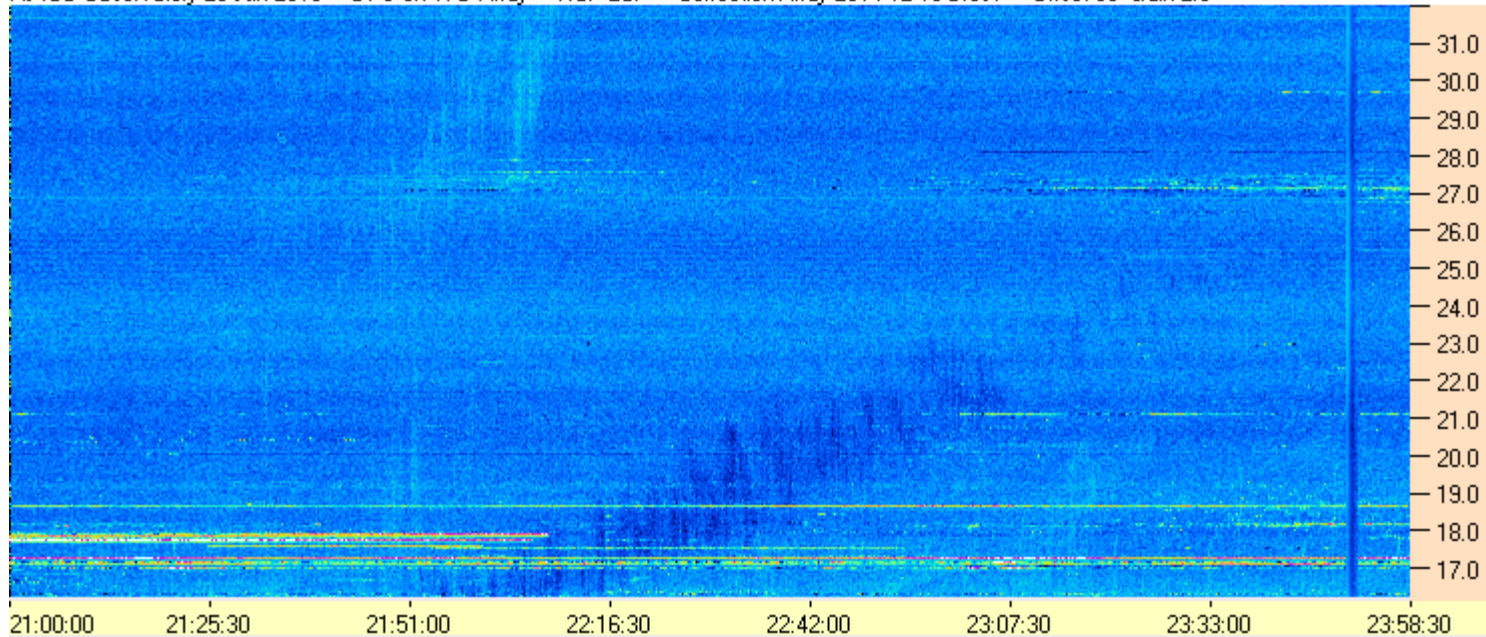
AJ4CO Observatory 28 Jun 2016 - DPS on TFD Array - RCP - Correction Array 2014 12 18 B.csv - Offset 2050 Gain 5.0



AJ4CO Observatory 28 Jun 2016 - DPS on TFD Array - LCP - Correction Array 2014 12 18 B.csv - Offset 2050 Gain 5.0



AJ4CO Observatory 28 Jun 2016 - DPS on TFD Array - RCP-LCP - Correction Array 2014 12 18 B.csv - Offset 50 Gain 2.0



AJ4CO Observatory 28 Jun 2016 - DPS on TFD Array - LCP-RCP - Correction Array 2014 12 18 B.csv - Offset 50 Gain 2.0

