

Subject: [radiojove-data] 17 Jun 2016 Io-A

From: Dave Typinski <davetyp@typnet.net>

Date: 06/19/2016 23:24

To: RadioJove-Data <radiojove-data@lists.nasa.gov>

Adding to Nathan's nice report, here's some Io-A from 6/17.

RCP dominant L bursting 0052-0110 UTC from 21 to 25 MHz, indeterminate emission envelope drift.

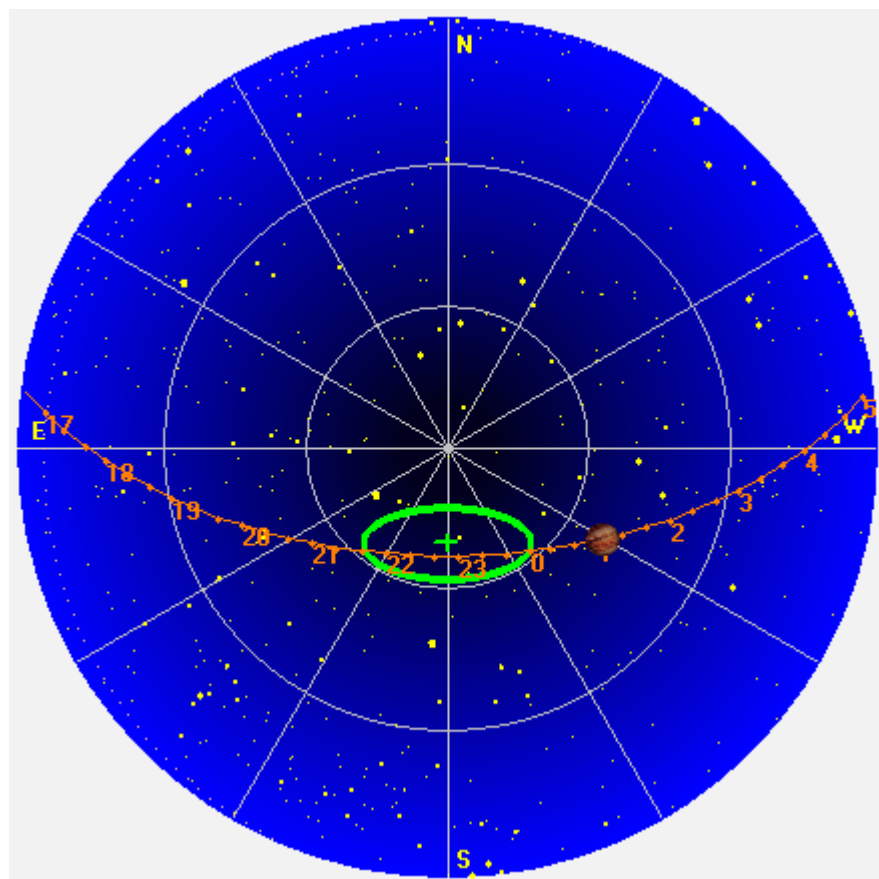
Jupiter was +29° to +33° off axis.

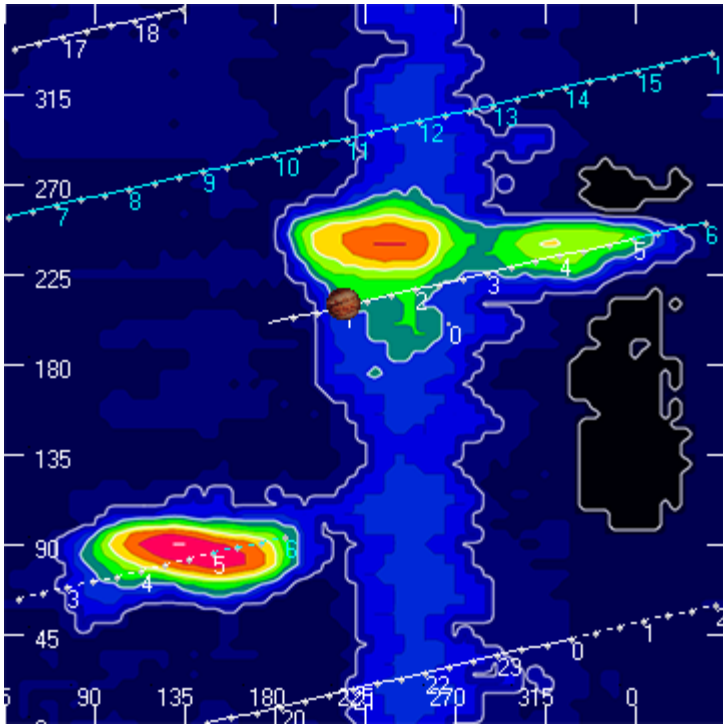
Jupiter was trailing the Sun by 79°.

--

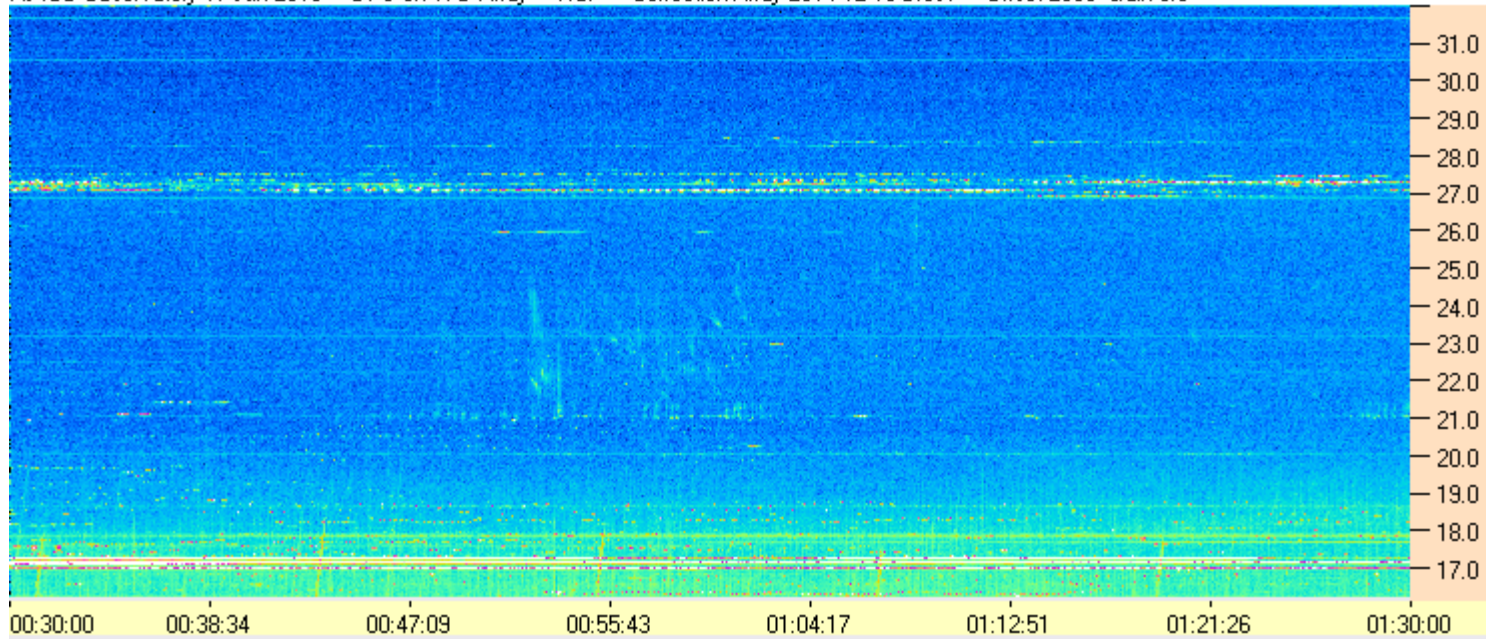
Dave

AJ4CO Observatory 17 Jun 2016, log entry 725

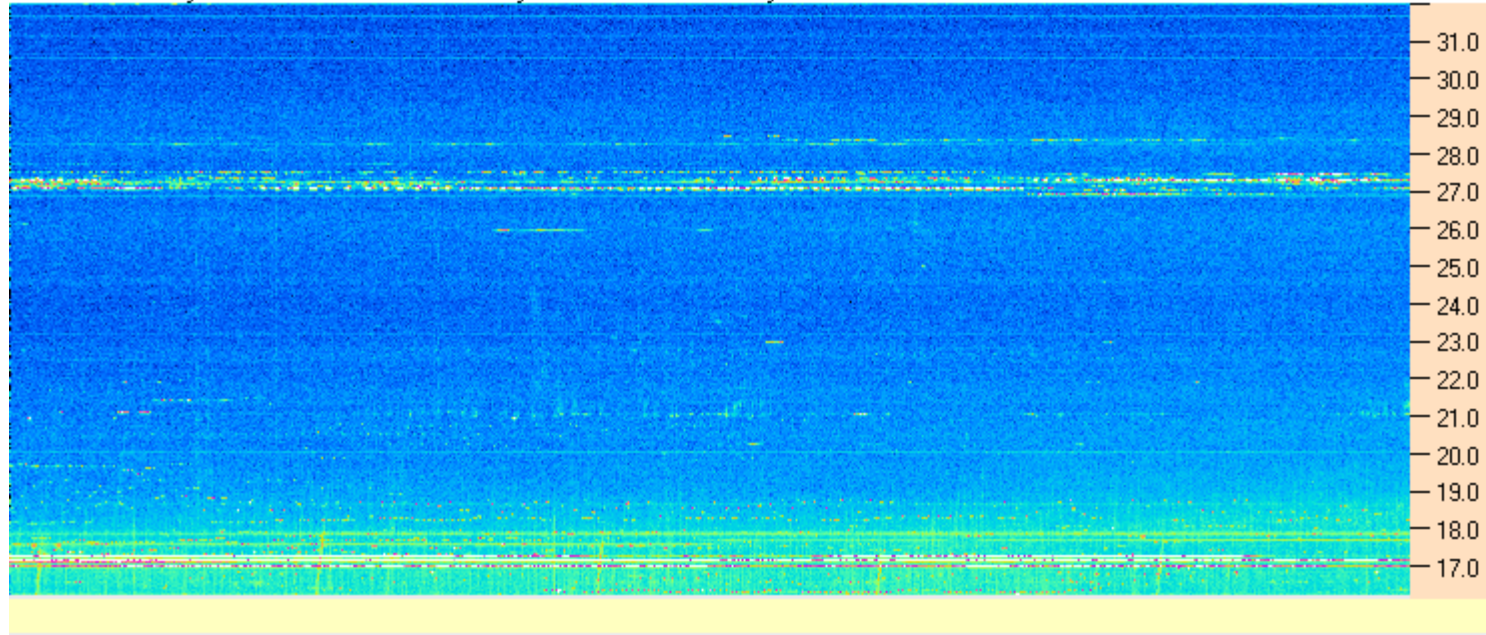




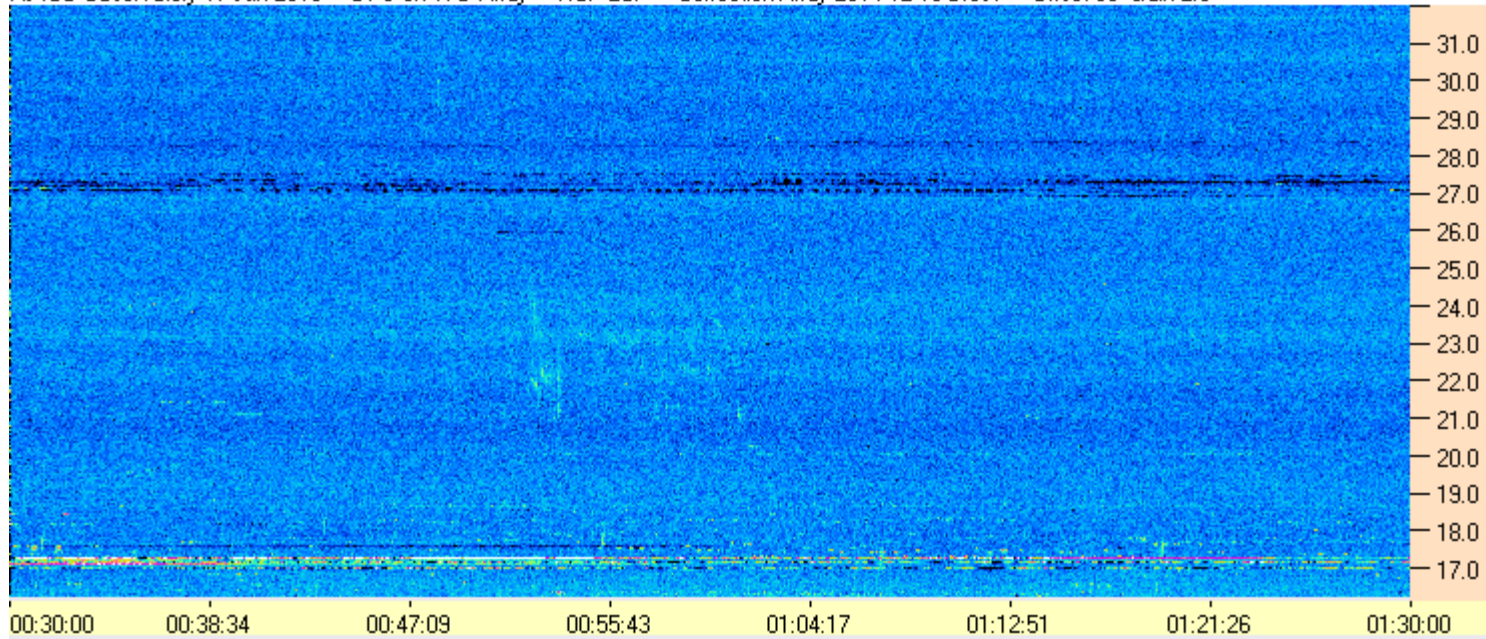
AJ4CO Observatory 17 Jun 2016 - DPS on TFD Array - RCP - Correction Array 2014 12 18 B.csv - Offset 2050 Gain 5.0



AJ4CO Observatory 17 Jun 2016 - DPS on TFD Array - LCP - Correction Array 2014 12 18 B.csv - Offset 2050 Gain 5.0



AJ4CO Observatory 17 Jun 2016 - DPS on TFD Array - RCP-LCP - Correction Array 2014 12 18 B.csv - Offset 50 Gain 2.0



AJ4CO Observatory 17 Jun 2016 - DPS on TFD Array - LCP-RCP - Correction Array 2014 12 18 B.csv - Offset 50 Gain 2.0

